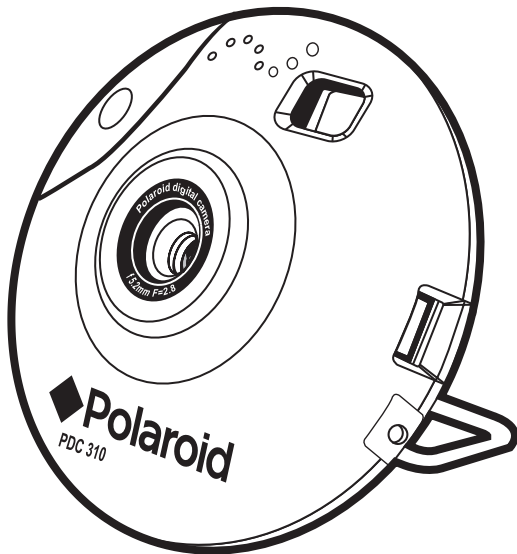




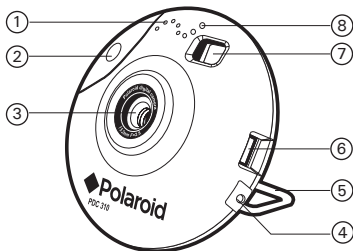
PDC 310

**Digital Camera
User Guide**



Product Overview

1. Speaker
2. Shutter button
3. Lens
4. MIC cable port
5. Camera stand
6. USB cable port
7. Viewfinder
8. Microphone



1. Viewfinder
2. Mode button
3. Shutter lock
4. Battery door
5. LCD screen

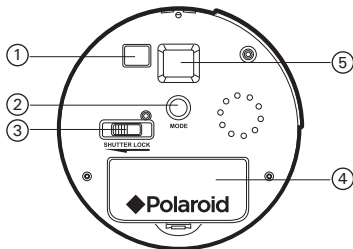


Table of Contents

1	Getting Started	6
	• What Can I do with My Camera?	6
	• What Can I do with My Digital Pictures?	6
	• What Can I do with My Audio Clips?	7
	• Camera Package Contents	7
	• Installing the Batteries	8
	• Turning the Camera On & Off	8
	• Low battery	9
	• Automatic Power Off Saves Battery	9
	• Assemble the Camera Holder	9
2	Camera Setting	10
	• Checking the Camera Status	10
3	Taking and Managing the Pictures	11
	• Taking a Picture	12
	• Taking Continuous Picture	13
	• Self-timer	13
	• Setting the Picture Quality	14
4	Recording Audio Clips	15
	• Recording Audio Clips	15
	• Audio Playback	15
	• Deleting the Last Picture/ Audio Clip/ Continuous pictures	15
	• Deleting All Pictures and Audio Clips from the Camera	16

5	Installing the Software onto a Computer	17
	• Install the software	17
	• Software included with your camera	18
	• Computer System Requirements.....	21
6	Transferring Pictures & Audio Clips to Your Computer	22
	• Before you Transfer Pictures	22
	• Connecting to your Computer	22
	• Transferring Pictures to PC	23
	• Transferring Audio and Continuous Pictures to PC	24
	• Transferring Pictures, Audio and Continuous Pictures to Mac	25
7	Using the Camera as a Web Cam.....	26
	• Setting up NetMeeting	26
	• Start NetMeeting	26
	• Setting up CU-SeeMe™	27
	• Making a call	27
8	Troubleshooting Problems.....	28
	• Troubleshooting	28
9	Getting Help.....	31
	• Polaroid Online Services	31
	• ArcSoft Software Help	31
10	Appendix	32
	• Technical Specifications	32
	• Using Your Batteries.....	33
	• Tips, Your Safety & Maintenance.....	34
	• Regulatory Information	34

1 Getting Started

• What Can I do with my Camera?

Capture



Enjoy point & shoot operation. Store pictures and audio clips on the internal memory.

Set Up



Select various camera settings.

Communicate



Use the camera as a web camera.

• What can I do with my Digital Pictures?

View



View pictures on a computer using the ArcSoft® Software supplied

Save






Save pictures to the computer memory

Communicate



Send the pictures over the Internet to family and friends.

• What can I do with my Audio Clips ?

- Playback**  Playback audio clips on a computer using the ArcSoft® Software supplied
- Save**  Save audio clips to the computer memory
- Communicate**  Send the audio clips over the Internet to family and friends.

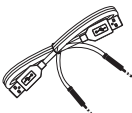
IMPORTANT!

Make sure you install all the software from the CD supplied before you connect your camera to a computer and transfer pictures from your camera to the computer. (See page 16)

• Camera Package Contents



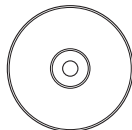
PDC 310



USB Cable with
microphone plug



Quick
Guide



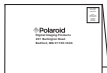
PDC 310 CD-ROM includes
Polaroid PDC 310 Driver,
Arcsoft® Software® Suite(PC & Mac)
Microsoft® NetMeeting™ (PC),
Adobe® Acrobat® Reader (PC & Mac),
Cu-SeeMe™ (Mac)
User Guide in PDF format.



Camera Holder



Neck Strap
with Clip



Registration Card

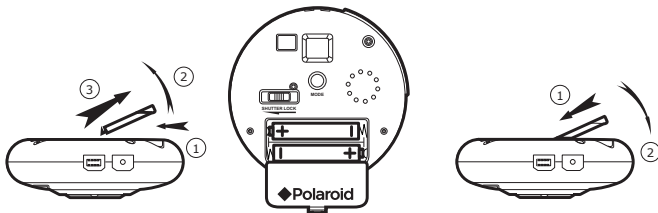


2 x AAA Alkaline
Batteries

• Installing the batteries

2 x AAA Alkaline batteries are supplied with the product.

1. Press in and lift the battery door inwards and upwards to open it.
2. Insert the batteries as shown, ensuring you follow the +/- signs correctly.
3. Push downwards to close the battery door.



IMPORTANT NOTE:

To avoid lost images when replacing batteries, please make sure your images are uploaded to your computer before replacing batteries or make sure the PDC 310 is connected to your computer via the USB cable.

• Turning the Camera On and Off

The camera will turn on automatically when new batteries are inserted or when it is connected to a computer via USB cable. To turn off the camera, hold the Mode button for 3 seconds, one beep will be heard and the camera is off, or disconnect the USB cable.

• Low battery

If the LCD display begins to blink, these are warnings that there is not enough power left in your batteries to fully operate your **PDC 310**.



IMPORTANT!

Any pictures stored in the camera's memory will be lost if the battery is totally drained. You must upload any stored images within 6 hours. **Do not replace your battery before you have downloaded or saved your images to your Computer.**

• Automatic Power Off Saves Battery

Your camera is designed to switch off automatically and save battery life after 30 seconds of inactivity. Press Mode button to reactivate the camera.

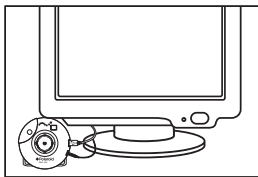
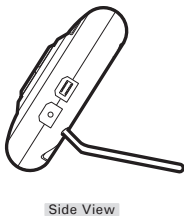
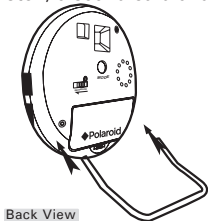
• Assemble the Camera Holder

When using **PDC 310** as a web-cam, you can use the camera holder enclosed to position the camera. Alternatively, the camera holder can be used for taking images in Self-timer mode. Assemble the camera with the holder as shown below.



IMPORTANT NOTE:

To use the camera as a web-cam, Internet access is required. To talk and listen, a sound card and speakers are required.



Place the PDC 310 beside your monitor

2 Camera Setting

• Checking the Camera Status

When the camera is on, you can press the Mode button to cycle through all camera settings. When a camera setting icon is shown on the LCD screen, it can be accessed by pressing the Shutter Button. If the Shutter Button is not pressed within 5 seconds the camera will revert to the normal picture taking mode.

Images
Remaining

High Resolution
(Hi-Res) Mode

Delete Last Audio

Clear Memory
Mode

Low Resolution
(Low-Res) Mode

Delete Last
Image Taken

Continuous
Mode

Audio Recording
Mode

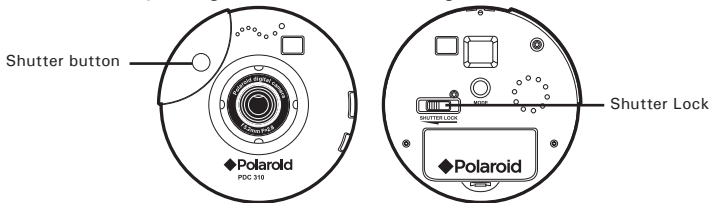
Delete Last continuous
image recorded

Self-Timer
Mode

Audio Playback
Mode

3 Taking and Managing the Pictures

There is a Shutter Lock located at the back of the camera. To avoid taking pictures accidentally, it's best to keep the shutter lock switch in the locked position when you are not taking pictures. **Before taking pictures , make sure to unlock the shutter button by sliding the shutter lock to the right.**



• Taking a Picture


1. Turn on the camera.
2. Frame your subject using the camera viewfinder.
3. Press the shutter button to take a picture. Hold the camera steady. A “beep” sound is made when the picture has been taken. The counter will count down. The LCD screen displays the remaining number of pictures that can be taken.




NOTE:

- Indoor pictures : Take pictures in a brightly lit room that has a mixture of both sunlight and lamp light. For best results, take a picture near a large window.
- Outdoor pictures : Take pictures in sunlight or in bright shade. Avoid intense sunlight that may cause sun spots in pictures. Always make sure that the sun or other light source is behind the person taking the picture.
- When the shutter button is pressed, a low beep indicates insufficient light to take an image , a series of beeps indicates that the camera’s memory is full.
- Due to the small size of the viewfinder, please ensure the camera is perfectly parallel to the subject before you press the shutter button. We recommended pictures are taken at a distance of 6 feet or further than 6 feet from the subject to the camera. If closer than 6 feet, the picture taken will be different from what you see inside the viewfinder frame.
- **Do not replace your battery before you have downloaded or saved your images to your computer.**

• Taking Continuous Pictures

Under the continuous mode , you can record continuous motions such as cycling, diving in a series of pictures.

1. Press the Mode Button until the  is shown on the LCD screen.
2. Press and hold the Shutter Button to start taking continuous pictures. The camera will allow you to take 99 pictures in Low-res mode or 24 pictures in Hi-res mode. In this mode, the counter will rapidly decrease accompanied by a series of rapid beeps as each picture is taken until the memory is full or the shutter button is released.




NOTE:

Under the Continuous Mode the camera will allow pictures to be taken with insufficient light.

• Self-timer

Your Camera is designed with a Self-timer function which will allow you to take pictures with a 9 seconds timer built in.

1. Turn on the camera.
2. Press the Mode Button until  is shown on the LCD screen.
3. Press the Shutter Button to start a 9 seconds Self-timer. A short beep will sound every second and then a long beep will sound just prior to a further short beep which indicates that the image has been successfully taken.



NOTE:

The Self-timer Mode cannot be selected when the camera's memory is full.

• Setting the Picture Quality

For best image quality use the high resolution setting.

1. Turn on the camera.
2. Press the Mode Button to Cycle through the Mode options until the resolution icon is displayed on the LCD screen.
3. Press the Shutter Button once to change to the alternative resolution.

For Example:

Changing from Hi-Res

Mode to Low-Res Mode:



Changing from Low-Res

Mode to Hi-Res Mode:



NOTE:

The Shutter Button can be used to switch between Hi-Res and Low-Res settings.

4 Recording Audio Clips

• Recording Audio Clip

1. Press the Mode Button until the **AP** is shown on the LCD screen.
2. Press and hold the Shutter Button to start recording. A beep will sound which indicates recording has begun. Release the Shutter Button to stop recording. You can record approximately 12 minutes of Audio Clips.



NOTE:

AP only displayed on the LCD when the camera contains audio clips. **dA** will display on LCD only when audio clip is the last one stored in memory.

• Audio Playback

1. Press the Mode Button until the **AP** is shown on the LCD screen.
2. Press the Shutter Button once, the last audio clip will begin to playback.
3. Press the Shutter Button again, it will allow you to playback the previous audio clip.

• Deleting the Last Picture/ Audio Clip/ Continuous pictures

1. Turn on the camera.
2. Press the Mode Button until **dP/dC/dA** is shown on the LCD screen.
3. Press the Shutter Button once, the camera will beep and the **dP/dC/dA** icon start flashing.
4. Press the Shutter Button again within 5 seconds will delete the last pictures / audio clip / continuous pictures stored in the camera.



NOTE:

- If only the last picture is deleted, the image counter will increase by one
- If the last continuous pictures are deleted, the image counter will increase by the same number as the continuous pictures.
- If the last audio clip is deleted, the image counter will increase according to the audio clip size.

• Deleting All Pictures and Audio Clips from the Camera

1. Turn on the camera.
2. Press the Mode Button until **CL** is shown on the LCD screen.
3. Press the Shutter Button once , the camera will beep and the **CL** icon start flashing.
4. Press the Shutter Button again within 5 seconds will delete all the pictures and audio clips stored in the camera and reset the image counter.



NOTE:

The deleted picture(s) and audio clip(s) cannot be recovered, please make sure you upload the picture(s) and audio clip(s) you want to a computer before deletion.

5 Installing the Software onto a Computer

• Install the software

For Windows® Users:

PC



IMPORTANT!

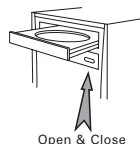
MAKE SURE YOU INSTALL ALL THE SOFTWARE FROM THE CD SUPPLIED BEFORE YOU CONNECT YOUR CAMERA TO A COMPUTER AND TRANSFER PICTURES FROM YOUR CAMERA TO THE COMPUTER.



NOTE:

Microsoft® NetMeeting™ already bundle with Windows® 2000 and XP OS. Users using Windows® 2000 or XP do not need to install this software from the CD-Rom.

1. Before you begin, close all other software applications open on your computer.
2. Insert the CD supplied into the computer CD-ROM Drive.
3. The CD User Interface Screen will automatically launch.
4. With the mouse, click on each software interface button in turn and follow the on screen instructions.



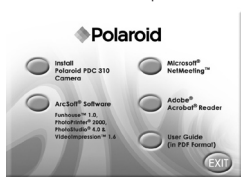
NOTE:

When prompted to do so, register your name and the other details requested for further on line support. You must be connected to your internet service provider to register on line electronically.



NOTE:

If the setup screen doesn't appear after loading the CD, then you can manually start it by double-clicking the "My Computer" icon on your desktop, then double-clicking the icon for the CD-ROM drive. When the CD-ROM window opens, double-click the "INSTALL-E.EXE" icon.



1. Before you begin, close all other software applications open on your computer.
2. Insert the CD supplied into the computer CD-ROM Drive.
3. Double click the CD-ROM icon "Polaroid".
4. Install the software included.

• **Software included with your camera**

The **PDC 310** software CD contains the following software;

PDC 310 Driver and Polaroid Digital Camera Manager

Connect the camera to a computer and use Polaroid Digital Camera Manager to upload the pictures or continuous pictures to the computer.

PhotoStudio® 4.0 Picture Editing Software

PhotoStudio® 4.0 is a full-featured, easy-to-use digital image-editing program that provides a complete set of photo editing and retouching tools, plus a wide selection of special effects and enhancements. Its powerful features include a wide variety of input and output options, layers, multiple undo and redo functions, image management tools, editable text, multiple file format support and a lot more.

For further help on how to use PhotoStudio® 4.0, go to "Help" to access the Help Topics.

Visit <http://www.arcsoft.com> for all your FAQ's, tips and technical support.

ArcSoft Funhouse™ 1.0 *Picture Editing Software*

ArcSoft Funhouse™ is an image entertainment application that enables users to create “photo fantasies” by combining their personal photos with a wide variety of fantasy backgrounds. Users can get their own images from digital cameras, scanners, disk drives and Photo CDs, and seamlessly combine them with just a few clicks of the mouse. The fantasy backgrounds include fictional characters, classic works of art, Olympic heroes, 50’s funnies, bathing beauties, muscle men and a lot more.

For further help on how to use ArcSoft Funhouse™ 1.0, go to “Help” to access the Help Topics.

Visit <http://www.arcsoft.com> for all your FAQ’s, tips and technical support.

ArcSoft PhotoPrinter® 2000 *Picture Printing Software*

ArcSoft PhotoPrinter® is an easy-to-use printing utility that enables the user to layout and print multiple images in different sizes quickly and easily on a single sheet of paper. The program offers a large selection of printing templates, including Kodak Digital Science Inkjet Photo Paper Templates and Avery-brand paper products. It also includes commonly used image-editing tools and a wide selection of templates for frames, edges and backgrounds for enhancing images.

For further help on how to use ArcSoft PhotoPrinter™ 2000, click the “?” on the top right hand corner to access the Help Topics.

Visit <http://www.arcsoft.com> for all your FAQ’s, tips and technical support.

ArcSoft VideImpression™ 1.6 *Movie Making Software*

ArcSoft VideImpression™ is an easy-to-use video and image editing software program. The program enables users to create and edit new videos using existing video and image files - making desktop video presentations for home, business, and the Web.

Microsoft® NetMeeting™ *Web Cam software*

NetMeeting™ provides the most complete conferencing solution for the Internet and corporate intranet. Powerful features let you communicate with both audio and video, collaborate on virtually any Windows-based application, exchange graphics on an electronic whiteboard, transfer files, use the text-based chat program, and much more. Using your PC and the Internet, you can now hold face-to-face conversations with friends and family around the world.

CU-SeeMe™ *Web Cam software*

Cu-SeeMe™ started the craze for videochat on the Internet and it's still the most popular, full-featured software for seeing, hearing and sharing. It can be used over the Internet or any TCP/IP network. With Cu-SeeMe™, you can make new friends, expand your professional and social networks, find people with similar interests, watch informative and entertaining cybercast events, and much more.

Adobe® Acrobat® Reader *.PDF File Reading Software*

Adobe® Acrobat® Reader lets you view and print Adobe Portable Document format (PDF) files on all major computer platforms, as well as fill in and submit Adobe PDF forms online.

• Computer system requirements

For acceptable picture transfer and editing, we recommend the following minimum requirements;

PC

For Windows® Users

- Compatible with Microsoft® Windows® 98SE, Me, 2000 or XP
- Pentium® II 333MHz or equivalent processor
- 64MB RAM (128MB recommended)
- USB Port
- 200MB free disk space
- Colour monitor with high colour (16-bit) graphic capability or higher
- CD-ROM drive
- Standard mouse and keyboard
- Stereo speakers

MAC

For Macintosh® Users

- PowerPC® Processor
- Mac™ OS Version 8.6 ~ 9.2
- USB Port
- 64MB RAM (128MB recommended)
- 150MB Free disk space
- Colour monitor with high colour (16-bit) graphic capability or higher
- CD-ROM drive
- Standard mouse and keyboard
- Stereo speakers

6 Transferring Pictures & Audio Clips to Your Computer

• Before you transfer pictures

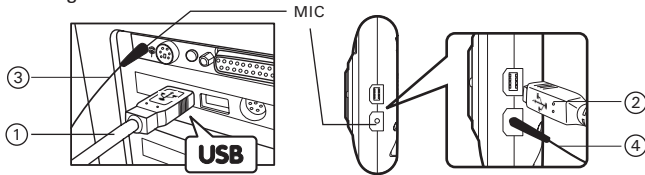


IMPORTANT!

Before you transfer your pictures make sure you have installed the software from the CD.



• Connecting to your computer

Connecting with the USB / MIC Cable.



USB Series "A" Plug
connects to your Computer

USB Series "B" Plug
connects to your PDC 310

1. Plug the labelled end  of the USB cable into the socket marked  on your computer.
2. Plug the other end of the USB cable into the port on your camera. The camera will be powered on automatically.
3. Plug one end of the MIC cable into the MIC Jack on your computer. This is normally located on your computer sound card. If the port is not labelled, see your computer user's guide.
4. Plug the other end of the MIC cable into the port on your camera.



IMPORTANT!

The first time the camera is connected to a computer via the USB cable, the computer will detect the new hardware automatically.

• Transferring Pictures to PC

For XP users only:

when the camera is connected to a computer via the USB Cable, the computer will scan the camera automatically, you can transfer the pictures following the on-screen prompts.

NOTE:

Windows® 98, 2000 will not scan the camera automatically.

Also you can transfer the pictures in PhotoStudio 4.0 software.

1. Start PhotoStudio® 4.0.

Go to start->Programs->ArcSoft Software Suite->PhotoStudio® 4.0

2. Go to "File" -> "Select Source" -> select "Polaroid PDC 310" as source.

3. Click the button on the right upper corner of the Album. The Album Palette will pop out. (As shown on the right hand side picture)

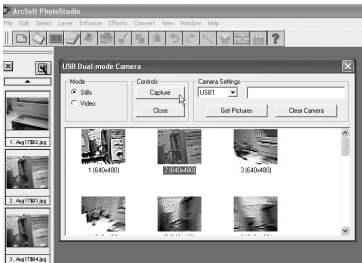
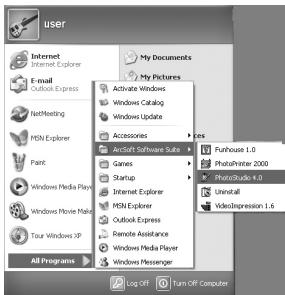
4. Click on the small downward triangle to select / create an album to hold your pictures.

5. Click the camera icon and then the capture interface will show up.

6. Highlight the wanted image(s) and click "Capture". The image(s) will be saved to C:\program files\Arcsoft Software Suite\PhotoStudio\Photos.

NOTE:

When you exit PhotoStudio® 4.0, it may ask if you want to save the modified album, click yes to save.







• Transferring Audio and Continuous Pictures to PC



NOTE:

This application should be used with the resolution 800 X 600 or above.

1. Connect the camera to the computer.
2. Double click the “Polaroid PDC 310 Camera” icon on the desktop .
3. Click Download button  to capture all audio and continuous pictures stored in your **PDC 310**.
4. All uploaded audio and continuous pictures will be shown on the left panel.
5. To transfer continuous pictures:
Hold down the CTRL key and with the mouse click to select all the continuous pictures and click the Create AVI button .
6. To transfer audio:
You can select the audio(s) and click the Transfer File(s) button .
7. The audio or continuous pictures will appear on the right panel and it will be saved to the album.



NOTE:

The “Album” automatically created on your desktop.

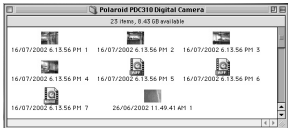
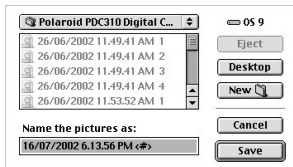
- **Transferring Pictures, Audio and Continuous Pictures to Mac**

1. Connect the USB cable from the camera to the computer.
2. A window will pop up and ask you to name the pictures (images). File name format is default as <Date> <Time> <No. of image>.
3. Click “Save”
4. Your Mac will ask you if you want to empty your **PDC 310**.
 - If you click “Yes”, images stored in your **PDC 310** will be deleted.
 - If you click “No”, images stored in your **PDC 310** will be retained.
5. Individual pictures and Audio clips will be uploaded to your “Polaroid PDC 310 Digital Camera” folder.



NOTE:

The default name format is <Date> <Time> <No. of image>. You can change the name by going to “Control Panel” and double click “Polaroid PDC 310 Digital Camera” icon.



7 Using the Camera as a Web Cam

For Windows® Users:

PC

• Setting up NetMeeting

1. Connect your **PDC 310** to the USB cable and MIC cable on one end.
2. Connect the USB cable to a USB port and connect the MIC cable to a MIC Jack on your PC on the other end.
3. Put your **PDC 310** on top of a flat surface.

NOTE:

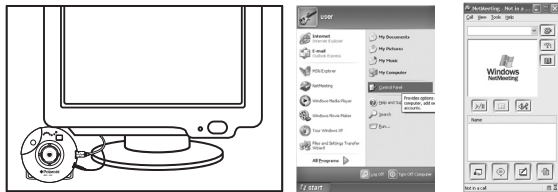
The microphone is integrated inside the camera.

• Start NetMeeting


NOTE:

For Windows® XP/2000 users who use NetMeeting for the first time, Go to Start -> Run -> type in "conf" -> click "OK" and then follow the on-screen set up instruction to set up NetMeeting.

1. Double click the "NetMeeting" icon on the desktop or select the "NetMeeting" icon from the Windows Start Menu.
2. If you need further help on how to use Microsoft® NetMeeting™, select the "Help" under the manual bar and choose the topic you need. Or you can visit the following website: <http://www.microsoft.com/windows/netmeeting>.



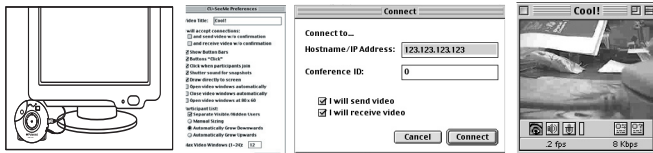
Setting up CU-SeeMe™

 **Warning!** Using CU-SeeMe™ will erase all images stored in your PDC 310. Make sure you upload all wanted images before using CU-SeeMe™.

1. Connect your **PDC 310** to the USB cable on the stand.
2. Connect your USB cable to an available USB port on your Mac on the other end.
3. Put your **PDC 310** on top of your Mac monitor or another flat surface.
4. Connect your microphone (not included) to your audio card's external microphone connector.

Making a call

5. Double click the “CU-SeeMe™” icon from the Cu-SeeMe™ folder.
6. Go to “Edit” and then “Preference”. Edit your settings, e.g. video title, connection settings, etc.
7. Go to “Conference” and click “Connect”. Type in the Hostname and IP address for the person you want to call and press “Connect”.
8. To find your own IP address, go to “Control Panel” and then “File Sharing”. You will be able to see your IP address under the “Start/Stop” partition.
9. For further info on how to use CU-SeeMe™, you can visit the following website: <http://www.cuseeme.com>



8 Troubleshooting Problems

The troubleshooting guide is designed to help you. If problems continue, please contact your local customer support hot-line. See your registration card for help line contact details.

For Windows® Users

PC

Symptom	Problem	Solution
I receive an error message when I am installing the Polaroid PDC 310 Camera.	Polaroid PDC 310 Camera does not load.	Shut down all other applications and attempt to re-install the driver, or download the updated driver from www.polaroid-digital.com and install the updated driver.
		Check the USB controller in your BIOS if they are activated. If these does not work contact your national Customer Support representative.
Polaroid PDC 310 Camera folder is not found in the Programs menu after I have installed the driver.	The installer for the Polaroid PDC 310 Camera requires the PDC 310 be connected to the PC (via the USB) after the software has been installed & the PC restarted.	Install the software, restart your PC, and finally, connect the PDC 310 to the PC via the USB port, then the software folder will appear in the Program menu.
All the images I have taken do not appear on the PDC 310 .	You have lost power to your PDC 310 by either:	
	Insufficient battery power	Upload all images to your PC as soon as possible. (please refer to Battery Guidance section in User's Manual.)
	Removing the battery without being connected to your PC (turned on) via the USB cable.	If you need to change batteries, and retain the images in your PDC 310 's memory, ensure you are connected to a PC which is turned on via the USB cable, which will then draw power from the PC whilst you insert new batteries.
I cannot upload images to the PC	Connection failure	Check all cables connections are secured.
LCD display is flashing.	Battery power is too low to continue taking images.	Upload saved images immediately, then replace battery.

Symptom	Problem	Solution
I cannot run the Polaroid PDC 310 Camera.	Conflict with another camera driver capture device.	If you have any other camera installed on your computer, remove the camera and it's driver completely from your system to avoid conflict with another camera or capture device.
Black corner appears on the images taken.	Lost corner of images.	Make sure no object cover the lens.
I hear a low "beep" when trying to take an image.	Insufficient light.	Take your images in sufficient light condition.
I cannot access any Funhouse's templates.	No CD in CD-ROM drive.	Put Polaroid CD into CD ROM drive.
My CD Installation wizard does not work.	The auto installation file is switched to off. or The CD ROM is disconnected.	Go to the computer desktop. Right click on "My Computer". Click "Properties". Select "Device Manager". Double click on "CD-ROM", double click on "CD-R" (normally the manufacturer's name). Click on "Settings". Ensure "Auto insert notification" is ticked and the "disconnect" is ticked. If you change the settings the computer will ask you to restart your PC. Click "Yes".

Symptom	Problem	Solution
I receive an error message when I am installing the Polaroid PDC 310 Digital Camera.	Polaroid PDC 310 Digital Camera does not load.	Shut down all other applications and attempt to re-install the driver, or download the updated driver from www.polaroid-digital.com and install the updated driver.
"Polaroid PDC 310 Digital Camera" plug-in file and Polaroid PDC 310 Digital Camera" folder is not found in the Programs menu after I have installed the driver.	The installer for the Polaroid PDC 310 Digital Camera requires the PDC 310 be connected to the Mac (via the USB) after the software has been installed & the Mac restarted.	Install the software, restart your Mac, and finally, connect the PDC 310 to the Mac via the USB port, then the plug-in file and folder will appear in the Hard disk.
All the images I have taken do not appear on the PDC 310.	You have lost power to your PDC 310 by either:	Upload all images to your Mac as soon as possible. (please refer to Battery Guidance section in User's Manual.)
	Insufficient battery power	
	Removing the battery without being connected to your Mac (turned on) via the USB cable.	If you need to change batteries, and retain the images in your PDC 310's memory, ensure you are connected to a Mac which is turned on via the USB cable, which will then draw power from the Mac whilst you insert new batteries.
I cannot upload images to the Mac	Connection failure	Check all cables connections are secured.
LCD display is flashing.	Battery power is too low to continue taking images.	Upload saved images immediately, then replace battery.
I cannot run the Polaroid PDC 310 Digital Camera.	Conflict with another camera driver capture device.	If you have any other camera installed on your computer, remove the camera and it's driver completely from your system to avoid conflict with another camera or capture device.
I hear a low "beep" when trying to take an image.	Insufficient light.	Take your images in sufficient light condition.
		Check your lens cover is open.
I cannot access any Arcsoft Funhouse's templates.	No CD in CD-ROM drive.	Put Polaroid CD into the CD-ROM drive.

9 Getting Help

• Polaroid Online Services

Website: <http://www.polaroid-digital.com>

• ArcSoft Software Help For North America

ArcSoft HQ Support Centre
(Fremont California, CA)
Tel: 1-800-762-8657
(toll free number)
Fax: 1-510-440-1270
E-mail: support@arcsoft.com

For China

ArcSoft China Support Centre (Beijing)
Tel: 8610-6849-1368
Fax: 8610-6849-1367
E-mail: china@arcsoft.com

For Oceania

ArcSoft Australian Support Centre
(Baulkham Hills, New South Wales)
Tel: 61 (2) 9899-5888
Fax: 61 (2) 9899-5728
E-mail: support@supportgroup.com.au

For South & Central America

Tel: 1-510-979+5520
Fax: 1-510-440-1270
E-mail: latInsupport@arcsoft.com

For Japan

ArcSoft Japan Support Centre (Tokyo)
Tel: +81-03-3834-5256
Fax: +81-03-5816-4730
Web: <http://www.mds2000.co.jp/arcsoft>
E-mail: japan@arcsoft.com and
support@mds2000.com

For Europe/Middle East/ Africa & Rest of the World ArcSoft Europe Support Centre (Ireland)

Tel: +353-(0) 61-702087
Fax: +353-(0) 61-702001
E-mail: europe@arcsoft.com

10 Appendix

• **Technical Specifications**

- **Memory:** built-in SDRAM, 64 Mbit equivalent to 8MB
- **Image Performance for Video on Web-cam:** QCIF - 24 fps (approx.)
- **Still Image:**
 - High Resolution (VGA) - 640 x 480 pixel
 - Low Resolution (QVGA) - 320 x 240 pixel
- **Storable Images:** High Resolution - 24 images
Low Resolution - 99 images
- **Video Clip:** unlimited when connected to the computer via video capture software
- **Audio recording:** if no image captured, around 12 minutes of audio clip can be recorded.
- **File Format:**
 - For Windows® Users (Still Image - BMP format, Video Image - AVI format)
 - For Macintosh® Users (Still Image - PICT format, Video Image - QuickTime format)
- **Interface:** USB
- **External Connector:** USB
- **Auto Power Off:** after 30 seconds inactivity
- **Power Supply:** USB Port, 2 x AAA Batteries (included)
- **Operating System:**
 - For Windows® Users: Microsoft® Windows® 98SE, Me, 2000 or XP.
 - For Macintosh® Users: Mac® OS Version 8.6 ~ 9.2

• Using your batteries



IMPORTANT NOTE:

A fresh alkaline battery provides an output voltage of 1.5V whereas a rechargeable battery available in retail stores generally has a lower output 1.2V. In order to maximize the performance of your **PDC 310** camera, we recommend that you do not use rechargeable batteries.

WARNINGS!

- Batteries should be replaced by an adult.
 - Do not mix different types of batteries or new and used batteries.
 - Use recommended or equivalent type of batteries only.
 - Insert the batteries with the correct polarity.
 - Remove exhausted batteries from the camera immediately.
 - Do not short the supply terminals.
 - Do not mix alkaline, standard (carbon-zinc), or rechargeable (nickel-cadmium) batteries.
 - Do not dispose the batteries in fire.
 - Remove batteries from the camera when not in use.
 - Rechargeable batteries are not recommended.
- These instructions should be retained for future reference.

• **Tips, Your Safety & Maintenance**

Your Camera should only be operated within the following environmental conditions;

- 41 - 104° Fahrenheit; 5 - 40° Celsius
- 20% - 85% relative humidity, non condensing

Battery life or image quality may be affected outside these conditions



Camera Cautions

- NEVER immerse any part of the Camera or its accessories into any fluid or liquid.
- ALWAYS disconnect the Camera from your PC or TV before cleaning it.
- ALWAYS remove dust or stains with a soft cloth dampened with water or neutral detergent.
- NEVER place hot items on the surface of the Camera.
- NEVER attempt to open or disassemble Camera as this will affect any warranty claim.

• **Regulatory Information**

FCC Notice

This device complies with Part 15 of FCC Rules. Operation is subject to the following two conditions: (1) This device may not cause harmful interference, and (2) This device must accept any interference received, including interference that may cause undesired operation.

Warning: Changes or modifications to this unit not expressly approved by the party responsible for compliance could void the user's authority to operate the equipment.

NOTE: This equipment has been tested and found to comply with the limits for Class B digital device, pursuant to Part 15 of the FCC Rules. These limits are designed to provide reasonable protection against harmful interference in a residential installation. This equipment generates, uses and can radiate radio frequency energy and, if not installed and used in accordance with the instructions, may cause harmful interference to radio communications.

However, there is no guarantee that interference will not occur in a particular installation. If this equipment does cause harmful interference to radio or television reception, which can be determined by turning the equipment off and on, the user is encouraged to try to correct the interference by one or more of the following measures:

- Reorient or relocate the receiving antenna.
- Increase the separation between the equipment and receiver.
- Connect the equipment into an outlet on a circuit different from that to which the receiver is needed.
- Consult the dealer or an experienced radio / TV technician for help.

Shielded cable must be used with this unit to ensure compliance with the Class B FCC limits.

Under the environment with electrostatic discharge, the product may malfunction and require user to reset the product.

UK 1002

Part No.: OM837449 R1

Printed in China

Download from Www.Somanuals.com. All Manuals Search And Download.

Free Manuals Download Website

<http://myh66.com>

<http://usermanuals.us>

<http://www.somanuals.com>

<http://www.4manuals.cc>

<http://www.manual-lib.com>

<http://www.404manual.com>

<http://www.luxmanual.com>

<http://aubethermostatmanual.com>

Golf course search by state

<http://golfingnear.com>

Email search by domain

<http://emailbydomain.com>

Auto manuals search

<http://auto.somanuals.com>

TV manuals search

<http://tv.somanuals.com>