

# 7" Portable LCD TV with NTSC Tuner FLM-0711LA



20060525

## **Polaroid. Add a little color to your life.**

Since 1937, America has turned to Polaroid for their photography needs. Today, families look to Polaroid for consumer electronics that define the digital age: plasma and LCD TVs, portable and standard DVD players, digital cameras. And while our selection has changed, you'll still receive the same friendly, helpful service that made Polaroid an American icon. Congratulations on your new Polaroid LCD TV purchase. To ensure your new LCD TV provides you with years of enjoyment, please read this guide carefully.

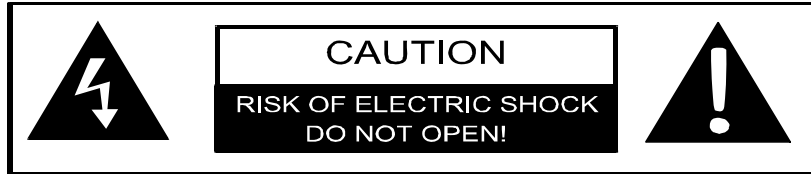
### **Important Notice**

It is unlawful in most jurisdictions for a person to drive a motor vehicle which is equipped with a television viewer or screen that is located in the motor vehicle at any point forward of the back of the driver's seat, or that is visible, directly or indirectly, to the driver while operating the vehicle. In the interest of safety, this system should never be installed where it will be visible, directly or indirectly, by the operator of the motor vehicle.

### **Safety Precaution**

For safety reasons, when changing video media, it is recommended that the vehicle is not in motion, and that you do not allow children to unfasten seat-belts to change video media or make any adjustments to the system. Enjoy your entertainment system but always remember-safety of all passengers remains the number one priority.

## Important Safety Instruction



The lightning flash with arrowhead symbol, within an equilateral triangle, is intended to alert the user to the presence of un-insulated "dangerous voltage" within the product's enclosure that may be of sufficient magnitude to constitute a risk of electric to persons.



The exclamation point within an equilateral triangle is intended to alert the user to the presence of important operating and maintenance (servicing) instructions in the literature accompanying the appliance.

### **CAUTION**

1. To reduce the risk of electric shock, do not remove the cover (or back). No user-serviceable parts inside. Refer servicing to qualified service personnel. Unplug the product from the wall outlet before servicing or when it is unused for a long period of time.
2. The manufacturer should not hold responsibility for the damage caused by any substitutions and modifications of the product without authorization from the manufacturer or authorized unit.
3. Danger of explosion if battery is incorrectly replaced. Replace only with the same or equivalent type.

### **WARNING**

The apparatus shall not be exposed to dripping or splashing and that no objects filled with liquids, such as vases, shall be placed on the apparatus.

# **Important Safety Instruction**

---

## **NOTES**

1. Read these instructions.
2. Keep these instructions.
3. Heed all warnings.
4. Follow all instructions.
5. Do not use this apparatus near water.
6. Clean only with dry cloth.
7. Do not block any ventilation openings. Maintain well ventilated conditions around the product. Do not put product on bed, sofa or anything that blocks ventilation. Install according to the manufacturer's instructions.
8. Do not install near any heat sources such as radiators, heat registers, stoves or other apparatus (including amplifiers) that produce heat.
9. Read, heed and follow all instructions to ensure correct and safe installation and interconnection of the apparatus;
10. The apparatus shall not be exposed to dripping or splashing and that no objects filled with liquids, such as vases, shall be placed on the apparatus;
11. The mains socket-outlet shall be installed near the apparatus and the mains plug shall remain readily operable;
12. Protect the power cord from being walked on or pinched particularly at plugs, convenience receptacles, and the point where they exit from the apparatus.
13. Only use attachments/accessories specified by the manufacturer.
14. Use only with the cart, stand, tripod, bracket, or table specified by the manufacturer, or sold with the apparatus. When a cart is used, use caution when moving the cart/apparatus combination to avoid injury from tip-over.
15. Unplug the apparatus during lightning storms or when unused for long periods of time.
16. Refer all servicing to qualified service personnel. Servicing is required when the apparatus has been damaged in any way, such as power-supply cord or plug is damaged, liquid has been spilled or objects have fallen into the apparatus, the apparatus has been exposed to rain or moisture, does not operate normally, or has been dropped.

**Note: Do not touch the color TFT LCD screen by hand directly.**

## **Product Features**

---

### **TV Signal**

Can be connected to the TV antenna for receiving TV signal.

### **Superior Sound**

Built-in 2x1.5w stereo amplifier realizes high quality sound effects.

### **LCD (Liquid Crystal Display)**

Designed with 7" color TFT liquid crystal display clearly shows the data.

### **Audio and Video Input and Output**

Audio and video output can be connected to external audio and video input device and external AV signal source.

### **Channel Search Function**

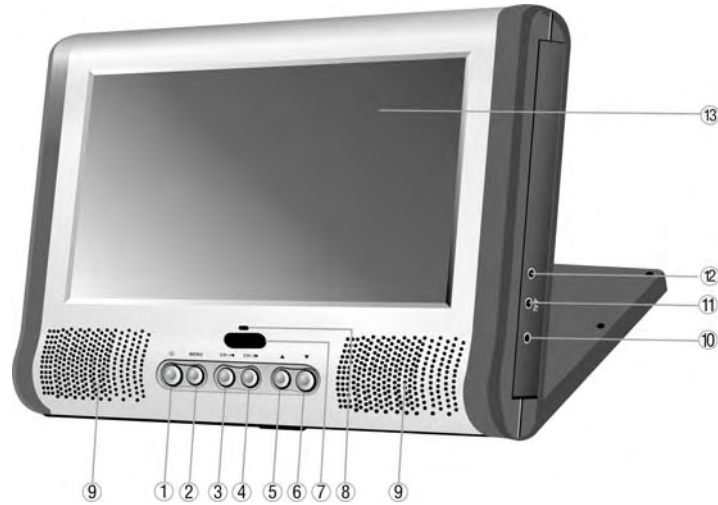
Auto channel searching function.

# Table Of Contents

<b>Introduction</b> -----	1
<b>Important Safety Instructions</b> -----	2
<b>Product Features</b> -----	4
<b>Table of Contents</b> -----	5
<b>Product Description</b> -----	6
Main Panel -----	6
Rear Panel-----	7
<b>Remote Control Description</b> -----	8
<b>Preparation of Remote Control</b> -----	10
<b>Rechargeable Battery</b> -----	11
<b>System Connections</b> -----	14
Power Supply Connection -----	14
Connecting to a TV -----	14
Connecting to an Amplifier-----	15
Connecting to External AV Signal Source-----	15
Connecting to a DC Adapter -----	16
Connecting to a Headphone-----	16
Connecting to CATV Antenna-----	17
Connecting to External Antenna(1)-----	17
Connecting to External Antenna(2)-----	18
<b>TV Setup</b> -----	20
<b>Troubleshooting</b> -----	21
<b>Specifications</b> -----	22

# Product Description

## Main Panel

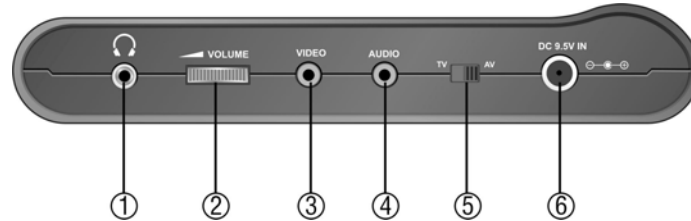


1. **Power button**  
Press to turn on or off the power.
2. **MENU button**  
Press to enter or exit the setup menu.
3. **CH / ◀ button**  
In TV mode, press to select channel.  
In the menu, press to adjust the value.
4. **CH +/ ▶ button**  
In TV mode, press to select channel.  
In the menu, press to adjust the value.
5. **▲ button**  
Press to select item in the setup menu, used as ▲ direction button.
6. **▼ button**  
Press to select item in the setup menu, used as ▼ direction button.
7. **Remote sensor**  
IR receiver for remote control operation.
8. **Power Indicator**  
In standby mode, the light will turn off; in working status, it turns green.
9. **Speakers**  
Output high quality stereo sound.
10. **TV Antenna jack (1)**  
Used to connect to the external antenna.

## Product Description (continued)

11. **TV Antenna jack (2)**  
Used to connect to the external antenna or the CATV connecting line.
12. **TV Antenna jack (3)**  
Used to connect to the external antenna.
13. **LCD screen**  
7" color TFT LCD screen clearly display the data.

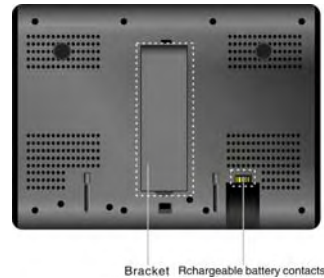
### Left Panel



1. **Headphone jack**  
When the headphone is plugged, the internal speakers output will turn off automatically.
2. **Volume Control knob**  
Used to adjust the volume of the headphone and speaker.
3. **Video Input/Output Jack**  
Used to connect to an external monitor for video signal output or external video source for video signal input.
4. **Audio Input/Output Jack.**  
Used to connect to audio device for audio output or audio source for audio signal input.
5. **TV/AV Switch**  
Switch to TV to receive TV programs and output AV signal; switch to AV to input AV signal.
6. **DC 9.5V Input Jack**  
Used to connect the AC adapter or DC adapter.

### Rear Panel

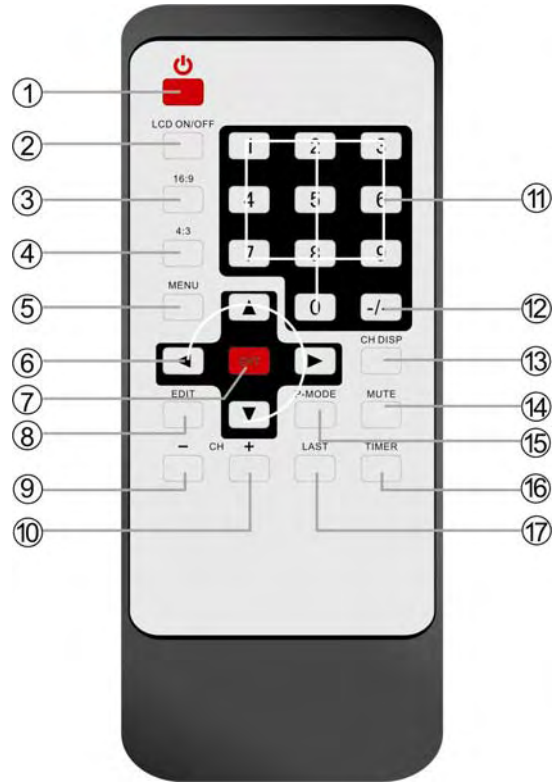
When using the unit, pull the bracket on the rear panel out, and place the unit resting on the table.





# Remote Control Description

## Remote Control



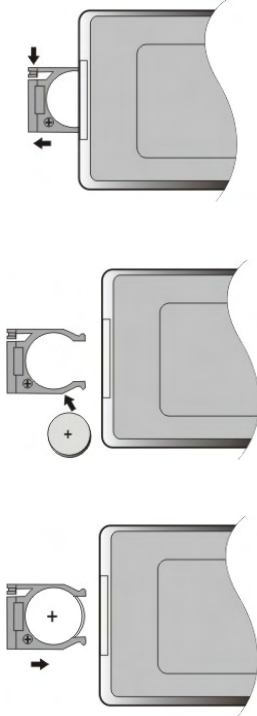
# Remote Control Description

---

- 1. Power button**  
Press to access or exit standby mode.
- 2. LCD ON/OFF button**  
Press to turn on or off the LCD screen display.
- 3. 16:9 button**  
Press to change the screen aspect ratio to 16:9.
- 4. 4:3 button**  
Press to change the screen aspect ratio to 4:3.
- 5. MENU button**  
Press to enter or exit the setup menu.
- 6. Direction buttons (▲▼◀▶)**  
Press to select or adjust items.
- 7. ENT button**  
Press to confirm the selection in setup menu.
- 8. EDIT button**  
In TV mode, press to edit the channels.
- 9. CH - button**  
In TV mode, press to select channels backward.
- 10. CH + button**  
In TV mode, press to select channels forward.
- 11. 0-9 number buttons**  
Select numbers by pressing these buttons.
- 12. -/-- button**  
In TV mode, press this button and the additional number buttons to select item numbers which are greater than 9.
- 13. CH DISP button**  
Press to display the status information, press again to cancel the display.
- 14. MUTE button**  
Press to turn on/off the speaker output.
- 15. P-MODE button**  
Press to change the current picture mode among standard, memory, soft and light.
- 16. TIMER button**  
Press to display the sleep time on the screen, and then use the ▲▼ to select sleep time.
- 17. LAST button**  
Press to return to the previous channel that you have viewed.

## Preparation of Remote Control

- The battery size is CR2025
- Refer to the drawing below, to remove the battery receptacle.
- Insert the battery with the correct polarity facing up according to the mark on the battery holder.
- Re-insert into the remote control.



### Usage of remote control

For best results, please aim the remote control directly at the unit's remote sensor. Please operate the remote control within angles about 60 degrees and distance about 5 meters without obstructions between the remote control and the unit.



- The life of the battery is about six months in normal use. Please replace the battery when the remote control is not so sensitive.
- Please take out the battery when the remote control is not used for a long period time. A battery may leak from long periods of non-use.

# **Rechargeable Battery Description**

## **About Rechargeable Battery Pack**

The unit can be connected with a lithium polymer rechargeable battery that attaches to the bottom of the unit. Your new battery should be fully charged before initial use. Charging time is normally about 4 hours. A fully charged battery delivers about 2.5 to 3 hours of use, but playing time varies from disc to disc. If the battery will not be used for a long period of time, fully charge the battery prior to storage.

Working conditions and precautions of the battery

- Battery should only be used and charged when temperatures are between 32-80F.
- Never put the battery in fire or water.
- Do not expose the battery to high temperatures or store in hot, sunny places.
- Maintain well-ventilated conditions around the product, avoiding heat. Don't put the product on bed, sofa or anything that may block ventilation to the product.
- Do not open the battery.
- Never charge the battery for more than 8 hours. Detach battery immediately after charging is complete if it is not being used. When charging the battery, the light on the battery will turn red, when the charging is complete or the battery is being used, the light will turn green.
- Detach battery when not in use.
- When the battery is weak, there will be a mark displayed on the LCD screen, and about one minute later, the unit will power OFF automatically.

## Rechargeable Battery Description

### Battery Pack Attaching and Placement

The unit's power supply is the AC power adapter or the battery pack. The battery pack can be used as a stand.

Refer to the following steps for attaching the Battery Pack:

1. Place the unit on a soft and smooth surface with its back cover facing UP (to avoid scratching the screen).
2. Position the Battery Pack directly toward the battery slot on the back cover of the unit.
3. Align the pins on the battery pack with holes on the unit until you hear it click and it locks into place.



After attaching the Battery Pack, place the unit LCD screen in normal position. The attached Battery Pack serves as a stand.



When used in a vehicle, the unit is placed into a sturdy carrying Bag/Mount. The Bag/Mount is easy to attach to a headrest and fits on most vehicle headrest types. This is convenient for the rear seated passengers to view the screen.

## Rechargeable Battery Description

### Charging the Battery Pack

The battery must be attached to the unit to charge it. Plug the Power Adapter into the unit's DC 9.5V IN Jack, which is located on left of the unit. Plug the other end of the Power Cord into a wall Outlet.

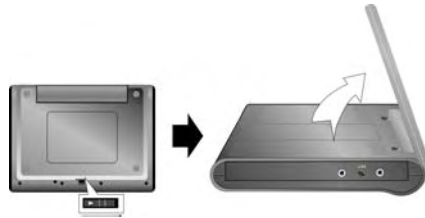


### Detaching the Battery Pack

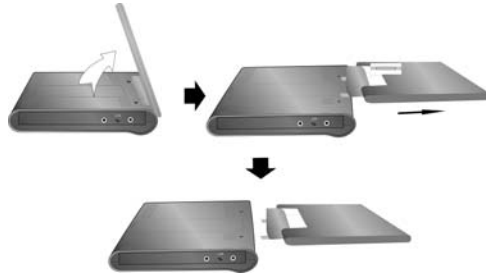
If the unit is not going to be used for long periods of time, the Battery Pack should be detached.

Make sure the power is turned OFF before detaching the Battery Pack. After detaching the battery pack, take care when handling the unit.

1. Place the unit on a soft and smooth surface with its back cover up to avoid scratching the screen.



2. Press the button located on the backside of the unit to unlock the battery pack and while pressing the button pull the battery pack out from the unit.



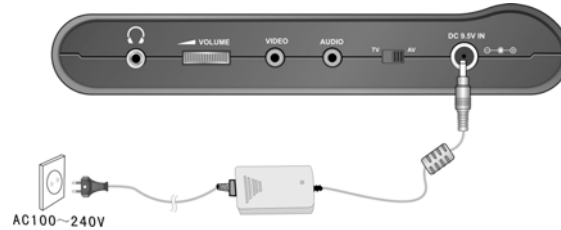
**NOTE:** When attaching or detaching the battery pack, make sure to protect the LCD screen.

## System Connections

- Before plugging the power cord into an AC outlet, make sure that all other connections have been made as described below.
- Always ensure that the unit, TV and any other electrical components are switched OFF before connecting to the unit.

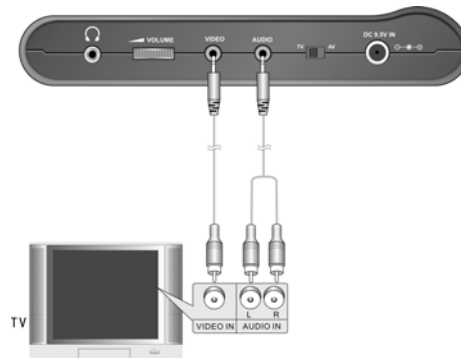
### Power Supply Connection

Connect the supplied adapter to the side of the unit in the jack marked "DC 9.5V IN". Plug the polarized two-prong end of the power cord to an AC100-240V outlet. If you have difficulty inserting the plug, turn it over and reinsert it. If the unit will not be used for a long time, disconnect the plug from the outlet.



### Connecting to a TV

Use the audio/video cable to connect the audio/video output of the unit to the audio/video input of the TV. Ensure that you observe the color coding when connecting audio and video cables. Switch the TV/AV to TV.

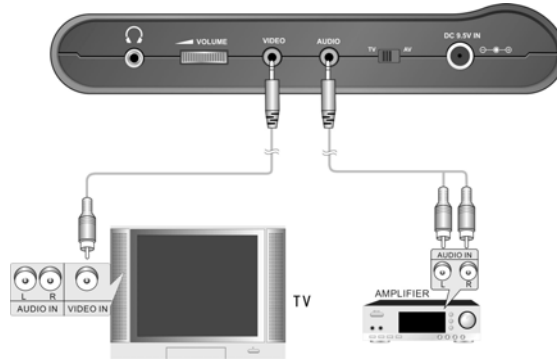


**In TV mode, it outputs an analog audio signal.**

# System Connections

## Connecting to an Amplifier

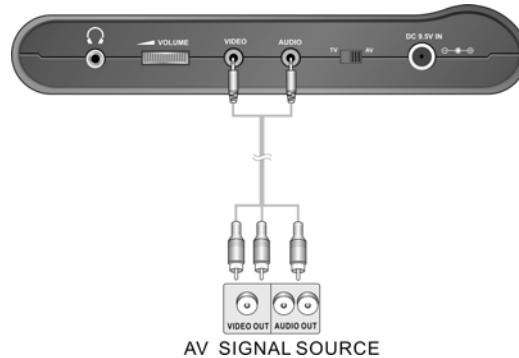
The unit can be connected to an amplifier. Plug the supplied A/V cable into the audio jack on the left side of the unit and plug the other end into an audio input on the amplifier. Please refer to the equipment's manual of your amplifier before connecting. Switch the TV/AV to TV.



In TV mode, it output analog audio signal.

## Connecting to an External AV Signal Source

The unit supports AV input function, it can be connected to the external AV signal source, such as a DVD, follow the below figure to connect and switch the TV/AV to AV.

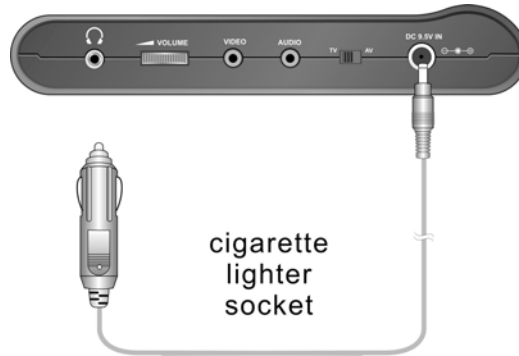




## System Connections

### Connecting to a DC Adapter

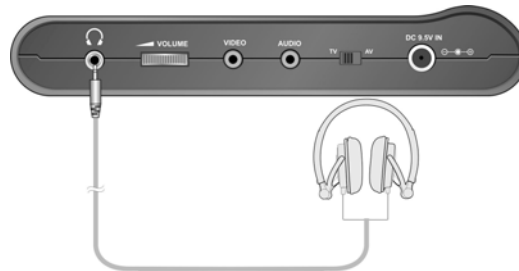
Connect one end of the specific DC adapter to the "DC 9.5V IN" jack on the left panel of the unit, and connect the other end to the cigarette lighter socket in the car as shown below:



- **The power supply of the car is not suitable for charging the battery.**
- Do not connect the unit to the car adapter when you start the car.

### Connecting to a Headphone

Connect the headphone to the headphone jack on left side of the unit.



When headphones are connected to this jack, the speaker will be turned off automatically

## **System Connections**

---

### **Connecting to CATV antenna**

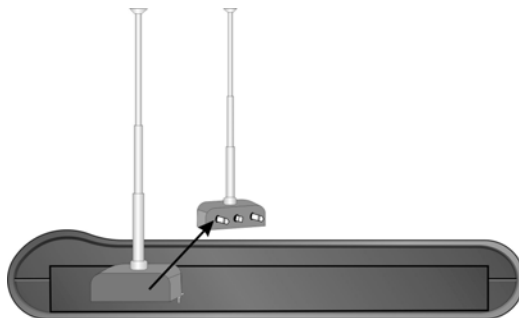
Connect one end of the provided connecting line to the TV signal input jack on the right panel of the unit, and the other end to the CATV signal source, as shown below:



After connection, switch the TV/AV to TV.

### **Connecting to external antenna (1)**

Plug the provided external antenna (1) to the TV signal input jack and two fixing jacks on the right panel of the unit, as shown below:



After connection, switch the TV/AV to TV.

## System Connections

---

### Connecting to external antenna (2)

Plug the provided external antenna (2) to the TV signal input jack on the right panel of the unit, as shown below:



After connection, switch the TV/AV to TV.

## TV Setup

---

### Preparation

1. Connect the unit to the external antenna or CATV connecting cord.
2. Connect to power supply.
3. Turn on the power of the unit.
4. Switch the TV/AV to TV.
5. Press the MENU button to enter the setup menu.

### Picture Setup Menu

Press the MENU button once to enter the Picture setup menu, as shown on the below:

PICTURE	
COLOR	30
CONTRAST	30
BRIGHT	30

The items in the menu are used to adjust the brightness, contrast, and color of the screen.

Press the ▲ ▼ button to select the desired item. Then use the ◀ or ▶ button to adjust the value.

You can adjust the items in this menu according to the environment around for your preference.

### TV Setup Menu

Press the MENU button twice to enter the TV setup menu, as shown on the below:

TV SETUP	
TV SIGNAL	AIR
CHANNEL	2
FINE	55.25VL
SKIP	ON
AUTO SCAN	OFF

In the TV Setup menu, press the ▲ ▼ button to select item.

#### 1. TV Signal

Press the ▲ ▼ button to select TV SIGNAL, press the ▶ ◀ button to select CATV or AIR.

#### 2. Channel

Press the ▲ ▼ button to select CHANNEL, press the ▶ ◀ button to select the channel number.

## TV Setup

---

### 3. Fine Tuning

When the picture is not very good, you can perform fine tuning.

Press the ▲▼ button to select FINE, press the ▶◀ button to start fine tuning, when the video and audio effects effect are best, stop the fine tuning and the program will be stored automatically.

### 4. Skip

Press the ▶◀ button to select ON, the channel will be skipped when use the CH-/+ to select channels.

### 5. Auto Scan

Press the ▲▼ button to select AUTO, press the ▶◀ button to select ON. It will start auto searching. The number of found channels will be displayed on the below of the screen. It will take a few minutes, when finishing searching, it will exit and return to the first searched channel, and memorize the programs in sequence automatically.

## **Function Setup Menu**

Press the MENU button three times to enter the Function Setup menu, as shown on the below:

FUNCTION	
LANGUAGE	ENGLISH
DEFAULT	

In the Function setup menu, press the ▲▼ button to select item.

#### 1. Language

Press the ▲▼ button to select LANGUAGE, press the ▶◀ button to select different language.

#### 2. Default

Press the ▲▼ button to select DEFAULT, press the ▶ button to return to the default status.

## Troubleshooting

---

---

Problem	How To Check
<b>There is no sound.</b>	<ul style="list-style-type: none"><li>• Make sure the system connection is correct.</li><li>• If wired headphones are plugged in, unplug them.</li><li>• Make sure the volume is not turned down.</li></ul>
<b>There is no picture.</b>	<ul style="list-style-type: none"><li>• Make sure your system connection is correct.</li><li>• Make sure the TV antenna is connected.</li><li>• Make sure the unit is turned on.</li></ul>
<b>The remote control does not work.</b>	<ul style="list-style-type: none"><li>• Make sure there is no obstruction between the remote control and the unit.</li><li>• Make sure you are pointing the remote control towards the unit.</li><li>• Make sure battery is inserted correctly (check polarity).</li><li>• Replace a weak battery.</li></ul>

### **Other possibilities:**

Static or other external interference may cause the unit to function abnormally. Unplug the power-supply cord from the outlet and plug it in again to reset the unit so that normal operation can resume. If you are still having problems, then disconnect the power to the unit and consult a qualified technician.

## Specifications

TFT screen size		7 inches
TV System		NTSC
Audio Out	Analog Audio Out	Output Level: $1.5V_{\pm 1.0}^{0.2}$ , Load: $10K\Omega$
Video Out	Video Out	Output Level: $1V_{P-P} \pm 0.2$ , Load: $75\Omega$ Unbalanced Negative
Power	AC100-240V 50/60Hz	
Power Consumption	>15W	
Dimension	200mmX154mmX41mm	
Weight	About 1.0 Kg	

**DESIGN AND SPECIFICATIONS ARE SUBJECT TO CHANGE WITHOUT NOTICE**



Printed on  
Recycled Paper



## Free Manuals Download Website

<http://myh66.com>

<http://usermanuals.us>

<http://www.somanuals.com>

<http://www.4manuals.cc>

<http://www.manual-lib.com>

<http://www.404manual.com>

<http://www.luxmanual.com>

<http://aubethermostatmanual.com>

Golf course search by state

<http://golfingnear.com>

Email search by domain

<http://emailbydomain.com>

Auto manuals search

<http://auto.somanuals.com>

TV manuals search

<http://tv.somanuals.com>