

Windows BLL Generator

User Guide



Windows BLL Generator User Guide V1.10, last modification January 26, 1999

Copyright © 1988-1998 Lasergraphics, Inc. All Rights Reserved.

20 Ada

Irvine, California 92618

+1-949-753-8282

Technical Support Department: +1-949-753-8292

Monday through Friday

7:30 A.M. to 5:30 P.M., US Pacific Time Zone

Lasergraphics BBS (949) 727-9429

Internet: <http://www.lasergraphics.com>

LFR, LFR PLUS, *Personal* LFR, *Personal* LFR PLUS, LFR-X, LFR *Mark II*, LFR *Mark II* - Digital Photography Model, LFR *Mark III*, LFR *Mark III* - Digital Photography Model, LFR *Mark V* - Digital Photography Model, LFR *Mark VI* – Digital Photography Model, RascolPort, WinRascol and MacRascol are trademarks of Lasergraphics, Inc. and Rascol is a registered trademark of Lasergraphics, Inc. Windows is a trademark of Microsoft Corporation. Adobe Type Manager is a registered trademark of Adobe Systems Inc. Ektachrome and Kodacolor are registered trademarks of Eastman Kodak Company. All other brand names and product names are trademarks or registered trademarks of their respective companies.

While great care was taken to prepare this user guide, Lasergraphics, Inc. disclaims all warranties with regard to this information including all implied warranties of satisfactory quality and fitness. Measurements are approximate and no responsibility is taken for any error, omission or misunderstanding in these particulars, which do not constitute an offer or contract. In no event shall Lasergraphics, Inc. be liable for any special, indirect or consequential damages or any damages whatsoever resulting from loss of use, data or profits, whether in an action of contract, negligence or other tortuous action, arising out of or in connection with the use or performance of this information. No representation or warranty whatever is made or given either during negotiation, in particulars or elsewhere.

Acknowledgements

The combined effort of many people is required to make a quality software product. This is an undoubtedly incomplete list of dealers, customers, coworkers and friends who have been helpful in one way or another in making Windows BLL Generator into what it is today.

Hanspeter Andermatt, Wolfgang Beaugrand, Xavier Bengoechea, Tim Bochnak, Murray Bowman, Dr. Ralf Brandes, Tony Brown, Falah Chebbo, Larry Cole, David Davies, Mike DeLucca, Dr. Stefan Demetrescu, Jo Elliot, Jon Elion, LtCol Dr. Doug Erickson, David Hard, Wenxin He, Ron Herman, Jack Hobbs, Andreas Hölling, Thomas Hofmeister, Genie Jacobsen, Dr. Jürgen Krüger, Bill Kruki, Jörg Kunz, Klaus-Norbert Laroche, Beat Lechmann, Wai-Hung Lee, Adrian Martin, Bob McCormack, Rod Miller, Martin Müller, Rick Narveson, Chris Olsen, Doris Rusch, Doug Schafer, Steffen Seeber and Bill Smithson.

Thank you all.

This software is based in part on the ZLIB compression library written by Jean-loup Gailly and Mark Adler.

Thank you for providing incredibly useful code.

Contents

Chapter 1: Introduction	9
What You Need	10
Required Hardware	10
Required Software.....	10
About this Guide	11
What's new	12
Windows BLL Generator Features	13
Various Output Types.....	13
High-Resolution.....	13
True Color	14
Easy to Use and Highly Compatible.....	14
Chapter 2: Express Setup	15
Installing Windows BLL Generator	16
Installing BLL Generator from the Web Site	16
Installing Windows BLL Generator using Windows BLL Generator installation disks	16
Chapter 3: Software Installation	17

Running setup.....	18
Adding a BLL-Generator.....	19
Chapter 4: Printing your first image	21
Printing from an Application.....	22
Viewing a BLL.....	26
Chapter 5: Principle of Operation	27
Introduction	27
Printing from Windows on a PC without Film Recorder	29
Important Concepts	31
Resolution.....	31
Color Fidelity.....	32
Bitmaps and Objects	33
Graphics	33
Text	33
Which Applications Create Bitmaps or Objects	34
Chapter 6: Reference	35
Printer Settings	35
Resolution.....	35
Orientation and Paper Size	36
Film Type.....	37
Non-LFC based Film Types	37
LFC-based Film Types.....	38
Background Color.....	39
Scaling.....	39
Minimum Exposure Time.....	39
Color Balance	39
Contrast Gamma	40
Using the Windows 95/98 driver.....	41

Printer settings in Windows 95/98	41
Color balance and gamma correction	44
Miscellaneous options	45
Changing the Default Printer Settings in Windows 95/98	47
Using the Windows NT driver	48
Printer settings in Windows NT	48
Storing Changed Settings	51
Changing the Default Printer Settings in Windows NT	52
Managing BLL-Generators	53
Adding a BLL-Generator	53
Changing Destination Path	54
Deleting a BLL-Generator	54
Modifying Driver Options	55
Chapter 7: Uninstalling.....	57
When to use the Uninstaller	57
How to use the Uninstaller.....	58
Chapter 8: Tips and Tricks	59
Specific Applications.....	60
Adobe Type Manager (ATM).....	60
Arts & Letters.....	60
Corel Draw	60
Corel Draw 7	60
CorelDRAW 8.....	61
Freelance Graphics for Windows Ver 1.0	61
Freelance Graphics 97	61
Persuasion	61
PhotoStyler.....	62
Word, Write	62

Appendix A: Specifications 63

Glossary 67

Index 71

Chapter 1: Introduction

This is the user manual for the Windows BLL Generator. This product is used to generate platform and application independent BLL files that can be used for imaging on remote Lasergraphics film recorders.

Windows BLL Generator supports PCs running Windows 95, Windows 98, Windows NT 4.0 and Windows NT 5.0.

This chapter explains the features of the Windows BLL Generator.

What You Need

You need the following hardware and software to run Windows BLL Generator:

Required Hardware

- Any IBM® PC compatible machine with a 486 processor or better, Pentium or better recommended.
- 16 MB of memory when running Windows 95/98 and 32 MB when running Windows NT. More memory may be required for complex images or images that contain large bitmaps.
- Minimum 4 megabytes of disk space for Windows BLL Generator programs plus additional storage for images. The amount of additional storage required depends on the type of images. Simple presentation slides will take between 100 kilobytes to 2 megabytes, complex and high-resolution slides run from 5 megabytes up to 630 megabytes for a true color uncompressible 16000 line resolution image. Generally, 100 megabytes free disk space will be plenty.

Required Software

- Microsoft Windows 95, Windows 98, Windows NT 4.0 or Windows NT 5.0 operating system.
- A Windows application that can print to a Windows printer driver.

About this Guide

This guide explains how to set up and use Windows BLL Generator.

This guide assumes that you already know how to use Microsoft Windows. If you are new to Windows, review your *Microsoft Windows User's Guide* before proceeding.

Screen illustrations in this guide are meant to be representative, not necessarily exact duplicates of screens that appear on your display.

What's new

Windows BLL Generator replaces Windows BLL Generator 3.15 for Windows 95 and WinRascal 3.15 for Windows NT. Major parts of Windows BLL Generator 3.15 were rewritten to increase performance, simplify its use, and take advantage of new features of Windows 95 and Windows NT.

Windows BLL Generator offers these advantages over previous versions:

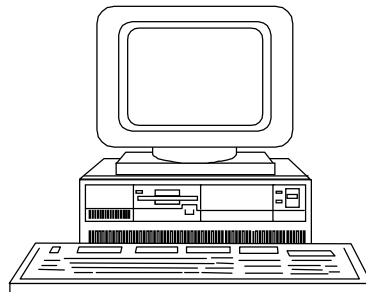
- One package supports Windows 95/98 and Windows NT 4.0/5.0
 - Simple installation
 - Same installation and interface on Windows NT and Windows 95/98
 - Installation from hard drive or network
 - Long filenames supported
 - BLLs can be previewed
 - A new high-compression BLL format generates smaller BLLs
- **Note:** Windows 3.1x is not supported by Windows BLL Generator. Windows BLL Generator 3.15 is the last version to support Windows 3.1x.
- **Note:** LFR and LFR+ type film recorders are not supported in Windows BLL Generator. WinRascal 4.0 will continue to service this film recorder type.

Windows BLL Generator Features

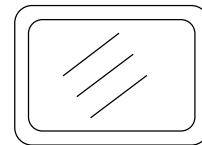
Windows BLL Generator adds a new dimension to all of your visual communications by letting you produce professional-quality presentation graphics—right at your desk.

Various Output Types

Windows BLL Generator takes images produced by any Windows application and prints the images on a Lasergraphics LFR series film recorder to make 35mm slides, 35mm prints (negatives), Polaroid prints, 6x7 cm or 4x5 film transparencies or prints (negatives).



Slides



Transparencies

High-Resolution

With the Lasergraphics Film Recorder (LFR™), Windows BLL Generator in combination with WinRascal or MacRascal produces brilliant color images on film. The LFR *Mark VI* has a maximum resolution of 16384 lines which produces sharp images with over 700 times the image resolution (total number of dots in an image) of a VGA screen.

Name	Short	35mm resolution	120/220/4x5 resolution	Available on
Fast	2k	2048x1365	2048x1680	All
Fine	4k	4096x2731	4096x3360	All
Extra	8k	8192x5461	8192x6719	Mark III and above
Ultra	16k	16384x10923	16384x13438	Mark VI

True Color

Windows BLL Generator supports **24-bit color**, which enables you to produce life-like pictures with any of over 16.7 million colors. 24-bit color refers to the way color information is stored in the image. 24-bit color is sometimes called “true-color” because it reproduces the full range of color visible to the human eye.

Easy to Use and Highly Compatible

Windows BLL Generator is compatible with all Microsoft Windows 95, Windows 98 and Windows NT applications that provide the **Print** command. To print images the Windows BLL Generator, you simply invoke the Print command from your Windows application. Images will be sent from your application to Windows BLL Generator for processing.

Chapter 2: Express Setup

This section explains how users with previous WinRascal experience can get Windows BLL Generator up and running quickly. If you are new the Windows BLL Generator or don't consider yourself a seasoned computer user, please take the time to study the chapters beginning with "Chapter 3: Software Installation" on page 17.

Installing Windows BLL Generator

Windows BLL Generator is freely available on the Lasergraphics web site www.lasergraphics.com. It is also part of the WinRascol 4 distribution disks for convenience. Note that you may not distribute the WinRascol 4 distribution disks or their contents. The Windows BLL Generator downloadable from Lasergraphics' web site (www.lasergraphics.com) can be freely distributed. If you don't have access to the Internet, please ask your dealer for a copy.

Installing BLL Generator from the Web Site

Run "WinBLL.exe". Follow the prompts of the setup program.

Click Start->Programs->WinRascol32->BLLConf and select "Add/Manage BLL Generators" to install one or more BLL generator drivers.

Installing Windows BLL Generator using Windows BLL Generator installation disks

Run "setup.exe". Follow the prompts of the setup program. Start "WinRascol32->BLLConf" and select "Add/Manage BLL Generators" to install one or more BLL generator drivers.

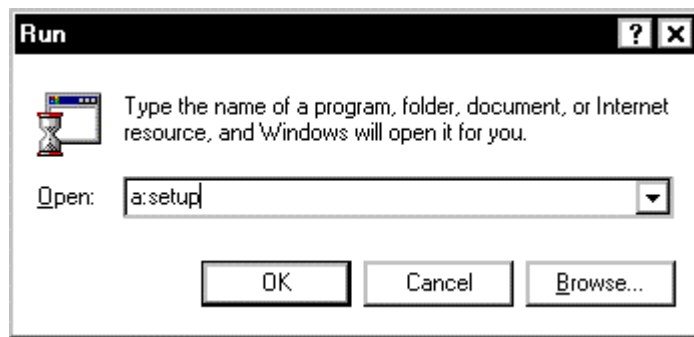
Chapter 3: Software Installation

This section explains how to install Windows BLL Generator on your computer. The installation is performed in two steps, the initial installation and running BLLConf.

Running setup

These steps perform the initial installation of the Windows BLL Generator package.

- Close all programs currently running.
- Insert disk 1 of the Windows BLL Generator installation disk set, skip this step if you've downloaded the Windows BLL Generator from the web site.
- Press **Start** on the Windows tool bar, then select **Run**.
- If you are using installation disks enter "a:setup" in the "run" dialog box as follows:



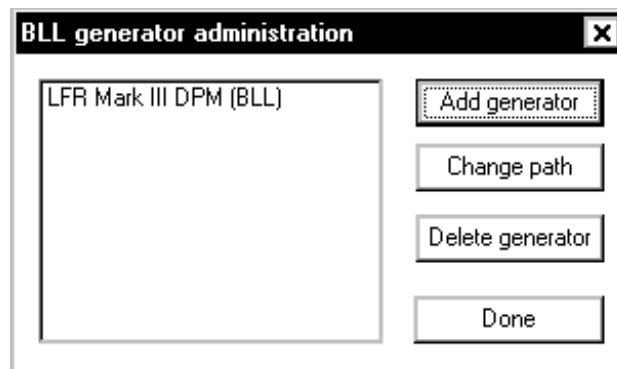
- If you've downloaded the Windows BLL Generator or have received it from another source, use the **Browse** button to point to it.
- Press **OK**. Setup now prepares the installation.
- Press **Next** after reading the introductory screen.
- Press **Next** after reading the readme file.
- You will be asked to select a destination directory at this time. It is strongly suggested that you use the default directory offered by the installation program. Press **Next**.
- Setup is now ready to install Windows BLL Generator. Press **Next** to install now.
- Setup will install all program files at this time. Follow setup's instructions to insert additional disks if needed.
- Press **Finish** to exit setup.
- Setup may ask you to reboot your computer in rare cases.

The Windows BLL Generator program files are now installed.

Adding a BLL-Generator

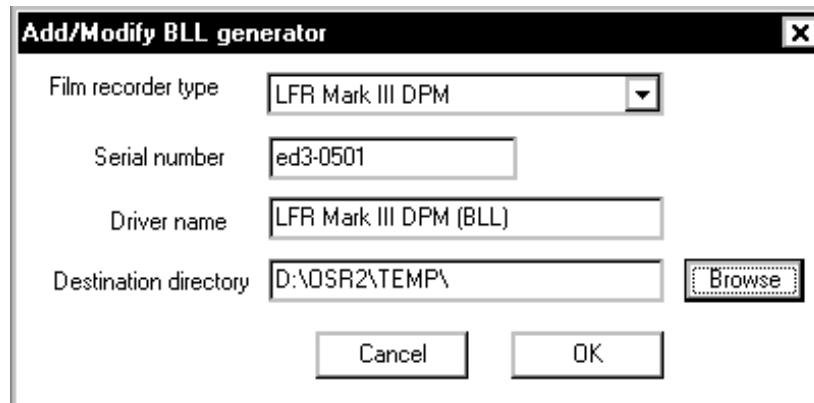
Start **BLLConf** in **Start->WinRascal32**. Select **Add/Manage BLL Generators**.

This dialog will appear:



- Select **Add generator**.

The following dialog is displayed:



- Select the destination film recorder type in **Film recorder type**.
- Enter the serial number of the target film recorder in the **Serial number** edit box.
- Windows BLL Generator will select a default name for you. You can modify the name of the printer driver in the edit box **Driver name**.
- Select the destination directory into which the BLL files will be placed. Windows BLL Generator will select the default temporary file path as default. You should select the network path of a WinRascal drop box if you intend to use a film recorder that is connected to your network. Contact your network administrator for details. You can also select the path of a ZIP-Drive, for example.
- Press **OK** to create the BLL driver.

The BLL driver will now appear in the **BLL-generator Administration** dialog. Press **Done** to exit.

- **NOTE:** For technical reasons, the new BLL-generator will show **LPT1:** to be the selected output port on Windows 95/98 until your computer is rebooted. After reboot, the new generator will show **BLL:.** This affects appearances only, it does not impact operation of the BLL-generator in any way.

Chapter 4: Printing your first image

This guided tour will show you how to print from an application.

You must have completed the software installation successfully to follow this tour.

Printing from an Application

This section will show you how to print an image using Microsoft Wordpad. Wordpad is included in both Windows 95/98 and Windows NT. But you can use any other Windows application instead.

Start Microsoft Wordpad. You will find it in

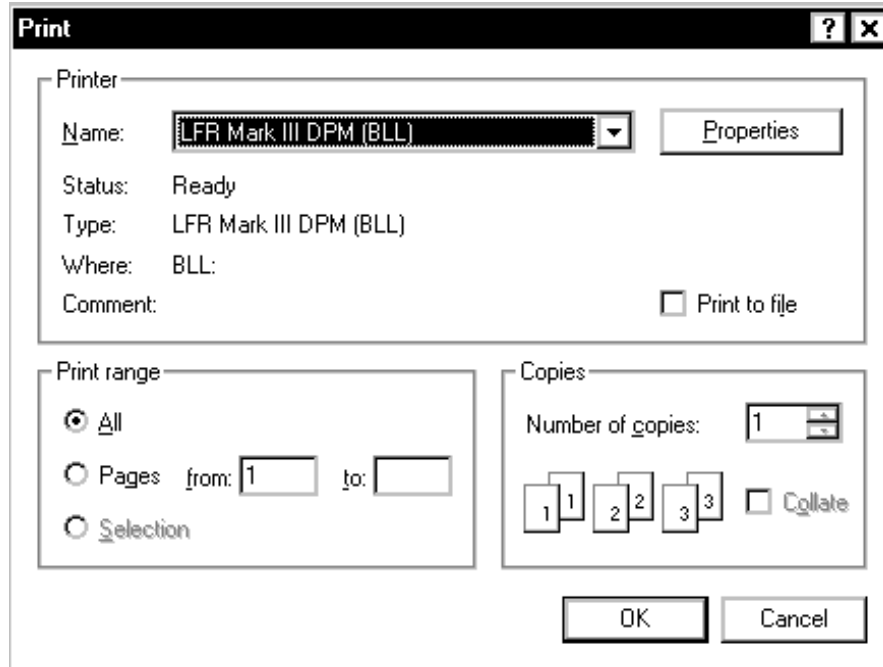
Start->Programs->Accessories->Wordpad.

Punch in a few letters. Wordpad should look like this now:



Feel free to format the text any way you like!

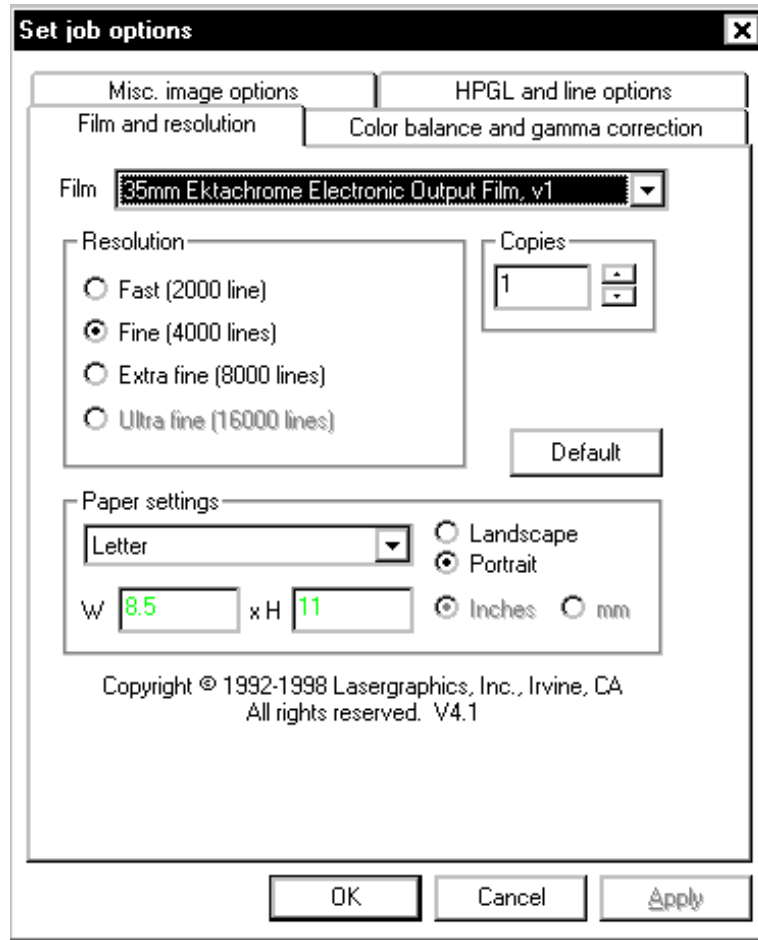
Now open the Wordpad print dialog by selecting **Print...** from the **File** menu.



Select the BLL Generator in the **Name** field.

- **Note:** You should never check the "Print to file" check box.

Now select **Properties**. This will open a dialog that allows you to set film recorder print settings:



This is the Windows 95 film recorder settings dialog. The Windows NT dialog is shown in “Printer settings in Windows NT” on page 48.

- Select the film type you intend to use in **Film Type**.
- Select **Standard Slide** as the page size in **Output Size**.
- Select **White** as **Background Color**. Wordpad assumes white background but doesn't fully paint it.
- Press **OK**.

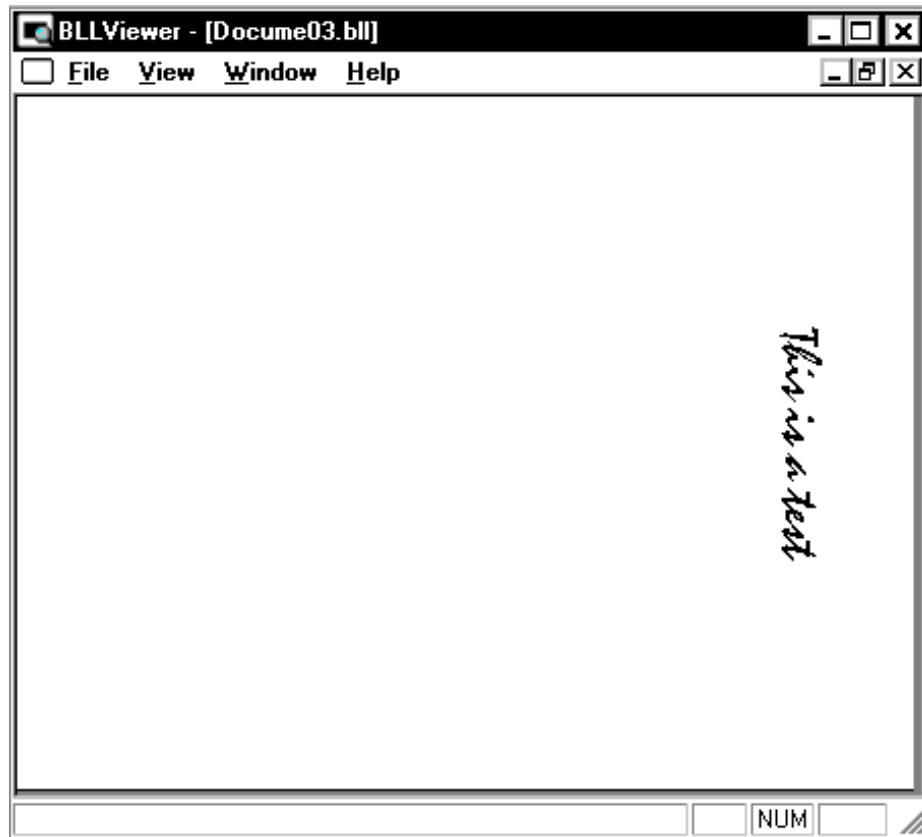
24 *Printing your first Image*

- Now press **OK** in the **Print** dialog. A BLL will be created in the directory you designated at installation time.

Viewing a BLL

You can preview the BLL you just created by using Windows Explorer to locate the file in the directory you designated during installation and double clicking on it.

The BLL Viewer will show you the rastered file:



Note that the printer driver has automatically rotated the image because the film recorder only images in landscape orientation.

Chapter 5: Principle of Operation

This section explains how the Windows BLL Generator and WinRascol work together to produce film output.

Introduction

WinRascol consists of two software components:

- **WinRascol32:** The queue and print manager. It queues print jobs and sends them to the film recorder. WinRascol32 is the same program on Windows 95, Windows 98 and Windows NT.
- **WinRascol Printer Driver, or Windows BLL Generator:** The printer driver is used when you invoke the **Print** command from within a Windows application. Due to architectural differences between Windows 95/98 and Windows NT, there need to be separate printer drivers for each type of operating system.

There are several different ways to use WinRascol:

- The user on a PC with a film recorder attached can print by:
 - Printing directly from an application with the WinRascol Printer Driver, or
 - Adding image files directly to the queue with WinRascol32.
- The user on a PC without a film recorder can:
 - Print from an application with the Windows BLL Generator to make BLL files, or
 - Save images in one of the formats that WinRascol supports directly.

BLLs and other image files should be placed into dropbox directories that are serviced automatically by a PC with WinRascal. If dropbox directories are not accessible, BLL and other image files can be copied to a disk and later added to WinRascal on the PC with a film recorder.

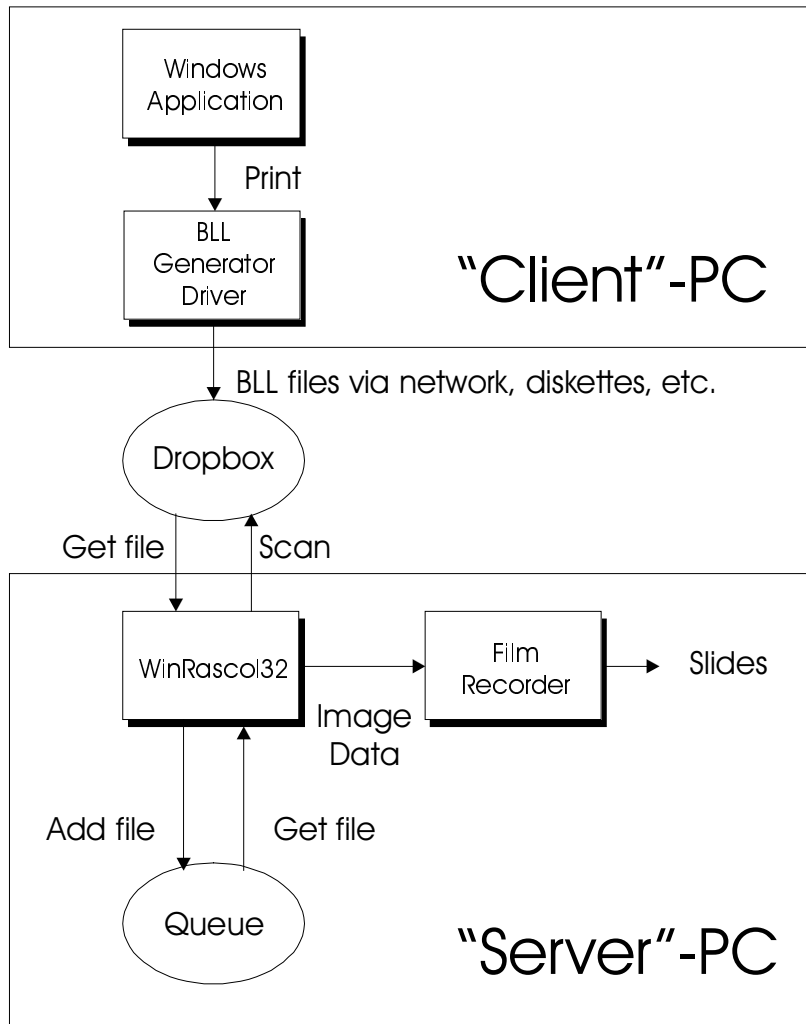
- **NOTE:** Image files in dropbox directories will be automatically deleted after they are printed.

Printing from Windows on a PC without Film Recorder

Producing slides from Windows applications on a PC without film recorder is a simple four-step process.

- Select a BLL-generator Driver as the output device for the Windows application on the PC.
- Create the images with the application.
- Print the images using the Print command from within the application on the client PC.

Here is a diagram showing how this works:



➤ **NOTE:** The dropbox directory can be located on a network server or on the server PC.

Important Concepts

This section explains resolution, color fidelity, and the differences between bitmaps and objects.

Resolution

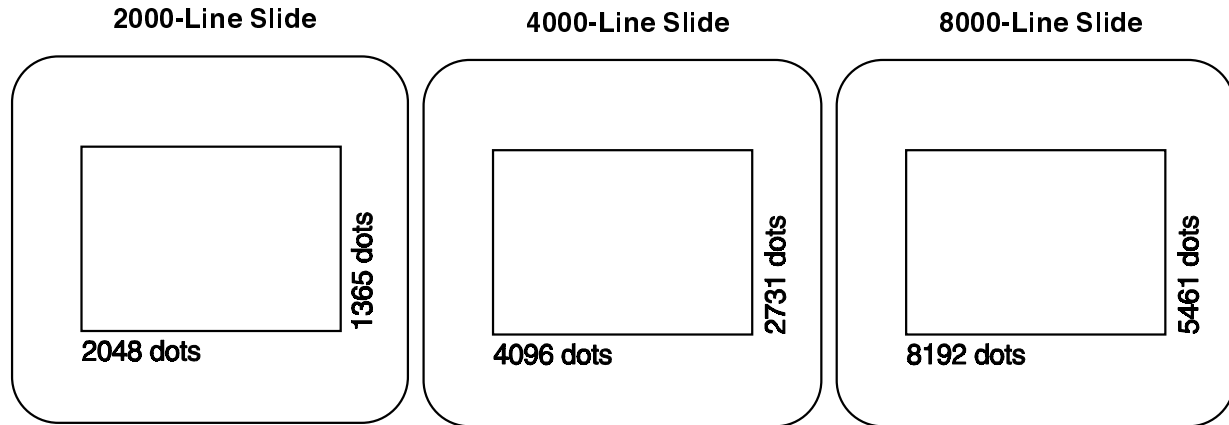
Resolution can be defined in many ways. Dots per inch (DPI) is a common definition, but an impractical one for slides and overhead transparencies because the DPI changes significantly when the image is projected.

The most practical definition of **resolution** is the total number of dots (or pixels) in the image. The following table compares the image resolution of several graphics output devices.

Device	Dots	Image Resolution	approx. DPI
VGA screen	640 by 480	307,200	58 (on 17" CRT)
Most laser printers	2400 by 3276	7,862,400	300
All LFR film recorders	4096 by 2731	11,186,176	2790 (on 35mm film)
LFR <i>Mark III, Mark V</i>	8192 by 5461	44,736,512	5945 (on 35mm film)
LFR Mark VI	16384 by 13438	220,168,192	11890 (on 35mm film)

Images produced by the LFR *Mark VI* contain over 716 times more dots than images on a VGA screen.

When discussing film recorder resolution, the terms 2000-line slide, 4000-line slide and 8000-line slide are commonly used. The number of lines refers to the number of dots across the image. Examples:



- **NOTE:** High end Lasergraphics film recorders can image up to 16384x13448 dots. This is called 16000-line resolution. Some camera backs have a different aspect ratio that enables the film recorder to output at higher vertical resolution like 4096x3362. This is still called 4000-line resolution.

Color Fidelity

Color fidelity refers to the range of colors that can be reproduced in an image.

The range of colors that can be represented is defined by the number of **bits per pixel** used to store an image. The more bits per pixel, the greater the range of colors.

Windows BLL Generator supports 24-bits per pixel, 8 for each of red, green, and blue. This results in 256 shades of each primary color, which can combine to form 16.7 million colors. Each pixel in an image can be a different color.

Bitmaps and Objects

Images can contain **bitmaps**, **objects**, or both. Bitmaps consist of dots or pixels. Objects consist of mathematical descriptions of a shape, such as a polygon or line. Applications that create bitmaps are often called “paint” programs and those that create objects are often called “draw” or “illustration” programs. Both graphics and text can be bitmaps or objects.

Graphics

At high-resolution, bitmaps look the same if the film recorder resolution exceeds the resolution of the bitmap but objects get sharper.

You can usually tell bitmaps from objects by watching how the image is created when it is first displayed on the screen. Bitmaps are usually drawn on the screen from top to bottom in one chunk. Objects are assembled in pieces.

Text

Text can be a bitmap or an object, just as graphics can. Text that is part of a bitmapped graphic with lower than film recorder resolution remains jagged at high-resolution. However, text that is an object can get sharper when output at high-resolution.

Text created with **ATM (Adobe Type Manager)** or **TrueType** fonts is sharp at any size and resolution. In addition, ATM and TrueType fonts will look the same on screen as on the slides printed by WinRascol.

Which Applications Create Bitmaps or Objects

Most images contain either bitmaps or objects, but some images can contain both. Here are some of the more popular applications:

Bitmaps

- Adobe® Photoshop TM
- Aldus® PhotoStyler TM
- Microsoft® Paint
- ZSoft Corp. Publisher's Paintbrush®

Objects

- Aldus® PageMaker®
- Aldus® Persuasion®
- Computer Support Corp. Arts & Letters®
- CoreIDRAW!®
- Harvard® Draw
- Harvard Graphics®
- Lotus Freelance Graphics®
- Micrografx® Charisma TM
- Micrografx® Designer TM
- Microsoft® PowerPoint®
- Microsoft® Excel®

Images from these applications may contain bitmaps that have been imported.

Both

- Deneba Canvas™
- CoreIDRAW™
- PowerPoint™
- Lotus Freelance™

Chapter 6: Reference

This chapter provides detailed information about how to use Windows BLL Generator.

Printer Settings

Many Windows BLL Generator components will let you modify a wide variety of imaging options. This section explains these options in detail. Later sections will explain where these options apply and how to access them.

Resolution

Resolution controls the number of dots in the image according to the following table:

Name	Short	35mm resolution	120/220/4x5 resolution	Available on
Fast	2k	2048x1365	2048x1680	All
Fine	4k	4096x2731	4096x3360	All
Extra	8k	8192x5461	8192x6719	Mark III and above
Ultra	16k	16384x10923	16384x13438	Mark VI

Note that the time it takes to image a slide will increase with the resolution setting approximately as follows:

Resolution	2k	4k	8k	16k
Relative resolution	0.25	1	4	16
Relative imaging time	0.75	1	4	16
Approximate imaging time	30s	40s	150s	600s

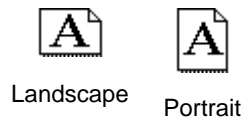
Relative resolution is the total number of pixels relative to a 4k slide.

Relative imaging time is the time it takes to image relative to a 4k slide, on a theoretical basis.

Approximate imaging time is the time it minimally takes to image a slide in real life.

Orientation and Paper Size

Orientation specifies whether the output should be in **Landscape** or **Portrait** mode.



Paper size determines the paper dimensions returned to the application.

- **NOTE:** Paper size does not correspond to the actual size of the film.
- **NOTE:** Make sure to match the paper size and orientation settings of the printer driver with those of your application. Some applications will ignore paper dimensions returned by the printer driver. Paper size and orientation mismatches can lead to badly sized images.

Film Type

Film Type specifies the type of film in the camera back connected to the film recorder. Windows BLL Generator supports two types of film, LFC-based and non-LFC based. LFC based film choices rely on so-called LFC files that reside in the LGDATA\LFC directory. These LFC files contain transfer functions for specific film/film recorder combinations. The transfer functions of non-LFC based films have been pre-programmed into the film recorders.

- **NOTE:** Choose LFC-based films over non-LFC-based films when possible!

Non-LFC based Film Types

Use **Ektachrome 100 (35mm)** with:

- 35mm camera back
- ISO daylight balanced slide film such as Ektachrome 100, Fujichrome 100 or Agfachrome 100
- All film recorders except the Digital Photography Models

Use **Polachrome** with:

- 35mm camera back
- Polachrome instant 35mm slide film. You process the slides yourself using the Polaroid 35mm Autoprocess System. Polachrome slides are only draft quality, but are useful if time or confidentiality is important.
- All film recorders

Use **Polaroid 339** with:

- Polaroid camera back
- Polaroid Instant Print film, which produces 4"x 3" instant prints. It is convenient for making test prints and single print images.
- All film recorders except the Personal LFR and the Personal LFR PLUS

Use **Polaroid 669** with:

- Polaroid camera back
- Polaroid Instant Pack film, which produces 3 3/4"x 2 7/8" instant transparencies
- All film recorders except the Personal LFR and the Personal LFR PLUS

Use **Polaroid 691** with:

- Polaroid camera back

- Polaroid 691 Overhead Transparency film, which produces 3 3/4"x 2 7/8" instant transparencies
- All film recorders except the Personal LFR and the Personal LFR PLUS

Use **Kodacolor 100** with:

- 35mm camera back
- ISO daylight balanced print film
- All film recorders except Digital Photography Models

Use **Ektachrome 100 (4x5)** with:

- 4x5 camera back
- Ektachrome 100 4x5 film
- All film recorders except the Personal LFR., Personal LFR PLUS, LFR-X, and the Digital Photography Models

Use **Ektachrome 100 (120/220)** with:

- 120 or 220 camera back
- Ektachrome 100 film
- LFR Mark II and LFR Mark III standard film recorders only

LFC-based Film Types

In addition, Windows BLL Generator supports Lasergraphics Film Calibration (LFC) files. These LFCs support a variety of film types such as Kodak Gold 100 Plus, Vericolor III, etc. Each Lasergraphics Film Calibration file provides calibration data for one film on one specific film recorder model. For example, the 35mm Vericolor III LFC file for LFR *Mark III* will be different from the one for LFR *Mark III* - Digital Photography Model.

Background Color

Background Color specifies the background color of the image. This setting is ignored if the application explicitly sets the background color in the image. Use Background Color to set the color of unpainted regions to white for text applications like Word. Otherwise, you might end up with black text on black background!

Scaling

Scaling controls how the image is scaled for output. 100% keeps the image size unchanged. To shrink the image, set the value to less than 100%. To expand the image, set the value to greater than 100%. The range of valid scaling values is 20% to 400%.

Minimum Exposure Time

This setting applies mostly to very old film recorders that have no internal slice mark control mechanisms. Minimum Exposure Time controls the exposure time of the film recorder to eliminate slice marks (periodic faint horizontal lines) on the output. Normally Fastest Possible should be selected. If there are slice marks on the output slide, set the minimum exposure time to 1.5 times the normal processing time of the image. If slice marks are still there, increase the value and try again.

Color Balance

Color balance controls the percentages of red, green and blue used in the film recorder. Normally, each of the three colors is set to 100%. The range of valid color balance values is 25% to 400%.

Contrast Gamma

Contrast Gamma allows for very fine contrast adjustment. The range of valid gamma contrast values is 0.14 to 7.0. However, values between 0.25 and 2.0 are usually more practical. By adjusting the gamma contrast value you can change the midtones of the image without affecting the highlights. As the gamma contrast value decreases, output midtones become darker. As the gamma contrast value increases, output midtones become lighter.

The graph under the scroll bar for gamma contrast adjustment (only available in some dialogs) shows how input intensities are mapped to output intensities. The horizontal axis represents input intensities which increase from left to right. The vertical axis represents output intensities which increase from bottom to top.

Using the Windows 95/98 driver

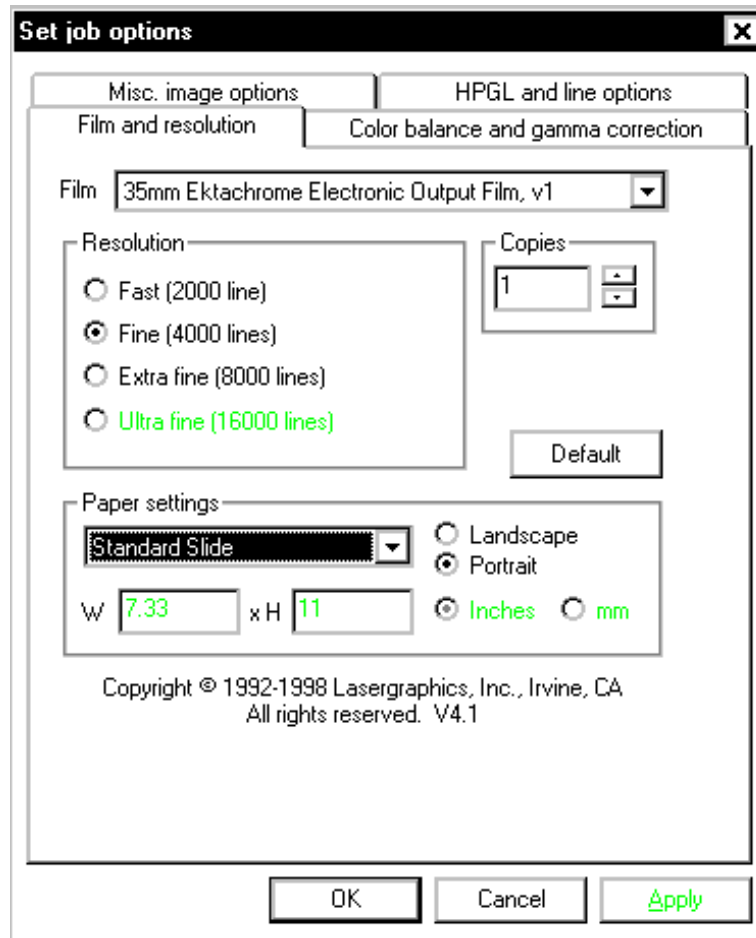
Printing a document or image to a film recorder from an application is just like printing to any ordinary printer. This process will vary slightly from application to application, but generally the Print command in the application's File menu will do the trick.

Printer settings in Windows 95/98

The printer driver allows changing a number of print settings. Most of these settings don't need to be changed in many cases, but you will always need to select the film type you want to use. The **Print** dialog generally has a button that allows you to access the printer settings dialog.

Please see "Printer Settings" on page 35 for details on individual settings.

This is the printer settings dialog in Windows 95.



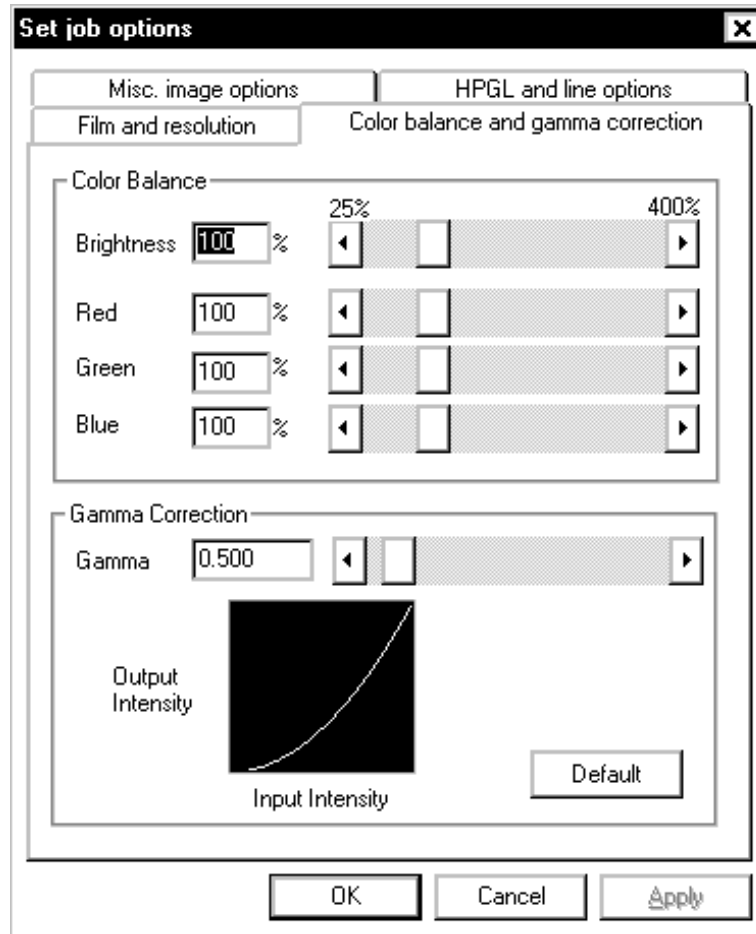
- Choose the desired resolution in the **Resolution** box. Note that not all film recorders and film types support all resolutions. Up to four different resolutions are available:
 - 2k – Fastest selection – up to 2048 x 1680 pixels
 - 4k – Fine resolution – up to 4096 x 3360 pixels
 - 8k – Extra fine resolution – up to 8192 x 6719 pixels
 - 16k – Ultra fine resolution – up to 16384 x 13438 pixels

Note that the higher the resolution, the longer it will take to print the image on the film recorder. As a rule of thumb, 2k images will take at least 30 seconds, 4k images will take at least 40 seconds, 8k images will take at least 150 seconds and 16k images will take at least 600 seconds. The exact times will vary with the complexity of the image, the speed of the interface, the film type and the type of film recorder used.

42 Reference

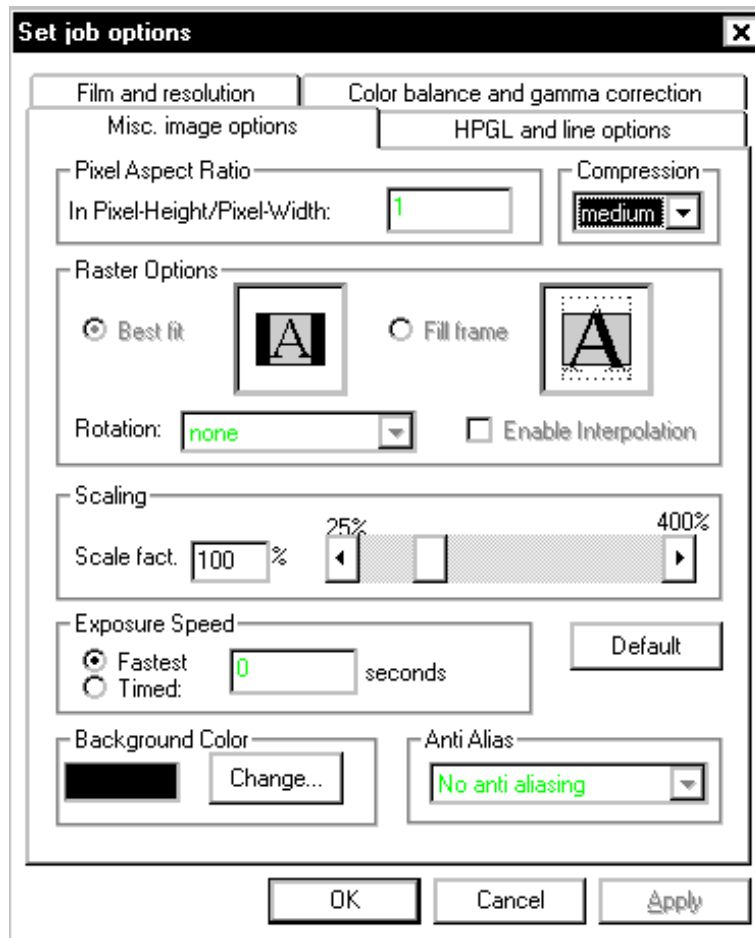
- **Orientation** selects the image orientation.
- **Output Size** selects the “paper” format to use. This should match the paper format selected in your application. You will generally get best results with the default “Standard Slide”. You can also select a user defined paper size
- **NOTE:** Make sure to match the paper size and orientation settings of the printer driver with those of your application. Some applications will ignore paper dimensions returned by the printer driver. Paper size and orientation mismatches can lead to badly sized images.
- **Film** selects the film to use.

Color balance and gamma correction



- **Color Balance** controls the brightness of the three color channels.
- **Gamma Correction** controls the gamma correction. It is used to brighten or darken mid tones of an image without changing the very dark and very bright pixels.

Miscellaneous options



- **Compression** selects a compression type for the BLL. Medium compression optimizes for speed, while high compression optimizes for file size. Use **high** compression when you want to send BLLs to a service provider using removable media or the Internet.
- **Scale** scales your image. The range is 25% to 400%. Note that scaling your image may result in non-optimal use of film.
- **Minimum Exposure Time** is used to lengthen the imaging time in rare cases of slice marking.

Using the Windows 95/98 Driver 45

- **Background Color** selects the color that is used to paint the background. This color is used in cases where the application does not specify a background color and when the aspect ratio of the paper selected in the application doesn't match the aspect ratio of the film.

The options Aspect Ratio, Raster Options and AntiAlias don't apply for non-raster operations.

Changing the Default Printer Settings in Windows 95/98

The document default printer settings are used automatically when an application initializes the printer settings of a document, usually when a document is created and when the selected printer is changed. By setting the document defaults to the settings you normally use, you can simplify using the printer driver.

You can find the default document settings by:

Selecting Start->Settings->Printers

right-clicking on the film recorder

selecting 'Properties'-'>'Details'-'>'Setup'

The default document settings dialog is the same as the printer settings dialog described in "Printer settings in Windows 95/98" on page 41.

Using the Windows NT driver

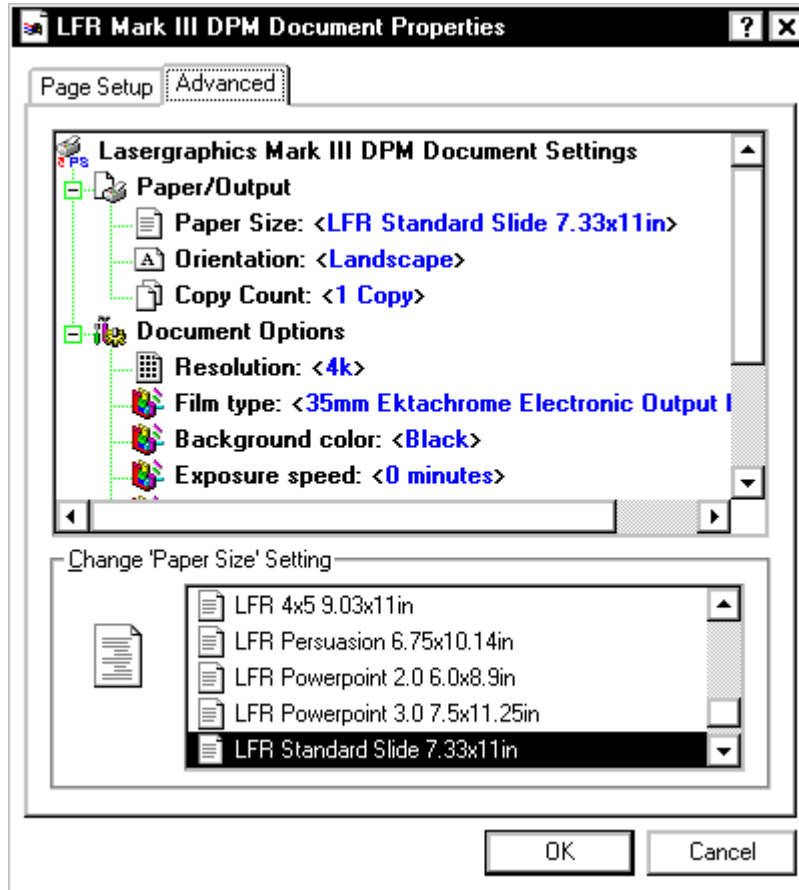
Printer settings in Windows NT

Printing a document or image to a film recorder from an application is just like printing to any ordinary printer. This process will vary slightly from application to application, but generally the Print command in the application's File menu will do the trick.

The printer driver allows changing a number of print settings. Most of these settings don't need to be changed in many cases, but you will always need to select the film type you want to use. The 'Print' dialog generally has a button that allows you to access the printer settings dialog.

Please see "Printer Settings" on page 35 for details on individual settings.

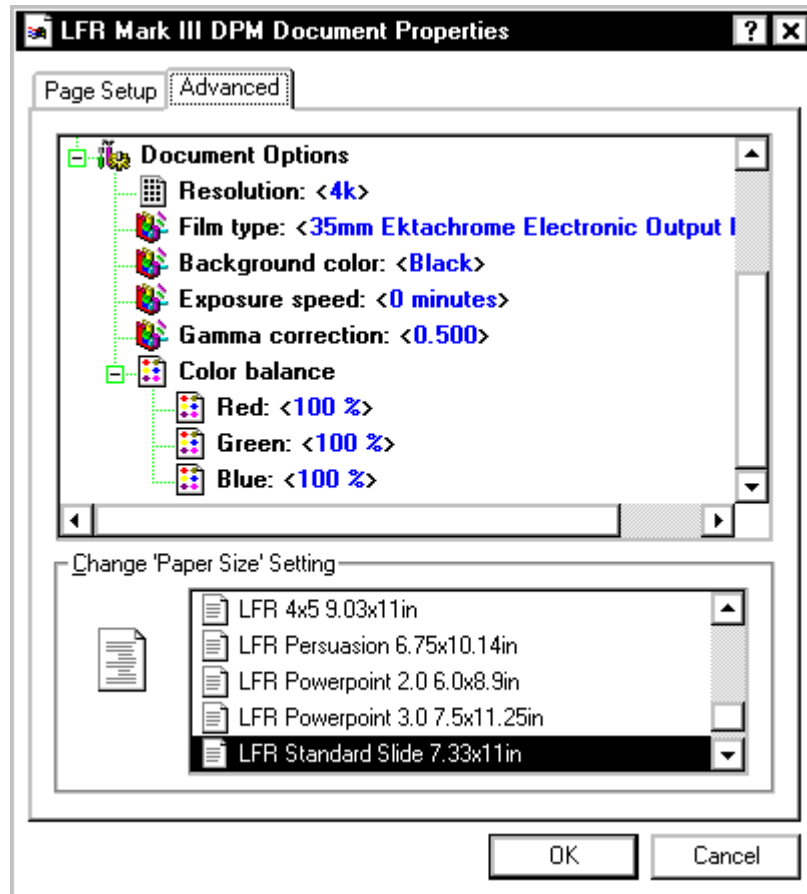
The printer settings dialog looks like this:



- **Selecting Paper Size:** Select 'Paper Size' in the upper window, then choose a form in the lower window. Default is 'LFR Standard Slide 7.33x11in'.
- **Selecting Orientation:** Select 'Orientation' in the upper window, then choose 'Portrait' or 'Landscape' in the lower window. The driver will rotate the rasterized image to fit the form on the film using as much film as possible. Default is 'Portrait'.
- **Selecting Copy Count:** Select 'Copy Count' in the upper window, then choose the number of copies in the lower window. Default is 1.
- **Selecting Resolution:** Select 'Resolution' in the upper window, then choose 2k, 4k, 8k or 16k in the lower window. Note that not all film recorders support all resolutions. Default is 4k.

Using the Windows NT Driver 49

- **Selecting Background Color:** Select 'Background Color' in the upper window, then choose 'black' or 'white'. The background color determines the color imaged on film for areas that the application decides not to rasterize on. The background color is also applied to areas that are not imaged by the application due to the fit of the form on the film. Options are black and white. Default is black. Select 'White' for text applications like Word that expect white paper.
- **Selecting Exposure Speed:** Select 'Exposure Speed' in the upper window, then choose a minimum exposure time in minutes. This setting selects the minimum time for the exposure. It is used to slow down the film recorder in rare cases of banding. Default is 0 for maximum speed.



- **Selecting Gamma Correction:** Select 'Gamma Correction' in the upper window, then choose a gamma value between 0.144 and 7. Default is 0.500.
- **Selecting Color Balance:** Select 'Red', 'Green' or 'Blue' in the upper window, then set a balance value between 25 and 400. Default is 100 for red, green and blue.
- **Compression** selects a compression type for the BLL. **Medium** compression optimizes for speed, while high compression optimizes for file size. Use **high** compression when you want to send BLLs to a service provider using removable media or the Internet.

Storing Changed Settings

Press **OK** to store changed settings. 'Cancel' will undo all changes.

Changing the Default Printer Settings in Windows NT

The default document settings are used automatically when an application initializes the printer settings of a document, usually when a document is created and when the selected printer is changed. By setting the document defaults to the settings you normally use, you can make your life easier.

You can find the default document settings by:

Selecting Start->Settings->Printers

right-clicking on the film recorder

selecting 'Document Defaults...'

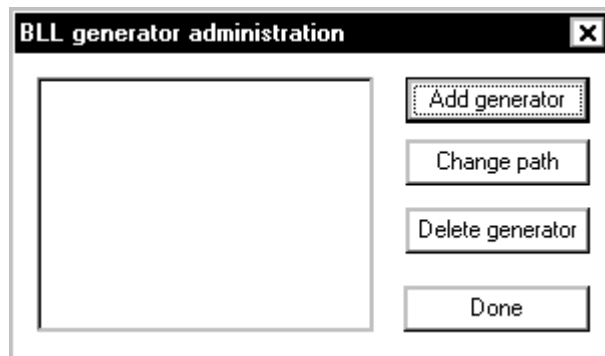
The default document settings dialog is the same as the printer settings dialog described in "Printer settings in Windows NT" on page 48.

Please see "Printer Settings" on page 35 for details on individual settings.

Managing BLL-Generators

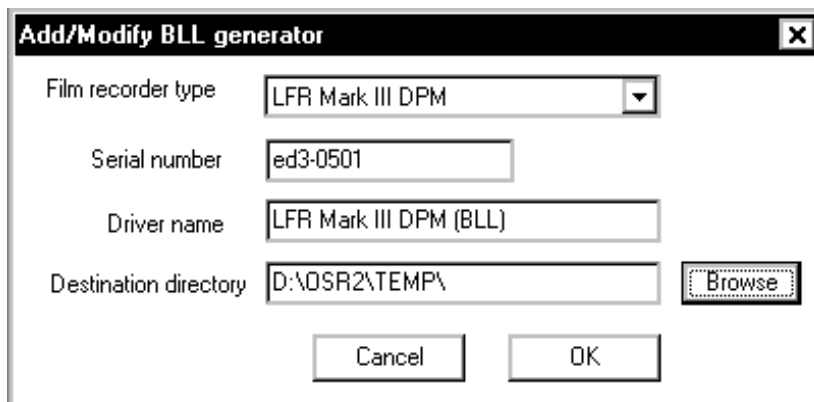
Open the BLL management dialog by selecting **Start->WinRascol32->BLLConf** and pressing **Add/Manage BLL Generators**. The dialog looks like this:

This is the dialog:



Adding a BLL-Generator

- Select **Add generator**. The following dialog is displayed:



- Select the destination film recorder type in **Film recorder type**.
- Enter the serial number of your film recorder in the **Serial number** edit box.
- You can modify the name of the printer driver in the edit box **Driver name**. Windows BLL Generator will select a default name for you.
- Select the Destination directory in which the BLL files will be placed. Windows BLL Generator will select the default temporary file path as default. You should select the network path of a WinRascol drop box if you intend to use a film recorder that is connected to your network.

- Press **OK** to create the BLL driver.

The BLL driver will now appear in the **BLL-generator Administration** dialog.

Changing Destination Path

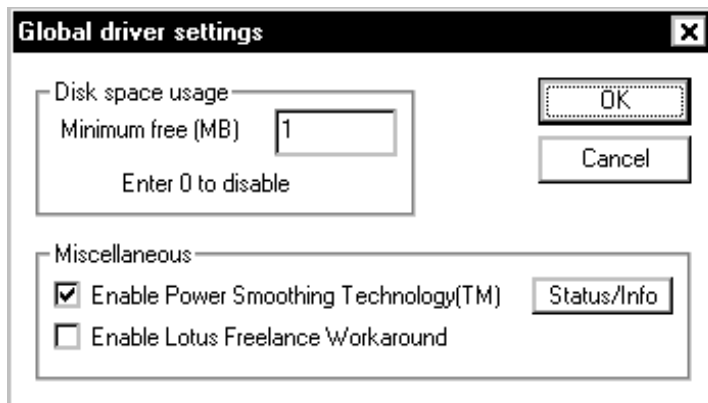
Select **Change Path** in the BLL-generator administration dialog. A dialog will appear to allow you to change the destination path. The destination path points to the directory in which generated BLLs are placed.

Deleting a BLL-Generator

Select a BLL driver in the BLL-generator Administration dialog by clicking on it. Press **Delete generator**. The BLL-generator will be deleted.

Modifying Driver Options

Open the Global driver settings dialog by selecting **Start->WinRascal32->BLLConf** and pressing **Configure Drivers**. The dialog looks like this:



- **Disk space usage** sets the amount of free disk space the driver leaves minimally before reporting **Disk Full**.
- **Enable Power Smoothing Technology:** This option enables a post processing feature that attempts to correct a gradient fill problem of PowerPoint 97. Gradient fills printed from PowerPoint 97 have very coarse steps and exhibit visible banding on high quality film recorders. This option interpolates between bands to ease the effect.
- **Enable Lotus Freelance Workaround:** This switch enables a workaround for a bug in Lotus Freelance 97. Freelance 97 will preview and print in black and white on true color printers. Enabling this switch hides the fact that Lasergraphics film recorders are true color devices from applications.
 - **Note:** Enabling this switch may affect printing from other applications adversely.
 - **Note:** Lotus will try to fix this problem in future releases.

Chapter 7: Uninstalling

When to use the Uninstaller

The uninstaller is used to remove all components of the Windows BLL Generator from your computer. You will want to do this when

- You do not intend to use Windows BLL Generator on your computer any longer.
- The Windows BLL Generator installation has been corrupted. While you can reinstall Windows BLL Generator over a corrupted installation of Windows BLL Generator, this is not recommended.

You do not need to uninstall Windows BLL Generator when

- You want to install an update of Windows BLL Generator.
- You have used a Windows BLL Generator and now want to attach a film recorder directly.
- You have used a film recorder directly using WinRascal but want to install a BLL-generator.

When to use the Uninstaller 57

How to use the Uninstaller

You can uninstall the Windows BLL Generator package by selecting **Uninstall** in the **WinRascal32** program group. Uninstall will do the following:

- Remove all Windows BLL Generator printer drivers
 - Remove all Windows BLL Generator system drivers (NT only)
 - Remove all Windows BLL Generator program and data files
 - Remove all Windows BLL Generator related entries in the WIN.INI
 - Remove all Windows BLL Generator entries in program groups (Startup and WinRascal32)
- **NOTE:** It is best to run **Uninstall** after rebooting the computer and exiting all programs. Some programs tend to leave printer drivers activated. Uninstall will fail in this case.

Chapter 8: Tips and Tricks

This section gives tips and tricks on particular image types and applications.

Specific Applications

Adobe Type Manager (ATM)

Windows BLL Generator is fully compatible with **Adobe Type Manager (ATM)** fonts, version 1.15 or newer. These fonts produce smooth text at any size and match text layout in your output with your image on screen.

In ATM Control Panel, make sure the **Print ATM fonts as graphics** option is checked; otherwise, very large ATM text may be missing in your output.

Arts & Letters

The long names of Windows BLL Generator devices may cause problems with Arts & Letters. To get around the problems, you can shorten the Windows BLL Generator device names:

1. Open **Start->Settings->Printers**
2. Select the Windows BLL Generator printer
3. Use **File->Rename** to shorten the name of the printer

Corel Draw

In order to get a realistic preview of the document, be sure that the color selected as the **Paper Color** in CorelDRAW's **Page Setup** window matches with the **Background Color** in Windows BLL Generator Driver's setup window. For example, when printing to the film recorder, Windows BLL Generator's default background color is black. Set Paper Color in CorelDRAW's Page Setup window to black, so that the preview of the image in CorelDRAW will be correct.

If you are using CorelDRAW 3.00 Rev B or later, adding the following entry to the **[CDrawConfig]** section of the **CORELDRW.INI** file will significantly improve the printing times of certain images:

```
UseClippingForFills=0
```

In the Print window of CorelDRAW, make sure the **Print to File** box is **not** checked.

Corel Draw 7

When using gradient fills in Corel Draw 7, make sure to select the highest number of steps at every opportunity to avoid banding. Especially in the dialog hidden under **Print->Options->Options**.

Also make sure to disable color management for composite print under **Tools->Color Manager**. This will prevent the very strange discoloration caused by the default profile.

60 Tips and Tricks

CoreIDRAW 8

CoreIDRAW 8 will generate erroneous output when you choose a value higher than 256 for the number of fountain steps in the miscellaneous printer options. CoreIDRAW 8 will even crash while printing gradient fills if the number is very high, like 2000.

Freelance Graphics for Windows Ver 1.0

If the text and/or objects on your slides are printed with a different color than those on your screen, do the following:

1. In the **Page Setup** window of Freelance, click on **Color Map**.
2. Select **Use Window's color map**.

All bitmaps will appear in black and white when printed with Windows BLL Generator. This problem is fixed in Freelance Graphics for Windows ver 2.0.

Freelance Graphics 97

Freelance Graphics 97 has a bug that makes it preview and print in black and white to true color devices like Lasergraphics film recorders. Please enable the **Lotus Freelance Workaround** outlined in "Modifying Driver Options" on page 55 if you experience this problem.

Persuasion

To make Persuasion print faster to Windows BLL Generator, you can modify the **ALDUS.INI** file. (The **ALDUS.INI** file is usually located in the USENGLSH subdirectory under your ALDUS directory.) Use a text editor (such as **EDIT.COM** from MS-DOS or **NotePad** from Windows) to add the following lines to the end of the **ALDUS.INI** file:

```
[your_Windows BLL Generator_printer_name]  
NoPatternOnlySolidFill=0  
ROptype=0  
StretchImage=0
```

where *your_Windows BLL Generator_printer_name* is the name of the *Windows BLL Generator* printer as shown in the Installed Printer List of the **Control Panel**. For example, if you have an LFR, the lines you should add are:

```
[LFR]
NoPatternOnlySolidFill=0
ROptype=0
StretchImage=0
```

If you have a *Personal* LFR, the lines you should add are:

```
[Personal LFR]
NoPatternOnlySolidFill=0
ROptype=0
StretchImage=0
```

After you have changed the **ALDUS.INI** file, restart Windows.

- **CAUTION:** Please make sure the lines you are adding follow **exactly** the format described here. A spelling mistake or an extra space may cause Persuasion to ignore these lines with no warning.

PhotoStyler

You must check the **Halftone by Printer** box in PhotoStyler's **Page Setup** window. Otherwise, PhotoStyler will limit the bitmaps to 16 colors when printing to Windows BLL Generator Driver.

If you choose **Scale to Fit** in the PhotoStyler's **Print** window, PhotoStyler will resample bitmaps to the film recorder's resolution instead of letting Windows BLL Generator do the work. This will make Windows BLL Generator print job files very large and make the processing very slow.

Word, Write

These applications assume a white background and always print text in black. So, when printing to the film recorder, you must explicitly select a white **Background** in Windows BLL Generator Driver's setup window. Otherwise, you will get black text printed on a black background.

Appendix A: Specifications

Specifications are subject to change without notice.

Supported PCs Any IBM PC compatible with a 486 processor or better and at least 16 MB of memory. Note that this represents the absolute minimum. You will need more memory if you intend to use Windows NT or have graphics intensive images.

Supported Output Devices All film recorders in the Lasergraphics LFR family are supported:

- Personal LFR
- Personal LFR PLUS
- LFR-X
- LFR Mark II
- LFR Mark II - Digital Photography Model (DPM)
- LFR Mark III
- LFR Mark III - Digital Photography Model (DPM)
- LFR Mark V - Digital Photography Model (DPM)
- LFR Mark VI - Digital Photography Model (DPM)

Supported Operating Environment	Windows 95, Windows 98, Windows NT 4.0 and Windows NT 5.0
Image Enhancements	Color balance Gamma contrast
Fonts	TrueType ATM (Adobe Type Manager) ver 1.5 or later
Software Selectable Resolution (Film Recorder)	4000 lines (4096 x 2730 pixels) 2000 lines (2048 x 1366 pixels) On LFR <i>Mark III</i> , LFR <i>Mark III</i> - Digital Photography Model, LFR <i>Mark III</i> – Digital Photography Model and LFR Mark V – Digital Photography model 8000 lines (8192 x 5461 pixels) are available. On the LFR Mark VI – Digital Photography Model 16000 lines are available
Film Types	Ektachrome 100 color slides Kodacolor 100 color prints Other ISO 100 films Polachrome instant slides Polaroid 339 Print instant prints (with optional Polaroid camera) Polaroid 669 Print instant prints (with optional Polaroid camera) Polaroid 691 instant transparencies (with optional Polaroid camera) Ektachrome 100 4x5 transparencies (with optional 4x5 camera) Ektachrome 100 Color Reversal 120/220 film (with optional 120 camera) Lasergraphics Film Calibration (LFC) files, currently 176 film type and film recorder combinations

Output Problems 65

Glossary

antialiasing Assigning pixels at the edges of objects a graduated gray scale of values. This dramatically reduces the appearance of jaggies.

Binary Lasergraphics Language (BLL) A proprietary print job format.

bitmap A type of graphic composed of a rectangular group of colored dots. Bitmaps have jagged edges when output at high-resolution.

BLL An abbreviation for Binary Lasergraphics Language.

camera back A film recorder's camera.

client computer A computer without a film recorder. Users on client computers can put image files in **dropboxes** so that the WinRascol **server PC** can pick up the image files and print them.

contrast Measures the range of shades between light and dark. Black and white is high contrast, whereas two similar shades of gray is low contrast.

crop To trim an image prior to output.

DPI Dots per inch. Commonly used to specify printer resolution.

DPM Digital Photography Model. A film recorder model that is customized for digital photography.

Dropbox A shared directory where network users can put image files. A dropbox directory is scanned by WinRascol periodically for image files to process. Dropboxes make film recorder sharing very easy.

font A typeface.

HPGL A popular computer-aided design drawing format on PCs.

jaggies Within an image, steps along the edge of a shape that should be smooth. Jaggies are reduced by increasing **resolution** and/or **antialiasing**.

landscape An output orientation where the width is greater than the height. Also known as horizontal or wide format. Compare to **portrait**.

Lasergraphics Language A powerful graphics language that is common in the mainframe and minicomputer environments.

Lasergraphics Film Calibration file A file that provides calibration data of a film type for a specific LFR model. Therefore, the LFC file of 35mm Vericolor for LFR *Mark III* is different from the one for LFR *Mark III* - Digital Photography Model.

LFC file See Lasergraphics Film Calibration file.

LFR Lasergraphics Film Recorder. Refers to a family of film recorders including the LFR, LFR PLUS, *Personal LFR*, *Personal LFR PLUS*, LFR-X, LFR *Mark II and LFR Mark III*, and the Digital Photography Models Mark II DPM, Mark III DPM, Mark V DPM and Mark VI DPM.

LL An abbreviation for Lasergraphics Language.

object A type of graphic composed of graphic primitives (e.g. circles, lines, polygons, etc.). The graphic primitives are represented by their mathematical coordinates. Objects reproduce well at high-resolution.

output To create an image on a film recorder.

pixel An acronym for picture element. A pixel is a single dot on your monitor or output device.

portrait An output orientation where the height is greater than the width. Also known as vertical or tall format. Compare to **landscape**.

printer driver Software that knows how to communicate with a printer device.

queue A directory on your hard disk for storing temporary Windows BLL Generator print job files.

Rascal Refers to a family of high speed Lasergraphics image processors. Instead of burdening the PC, WinRascal lets the Rascal perform the time- and memory-consuming task of rasterization. This way you can continue to do work on your PC while the Rascal is busy rasterizing. The Rascols also control the Lasergraphics film recorders. These days PCs have become so fast that they usually rasterize faster than Rascal devices.

Rascal II A Rascal model that plugs into your PC and acts as a fully independent co-processor that performs rasterization and controls the film recorder.

Rascal IV A Rascal model that plugs into your PS/2 and acts as a fully independent co-processor that performs rasterization and controls the film recorder.

RascalPort A high performance communication port for connecting to RISC Rascal and Internal Rascal. It can emulate the standard bi-directional parallel (LPT) port to work with most third party printers.

raster See bitmap.

rasterization A time- and memory- consuming process for converting graphics objects into rasters for output.

resolution The total number of dots in an image. Film recorder resolutions measured in lines represents the number of dots across the image.

RISCRascol A Rascol model that offers dramatic speed increase for the Lasergraphics film recorders. For complex images, the RISCRascol is 15 times faster than the Rascol II/IV.

server PC A PC connected to a film recorder . The PC can run WinRascol Network Version to share the film recorder with other network users via **dropboxes**.

TARGA A popular bitmap file format for PCs.

TIFF A popular bitmap file format for PCs.

Index

- 24-bit color, 14
- 35mm prints, 13
- 35mm slides, 13
- Adobe Type Manager, 33, 60
- Application
 - Printing from, 22
- applications
 - draw, 33
 - illustration, 33
 - paint, 33
- Arts & Letters, 34, 60
- ATM, 33, 60
- auto deletion, 28
- Background Color, 39, 50
- Bitmap, 33
- BLL-generator
 - Add, 53
 - Adding, 19
 - Change path, 54
 - Delete, 54
 - Manage, 53
- Canvas, 34
- Charisma, 34
- Client Computers
 - printing on, 27
- Color
 - Background, 39, 50
 - fidelity, 32
 - true-color, 14
- Color Balance, 39, 44, 51
- Contrast
 - Gamma, 40, 44
- Copy count, 49
- CorelDRAW, 34, 60
- Designer, 34
- dropbox, 28
- Excel, 34
- Exposure Speed, 50
- Exposure Time, 39, 45
- Film
 - LFC based', 38
 - Non LFC based, 37
- film transparencies, 13
- Film Type, 37, 43
 - Ektachrome 100 (120/220), 38
 - Ektachrome 100 (4x5), 38
 - Kodacolor 100, 38
 - Lasergraphics Film Calibration files, 38

- LFC files, 38
- Polachrome, 37
- Polaroid 339, 37
- Polaroid 669, 37
- Polaroid 691, 37
- Film Types, 64
- font
 - ATM, 33, 60
- Freelance, 34, 61
- Freelance Graphics for Windows, 61
- Gamma, 51
 - Contrast, 44
- Guided tour, 21
- Hardware
 - Required, 10
- Harvard Graphics, 34
- Lasergraphics Film Calibration files, 37, 38
- LFC files, 37, 38
- LFR, 13
- Microsoft Word, 62
- objects, 33
- Orientation, 36, 43, 49
- Output Size, 36, 43
- PageMaker, 34
- Paper Size, 36, 43, 49
- Persuasion, 34, 61
- Photoshop, 34
- PhotoStyler, 34, 62
- Polaroid prints, 13
- PowerPoint, 34
- Printer Driver, 27
 - Windows 95/98, 41
 - Windows NT, 48
- Printing
 - From application, 22
- Reference, 35
- Resolution, 35, 42, 49
 - defined, 31
 - image resolution, 13
- Scaling, 39, 45
- Server PC
 - printing on, 27
- Settings, 35
 - Default, 47, 52
 - Windows 95/98, 41
 - Windows NT, 48
- Setup, 18
- slice marks, 39
- slide
 - 2000-line, 32
 - 4000-line, 32
 - 8000-line, 32
- Specifications, 63
- text
 - bitmap, 33
 - object, 33
- Uninstalling WinRascol, 57
- What's new, 12
- Windows 3.1x, 12
- WinRascol
 - About, 13
 - Installation, 17
 - Version 3.15, 12
 - What's new, 12
- WinRascol Driver
 - Lasergraphics Film Calibration files, 38
 - LFC files, 38
- WinRascol32, 27
 - Installation, 18
- Word, 62

Free Manuals Download Website

<http://myh66.com>

<http://usermanuals.us>

<http://www.somanuals.com>

<http://www.4manuals.cc>

<http://www.manual-lib.com>

<http://www.404manual.com>

<http://www.luxmanual.com>

<http://aubethermostatmanual.com>

Golf course search by state

<http://golfingnear.com>

Email search by domain

<http://emailbydomain.com>

Auto manuals search

<http://auto.somanuals.com>

TV manuals search

<http://tv.somanuals.com>