

LSi SERIES LOUDSPEAKERS

LOUDSPEAKERS FOR SERIOUS LISTENERS



SERIES | CATALOG

**polk**audio®

**LSi25**

Side-firing 10" powered subwoofer in each mirrored array enclosure make the LSi25 a full range loudspeaker capable of filling large rooms with deep, high definition bass and dynamic, detailed sound. If you crave tonal accuracy, detail and three-dimensional imaging, and the dynamic range and bass impact of a floorstanding speaker, you owe it to your ears to hear the LSi25. Rediscover your love of music!

- Designed for high definition formats such as SACD and DVD Audio.
- Built-in 10" powered subwoofer in each speaker for true full-range performance.
- Two 5 1/4" drivers with aerated polypropylene cones for wide response and low distortion.
- Ultra high resolution Ring Radiator tweeters for superior detail and transparency.

**FLOORSTANDING SPEAKER WITH BUILT-IN POWERED SUBWOOFER**

150W CONTINUOUS AVERAGE OUTPUT PER CHANNEL

OVERALL DIMENSIONS:  
 49 3/4" H X 8 5/8" W X 17" D  
 (126.36CM H X 21.91CM W X 43.18CM D)  
 OVERALL FREQUENCY RESPONSE 20HZ - 27KHZ.  
 LSi25 AVAILABLE IN 110 VOLT ONLY.

SEE SPECIFICATIONS FOR MORE DETAILED PRODUCT INFORMATION.



CHERRY EBONY

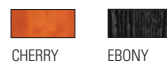
**LSi15**

Make the remarkable LSi15 the heart and soul of your high performance stereo or multi-channel sound system. It features all the extraordinary technologies found in the LSi25 model, in a slightly smaller enclosure with an 8" non-powered side-firing woofer.

- Mirror-imaged pairs for tightly focused highs and true three-dimensional imaging.
- 8" woofer for full-range performance from all sources.
- Two 5 1/4" drivers with Aerated Polypropylene Cones for wide response and low distortion.
- Ultra high resolution Ring Radiator tweeters for superior detail and transparency.

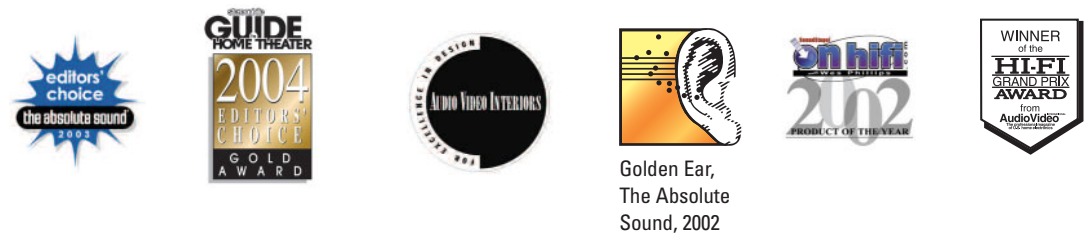
OVERALL DIMENSIONS:  
 45 1/2" H X 8 5/8" W X 13" D  
 (115.57CM H X 21.91CM W X 33.02CM D)  
 OVERALL FREQUENCY RESPONSE 22HZ - 27KHZ.

SEE SPECIFICATIONS FOR MORE DETAILED PRODUCT INFORMATION.



CHERRY EBONY

**LSi HONORS**



Golden Ear,  
 The Absolute  
 Sound, 2002



**ANTI-RESONANT ENCLOSURE**

Cabinet resonance can ruin the sound of an otherwise well-designed speaker. You don't want to hear your speaker cabinets humming along with the music (they don't even know the words), you want to hear the uncolored sound launched by the drivers and tweeters. We take special pains to make sure that Polk speaker cabinets are resonance-free. All wood cabinet Polk Audio loudspeakers are constructed of costly low-resonance MDF instead of the cheaper and more resonant particle board used by many competitive speaker brands. LSi models feature additional anti-resonance strategies such as asymmetric braces and resonance-damping side panels (for 1 1/2" total cabinet thickness). See more about Anti-Resonant Enclosure at: [www.polkaudio.com/catalog/technology/](http://www.polkaudio.com/catalog/technology/).



---

"I am a little stunned by the Polk LSi15...  
outstanding accuracy, detail and nuance..."

---

The Absolute Sound,  
April/May 2002

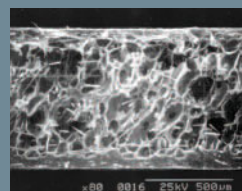


LSi25

LSi15

#### AERATED POLYPROPYLENE CONE

Polk Audio LSi Series Loudspeakers feature ultra stiff, well damped, surprisingly lightweight Aerated Polypropylene Cones. They're 20% lighter than conventional poly and 35% lighter than aluminum cones. Dynamic Balance composite materials tune out driver resonance and foamed air pockets add damping without adding mass. These cones deliver spectacular midrange clarity, punchy bass and high efficiency. See more about Aerated Polypropylene Cones at [www.polkaudio.com/catalog/technology/](http://www.polkaudio.com/catalog/technology/).



Scanning electron microscope  
image of Aerated Poly Cone  
showing air pockets.

polk  
technology

**LSi9**

With the performance characteristics of a premier floorstanding loudspeaker, the LSi9 will deliver the best bookshelf performance possible. Astounding detail, excellent accuracy and dynamic range (with rear-firing PowerPort® for deep bass response), and flawless fit and finish make the LSi9 the choice for serious listeners with limited space.

- Superior musical accuracy, serious theatrical impact.
- Two 5 1/4" Dynamic Balance® drivers with Aerated Polypropylene Cones for wide response & low distortion.
- Cascade Tapered Crossover array ensures flat mid-range response, improved imaging focus, and depth.
- Acoustically inert side panels are 1 1/2" thick.

STANDS COURTESY OF SANUS SYSTEMS® (NOT INCLUDED WITH SPEAKER PURCHASE). AVAILABLE FOR SALE AT SHOPPOLKAUDIO.COM.

OVERALL DIMENSIONS:  
14 7/8" H X 8 5/8" W X 15 1/4" D (37.78CM H X 21.91CM W X 38.73CM D)  
OVERALL FREQUENCY RESPONSE 38HZ - 27KHZ.

SEE SPECIFICATIONS FOR MORE DETAILED PRODUCT INFORMATION.



CHERRY



EBONY

**LSi7**

Compact yet powerful, the LSi7 is engineered to deliver all of the lifelike detail, imaging and accuracy of the larger speakers in the LSi Series, sacrificing little to be the perfect speaker for audiophile systems in smaller rooms.

- 5 1/4" Dynamic Balance driver with Aerated Polypropylene Cone for wide response & low distortion.
- Cast aluminum driver baskets resist flexing & "ringing" for ultra-tight bass and coloration-free midrange.
- Ring Radiator tweeter for extended frequency response, superior detail and transparency.
- Rear-firing PowerPort for precise deep bass.

STANDS COURTESY OF SANUS SYSTEMS® (NOT INCLUDED WITH SPEAKER PURCHASE). AVAILABLE FOR SALE AT SHOPPOLKAUDIO.COM.

OVERALL DIMENSIONS:  
13 5/8" H X 8 5/8" W X 10 1/4" D (34.61CM H X 21.91CM W X 26.04CM D)  
OVERALL FREQUENCY RESPONSE 45HZ - 27KHZ.

SEE SPECIFICATIONS FOR MORE DETAILED PRODUCT INFORMATION.



CHERRY

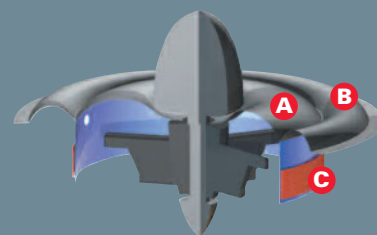


EBONY

polk  
technology

**RING RADIATOR TWEETER**

The Ring Radiator Tweeter, usually found only in speakers costing thousands more than Polk speakers, gives the LSi Series its incredible accuracy and astonishing detail, to reveal the nuances of your favorite CDs, high definition discs and LPs. The ultra-light woven ring radiator diaphragm is supported at two hinge points (A & B) and is driven by a centrally positioned voice coil (C). With a higher ratio of supported material than conventional tweeters, there's less opportunity for performance-robbing resonance to develop. This remarkable tweeter delivers accurate high frequencies with precise detail and wide dispersion. See more about The Ring Radiator at [www.polkaudio.com/catalog/technology/](http://www.polkaudio.com/catalog/technology/).



---

"[Polk has] hit the bull's-eye with the LSi9. Not only is it an exceedingly refined, first-class performer, it has specific sonic qualities that make it stand out in its price class."

---

SoundStage!.com,  
April 2002



LSi9

LSi7

#### ARC® PORT

A loudspeaker's internal standing wave resonance can impart a "thick" or "chesty" character to the sound of voices. Polk Audio's patented Acoustic Resonance Control Port System is tuned to cancel this resonance for utterly clear, accurate and natural midrange. See more about ARC Port at [www.polkaudio.com/catalog/technology/](http://www.polkaudio.com/catalog/technology/).



polk  
technology

**PSW1000**

The PSW1000 creates superb detail and musicality for truly big, tight, emotionally satisfying bass you can really feel. High roll surrounds allow longer cone excursion for louder, gut-kicking bass. Both drivers feature vented, four-layer, long-winding-height voice coils, vented pole pieces, and Aluminum Formers, ensuring better heat dissipation and less heat build-up for a long life of big bass. Both of the PSW1000's 10" Dynamic Balance drivers are magnetically shielded, so you can locate PSW1000 near video equipment with no risk of video picture distortion.

- Dual 10" (25cm) Dynamic Balance drivers have nearly 40% more surface area than a single 12" driver and a much greater force to mass ratio.
- Two Bass Venting Technologies—Slot Load Vent and PowerPort® combine to virtually eliminate port turbulence and noise.

- BASH Amplifier combines the fidelity of conventional Class A/B amplifiers with the efficiency of Class D amplifiers. You get high power, cool, reliable operation with precise definition and low distortion.
- Multiple connection options, including filtered line ins & outs, speaker level ins & outs, adjustable-filtered Line In and unfiltered LFE give you unprecedented hookup flexibility and more control.
- Heavy duty MDF cabinet with 1 3/4" (4.5cm) side panels and rigid internal bracing control vibration for near-zero cabinet resonance.

OVERALL DIMENSIONS:  
16 3/4" H X 16 7/8" W X 19 3/8" D  
(42.55CM H X 42.86CM W X 49.21CM D )

SEE SPECIFICATIONS FOR MORE DETAILED PRODUCT INFORMATION.



CHERRY



EBONY

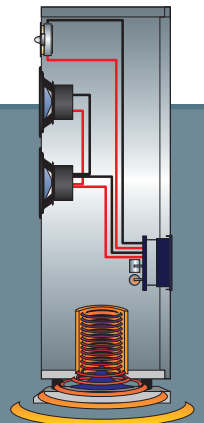


PSW1000

polk  
technology

**POWERPORT®**

Polk Audio loudspeakers shatter the boundaries of bass response with patented PowerPort bass venting technology. Conventional ports have limitations: air turbulence at the mouth of the port can cause "port noise" and bass output losses of up to 3dB. (A loss of 3dB means that half of your amplifier power is being wasted on turbulence instead of bass!) The distinctive design of the Polk Audio PowerPort gradually slows air exiting the port, vastly reducing turbulence, port noise and energy loss. The result is bass that you will feel as well as hear; bass that reaches out, grabs you by the lapels and shakes you up—for a completely visceral and emotional movie and music experience. See more about Power Port at [www.polkaudio.com/catalog/technology/](http://www.polkaudio.com/catalog/technology/).





**LSiF/x®**

This state-of-the-art bi-directional surround speaker delivers effects so real they will astonish you. Engineered to match the ultra-high performance of an LSi Series multi-channel system, the LSiF/x uses the identical 5 1/4" drivers and Ring Radiator tweeters as the rest of the LSi Series, for seamless integration into your high-end surround system.

- Designed for high definition multi-channel formats like DVD, SACD, DVD-Audio, Dolby Digital and DTS.
- Triangular cabinets produce a more realistically diffuse wavefront and lifelike image of surround sound F/x.
- Switchable Bipole/Dipole for placement flexibility.
- Rear-firing PowerPorts double as wall mounting brackets; extend bass response for optimum performance in discrete channel systems.

## OVERALL DIMENSIONS:

15" H X 13 1/4" W X 10" D (38.10CM H X 33.66CM W X 25.40CM D)

OVERALL FREQUENCY RESPONSE 40HZ - 27KHZ.

SEE SPECIFICATIONS FOR MORE DETAILED PRODUCT INFORMATION.



BLACK

**LSiC**

Specially engineered to match the premium components used in the ultra-high performance LSi Series Loudspeakers, the LSiC ensures absolutely seamless, lifelike imaging across the front stage of your LSi Series multi-channel system. Superior Cascade Tapered Array Technology, featuring the awesome Ring Radiator tweeter, puts everyone in the front row, no matter where they're sitting.

- Superior accuracy and theatrical impact for the most sophisticated multi-channel systems.
- (2) 5 1/4" drivers with Aerated Polypropylene Cones for wide response and low distortion.
- Timbre-matched with the LSi Series, for a seamless realistic surround sound experience.
- Dual rear-firing PowerPorts for surprising center channel bass response.
- Patented Acoustic Resonance Control ARC® Port System cancels standing wave resonance for clear, accurate midrange.

## OVERALL DIMENSIONS:

7" H X 21 3/4" W X 9" D (17.78CM H X 55.24CM W X 22.86CM D)

OVERALL FREQUENCY RESPONSE 40HZ - 27KHZ.

SEE SPECIFICATIONS FOR MORE DETAILED PRODUCT INFORMATION.



BLACK



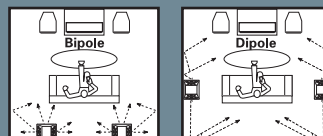
LSiF/x



LSiC

**BIPOLE/DIPOLE SWITCH**

Use the Bipole/Dipole Sound Customization Technology of Polk Audio Bi-Directional Surround Speakers to optimize your surround soundstage according to your theater setup and seating layout. Use the Dipole setting for a more diffuse, enveloping rear effects soundstage. Use the Bipole setting to provide a more localized soundfield in discrete channel systems. Polk Audio Bi-Directional Surround Speakers give you the choice of either polar pattern so you can choose the one that sounds best to you in your set-up. Simply flip the convenient switch! See more about Bipole/Dipole at [www.polkaudio.com/catalog/technology/](http://www.polkaudio.com/catalog/technology/).



polk  
technology

**LS/15 SYSTEM**

Here, the LS/15 floorstanding loudspeakers are perfectly matched to the LS/c center channel speaker, LS/f/x Bi-directional surround speakers and the Polk Audio PSW1000 Powered Subwoofer. This is a multi-channel music and home theater system of unusual power and precision for audiophile systems in mid- to large-sized rooms.

LS/15 SHOWN WITH CHERRY VENEER SIDE PANELS.  
EBONY VENEER SIDE PANELS ALSO AVAILABLE.

**MULTI-CHANNEL AUDIO SYSTEMS**

Front Speaker	Center	Surround	Subwoofer
LS/25	LS/c	LS/f/x or LS/9	PSW1000*
LS/15	LS/c	LS/f/x or LS/9	PSW1000
LS/9	LS/c	LS/f/x or LS/7	PSW1000
LS/7	LS/c	LS/7	PSW1000

\* THE LS/25 FEATURES BUILT-IN POWERED SUBWOOFERS; AN ADDITIONAL SUBWOOFER IS OPTIONAL BUT RECOMMENDED FOR LARGER ROOMS

SEE SPECIFICATIONS FOR MORE DETAILED PRODUCT INFORMATION.



LS/15 SYSTEM

polk  
technology

**CASCADE TAPERED ARRAY**

Place two drivers near each other and interference between the two drivers creates frequency response errors (called "comb filtering") for off-axis listeners; people sitting or standing off to the side of the room won't hear the same tonal balance as listeners who are "on-axis" right in the center of the listening area. Polk Audio multi-driver speakers combat this with "Cascade Tapered Array" crossovers. One driver is "crossed over" at a lower frequency than the other driver, filtering out the frequencies where the interference will occur (thereby eliminating interference effects). The Cascade Tapered Driver Arrays in Polk LS/c, LS/9, LS/15 and LS/25 speakers results in clearer, more detailed sound and uniform tonal balance throughout the room. The sound is consistently accurate whether the listener is standing or sitting, in-line or off-axis. See more about Cascade Tapered Driver Array at [www.Somanuals.com](http://www.Somanuals.com). All Manuals Search And Download.





## LSi7 SYSTEM

If sound quality in a smaller system is important to you, this LSi7 multi-channel system matches the LSi7 bookshelf loudspeakers (used as main and surround speakers in this setup) with the LSiC center channel speaker and the PSW1000 Powered Subwoofer. This system will deliver true audiophile performance and multi-channel excitement in small to mid-sized rooms.

LSI7 SHOWN WITH CHERRY VENEER SIDE PANELS. EBONY VENEER SIDE PANELS ALSO AVAILABLE. SEE SPECIFICATIONS FOR MORE DETAILED PRODUCT INFORMATION.

STANDS COURTESY OF SANIUS SYSTEMS® (NOT INCLUDED WITH SPEAKER PURCHASE). AVAILABLE FOR SALE AT SHOPPOLKAUDIO.COM.

---

"A real breakthrough in affordable high-end products."

---

The Absolute Sound,  
April/May 2002



LSi7 SYSTEM

FLOORSTANDING LOUDSPEAKERS	LSi25*	LSi15*
Driver Complement	1 - 10" (25.4cm) Dynamic Balance bass driver 2 - 5 1/4" (13.3cm) Dynamic Balance mid/bass drivers 1 - 1" (2.5cm) Dynamic Balance Ring Radiator tweeter	1 - 8" (20.3cm) Dynamic Balance bass driver 2 - 5 1/4" (13.3cm) Dynamic Balance mid/bass drivers 1 - 1" (2.5cm) Dynamic Balance Ring Radiator tweeter
Frequency Response: Overall / -3dB Limits	20Hz - 27kHz / 30Hz - 26kHz	22Hz - 27kHz / 30Hz - 26kHz
Impedance	compatible with 4 Ohms outputs	compatible with 4 Ohms outputs
Recommended Amplification	20 - 300 Watts / channel	20 - 250 Watts / channel
Efficiency	88dB	88dB
Amplifier Continuous Average Power**	150 Watts into 8 Ohms <1% THD, 30 - 200 Hz (per enclosure)	n/a
Subwoofer Amp Dynamic Power	300 Watts (per enclosure)	n/a
Available Finish	high gloss black, ebony or cherry veneer side panels	high gloss black, ebony or cherry veneer side panels
Shipping Weight (+/- 3 lbs/kgs)	105 lbs/each (47.6 kg)	75 lbs/each (34 kg)
Cabinet Dimensions (Including Grille & Binding Posts)	49 3/4" H x 8 5/8" W x 17" D 126.36cm H x 21.91cm W x 43.18cm D	45 1/2" H x 8 5/8" W x 13" D 115.6cm H x 21.9cm W x 33.0cm D
Base Dimensions	9 5/8" W x 16 3/8" D 24.6cm W x 41.6cm D	9 11/16" W x 13 3/8" D 24.6cm W x 34cm D
Features	PowerPort, dual gold-plated 5-way binding posts ARC Port, magnetic shielding*	PowerPort, dual gold-plated 5-Way binding posts ARC Port, bi-amp/bi-wire terminals, magnetic shielding*
BOOKSHELF LOUDSPEAKERS	LSi9*	LSi7*
Driver Complement	2 - 5 1/4" (13.3cm) Dynamic Balance mid/bass driver 1 - 1" (2.5cm) Dynamic Balance Ring Radiator tweeter	1 - 5 1/4" (13.3cm) Dynamic Balance mid/bass drivers 1 - 1" (2.5cm) Dynamic Balance Ring Radiator tweeter
Frequency Response: Overall / -3dB Limits	38Hz - 27kHz / 50Hz - 26kHz	45Hz - 27kHz / 53Hz - 26kHz
Impedance	compatible with 4 Ohm outputs	compatible with 4 Ohm outputs
Recommended Amplification	20 - 200 Watts / channel	20 - 150 Watts / channel
Efficiency	88dB	88dB
Available Finish	high gloss black, ebony or cherry veneer side panels	high gloss black, ebony or cherry veneer side panels
Shipping Weight (+/- 3 lbs/kgs)	75 lbs/pair (34.0 kg)	50 lbs/pair (22.7 kg)
Dimensions	14 7/8" H x 8 5/8" W x 15 1/4" D 37.8cm H x 21.9cm W x 38.7cm D	13 5/8" H x 8 5/8" W x 10 1/4" D 34.61cm H x 21.91cm W x 26.04cm
Features	PowerPort, dual gold-plated 5-way binding posts, magnetic shielding*, ARC Port, bi-amp/bi-wire terminals	PowerPort, dual gold-plated 5-way binding posts, magnetic shielding*, ARC Port, bi-amp/bi-wire terminals

**SURROUND AND CENTER LOUDSPEAKERS****LSiF/X\*****LSic\***

Driver Complement	2 - 5 1/4" (13.3cm) Dynamic Balance mid/bass drivers 2 - 1" (2.5cm) Dynamic Balance Ring Radiator tweeters	2 - 5 1/4" (13.3cm) Dynamic Balance mid/bass drivers 1 - 1" (2.5cm) Dynamic Balance Ring Radiator tweeter
Frequency Response: Overall / -3dB Limits	40Hz - 27kHz / 52Hz - 26kHz	40Hz - 27kHz / 52Hz - 26kHz
Impedance	compatible with 4 Ohms outputs	compatible with 4 Ohms outputs
Recommended Amplification	20 - 200 Watts / channel	20 - 200 Watts / channel
Efficiency	88dB	88dB
Available Finish	high gloss black	high gloss black
Shipping Weight (+/- 3 lbs/kgs)	55 lbs/pair (24.9 kg)	25 lbs/each (11.3 kg)
Dimensions	15"H x 13 1/4"W x 10"D 38.1cm H x 33.6cm W x 25.4cm D	7"H x 21 3/4"W x 9"D 17.8cm H x 55.2cm W x 22.8cm D
Features	switchable bipole/dipole, PowerPort, dual gold-plated 5-way binding posts, bi-amp/bi-wire terminals	PowerPort, ARC Port, magnetic shielding*, dual gold-plated 5-way binding posts, bi-amp/bi-wire terminals

**POWERED SUBWOOFERS****PSW1000\***

Driver Complement	2 - 10" (25cm) woofers
Amplifier	400 watts into 2 Ohms
Continuous Average Power**	with <1% THD, 20 - 145Hz
Subwoofer Amp Dynamic Power	825 Watts
Port Type	slot loaded PowerPort
Frequency Response: Overall / -3dB Limits	20Hz - 160Hz / 30Hz - 125Hz
Crossover Frequency	adjustable 50Hz - 140Hz
Inputs	speaker, line level & LFE
Outputs	speaker level, pass through or 80Hz high pass filter (switchable). Line level, high pass filter fixed at 80Hz.
Available Finish	high gloss black, ebony or cherry side panels
Shipping Weight (+/- 3 lbs/kgs)	81 lbs/ea (36.7 kg)
Dimensions	16 3/4" H x 16 7/8"W x 19 3/8"D
(Including Grille, Heat Sink, Binding Posts)	42.5cm H x 42.8cm W x 49.2cm D
Features	Auto on/off, unfiltered LFE input, PowerPort, magnetic shielding*, speaker & low level inputs, front panel volume & crossover controls, dual gold-plated 5-way binding posts, +3 db bass boost, 1 1/2" cabinet baffles.

\* Magnetically shielded components for safe placement near TVs or video monitors.

\*\* About Power Ratings:

The Federal Trade Commission has issued new regulations regarding the power ratings of all amplifiers, including self-powered speakers. Polk Audio supports this effort to standardize power testing methods in order to provide consumers with a "level playing field" basis for comparison. Note, however, that the FTC rating is based on the "Continuous Power" output of the amplifier. Music and movies are rarely "continuous" but are mainly composed of short bursts of sound. For this reason we also supply a "Dynamic Power" rating that measures the ability of the amplifier to produce power in short bursts similar to those found in music and movies. In our experience, an amplifier with higher Dynamic Power output will play louder under most conditions regardless of the continuous power rating.

We're fanatics when it comes to providing you useful, accurate information that can help you evaluate our products. But as we all know, we live in an imperfect world. At least some of us do. That's why performance specifications and product dimensions are subject to change without notice. For the most current specifications see our website, [www.polkaudio.com/home](http://www.polkaudio.com/home).

Polk Audio is a Directed Electronics company which trades on NASDAQ under the symbol DEIX. Investor information can be found at <http://investor.directed.com>.

Polk Audio, Polk, PowerPort, Dynamic Balance, F/X, Atrium, Big Speaker Sound Without The Big Speaker, High Velocity Compression Drive, Acoustic Resonance Control, ARC Port, Casket Basket, I-Sonic, SurroundBar & SDA are registered trademarks of Britannia Investment Corporation used under license by Polk Audio, Incorporated. Polk Audio Designs & miDock are trademarks of Britannia Investment Corporation used under license by Polk Audio, Incorporated.

---

Polk Audio is an award-winning designer and manufacturer of high performance audio products and the largest audio brand of Directed Electronics, Inc. (NASDAQ, DEIX). Founded in 1972 by three Johns Hopkins University graduates, Polk Audio holds over 50 patents for advances in audio design and technology. Polk's products include loudspeakers and electronic components for home, auto and marine applications, the first satellite radio home component tuner, the world's first audiophile-grade active IP-addressable loudspeaker, the first THX® Ultra2 Certified in-ceiling loudspeaker and I-Sonic®—the first Entertainment System to include HD™ Radio, XM® Connect & Play capability and a DVD player. Polk products are available through authorized specialist consumer electronics retailers worldwide. For more information and the location of a Polk retailer or distributor in your area, visit [www.polkaudio.com](http://www.polkaudio.com) or call us at 1-800-377-7655 (USA and Canada). Outside of North America call +1 (410) 358-3600.

---

**POLK AUDIO**5601 METRO DRIVE  
BALTIMORE, MD 21215[WWW.POLKAUDIO.COM](http://WWW.POLKAUDIO.COM)CUSTOMER SERVICE:  
800-377-7655 (USA & CANADA)  
410-358-3600 (WORLDWIDE)COPYRIGHT© APRIL 2008  
ALL RIGHTS RESERVED.

## Free Manuals Download Website

<http://myh66.com>

<http://usermanuals.us>

<http://www.somanuals.com>

<http://www.4manuals.cc>

<http://www.manual-lib.com>

<http://www.404manual.com>

<http://www.luxmanual.com>

<http://aubethermostatmanual.com>

Golf course search by state

<http://golfingnear.com>

Email search by domain

<http://emailbydomain.com>

Auto manuals search

<http://auto.somanuals.com>

TV manuals search

<http://tv.somanuals.com>