



RMX 1000 V1.1.1 and SE 200 V3.0.2/CMA Server V4.0 Integration User Guide



Copyright © 2008 Polycom, Inc.
All Rights Reserved

Catalog No. 3150-16966-001
Version 1.1.1

Proprietary and Confidential

The information contained herein is the sole intellectual property of Polycom, Inc. No distribution, reproduction or unauthorized use of these materials is permitted without the expressed written consent of Polycom, Inc. Information contained herein is subject to change without notice and does not represent commitment of any type on the part of Polycom, Inc. Polycom and Accord are registered trademarks of Polycom, Inc.

Notice

While reasonable effort was made to ensure that the information in this document was complete and accurate at the time of printing, Polycom, Inc., cannot assume responsibility for any errors. Changes and/or corrections to the information contained in this document may be incorporated into future issues.

Table of Contents

Introduction	1-1
Manage Device	2-1
Add Device	2-1
View Device status	2-3
Edit Device detail	2-4
Delete Device	2-4
Schedule conference	3-1
Create a template	3-1
Create a conference	3-2
Manage conference	4-1
Change Layout	4-2
Extend Conference	4-2
Manage participant	4-3
Add participant	4-3
Connect/Disconnect Participant	4-5
Remove Participant	4-6
Mute/unmute Participant	4-7
Terminate conference	5-1

Introduction

SE 200 V3.0.2/CMA V4.0 can be used to manage RMX 1000 V1.1.1 , include device management, conference scheduling, and conference management.

This guide mainly takes detailed explanation about how SE 200 V3.0.2/CMA V4.0 integrated manages RMX 1000.

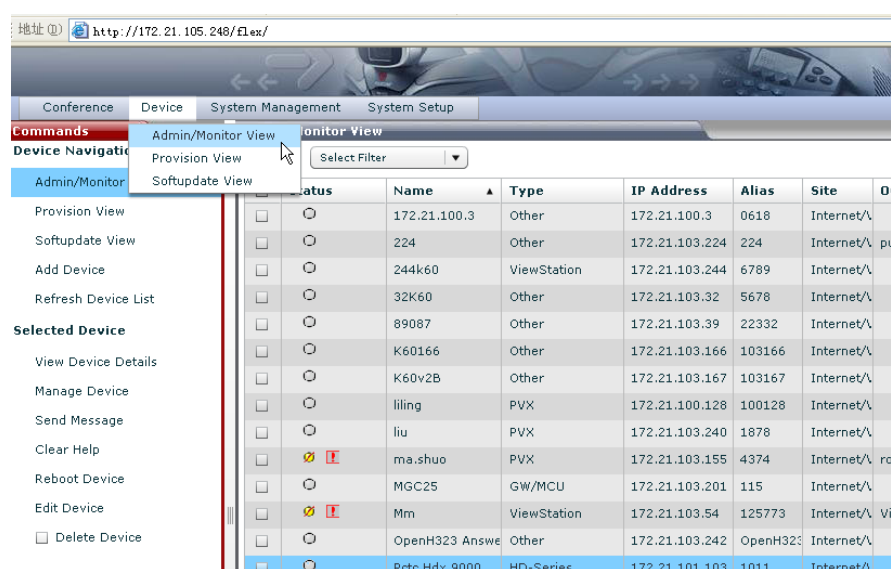
The specific contents are as follows:

- Manage Device
- Schedule conference
- Manage conference:
- Change layout
- Extend conference
- Add participant
- Connect/ disconnect participant
- Remove participant
- Mute/unmute participant
- Terminate conference

Manage Device

Add Device

- 1 Click **Device | Admin/Monitor View**, See the following drawing:



- 2 Click **Add Device** listed in **Commands | Device Navigation**, there will pop-up **Add New Device** page.

Set information as follows:

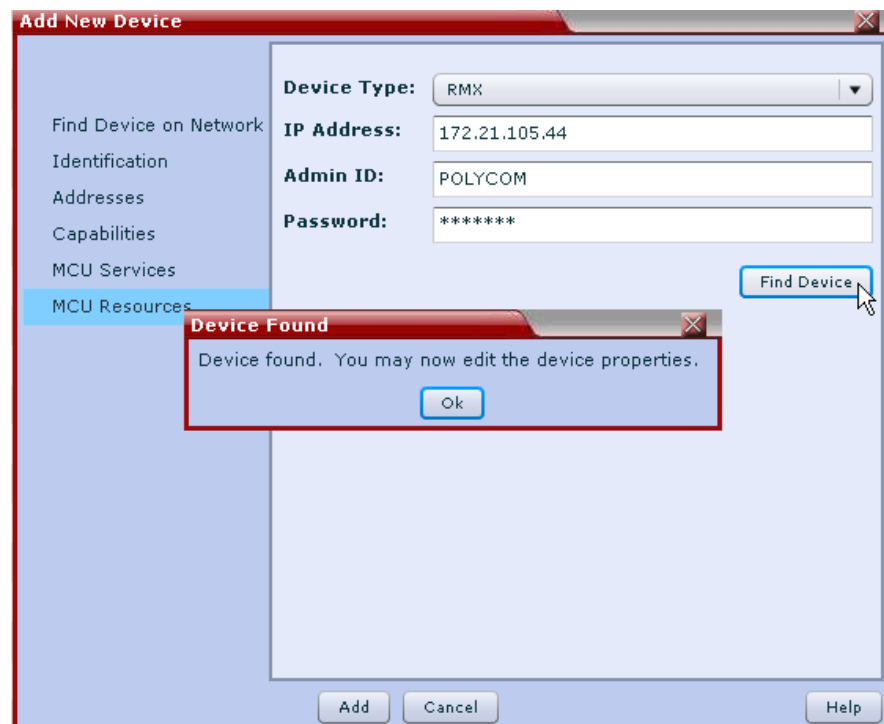
- a. Select **Device Type** to **RMX**,
- b. Set **IP Address** to a valid IP of RMX 1000 device,
- c. Set **Admin ID** to a valid username of the RMX 1000 device,
- d. Set **Password** to a valid password of the RMX 1000 device,

See the following drawing:



- 3 Click **Find Device**, RMX 1000 device will be found, and system will pop-up a **Device Found** message.

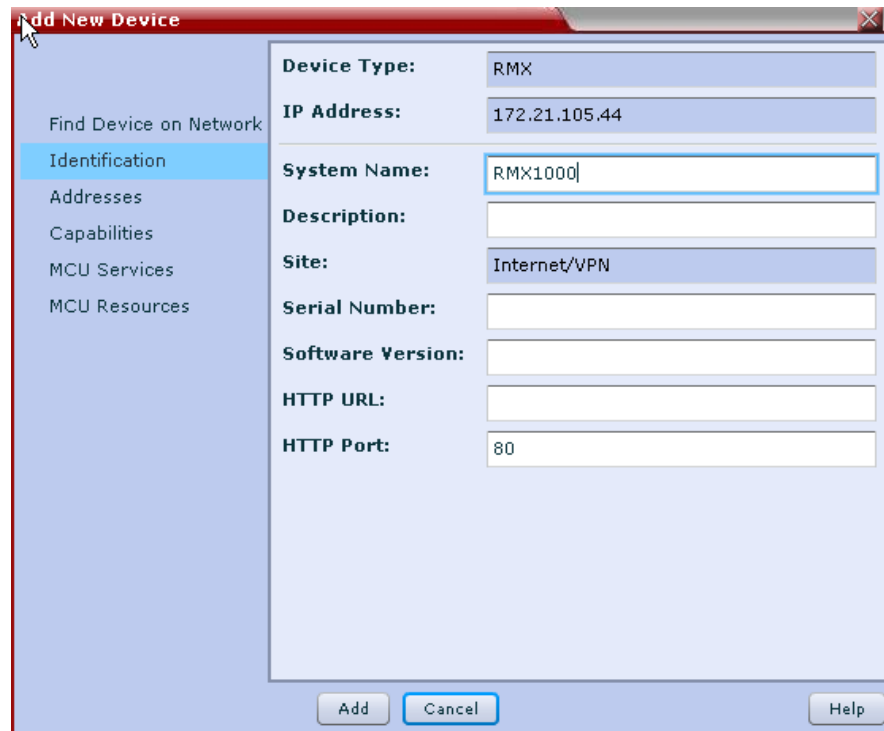
See the following drawing:



- 4 Click **OK**.
- 5 Click **Identification**; set **System Name** to a valid value. Here we set to

RMX1000.

See the following drawing:

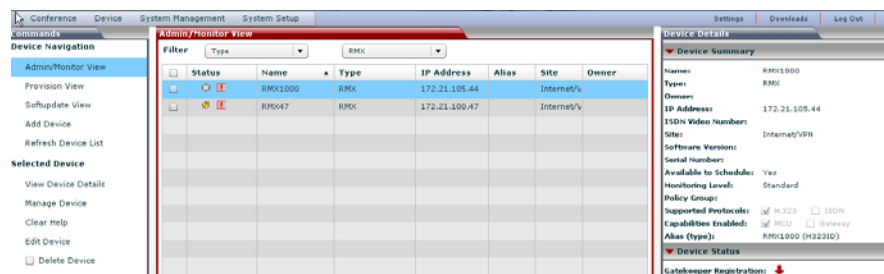


- 6 Click **Add**, **Add New Device** command will submit, and if no error message pop-up, means the RMX 1000 device is added successfully.

View Device status

- 1 Click **Admin/Monitor View**, select **Filter** to Type, and select another drop-down box behind **Filter** to RMX, device named RMX1000 lists in the device list.
- 2 View **Status** of RMX1000 in the list.

See the following drawing:



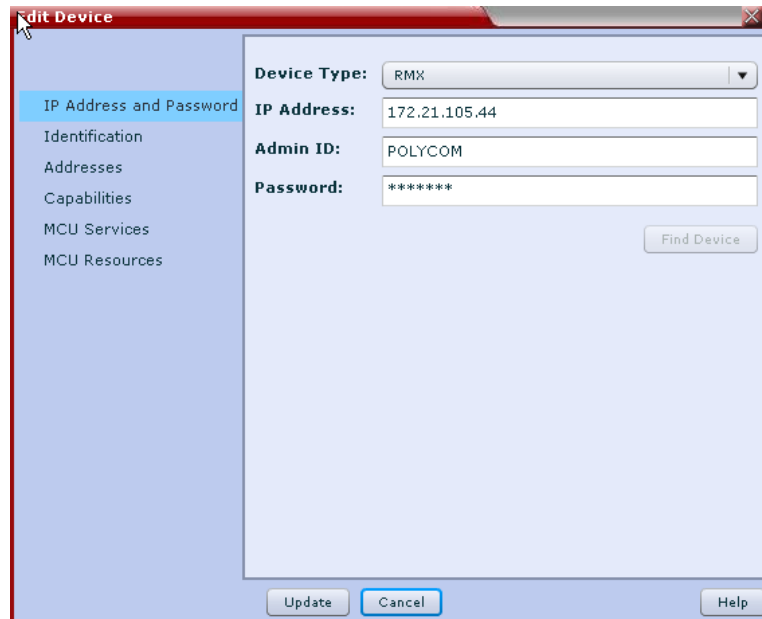
- 3 Select RMX1000 in the list, and view **Device Summary**, device details is same as user set.

Also user can click **View Device Details** to view the device details.

Edit Device detail

- 1 Select RMX1000 in the device list, then click **Edit Device**, **Edit Device** page will pop-up, user can edit the device details.

See the following drawing:



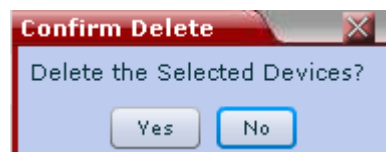
- 2 Click **Update**, **Edit Device** command will submit.

Delete Device

Select RMX1000 in device list, set the checkbox to **SELECTED**. And then click **Delete Device**.

Confirm Delete message will pop-up, user can click **Yes** to confirm delete the device in SE 200 V3.0.2/CMA V4.0, or click **No** to cancel the delete operation.

See the following drawing:

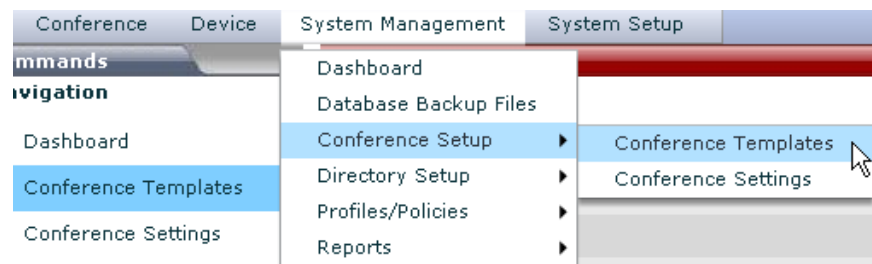


Schedule conference

Create a template

Create a template with the same **RMX Profile Name** in RMX1000 device

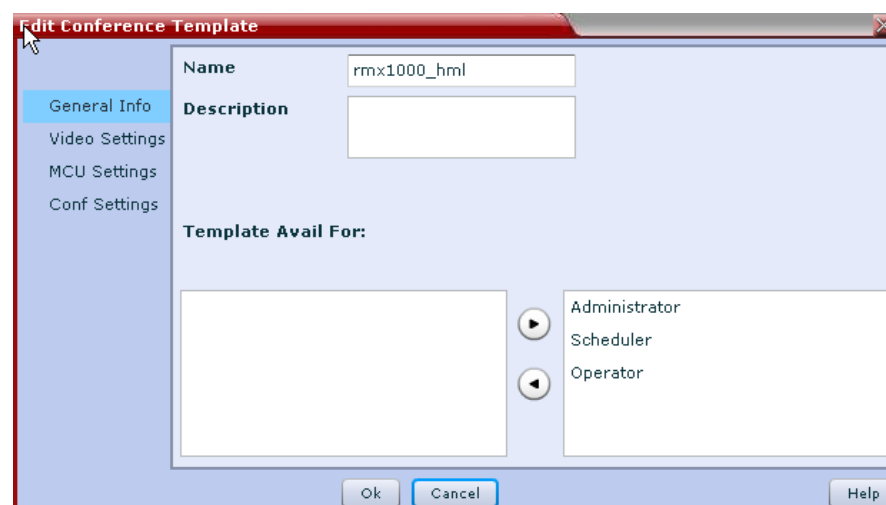
- 1 Click **System Management | Conference Setup | Conference Templates**, see the following drawing:



- 2 New information and new command will display in the page. Click **Add**
- 3 Set Add Conference Template information:

- a. Set **General Info** page:
- b. Set **Name** to a valid value. Here we set Name to rmx1000_hml.

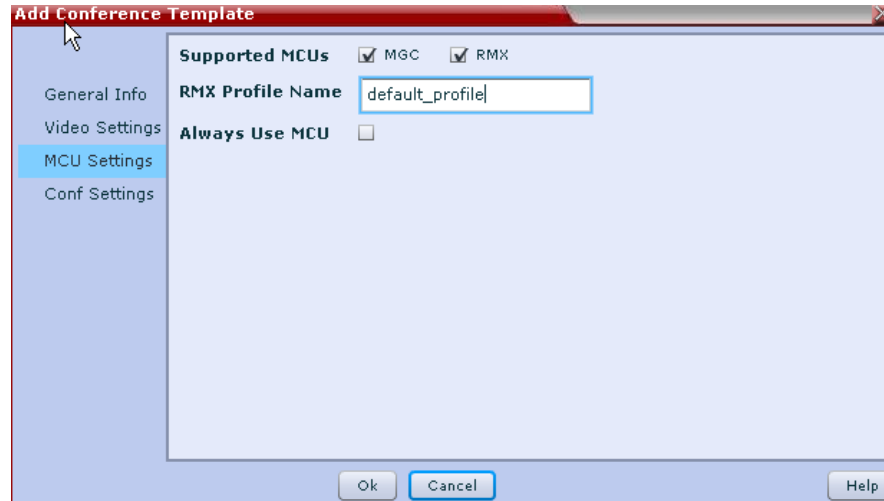
See the following drawing:



c. Set **MCU Settings** page:

Set **Supported MCUs | RMX** to **SELECTED**;

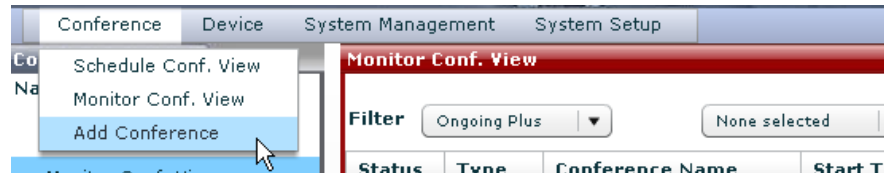
Set **RMX Profile Name** to a profile which exists in the profile list of the RMX 1000 device. See the following drawing:



Create a conference

1 Click **Conference | Add Conference**,

See the following drawing:



2 **Add Conference** page will display, and set following information:

Set **Conference Name** to a valid value; here we set to admin – testconf.

Set **Start Time**;

Set **Duration** or **End Time**;

User can set **Recurrence** for schedule a recurrent conference;

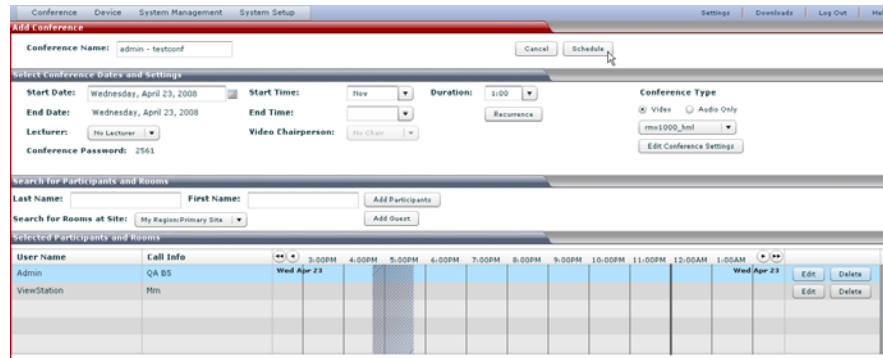
Add at least two video resources or participants in a video conference.

Three methods to add resources or participants into conference: **Search For Rooms at Site**; use **Add Participants**; use **Add Guest**;

Select a valid template; here we select template named rmx1000_hml which has same profile in RMX1000 device.

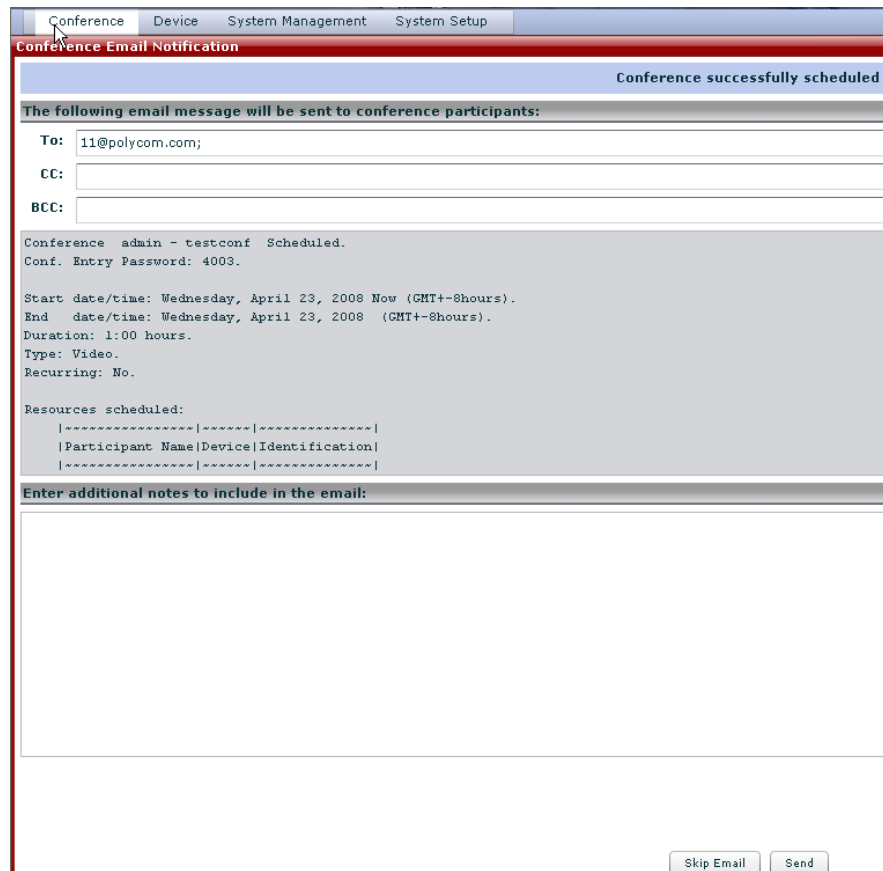
Click **Schedule**;

See the following drawing:



- 3 Conference Email Notification page will display.
- 4 And then user can click **Skip Email**, Email send will cancel; click **Send**, a Conference successfully scheduled email will be sent to participants in conference.

See the following drawing:

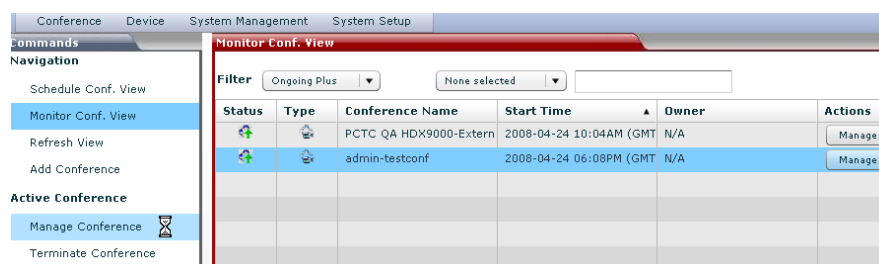


- 5 Conference created successfully.

Manage conference

- 1 Click **Monitor Conf. View**, select **Filter**.
- 2 Conferences corresponding to **Filter** which user selected list in **Monitor Conf. View** list.
- 3 Select one conference, and click **Manage**; Here we select admin-testconf;
- 4 Click Manage Conference or Manage.

See the following drawing:

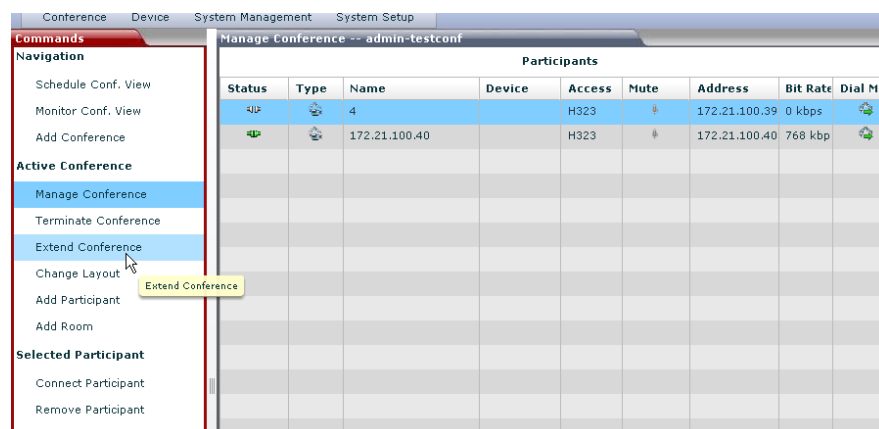


- 5 Page will change to **Manage Conference - admin-testconf** with new Commands:

Active Conference | Terminate Conference; Extend Conference; Change Layout; Add Participant.

Selected Participant.

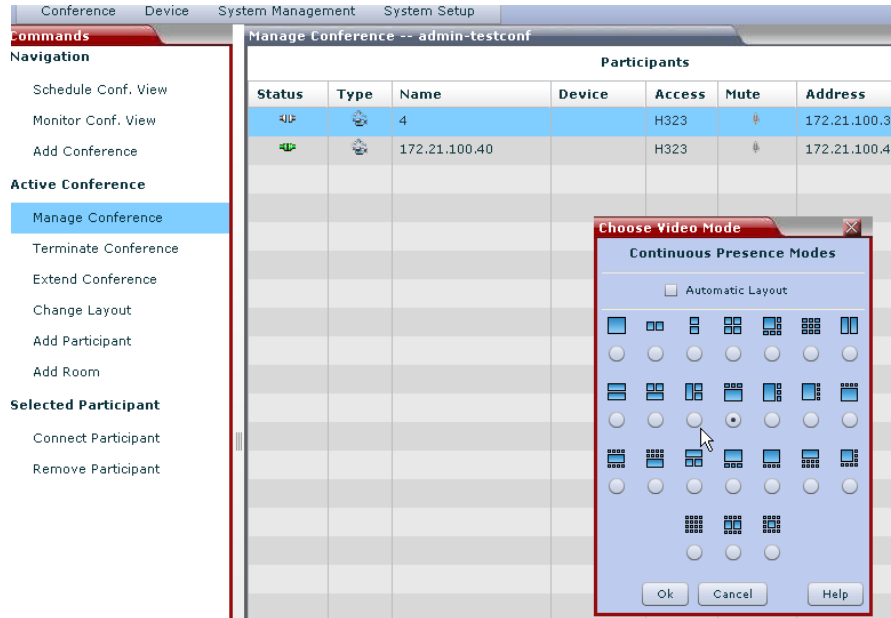
See the following drawing:



Change Layout

Click **Change Layout**, **Choose Video Mode** page will pop-up. User can change conference layout in the page, and Click **OK** to submit.

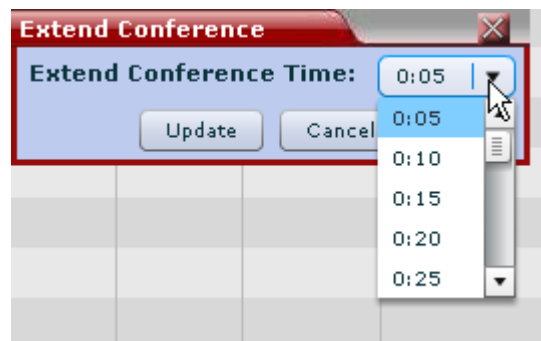
See the following drawing:

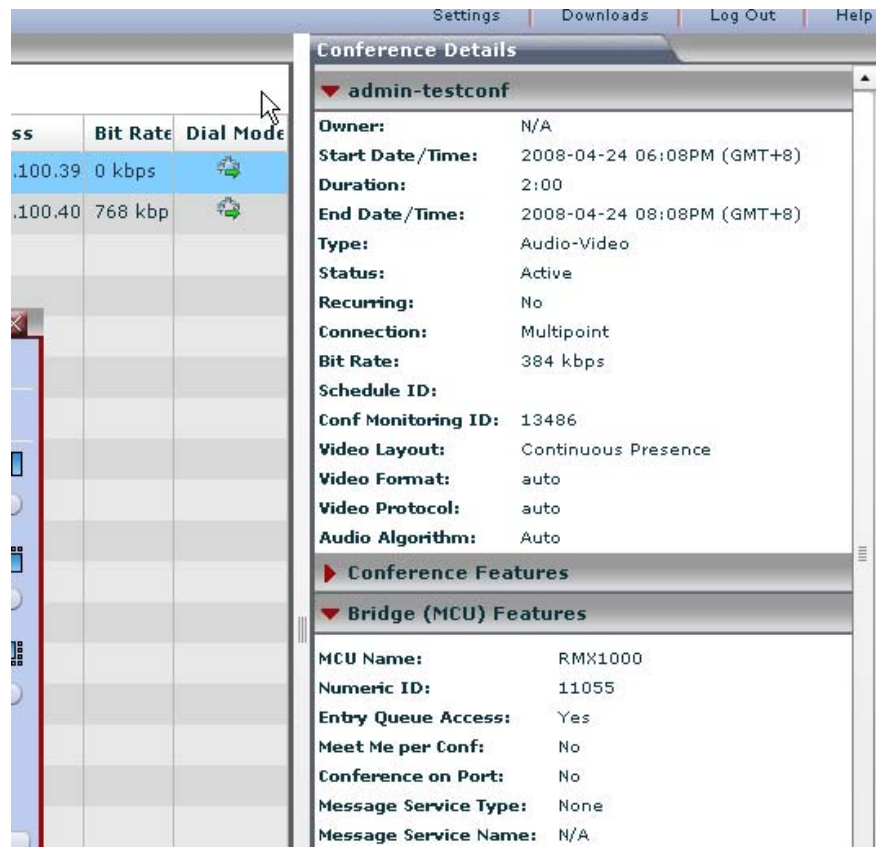


Extend Conference

- 1 Click **Extend Conference**, and then select **Extend Conference Time**, click **Update**.
- 2 View **Conference Details**, **Duration** and **End Data/Time** will auto update.

See the following drawing:



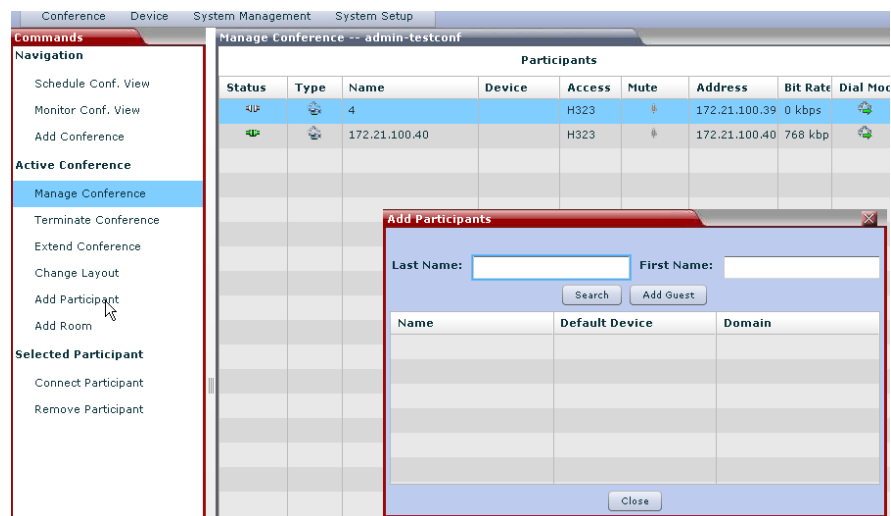


Manage participant

Add participant

- 1 Click Add Participant, Add Participants page will pop-up.

See the following drawing:

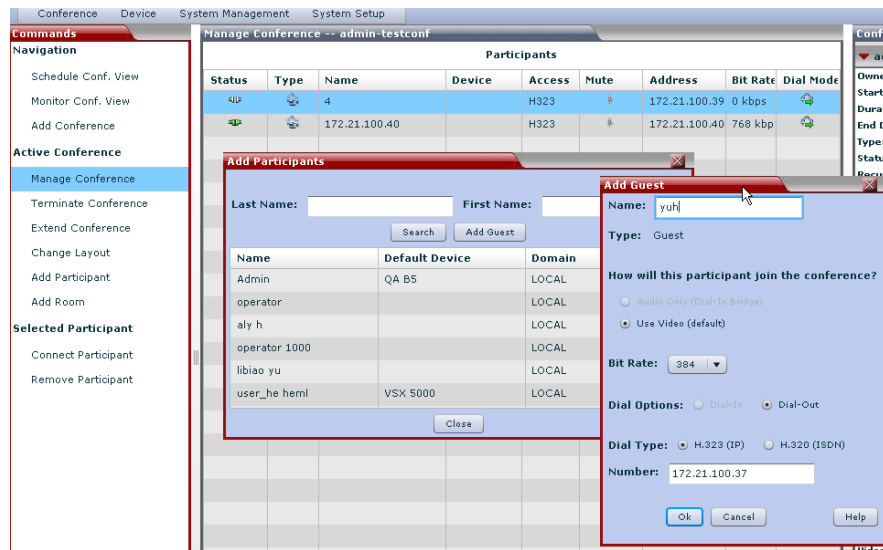


- 2 Click **Search**, user can add Participants in the participant list.

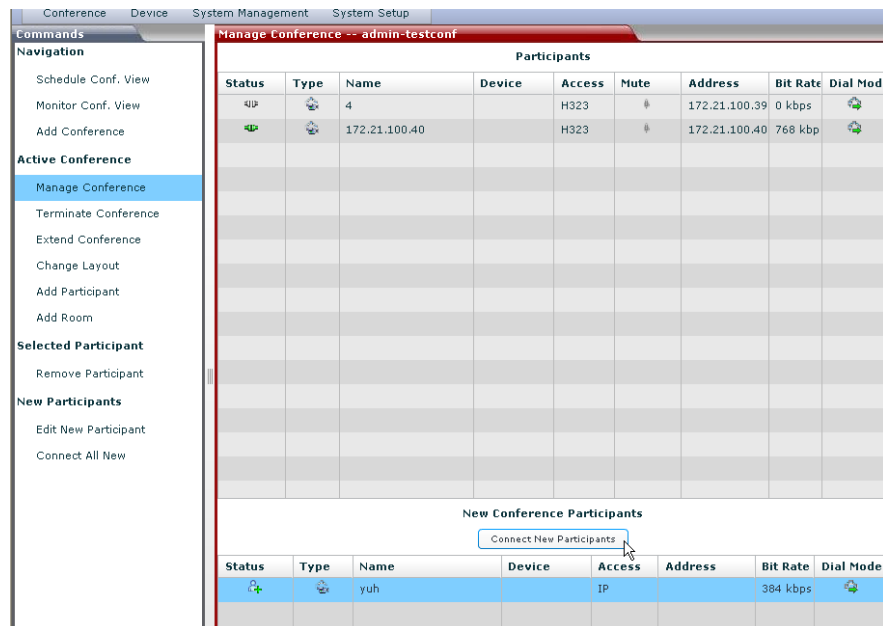
Chapter 4- Manage conference

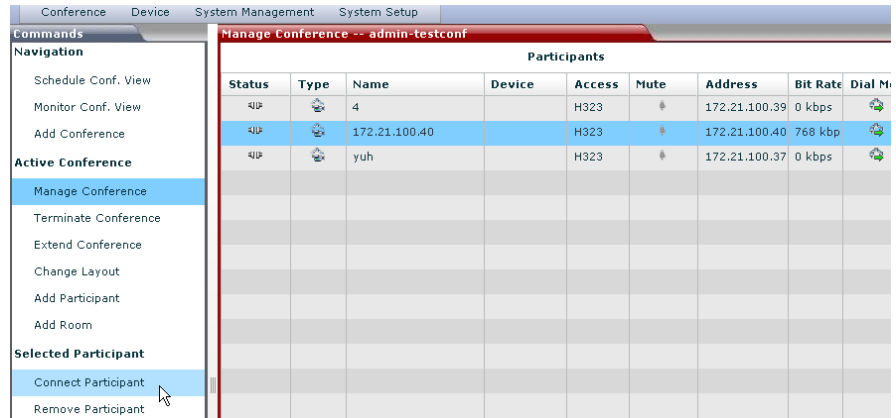
Also user can click **Add Guest**, and then input valid **Name** and **Number**.
And then click **OK**.

See the following drawing:



- 3 Click **Connect New Participants**, the selected participant will add to the Participants list.

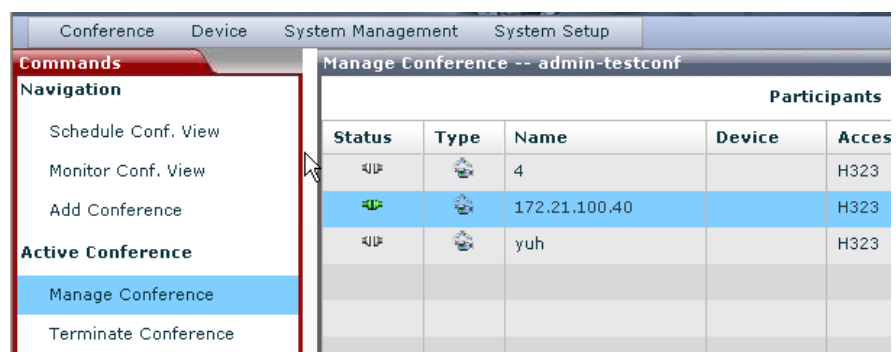
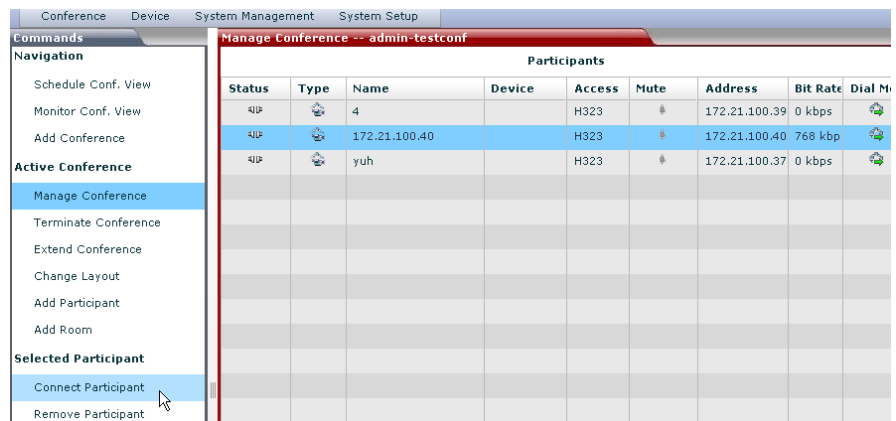




Connect/Disconnect Participant

- 1 Select a disconnected participant in the Participants list. Click **Connect Participant**.

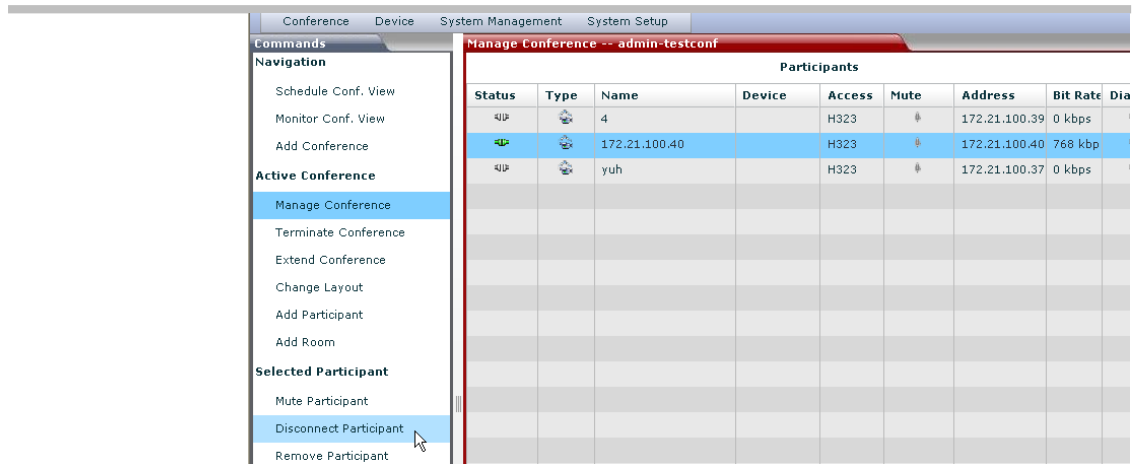
See the following drawing:



- 2 Select a connected participant in Participants list, click **Disconnect Participant**.

See the following drawing:

Chapter 4- Manage conference

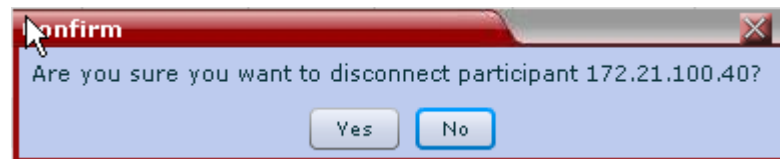


3 **Confirm** information will pop-up.

Click **Yes**, the **Disconnect Participant** command will submit.

Click **No**, the **Disconnect Participant** command will cancel.

See the following drawing:



Remove Participant

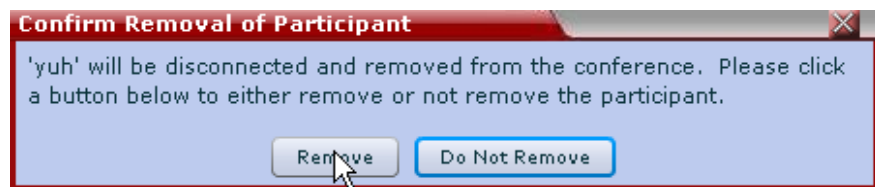
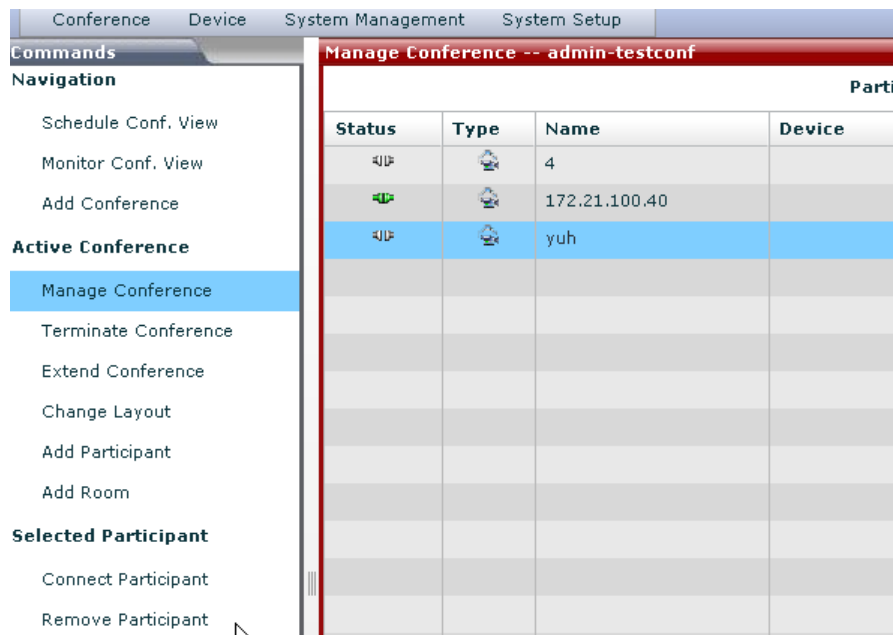
1 Select a participant in list, and then click **Remove Participant**.

2 **Confirm** information will pop-up.

3 Click **Yes**, the **Remove Participant** command will submit.

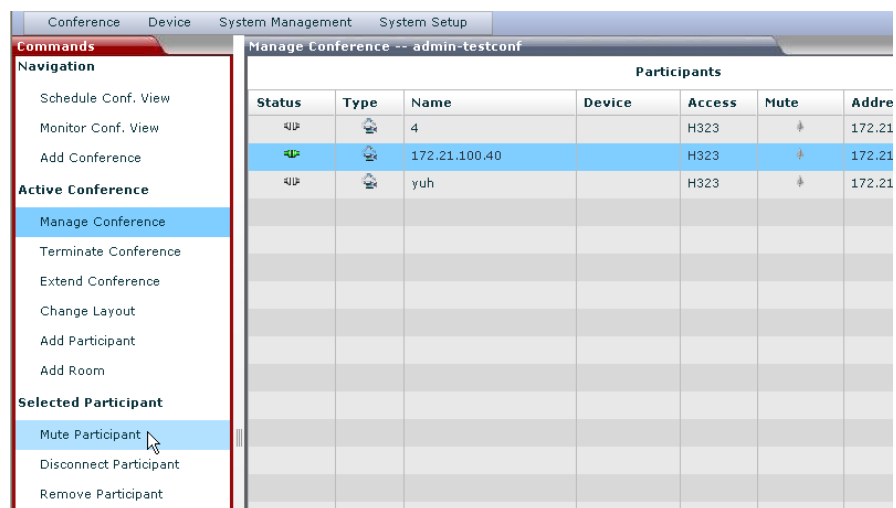
4 Click **No**, the **Remove Participant** command will cancel.

See the following drawing:



Mute/unmute Participant

- 1 Select a unmuted participant in Participants list, click **Mute Participant**;



- 2 Select a muted participant in list, and then click **Unmute Participant**.

Chapter 4- Manage conference

Conference Device System Management System Setup

Commands Manage Conference -- admin-testconf

Navigation

- Schedule Conf. View
- Monitor Conf. View
- Add Conference

Active Conference

- Manage Conference
- Terminate Conference
- Extend Conference
- Change Layout
- Add Participant
- Add Room

Selected Participant

- Unmute Participant
- Disconnect Participant
- Remove Participant

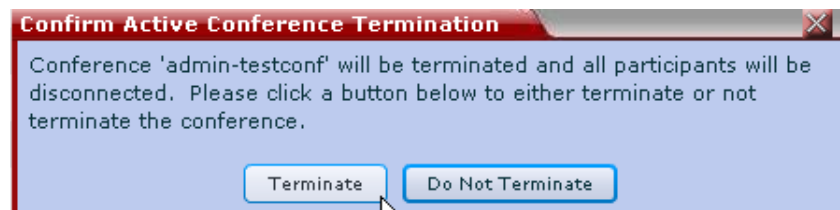
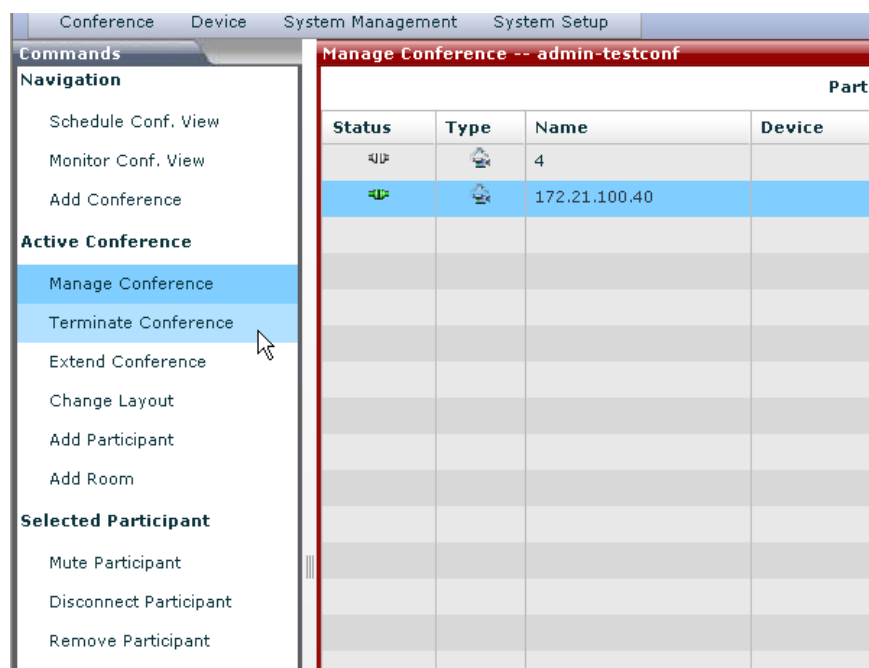
Participants

Status	Type	Name	Device	Access	Mute	Address
4IP		4		H323		172.21.100.39
4IP		172.21.100.40		H323		172.21.100.40
4IP		yuh		H323		172.21.100.37

Terminate conference

- 1 Select an activated conference in **Monitor Conf. View** list, and click Terminate Conference,
- 2 Confirm Active Conference Termination information will pop-up.
 - Click **Terminate**, the **Terminate Conference** command will submit.
 - Click **Do Not Terminate**, the **Terminate Conference** command will cancel.

See the following drawing:



Free Manuals Download Website

<http://myh66.com>

<http://usermanuals.us>

<http://www.somanuals.com>

<http://www.4manuals.cc>

<http://www.manual-lib.com>

<http://www.404manual.com>

<http://www.luxmanual.com>

<http://aubethermostatmanual.com>

Golf course search by state

<http://golfingnear.com>

Email search by domain

<http://emailbydomain.com>

Auto manuals search

<http://auto.somanuals.com>

TV manuals search

<http://tv.somanuals.com>