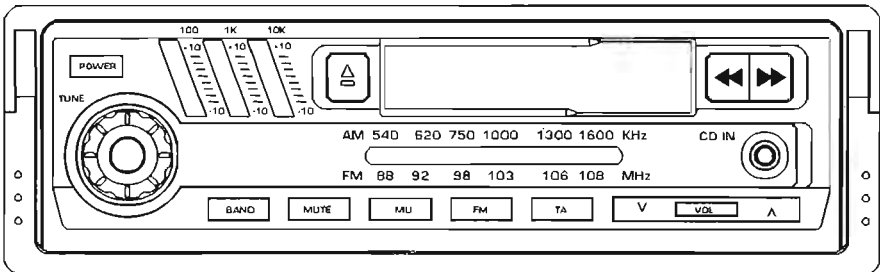
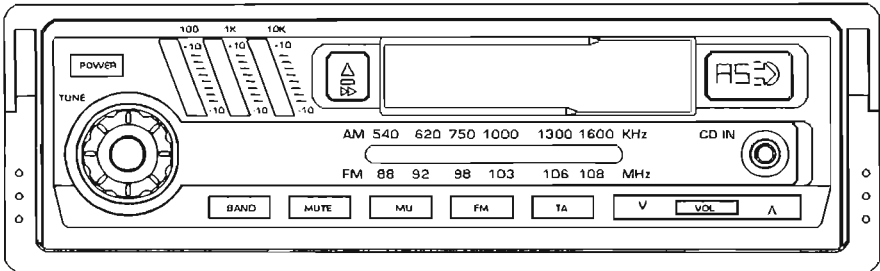




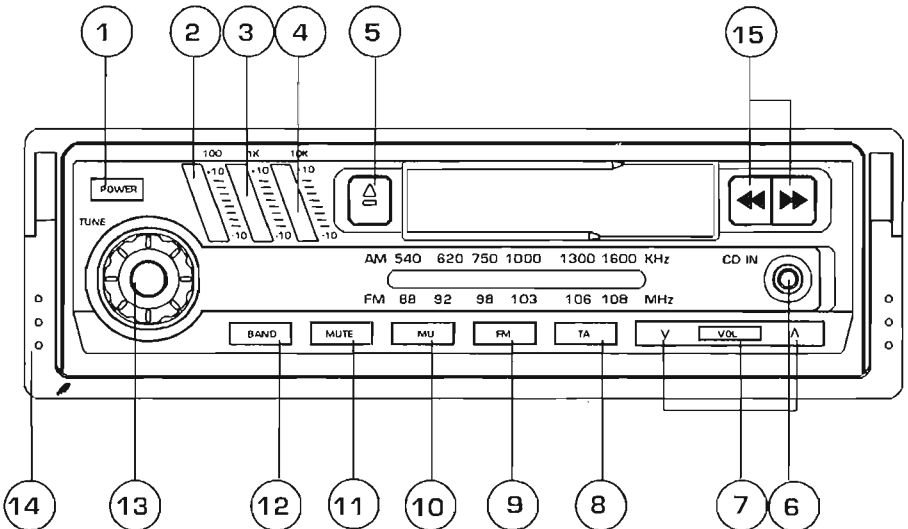
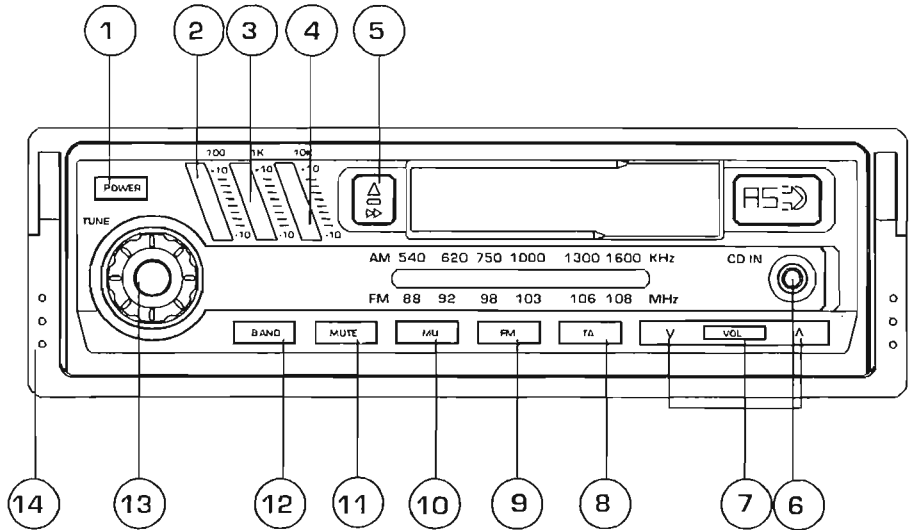
PA-360EQ
PA-362EQ

INSTRUCTION MANUAL



**ANTI - THEFT PULL OUT WITH 2 - BAND AM/FM
RADIO CASSETTE PLAYER**

LOCATION AND FUNCTION OF CONTROL



1. POWER BUTTON

Press this button to turn to turn on the unit.

2.3.4. EQ KNOBS

Slide these knobs to obtain the good sound quality.

5. EJECT BUTTON

For AUTO-REVERSE: Push the button to eject the tape.

For AUTO-STOP: Push the button half way in to fast wind the tape, push the button fully in to eject the tape.

6. CD IN JACK

7. VOLUME BUTTONS

Press the ∇ button or \wedge button to adjust the volume level.

8.9.10. LED INDICATOR

11. MUTE BUTTON

Press it to reduce the sound immediately.

12. BAND BUTTON

Press it to select you desired radio broadcasting band.

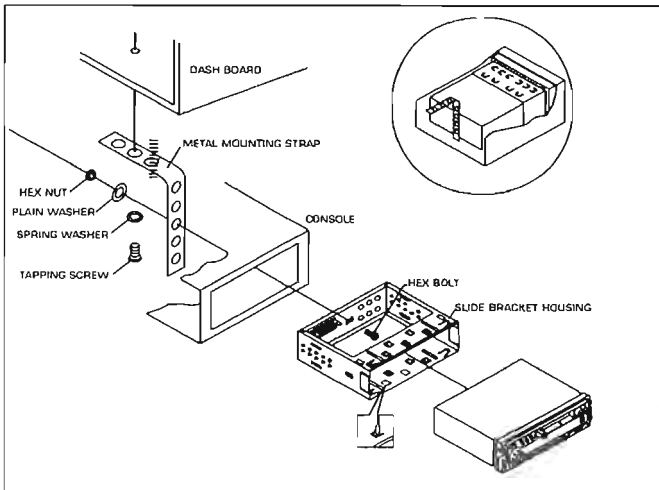
13. TUNING BUTTON

Rotate this knob to get you desired radio broadcasting.

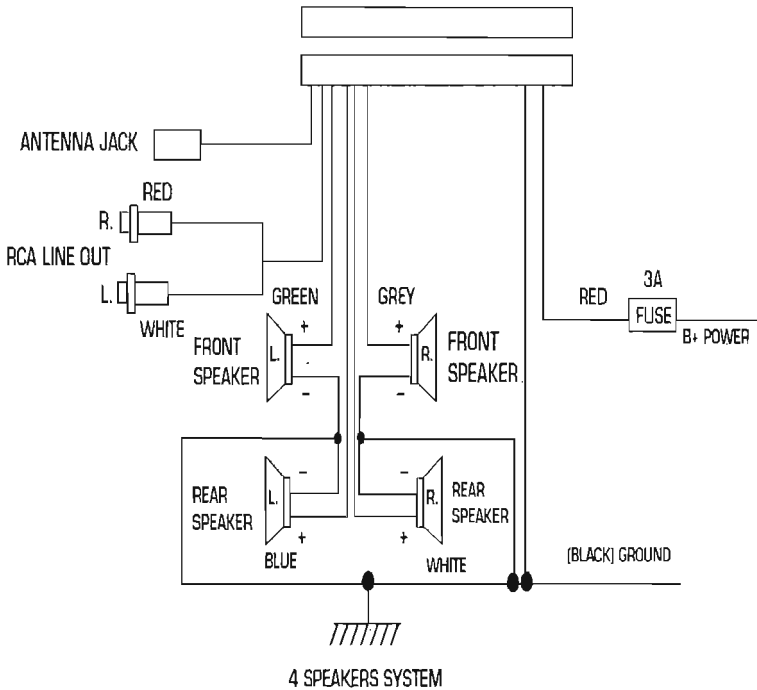
14.PULL OUT HANDLE

15. FAST FORWARD/REWIND PROGRAM BUTTONS

INSTALLATION



WIRING CONNECTION



SPECIFICATION

GENERAL

Power Supply Requirements.....DC 12V.
 Chassis Dimensions.....178[W]X148[D]X51[H].

FM SECTION

Frequency Range.....88MHz - 108MHz.

AM SECTION

Frequency Range.....540KHz - 1600KHz.

IMO-1363A

Free Manuals Download Website

<http://myh66.com>

<http://usermanuals.us>

<http://www.somanuals.com>

<http://www.4manuals.cc>

<http://www.manual-lib.com>

<http://www.404manual.com>

<http://www.luxmanual.com>

<http://aubethermostatmanual.com>

Golf course search by state

<http://golfingnear.com>

Email search by domain

<http://emailbydomain.com>

Auto manuals search

<http://auto.somanuals.com>

TV manuals search

<http://tv.somanuals.com>