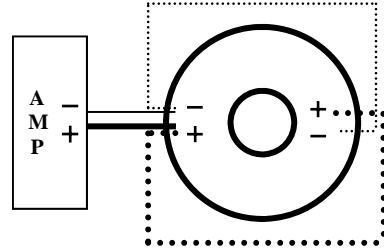
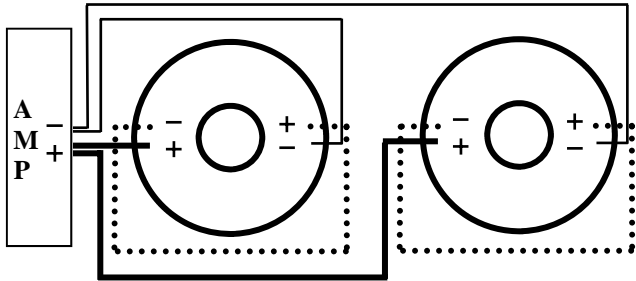


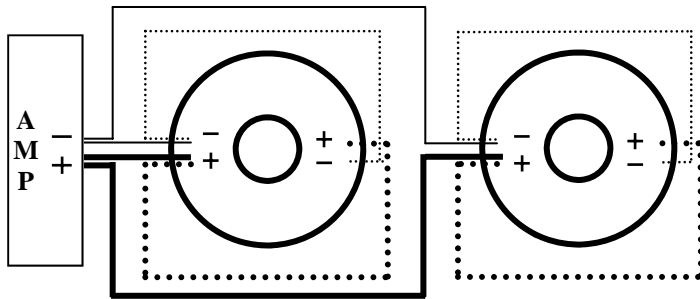
1 Sedona Woofer Wired to 8Ω



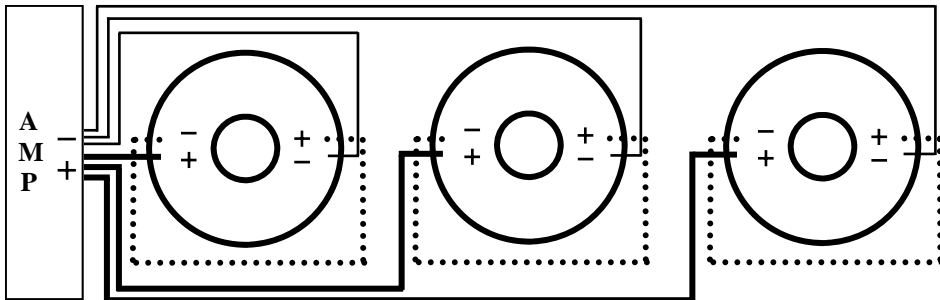
1 Sedona Woofer Wired to 2Ω



2 Sedona Woofers Wired to 4Ω



2 Sedona Woofers Wired to 1Ω



3 Sedona Woofers Wired to 2.66Ω

WWW.PRECISIONPOWER.COM

**PrecisionPower™**  
*Absolutely State of the Art Mobile Audio™*

## 2010 SEDONA SERIES SUBWOOFERS

S.12

S.15



Thank you for choosing **PrecisionPower** woofers. Designed and engineered in the USA, this product combines innovative technology with the finest materials to consistently deliver *Absolutely State of the Art* performance, sound quality, reliability, and value. This **PrecisionPower** product reflects our commitment to offer you unparalleled performance and quality for years of dependable service and listening enjoyment.

## Features, Parameters, & Dimensions

**Injection Molded Polypropylene/Mica  
Cone & Dust Cap  
ABS Gasket  
2" 4-layer VC on Kapton Former**

**Quick Disconnect Terminals  
CONEX Composite Spiders  
Stamped Steel Frame  
Vented T-Yoke Back-plate**

series wired	S.12	S.15
Fs (Hz)	22.89	19.52
Qms	3.57	4.279
Vas (ft <sup>3</sup> )	3.34	5.076
Cms (mm/N)	0.266	0.146
Mms (g)	181.5	456.7
Rms (kg/s)	7.311	13.09
Xmax (mm)	8.1	8.1
Xmech (mm)	12.15	12.15
Piston Diameter (in)	11.26	12.83
Sd (in <sup>2</sup> )	77.5	129.2
Qes	0.755	0.933
Re (Ω)	7.2	7.2
Z (Ω)	8	8
BL (Tm)	15.78	20.79
Rms Power (watts)	250	300
Qts	0.623	0.766
NO (%)	0.145	0.111
1w/1m SPL (dB)	83.64	82.47
2.8V SPL (dB)	84.22	83.06
Voice Coil Diameter (in)	2"	2"
Impedance (Ω)	DVC 4Ω	DVC 4Ω
M-vd (ft. <sup>3</sup> )	0.0956	0.174

## Enclosure Dimensions

Included in this manual are a number of different enclosure suggestions. These are by no means the only enclosures to use, but they provide a starting point to determine the correct enclosure for your needs many factors must be addressed (amount of power, vehicle, placement, crossovers, etc) Therefore, as always **PrecisionPower** recommends that your subwoofer be installed by an authorized **PrecisionPower** dealer.

## Enclosure Construction

All enclosures should be made of .75" (3/4") material only. When possible, make the baffle 1.5" (1 1/2) thick and add .75" (3/4") to the depth of the enclosure to compensate. All volumes **INCLUDE** vent/port and subwoofer displacements. **DO NOT** change the volume unless you plan on adding a substantial amount of bracing. For added performance, applying a coat of fiberglass resin to the interior walls will greatly improve sealing the enclosure. Adding a thin layer of poly-fill will improve response by smoothing out reflections within the enclosure.

## Enclosure Recommendations

S.12 Sealed				S.12 Ported				
Vol. (ft. <sup>3</sup> )	Dimensions (H x L x D)	QTC	-3dB (Hz)	Vol. (ft. <sup>3</sup> )	Dimensions (H x L x D)	Port (dia. X L)	Freq. (Hz)	-3dB (Hz)
1.00	13x14.75x13	1.221	35.5	2.00	14x23.75x14	4" x 12"	35	30.1
1.50	13x21.25x13	1.056	31.2	2.50	14x29.25x14	4" x 12"	28.1	25.8
2.00	13x27.75x13	0.962	30.2	3.00	14x34.75x14	4" x 12"	25.9	23.9

S.15 Sealed				S.15 Ported				
Vol. (ft. <sup>3</sup> )	Dimensions (H x L x D)	QTC	-3dB (Hz)	Vol. (ft. <sup>3</sup> )	Dimensions (H x L x D)	Port (dia. X L)	Freq. (Hz)	-3dB (Hz)
2.00	18x17.5x15	1.361	27.1	3.00	17x23.25x17	4" x 12"	28.8	25.2
3.00	18x25x15	1.178	24.2	4.00	17x30.5x17	4" x 12"	24.7	21.5
4.00	18x33x15	1.076	22.7	5.00	17x37.5x17	4" x 12"	22	19

## Free Manuals Download Website

<http://myh66.com>

<http://usermanuals.us>

<http://www.somanuals.com>

<http://www.4manuals.cc>

<http://www.manual-lib.com>

<http://www.404manual.com>

<http://www.luxmanual.com>

<http://aubethermostatmanual.com>

Golf course search by state

<http://golfingnear.com>

Email search by domain

<http://emailbydomain.com>

Auto manuals search

<http://auto.somanuals.com>

TV manuals search

<http://tv.somanuals.com>