

# **CARDIO** *Theater*<sup>®</sup>

## **PVS-15**

### **Personal Viewing System Assembly and Operation Manual**



Cardio Theater Holdings, Inc.  
21420-D NW Nicholas Court #12-13  
Hillsboro, OR 97124  
**(800) 776-6695**  
**(503) 645-8881**  
[www.cardiotheater.com](http://www.cardiotheater.com)

## TABLE OF CONTENTS

Parts List.....	Page 2
Stand Assembly.....	Page 3-4
DVD Player Assembly.....	Page 5-7
LCD Screen Assembly.....	Page 8-9
Mounting Screen Controller.....	Page 10
Programming TV Channels.....	Page 11
Cable Management.....	Page 12
RF Distribution.....	Page 13
Specifications.....	Page 14
Warranty.....	Page 15
Technical Support.....	Page 16

## **Parts List:**

### **Master Set Up Package**

- 1 Master IR Remote Control
- 1 Operations Manual
- 1 Screen Controllers (1 for each Screen)
- 1 Neoprene Mounting Pad (1 for each controller)
- 1 DVD Player Master IR Remote (Optional)

### **Screen Box**

- 1 15 inch LCD Screen
- 1 AC Adapter
- 1 Adapter Power Cord
- 1 LCD Back Cover
- 1 Controller Cable
- 1 LCD Screen Hardware Package
- 4 Wire Ties

### **Stand Box**

- 2 Stand Feet
- 1 Base Cross Bar
- 1 Lower Vertical Tube
- 1 Upper Vertical Tube (Short or Long Model)
- 1 Base Cover
- 1 Coax / Power Cable
- 8 Hex Screws

### **DVD Player Box (Optional)**

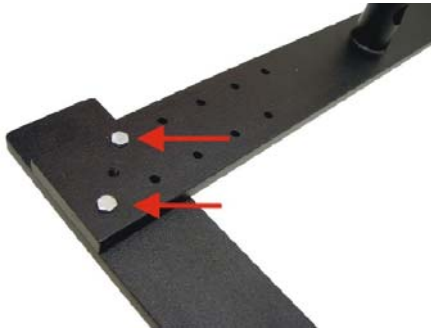
- 1 DVD Player
- 1 12 Volt Power Cable
- 1 Audio / Video RCA Patch Cord

### **DVD Bracket (Optional)**

- 1 Long or Short Bracket (as ordered)
- 1 Back Cover (Short Version Only)
- 1 DVD Hardware Package

# Stand Assembly

## Step 1



Determine width of stand feet in relation to the cardio equipment. Use a 7/16 wrench to secure 2 hex screws per leg.

## Step 2



Insert lower vertical tube over center stub and hand install one 3/16 Allen head screw a few turns into vertical tube. Do not tighten at this time. (Clearance needed for Wires)

## Step 3



Insert plastic base cover over lower vertical tube. Do not fasten down at this time.

## Step 4



Insert upper curved tube into lower tube. Do not install bolts until **step 5** is performed, then adjust upper tube to desired height and install two Allen screws as shown above.

## Step 5



Insert cable assemblies through upper tube opening and bring out lower tube hole as shown.

## Step 6



Mount power supply with 2 wire ties to the base assembly. Plug power supply connector into cable previously installed down vertical tube.

## Stand assembly- continued

### Step 7



Route coax and AC power plug to center Opening of base cover and make sure to tighten lower bolt before installing cover.

### Step 8



With cables properly placed in cover slot, secure base cover with 2 Allen head screws provided.

### Step 9



## **DVD Player Assembly**

**NOTE: Skip to Page 7 if not installing DVD Player**

**Important:** There are two models of DVD brackets.



**Short DVD Bracket  
For S Model Stand**



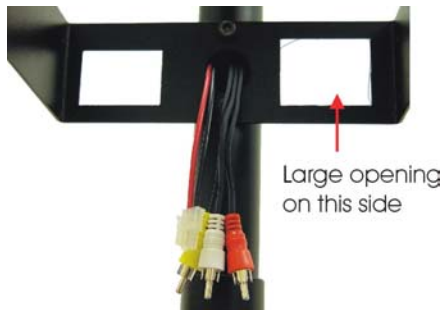
**Long DVD Bracket  
For L Model Stand**

- 1: Run supplied Audio Video cable and DVD 12 Volt Power cable from opening at top of stand out through large round hole in upper tube of stand.



2: Pull Audio/Video and 12 Volt Power cable wires through hole in DVD bracket and attach bracket to stand with 2 hex screws provided.

**IMPORTANT: When attaching Short Version, confirm that the large square opening on the rear of the bracket is positioned on the right side of the stand tube as shown.**



**Short Version**



**Long Version**

- 3: Plug Audio Video cable into the Video & Audio "Output" on the rear of the DVD player.
- 4: Plug 12 Volt Power cable into 12 Volt input on rear of DVD player.
- 5: **Remove two security screws from top of DVD player.**  
Attach DVD player to bracket with 4 Phillips screws provided.



**Short Version**

Attach back cover with 4 Phillips screws provided.



**Long Version**

6: Connect DVD 12 Volt Power cable to main Coax / Power wire coming through top of stand.



7: Connect the Video cable coming from the DVD player "Output" to the connector labeled "Video Y" on the back of the monitor and the cable going from the DVD players audio outputs to "Audio Left & Right" input on the back of the monitor.

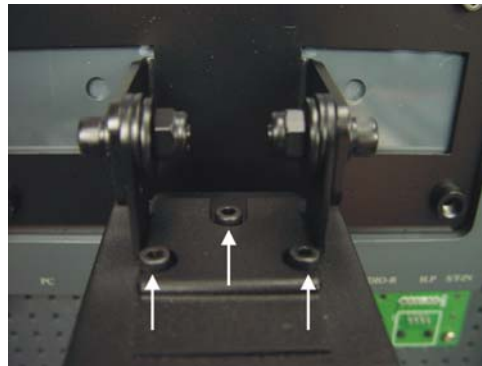


## LCD Screen Assembly

1. Attach pivot assembly to back of LCD monitor using upper two mounting holes as shown in figure 1. Leave out the lower two mounting screws until after all wiring is installed onto back of monitor.
2. Install monitor assembly onto upper stand tube using (3) M4 X 10mm socket head cap screws as shown in Figure 2
3. Install power connector from harness that was installed into stand assembly earlier, to input on back of monitor labeled "DC12V" as shown in figure 3.
4. Plug Screen Controller cable from stand harness to telephone type RJ45 plug on back of monitor. (Figure 4)



**Figure 1**



**Figure2**



**Figure 3**



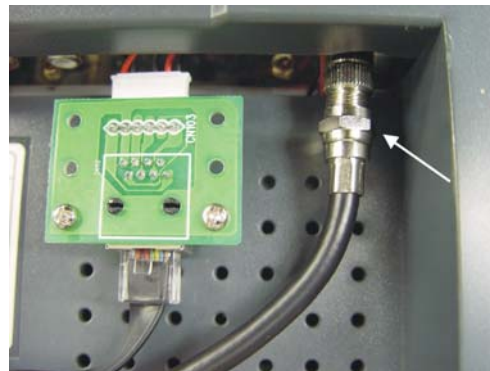
**Figure 4**

## LCD Screen Assembly (continued)

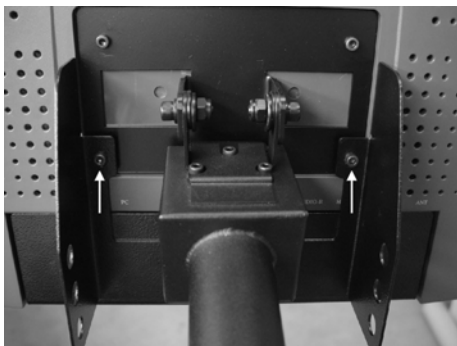
5. Remove slip-on antenna connector from monitor by pulling straight down on connection (Figure 5).  
Screw slip-on connector onto coax cable and then push assembly back into the monitor's antenna connector. (Figure 6)
6. Attach Back Cover plate using 2 M4 x 10mm black screws. (Figure 7)  
Note: Before securing back cover, confirm that all cables connected to LCD screen have sufficient slack for tilting the monitor and are not that they are not intertwined.



**Figure 5**



**Figure 6**



**Figure 7**

7. Pull excess wires through hole of Lower Vertical Tube on stand and conceal inside bottom plastic Base Cover.
8. Plug 110AC power cord into AC outlet.
9. Plug screen control cable into controller.
10. Power On LCD screen and test functions

## Mounting Screen Controller

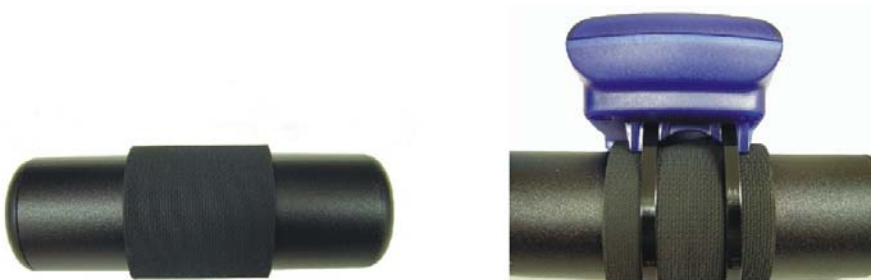


CNTE-4



CNTE-16

1. Remove backing from neoprene mounting pad and place either vertically or horizontally around equipment handrail as appropriate as shown below.
2. Insert two nylon wire ties (provided) through the bottom holes in the mounting bracket on the rear of the Screen Controller.
3. Attach wire ties as tightly as possible around the horizontal or vertical bar so the controller can't be rotated. This is very important to keep moisture out of the controller and to keep from damaging the electronics inside unit.



**NOTE:** Do not place controller where it would interfere with the cardio unit controls or display panel. The Screen Controller mounting bracket may be removed with pliers and mounted with Super Lock Velcro to any flat surface.

## Auto Programming TV Channels

The following requires the LCD Screen Master IR Remote Control Unit

1. Press menu button on Master IR Remote.
2. Scroll Down to "Install" then press "Select".
3. Select "Auto Search" and press "Select".
4. Select Cable, HRC or Air (Check local cable company for HRC)
5. Note: Programming may take up to 3 minutes.

### Manually Add or Erase Channels:

1. Manually select channel using Master IR Remote.
2. Press menu button on Master IR Remote.
3. Scroll Down to "Install" and then press "Select".
4. Scroll to "Store/Clear".
5. Select "Store" or "Clear"
6. Choose next channel and repeat.



## Cable Management System



The Optional Cable Management System is used to cover the antenna cable and power cords that run between the individual stands. It consists of a metal bracket that connects to the bottom of the monitor stand and a plastic two-channel extrusion that can be cut to length with common hand tools.

5 foot Cable Management extrusion.



Cable Management  
Mounting bracket



Bottom view of bracket  
mounted with four screws



### Installation Instructions

#### Step 1

After monitors are mounted to stands and the proper spacing between equipment has been determined, measure distance between stands and cut Cable Management extrusion to length.

#### Step 2

Remove Allen Head screw from plastic bottom cover of stand. Place mounting bracket over same hole and re-install the Allen Head screw.

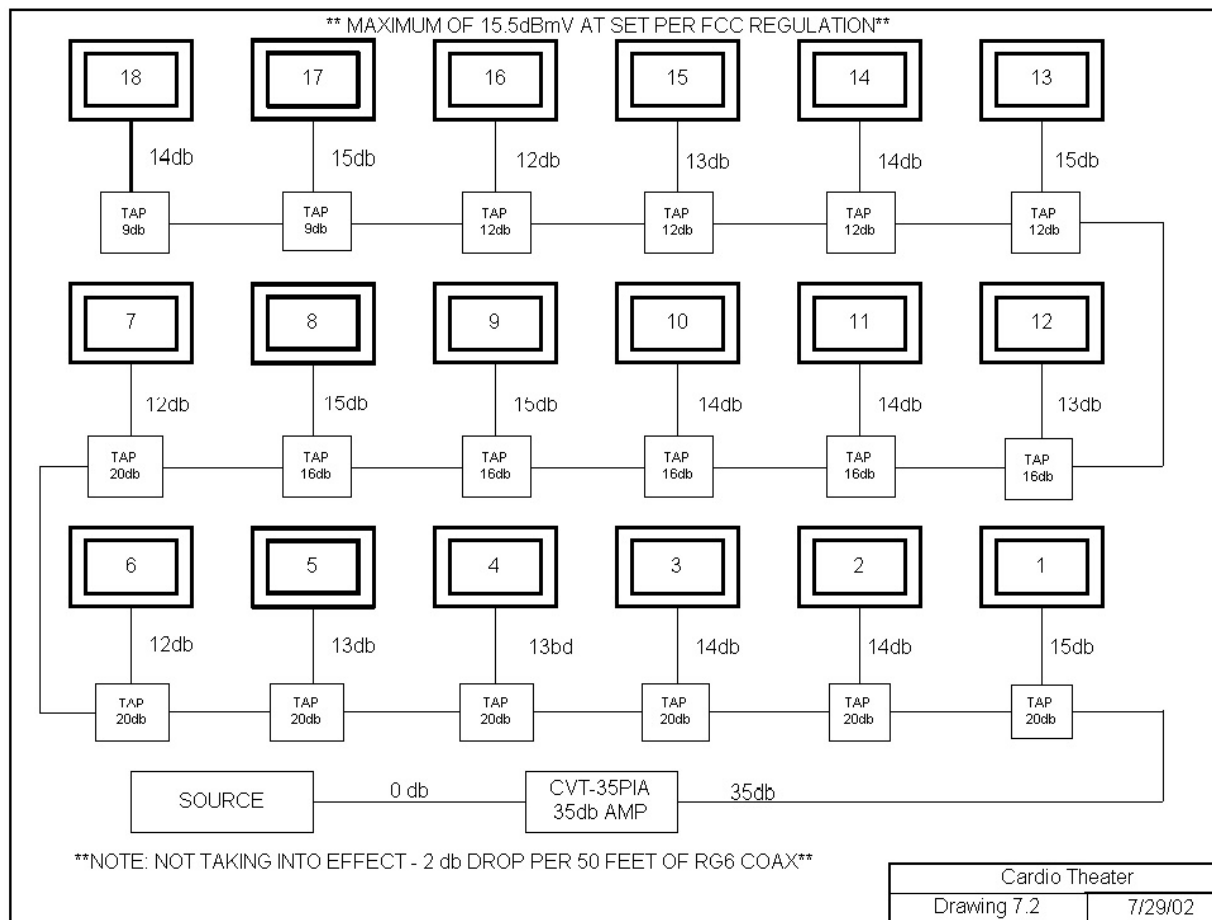
#### Step 3

Place Cable Management extrusion into end of bracket and install 4 self tapping screws, two on each side of bracket.  
Repeat on opposite side of extrusion.

# RF Distribution

Below is a diagram of a typical install. Please note that the tap values are dependant on having a 35 db signal at the output of the signal amplifier. It is best to use a quality amplifier that has a variable output so that you can adjust it to match 35 db even if your input is either lower or higher.

These tap values and db readings are based on RF theory.



# **Specifications:**

## **15" Color LCD Monitor**

Visible Screen Size	304.1(H) X 228.1(V)
Pixel Range	0.297(H) X 0.297(V)
Type	a-si TFT Liquid Crystal Display
Visual Angle	upper 55'/lower 65', left 70'/right 70'
Horizontal Frequency	31~60 KHz(Auto Set)
Vertical Frequency	56~75 Hz(Auto Set)
Display Color	16.2M Color
Input/Video Signal	Analog 0.714Vp_p Positive(75ohm)
TV Color System	PAL,SECAM,NTSC
Channel Memory	100 Channel—PAL System
Receiving Channel	181Ch (113ch CATV)—NTSC System
Video Input Color	PAL/SECAM/NTSC
Power Adaptor	Input :100~240V @.1A max – Output: 12Vdc@3A
Operating Temperature	0'C~40'C
Conditions Humidity	10%~85%

**DVD Player (Optional)**      Please see DVD Manual in DVD Box

## Warranty

Cardio Theater™ warrants the Personal Viewing System to be free from defects in material and workmanship for the following period of time from date of shipment, provided that the products have not been subject to mechanical, electrical, or other abuse or modifications.

Cardio Theater LCD Screen	1 Years Parts & Labor
Cardio Theater Screen Controller	1 Year Parts & Labor
Quick Change Headphone Jack	90 Days (from original installation)

Should the LCD Screen, DVD Player or Controller be deemed defective by Cardio Theater, a return authorization number will be issued. **Cardio Theater will not accept returns without a return authorization number.** Cardio Theater reserves the right, at their option, to repair or replace the equipment after verification of defect.

Equipment that fails after the warranty period expires will be repaired at the current price of part and labor after authorization from the customer. Repairs are warranted for 90 days.

This warranty is in lieu of all other warranties expressed or implied.

### FCC Compliance Statement

**NOTE:** This equipment has been tested and found to comply with the limits for Class B digital device, pursuant Part 15 of FCC Rules. These limits are designed to provide reasonable protection against harmful interference. This equipment generates, uses and can radiate radio frequency energy and, if not installed and used in accordance with the instructions, may cause harmful interference to radio communications. However, there is no guarantee that interference will not occur in a particular installation. If this equipment does cause harmful interference to radio or TV reception, please contact Cardio Theater Inc. for trouble shooting guidance.

#### DOC Class B Notice

This digital apparatus does not exceed Class limits for radio noise emission as set out in the Radio Interference Regulations of the Canadian Department of Communications.

The user is cautioned that changes or modifications not expressly approved by the manufacturer of the equipment could void the user's authority to operate the equipment.

**WARNING:** To Prevent Fire Or Electrical Shock, Do Not Expose This Appliance To Rain Or Moisture.



# **Technical Support**

## **Technical Support Numbers**

**Telephone** 1-800-776-6695

### **Technical Support Hours:**

6:00 AM to 5:00 PM Monday through Friday PST.

### **Write To:**

Cardio Theater Holdings, Inc.  
21420-D NW Nicholas Court #12-13  
Hillsboro, OR 97124

### **Notice**

Due to continuing advancements in technology, Cardio Theater Holdings, Inc. reserves the right to make changes in hardware, packaging, and any accompanying documentation without prior written notice.

Cardio Theater PVS and Cardio Theater Quick Change Headphone Jack are registered trademarks of Cardio Theater Holdings, Inc.

© 2003 Cardio Theater Holdings, Inc., all rights reserved



## Free Manuals Download Website

<http://myh66.com>

<http://usermanuals.us>

<http://www.somanuals.com>

<http://www.4manuals.cc>

<http://www.manual-lib.com>

<http://www.404manual.com>

<http://www.luxmanual.com>

<http://aubethermostatmanual.com>

Golf course search by state

<http://golfingnear.com>

Email search by domain

<http://emailbydomain.com>

Auto manuals search

<http://auto.somanuals.com>

TV manuals search

<http://tv.somanuals.com>