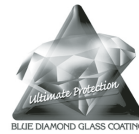


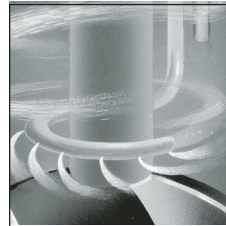
# PREMIER®

## Self-Cleaning™ Residential Gas Water Heaters



### Our most efficient residential gas water heaters -

A money-saving .63 Energy Factor is the result of 2" thick Foam Insulation, external Silencer™ Heat Traps and a "High Dome" internal tank design that maximizes heat transfer area.



### Self-Cleaning Turbo Coil Dip Tube -

features jet ports that direct incoming cold water to create turbulence that reduces sediment buildup in the tank. This Self-Cleaning action helps prolong tank life and maintain high energy-efficiency.

**Blue Diamond™ Glass Coating** - Provides ultimate protection... over twice the corrosion resistance compared to industry-standard glass lining.

**Long-Lasting PEXAN™ Dip Tube** - The Turbo Coil is made of PEXAN, a cross-link PEX polymer that can withstand long-term exposure to water temperatures up to 400° F.

**40,000 BTU input on all models** - Delivers more hot water and higher peak demand (first hour) output than less efficient 40,000 BTU gas water heaters.

**Green Choice™ Eco-Friendly Gas Burner** - Patented design reduces NOx emissions by up to 33%. Complies with southern California and Texas requirements.

**Easy-To-Light Piezo Igniter** - For fast "one hand" pilot ignition.

**Durable Tamper-Resistant Brass Drain Valve.**

**Factory-Installed Side-Mounted Temperature & Pressure (T&P) Relief Valve -**

Top-mounted T&P Valve available as option.

**Magnesium Anode Rod** - Helps protect against corrosion for longer tank life.

**C3 Technology™ Gas Water Heater Design** - See other side.

**10-Year Limited Tank and Parts Warranty**

**Code Compliance** - All models meet or exceed federal minimum energy standards effective January 20, 2004, according to latest editions of the National Appliance Energy Conservation Act (NAECA). They also comply with the latest editions of the B.O.C.A. National Codes, C.E.C., U.B.C., S.B.C.C., C.A.B.O. and the H.U.D. standards. All models design-certified by CSA International according to ANS Z21.10.1 standards governing storage-type water heaters.



For more information on State® contact:  
State Water Heaters  
500 Tennessee Waltz Parkway, Ashland City, TN 37015  
800-365-0024 Toll-free USA  
[www.statewaterheaters.com](http://www.statewaterheaters.com)

SRGSS01406

September 2007R

**SOLID.STATE.**



# PREMIER® Self-Cleaning™ Residential Gas Water Heaters



MODEL NUMBER	PEAK DEMAND OUTPUT (1st Hour Rating Gallons)	ENERGY FACTOR	GAL. CAP.	BTU INPUT PER HOUR NATURAL†	RECOVERY 90°F RISE GALLONS	R VALUE	DIMENSIONS IN INCHES						APPROX. SHIPPING WEIGHT (LBS.)
							A	B	C	D	E	F	

**TALL MODELS**

GPX 40 YXRT	81	.63	40	40,000	41	16	63-1/2	58	20-1/2	15-1/2	8	52-1/2	3 or 4	166
GPX 50 YXRT	97	.63	50	40,000	44	16	65	59-1/2	22	15-1/2	8	54-1/8	3 or 4	195

**SHORT MODEL**

GPX 40 YXRS	79	.63	40	40,000	43	16	56	50-1/2	22	15-1/2	8	44-3/4	3 or 4	165
-------------	----	-----	----	--------	----	----	----	--------	----	--------	---	--------	--------	-----

Recoveries are rounded to nearest gallon

Water Connections – 3/4" on all models

† Propane Gas – 36,000 BTU Input

When ordering Propane, change "Y" to "H" in model number (GPX 40 HXRT)

When ordering top-mounted T&P Valve, add "G" to model number (GPX 40 YXRT G)

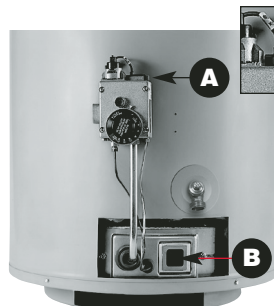
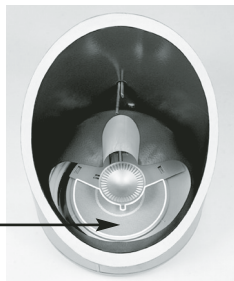
## Flammable Vapor Ignition Resistant C3 Technology™ Water Heaters

Corderite Combustion Containment (C3) design meets American National Standards Institute standards (ANS Z21.10.1) that deal with the accidental or unintended ignition of flammable vapors, such as those emitted by gasoline.

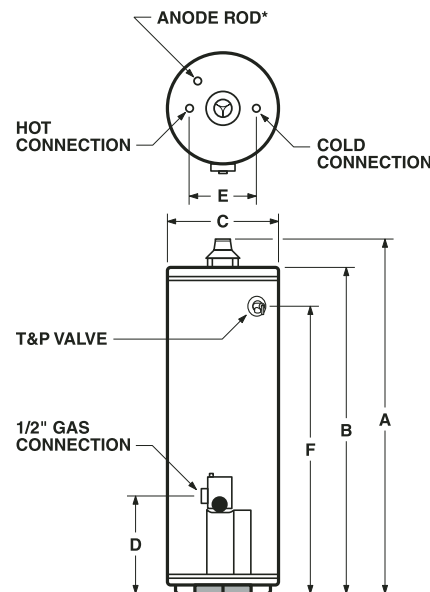
Covered by four U.S. patents, C3 Technology gas water heaters feature a sealed combustion chamber with air intake screen and a fireproof Corderite flame arrestor built into the water heater base. In addition, a Thermal Cutoff (TCO) device, integral with the thermocouple, is designed to shut off gas flow to the burner and pilot if poor combustion is detected.



In the unlikely event that flammable vapors accidentally enter the combustion chamber, the Corderite flame arrestor is designed so any flames burn off the top surface and cannot escape down through the arrestor.



- A. Easy-to-light Piezo Igniter
- B. View port for easy inspection of burner inside sealed combustion chamber



\*Location for optional top-mounted T&P Valve, if ordered from factory. To order, add "G" to model number (GPX 40 YXRTG).

For complete information on limited warranties, consult written warranty, or contact the State Customer Care Center, 1-800-365-0024.

State Industries, Inc. reserves the right to make product changes or improvements without prior notice.

For more information on State® contact:  
State Water Heaters  
500 Tennessee Waltz Parkway, Ashland City, TN 37015  
800-365-0024 Toll-free USA  
www.statewaterheaters.com

SOLID. STATE.



## Free Manuals Download Website

<http://myh66.com>

<http://usermanuals.us>

<http://www.somanuals.com>

<http://www.4manuals.cc>

<http://www.manual-lib.com>

<http://www.404manual.com>

<http://www.luxmanual.com>

<http://aubethermostatmanual.com>

Golf course search by state

<http://golfingnear.com>

Email search by domain

<http://emailbydomain.com>

Auto manuals search

<http://auto.somanuals.com>

TV manuals search

<http://tv.somanuals.com>