



PSD-SERIES

INSTALLATION MANUAL

PROJECTOR MOUNT MODEL

PSD-VHSA

Premier Mounts
Supplying the world with superior mounts

A DIVISION OF
PROGRESSIVE MARKETING PRODUCTS INC.

3130 E. Miraloma Ave. Anaheim, CA 92806 Phone: 800 368-9700 Fax: 800 832-4888

VISIT US AT WWW.PREMIERMOUNTS.COM

Introduction

This adjustable-height tabletop stand allows you to configure your plasma display either horizontally or vertically (on PSM series only). It mates directly with any of our PSM Series flat wall mounts. Constructed of dual heavy-gauge steel with a unique laser cut solid base plate, this adapter is both attractive and sturdy. It supports a heavy display at its center of gravity. Our floor stands DO NOT include mounts. You will need to order the appropriate PSM or CTM series mount for your plasma in order to complete the system.

Contents

- Safety & precautions
- PSD-VHSA diagrams
- Installing the height adapter (PP-SPA) adapter
- Measurements
- Securing the back plate

Safety & Precautions

WARNING Safety precaution measures must be practiced at all times during the installation of this product. Use proper safety gear and tools for the installations procedure to prevent personal injury or damage to the plasma displays or plasma mounts.

WARNING!

The floor or tabletop structure must be capable of supporting at least five (5) times the weight of plasma display. If not, the floor or tabletop must be reinforced. Proper installation procedure by qualified personnel as outlined in the installations instructions must be adhered to. Failure to do so could result in serious personal injury

The entire installation instructions should be fully read and understood, including all of the safety symbols and safety precautions, before beginning installation. The installation instructions should be read, understood and followed to prevent personal injury or property damage. Keep these installation instructions in an easily accessible location for future reference.



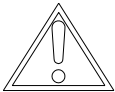
Indicates that the power plug is to be disconnected from the power outlet.



Contact Premier Mounts for any questions



Safety precautions must be taken at all times.



Warning and caution in general



A suitable floor or tabletop must always support the weight or load of the plasma. Always confirm the weight load of the installation structure before installing the PSD-VHSA stand.



Do not install in locations where there is vibration, movement or danger of impact. Failure to do so could result in plasma cracking or tipping over from the floor or tabletop causing damage to the plasma and injury.



Do not install near heater, fireplace, direct sunlight or air conditioning or any other source of direct heat energy. Failure to do so may result in damage to the plasma display.



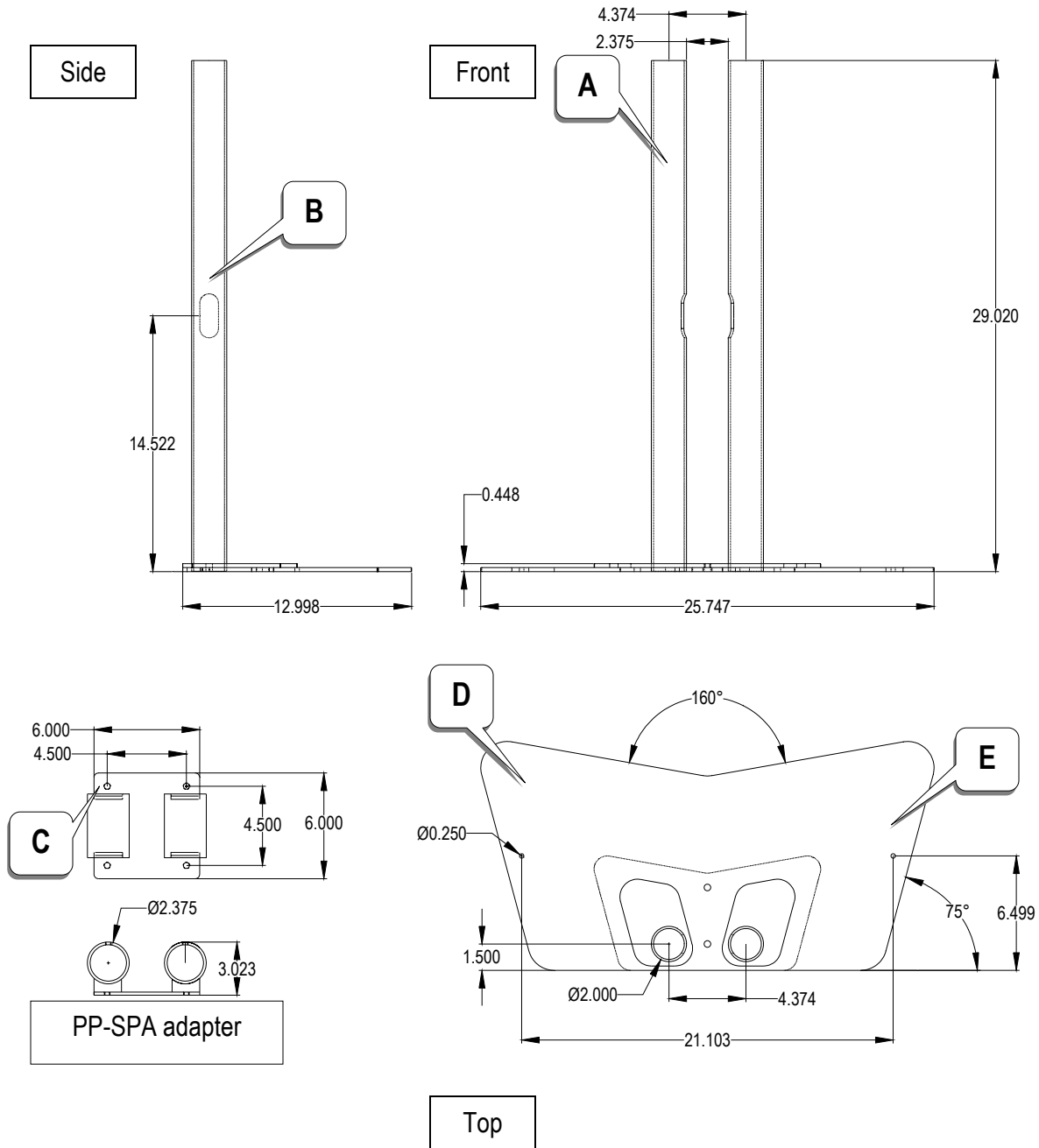
At least two qualified people should always perform the installation work. Injury and damage can result from dropping or mishandling the plasma display.

Mount Diagrams

PSD-VHSA

MATERIAL:
4 (ga) P & O base plate &
2" (dia) tubing
COLOR: Sinterflex

| | |
|---|---------------------------|
| A | 2" Tubing |
| B | Cable access point |
| C | PP-SPA Height adapter |
| D | Base plate |
| E | Table top mounting points |
| | |
| | |



Getting the plasma ready

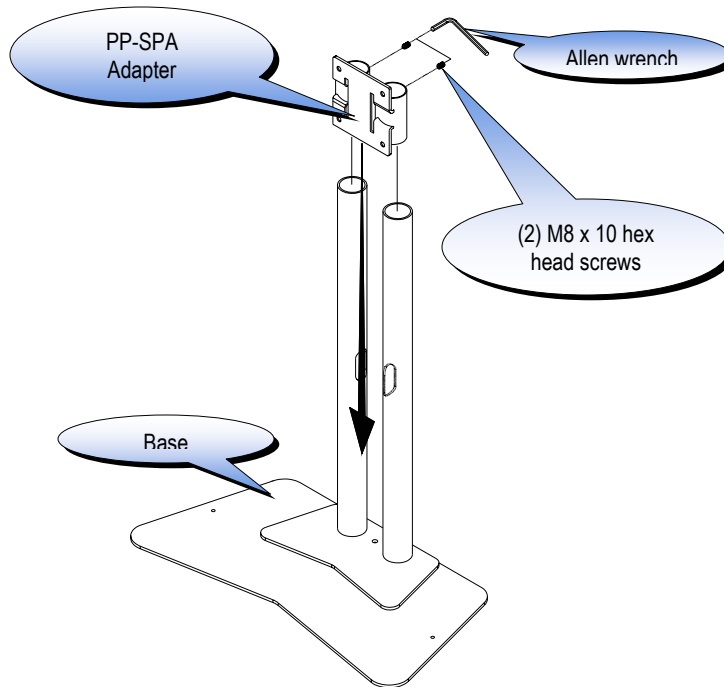
WARNING: Proper installation procedure by qualified personnel as outlined in the installation instructions must be adhered to. Failure to do so could result in serious personal injury and possible damage to the plasma display.

Step 1

NOTE: Refer to the PSM or CTM series installation instructions to secure the mounting bracket to the plasma display.

Set the PSD-VHSA on the floor and loosely install the PP-SPA adapter over the tubes flat side facing out, attach the two (2) M8 x 10 socket head screws to the adapter and slowly drop it to all the way until it touches the base. See figure 1.

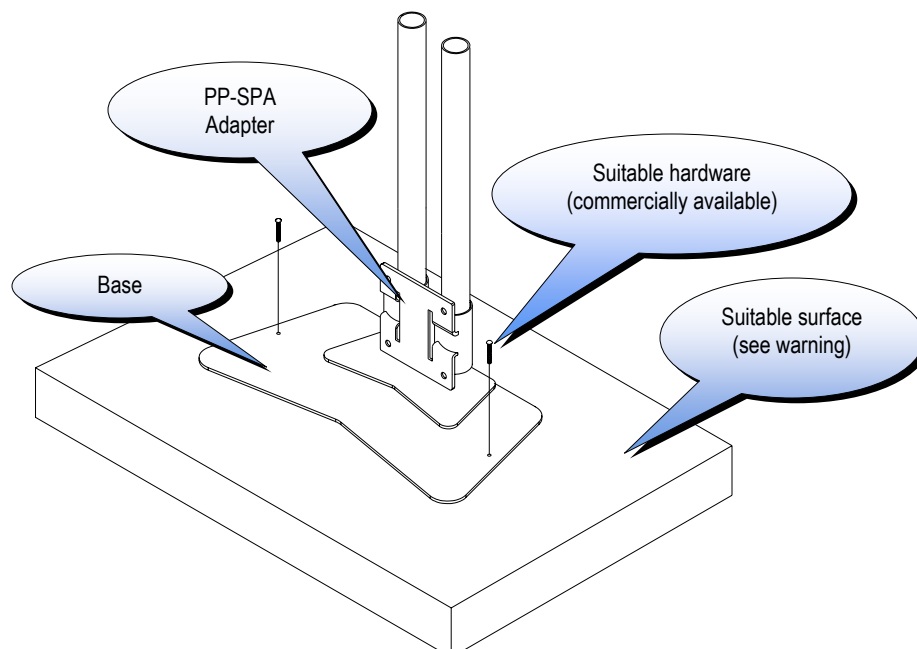
Fig 1



Step 2

Choose the proper location for the PSD-VHSA and make sure that the location is weight suitable (see warnings). Using (commercially available) suitable hardware depending on you installation environment the two holes found on the base may be used if needed to fasten the stand to the surface. See figure 2.

Fig 2

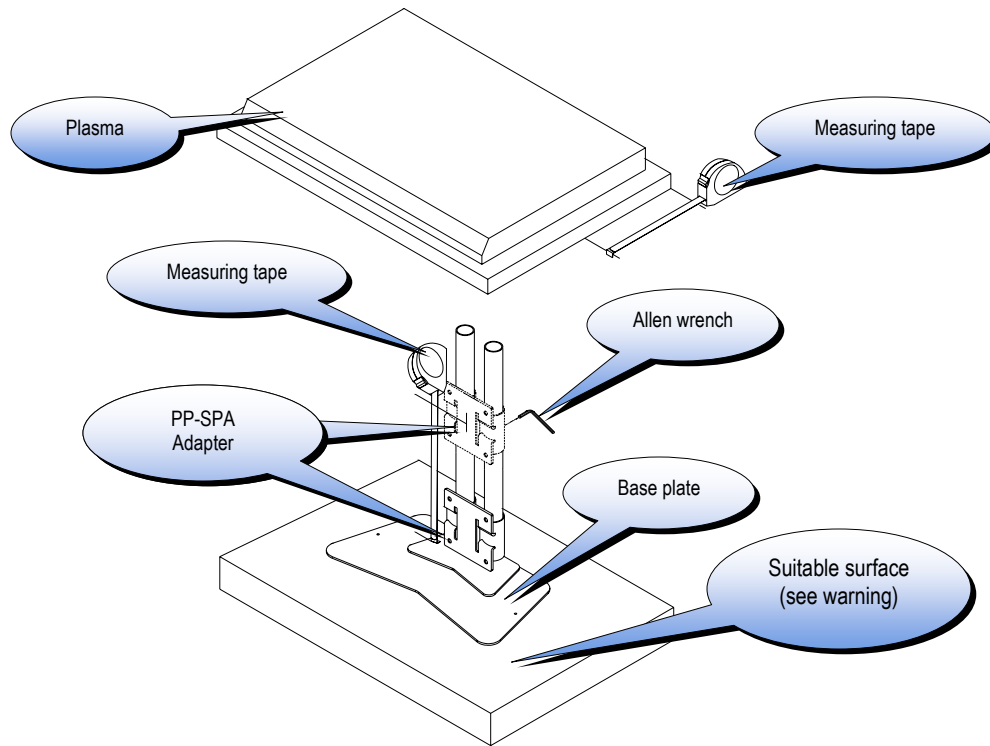


Measuring the plasma

Step 3

With the plasma display inverted measure and find the center of the plasma display. Measure from the top of the base plate to the center of the PP-SPA and lock the height by tightening the two (2) M8 socket head screws (supplied) to the poles.

Fig 3



Installing the wall plates

Step 4

CAUTION: The plasma display is very heavy two people are required to lift the plasma and secure it to the stand.

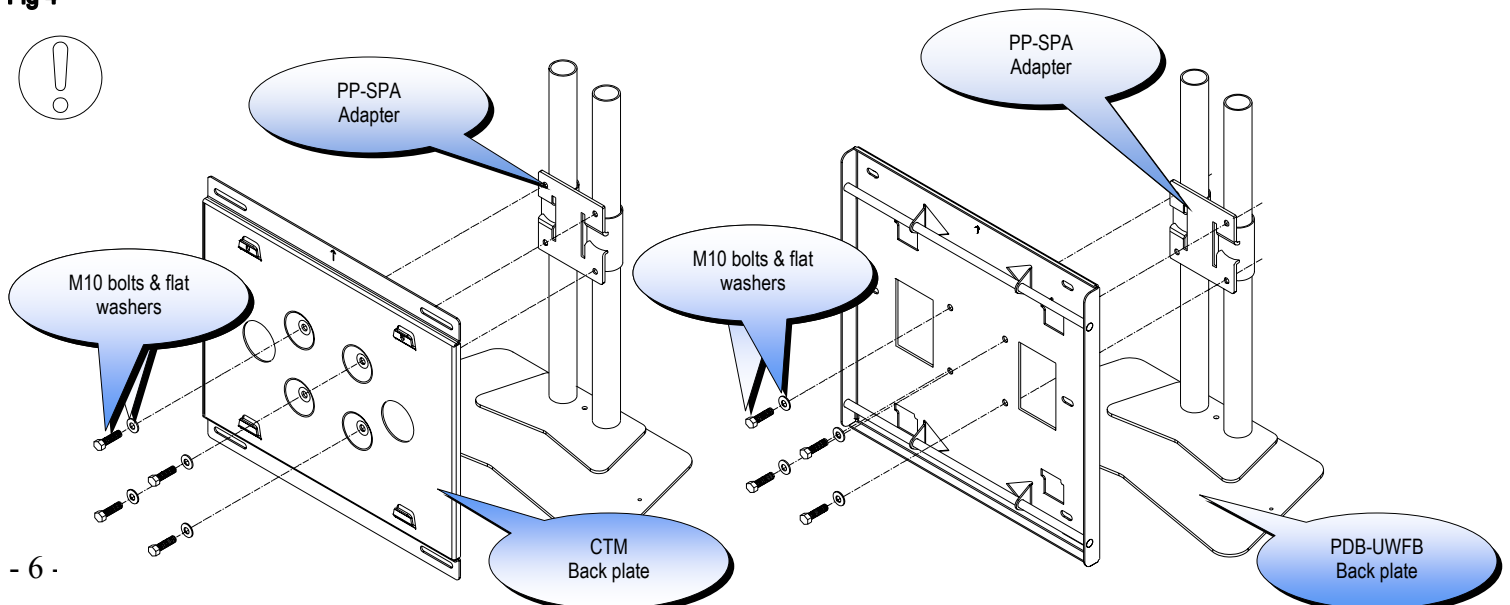
The following diagrams show the CTM and PCM series systems.

PSM-Series: Raise the plasma display with the mounting bracket secured to the plasma display and insert the four (4) tab openings from the PSM mount to the four (4) receiving tabs found on the PDB-UWFB back plate slide the plasma down, right and down again to lock the mounts together. Make sure all tab openings are interlocked with the receiving tabs before letting go of the plasma. Secure the brackets with the two (2) M6 x 12 (mm) Phillip screws (supplied).

CTM-Series: Raise the plasma display with the left and right brackets secured to the plasma and insert the bottom and top hooks from the mounting arms to the top and bottom rods found on the CTM back plate. Secure the mounting arms with the two (2) M6 x 12 Safety knobs (supplied).

CAUTION: The safety knobs MUST be used failure to do so may result in damage to the plasma or personal injury. See fig 4,5,6.

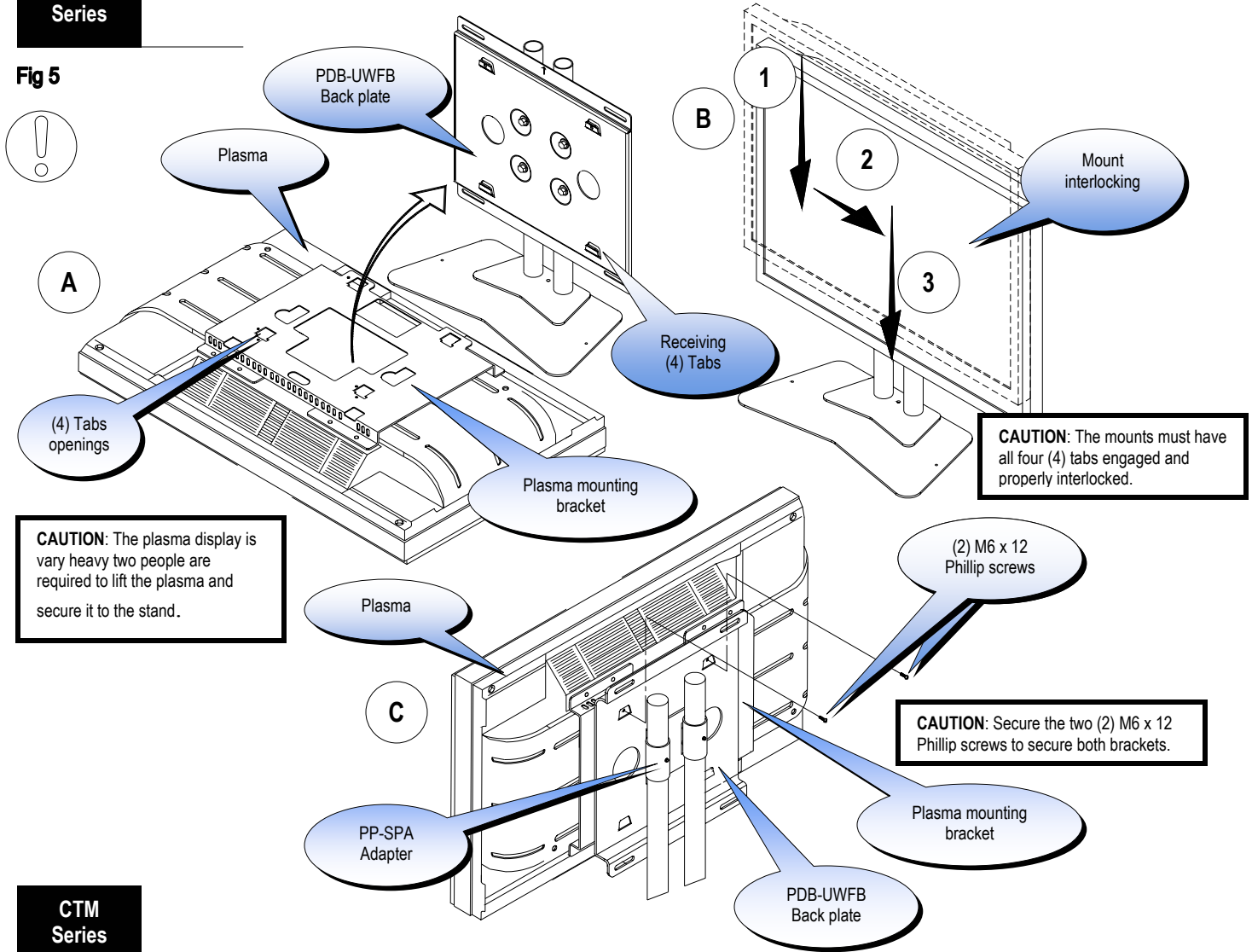
Fig 4



PSM Series

EXAMPLE PLASMA FOR ILLUSTRATION PURPOSES

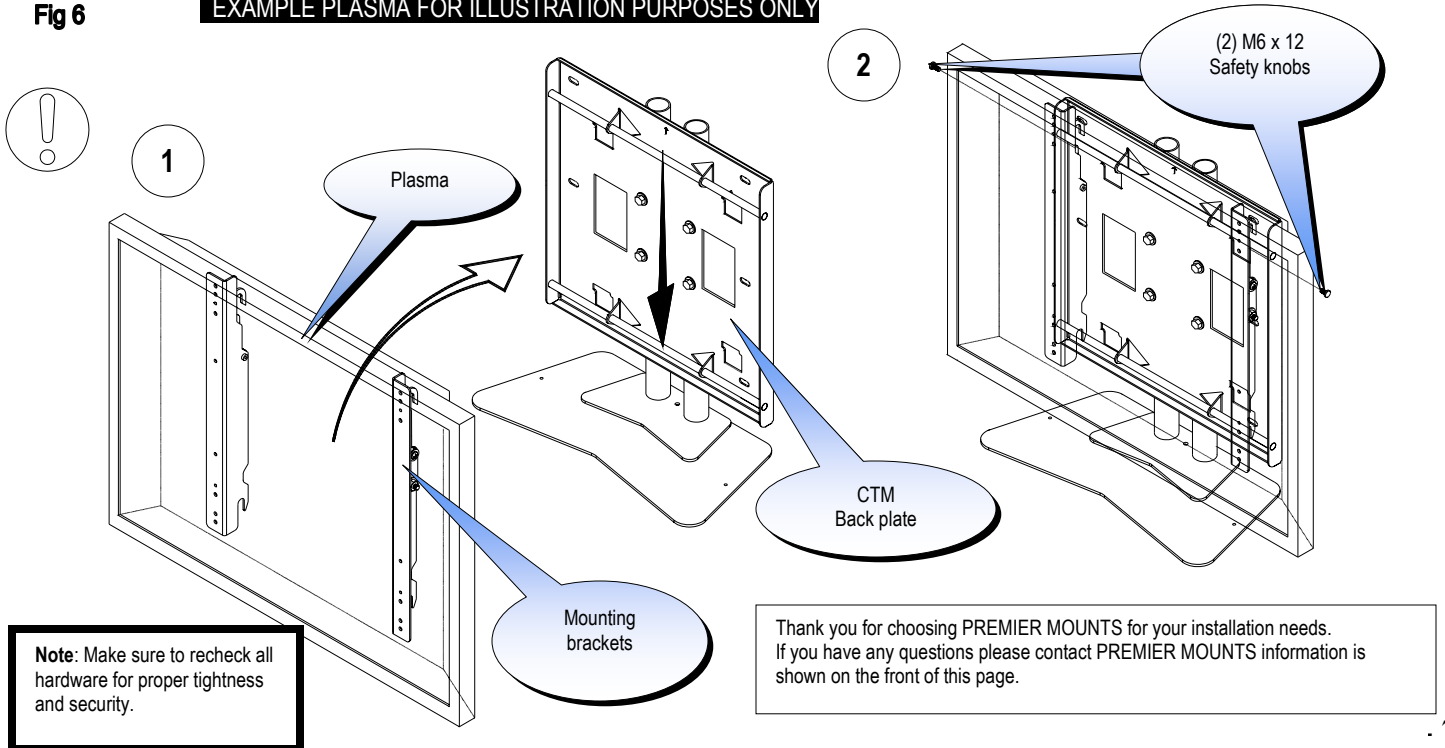
Fig 5



CTM Series

EXAMPLE PLASMA FOR ILLUSTRATION PURPOSES ONLY

Fig 6



Free Manuals Download Website

<http://myh66.com>

<http://usermanuals.us>

<http://www.somanuals.com>

<http://www.4manuals.cc>

<http://www.manual-lib.com>

<http://www.404manual.com>

<http://www.luxmanual.com>

<http://aubethermostatmanual.com>

Golf course search by state

<http://golfingnear.com>

Email search by domain

<http://emailbydomain.com>

Auto manuals search

<http://auto.somanuals.com>

TV manuals search

<http://tv.somanuals.com>