

Quick Start Guide

QT4 Series Network DVRs with H.264 Compression

- QT454 - 4 Channel DVR
- QT428 - 8 Channel DVR
- QT426 - 16 Channel DVR
- QT446 - 16 Channel DVR



IMPORTANT! This walkthrough will allow you to test your cameras and connections before you mount them.

Before You Get Started

A: Gather Your Components.

You will need:

1. A 19" or larger VGA PC monitor and VGA cable OR a television of any size.
2. A surge protector
We **STRONGLY** recommend that you use one that has the following specifications:
 - UL-1449 Rated
 - Clamping voltage of 330 or lower
 - Joule rating of at least 400
 - Response time of 10 nanoseconds or less
3. A power screw driver/drill to mount your cameras.

Your DVR can be controlled using the included USB mouse, remote control or the function keys on the front of the unit. For the purposes of this guide, we will be giving instructions using the mouse. Because this guide covers several models in the QT series of DVRs, components in photos may not exactly match those on your particular model.

B: Unpack the box...



Check the contents against the "What's in the Box" list that was packed at the top of your product. If you notice any damage or missing components, please contact Q-See Customer Support Specialists at **877-998-3440**.

Note:

This guide is intended to help you get your Q-See security system up and running. There are many additional features which can be customized to your specific needs. More information and instructions are available in the **User Manual** included on the CD that came with your system or available for download from our website at www.Q-See.com.

For information on how to configure your system for remote monitoring on the Internet or on your smartphone, please refer to the **Remote Monitoring Guide** also included on the accompanying CD.

Be sure to register your product!

Visit www.Q-See.com, click SUPPORT and then select the online registration form.

Complete the product registration form to receive warranty/technical support benefits and to be notified of product updates and free downloadable firmware updates to your DVR.

Connect the Devices

STEP 1 Turning on the DVR

1. Connect the power cable to the DVR
2. Connect the power adapter to the power cable.
- 3a. Plug the power cable into a surge protector
- b. QT428 and QT446 DVRs - Turn on the DVR using the power switch on the rear panel.

You will hear a beep as the DVR powers up.



STEP 2 Connect to a VGA Monitor or Television

OPTION A: Connecting a VGA PC Monitor

1. Plug the VGA cable into the port marked "VGA" on the back of the DVR.
2. Plug the other end of the VGA cable into the similar port on the back of the monitor.
3. Plug the monitor's power cable into the surge protector.



OPTION B: Connecting a Television

1. Connect the BNC-to-RCA cable to the "Video Out" port on the back of the DVR.
2. Plug the RCA end into the "Video In" port on the television.
3. Plug the television's power cable into a surge protector.
4. Press and hold the ESCAPE button on the front of the DVR for 10 seconds or until you hear a beep to indicate that the video mode has been changed.



STEP 3 Connect Mouse

Plug the mouse into the port labeled "USB" on the rear of the DVR.

NOTE: the USB port on the front of the DVR is used for backing up video files.

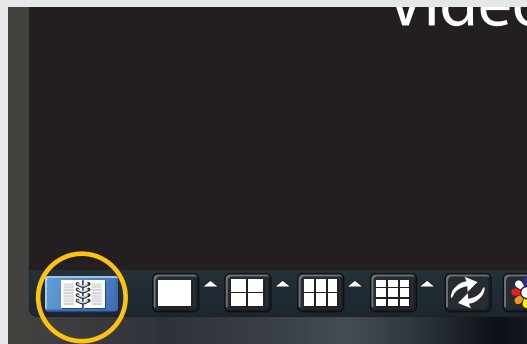


Initial Set Up

IMPORTANT! You must follow these steps to enter the current date and time in order to effectively use the video search function described at the end of this guide.

STEP 4 Open Control Bar

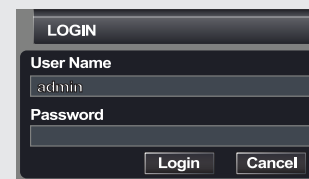
1. Right-click the mouse anywhere on the screen to bring up the **Control Bar** at the bottom of the screen.
2. Click on the **Menu** icon.



STEP 5 Log In

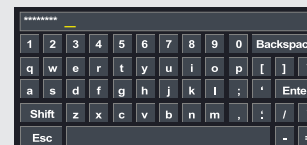
1. You will be asked to log in before proceeding.

A. To enter numbers or characters, click the appropriate field and a virtual keyboard will appear. Symbols can be accessed through the use of the **SHIFT** key.



User Name: admin
Password: 123456

B. Input the required text and hit the **ENTER** key.

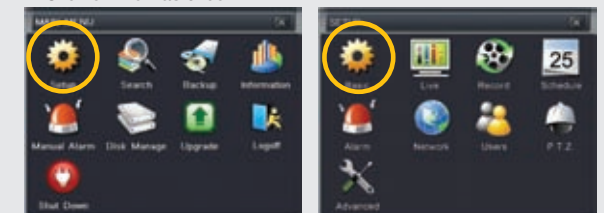


Refer to the **User's Guide** if you wish to change this password at a later time.

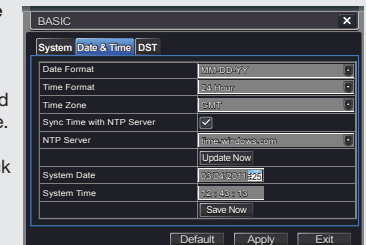
STEP 6 Set Date and Time

After logging in, the **Main Menu** will open.

1. Click on the **Setup** icon to open the **Setup Menu**.
2. Click on the **Basic** icon.



3. Select the **Date & Time** tab. Click in the appropriate field and use the virtual keyboard to enter the date, time, and formats you wish to use.

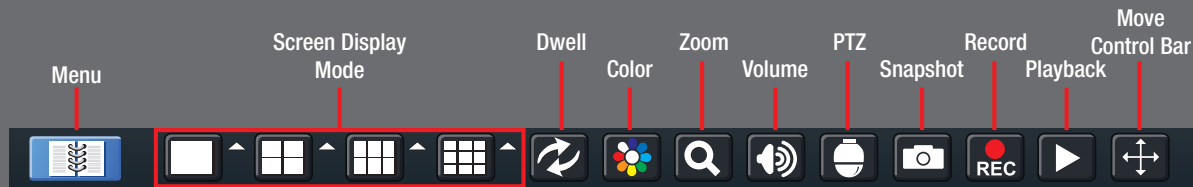


To save your settings, click on **APPLY** and the **EXIT**.

NOTE: If you wish to change your language at this time, you can do so in the **System** tab. You will have to re-log in afterwards.

Control Bar Click on any icon to use that feature.

The basic functions of the Control Bar are listed to the right. Each function is covered in more detail within the manual.



To hide the control bar, right-click again.

Menu: Opens the Main Menu.

Screen Display Mode: Choose the number of screens you wish to view simultaneously. Channels without attached cameras will display "Video Loss." Clicking on the upward pointing arrows to the right of each icon will allow you to select which channels to view in that mode.

Dwell: Enable/disable the automatic cycling between channels.

Color: Adjust brightness, hue, saturation and contrast for any channel.

Zoom: Available in single screen display mode, this digitally enlarges a section of the display. Click and drag to move within the video image.

Volume: Adjust volume. This is only applicable if you have attached a microphone or audio-capable camera to the DVR.

PTZ: Controls optional Pan-Tilt-Zoom cameras.

Snapshot: Captures a still image from all channels.

Record: Begin manual recording on all channels.

Playback: Switches to Playback mode and brings up the Playback Control Bar.

Move Control Bar: Reposition the Control Bar anywhere on the screen.

Camera Set Up

STEP 7 Connecting the Cameras

1. Connect the BNC and power leads on the camera to the matching connectors on the power and video cable.

NOTE: The male power end fits into the matching power lead on the camera.

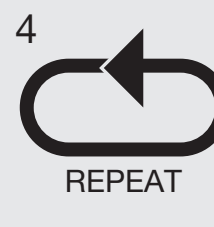
2. Connect the BNC connector on the other end of the cable to any of the Video In ports on the back of the DVR.

3. Plug one of the power leads on the power splitter into the power lead on the power and video cable.

4. Repeat for each camera included with this package to ensure proper connection and function.

5. Connect the single end of the power splitter to the power adapter.

6. Plug the power adapter into a surge protector. You should now see a live video feed from each of your cameras.



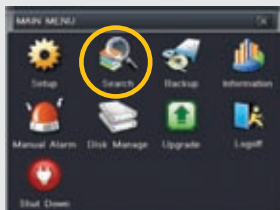
You may now mount your cameras.

Operation

STEP 8 Playback and Search

1. Return to the Main Menu as described in Step 6, above.

2. Click on the Search icon.



3. This DVR is default configured to record on motion detection.

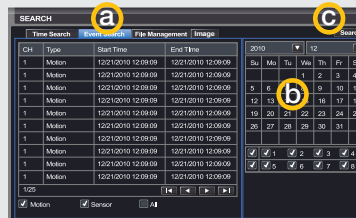
To view these recordings:

a. Select the **EVENT SEARCH** tab.

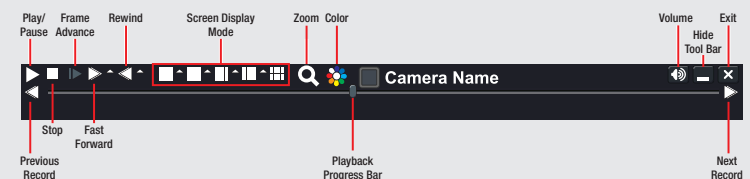
b. Select the date you wish to search.

c. Click the Search button.

You will be presented with a list of recorded events.



4. Double click on the event you wish to review and it will begin replaying. The **Playback Control Bar** will appear below the video, allowing you to control the playback. It operates like a standard video player.



Free Manuals Download Website

<http://myh66.com>

<http://usermanuals.us>

<http://www.somanuals.com>

<http://www.4manuals.cc>

<http://www.manual-lib.com>

<http://www.404manual.com>

<http://www.luxmanual.com>

<http://aubethermostatmanual.com>

Golf course search by state

<http://golfingnear.com>

Email search by domain

<http://emailbydomain.com>

Auto manuals search

<http://auto.somanuals.com>

TV manuals search

<http://tv.somanuals.com>