



# QSD32824-250 User's Manual



**Contact US:**

**Q-See Products**

8015 E. Crystal Dr  
Anaheim, CA 92807

**Website:**

<http://www.q-see.com>

**Customer Service:**

Phone:877-998-3440 x 538

Email:cs@dpsi-usa.com

**Tech Support:**

Phone:877-998-3440 x 539

Email:ts@dpsi-usa.com

**Fax:**

714-998-3509

Rev 042109



---

## TABLE OF CONTENTS

|  |    |
|--|----|
| 1. INTRODUCTION .....                    | 2  |
| 2. DVR FEATURES.....                     | 2  |
| 3. PHYSICAL UNIT .....                   | 3  |
| <b>3.1 Front Panel</b> .....             | 3  |
| <b>3.2 Rear Panel</b> .....              | 3  |
| <b>3.3 Remote Control</b> .....          | 4  |
| 4. GETTING STARTED.....                  | 5  |
| 5. HARDWARE SETUP .....                  | 6  |
| <b>5.1 Hard Drive Installation</b> ..... | 6  |
| <b>5.2 Monitor Connection</b> .....      | 6  |
| <b>5.3 Camera Connection</b> .....       | 7  |
| <b>5.4 Mouse Connection</b> .....        | 7  |
| <b>5.5 DVR Power Connection</b> .....    | 8  |
| 6. SETUP.....                            | 8  |
| <b>6.1 Camera</b> .....                  | 10 |
| <b>6.2 Record</b> .....                  | 11 |
| <b>6.3 Alarm</b> .....                   | 13 |
| <b>6.4 Screen</b> .....                  | 15 |
| <b>6.5 System</b> .....                  | 15 |
| 6.5.1 Hard Drive Setup .....             | 16 |
| 6.5.2 Account Setup.....                 | 17 |
| 6.5.3 Password Setup.....                | 18 |
| 6.5.4 Clear Account Info .....           | 18 |
| 6.5.5 Keypad Tone.....                   | 19 |
| 6.5.6 Time Set.....                      | 19 |
| 6.5.7 Event List .....                   | 19 |
| 6.5.8 Firmware Upgrade .....             | 20 |
| <b>6.6 Language</b> .....                | 20 |
| <b>6.7 Logout</b> .....                  | 20 |

|  |    |
|--|----|
| <b>6.8 Exit</b> .....  | 21 |
| <b>7. PLAYBACK WITH TIME SEARCH FUNCTION</b> .....                       | 21 |
| <b>8. BACKUP via USB Flash Drive</b> .....                               | 22 |
| <b>9. RECORDING LENGTH</b> .....   | 23 |
| <b>10. PLAYING BACKED UP VIDEO FILES ON PC</b> .....                     | 23 |
| <b>10.1 Installing File Player</b> .....                                 | 23 |
| <b>10.2 Program Interface</b> .....                                      | 24 |
| <b>10.3 Button Functions</b> .....                                       | 24 |
| <b>11. APPENDIX</b> .....  | 29 |
| <b>11.1 QSD32824 4CH DVR series - compatible USB Flash Drives.</b> ..... | 29 |
| <b>11.2 Specifications</b> .....   | 30 |
| <b>11.3 DVR Accessories (included)</b> .....                             | 31 |
| <b>11.4 Q-SEE Product Warranty</b> .....                                 | 31 |
| <b>Customer Information Card</b> .....                                   | 32 |

## 1. INTRODUCTION

The QSD32824-250 system provides a total 4-channel digital video security surveillance system supporting duplex (simultaneous playback and record) functionality.

You can use front panel buttons, remote control unit or mouse to operate all DVR menu settings.

The functionality of each access option is exactly the same.

## 2. DVR FEATURES

- True Duplex Functionality: Simultaneous Play/Record.
- PAL/NTSC Options.
- High Quality Color Video at 50fps (PAL) or 60 fps (NTSC) Recording/Playback (shared by cameras).
- Display Resolution: PAL 704\*576; NTSC 704\*480.
- Recording Resolution: PAL 640\*288; NTSC 640\*240.
- Recording Speed: PAL max. 50 fps (Quad); NTSC max. 60 fps (Quad) shared by cameras.
- Recording Mode: Continuous, Motion Detection, Time Schedule.
- Up to 8 days continuous recording at 30 fps setting with 250GB HDD.
- USB port for file backup to USB Flash Drive Avg. 200KB/Sec.
- Motion Detection and Video Loss Alarm Function.
- OSD (On Screen Display): Supports multiple languages.
- Power Recovery Auto-record Function.

**Note: We STRONGLY recommend that you plug the DVR and cameras into a Transient Voltage Surge Protector (UL-1449 rating). Look for a clamping voltage of 330 or lower, Joule rating of at least 400, and a response time of 10 nanoseconds or less.**

## 3. PHYSICAL UNIT

### 3.1 Front Panel



- IR Remote Receiver
- LED Light

(a) GREEN (PWR): The DVR unit is powered up and running.

(b) RED (HDD): System is in Recording Mode or in Playback Mode.

Some DVR is provided with touch-tone front panels. A series of buttons on the DVR front panel operates the system's basic functions, such as recording, playback, fast-forward, reverse, etc. For more details about the DVR menu, refer to "[6. SETUP](#)".

The front panel key functions are the same as on the remote control (refer to "[3.3 Remote Control](#)").

### 3.2 Rear Panel



- VIDEO OUTPUT

Use this port to connect DVR to the monitor.

- VIDEO INPUT

Use these BNC ports to connect cameras to DVR system. You might need BNC adapter for each (CH1-CH4) camera connection if the camera cables have RCA connectors.

- USB PORT

Use this port to attach USB cable to backup to PC hard drive or attach USB Flash Drive.

- AC-DC POWER ADAPTER JACK

Connect the power adapter into DVR and plug the power cable into the wall.

---

[Input: AC 100-240V, 50/60Hz, 1.5A / Output: DC +12V == 3A]

- PS/2 MOUSE PORT

Use this port for PS/2 mouse connection. If you have USB port mouse, use USB - PS/2 adapter to connect with this port.

- Fan

### 3.3 Remote Control

The buttons on the DVR remote control unit operates the system's basic functions, such as recording, playback, fast-forward, reverse, etc. For more details about the DVR menu, refer to "**6. SETUP**".



(1) CH1↑

Use this button for full screen display for channel 1 on the monitor or move the cursor up.

(2) CH2↓

Use this button for full screen display for channel 2 on the monitor or move the cursor down.

(3) CH3←

Use this button for full screen display for channel 3 on the monitor or move the cursor left.

Also user can press this button to reduce value when adjusting parameters.

(4) CH4→

Use this button for full screen display for channel 4 on the monitor or move the cursor to the right.

Also user can press this button to increase value when adjusting parameters.

(5) Quad

Use this button for full screen quad display on the monitor screen. If you push this button, DVR will display all 4 channels (cameras) at the same time in quad screen.

(6) • (REC)

Press "REC" button to start manual recording. Then you will see this mark on the selected channel of the screen, which means that the channel is now recording.

To stop manual recording, press "REC" again during recording mode.

(7) ■ (STOP)

---

To stop playback, press the “STOP” button.

(8) ► (PLAY)

After recording, press “PLAY” button to start video playback.

Playback will start with the oldest unread video data and then continue playing.

(9) ►► (FWD)

This is the fast forward button. To play the recorded video faster, press the “FWD” button.

There are three levels of fast forward playback speed.

(a) FF 1 (►►) : Play two times faster (2x) than the normal play.

(b) FF 2 (►►►) : Play three times faster (3x) than the normal play.

(c) FF 3 (►►►►) : Play four times faster (4x) than the normal play.

To change the fast forward play back speed level, press the “FWD” button again.

(10) ◀◀ (REW)

This is the rewind button. To play the recorded video backward, press the “REW” button.

**[NOTE]:** The fast forward and reverse playback speeds will vary depending on the frame rate and record quality settings, as well as the number of channels recorded.

(11) || (PAUSE)

To pause the video playback, press the “PAUSE” button. Then the video display will be stopped.

To continue playback, push the “PLAY” button.

(12) Menu / ESC

It displays menu options or will go the previous screen.

(13) UP / DOWN

To change a menu field, use the “UP” or “DOWN” buttons.

(14) Select /Enter

Use this button to change values on main menu or sub menu setting. Also use can use this button to increase value when adjusting parameters.

## 4. GETTING STARTED

Connect DVR to a TV or monitor.

Connect cameras (up to 4) to DVR.

If you are using a Mouse it must be connected to DVR before you startup system.

Connect the power adapter to the DVR this will turn on the DVR.

Make sure that a hard drive and camera(s) are properly installed.

Start TV Monitoring and Recording.

After installation of hard drive, the hard drive must be fixed tight enough with screws.

If the power is turned off while recording (i.e. a power failure), the DVR will enter "Power Recovery" mode at start up, detect that it has been shut down, and then re-initiate the recording process.

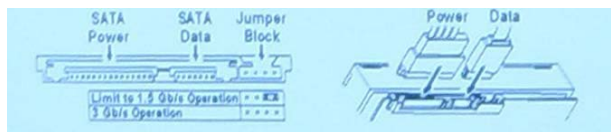
## 5. HARDWARE SETUP

### 5.1 Hard Drive Installation

This model uses an internal SATA hard drive, and comes with a 250GB hard drive pre-installed.

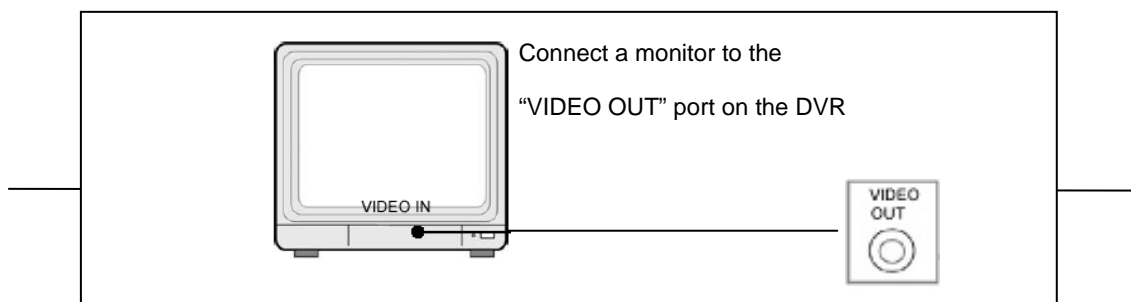
If you want to install a larger hard drive you would need to remove the cover of the DVR, remove the power and data cables from the existing drive and unscrew it from the base, then screw in the new hard drive and attach the power and data cables to it.

Connect the cables as follows:



### 5.2 Monitor Connection

To display video image from cameras on the monitor, the DVR's video output signal needs to be transferred to your TV set or monitor.

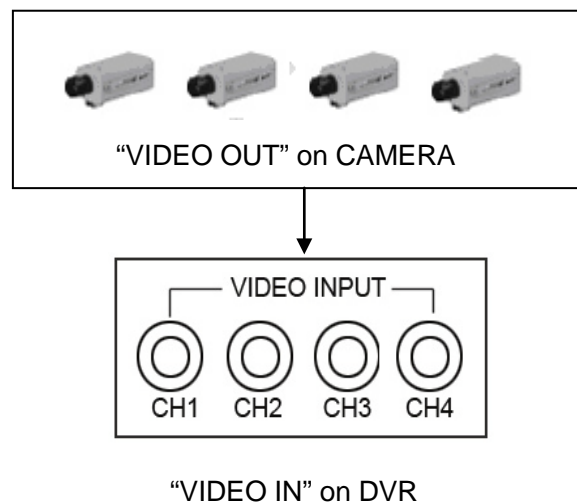




Connect "VIDEO IN" of the monitor to "VIDEO OUT" of the DVR system using the BNC to RCA cable that comes with the DVR.

### 5.3 Camera Connection

Connect the included video cables to the "VIDEO IN" of your DVR and "VIDEO OUT" of the camera with video cable and plug in the camera's power adapter to the power feed of the video cable near the DVR.



### 5.4 Mouse Connection

If you use a PS/2 mouse connect it to the port below on the system. A PS/2 Mouse must be connected to DVR before startup system. You can also use a USB mouse with a PS/2 Adapter, or attached to the USB port.



[PS/2 Mouse Port]

## 5.5 DVR Power Connection

Connect the DVR power adapter to the adapter jack at the rear panel of the DVR unit.

It will boot up the system.

If users install a new hard drive, it will ask you to format the hard drive before the system starts to run (**Below Fig**). Choose format option by pressing the “PLAY” button.

```

4CH DVR
FW:1.1.8 UCODE:32
Compile date: 2009/02/25

Video: PAL
Disk0: 190782MB ST3200826A
New disk
Disk1: None
Disk configuration changed
[PLAY] change configuration
Disk0: press [PLAY] format, [STOP] cancel
Format...OK

[STOP] to pause

```

Below is the information of input/output voltage for the power adapter:

Input: AC 100-240V, 50/60Hz, 1.5A

Output: DC +12V == 3A

## 6. SETUP



After installing a new hard drive on the system, user needs to format the hard drive first. The system opens to the login window, there are three password levels in the

system, including **admin** (highest), **operator**, and **guest** (lowest). **If the user does not login to the system, he can only view live video display. And when the user logs into the system, if he doesn't operate the system within one minute the system will logout automatically.**

The system allows up to four user accounts. The administrator can set up the login name, password and level for each user. The administrator can also add or delete users as he wants to. (Please refer to Section [6.6.2](#) for Account Setup.)

The **admin** can operate everything. The **operator** can operate anything except examining user accounts, formatting hard drives and modifying his password level. The **guest** can operate live video display and image playback, or modify some parameter values that are independent of recording. If user does not have the right to modify the parameter value, there will be an identifier “⊖” on top right corner of the screen.

**A: Mouse Control**

After system boot-up, hold the right mouse button and the login window will open. Hold the left mouse button to select the “Account”, and input correct account. Then left click the “Password” option and input correct password. Then left click “Login” to enter system. There is one factory-preset login “**account/password**” “**admin/111111**” at **admin** level. The user can use it to login to the system for the first time.

After system boot-up, hold the right mouse button and there will be option menu on the monitor (Fig (a)).



Fig (a)

Menu options in Fig (a):

- |  |   |
|--|---|
|  Channel 1 view   |  Channel 2 view                            |
|  Channel 3 view   |  Channel 4 view                            |
|  All channel view |  Manual recording or Stop manual recording |

▶ Play record list

☰ Menu option

👤 Logout

⇌ Channel auto sequence. The icon “⇌” won't display if the order of “auto sequence” is “OFF”.

Move the mouse up or down to move the cursor. Click a left mouse button to change the settings. Click a right mouse button to go back to the previous.

Hold the left mouse button to click the icon “☰”. You will see the screen below on the monitor (Fig (b)).



Fig (b)

### B: The DVR Front Panel or Remote Control

After system boot-up, Press the “MENU” button on the DVR front panel or remote control and there will be a login window. There is one factory-preset login “**account/password**” “**admin/111111**” at **admin** level. The user can use it to login to the system for the first time.

After logging in to the system, press “MENU” button to make any changes to the DVR settings and you will see screen on the Menu options on the monitor as Fig (b). Then press the “UP” or “DOWN” key on the DVR front panel or remote control to move the cursor. Press “SELECT” button on the front panel or remote control to change the settings. In the MAIN MENU, the cursor “▶” will be shown on the screen right next to each sub menu. To return to the previous screen, press “MENU” button on the front panel or remote control.

## 6.1 Camera

Use this option to adjust the color for each channel (1,2,3,4). Go to DISPLAY for the option

to enable or disable each camera appearing on the screen display. Under the camera name option you can change the name of each channel if you want to.



## 6.2 Record



Use this option to enable recording on the channel (1,2,3,4). Only selected channels will be recorded no matter how many camera channels are displayed on the screen.

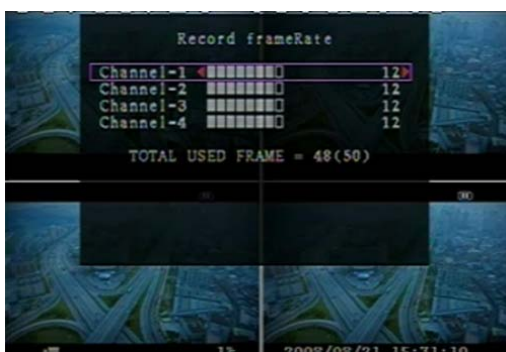
### A: [RECORD FRAMERATE]

Set the recording frame rate for each channel.

The higher the recording frame rate, the more natural movement you will see while playback.

You can set each channels frame rate independently.

For PAL video output format, system default



value is **12** frames per second with each channel, which means the system will record 48 frames per second with all channels. User can set frame rate as **3~25** frames per second with each channel. The max value of total frames per second with all channels is **50** frames. For NTSC video output format, system default value is **15** frames per second with each channel, which means the system will record 60 frames per second with all channels. User can set frame rate as **3~30** frames per second with each channel. The max value of total frames per second with all channels is **60** frames.


Press [SEL]/[CH4] button or hold the left mouse button to click icon “▶” to increase the recording frame rate for each channel. Press [CH3] button or use a left mouse button to click “◀” icon to decrease the recording frame rate for each channel.

If you set the recording frame rate to off, the channel will not record.

## **B: [RECORD QUALITY]**

Choose record quality setting among 1 / 2 / 3. The best record quality is 3, and the lowest record quality is 1. The higher the record quality is, the higher the video image quality is when you playback. Higher quality requires more hard drive space. Record frame rate, record quality and available hard drive space will determine total recording time for the DVR system.

## **C: [RECORD SCHEDULE]**

**Notice:** To start motion record, make sure the period that you intend to record is labeled “” in the “record schedule” menu.

Press 「Up」 / 「Down」 button or move the mouse to move the prompt, then press 「SEL」 or hold a left mouse button to adjust video record method during each time period. User can also adjust the same record method during for entire time periods at the same time by



pressing the [QUAD] button on the DVR front panel or remote control, or using the left mouse button to click the time period 24.

- **Grey bar:** No recording will be made for this time period unless user activates manual recording.

- **Red bar:** The time period with a red bar will continuously record (Time record) unless you manually stop recording during that time.

- **Green bar:** The system will record whenever motion is detected. (See the following chapter "MOTION DETECTION")

### 6.3 Alarm



#### A: [BUZZER DURATION]

It sets the buzzer duration time (in seconds) after an alarm is activated.

Value options are: "05, 10, 15, 20, 25, 30, CONT, OFF" (in seconds). Default is "OFF".

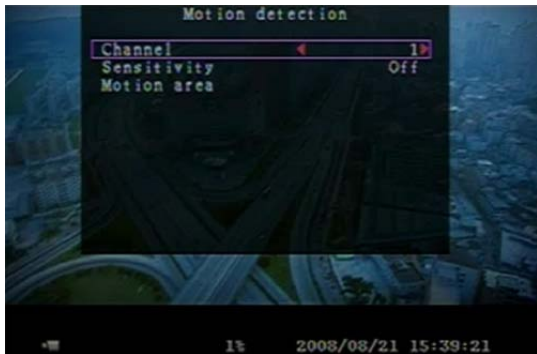
When "buzzer duration" is "cont", the buzzer

will sound continuously.

#### B: [EVENT REC DURATION]

This option sets the length of time (in seconds) recording continues after a motion recording event ends.

Value options are: "05, 10, 15, 20, 25, 30" (in seconds).

**C: [MOTION DETECTION]****[CHANNEL]**

Select the channel or channels (1,2,3,4) that you want to record when motion is detected.

**[SENSITIVITY]**

You can adjust the sensitivity of the built-in motion sensor on the DVR system. The higher the number, the higher the sensitivity is.

Values are "1, 2, 3, 4, Off". The maximum sensitivity level is 4.

**[MOTION AREA]**

Use this option to select the size of the area that you want to be sensitive to motion.

Use the keypad button, remote control button or mouse to assign the area.

The keypad and mouse control instructions are below.

**[Using keypad or remote control button]**

Press [SEL] once to pick the area, press [SEL] twice to cancel the area.

CH1 - Up / CH2 - Down / CH3 - Left / CH4 - Right

**[Using Mouse button]**

While holding a left mouse button, move the mouse to select, deselect or reselect the motion detection area for recording.

The area only can be selected from up to down and from left to right. When the block is covered by blue shadow, it's active to record. When the block is transparent, it will not be recorded.

After completing the motion area setting, press "MENU" button or use the right mouse click button to exit.

Before starting Motion Recording, user must complete the "Motion area" setup.



## 6.4 Screen

### [BORDER]

User can make the white borderline around each channel appear or disappear by setting this option to “on” or “off”.

### [AUTO SEQUENCE]

This option is used to setup the channels to appear one at a time on the screen in automatic sequence, and select the time that each channel appears on the screen before switching to the next channel.



Values are “Off, 1 to 10 seconds”. Default is “Off”.

### [VIDEO ADJUSTMENT]


You can move the entire video screen up, down, left and right using this option.

Keypad usage on the front panel or remote control is below.

Use CH1 for up, CH2 for down, CH3 for left, CH4 for right.

Mouse function is below:

Use the right mouse click button, this will display the following icons on the screen:

“  ”. Use a left mouse button to click each icon to select.

- “▲” for up, “▼” for down, “◀” for left, “▶” for right, “ESC” for ESC.

## 6.5 System



Fig (c)



Fig (d)

In this menu, you can see the information of the hard drive installed in the DVR, change the system password, adjust keypad tone, access browser event list or adjust current time on the system.

If user logs into the system at **admin** level, the menu bar will be displayed as Fig (c). The user can enter into the “**account**” option to examine all user accounts, and add or delete users (Please refer to section “6.6.2” for account setup).

If user logs into the system at operator or guest level, the menu bar will be displayed as Fig (d). The user can only modify his own password. (Please refer to section “6.6.3” for password setup)

### 6.5.1 Hard Drive Setup

#### [OVERWRITE ENABLED]



If you choose Yes, recording continues and overwrites previous recording when hard drive is full.

If you choose No, the recording stops when the hard drive is full. It won't record until reformat or replace the hard drive.

#### [FORMAT HDD]

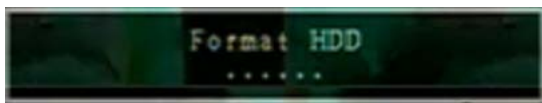
If you format the hard drive, all the video data stored on the hard drive will be deleted. The system has no restore option once the hard drive is formatted.

When you choose this option, it will ask for a password before formatting. The default

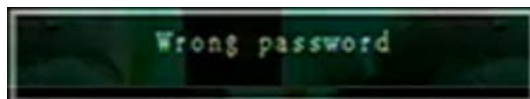
password is "111111". Type the password and press any key button.



When HDD is formatting, and has successfully formatted, you will see the message below blinking.



If the password is incorrect, you will see the below message blinking. Then try to enter the right password again.



### 6.5.2 Account Setup

| Account | Password | Level |
|---------|----------|-------|
| admin   | *****    | admin |
|         |          |       |
|         |          |       |
|         |          |       |

Only Administrator can log into the Account Setup Menu, the Account Setup allows the administrator to add new users, delete existing ones and modify the user's name/password/and level. The system allows up to 4 user accounts.



[\[Account\]/\[Password\]](#)

In setup Menu display, move the cursor to change the highlighted option to Account, and then press [SEL] button to display Account/Password as shown. All numbers, letters and signs in the pane



can be used as user account or password. Press 「SEL」 to input value, and move the prompt to the “Enter” option press 「SEL」 to confirm.

Use CH1 for up, CH2 for down, CH3 for left, CH4 for right, Press “Shift” for change characters.

[Level]

Move the cursor to change the highlighted option to Level, and then press [SEL] to adjust user level (**operator/guest**).

### 6.5.3 Password Setup



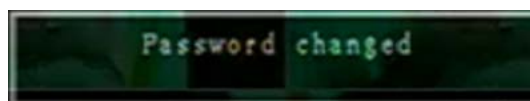
The default password is 111111. All numbers, letters and signs in the pane can be used in passwords. Press 「SEL」 to input value, and move the prompt to the option of “Enter”, press 「SEL」 to input current password.

Button function on the front panel or remote control:

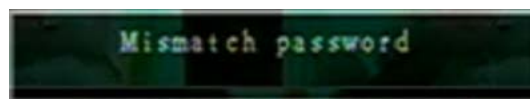
Use CH1 for up, CH2 for down, CH3 for left, CH4 for right.

Use the same operation procedure to input new password and confirm password.

When password is changed successfully, user will see the below message:



When password change has failed, user will see the below message:



### 6.5.4 Clear Account Info

If you choose ON, the account information will be cleared when you logout of the system. If

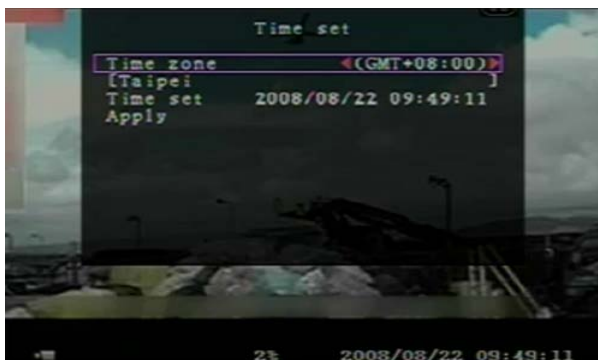
you choose OFF, the account information will be kept when you logout of the system.

### 6.5.5 Keypad Tone

Set the keypad tone to "ON" or "OFF" to enable or disable keypad tone during operation.

### 6.5.6 Time Set

You can adjust the current time, date and year at any time by region. Set your region first and set the current time so that the video back-up data can be played with the correct time



displayed.

Date and Time format are below.

\*\*\* 2008/08/08 - year/month/day

\*\*\* 01:01:00 - hour: minute: second

To move the cursor on the screen, use "UP" and "DOWN" key on the DVR front

panel or remote control and then press "SELECT" button to change the numeric value. Once you finish setting the time, press "MENU" button. Then press "DOWN" key and "SELECT" button to apply the new time set. Or move the mouse to move the cursor up and down, use the left mouse click button to change the numeric value. Once you finish time setting, use the right mouse button to return. Then move the mouse to "Apply" and left click to apply the new time set.

### 6.5.7 Event List



The Event list function enables playback by event. On the Event list menu, it shows all past recorded video, start time and end time of each recorded video, showing recording year/date/time in list. The HDD can store 300 events in it at most. If the events are over 300 items, user can play

previous event according to input time period if the data hasn't been over-written.

To playback by Event list, using [UP]/[DOWN] or channel number (CH3 for Page Up or CH4 for Page Down) key on the front panel or remote control, select the event that you want to playback and press "PLAY" button. Another way is to move the mouse up and down or click the left mouse button ("◀" for Page Up or "▶" for Page Down), select the event that you want to playback and double click the left mouse button. Then it will playback the recorded video data.

### 6.5.8 Firmware Upgrade

This menu is for upgrading the firmware of the DVR system through the USB port using a USB flash drive; you can upgrade the system once you connect the USB flash drive that contains a firmware file.

- [CAUTION]:**
1. Do not turn off the system while the system is upgrading. Otherwise, it will cause the breakdown of the system that will require a special recovery process.
  2. If there is no hard drive installed in the DVR, the system can't be upgrade.
  3. In order to upgrade the system you must stop recording.

### 6.6 Language

Our system supports multiple language OSD (On Screen Display). It includes two types of language systems (western and eastern). The language used is based on user's requirements.

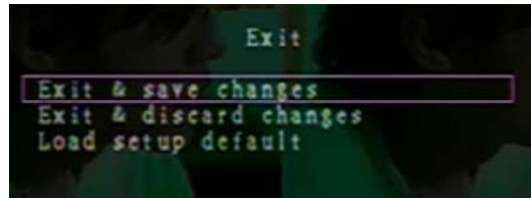
On the "Language" menu, you can move the cursor to change it by pushing the "SELECT" button on the front panel or remote control, and you can also use the mouse by single left-clicking to select the language.

### 6.7 Logout

User can use this option to log out of the system.

## 6.8 Exit

After you change settings on DVR menu, you need to confirm the changes under the EXIT menu.



[EXIT & SAVE CHANGE]

Save change and go back to main screen.

[EXIT & DISCARD CHANGES]

No change and go back to main screen.

[LOAD SETUP DEFAULT]

Load default settings.

## 7. PLAYBACK WITH TIME SEARCH FUNCTION



This is an enhanced playback option, which enables the user to manually select a specific starting time for playback.

[\[Keypad Control\]:](#)

In order to playback using time search function, press the "PLAY" button on

front panel or remote control. Then press "SELECT" key to change the value of the playback date and start time and press "PLAY" button again. The playback will start from the date & time indicated by the user.

[\[Mouse Control\]:](#)

Use the right mouse button and left click the icon "▶", And then press the left mouse button

to change the value of the playback date and start time, then press the right mouse button. Then use the left mouse button to click "Search", the playback will start from the date & time selected by the user.

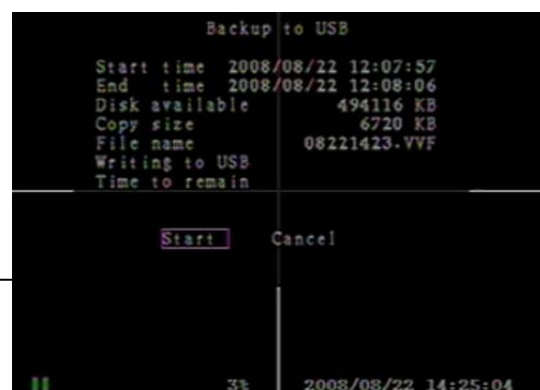
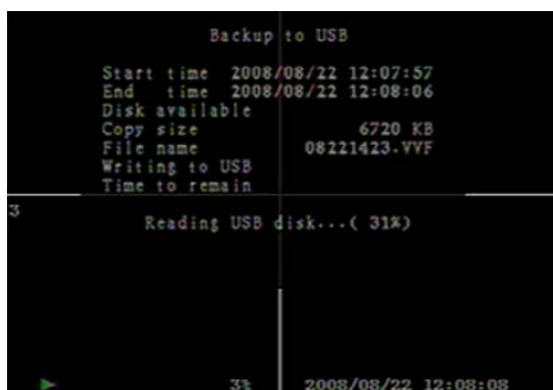
## 8. BACKUP via USB Flash Drive

Our 4-channel DVR system has an enhanced back-up feature so that it's possible to transfer the video files recorded on the hard drive to USB flash drive.

Before you back up a stream of video data, have the USB flash drive formatted and ready before attaching it to the DVR system.

In order to save the video data to these back-up devices, you should first start with playback. Then press "MENU" button. Use "UP" key or "DOWN" key to move the prompt, then press "SELECT" button to set the start time and the end time of the recorded video data that you want to save to the flash drive. If you want to setup the end time faster, you can press the button [▶▶FWD] to change the play speed that you want, and then press [DOWN] to select end time again.

Move the prompt to "USB copy", and press "SELECT" button or click the left mouse button to back up a stream of video data to the USB flash drive.



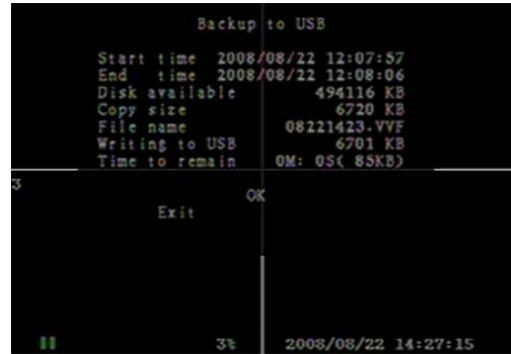
22



It will take a few minutes to copy the video data onto a USB flash drive. The file size number is going up until it's done while displaying the messages below:

WRITING...

Then it will show the following message on the screen:



FIXATING...

Take out the USB flash drive and attach it to your PC when it's done.

Press "PLAY" button to continue on the system.

To view the video files saved on back-up devices on the computer, you need to use the software provided with this package.

## 9. RECORDING LENGTH

Using Video System "NTSC". Estimated record time basing on 250GB HDD:

The best record quality is 3, and the lowest record quality is 1.

| Record Speed | REC Quality | DATA RATE (GB/Hour) | Record Time (Hour) |
|--------------|-------------|---------------------|--------------------|
| 60F/Sec      | 3           | 4.1                 | 61                 |
|              | 2           | 3.2                 | 78                 |
|              | 1           | 2.3                 | 108                |
| 30F/Sec      | 3           | 2.0                 | 125                |
|              | 2           | 1.6                 | 156                |
|              | 1           | 1.2                 | 208                |

## 10. PLAYING BACKED UP VIDEO FILES ON PC

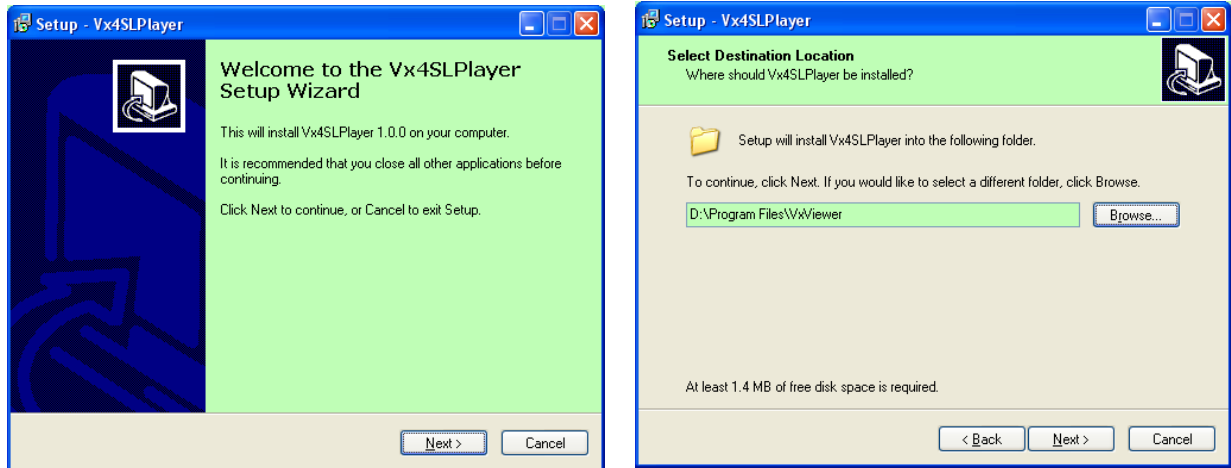
### 10.1 Installing File Player

Put the software installation CD in your CD-ROM.


Select setup option.

Set up the install directory.

Execute: Start >Program> Vx4SLPlayer.



## 10.2 Program Interface

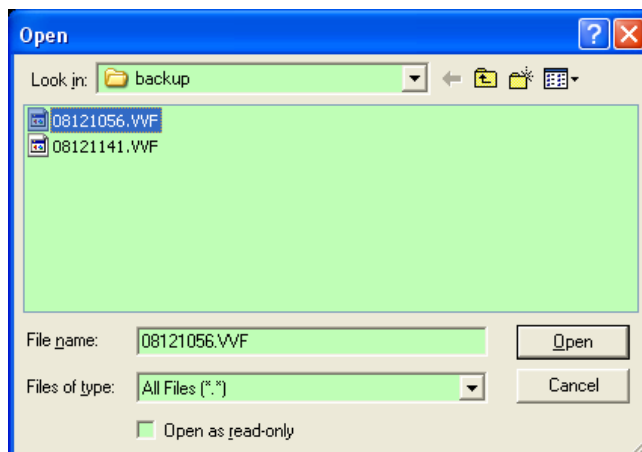
Double click icon “  ” on desktop to run the program.




## 10.3 Button Functions



1) Click “” to play the video recorder in “\*.VVF” format.

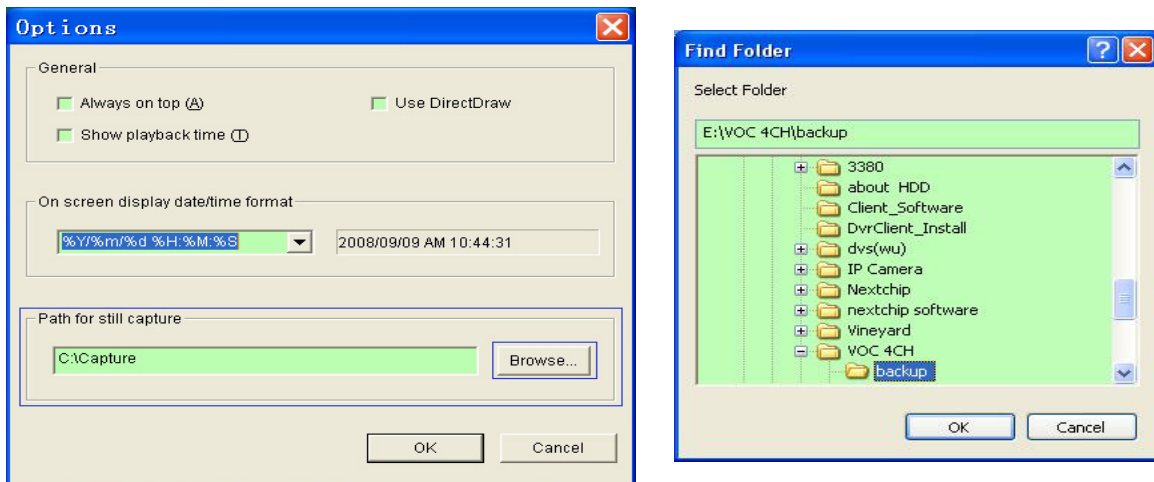


## 2) Still Capture

Click “” to capture single frame. Click the right mouse button to select “Options...” to

- |                         |                        |
|-------------------------|------------------------|
| 1. Open File            | 2. Fast Reverse        |
| 3. Rewind               | 4. Previous Frame      |
| 5. Pause                | 6. Next Frame          |
| 7. Play                 | 8. Fast forward        |
| 9. Still Capture        | 10. Split 1            |
| 11. Split 4             | 12. Volume Scroll Bar  |
| 13. Mute On/Off         | 14. Playing Scroll Bar |
| 15. Minimize the window | 16. Close the window   |

setup path to save image. Click the left mouse button to select folder that you want to save to, for example select the folder as “E:\VOC 4CH\backup”.



3) In “Options” window, you can setup other menu selections such as “General & On screen display date/time format”.

- ☐ Always on top (A): The client window will always display on top of all the windows.
- ☐ Use DirectDraw: Show the run dialog to your graphic card.
- ☐ Show playback time (I): The playback time will display on screen during play back.

On the menu selection “On screen display date/time format”, you can adjust the date/time format displayed on screen.

4) Press the keyboard “F1” or click the right mouse button to select option “About Viewer F1”, you can see the current version of the program.

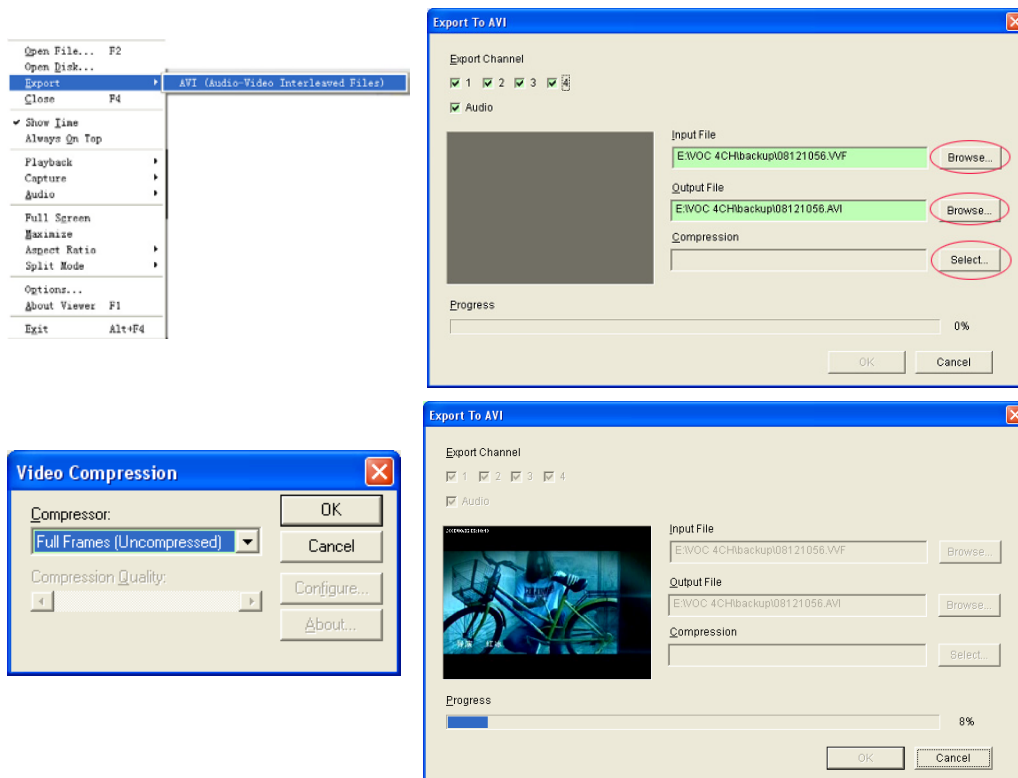


5) Translate “VVF File Format (\*.VVF)” into “AVI File Format (\*.AVI)”.

As shown in the below illustrations, first click the right mouse button to select the option “Export”, and then click the left mouse button which will display the window “Export To AVI”. Next select the channels you want to export; Since this model does not have audio ports the



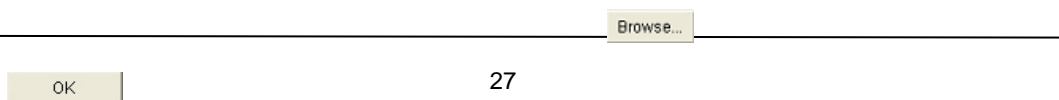
audio option is not available. Next click “ ” to select input file and output file, and click “ ” to select video compression mode. Finally click “ ” to start, and progress will be showed as a percentage.



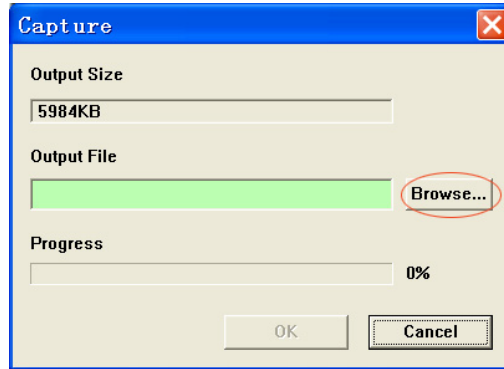
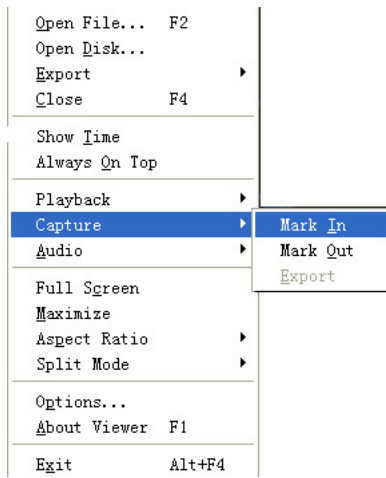
- Notes:**
1. When selecting video compression mode, user should test the compression that he selects to see if it is matching his computer. If it doesn't match the computer may not be able to play the file.
  2. Since this model does not have audio in ports the audio option is not available.

## 6) Capture

If you want to save a file in VVF file format (\*.VVF) on your computer, you must make sure the playback view is in pause state. Drag playing scroll bar to select start time, click the right mouse button to select the option “Capture”, then left click “Mark In”. Drag playing scroll bar ahead to select end time, click the right mouse button to select the option “Capture”, then left click “Mark Out”. Last left click “Export” and there will be a window “Capture” on screen.



The "Output Size" is the size of output file. Left click " " to setup save path. Then left click " ".



## 11. APPENDIX

### 11.1 QSD32824 4CH DVR series - compatible USB Flash Drives.

In case noise occurs on USB line due to a variety of reasons such as power noise, it might cause an error during the data transferring process. In this case, it requires re-transferring the data to the flash drive. If the device can process things normally in these exceptional cases, things are okay. However, in some cases, it doesn't operate normally.

For example, in case of a PC, it might not cause any problem under this kind of situation because it is immune to these types of problems. However, in case of our products, they often work better with some drives compared to others. These are the flash drives we recommend based on our testing.

#### WORKING DEVICE LIST

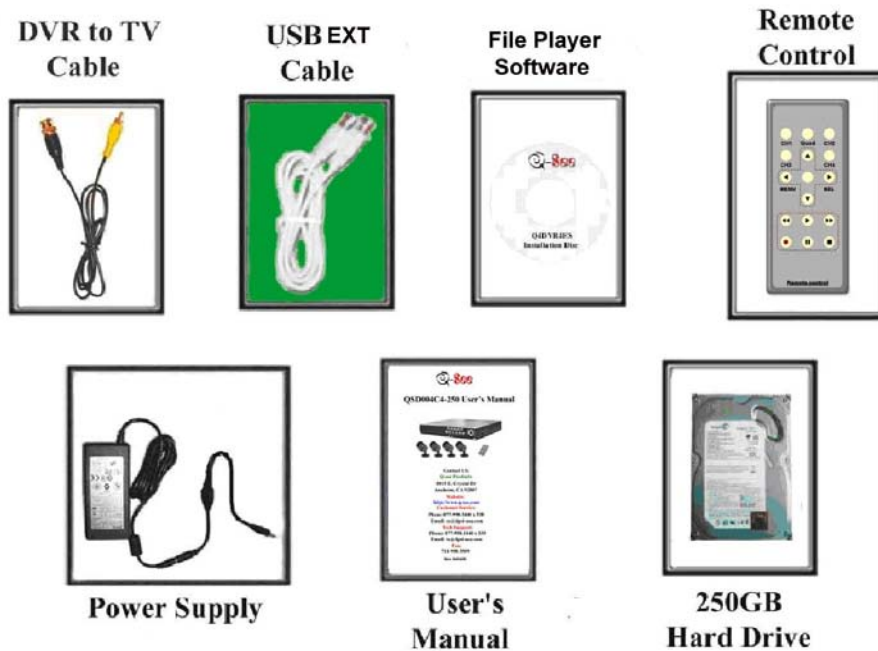
| MAKER     | MODEL                   | SIZE |
|-----------|-------------------------|------|
| SONY      | MICROVAULT (SOK-USM1GJ) | 1GB  |
| SAMSUNG   | SUM-LCB1                | 1GB  |
| TRANSCEND | JF V30                  | 2GB  |
| APACER    | Weblink (SYE5003358)    | 2GB  |
| SANDISK   | CRUZER micro            | 4GB  |
| FLEX      | FD-02                   | 1GB  |
| KINGSTON  | Data Traveler           | 2GB  |
| KINGSTON  | Data Traveler           | 1GB  |
| LEMON     | LEMON USB Drive         | 1GB  |

## 11.2 Specifications

| ITEM                    | 4CH DVR   |  |
|-------------------------|---|--|
| Video Format            | NTSC / PAL  |  |
| Operation System        | Linux   |  |
| Video Input             | 4 channel Composite BNC   |  |
| Video Output            | 1 channel Composite BNC   |  |
| Display Speed           | PAL: 100fps (4*25fps);<br>NTSC: 120fps (4*30fps);   |  |
| Recording Speed         | PAL: Max. 50 frame per second;3fps~Max 25fps(each channel adjustable);<br>NTSC: Max. 60 frame per second:: 3fps~Max.30fps (each channel adjustable) |  |
| Compression Method      | Enhanced M-JPEG   | Video Quality: Low@13kBytes;<br>Normal@16kBytes;<br>High@26kBytes. |
| Recording Mode          | Manual, Motion detection, Time Schedule   |  |
| Recording Time          | Up to 8 days continuous recording at 30fps with 250GB HDD   |  |
| Hard Drive Capacity     | Up to 1.0 TB SATA interface HDD×1   |  |
| USB port                | File backup (Flash Drive) and software upgrade  |  |
| PS/2 Mouse              | PS/2 mouse and USB mouse with adapter   |  |
| 38KHZ IR Remote Control | Yes   |  |
| Power Input             | 100-240VAC/DC 12V, 3A   |  |
| Dimension (LxHxW)       | 10 x 8.5 x 4.75 in (250 x 218 x 42 mm)  |  |



### 11.3 DVR Accessories (included)



### 11.4 Q-SEE Product Warranty

Thank you for choosing our products.

All of our products users have a conditional free warranty repair service for hardware within 12 months starting from purchase date, and a free exchange service within one month (valid for manufacturing defects). Permanent upgrading service is provided for the software.

#### Liability Exclusions:

Any product malfunction, abnormalities in operation or damage caused by following reasons are not within the free service scope of our company. Please select payable service.

- (1) Equipment damage caused by improper operation
- (2) Improper environment and conditions in/on which the equipment operates, e.g., improper power, environment temperature, humidity and lightening strike etc. that cause equipment damage.
- (3) Damage caused by acts of nature: earthquake and fire etc.
- (4) Equipment damage caused by the maintenance of personnel not authorized by our company.
- (5) Product sold over 12 months ago.

In order to provide various services to you, please complete registration procedure after you purchase the product. Cut off or copy User's Information Card and fax or mail it to us after the card is filled in. You can also register the product by going to the [www.q-see.com](http://www.q-see.com) website and clicking on the Register link.

## Customer Information Card

|                                 |                 |
|---------------------------------|-----------------|
| <b>User's Name</b>              | <b>Mr./Mrs.</b> |
| <b>Company Name</b>             |                 |
| <b>Postal Address</b>           |                 |
| <b>Postal code</b>              |                 |
| <b>Phone Number</b>             |                 |
| <b>E-mail</b>                   |                 |
| <b>Model Number of Product</b>  |                 |
| <b>Serial Number of Product</b> |                 |
| <b>Purchase Date</b>            |                 |
| <b>Distributor</b>              |                 |

**If you have questions:**

**Contact Us:**

**Mailing Address:**

**DPS Inc.**

8015 E. Crystal Dr  
Anaheim, CA 92807

**Website:**

<http://www.q-see.com>

**Fax:**

714-998-3509

**Customer Service:**

**Phone: 877-998-3440 x 538**

**Email: [cs@dpsi-usa.com](mailto:cs@dpsi-usa.com)**

**Tech Support:**

**Phone: 877-998-3440 x 539**

**Email: [ts@dpsi-usa.com](mailto:ts@dpsi-usa.com)**

## Free Manuals Download Website

<http://myh66.com>

<http://usermanuals.us>

<http://www.somanuals.com>

<http://www.4manuals.cc>

<http://www.manual-lib.com>

<http://www.404manual.com>

<http://www.luxmanual.com>

<http://aubethermostatmanual.com>

Golf course search by state

<http://golfingnear.com>

Email search by domain

<http://emailbydomain.com>

Auto manuals search

<http://auto.somanuals.com>

TV manuals search

<http://tv.somanuals.com>