

Q-SEE QT4 and QT52X series Port Forwarding steps:

DVR and PC need to be connected to the same Router.

Things you need to know :

1. Router make and model
2. If customer changed the default router login, then need to know router login (user name and password)
3. need to know IP of dvr and ports of dvr.

STEP 1: FIND THE IP ADDRESS OF THE DVR.

To find out the IP of DVR for QT4 or QT52X series DVR do the following:

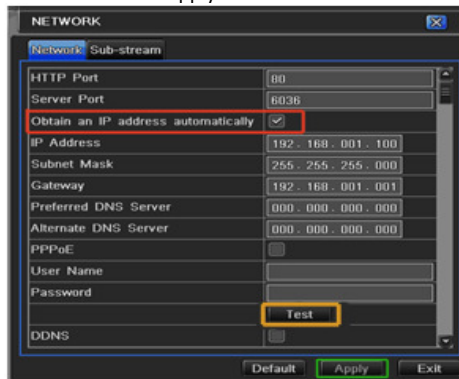
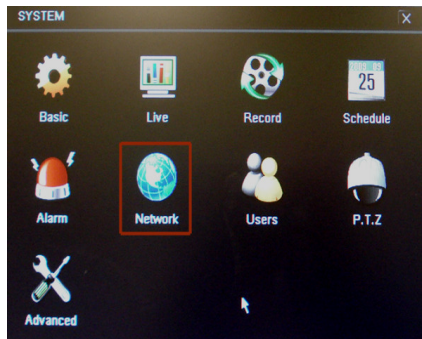
Right Click the Mouse to display the menu bar
Click on the menu icon in the lower left corner.

This will bring up the Main Menu, click on System

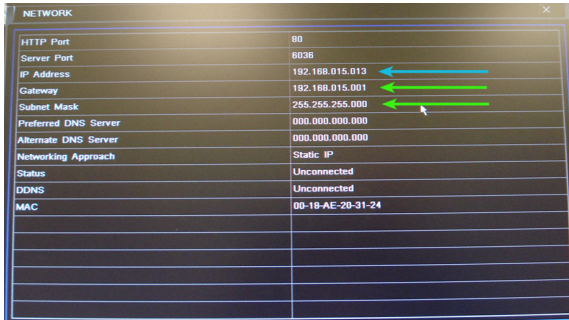


In the System menu , click on Network

Put a checkmark in the box after Obtain an IP address automatically. Click TEST button, if you get OK message at the bottom. Click Apply and Exit.

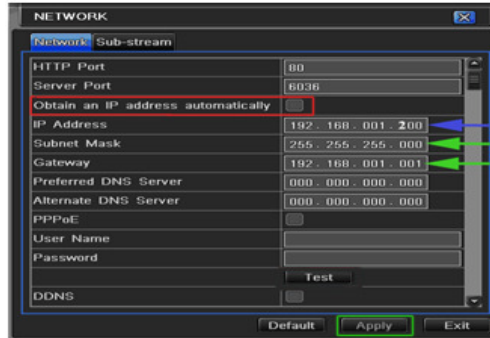


After the router has assigned the DVR an IP address Go back to the Main Menu and click on the Information Icon then Network Icon and write down the IP address, Subnet Mask, and Gateway assigned by the router



Then return to the Network setup screen and enter this information into the table in the configuration screen (shown below) and remove checkmark from the Obtain IP address box Next click on the Apply button to save the addresses So the router does not change them.

The default ports are 80 and 6036. NOTE: some routers, such as 2wire, will not let you use a static IP address. In this case skip this step and stick with the DHCP address

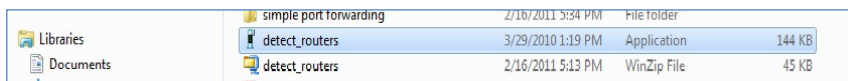


STEP 2: DETERMINE THE NUMBER OF ROUTERS ON THE NETWORK

To Find out the Router information on your network, please download the router detection program from this link: <http://www.pcwintech.com/shanes-toolbox> and click on Detect Multiple Routers



Download the program and unzip it, you will get the detect_routers application. Click to run



Click on CHECK NOW to detect how many Routers are in the network.



If there is only one router in the network, then you just need to do STEP 3.
But if it finds 2 Routers, and the connection looks like this:



Then you need to complete two steps.

First you want to proceed to STEP 3 to forward the ports to the IP address of Router 1.

And then you need to enable DMZ For Router 2. So the connection will pass through this router and go to the router the DVR is attached to. Follow the instructions in STEP 4.

STEP 3: DOWNLOAD SIMPLE PORT FORWARDING PROGRAM

Download Simple Port Forwarding program from the link below:

<http://www.simpleportforwarding.com/download>

Click on Download on Mirror 7, Download and install this program

Make sure to check out all the programs 😊

This is a Free/Pro Program.
2000, XP, 2003, Vista, 2008, 7 & Requires Internet Explorer 6.0 or higher

Current Version: 3.0.21
Supported Routers: 1,602
Main Language: English
Supported Languages: 52

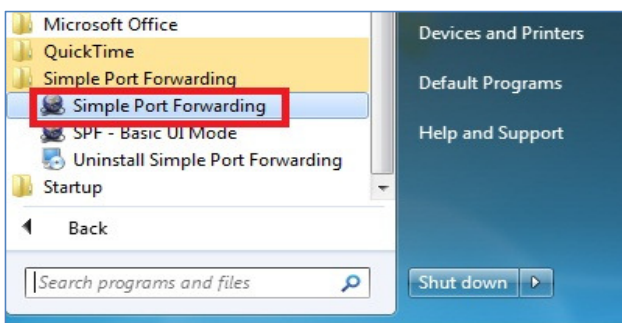
[DOWNLOAD](#)

Need to check that your port forwarding is working?
[Click Here](#)

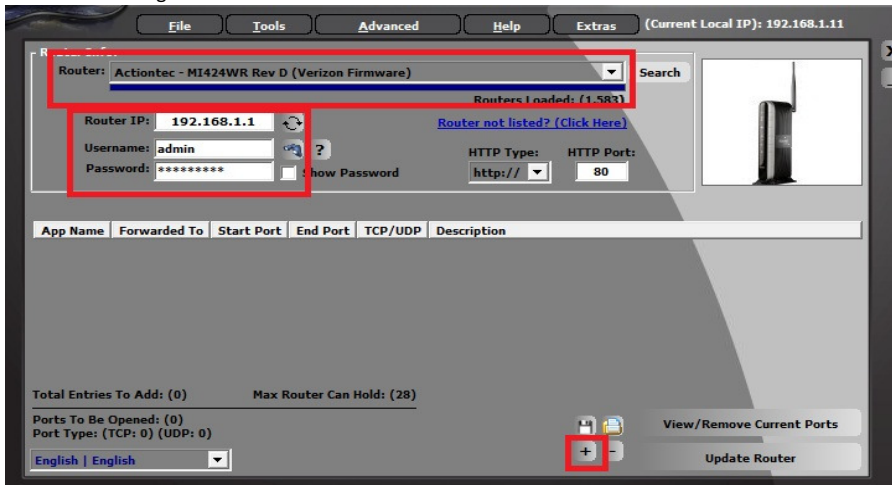
[DOWNLOAD Mirror 1 \(MajorGeeks.com\)](#)
[DOWNLOAD Mirror 2 \(Softpedia.com\)](#)
[DOWNLOAD Mirror 3 \(SnapFiles.com\)](#)
[DOWNLOAD Mirror 4 \(FiberDownload.com\)](#)
[DOWNLOAD Mirror 5 \(SoftSea.com\)](#)
[DOWNLOAD Mirror 6 \(Programosy.pl\)](#)
[DOWNLOAD Mirror 7 \(Direct Download\)](#)

Setup File Info: (5.36 MB) [MD5 Hash - 423A0025A534EA46B084A0DE263E629E]
[DOWNLOAD Zip File \(Non Setup\) Portable Version \(Direct Download\)](#)

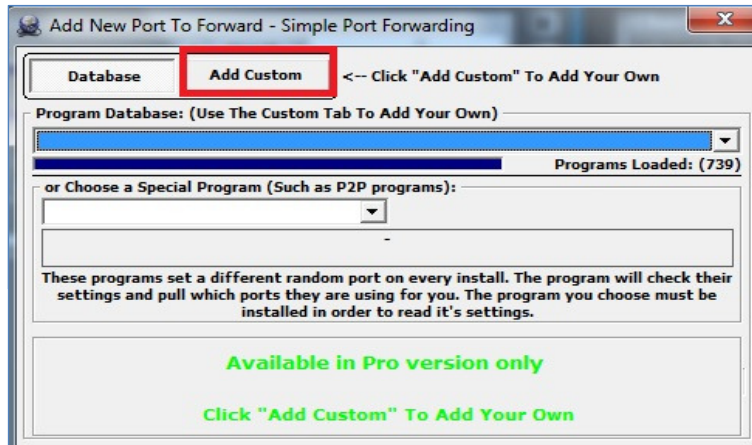
Once the program is installed, go to Start - Programs and look for Simple Port Forwarding and click it.



Select the router from the drop down list. Enter the IP address of Router 1 (from Step 2). Enter the Username and Password for your router or use the default setting. Then click on + sign at the bottom.



Click on ADD CUSTOM



Input the information.

Add New Port To Forward - Simple Port Forwarding

Database Add Custom <-- Click "Add Custom" To Add Your Own

Custom:

Name: (Max 10 Chars.)

Type:

Start Port: (1~65535)

End Port: (1~65535)

IP Address:

Name: any name
Type: TCP
Start Port: 80
End Port: 80
IP add: IP of DVR
Click on ADD

Repeat for port 6036

The ports you added will now show on the list. Click on Update Router at the bottom.

Router Info:

Router: Actiontec - MI424WR Rev D (Verizon Firmware) Search

Routers Loaded: (1,583)

Router IP: Router not listed? (Click Here)

Username: HTTP Type: HTTP Port:

Password: Show Password

App Name	Forwarded To	Start Port	End Port	TCP/UDP	Description
DVR	192.168.1.11()	80	80	TCP	DVR
DVR2	192.168.1.11()	6036	6036	TCP	DVR2

Total Entries To Add: (2) Max Router Can Hold: (28)

Ports To Be Opened: (2)
Port Type: (TCP: 2) (UDP: 0)

"Updating is in progress" message will display, wait until you see it say DONE at the bottom.

Job Status - Simple Port Forwarding By PcWinTech.com

Step 18. set_type_choices("TCP|UDP|Both")
Step 19. set_combobox("svc_entry_protocol,0") (Successful)
Step 20. timeout("1500") (Successful)
Step 21. set_port_range("port_range") (Successful)
Step 22. timeout("1500") (Successful)
Step 23. click_onclick("submit") (Successful)
Step 24. timeout("1500") (Successful)
Step 25. wait_until_words_not_found("Please") (Successful - Please Not Found On Page)
Step 26. timeout("1500") (Successful)

Finished Adding DVR2

DONE! (All Commands Finished)

Proceed To Next Command (Debug Mode Only)

Router Status: Done
Last Error Status Code:

If for some a port or ports that you forwarded are not listed in the Router, and if you look on the SCRIPTS on left side and you see a message that the port already exists (Red box in image below), then you want to change the Port 80 to 85 in DVR and start over again.

```
Step 03. set_frame_number("2")
Step 04. nav("FW_forward.htm")
(Successful)
(http://admin:password@192.168.1.1/FW_forward.htm)
Step 05. check_if_name_exists("")
This Entry (426) Already Exists On The Router, This Entry Will
be Skipped.
Finished Adding 426
(Current - 2/2)
Adding 4261 (TCP/UDP) For Ports 6036-6036 To 192.168.1.9()
Running Script From Database For Selected Router
Step 01. nav("first.php")
```

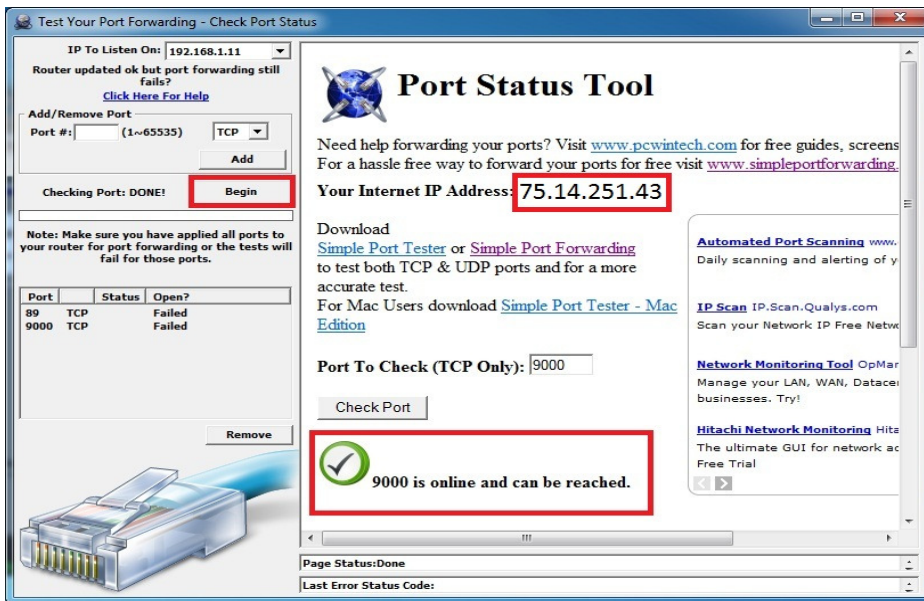
Once you get the DONE message that the ports have been forwarded, test if the Ports are working by clicking on number 7 in the image below.

The image shows a 'Check List' dialog box with the following steps:

- (1) Update Router List: Do it now
- (2) Select Your Router & Set Login Info: Do it now, Router not listed?
- (3) Set your Local IP to a Static IP (Optional, not always needed): Disabled, Help, Available in Pro version only
- (4) Choose which ports you need to forward: Do it now
- (5) Update The Router: Do it now, Did updating the router fail? Check the help file first then ask for help in the forums! View Help, Visit Forums
- (6) Add ports to the Windows Firewall: Disabled, Available in Pro version only
- (7) Test that the ports now work: Do it now, Port test failed? Click Here For Help

At the bottom, there is a checkbox for 'Do Not Show This At Start Up.' and a 'Close' button.

Click on Begin and if it says port can be reached, it is setup correctly.



STEP 4: SETTING UP DMZ IN ROUTER 2 (IF NEEDED FROM STEP 2)

Step 1. Login into Router 1 by putting the IP of Router 1 into the Internet Explorer browser, as in example above where Router1 IP is 192.168.0.1

Step 2. Find the status page on the router settings that shows the WAN/Internet IP address and write it down this WAN IP address.

Step 3. Log into the Router 2 by putting the IP of Router 2 into the Internet Explorer browser, as in example above where Router 2 IP address is 192.168.1.1

Step 4. Find the DMZ page in the router settings.

Step 5. Enter the WAN IP for Router 1 into the DMZ page and enable DMZ.

NOTE: If you do not have a DMZ setting in the router, check to see if there is a Bridge setting. If so then use the Bridge setting instead of DMZ.

Step 6. Save and your done. You have forwarded the ports on the router the DVR is attached to, to the IP address of the DVR, and set the other router to pass the connection to the primary router.

To connect to your DVR from Internet, you have to put the Internet IP address listed above into an Internet Explorer browser or remote access program window.

To connect from Internet Explorer you will need to enable ActiveX controls in the browser. For instructions go to: <http://q-see.com/files/HowToFiles/E-ActiveX%20Controls.pdf>

If you are forwarding any instead of port 80, then you need to put that port at the end of the address.

Example, if you use port 85: <http://75.14.251.43:85>

To connect from smart phones go to the webpages below for instructions:

Iphone: <http://q-see.com/files/DeviceFiles/T-iPhoneAccess.pdf>

Android: <http://q-see.com/files/DeviceFiles/T-Android.pdf>

Blackberry: <http://q-see.com/files/DeviceFiles/T4-BlackberrySetup.pdf>

Windows Mobile: <http://q-see.com/files/DeviceFiles/T-Smart Phone Access Windows Mobile.pdf>

Symbian: <http://q-see.com/files/DeviceFiles/T-Smart Phone Access Symbian.pdf>

Free Manuals Download Website

<http://myh66.com>

<http://usermanuals.us>

<http://www.somanuals.com>

<http://www.4manuals.cc>

<http://www.manual-lib.com>

<http://www.404manual.com>

<http://www.luxmanual.com>

<http://aubethermostatmanual.com>

Golf course search by state

<http://golfingnear.com>

Email search by domain

<http://emailbydomain.com>

Auto manuals search

<http://auto.somanuals.com>

TV manuals search

<http://tv.somanuals.com>