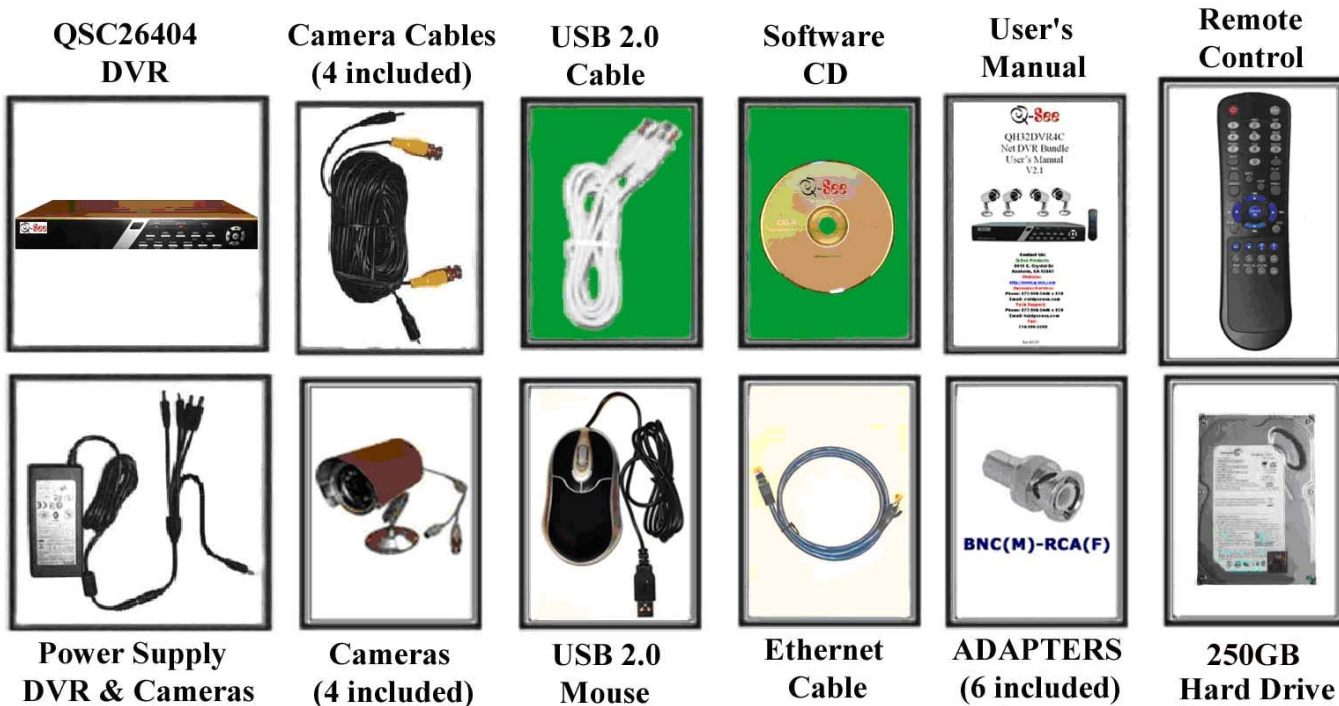
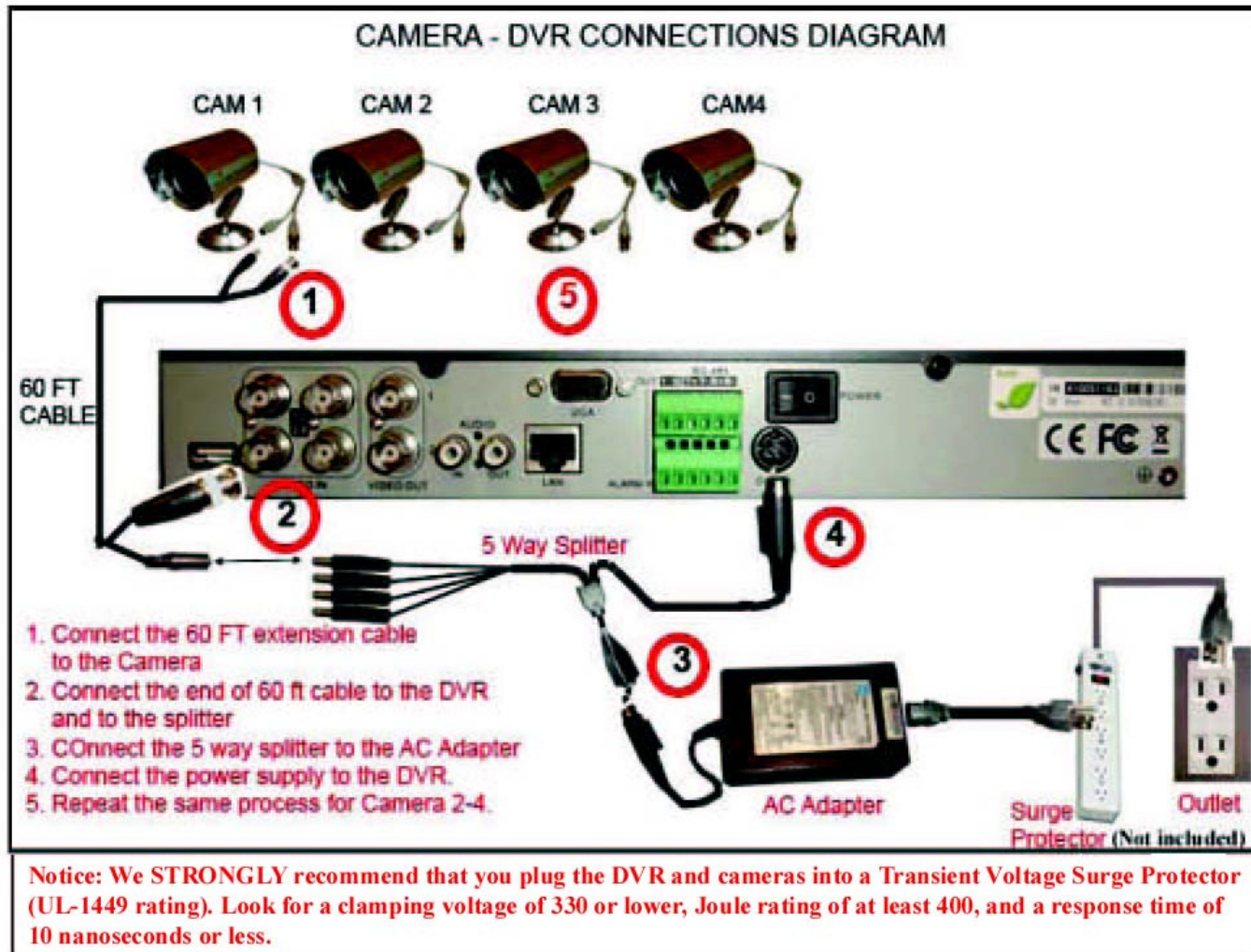


QUICK INSTALLATION GUIDE FOR CIF DVR 4 CH MODEL QH25DVR4C

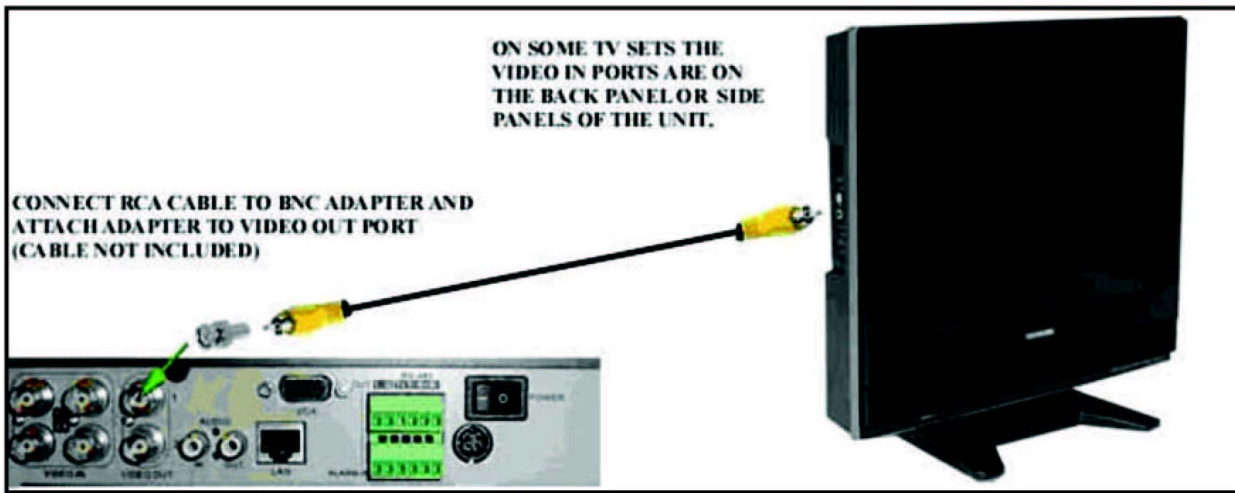
Part 1- Package contents:



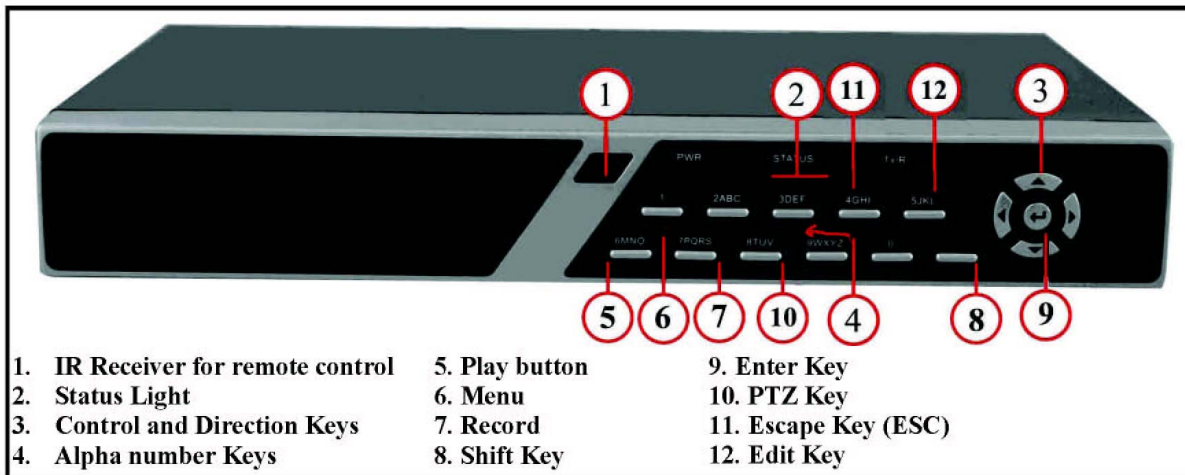
Part 2 – DVR Camera and Power Connections



Part 3 – Connecting the DVR to your TV

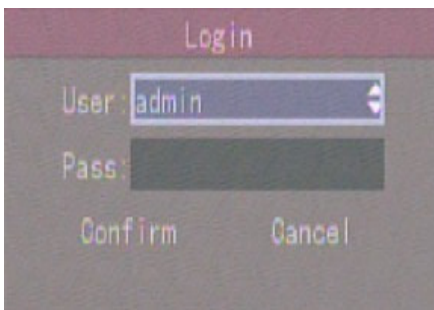


Part 4 – DVR Controls: Front Panel

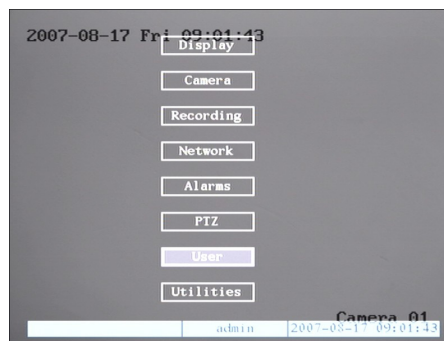


USING THE REMOTE CONTROL: Every time you restart the DVR you need to re-initialize the remote. You do this by pushing the DEV button in the upper right hand corner, then pushing the 8 button twice, then pushing the ENTER button.

Part 5 – Accessing the DVR menus



To access the settings on the DVR push Menu button on the front of the DVR or on the remote. This will display the above Screen. The default user is admin and the Default password is 12345. To enter this Password press the shift key and then the number on the DVR or remote. Then press the enter button twice.



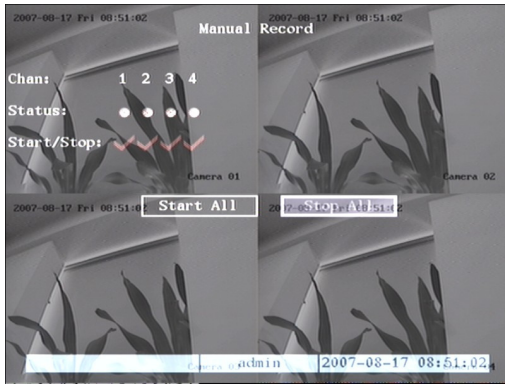
This will bring up the main menu screen shown above. From here you can use the down arrows on the front of the DVR or remote to select the option you want and then hit the enter button.

Part 6 – Setting up DVR to record

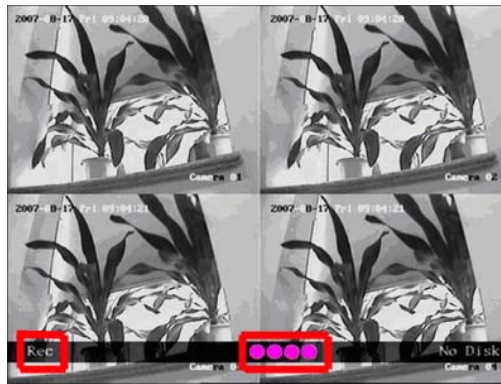
There are 3 modes for recording:

1. Manual recording:

Push Shift button, then hit the RECORD button. Enter name and password (default is admin and 12345) as in Part 5. This will display the screen below:



In Start/Stop heading use arrow keys & enter button to put check marks in all cameras you want to record on, or you can select Start All option to record on all cameras.



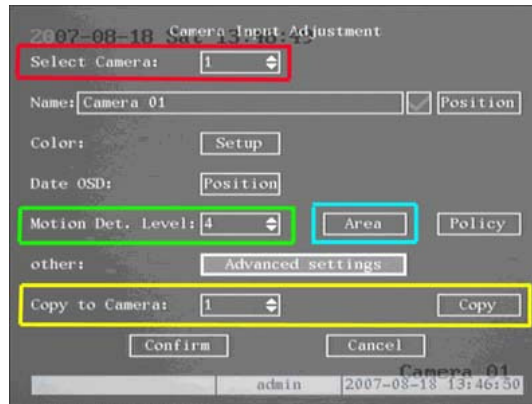
After you press the Enter button the screen will return to camera preview screen and the record line (REC) on the bottom of the screen will be pink.

2. Motion Detection Recording:

Follow instructions in part 5 to go to main menu. Go to CAMERA option (red circle in pic 1) and hit Enter, This will display the screen in pic 2. Select the camera (red square), Go down to MOTION DET LEVEL (green square), set it to 2 or 3 (normal), Go to AREA (blue square) and push PTZ button to select the entire area and push ENTER to exit. Next go to COPY (yellow square) to copy to all cameras and click CONFIRM. You have to go back to each camera to setup the AREA for each camera. Return to Main Menu.

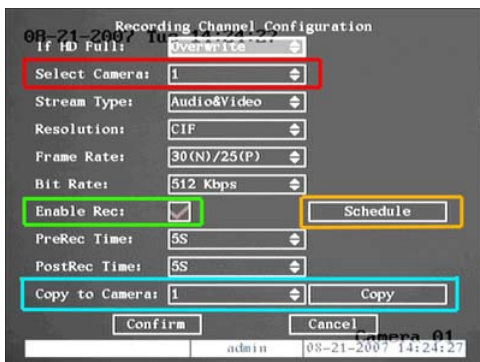


Pic 1

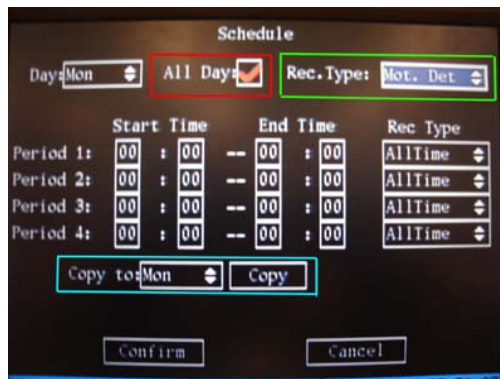


Pic 2

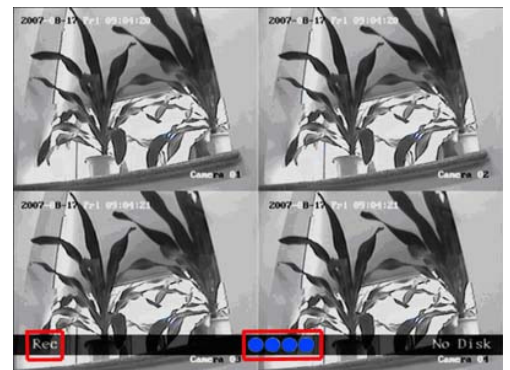
Now go to RECORDING (green square in Pic 1) and hit Enter, this will bring up the screen in Pic 3. Go down to ENABLE REC (green square) and put a CHECK mark in it. Go to SCHEDULE (orange square) and hit enter. This will display the screen in Pic 4. Select a day and then Select ALL DAY (red square). REC TYPE select MOT. DET. (green square). COPY to all days (blue square), select CONFIRM and hit Enter. Restart the DVR. When it records on Motion, the light at the bottom REC line will be Blue (red square on Pic 5).



Pic 3



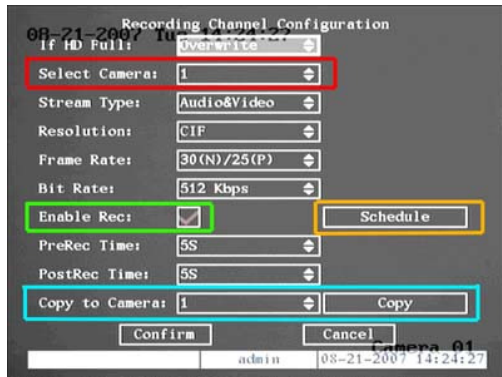
Pic 4



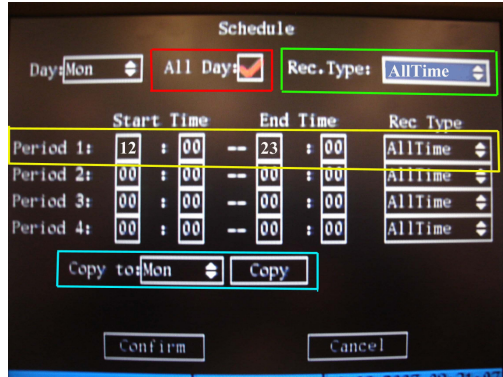
Pic 5

3. Time Schedule Recording.

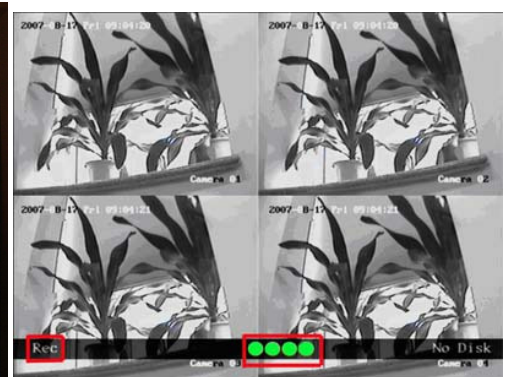
Follow instructions in part 5 to go to main menu. Now go to RECORDING (green square in Pic 1) and hit Enter, this will bring up the screen in Pic 6. Go down to ENABLE REC (green square) and put a CHECK mark in it. Go to SCHEDULE (orange square) and hit enter. This will display the screen in Pic 7. Select a day and then Select ALL DAY (red square). Set record type to All Time (green square). Set the Schedule start and End time for each day (yellow square). COPY to all days (blue square) and CONFIRM. When the schedule starts recording the REC line will be green (red square in Pic 8)



Pic 6



Pic 7

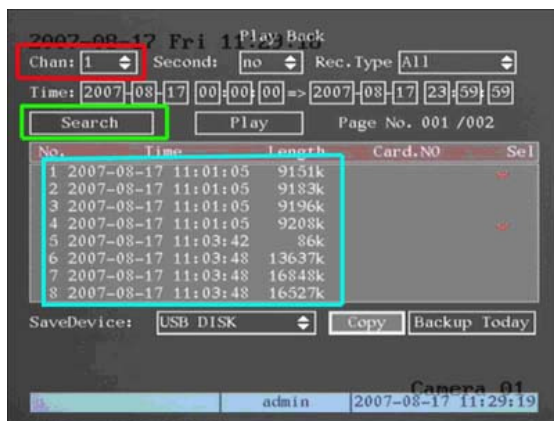


Pic 8

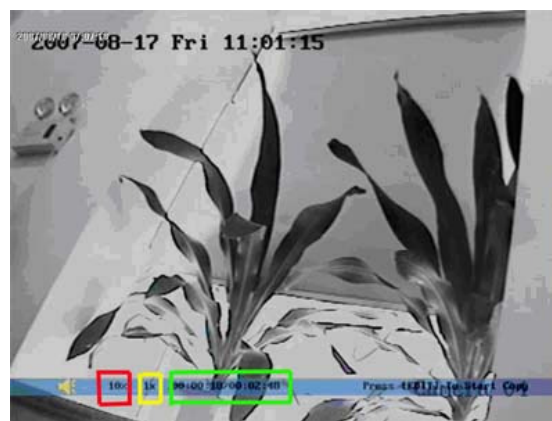
Part 7 – Setting up the DVR to Playback

To play back recordings push the Play button to enter Playback Mode. System will request user name and password (default is admin and 12345) Then display the Play Back screen shown below. Select the camera you want to view files from (red square). Click on Search button to display files (green square). Select the file you want to play (blue square), push the enter button and the file will play. When the playback starts the screen in Pic 2 will be displayed. The bar at the bottom of the screen shows you how far into the file you are as a percentage (red square), what speed you are playing back (yellow square), how far you are into the file in minutes/seconds and how long the file is in minutes/seconds (green square). You can adjust the playback speed using the up and down arrows on the front panel or remote. Push on ESC button to return to list.

NOTE: Recording will not be interrupted while you are in Playback mode.



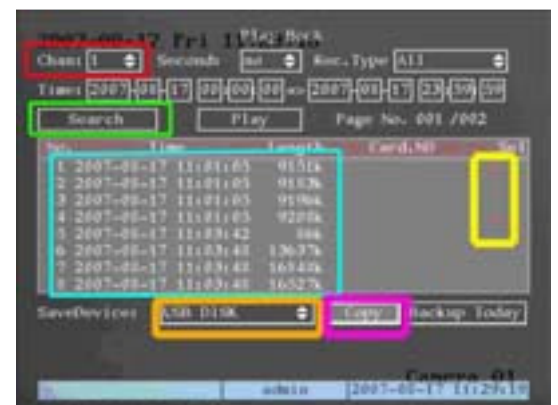
Pic 1



Pic 2

Part 8 – Setting up the DVR to Backup Files

This DVR has a USB port you can use to back up to a USB DVD/CD-RW drive, USB Hard Drive, or USB flash drive. To back up to USB DVD/CD-RW, USB HDD, or USB Flash Drive : Go to the Play Back screen and select the camera and files you want using the instructions in Part 7. Push the EDIT button and it will put a check mark on the file (yellow square). Do this for all of the files you want to back up. Under the SaveDevice select USB CDRW/DVDRW, USB HD, or USB Disk (orange square) Click on Copy option (purple square).



Notice: To Play Back the backup files, you need to install the FILE PLAYER program onto your PC. This program comes on the installation CD. You will need to connect your USB backup device to your PC then run the File Player to play back the files.

If you have questions:

Contact Us:

Mailing Address:

DPS Inc.

**8015 E. Crystal Dr
Anaheim, CA 92807**

Customer Service:

Phone: 877-998-3440 x 538

Email: cs@dpsi-usa.com

Website:

<http://www.q-see.com>

Fax:

714-998-3509

Tech Support:

Phone: 877-998-3440 x 539

Email: ts@dpsi-usa.com

Free Manuals Download Website

<http://myh66.com>

<http://usermanuals.us>

<http://www.somanuals.com>

<http://www.4manuals.cc>

<http://www.manual-lib.com>

<http://www.404manual.com>

<http://www.luxmanual.com>

<http://aubethermostatmanual.com>

Golf course search by state

<http://golfingnear.com>

Email search by domain

<http://emailbydomain.com>

Auto manuals search

<http://auto.somanuals.com>

TV manuals search

<http://tv.somanuals.com>