



# Quick Installation Guide

8 Channel H.264 Compression DVR with  
CIF Real-Time Recording and  
8 Color CMOS Camera Kits  
Model QS218-811



**Q-SEE QUICK INSTALLATION GUIDE**  
**MODEL NUMBER QS218-411**

**PART 1 - PACKAGE CONTENTS:**

**8 - Color CMOS Cameras with Stands**

- (4) QSM1424C (6mm Lens)
- (4) QSM1424W (3.6mm Lens)

**QS218 DVR**



**Pre-Installed  
Hard Drive**



**Software  
CD**



**Power Supply  
for DVR**



**Power Supply &  
8 -Way Splitter  
For Cameras**



**Camera Cables  
(8 Included)**



**BNC (M) - RCA (F)  
Adapters  
(2 Included)**



**User's  
Manual**



**Ethernet  
Cable**



**USB 2.0  
Mouse**

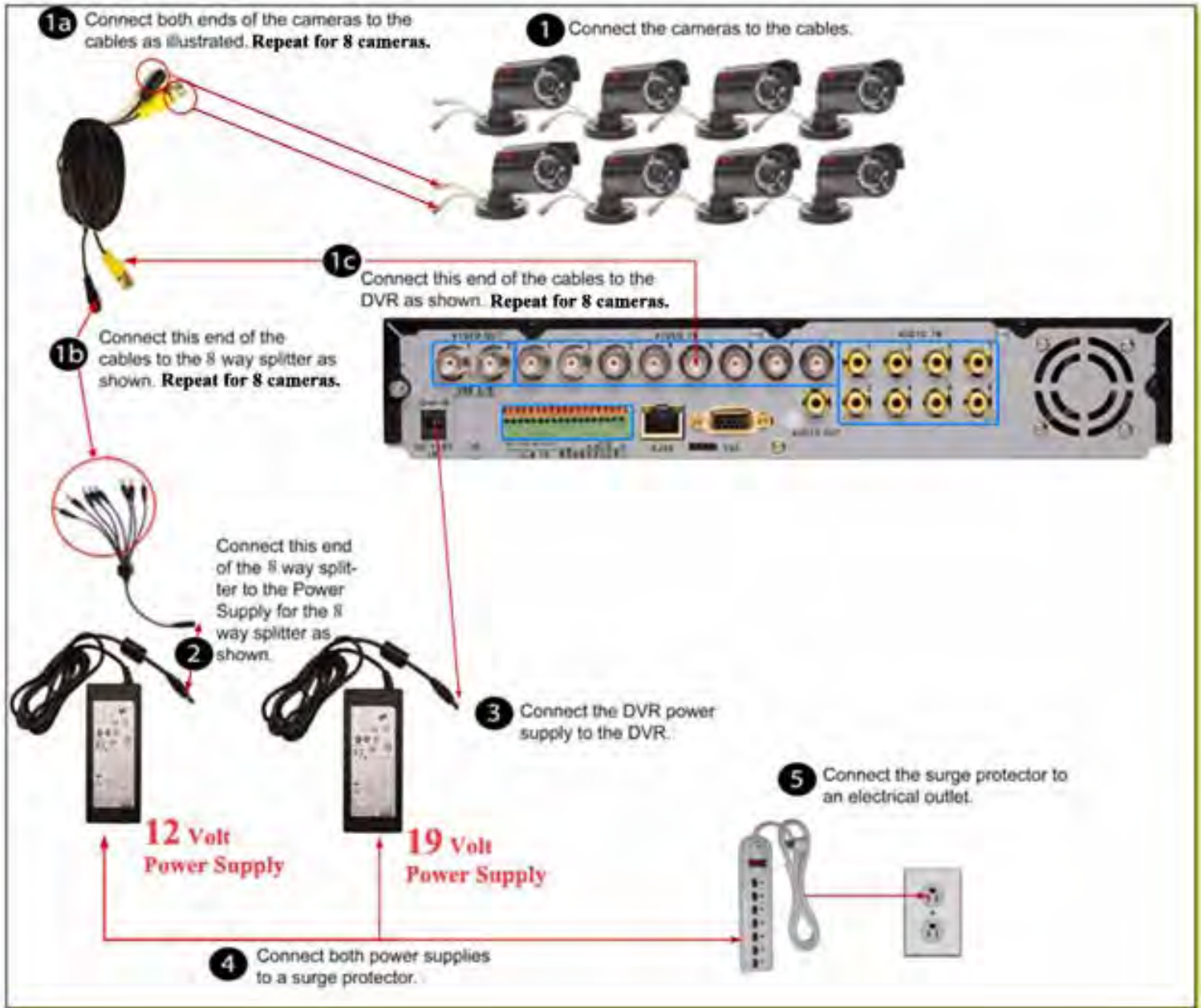


**Remote  
Control**



**Q-SEE QUICK INSTALLATION GUIDE**  
**MODEL NUMBER QS218-411**

**PART 2 - DVR CAMERA AND POWER CONNECTIONS**



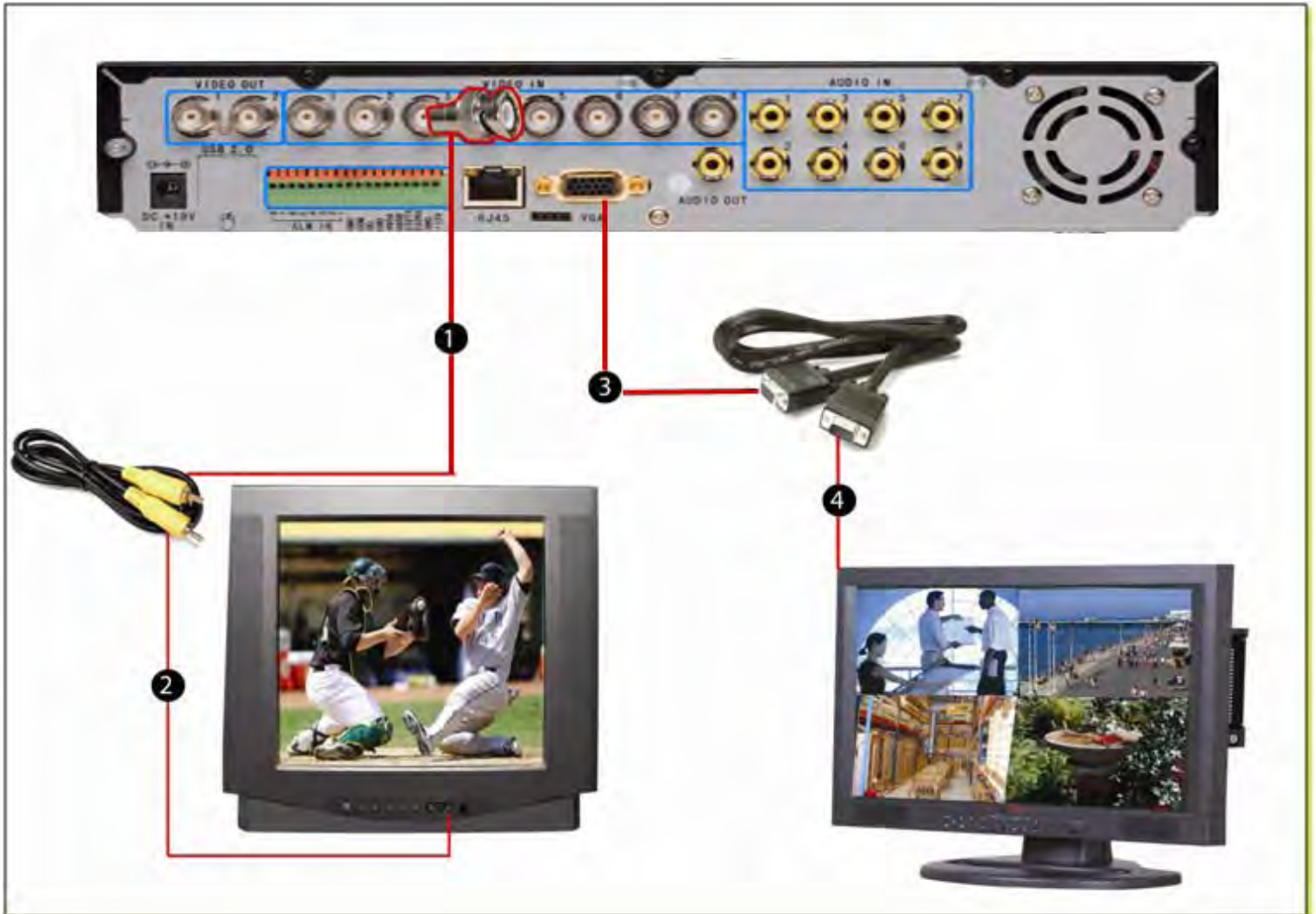
Please note that it is **STRONGLY** recommended to use a surge protector that is UL-1449 rated. Look for a clamping voltage of 330 or lower, a Joule rating of at least 400 and a response time of 10 nanoseconds or less.

**WARNING:** Power supply for DVR is 19 Volt, power supply for CAMERAS is 12 Volt, make sure you use the correct power supply for the correct device.

**Q-SEE QUICK INSTALLATION GUIDE**  
**MODEL NUMBER QS218-411**

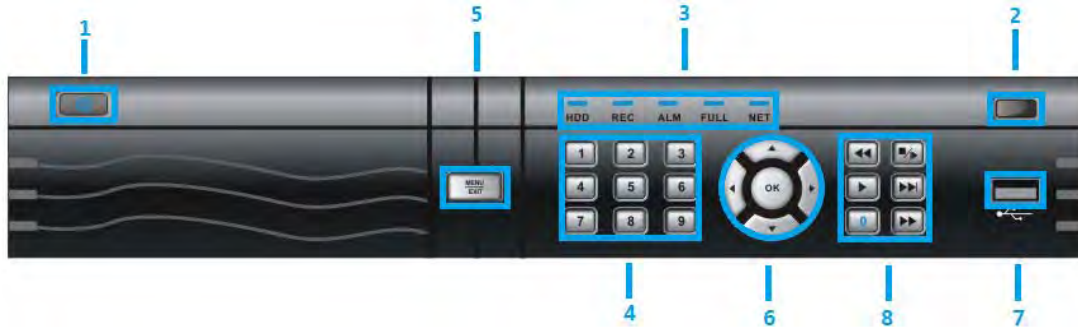
**PART 4 - CONNECTING THE DVR TO YOUR TV**

1. Plug the BNC to RCA adapter in to Video Out port then connect the RCA cable (not included) to the DVR.
2. Connect the other end of the RCA cable to the Video Input on the TV if you are using a television screen.
3. If you are using a PC monitor, plug the VGA cable (not included) to the VGA port on the DVR.
4. Connect the other end of the VGA cable to the monitor.



**Q-SEE QUICK INSTALLATION GUIDE**  
**MODEL NUMBER QS218-411**

**PART 5 - DVR CONTROLS: FRONT PANEL**

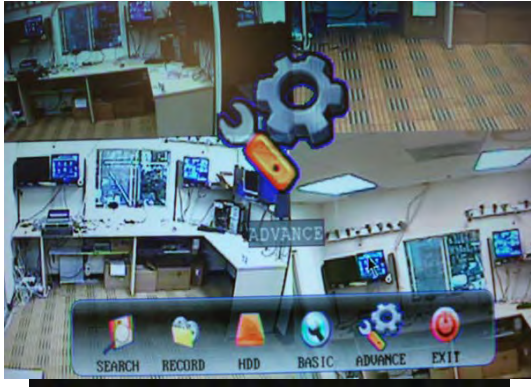


| Item Number | Name/Symbol                       | Description   |   |
|-------------|-----------------------------------|---|---|
| 1           | <b>STANDBY</b>                    | Press to set the system in standby mode.  |   |
| 2           | <b>IR SENSOR</b>                  | IR Receiver for remote control.   |   |
| 3           | <b>LED INDICATORS</b>             | Shows status of hard drive, recording, alarm, HDD full and network.   |   |
| 4           | <b>CHANNEL/NUMBER S/ PLAYBACK</b> | Press buttons 1-8 to view the selected channel full-screen; press buttons 1-0 to input passwords and user IDs.          |   |
| 5           | <b>MENU EXIT</b>                  | Press to open/close the main menu.  |   |
| 6           | <b>NAVIGATION/OK</b>              | <b>OK</b>   | In menus, press to confirm selections; in PTZ mode, press to change the navigation buttons to control a connected PTZ camera (not included) |
|             |                                   | <b>UP ARROW</b>   | Press to move cursor up; in PTZ mode, press to pan camera up.   |
|             |                                   | <b>DOWN ARROW</b>   | Press to move cursor down; in PTZ mode, press to pan camera down.   |
|             |                                   | <b>LEFT ARROW</b>   | Press to move cursor left; in PTZ mode, press to pan camera left.   |
|             |                                   | <b>RIGHT ARROW</b>  | Press to move cursor right; in PTZ mode, press to pan camera right.   |
| 7           |                                   | Connect a USB flash drive to the top port for data backup and firmware upgrades connect a USB mouse to the bottom port. |   |
| 8           | <b>DURING PLAYBACK PRESS:</b>     |   | Increase reverse playback speed 1X, 2X, 4X.   |
|             |                                   |   | Press to freeze playback to one frame, then press again to advance frame-by-frame.  |
|             |                                   |   | Press to start playback   |
|             |                                   |   | Press to slow playback speed by 1/2, 1/4, 1/8.  |
|             |                                   |   | Press to increase forward playback speed 1X, 2X, 4X, 8X.  |

# Q-SEE QUICK INSTALLATION GUIDE

## MODEL NUMBER QS218-411

### PART 6 - ACCESSING THE DVR MENUS



Choose MENU by right clicking on the mouse or by pushing the MENU button on the DVR front panel or remote control.

The Main Menu offers the following Setup Features:

**SEARCH:** Search for recorded video on the system.

**RECORD:** Enable recording & audio, set resolution & quality, recording mode and file size.

**HDD:** Display hard drive status and format the internal hard drive of the system.

**BASIC:** Open the Basic Setup Menu, which lets you set the system language, date and time, Device IDs and passwords, and configure audio and video settings.

**ADVANCE:** Opens the Advanced Setup Menu, which lets you view system info, configure alarm, PTZ, mobile, and network settings.

**EXIT:** Closes the Main Menu.

### PART 7 - SETTING UP CAMERAS FOR VIEWING AND RECORDING



From the Main menu, select BASIC then DISPLAY. Here you can setup the name display (up to 8 characters) and position of each channel (cameras). Select COLOR SETUP to adjust the image brightness, saturation, contrast and hue settings for each channel (camera). You can also choose whether each channel can be previewed in LIVE MODE and/or RECORDING MODE.

### PART 8 - TO START RECORDING



This System offers 3 modes for recording:

**1. Manual 2. Time Schedule 3. Motion Detection.**

From the main menu, select RECORD to enter into the Record Setup menu (shown on the left).

**CHANNEL:** "ON" enables video to record from the respective camera. If the channel is set to "OFF", video from that channel will not record.

**QUALITY:** Best, Good, Normal

Using higher quality settings results in better video quality, but takes up more space on the hard drive. Choosing lower settings result in lower video quality, but takes up less space on the hard drive.

**AUDIO:** If audio is ENABLED sound will be recorded with the video from the channels, and will have audio output in playback mode. If audio is DISABLED, sound will not record, and there will be no audio output in playback mode (Audio cameras or a microphone is required to record the sound).

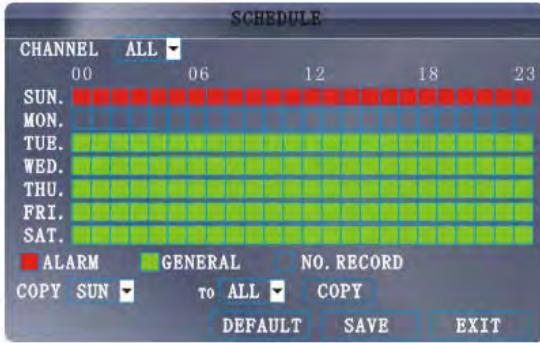
**REC MODE:** select POWER UP or TIMER RECORD. If you select POWER UP, the system will record continuously (Normal Recording) when the system is powered on. If you select TIMER RECORD, you have to set a recording schedule on the system.

**REC SIZE:** Choose the time length of all recorded files: 15, 30, 45, 60 min. (Max = 60 min)

**MASK FIELD SETUP:** lets you block a specific portion of a channel you do not want recorded or shown on the display screen. This can be useful if you need to conceal a sensitive area being captured by the installed camera.

# Q-SEE QUICK INSTALLATION GUIDE

## MODEL NUMBER QS218-411



### Grid Explanation:

Red = Alarm (motion detection) recording  
Green = General (time schedule) recording  
Transparent = No recording  
Blue = The channel and date selected.

### Manual Recording:

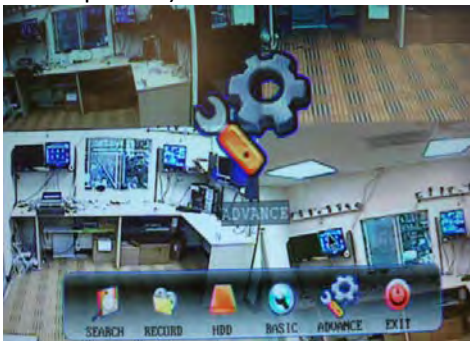
From the Record Setup screen set the Rec Mode to "ALWAYS". Your DVR will continuously record and separate files will be created with the Pack Time intervals you selected.

### Time Schedule Recording:

From the Record Setup screen, set the Rec Mode to TIMER RECORD and click "SCHEDULE". This will display the Schedule menu (see image above). Select the channels (cameras) that you wish to record on a schedule. The options are: CH-1 through CH-8, and ALL. Click on the green GENERAL option box then click on the boxes for the days and times that you want to record using this option on the timeline. You can use the [From – To] pull-down menus and COPY button to copy settings from one day to another day, or all days. Your DVR will record on it's Time Schedule, and separate files with the Pack Time Interval you selected. Click APPLY to activate your customized schedule, and then reboot the DVR.

### Motion Detection Recording:

From the Record Setup screen, set the Rec Mode to TIMER RECORD and click "SCHEDULE". This will display the Schedule menu (See picture above). The options are: CH-1 through CH-8, and ALL. Click on the red ALARM option box then click on the boxes for the days and times that you want to record using this option on the timeline. You can use the [From – To] pull-down menus and COPY button to copy settings from one day to another day, or all days. Your DVR will record on Motion Detection. Click APPLY to activate your customized schedule, and then go to the Devices option (red box in first below picture) and select the Motion Option (red box in second picture below), which will display the Motion Detect Box.



## Q-SEE QUICK INSTALLATION GUIDE

### MODEL NUMBER QS218-411

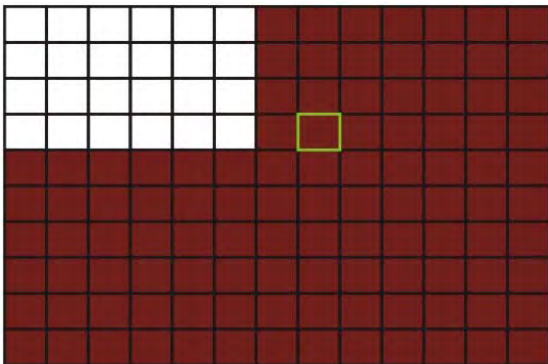


The Motion Detection Menu has 3 sections, including Channel Status, Sensitivity and Motion Area.

**Status:** This option allows you to enable motion detection on any channel.

**Sensitivity:** This option allows you to set sensitivity level of motion detection from 1 to 4, with 4 being the highest.

**MD Area:** Allows you to set the area of the camera view that you want to be sensitive to motion.



Next, click on the MD AREA SETUP button, which will display the picture on the left. This option allows you to select the area you want to be sensitive to motion. You can set this area by using the mouse or REV, FWD, and SEL keys on the front panel. Once you have set the area, right click with the mouse or push the ESC key key to save the setting. After you have set all of the cameras, click on the Apply button to save the settings.

### PART 9 - SETTING UP THE DVR TO PLAYBACK



#### Searched Playback:

From the Main Menu select SEARCH to display the Video Search Menu shown to the right. If you input a specific date and click Search, you will find all the recordings for that day. When you select an item, you will playback the recordings in 4 channel mode; or, click [File list] button to display File list interface, where you can playback or backup the file you selected. See File List heading below.

In the playback window you can play video Forward at 2x, 4x, and 8x speeds, Slow play at 1/2x, 1/4x, and 1/8x, or normal play, pause and play frame by frame using the playback control bar, and adjust volume by clicking or sliding tune control bar. When playback has finished, system will return to previous menu.



## Q-SEE QUICK INSTALLATION GUIDE

### MODEL NUMBER QS218-411



#### File List:

On the Search Menu click the Search button then click File list to display the sub-menu shown in the picture on the left.

This option will allow you to view all of the available files by channel and type (all, normal, or alarm).

You can click on a file to playback the file.

Use the buttons on the side panel to navigate the file list:

**FIRST:** Jump to the first page of the list

**PRE:** Turn to the previous page

**NEXT:** Turn to the next page

**LAST:** Jump to the last page of the list

**ALL:** Select all files

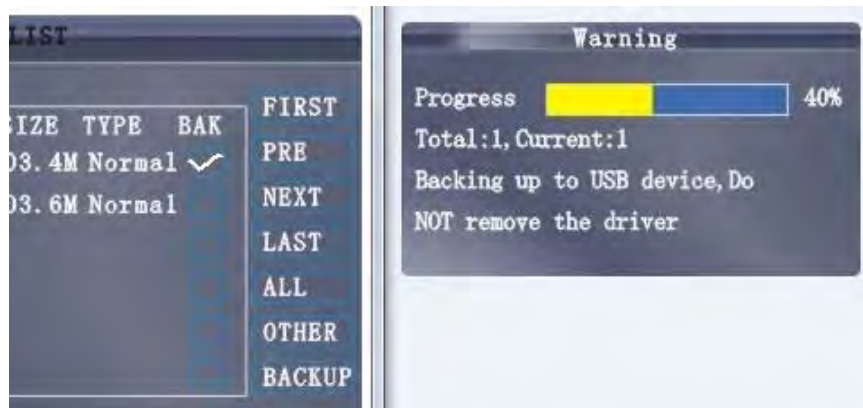
**OTHER:** Clear all files

**BACKUP:** After selecting a file(s), click to begin copying the data to a USB flash drive (not included)

## PART 10 - BACKING UP THE VIDEO ON THE DVR

Attach a USB flash drive or USB hard drive to the USB backup port and follow the instructions in Part 9 to go to the File List in the Search menu.

If you want to backup a single recorded file from the file list, from the File List dialog box pictured above, select the file you wish to back up by placing a check mark in the BAK box and hit the [BACKUP] button on bottom of the screen. You will then receive a pop up screen as illustrated below showing you the progression of your backup. Once backup is complete, you will then receive a pop up message informing you that you have backed up your files successfully. Note that all files will be in an H264 format that can be converted to AVI using the playback software that comes with the DVR or through the remote viewer program. Once converted, you can then view these files through any program that supports an AVI format.



# Questions or Comments?

## Contact Us:

**Mailing Address:**

**DPS, Inc.**  
8015 E. Crystal Dr.  
Anaheim, CA 92807

**Website:**

<http://www.q-see.com>

**Fax:**

714-998-3509

**Customer Service:**

Phone: 877-998-3440 x 538  
Email: [cs@dpsi-usa.com](mailto:cs@dpsi-usa.com)  
Live Chat from our Website

**Tech Support:**

Phone: 877-998-3440 x 539  
Email: [ts@dpsi-usa.com](mailto:ts@dpsi-usa.com)  
Live Chat from our Website

REVISED 9/2/2010

## Free Manuals Download Website

<http://myh66.com>

<http://usermanuals.us>

<http://www.somanuals.com>

<http://www.4manuals.cc>

<http://www.manual-lib.com>

<http://www.404manual.com>

<http://www.luxmanual.com>

<http://aubethermostatmanual.com>

Golf course search by state

<http://golfingnear.com>

Email search by domain

<http://emailbydomain.com>

Auto manuals search

<http://auto.somanuals.com>

TV manuals search

<http://tv.somanuals.com>