



Quick Start Guide

Quick Start Guide – Remote Internet Monitoring
4 Channel DVR
For Models: QSTD5304
QSDF8204
QSD2304L

- 1** Setup
 - 2** Connect
 - 3** Enjoy
- Remote Internet Monitoring**



Digital Peripheral Solutions, Inc.
8015 East Crystal Drive,
Anaheim, CA 92807
www.Q-See.com



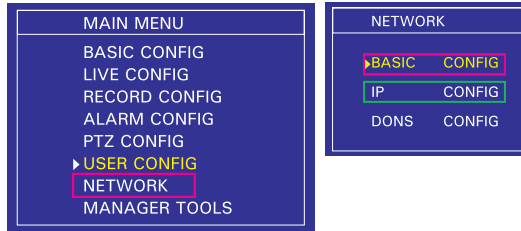
1 Setup

A Remote Monitoring Setup for DVR using DHCP to setup IP address

Accessing the DVR from a single router: To access the DVR from a computer that is using the same router as the DVR, set up the network settings using either the DHCP option or assigning a static IP address:

To Setup DHCP (Most common routers are DHCP)

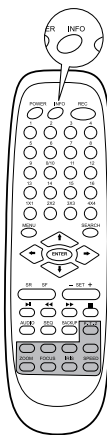
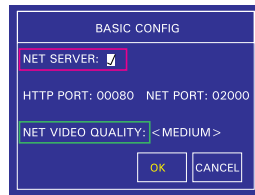
1. To assign an IP address to the DVR using DHCP, select the Menu Key on the DVR to access the Main Menu.



2. Use the DVR Direction Keys to select the Network Option (red box) and push Enter Key. Select the IP Configuration option (green box) and select Enter.



3. Under IP Config: select DHCP, select OK and reboot the system for settings to register.

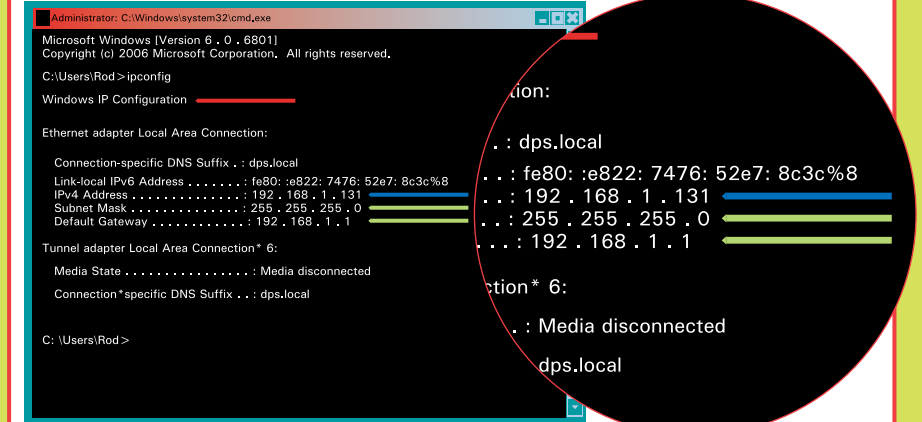


Push the INFO button on the remote control to see the newly assigned IP address.

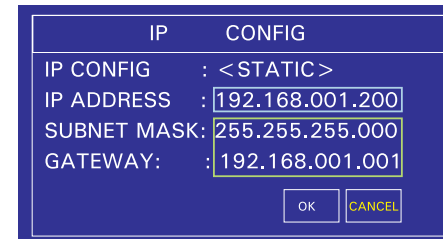
Convert assigned DHCP IP address to a Static IP Address: (Do this so your IP address does not change.) Push the INFO button on the remote or DVR front panel to get the IP address information assigned by the router. Then go back to the IP config window change to static, and enter the IP addresses from the info screen.

B Remote Monitoring Setup for DVR using a Static IP address

Setup the network configuration on the DVR to work with the settings on the router.
Static IP: To obtain the router settings, go to the Run Option on a computer that is attached to the same router as the DVR and type "cmd". Select OK to bring up the command prompt screen, as shown in the picture below. Type "ipconfig" at the prompt to access the router settings. Capture the Gateway and Subnet Mask Numbers (see green arrows below). On the DVR push the Menu Key to prompt the Main Menu, use the Direction Keys to select the Network option and push Enter to display the Network Screen. Select the IP Config option and select Enter to display the IP Config Window.



To set the IP address of the DVR use the same first three sets of numbers as the Gateway and assign a fourth set of numbers that is different from all other devices attached to the same router. For example: if the IP address of your computer in the ipconfig was a single or two digit number, use a number in the 100s, if in the 100s, use 200.



C Attaching the DVR directly to DSL/Cable modem

PPPOE: Select the PPPOE option in the IP config options. To access the IP config window: Push the Menu Key on the DVR to prompt the Main Menu. Use the Direction Keys to select the Network option and push Enter to display the Network Screen, select the IP Config option and select Enter to display the IP Config Window.



1. Use the Enter key to change the IP config setting to PPPOE
2. Enter user id and password in the PPPOE section

*Contact your Internet Service Provider for your user id and password

A Port Forwarding

To access the DVR from a remote computer over the internet via internet browser (Internet Explorer).

- 1 Forward Port 80 and Port 2000 on the router attached to the DVR, to the IP address of the DVR. *If you can't use HTTP Port 80 or 2000 due to use or your Internet Service Provider, use a different port in the same range. When selecting a different port, forward the IP address of the router to the new port and change the settings in the DVR Network settings. You will also need to add the new port to the end of the IP address in the browser window. For example, if you use port 83, you add :83 to the end of the IP address.

- 2 For instructions on how to forward ports on the most popular routers go to www.portforward.com. Click on the orange "Routers" link in the second paragraph, select your router from the list of router manufacturers, brand and model.



- 3 Click on the orange "Default Guide" link to view port forwarding instructions for your router.



- 4 Into the Internet Explorer address bar, enter the public IP address of the router the DVR is attached to. You can get this by going to www.myipaddress.com on a computer that is attached to the same router as the DVR.



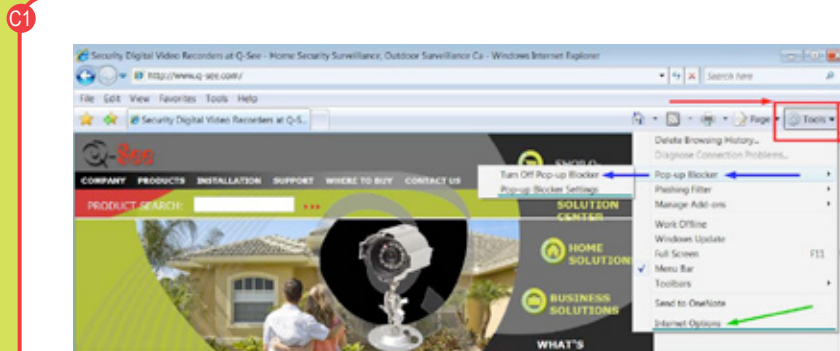
For additional help with forwarding ports on your router, please visit : www.portforward.com/qsee

B Accessing the DVR through a static or dynamic IP address
*Dynamic IP address can change from time to time depending on your Internet Service Provider.

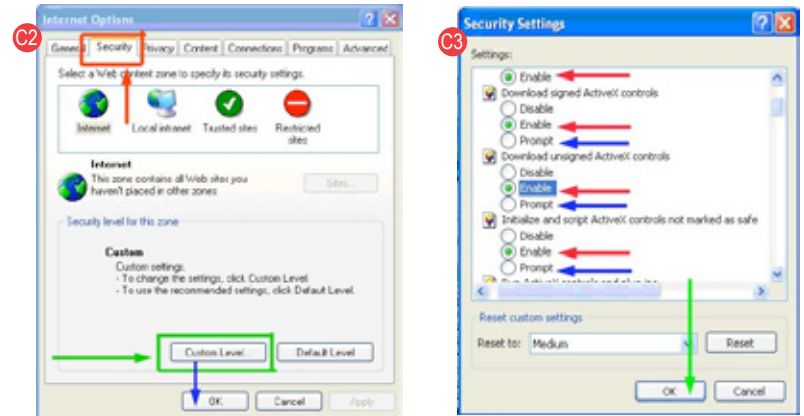
- 1 If the Dynamic IP address changes, you can find the new IP address by going to www.myipaddress.com on a computer that is attached to the same router as the DVR.
- 2 Two options:
 - a) Get a static IP address from your Internet Service Provider.
 - b) Use a dynamic domain name instead of IP address.
- 3 Dynamic domain name: Go to www.no-ip.com or www.dyndns.com Register and download the free web software on a computer that is connected to the same router as the DVR. Run the software and follow the on screen prompts to install. On some routers you can input the login information into the router instead of using the computer.

C Accessing the DVR through Internet Explorer Browser (IE):
Once the ports have been forwarded, you must modify your browser controls by allowing pop-ups. Go to Tools Option in Internet Explorer (Red Box below). Select the POP UP Blocker Option and turn off POP UP Blocker (Blue Arrows).

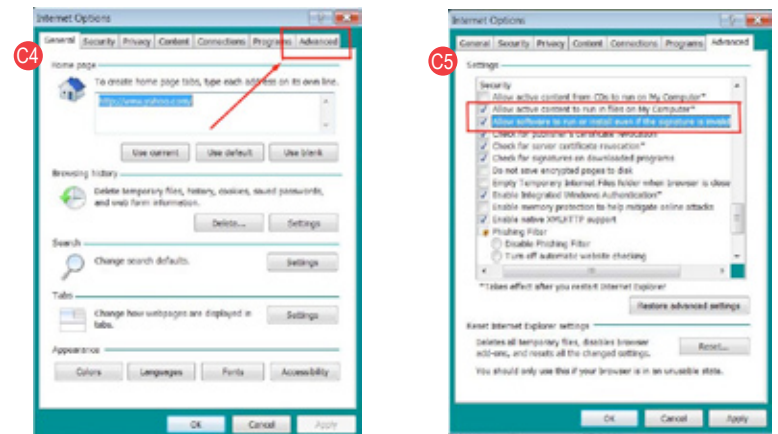
Enable the Active X Controls, go back up to the Tool Bar, and select Tools. Select from the drop down "Internet Options" (green arrow), prompting a new display window, shown on page 6 (C2).



Go to "Security" (Red Box C2), click on "Custom Level" (Green Box C2), click "OK". New window opens (C3), scroll down to Active X Controls and Plug Ins and set all to "Prompt" or "Enabled".



If you get an error message "Program Cannot Load" because the publisher is unknown or the program is unsigned, go to Internet Explorer, tools, internet options (C1) then click on the "Advanced" tab (Red Box C4). It will display window (C5). Scroll down to "Security", click on the options "Allow Software to Run or Install Even If the Signature is Invalid" and "Allow Active Content to Run Files on My Computer" (Red Box C5)



D Remote Viewing Window

When you connect you will see the remote viewing window shown below:



For information on the features of how to use the remote viewing program refer to the Users Manual. The login for the remote viewing program is the same as the DVR, user name is admin and password is 123456.

3 Enjoy



CONGRATULATIONS

on your purchase!

This Q-See product has undergone extensive quality control. If you have any issues during the setup process, please contact our support department before returning the product.

We have your solution!

- 1) Need assistance setting up the remote monitoring feature with your Q-See DVR? Visit www.portforward.com/qsee
- 2) Visit our Q-See Support Section at www.Q-See.com for instant troubleshooting tips, FAQs, DVR firmware downloads, Live Chat and More.
- 3) Contact our Support Team:



On the Web: (24/7) Visit the Technical Support Section
www.Q-See.com



By Phone (Monday thru Friday, 9am-5pm (PST))
Tech Support 1 (877) 998 3440, ext 539
Customer Service 1 (877) 998 3440 ext. 538



By Email:
ts@dpsi-usa.com

Quick Reference

Notes:



Free Manuals Download Website

<http://myh66.com>

<http://usermanuals.us>

<http://www.somanuals.com>

<http://www.4manuals.cc>

<http://www.manual-lib.com>

<http://www.404manual.com>

<http://www.luxmanual.com>

<http://aubethermostatmanual.com>

Golf course search by state

<http://golfingnear.com>

Email search by domain

<http://emailbydomain.com>

Auto manuals search

<http://auto.somanuals.com>

TV manuals search

<http://tv.somanuals.com>