

Quick Installation Guide

**For Bundles Featuring the QC444
H.264 Network DVR**
QC444-403/411/426



4 Channel H.264 Compression DVR with
Variable CIF and D1 Recording Options

Download from [Www.Somanuals.com](http://www.Somanuals.com). All Manuals Search And Download.

PART 1 - PACKAGE CONTENTS

4 Color Cameras with Stands
(403 & 411)

2 Color Cameras with Stands
2 Decoy Cameras (426)

Manual and
Software CD

QC444 DVR



Pre-Installed
Hard Drive



2 BNC(M) to RCA(F)
Adapters



Ethernet
Cable



Power Supply & 4-Way Splitter
(403 & 411)

Power Supply
for DVR



2-Way Splitter
(426)



Video and Power
Camera Cable



USB 2.0
Mouse



Remote
Control



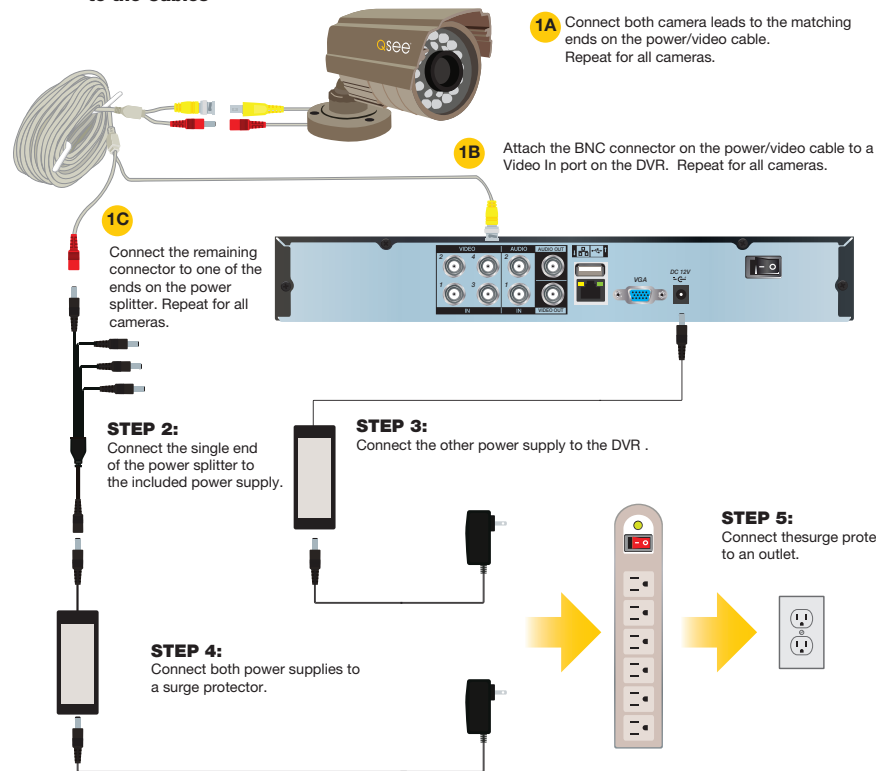
The appearance
of contents may
differ from images
shown.

Revised
5/18/11

Download from www.Somanuals.com. All Manuals Search And Download.

PART 2 - DVR CAMERA AND POWER CONNECTIONS

STEP 1: Connect the Cameras to the Cables



IMPORTANT! It is STRONGLY recommended to use a surge protector that is UL-1449 rated. Look for a clamping voltage of 330 or lower, a Joule rating of at least 400 and a response time of 10 nanoseconds or less.

PART 3 - CONNECTING THE DVR TO YOUR DISPLAY

To Connect to a TV:

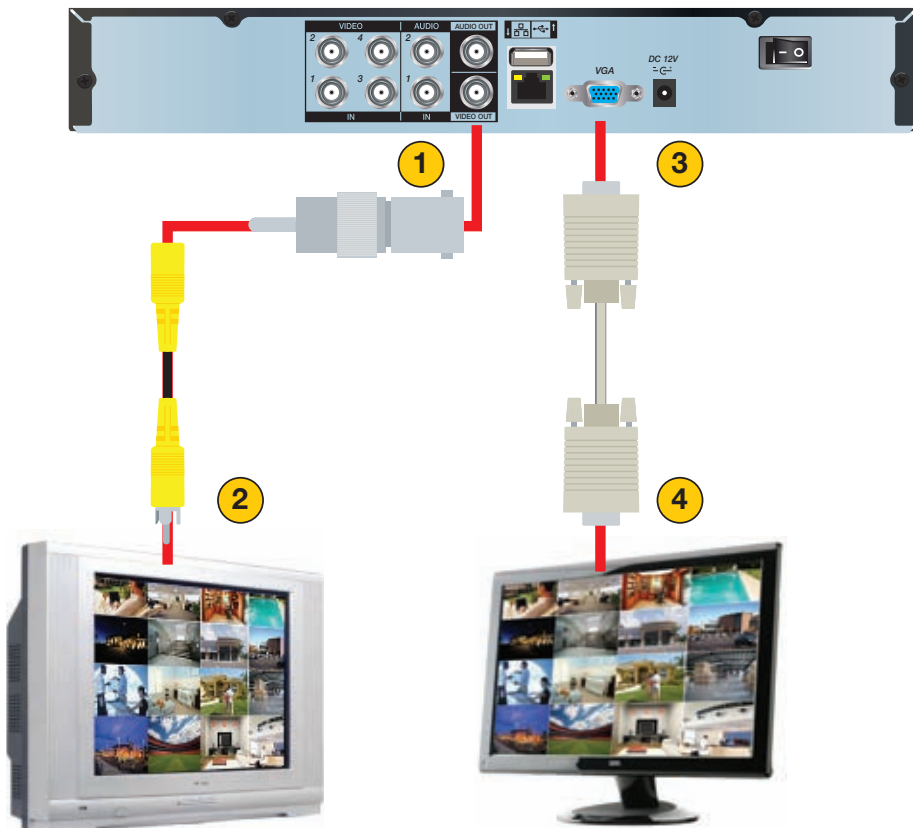
1. Plug the BNC to RCA adapter in to Video Out port then connect the RCA cable (not included) to the DVR.
2. Connect the other end of the RCA cable to the Video Input on the TV.

To Connect to a Computer Monitor:

3. Plug the VGA cable (not included) to the VGA port on the DVR.
4. Connect the other end of the VGA cable to the monitor.



NOTE! You may use both a video monitor and a television simultaneously with this DVR.

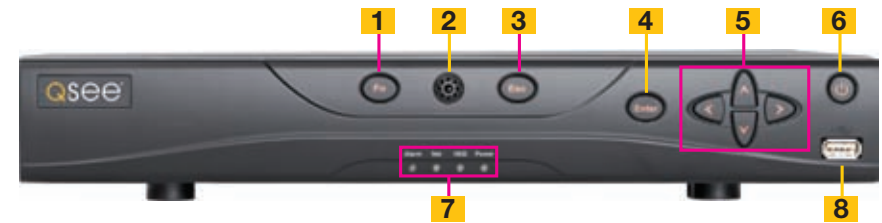


IMPORTANT! The default resolution of this DVR is 1024x768 pixels. Some monitors smaller than 19" may have problems displaying this resolution.

PART 4 - DVR CONTROLS

This DVR can be controlled through the USB mouse, the remote control or by using the buttons on the front panel of the device. We have found that the majority of our customers prefer to operate their DVRs using the USB mouse because of its ease of use and flexibility and our manual is set up with this in mind. The remote control allows you to perform most of the day-to-day functions from a convenient distance. It functions as a typical remote control with additional buttons allowing you to navigate through menus and control functions. We recommend that you configure your DVR using the mouse controls, reserving the remote control for operations such as live viewing, file search and playback.

FRONT PANEL

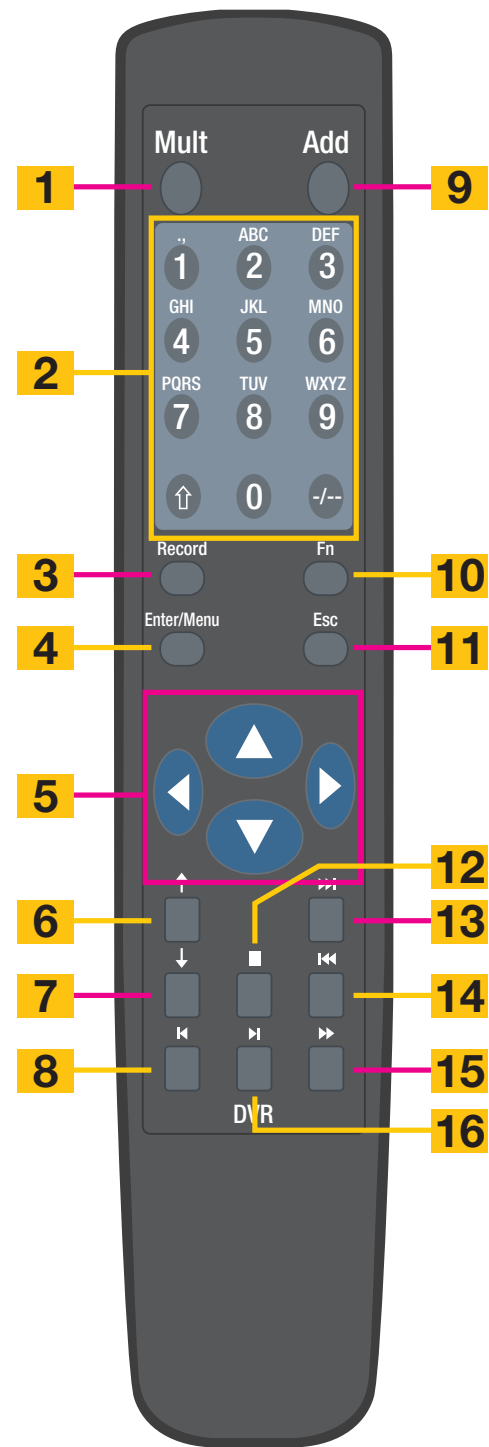


Number	Item	Function
1	Function Button	Single Channel Viewing Mode: Opens Color Adjustment Virtual Keyboard: Backspace function
2	IR Sensor	Infrared Receiver for Remote Control
3	Escape Button	Exit any menu or current operation
4	Enter Button	Viewing Mode: Go To Menu In Menu: Acts as mouse click
5	Directional Buttons	Navigate through menus. Change selections in pull down menus (Up/Down buttons) Toggle settings (Up/Down buttons)
6	Power Button	Puts DVR into Standby mode or wakes it up.
7	Status Lights	Alarm: Not functional on this model Net: Red light indicates that network connection is lost HDD: Red light indicates that hard drive is operating Power: Red light indicates that DVR is powered up
8	USB Port	For use with flash drive when backing up or updating firmware. Not for use with mouse.

REMOTE CONTROL

The buttons on the Remote Control operate in the same manner as on a conventional DVR remote. Some buttons have multiple functions depending on which menu is being accessed.

Num	Name	Function
1	Multiple-window switch	Switch between multiple-window and one-window view
2	0-9 number key	Input password, channel or switch channel.
3	Record	Start or stop recording manually In record interface, working with the direction buttons to select the channel to record
4	Enter /Menu key	Go to default button Go to the menu
5	Direction keys	Switch current activated control, go to left or right. In playback mode, it is to control the playback process bar.
6	Previous	In playback mode, playback the previous video.
7	Next	In playback mode, playback the next video.
8	Slow Play	Multiple slow play speeds or normal playback.
9	Address	Click to input device serial number
10	Function/Aux Key	In 1-channel monitor mode: pop up assistant function In motion detection interface, functions as a directional key to complete setup Backspace: Press for 1.5 seconds to clear all contents in current text box. In HDD information interface, used to switch between HDD record time and other information Special combined operation in some menus.
11	Escape/Cancel	Go back to previous menu or cancel current operation (close upper interface or control) In playback mode, it goes to real-time monitor mode.
12	Stop	In playback mode, stop current playback.
13	Forward	Various forward speeds and normal speed playback.
14	Backward	Various backward speeds and normal speed playback.
15	Play/Pause	Reverse playback or paused mode, click this button to realize normal playback. In normal playback click this button to pause or resume playback. In real-time monitor mode, click this button to enter video search menu.
16	Fast Forward	Various fast speeds and normal playback.



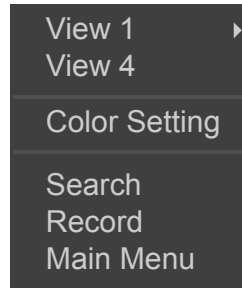
MOUSE CONTROL

The mouse operates in a manner similar to how it is used on a conventional computer; point-and-click, right-click, double click and so on. How these functions are used is based on the context of where they are used. Some examples are:

LEFT CLICK: Selecting an item
Opening a menu
Checking a box or motion detection status
Selecting letters, numbers or symbols on the virtual keyboard.

DOUBLE CLICK: Selecting an event for playback
Selecting a screen to zoom into from multi-screen mode

RIGHT CLICK Exits any window. Exits any menu or reopens previous menu.
Opens **Pop-Up Shortcut** Menu



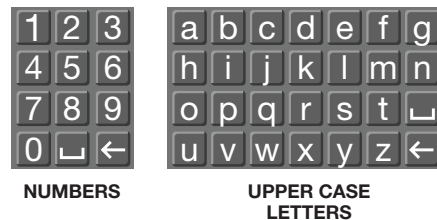
MOUSE WHEEL Page up or page down
Switch items in check box
Increase or decrease numerical value in numerical input box

CLICK-AND-DRAG Select motion detection zone
Select privacy mask zone

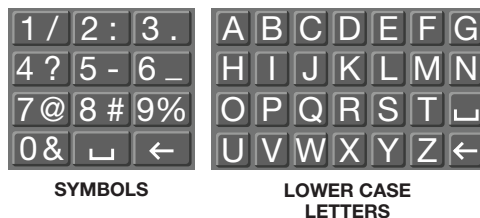
VIRTUAL KEYBOARD

The virtual keyboard is contextual. For example, it will only show digits when the field is for numeral entries. In fields where letters and symbols can be entered, users can switch between various formats – numbers, upper case, lower case and symbols – by selecting the white keyboard symbol that will appear to the right of a field where text can be entered. The symbol itself will change to show which keyboard format is available next.

Available keyboards include:



The keyboards are used by clicking on the desired character. Spaces are entered using the symbol and characters are deleted with the key. Clicking outside of the keyboard will close it.



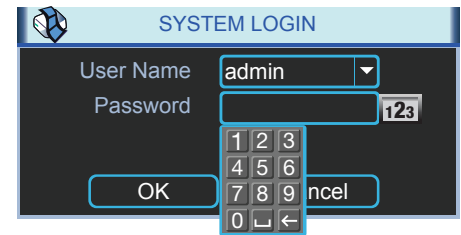
PART 5 - ACCESSING THE DVR'S MENUS

When the system boots up, it will be in multi-screen mode. Press **Enter** on the front panel, the **Enter/Menu** button on the remote control to bring up the **System Login** window. You can also right-click the mouse to bring up the **Pop-Up Shortcut** menu where you select **Main Menu**.

Log in using the Admin account using the virtual keyboard.

Username: **admin**

Password: **admin**



PICTURE 5-1

Once you have logged in, you will be presented with the **Main Menu**. There are 6 icons; **Search**, **Info**, **Setting**, **Advanced**, **Backup** and **Shutdown**.



PICTURE 5-2

SEARCH: Find and playback files from the hard drive.

INFO: Contains hard drive info, system log, version information, and online users.

SETTING: Most system configuration takes place in this window and its submenus. Access General settings to set system time, language, hard drive overwrite, file size, and video display format. The Encode submenu is where you set compression, frame rate, bit rate, audio, and sub stream. You will also find schedule setup, network setup, motion detection setup, display setup, and default settings here.

ADVANCED: Used for hard drive management, manual recording, account setup, auto maintenance, and TV output adjustment.

BACKUP: Backup files from the hard drive.

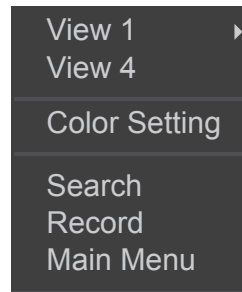
SHUTDOWN: Use this icon to safely shut down the system.

PART 6 - SETTING DVR TO RECORD

There are two modes for recording: **Manual Recording** and **Scheduled Recording**.

MANUAL RECORDING

You can get to the Manual Record menu by right clicking on the screen with the mouse and selecting **Record**.



PICTURE 6-1

This will take you to the **Record** menu. You can click the **All** option on the **Manual** row to start recording on all channels, or you can select only the cameras that you want to begin recording. To stop recording, select the **Stop** option under each camera to cause that camera to cease recording, or you can selecting the All option in the **Stop** row to cause all cameras to stop.



PICTURE 6-2

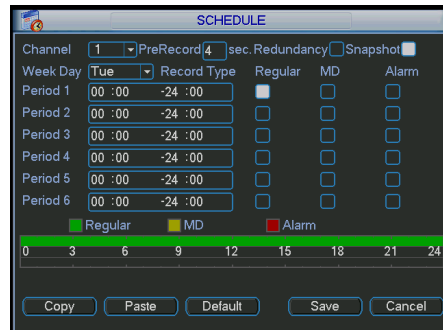
SCHEDULED RECORDING

To record on a schedule you will need to get to the **Record** menu as described above and select the cameras on the **Schedule** row instead of the **Manual** row.

Next, go to the **Main Menu**, and click on **Settings**, and select **Schedule**. This will open the **Schedule** menu.

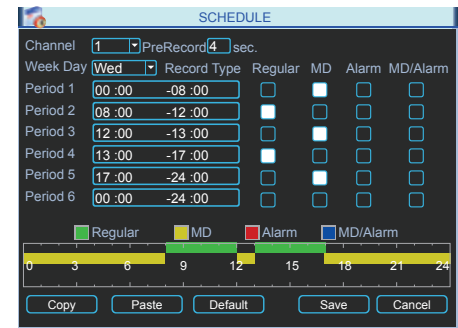
The DVR is programmed with all cameras set to record constantly by default. You may set up your own schedule to meet your specific requirements.

There are six blocks of time you can use to schedule recording and each camera can be individually configured or they all may share the same schedule. In addition, you may set up individual schedules for each day, or you may share the same schedule across every day. Cameras may be scheduled to record in different modes at different times of the day.



PICTURE 6-3

An example of such a mixed schedule is shown in **Picture 6-4**. In this example, Camera 1 is scheduled to record if motion is detected (MD) from midnight to 8am and then records continuously from 8am to noon (Regular) followed by a one-hour motion detection recording segment until 1pm before returning to continuous recording after that. Then, at the end of the day, it is in motion detection mode from 5pm to midnight. The scale running along the bottom of the menu ranges from 0 to 24, representing the hours of a day. You can set starting and ending times to any specific minute you choose.



PICTURE 6-4

Please note that this DVR does not support external alarms. Schedule settings utilizing Alarm recording will not produce any recordings.

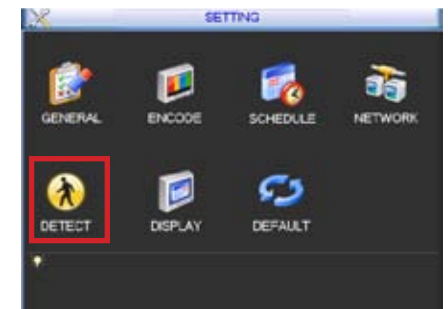
MOTION DETECTION RECORDING

There are three steps to scheduling the DVR to record on motion.

STEP 1. Return to the Record menu (**Picture 6-2**) and designate which cameras will be recording in Motion Detection mode.

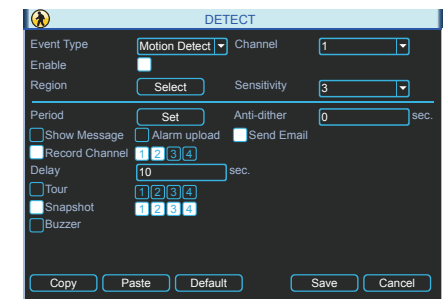
STEP 2. Next, go to the Schedule (**Picture 6-3**) menu as described above and set schedule for each camera.

STEP 3. After setting up the schedule go to the **Main Menu** and select the **Setting** menu. Inside, select the **Detect** window (**Red square in Picture 6-5**)



PICTURE 6-5

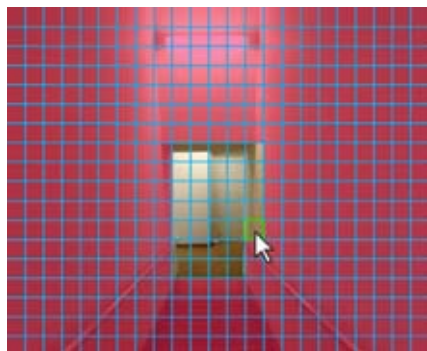
The Detect window will allow you to configure your camera and the actions the DVR will perform when motion is detected. Under Event Type select **Motion Detect**, Select your Channel, or All, and select the enable option to enable the camera for motion detection.



PICTURE 6-6

Next under **Region** click the **Select** button to set up the area of the camera display that you want to be sensitive to motion.

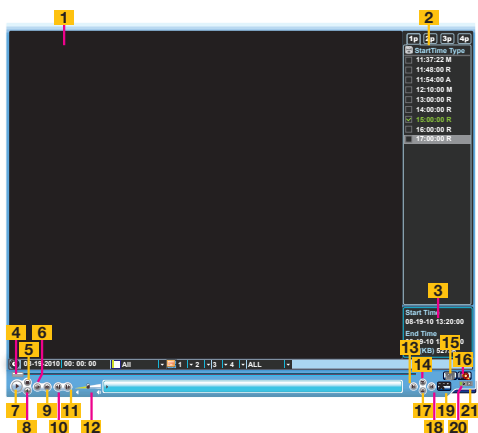
You will then see the camera's view overlaid with a grid. The green box is the current location of the cursor. The red area is the sensitive area and the black area is not sensitive to motion. Click the Fn button on the remote control to adjust the sensitivity of your mouse as you move the cursor. After you have finished the setup click the Enter button on the remote control to exit. Next set your sensitivity level from 1 to 6 (6 being the most sensitive), then click the Save button on the Detect screen to save the setting.



PICTURE 6-7

PART 7 - PLAYING BACK FILES

The **Search and Playback** window can be accessed through the **Shortcut menu**. You can view the playback from any camera that was activate during the recording session.



PICTURE 7-1

Number	Function	Number	Function	Number	Function
1	Playback Window	8	Reverse	15	Backup
2	File List	9	Fast Play	16	Search
3	File Information	10	Previous Frame	17	Next Channel
4	Playback Progress Bar	11	Next Frame	18	Next File
5	Stop	12	Volume	19	Video Clip
6	Slow Play	13	Previous File	20	Repeat Playback
7	Play	14	Previous Channel	21	Full Screen

The playback screen can be set to display the recordings from one camera or as many channels as you have.

SEARCH

To begin a search for an event:

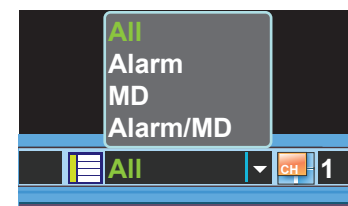
STEP 1. Enter the date to be searched.

You can also click on the clock icon to open the Calendar. Highlighted dates have recorded files.



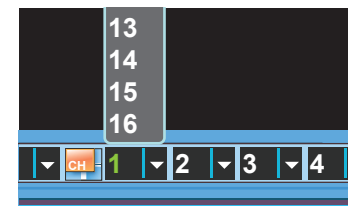
PICTURE 7-2

STEP 2. Enter the start time (if known) or skip this field to search the entire day. Select the type of event; **All**, **Alarm**, or **Motion Detection (MD)**.



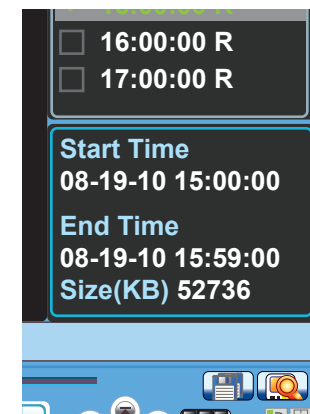
PICTURE 7-3

STEP 3. Select which channels you wish to view. Each of the four slots is a pull-down which allows you to select a specific channel. You can leave these empty to view 1-3 channels. You can also choose to view all four channels at a time simultaneously.



PICTURE 7-4

STEP 4. Click on the Search icon and any records fitting your criteria will be listed in the column to the right of the screen. Up to 128 files can be displayed and multiple tabs (pages) may be displayed in the search results depending on the number of cameras you have as well as how you configured your playback display. In the event that a camera is set to manually record, the events will be broken up by hour.



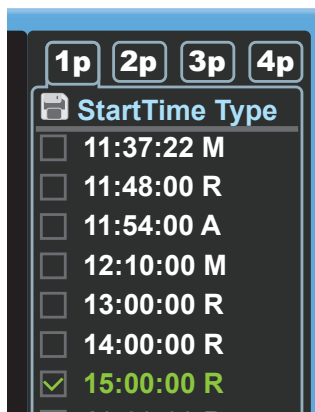
PICTURE 7-5

Files will be listed by their start time. In addition, when the DVR records a file, it also indicates the type of recording and it will indicate this one-letter code after the file name.

R = Regular recording

A = External alarm triggered recording

M = Motion detection triggered recording



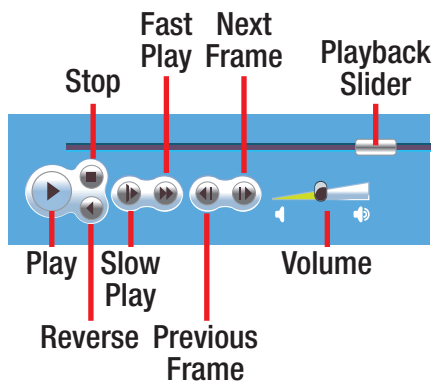
PICTURE 7-6

PLAYBACK

Once you've run your search, you may select which videos you wish to review.

Start, Stop and Play

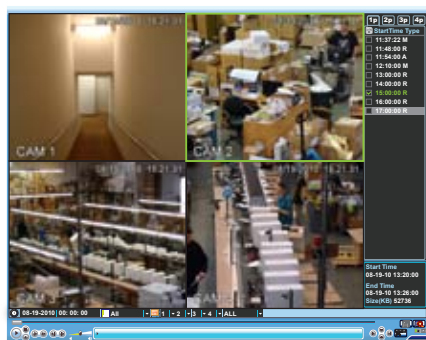
Double-click on the desired video file and playback will begin. The playback controls operate as with a normal DVD player or computer media player with pause, rewind, etc. In the case of multiple views, the channel with the green outline around its video is the one that is being controlled. You can switch between channels by clicking on the one you wish to control.



PICTURE 7-7

While all channels will display video from the same event, individual playbacks can be controlled separately. A single channel can be paused, rewound or sped up without affecting the playback of other channels.

Selecting the **Stop** button will end playback of that channel while the others (if any) continue to play back. To end playback on all channels, simply right-click the mouse or move to another file using the buttons to the right of the playback bar.

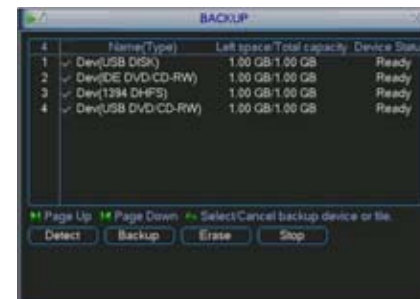


PICTURE 7-8

PART 8 - BACKING UP FILES

The DVR supports backing up to USB flash drives, hard drives, burners, and SD cards.

Plug in a USB device and go to the **Main Menu** and then clicking on the **Backup** icon will open the **Backup** window.

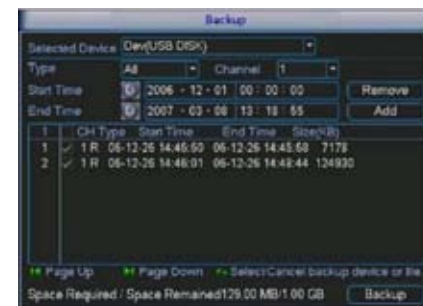


PICTURE 7-9

The **Backup** window will display any connected devices along with available space and status. If you have a device connected to the USB port on the side of the DVR and it does not appear, press the **Detect** button. If it still does not appear, then use a different USB device.

Once an external USB device is detected, pressing the **Backup** button will open a new window allowing you to select which files to back up. You can select by channel, start and end times, as well as which type of event; regular recording, alarm, motion detection or all of them.

Only files with a check mark in front of them will be backed up. You can deselect whichever files you choose or select them all by selecting the box at the top of the list.



PICTURE 7-10

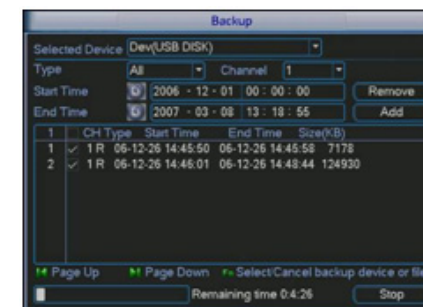
If you need to clear space on your external drive, you can use the **Erase** button. This will delete **ALL** files on that device.



IMPORTANT! USB hard drives must be formatted as FAT 32.

Once you have selected the files, press **Start** to begin the download. A progress bar will be displayed showing estimated time remaining. During the download, the **Start** button will change to **Stop**. You can stop the process at any time by pressing the button again.

You can also right-click out of the menu once the file transfer has begun to go on to other activities without cancelling the download.



PICTURE 7-11

The files will be saved with the following naming format:

SN_CH(channel number)_TYPE_TIME(Year, Month, Date, Hour, Minute, Second)

Therefore, a file shown on the DVR as being a regular record (R), being recorded on 01/04/11 starting at 2:00:00 would have a file name of: 1_01_R_010411020000.dav

The files can be played back using the software included on the CD accompanying this DVR.



QUESTIONS OR COMMENTS? CONTACT US

MAILING ADDRESS

Q-See Products

Digital Peripheral Solutions, Inc.

8015 E. Crystal Drive

Anaheim, CA 92807

FAX

714-998-3509

WEBSITE

www.Q-See.com

PRODUCT SUPPORT, DOWNLOADS, FIRMWARE UPDATES & MANUALS

www.Q-See.com

CUSTOMER SUPPORT

Live Chat at www.Q-See.com (M-F, 9-5 PST)

Email: support@dpsi-usa.com

Phone: 877-998-3440 (M-F, 9-5 PST)

Free Manuals Download Website

<http://myh66.com>

<http://usermanuals.us>

<http://www.somanuals.com>

<http://www.4manuals.cc>

<http://www.manual-lib.com>

<http://www.404manual.com>

<http://www.luxmanual.com>

<http://aubethermostatmanual.com>

Golf course search by state

<http://golfingnear.com>

Email search by domain

<http://emailbydomain.com>

Auto manuals search

<http://auto.somanuals.com>

TV manuals search

<http://tv.somanuals.com>