

# Qsee® QSTD Series Port Forwarding Instructions

**NOTE!** The DVR and PC must be connected to the same router.

Port Forwarding allows computers and devices outside of your network to communicate with the DVR. You will need to forward ports 80 and 6036 from the attached router to the IP address of the DVR. Your router must be powered up and attached to the DVR before proceeding.

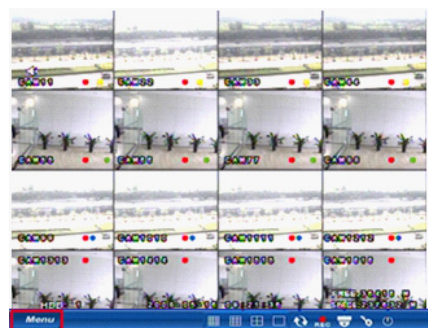
Things you will need to know :

1. The make and model of the router.
2. If you changed the default router login, then you will need to know the user name and password for that router.
3. The IP address for the router.
4. You will be forwarding ports **80** and **2000**.

## SECTION 1: DETERMINING THE IP ADDRESS OF DVR

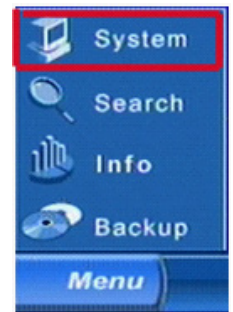
To find out the IP of DVR for QSTD series DVRs do the following:

**STEP 1.** Right-click the mouse to display the **Menu Bar** at the bottom of the display.  
Click on the **Menu** icon.



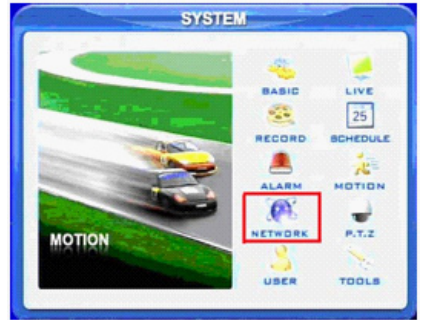
PICTURE 1

**STEP 2.** This will bring up the **Main Menu** where you click on **System**.



PICTURE 2

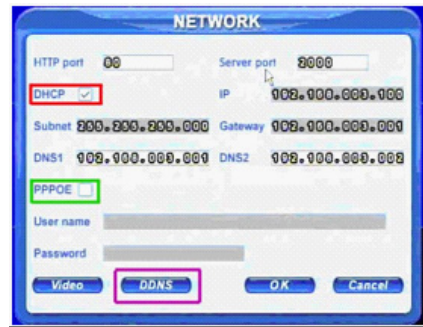
**STEP 3.** Select **Network** (Red box in **Picture 3**) in the **System Menu** window.



PICTURE 3

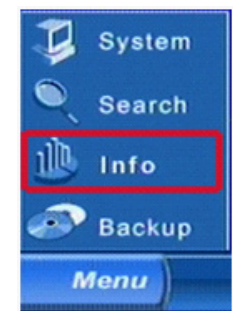
**STEP 4.** This is the **Network Setup** window. Put a checkmark in the DHCP option box (Red box in **Picture 4**)

Click **OK** button for the router to assign the DVR an IP address



PICTURE 4

**STEP 5.** After the router has assigned the DVR an IP address, go back to the **Main Menu** and click on the **Information** icon



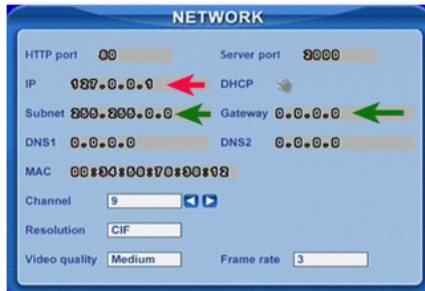
PICTURE 5

**STEP 6.** Click on the **Network** Icon



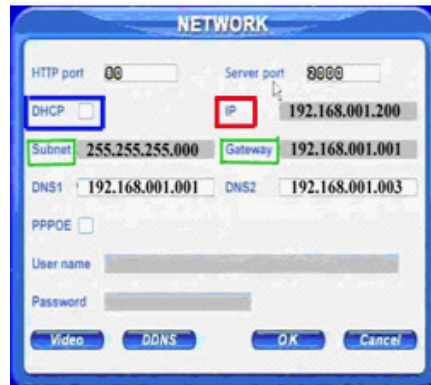
PICTURE 6

**STEP 7.** Write down the IP address, Subnet Mask, and Gateway assigned by the router.



**PICTURE 7**

**STEP 8.** Return to the **Network Setup** window in **Step 4** and enter the information into the appropriate fields.



**PICTURE 8**



**NOTE!** If you have a 2Wire brand router, you may now click on **OK** and proceed to Section 2 and determine the number of routers on your system.

**STEP 9.** To prevent the router from changing your address information, remove the checkmark for DHCP (Blue box in **Picture 8**) and click on **OK** to save your settings.

## SECTION 2: DETERMINE THE NUMBER OF ROUTERS ON THE NETWORK

To find out the number of routers on your network, you will need to download a **FREE** router detection program.

**STEP 1.** Go to <http://www.pcwintech.com/shanes-toolbox>

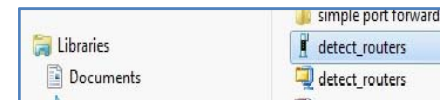
**STEP 2.** Click on **Detect Multiple Routers** to begin the download.



**PICTURE 9**

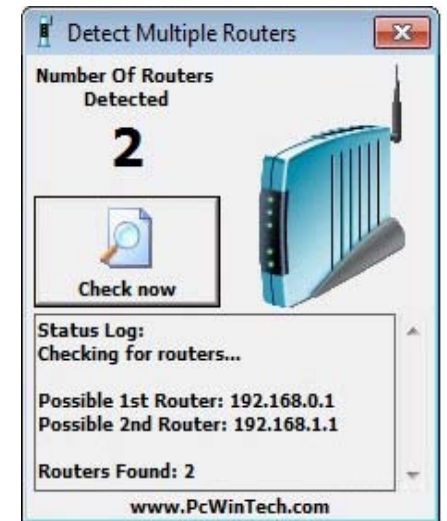
**STEP 3.** Unzip the application to install it.

**STEP 4.** Click on the **detect\_routers** application to run it.



**PICTURE 10**

**STEP 5.** Click on **CHECK NOW** to detect how many Routers are in the network.



**PICTURE 11**

**STEP 6.** If there is only one router detected, then you may skip to **Section 3: Simple Port Forwarding**.

### If Multiple Routers are Detected

If there are multiple routers, you will see a display similar to **Picture 12**.

If so, it may be preferable to connect your DVR and computer to the router that connects directly to the Internet. However, this is not always possible depending upon your particular situation.



**PICTURE 12**

In this case, you will need to proceed with the next section using the IP address for Router 1 to forward its ports. After that, you will need to proceed to **Section 4**.

## SECTION 2: DOWNLOAD SIMPLE PORT FORWARDING PROGRAM

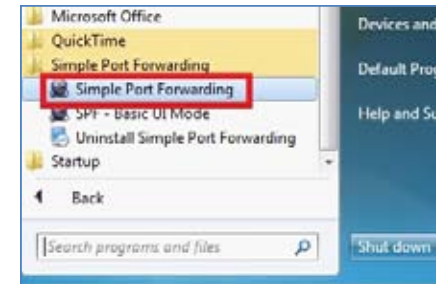
Download the **FREE** Simple Port Forwarding program from:  
<http://www.simpleportforwarding.com/download>

Click on **Download on Mirror 7** to download and install this program.



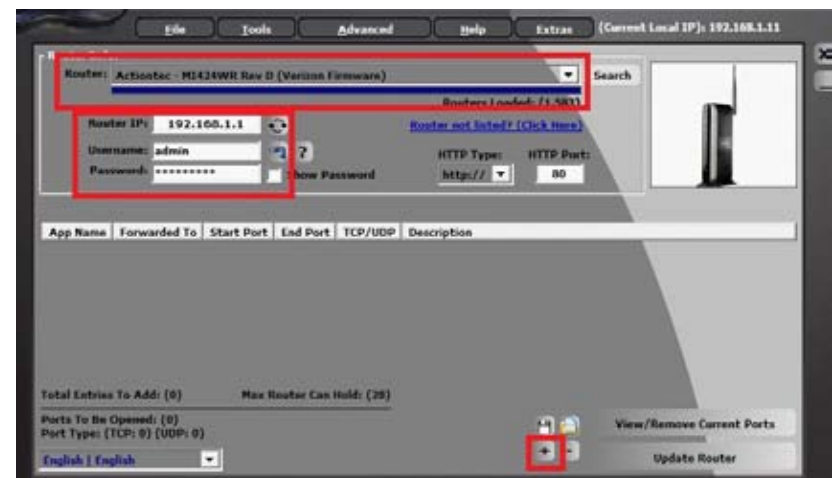
**PICTURE 13**

Once the program is installed, go to the Windows **Start Menu** (Windows icon in the lower left of your monitor) and look for **Simple Port Forwarding** in the program list. Click on the program to launch it.



**PICTURE 14**

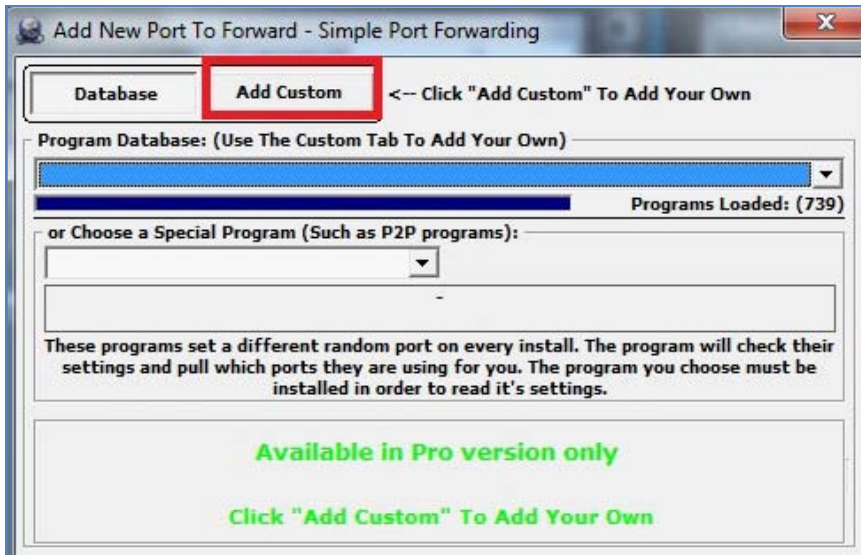
Once **Simple Port Forwarding** has launched, select your router from the list. The default Router IP and Login information will automatically come up. If you have previously changed the login information, then you will have to enter it manually



**PICTURE 15**

Click on **+** at the bottom to open the window allowing you to set your ports.

Click on **ADD CUSTOM**.



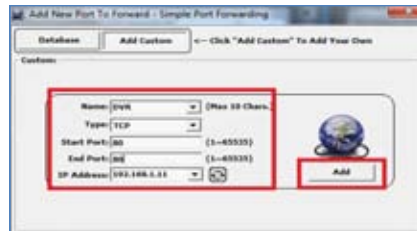
PICTURE 16

Input the required information:

Name: (You can name your DVR if you wish)  
Type: TCP  
Start Port: 80  
End Port: 80  
IP add: IP of DVR obtained in **Step 1**.

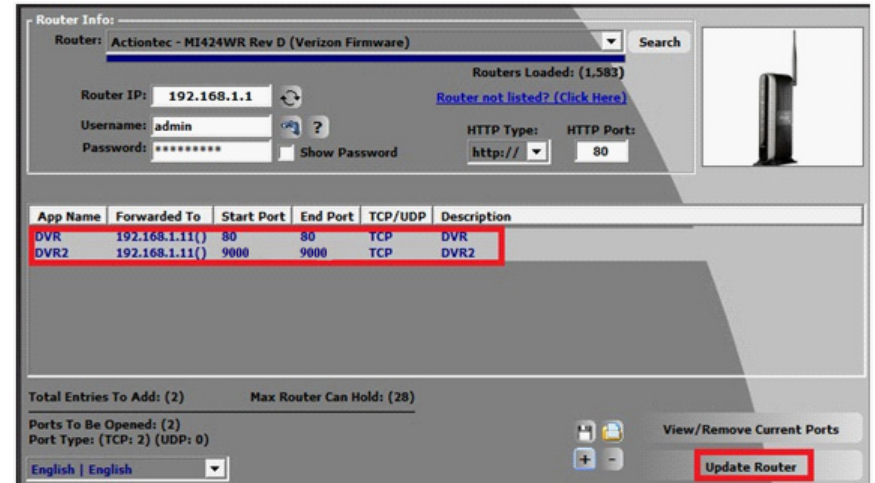
Click on **ADD**

Repeat for port 6036.



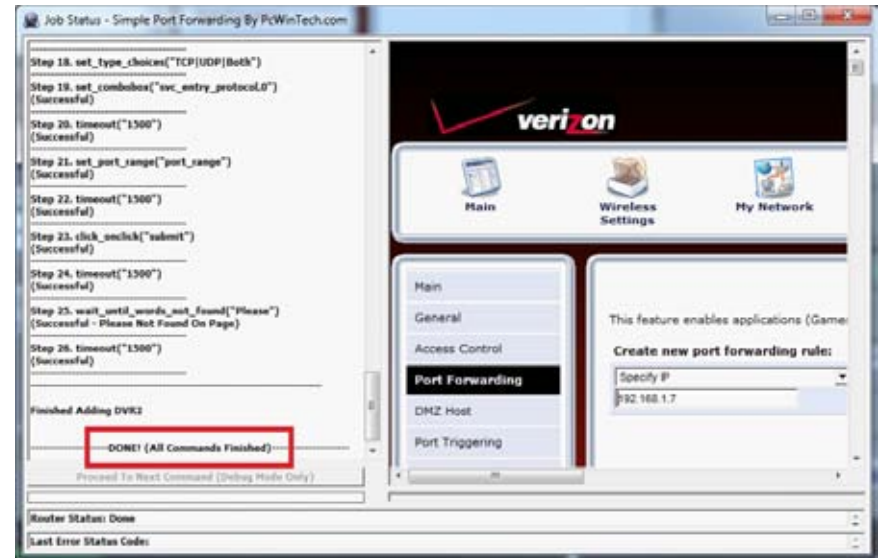
PICTURE 17

You will now be returned to the main window of the program. The ports you added will now show on the list. Click on **Update Router** at the bottom.



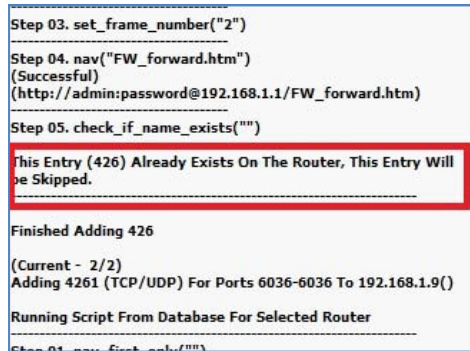
PICTURE 18

You will see the "Updating is in progress" message. Please wait until you see it say **DONE** at the bottom.



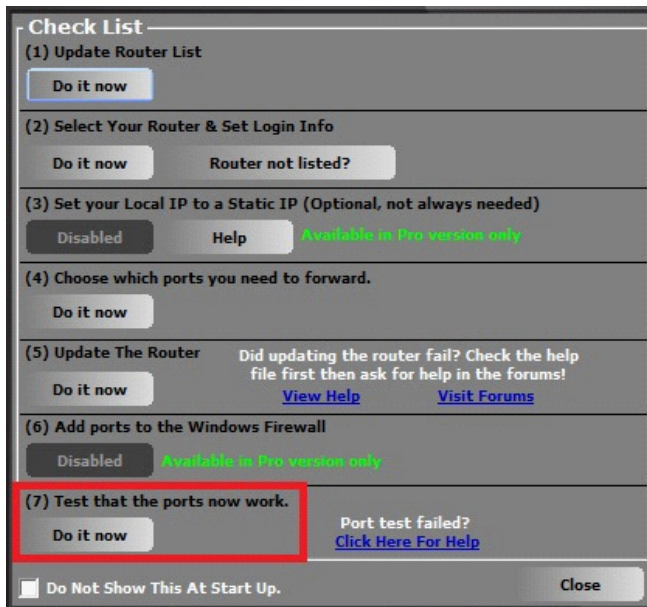
PICTURE 19

If for some reason, a port or ports that you forwarded are not listed in the Router and if you see a message in the Scripts list on the left side of the window stating that the port already exists (**Red box in Picture 20**), then you will need to change the Port 80 to 85 in the DVR and start over again.



PICTURE 20

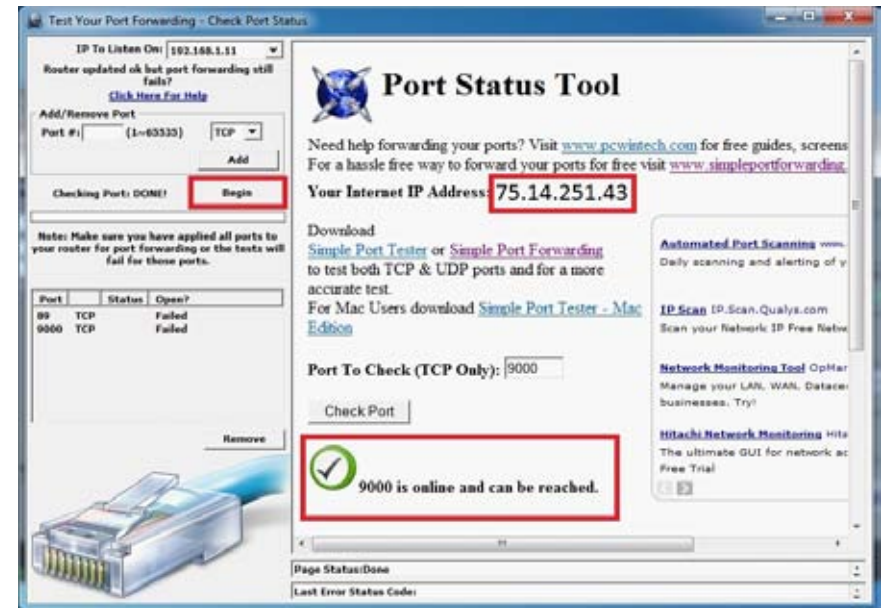
Once you receive the **DONE** message that the ports have been successfully forwarded, test if the ports are working by clicking on item number 7 in the **Check List - Test that the ports now work.**



PICTURE 21

Click on **Begin**.

If you receive a message stating that the port is online and can be reached, then you have set it up correctly.



PICTURE 22

To connect to your DVR from the Internet, you will need to put the Internet IP address shown after "**Your Internet Address:**" message into the browser or access program window.

If you are forwarding any other port instead of port 80, then you need to put that port's number at the end of the address.

**Example:** if you use port 85, you will need to enter: <http://75.14.251.43:85>

Instructions for using the Supercam software on your smartphone can be found on the CD that came with your DVR, or it can be downloaded by clicking on the links below:

**Android:** <http://q-see.com/files/DeviceFiles/T-Android.pdf>

**BlackBerry:** BlackBerry phones are not supported on these models

**iPhone:** <http://q-see.com/files/DeviceFiles/T-iPhoneAccess.pdf>

**Symbian:** <http://q-see.com/files/DeviceFiles/T-Smart Phone Access Symbian.pdf>

**Windows Mobile:**

<http://q-see.com/files/DeviceFiles/T-Smart Phone Access Windows Mobile.pdf>

## SECTION 4: SETTING UP DMZ IN ROUTER 2



**NOTE!** You will only need to proceed with this section if you detected a second router in **Section 2**.

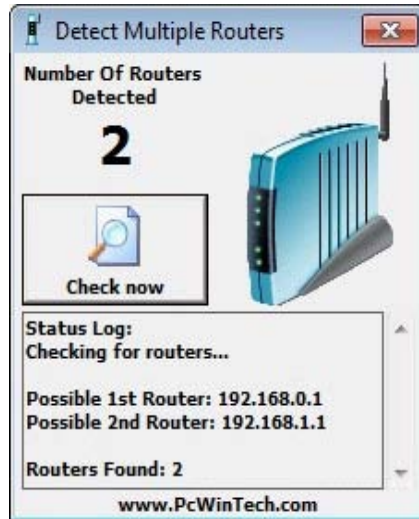
**STEP 1.** Login into Router 1 by putting the IP of Router 1 into the Internet Explorer browser, as in the example shown in **Picture 23** where the IP address of Router 1 is 192.168.0.1

**STEP 2.** Find the status page on the router settings that shows the WAN/Internet IP address and write it down this WAN IP address.

**STEP 3.** Log into the Router 2 by putting the IP of Router 2 into the Internet Explorer browser, as in example shown in **Picture 23** where the IP address of Router 2 is 192.168.1.1

**STEP 4.** Find the **DMZ** page in the router settings.

**STEP 5.** Enter the WAN IP for Router 1 into the **DMZ** page and enable DMZ.



**PICTURE 23**



**NOTE!** If you do not have a **DMZ** setting in the router, check to see if there is a **Bridge** setting. If so, then use the **Bridge** setting instead of DMZ.

**STEP 6.** Save your changes.

You have forwarded the ports on the router to which the DVR is connected, to the IP address of the DVR, and set the primary router to pass the connection to this router.

## Free Manuals Download Website

<http://myh66.com>

<http://usermanuals.us>

<http://www.somanuals.com>

<http://www.4manuals.cc>

<http://www.manual-lib.com>

<http://www.404manual.com>

<http://www.luxmanual.com>

<http://aubethermostatmanual.com>

Golf course search by state

<http://golfingnear.com>

Email search by domain

<http://emailbydomain.com>

Auto manuals search

<http://auto.somanuals.com>

TV manuals search

<http://tv.somanuals.com>