

## QSZ515D

### HOW TO SETUP CRUISE ON QT SERIES DVR (from INTERNET EXPLORER)

In these instructions, we will explain how to setup Preset and Move camera from presets back and forth from Internet Explorer (Your PTZ camera must be setup already and can be controlled by the DVR)

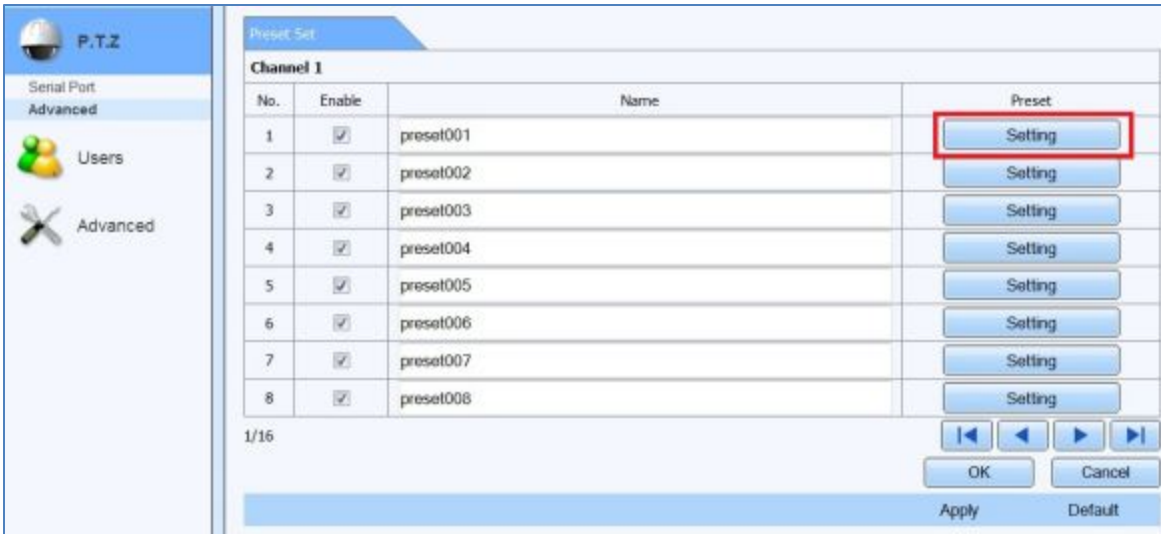
1. From your PC connect to the DVR using Internet Explorer and click on CONFIG tab.



2. Under the PTZ option, click on ADVANCE and then click on SETTING under Preset for CH1 (if the PTZ camera is attached to CH1 otherwise select the Channel location of the camera).



3. Click on SETTING again



4. Select Preset 1 and click the Left arrow to move the camera to left side until you find the spot where you want the camera to start, then click on the Save button



5. Select Preset2 and click on Right arrow to move the camera to the right side until you find the spot where you want the camera to end, and click on Save then click on Exit



6. Go back to the main camera live screen and select Preset 101 and click on Enter button to start moving the camera from left to right and back and forth.



PRESET LIST			
Preset99	ERASE PRESET		
Preset 101 or 102	MOVE FROM PRESET TO PRESET		
Preset 125	MOVING CAMERA AROUND		
Does not support Cruise function from DVR			
Does not have Focus and Iris function			

## Free Manuals Download Website

<http://myh66.com>

<http://usermanuals.us>

<http://www.somanuals.com>

<http://www.4manuals.cc>

<http://www.manual-lib.com>

<http://www.404manual.com>

<http://www.luxmanual.com>

<http://aubethermostatmanual.com>

Golf course search by state

<http://golfingnear.com>

Email search by domain

<http://emailbydomain.com>

Auto manuals search

<http://auto.somanuals.com>

TV manuals search

<http://tv.somanuals.com>