



The Solo T1 DSU

Providing a new level of versatility for broadband access.

Main Features:

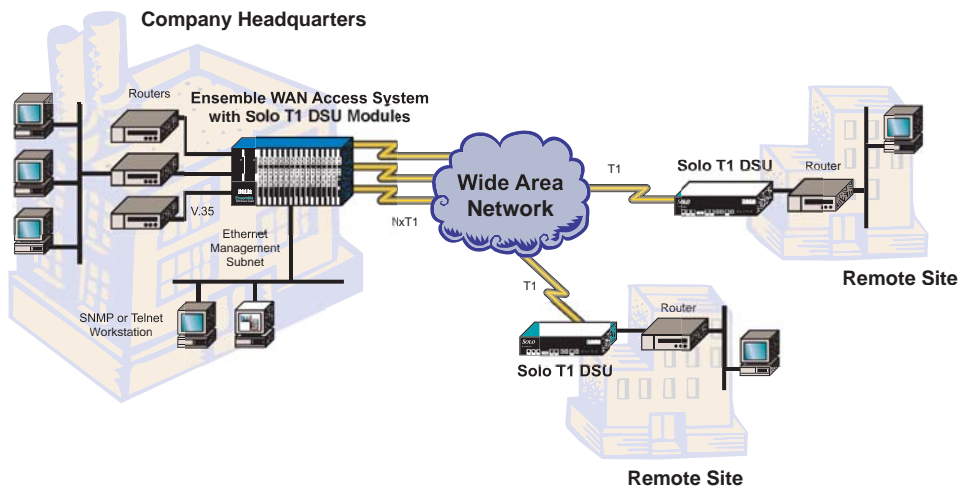
- Fully SNMP-manageable
- Telnet management access via COMM port
- Alarm dial-out connection for unattended remote operation
- Extensive diagnostic features:
 - Front-panel LEDs
 - Built-in test patterns, test loops, and diagnostic tests
- Non-disruptive downloadable code for easy upgrades
- Available in stand alone and chassis-based module versions

Quick Eagle's Solo T1 DSU™ is a full-featured, single port DSU that provides a versatile, cost-effective interface between high-speed data terminal equipment (DTE) and public or private T1 networks. It features a software-selectable DTE interface, which can be configured for RS-449/EIA-530 or V.35. Bandwidth allocation, also software selectable, allows you to configure the Solo T1 DSU for data rates from 56 kbps up to a full T1 data rate of 1.536 Mbps.

You can manage the Solo T1 DSU from a Telnet or local VT-100-compatible terminal. It can also be managed from a management station located at a central site. The Solo T1 DSU supports the industry-standard Simple Network Management Protocol (SNMP) management information base (MIB II). It also features a device-specific enterprise MIB that allows you to configure, monitor and control all significant operating parameters.

The Solo T1 DSU offers an extensive suite of diagnostic capabilities for local and remote fault analysis, and features more than a dozen user-settable alarm parameters and performance thresholds for remote alarm reporting.





Solo T1 DSU

Access Speed	T1
Network Interface	
Line Rate	1.544 Mbps ± 50 bps
Connector Type	DA-15 socket
Line Code	AMI, B8ZS
Framing	D4, ESF
Output Level	0, -7.5, or -15 db LBO
Input Level	-24 dB0
System Timing	Network, data port, or internal
Data Interface	
Port	RS-449/EIA-530 or V.35
Data Rate	Nx56/64 kbps, (N = 1 through 24)
Connector Type	DB-25 socket
Management Connectors	
COMM Port	DE-9 socket
Power Requirements	
Voltage	110 VAC, -48 VDC
Consumption	6 W maximum
Regulatory	
	FCC Part 15, FCC Part 68
	UL 1459, UL 1950; IC, CUL
	VCCI Class 1
Diagnostics	
Loopback Tests	T1 network, T1 payload, fractional T1 payload, loop-up/loop-down commands, and DTE
Test Patterns	1:1, 1:2, 1:4, 1:8, 3:24, QRW, all Os, all 1s, smart jack, two user programmable 24-bit patterns
Network Alarms	Net carrier loss, net sync loss, net AIS received, net yellow received, CRC, BPV, OOF threshold
Data Port Alarms	RTS loss, DTR loss
Front-panel LEDs	Power/test, network status, network loopback, remote loopback, DTE loopback, TD, RD, CTS, RTS, DTR
Physical	
Stand-alone Dimensions	22.2 cm (8.75 in) W x 4.45 cm (1.75 in) H x 29.2 cm (12 in) D
Weight	3.0 kg (6.5 lbs)
Module Dimensions	1.90 cm (0.75 in) W x 21.92 cm (8.63 in) H x 20.96 cm (8.25 in) D
Weight	0.34 kg (0.75 lbs)
Environmental	
Operating Temperature	0° - +50° C
Storage Temperature	-20° - +60° C
Relative Humidity	0% - 95% non-condensing
Maximum Altitude	4,572 Km (15,000 ft)



Headquarters

Quick Eagle Networks (USA)
830 Maude Avenue
Mountain View, CA 94043
+1 650-962-8282 Phone
+1 650-962-7950 Fax

info@quickeagle.com

www.quickeagle.com

Northern, Central & Eastern Europe

info_uk@quickeagle.com

Southern Europe, Middle East & Africa

info_france@quickeagle.com

Asia / Pacific Rim

info_apac@quickeagle.com

Latin, Central & South America

info_southamerica@quickeagle.com

Canada

info_ca@quickeagle.com

© 2007 Quick Eagle Networks. All rights reserved.

PDF/05/07

The information presented herein may change without notice and should be used for informational purposes only. Solo T1 DSU is a trademark of Quick Eagle Networks. All product and service names mentioned are trademarks of their respective owners.

Free Manuals Download Website

<http://myh66.com>

<http://usermanuals.us>

<http://www.somanuals.com>

<http://www.4manuals.cc>

<http://www.manual-lib.com>

<http://www.404manual.com>

<http://www.luxmanual.com>

<http://aubethermostatmanual.com>

Golf course search by state

<http://golfingnear.com>

Email search by domain

<http://emailbydomain.com>

Auto manuals search

<http://auto.somanuals.com>

TV manuals search

<http://tv.somanuals.com>