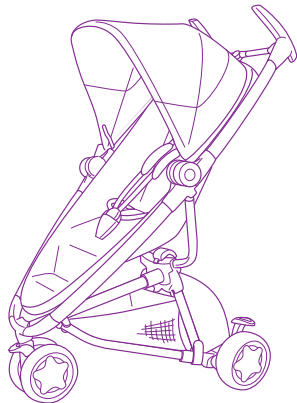




Instructions for use
& Warranty

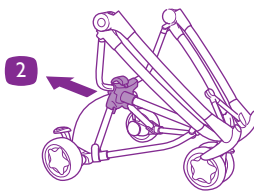
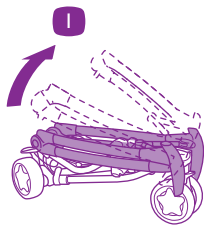


zapp xtra

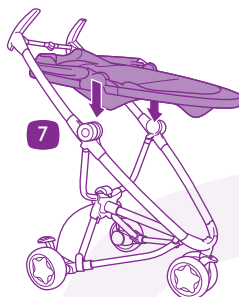
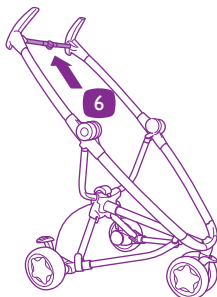
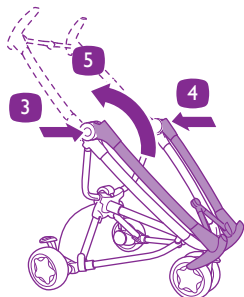
Use _____	3
Safety, warranty, general information _____	20
Legend _____	23

Use

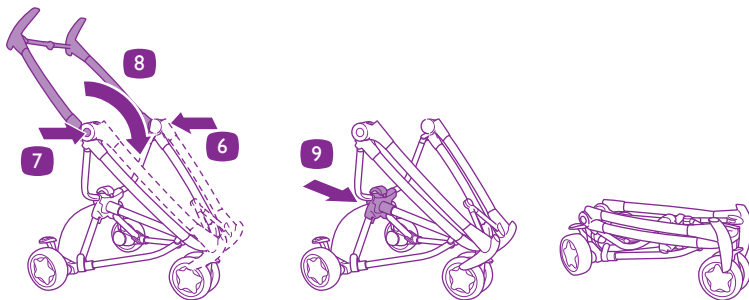
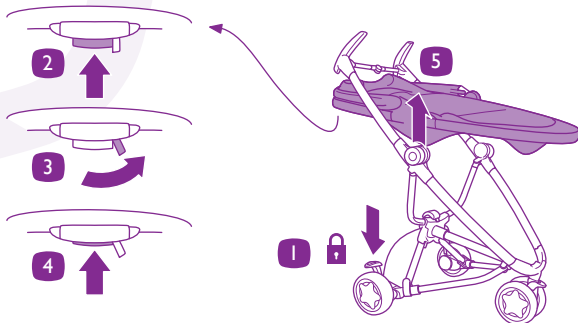
Unfolding _____	3
Folding _____	4
Harness _____	5
Seat _____	7
Wheels _____	8
Canopy _____	10
Footrest _____	10
Adapters _____	11
Raincover _____	12
Shopping basket _____	13
Fabric _____	14
Accessories _____	19



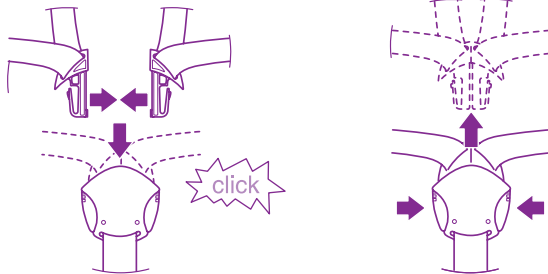
Please see instruction movie on
www.quinny.com



Pushchair / Folding



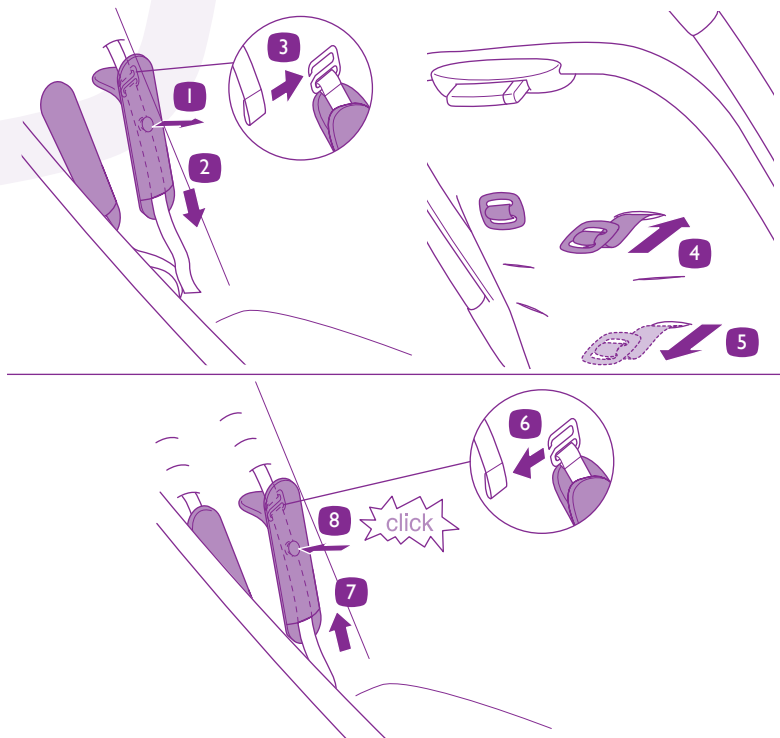
Harness / Closing - Opening



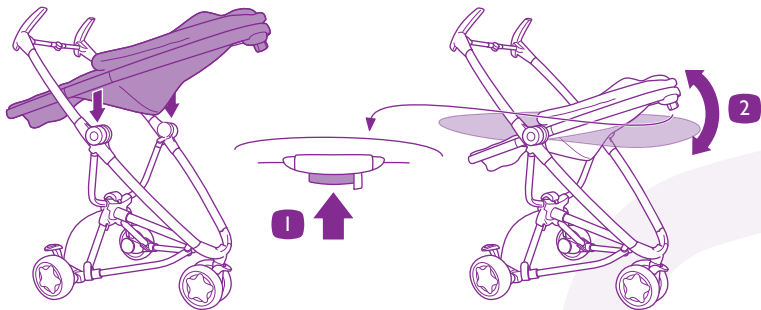
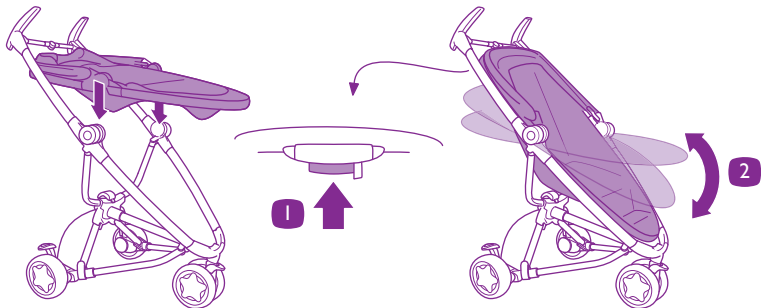
Length



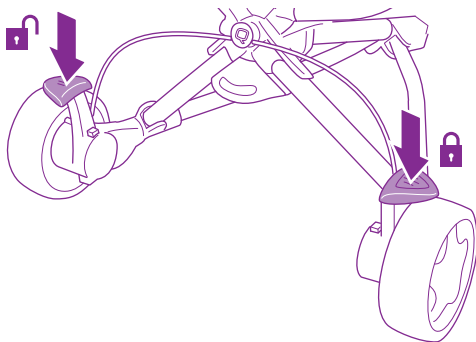
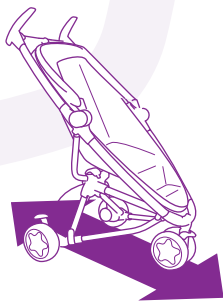
Harness / Adjust height



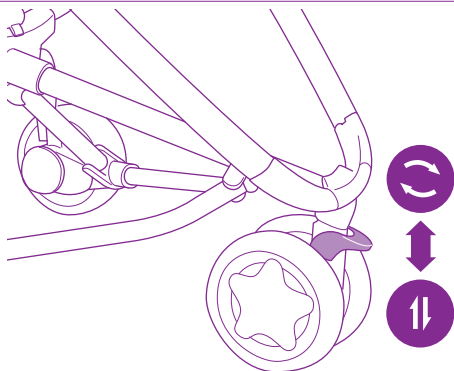
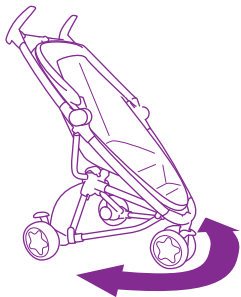
Seat / Rearward / forward facing



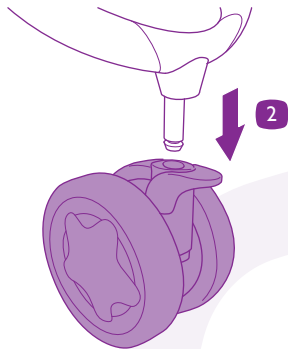
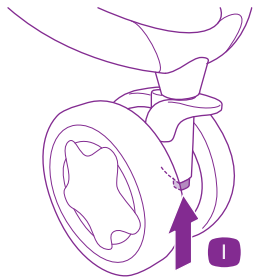
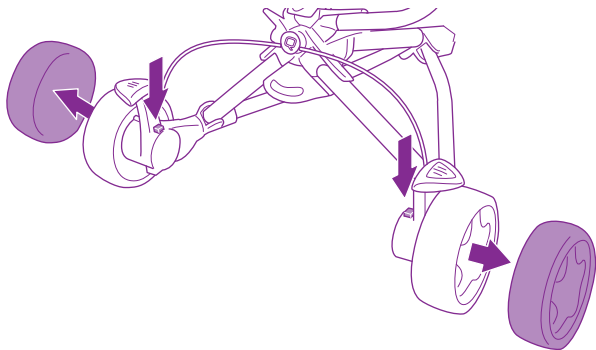
Wheels / Brake



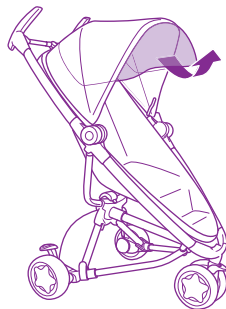
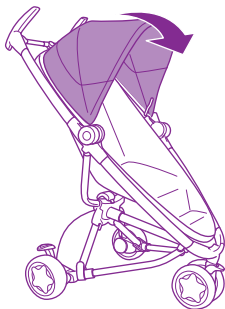
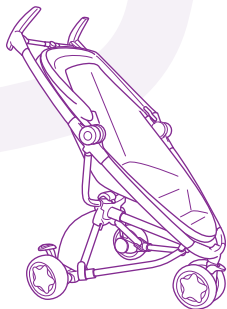
Swivel lock



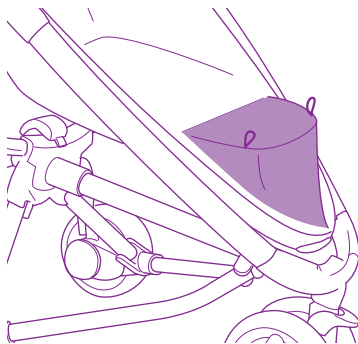
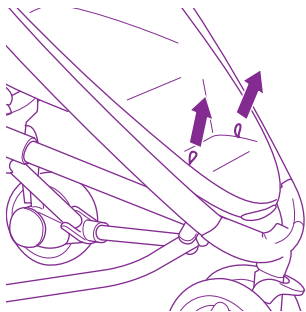
Wheels / Remove

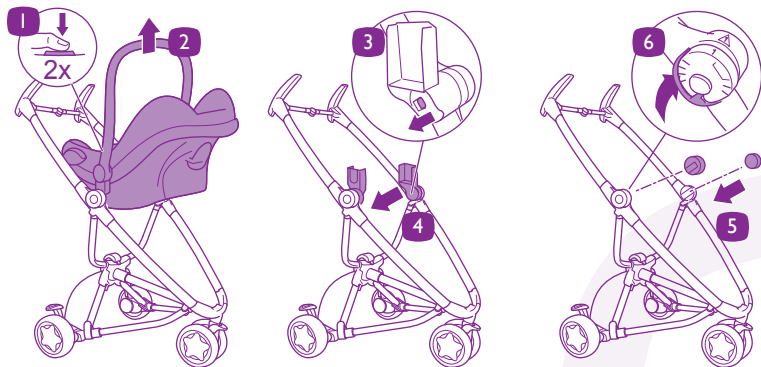
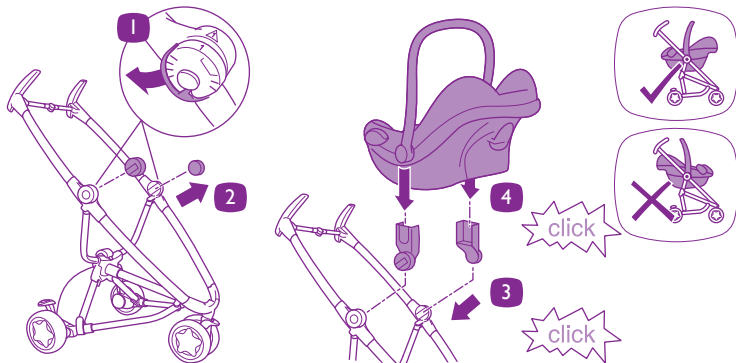


Canopy / Use

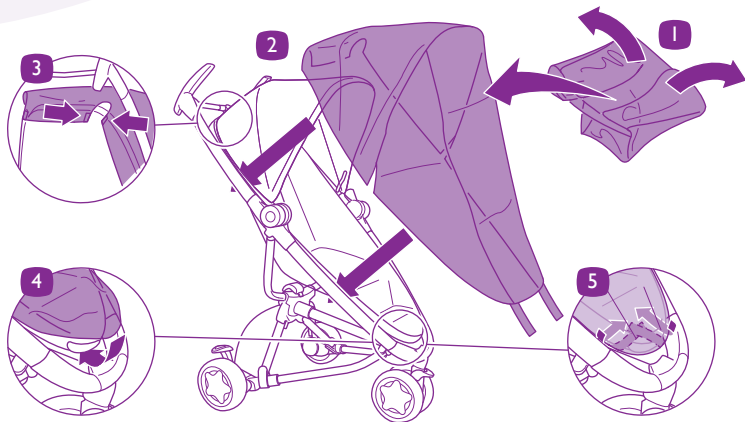


Footrest / Use

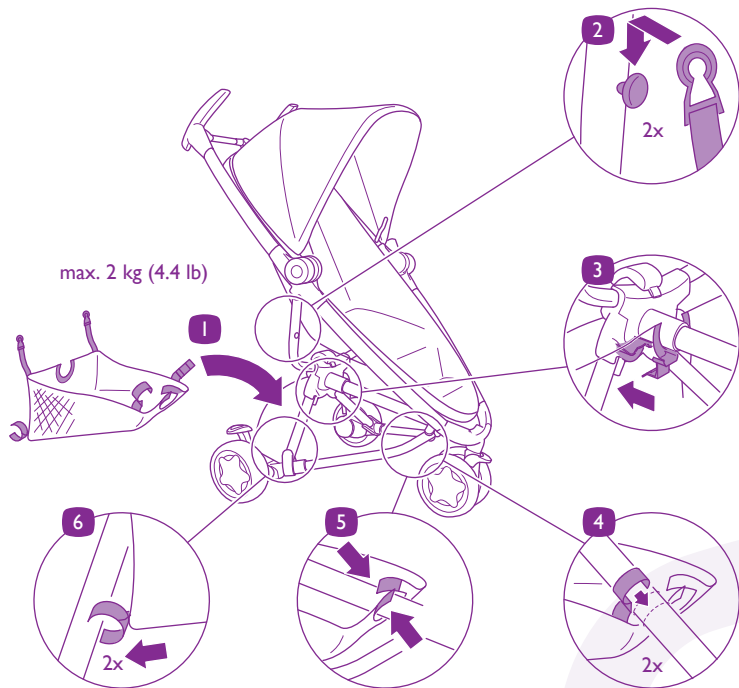




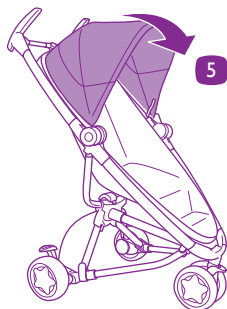
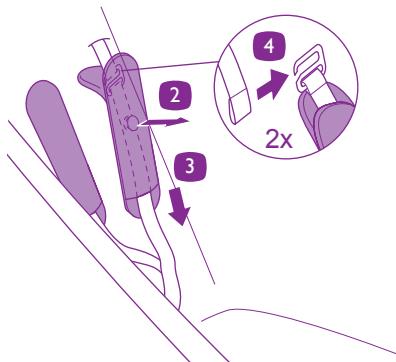
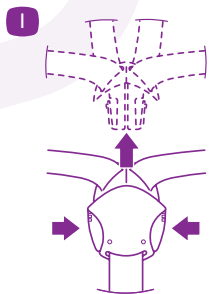
Raincover / Use

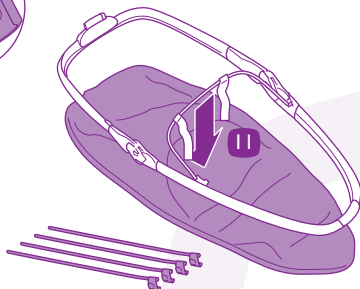
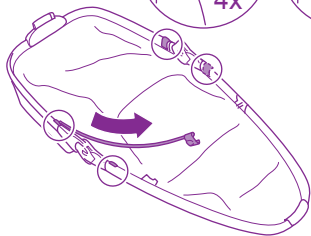
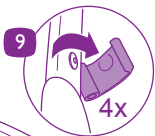
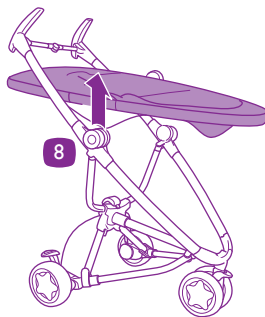
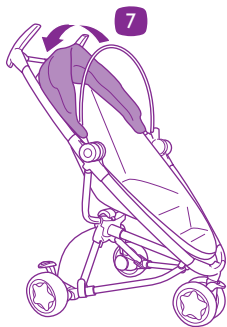


Shopping basket / Use

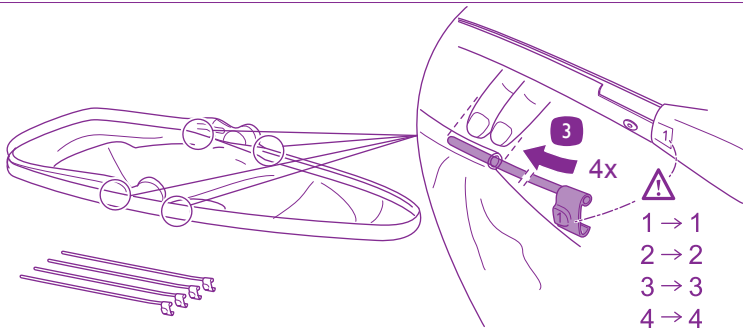
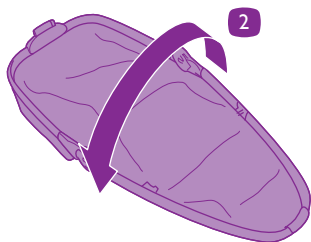
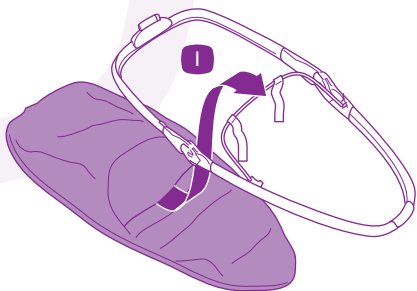


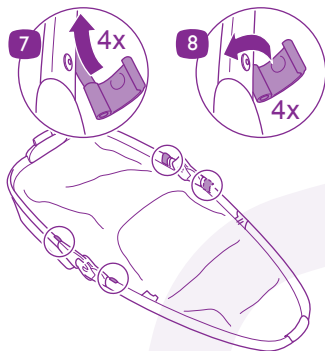
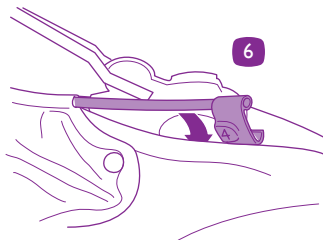
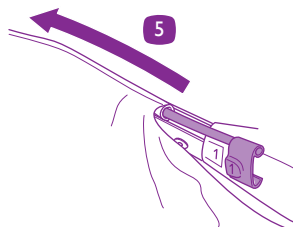
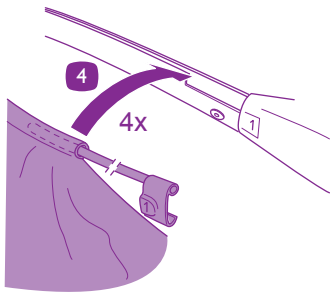
Fabric / Remove



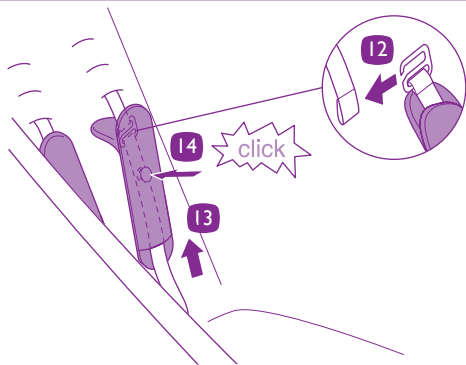
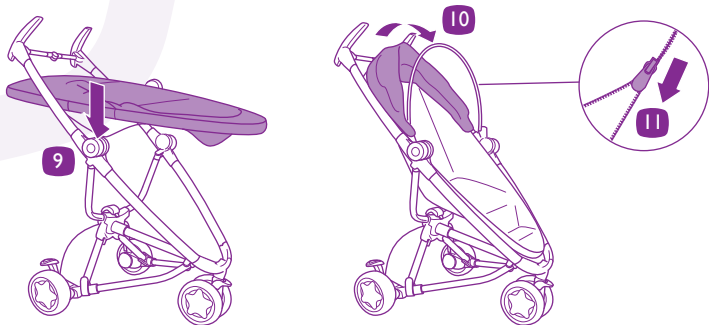


Fabric / Place

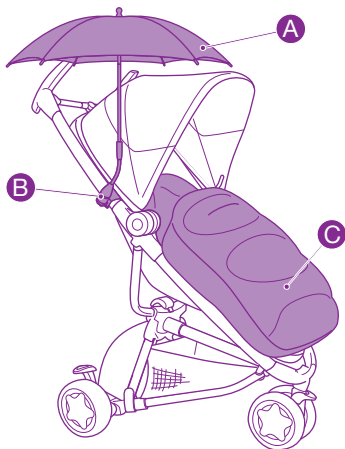




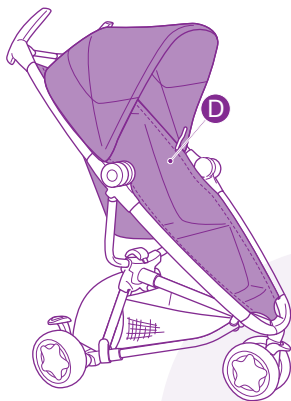
Fabric / Place



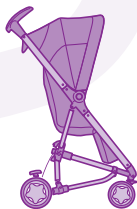
Accessories / Exclusive (Optional)



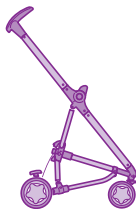
- A Parasol
- B. Parasol clip
- C. Footmuff
- D. Zapp seat accessory



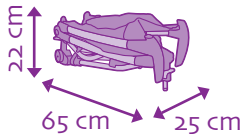
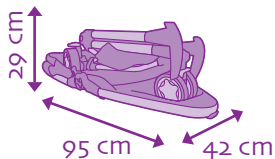
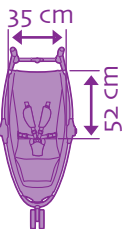
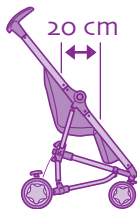
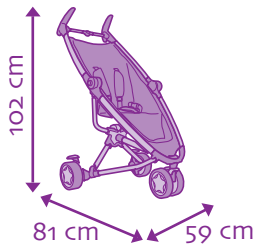
Dimensions / Weight

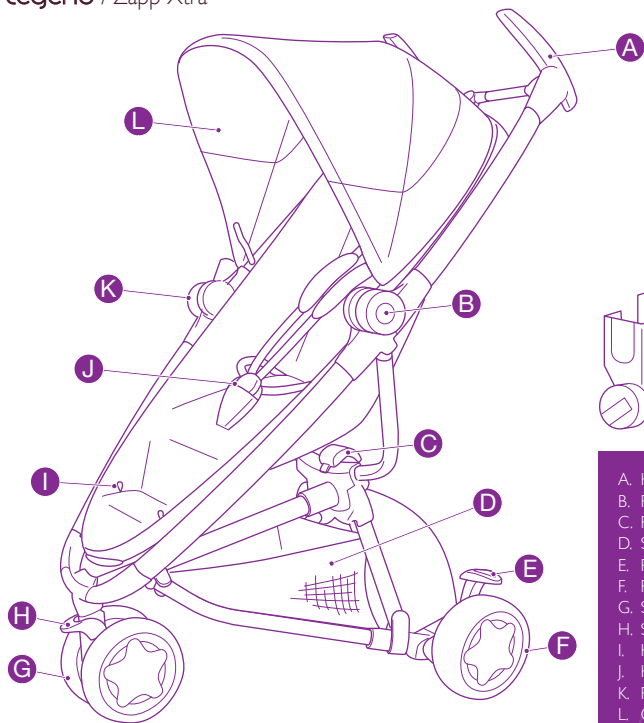


8,7 kg



6,3 kg





- A. Handle bar
- B. Release lock folding mechanism
- C. Release lock folding mechanism
- D. Shopping basket
- E. Parking brake
- F. Rear wheels
- G. Swivel wheels
- H. Swivel lock
- I. Handles footrest
- J. Harness
- K. Release lock folding mechanism
- L. Canopy
- M. Adapters

Safety and Maintenance

IMPORTANT KEEP FOR FUTURE REFERENCE!

WARNING: Read these instructions carefully before use and keep them for future reference. Your child's safety may be affected if you do not follow these instructions.

WARNING: A CHILD'S SAFETY IS YOUR RESPONSIBILITY.

WARNING: Not suitable for over night sleeping, your child may be at risk of serious harm or injury.

WARNING: Always activate the parking brake on the pushchair when standing still.

WARNING: Children should be harnessed in at all times and should never be left unattended.

WARNING: Always use the crotch strap in combination with the waist and shoulder belts.

WARNING: Check before each use, that the adapters, pram body or seat unit attachment devices are correctly engaged.

WARNING: Ensure that all locking devices are engaged before use.

WARNING: The child should be clear of all moving parts while making adjustments.

WARNING: Overloading, incorrect folding and the use of non-approved accessories may damage or break this vehicle.

WARNING: Any load attached to the handle affects the stability of the pram/ pushchair.

WARNING: This product is not suitable for running or skating.

WARNING: Prevent the danger of suffocation and keep plastic bags and small parts out of the reach of children.

WARNING: This vehicle requires regular maintenance by the user.

WARNING: The tyres may leave black marks on some surfaces (particularly smooth floors like parquet, laminate and linoleum).

SAFETY INSTRUCTIONS

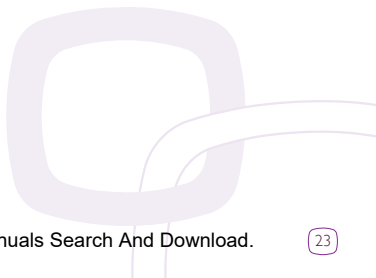
- Use the Quinny Zapp Xtra for only one child at a time.
- The Quinny Zapp Xtra is suitable for children from birth and up, weighing up to 15 kg (approx. 3.5 years).
- Keep your child and hands away from moving/ folding parts when folding, unfolding or adjusting the Quinny Zapp Xtra.
- Never lift the Quinny Zapp Xtra when your child is sitting or lying in it. Do not use escalators or stairs when your child is in the Quinny Zapp Xtra.
- Do not remove the logos from the fabric cover or frame, as this could cause damage to these components.
- It may be unsafe to use accessories or replacement parts other than those approved by the manufacturer or distributor. Do not make any modifications to the product.
- The Quinny Zapp Xtra has been approved in accordance with BS 7409:1996.

CLEANING AND MAINTENANCE

- Maintain and clean the Quinny Zapp Xtra regularly.
- Clean the frame and shopping basket regularly using a damp cloth. Do not use abrasive cleaners.
- When it is raining, always use the raincover to protect the fabric cover.
- After using in the rain, wipe the pushchair with a soft, absorbent cloth.
- Remove the detachable wheels once a month. Clean the axles and treat them with a dry Teflon spray. Never use Vaseline, grease or silicon lubricants.

WASTE SEPARATION

To help protect the environment, we kindly ask you to separate the packaging waste from the Quinny Zapp Xtra and at the end of its useful life to separate the components and dispose it properly.



Warranty and Contact

WARRANTY

We guarantee that this product was manufactured in accordance with the current European safety requirements and quality standards which are applicable to this product, and that this product is free from defects in workmanship and material at the time of purchase. During the production process the product was subjected to various quality checks. If this product, despite our efforts, shows a material/manufacturing fault within the warranty period of 24 months (with normal use as described in the user instructions) we will comply with the warranty terms and conditions. In this case please contact your dealer. For extensive information on applying the warranty terms and conditions, you can contact the dealer or visit our website: www.quinny.com.

The warranty is not valid in the following cases:

- In case of a use or purpose other than described in the manual.
- If the product is submitted for repair through a dealer that is not authorized by us.
- If the product is not supplied to the manufacturer with the original purchase receipt (via the retailer and/or importer).
- If repairs were carried out by third parties or a dealer that is not authorized by us.
- If the defect is the result of improper or careless use or maintenance, negligence or impact damage to the fabric cover and/or frame.
- If the parts show normal wear and tear that may be expected from daily use of a product (wheels, rotating and moving parts etc.)

Date of effect:

- The warranty becomes effective on the date the product is purchased.

Warranty term:

- The warranty period applies for a period of 24 consecutive months. The warranty only applies for the first owner and is not transferable.

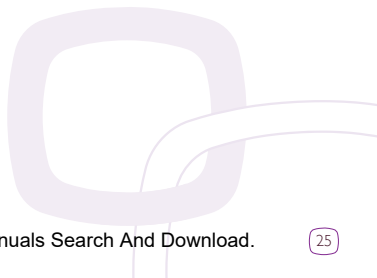
What to do in case of defects:

- After purchasing the product, keep the purchase receipt. The date of purchase must be clearly visible on the receipt. Should problems or defects arise please contact your retailer. Exchanging or taking back the product cannot be requested. Repairs do not give entitlement to extension of the warranty. Products that are returned directly to the manufacturer are not eligible for warranty.
- This Warranty Clause conforms to European Directive 99/44/EG of 25 May 1999.

QUESTIONS

Should you have any questions, please contact your supplier or importer (see www.quinny.com).

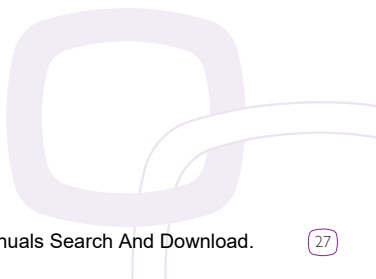
Notes



Notes



Notes





Free Manuals Download Website

<http://myh66.com>

<http://usermanuals.us>

<http://www.somanuals.com>

<http://www.4manuals.cc>

<http://www.manual-lib.com>

<http://www.404manual.com>

<http://www.luxmanual.com>

<http://aubethermostatmanual.com>

Golf course search by state

<http://golfingnear.com>

Email search by domain

<http://emailbydomain.com>

Auto manuals search

<http://auto.somanuals.com>

TV manuals search

<http://tv.somanuals.com>