



CONTENTS

The FCC Wants You to Know	1
Using Battery Power	1
Using AC or DC Power	2
Listening Safely	2
Traffic Safety	2
Using the Radio	3
Loading a Cassette Tape	3
Playing a Cassette Tape	4
Recording	4
Recording from the Radio	4
Making Live Recordings	4
Tape Tips	4
Restoring Tape Tension and Sound Quality	4
Erasing Tapes	4
Preventing Accidental Erasure	4
Cleaning the Tape-Handling Parts	5
Care	5
Specifications	6

SCR-65 Auto-Stop AM/FM Stereo Cassette Recorder

OWNER'S MANUAL — Please read before using this equipment.

Your RadioShack Auto-Stop AM/FM Stereo Cassette Recorder is a versatile, easy-to-use music system. You can record from the radio or make live recordings, or just enjoy the radio or cassette player's high quality sound. The cassette recorder's compact design and handy carrying handle let you take it almost anywhere.

WARNING: To reduce the risk of fire or shock hazard, do not expose this product to rain or moisture.		
	CAUTION RISK OF ELECTRIC SHOCK. DO NOT OPEN.	
CAUTION: TO REDUCE THE RISK OF ELECTRIC SHOCK, DO NOT REMOVE COVER OR BACK. NO USER-SERVICEABLE PARTS INSIDE. REFER SERVICING TO QUALIFIED PERSONNEL.		



This symbol is intended to alert you to the presence of uninsulated dangerous voltage within the product's enclosure that might be of sufficient magnitude to constitute a risk of electric shock. Do not open the product's case.



This symbol is intended to inform you that important operating and maintenance instructions are included in the literature accompanying this product.

THE FCC WANTS YOU TO KNOW

This equipment complies with the limits as specified in Part 15 of *FCC Rules*. These limits provide reasonable protection against radio and TV interference in a residential area.

However, your equipment might cause TV or radio interference even when it is operating properly. To eliminate interference, you can try one or more of the following corrective measures:

- reorient or relocate the receiving antenna

- increase the distance between the equipment and the radio or TV
- use outlets on different electrical circuits for the equipment and the radio or TV

Consult your local Radio Shack store if the problem still exists.

USING BATTERY POWER

Your cassette recorder can use four C batteries (not supplied) for power. For the best performance and longest life, we recommend RadioShack alkaline batteries.

Cautions:

- Use only fresh batteries of the required size and recommended type.
- Do not mix old and new batteries, different types of batteries (standard, alkaline, or rechargeable), or rechargeable batteries of different capacities.

1. Push the tab down on the battery compartment cover and lift it off.
2. Place the batteries in the compartment and on top of the attached ribbon, as indicated by the polarity symbols (+ and -) marked inside.

Note: One battery goes under the others.

3. To replace the cover, insert the cover's bottom tab first, then fold the cover up until the top tab snaps back in.

When the sound becomes weak or distorted, the cassette tape playing speed slows, or the

 **RadioShack**[®]
www.radioshack.com[™]

© 2000 RadioShack Corporation. All Rights Reserved.
RadioShack, RadioShack.com, and Adaptaplug are trademarks used by RadioShack Corporation.

cassette recorder stops operating properly, replace the batteries.

Warning: Dispose of old batteries promptly and properly. Do not burn or bury them.

Caution: If you do not plan to use the cassette recorder with batteries for a week or longer, remove the batteries. Batteries can leak chemicals that can destroy electronic parts.

USING AC OR DC POWER

You can power the cassette recorder with standard AC power using a 6V, 700 mA AC or DC adapter and a size M Adaptaplug™ connector (neither supplied) available at your local RadioShack store.

Cautions:



You must use a Class 2 power source that supplies 6V DC and delivers at least 700 mA. Its center tip must be set to negative and its plug must fit the cassette recorder's **DC 6V** jack. Using an adapter that does not meet these specifications could damage the cassette recorder or the adapter.

- Always connect the AC or DC adapter to the cassette recorder before you connect it to a power source. When you finish, disconnect the adapter from its power source before you disconnect it from the cassette recorder.
1. Set the adapter's voltage switch to 6V, if necessary, then connect the Adaptaplug to the adapter's cord so the tip reads TIP-.
 2. Insert the barrel plug into the recorder's **DC 6V** jack.
 3. Depending on which power source you are using, plug the other end of the adapter into a standard AC outlet or a vehicle's 12V power source, such as a cigarette-lighter socket.

Notes:

- Connecting an AC or DC adapter automatically disconnects internal batteries, if installed.
- If the cassette recorder does not operate properly when you use DC power, be sure the 12V source (such as a cigarette-lighter socket) is clean and that the adapter's plug is pushed all the way into the socket.
- Disconnect the adapter when you are not using the cassette recorder.
- Internal batteries (if installed) automatically disconnect when you plug the adapter into the **DC 6V** jack.

LISTENING SAFELY

To protect your hearing, follow these guidelines when you use headphones.

- Set the volume to the lowest setting before you begin listening. After you begin listening, adjust the volume to a comfortable level.
- Do not listen at extremely high volume levels. Extended high-volume listening can lead to permanent hearing loss.
- Once you set the volume, do not increase it. Over time, your ears adapt to the volume level, so a volume level that does not cause discomfort might still damage your hearing.

TRAFFIC SAFETY

Do not wear headphones while operating a motor vehicle or riding a bicycle. This can create a traffic hazard and could be illegal in some areas.

Even though some headphones let you hear some outside sounds when listening at normal volume levels, they still can present a traffic hazard.

VOLUME — slide to adjust the sound volume.

The radio/cassette player's automatic level control circuitry automatically adjusts the recording level. Adjusting **VOLUME** does not affect the recording.

Phones — connect a pair of headphones (not supplied) with a 1/8-inch (3.5-mm) plug. Your local RadioShack store carries a wide selection of headphones.

Insert the headphones' 1/8-inch (3.5-mm) plug into the cassette recorder's phones jack.

Note: Connecting headphones automatically disconnects the built-in speaker.

PAUSE — press to temporarily stop a tape. Press again to resume play, recording, rewinding, or fast-forwarding.

STOP/EJECT — press to stop tape play, recording, fast-forwarding, or rewinding, or to open the cassette compartment door.

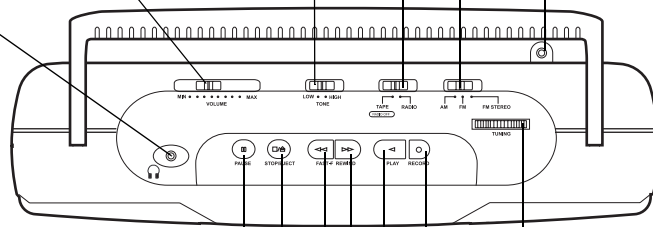
Note: The radio/cassette player's auto stop function saves battery life by turning off the motor and releasing the tape-handling parts when the tape reaches its end.

TONE LOW/HIGH — slide **TONE** to **LOW** to enhance the bass sound or to **HIGH** to enhance the treble sound.

TAPE RADIO OFF/RADIO — slide to turn the radio on and off and to use the cassette functions.

AM/FM/FM STEREO — slide to select the band. Select **FM STEREO** to hear sound in stereo. **FM STEREO** lights when receiving an FM station in stereo. If the reception is weak when using **FM STEREO**, select **FM** instead. The sound will be monaural, but the reception should improve.

Antenna — to get the best FM reception, fully extend the telescoping antenna. The AM antenna is built-in. Rotate the radio for the best AM reception.



PLAY

TUNING — rotate to select the desired AM or FM station.

RECORD — press to record from the radio or live, using the built-in MIC.

Note: Sometimes taped AM broadcasts produce a whistling sound that you can hear, called a "beat." Slide **BEAT CUT** (on the back of the radio/cassette player) to the position that produces the best quality recording.

FAST-F — press to fast-forward a tape to the desired location.

REWIND — press to rewind a tape to the desired location.

USING THE RADIO

1. Slide **TAPE RADIO OFF/RADIO** to **RADIO**.
2. Slide **AM/FM/FM STEREO** to the desired band.
3. Adjust **TUNING** to the desired station.
4. Adjust **VOLUME MIN/MAX** as desired.
5. Slide **TAPE RADIO OFF/RADIO** to **TAPE RADIO OFF** to turn off the radio.

finger. If you do not remove excess slack, the tape might become tangled in the record/playback mechanism. Avoid touching the tape.

2. Press **STOP/EJECT** to open the cassette compartment door.
3. Load the cassette with its open edge facing up, its full reel to the right, and the side you want to play facing out.
4. Gently close the compartment door.

LOADING A CASSETTE TAPE

1. Take up any slack in the tape by turning the cassette's hub with a pencil or your

PLAYING A CASSETTE TAPE

1. Slide **TAPE RADIO OFF/RADIO** to **TAPE RADIO OFF**.
2. Load a cassette tape.
3. Press **PLAY**.
4. Adjust **VOLUME MIN/MAX** as desired.
5. Press **STOP/EJECT** to stop play back before it automatically stops at the end of that side. Press **STOP/EJECT** again to open the cassette compartment and remove the cassette tape.

RECORDING

You can record from the radio, or use the built-in microphone to make a live recording.

Recording from the Radio

1. Load a blank cassette tape (or one you want to record over) into the cassette compartment.
2. Slide **AM/FM/FM STEREO** to the desired band.
3. Adjust **TUNING** to the station you want to record.
4. Press **RECORD** to begin recording. Both **PLAY** and **RECORD** lock down.
5. Press **STOP/EJECT** to stop recording.

Making Live Recordings

Follow these steps to make live recordings using the built-in microphone

1. Load a blank cassette tape (or one you want to record over) into the cassette compartment.
2. Slide **TAPE RADIO OFF/RADIO** to **TAPE RADIO OFF**.

3. Press **RECORD** to begin recording. Both **PLAY** and **RECORD** lock down.
4. Speak into the built-in microphone, or place it near the sound source.
5. Press **STOP/EJECT** to stop recording before it automatically stops.

TAPE TIPS

Restoring Tape Tension and Sound Quality

After you play a cassette tape several times, the tape might become tightly wound on the reels. This can cause playback sound quality to deteriorate.

To restore the sound quality, fast-forward the tape from the beginning to the end of one side, then completely rewind it. Then loosen the tape reels by gently tapping each edge of the cassette on a flat surface.

Caution: Be careful not to damage the cassette when tapping it. Do not touch the exposed tape or allow any sharp objects near the cassette.

Erasing Tapes

To record over a cassette tape, simply record as usual. The cassette deck records over the previous recording.

You can quickly erase both sides of a cassette tape using a RadioShack bulk tape eraser.

Note: If you use metal or high-bias type tape, the recorded sound might not be erased properly.

Preventing Accidental Erasure

Cassette tapes have two erase-protection tabs — one for each side. When a tab is in place, you can record on that side.

To prevent accidental erasure of a tape recording, use a screwdriver to remove one or both of the cassette tape's erase-protection tabs. This prevents **RECORD** from being pressed.

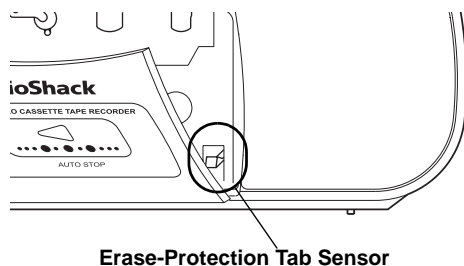
If you later decide to record on a tape side after you have removed the erase-protection tab, place a piece of strong plastic tape over that side's erase-protection hole. Be sure you cover only the hole originally covered by the erase-protection tab.

Caution: Removing the erase-protection tabs does not prevent a bulk eraser from erasing a cassette tape.

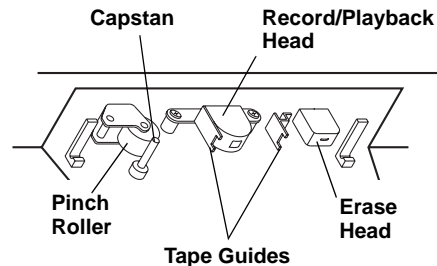
Cleaning the Tape-Handling Parts

Dirt, dust, or particles of the tape's coating can accumulate on the tape heads and other parts that the tape touches. This can greatly reduce the performance of the cassette player. After every 20 hours of tape player operation, follow these steps to clean the tape-handling parts or use a RadioShack cassette deck cleaning kit.

1. Set **TAPE RADIO OFF/RADIO** to **TAPE RADIO OFF**.
2. Remove the batteries and disconnect any other power source.
3. Open the cassette compartment door.
4. Hold down the erase-protection tab sensor inside the cassette compartment, then press **RECORD** to expose the record/playback and erase heads, then press **PLAY** to expose the tape-handling parts.



5. Use a cotton swab dipped in tape head cleaning solution or denatured alcohol to gently clean the capstan, pinch roller, tape guides, and tape heads.



6. Press **STOP/EJECT** and close the cassette compartment door, then reinstall the batteries or reconnect the power source.

CARE

Keep the cassette recorder dry; if it gets wet, wipe it dry immediately. Use and store the cassette recorder only in normal temperature environments. Handle the cassette recorder carefully; do not drop it. Keep the cassette recorder away from dust and dirt, and wipe it with a damp cloth occasionally to keep it looking new.

Modifying or tampering with the cassette recorder's internal components can cause a malfunction and might invalidate its warranty and void your FCC authorization to operate it. If your cassette recorder is not performing as it should, take it to your local RadioShack store for assistance.

SPECIFICATIONS

Radio

Frequency Range:

FM 88–108 MHz
AM 530–1710 kHz

Antenna

FM Telescoping Antenna
AM Ferrite Rod

Cassette Player

Track System 4 Track Stereo
Tape Speed $1\frac{7}{8}$ ips
Recording System AC Bias, Magnet Erase
Frequency Response (Record/Play) at ± 6 dB 125–6300 Hz
Wow and Flutter 0.35% (WRMS)

General

Power Requirements AC Adapter, 4 C Batteries, DC 6V
Dimensions (HWD) $4\frac{5}{8} \times 12\frac{5}{8} \times 3\frac{9}{16}$ in (118 \times 320 \times 91 mm)
Weight (without batteries) 2 lb 3.1 oz (1 kg)

Specifications are typical; individual units might vary. Specifications are subject to change and improvement without notice.

Limited Ninety-Day Warranty

This product is warranted by RadioShack against manufacturing defects in material and workmanship under normal use for ninety (90) days from the date of purchase from RadioShack company-owned stores and authorized RadioShack franchisees and dealers. EXCEPT AS PROVIDED HEREIN, RadioShack MAKES NO EXPRESS WARRANTIES AND ANY IMPLIED WARRANTIES, INCLUDING THOSE OF MERCHANTABILITY AND FITNESS FOR A PARTICULAR PURPOSE, ARE LIMITED IN DURATION TO THE DURATION OF THE WRITTEN LIMITED WARRANTIES CONTAINED HEREIN. EXCEPT AS PROVIDED HEREIN, RadioShack SHALL HAVE NO LIABILITY OR RESPONSIBILITY TO CUSTOMER OR ANY OTHER PERSON OR ENTITY WITH RESPECT TO ANY LIABILITY, LOSS OR DAMAGE CAUSED DIRECTLY OR INDIRECTLY BY USE OR PERFORMANCE OF THE PRODUCT OR ARISING OUT OF ANY BREACH OF THIS WARRANTY, INCLUDING, BUT NOT LIMITED TO, ANY DAMAGES RESULTING FROM INCONVENIENCE, LOSS OF TIME, DATA, PROPERTY, REVENUE, OR PROFIT OR ANY INDIRECT, SPECIAL, INCIDENTAL, OR CONSEQUENTIAL DAMAGES, EVEN IF RadioShack HAS BEEN ADVISED OF THE POSSIBILITY OF SUCH DAMAGES.

Some states do not allow limitations on how long an implied warranty lasts or the exclusion or limitation of incidental or consequential damages, so the above limitations or exclusions may not apply to you.

In the event of a product defect during the warranty period, take the product and the RadioShack sales receipt as proof of purchase date to any RadioShack store. RadioShack will, at its option, unless otherwise provided by law: (a) correct the defect by product repair without charge for parts and labor; (b) replace the product with one of the same or similar design; or (c) refund the purchase price. All replaced parts and products, and products on which a refund is made, become the property of RadioShack. New or reconditioned parts and products may be used in the performance of warranty service. Repaired or replaced parts and products are warranted for the remainder of the original warranty period. You will be charged for repair or replacement of the product made after the expiration of the warranty period.

This warranty does not cover: (a) damage or failure caused by or attributable to acts of God, abuse, accident, misuse, improper or abnormal usage, failure to follow instructions, improper installation or maintenance, alteration, lightning or other incidence of excess voltage or current; (b) any repairs other than those provided by a RadioShack Authorized Service Facility; (c) consumables such as fuses or batteries; (d) cosmetic damage; (e) transportation, shipping or insurance costs; or (f) costs of product removal, installation, set-up service adjustment or reinstallation.

This warranty gives you specific legal rights, and you may also have other rights which vary from state to state.

RadioShack Customer Relations, 200 Taylor Street, 6th Floor, Fort Worth, TX 76102

We Service What We Sell

12/99

RadioShack Corporation
Fort Worth, Texas 76102

14-732
09A00
Printed in Hong Kong

Free Manuals Download Website

<http://myh66.com>

<http://usermanuals.us>

<http://www.somanuals.com>

<http://www.4manuals.cc>

<http://www.manual-lib.com>

<http://www.404manual.com>

<http://www.luxmanual.com>

<http://aubethermostatmanual.com>

Golf course search by state

<http://golfingnear.com>

Email search by domain

<http://emailbydomain.com>

Auto manuals search

<http://auto.somanuals.com>

TV manuals search

<http://tv.somanuals.com>