

## Travel Alarm Clock



Thank you for purchasing your Travel Alarm Clock from **RadioShack**. Please read this user's guide before installing, setting up, and using your new alarm clock.

### Check package contents

- Travel alarm clock (with battery installed)
- User's guide
- Quick start

### Features

- Small, portable design
- Snooze function
- Indoor temperature display

**Note:** Remove the plastic tab in the battery compartment before using.

### 1 Set the Clock

1. Hold down **SET Date**. The digits of month, date and year flash.
2. Continue holding **SET Date** and press **HOUR/Month**, **MIN/Date**, or **12/24/Year** to change the month, date, and year.
3. Release **SET Date** to confirm.
4. Hold down **SET Time**. The hour and minute digits flash.
5. Continue holding **SET Time** and press **HOUR/Month**, **MIN/Date**, or **12/24/Year** to select the time and hour format.
6. Release **SET Time** to confirm.

### ALARM

**SNOOZE:** Activate the snooze function.

**ON:** Turn alarm on.

**OFF:** Turn alarm off.

### °C/°F

Select Celsius or Fahrenheit.

### SNOOZE

- Silence the alarm for 5 minutes when the alarm sounds.
- Turn on the backlight.

### HOUR/Month

Set the hour or month.

### MIN/Date

Set the minute or date.

### 12/24 Year

Set the hour format or year.

**Notes:**

- In 12 hour format, an "AM" or "PM" sign will appear to indicate morning or evening hours.
- Temperature appears after a few seconds when you power on the alarm clock.



**SET Date/Time/Alarm**  
Set the date, time or alarm.

### 2 Set the Alarm

1. Hold down **SET Alarm**. The hour and minute digits flash.
2. Continue holding down **SET Alarm** and press **HOUR/MONTH**, **MIN/DATE**, **12/24 Year** to select the time and hour format.
3. Release **SET Alarm** to confirm.

### 3 Switching Off the Alarm

There are three ways to switch off the alarm.

#### Repeat Alarm: SNOOZE

Slide **ALARM** switch to **SNOOZE**. and appear on the display. When the alarm sounds, press **SNOOZE** to stop for 5 minutes. Press it when the alarm goes off again to delay for 5 more minutes.

**Note:** If you don't press **SNOOZE**, the alarm will sound for 1 minute, then stop to enter the daily alarm reset mode.

#### 24 Hour Alarm Set

Slide **ALARM** switch to **ON**, press **SNOOZE** to turn the alarm off for 24 hours.

#### Canceling the Alarm Completely

Slide **ALARM** switch to **OFF** to switch the alarm off completely.

### Resetting the Clock

If the alarm clock malfunctions, use a paper clip to press **RESET** on the bottom of the clock to the default setting.

### Replacing the Battery

Replace the battery when the display dims or sound weakens.

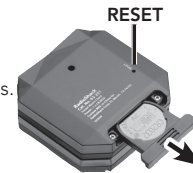
To replace, slide the battery compartment tray out. Insert the battery of the same type (3V, CR2032) plus "+" side up.

Slide the tray back into the compartment until it clicks.

The clock and alarm settings cannot be stored and will need to be set again.

### Battery Notes

- Keep button-cell batteries away from children. Swallowing a button-cell battery can be fatal.
- Dispose of batteries promptly and properly. Do not burn or bury them.
- Use only fresh batteries of the required size and type.
- If you do not plan to use the timer for more than a month, remove the battery. Batteries can leak chemicals that can damage electronic parts.



### Care and Use

- Keep your alarm clock dry; if it gets wet, wipe it dry immediately. Keep your alarm clock away from dust and dirt. Handle your alarm clock carefully; do not drop it.
- Avoid contact with any corrosive materials such as perfume, alcohol, or cleaning agents.
- Do not subject the alarm clock to excessive force, shock, dust, temperature or humidity. Any of these conditions may shorten the life of the alarm clock.
- Do not tamper with any of the internal components of this alarm clock. This will invalidate the warranty and may cause damage.

### Specifications

Power source.....One (1) CR2032 battery  
Clock accuracy.....+/- 20 sec/month  
Specifications are typical; individual units may vary. Specifications are subject to change and improvement without notice.

### Limited Warranty

**RadioShack** warrants this product against defects in materials and workmanship under normal use by the original purchaser for **ninety (90) days** after the date of purchase from a **RadioShack**-owned store or an authorized **RadioShack** franchisee or dealer. **RADIOSHACK** MAKES NO OTHER EXPRESS WARRANTIES.

This warranty does not cover: (a) damage or failure caused by or attributable to abuse, misuse, failure to follow instructions, improper installation or maintenance, alteration, accident, Acts of God (such as floods or lightning), or excess voltage or current; (b) improper or incorrectly performed repairs by persons who are not a **RadioShack** Authorized Service Facility; (c) consumables such as fuses or batteries; (d) ordinary wear and tear or cosmetic damage; (e) transportation, shipping or insurance costs; (f) costs of product removal, installation, set-up service, adjustment or reinstallation; and (g) claims by persons other than the original purchaser.

Should a problem occur that is covered by this warranty, take the product and the **RadioShack** sales receipt as proof of purchase date to any **RadioShack** store in the U.S. **RadioShack** will, at its option, unless otherwise provided by law: (a) repair the product without charge for parts and labor; (b) replace the product with the same or a comparable product; or (c)

refund the purchase price. All replaced parts and products, and products on which a refund is made, become the property of **RadioShack**. New or reconditioned parts and products may be used in the performance of warranty service. Repaired or replaced parts and products are warranted for the remainder of the original warranty period. You will be charged for repair or replacement of the product made after the expiration of the warranty period.

**RADIOSHACK** EXPRESSLY DISCLAIMS ALL WARRANTIES AND CONDITIONS NOT STATED IN THIS LIMITED WARRANTY. ANY IMPLIED WARRANTIES THAT MAY BE IMPOSED BY LAW, INCLUDING THE IMPLIED WARRANTY OF MERCHANTABILITY AND, IF APPLICABLE, THE IMPLIED WARRANTY OF FITNESS FOR A PARTICULAR PURPOSE, SHALL EXPIRE ON THE EXPIRATION OF THE STATED WARRANTY PERIOD.

EXCEPT AS DESCRIBED ABOVE, **RADIOSHACK** SHALL HAVE NO LIABILITY OR RESPONSIBILITY TO THE PURCHASER OF THE PRODUCT OR ANY OTHER PERSON OR ENTITY WITH RESPECT TO ANY LIABILITY, LOSS OR DAMAGE CAUSED DIRECTLY OR INDIRECTLY BY USE OR PERFORMANCE OF THE PRODUCT OR ARISING OUT OF ANY BREACH OF THIS WARRANTY, INCLUDING, BUT NOT LIMITED TO, ANY DAMAGES RESULTING FROM INCONVENIENCE AND ANY LOSS OF TIME, DATA, PROPERTY, REVENUE, OR PROFIT AND ANY INDIRECT, SPECIAL, INCIDENTAL, OR CONSEQUENTIAL DAMAGES, EVEN IF **RADIOSHACK** HAS BEEN ADVISED OF THE POSSIBILITY OF SUCH DAMAGES.

Some States do not allow limitations on how long an implied warranty lasts or the exclusion or limitation of incidental or consequential damages, so the above limitations or exclusions may not apply to you. This warranty gives you specific legal rights, and you may also have other rights which vary from State to State. You may contact **RadioShack** at:

**RadioShack** Customer Relations  
300 RadioShack Circle, Fort Worth, TX 76102 04/08

[www.RadioShack.com](http://www.RadioShack.com)

Protect the environment. Go to [E-CyclingCentral.com](http://E-CyclingCentral.com) to find an electronic recycling center near you.

©2009. **RadioShack** Corporation.  
All rights reserved. **RadioShack** and **RadioShack.com** are trademarks used by **RadioShack** Corporation.

04A09  
63-251

Printed in China

## Free Manuals Download Website

<http://myh66.com>

<http://usermanuals.us>

<http://www.somanuals.com>

<http://www.4manuals.cc>

<http://www.manual-lib.com>

<http://www.404manual.com>

<http://www.luxmanual.com>

<http://aubethermostatmanual.com>

Golf course search by state

<http://golfingnear.com>

Email search by domain

<http://emailbydomain.com>

Auto manuals search

<http://auto.somanuals.com>

TV manuals search

<http://tv.somanuals.com>