

1.3-Megapixel Webcam with Mic



Package contents

- Webcam
- Software CD
- User's Guide
- Quick Start

Features

- Captures video at a resolution of 1.3 megapixels and takes still pictures up to 5.2 megapixels interpolated
- Built-in mic
- Plug and play; no driver required
- Works with most instant messaging (IM) software

Compatibility

System Requirements

- **Operating System:** Windows Vista™
Windows® XP Service Pack II or above
Support Microsoft Video Class
Windows Compatible Sound Card and Speakers
- **Processor:** Pentium® P3 700MHz (Pentium® P4 or higher recommended)
- **Memory:** 256 MB RAM
- **Free Hard Disk Space:** 200 MB
- **Connection:** USB 2.0
- Internet Connection

① Plug into USB Port

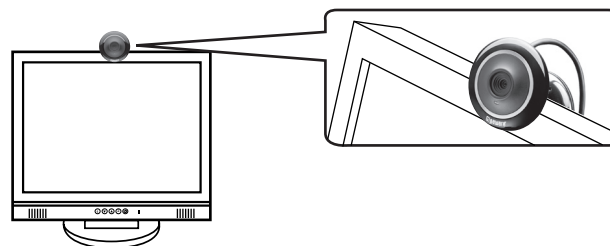


② Select a location

Stand on a flat surface

-OR-

Clamp on your monitor



③ Install Software

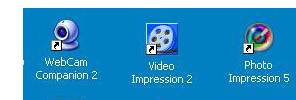
1. Turn on your computer and insert the CD.
For Windows Vista: click **Run Menu.exe** from the autorun options.
2. When the **1.3MP Webcam with Mic** screen appears, click the desired software.



3. Follow the on-screen instructions.
Note: For Windows Vista users, if a User Account Control message appears during installation, select "Allow."
4. When complete, the **Video Impression 2**, **WebCam Companion 2** and **Photo Impression 5** icons appear on your computer desktop.
5. Restart your computer after software installation.

④ Launch Software

Click (or double click) one of the icons to launch the software.



WebCam Companion 2

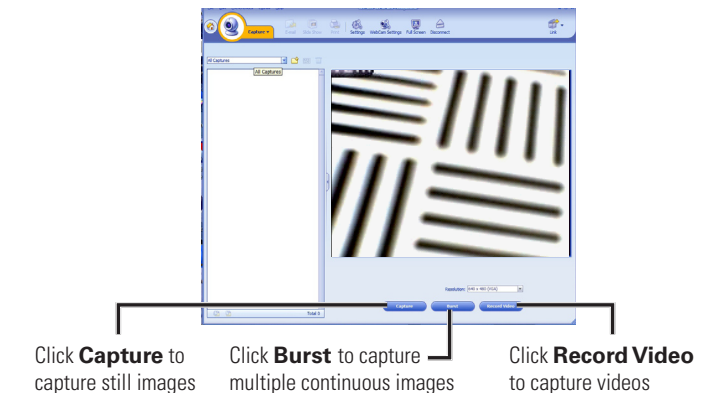
Use **WebCam Companion 2** to capture still images and videos, monitor for movement, edit still images, and chat online.

Capturing Still Images and Videos

1. Click **Capture** on the **WebCam Companion 2** menu.



2. Do one of the following:



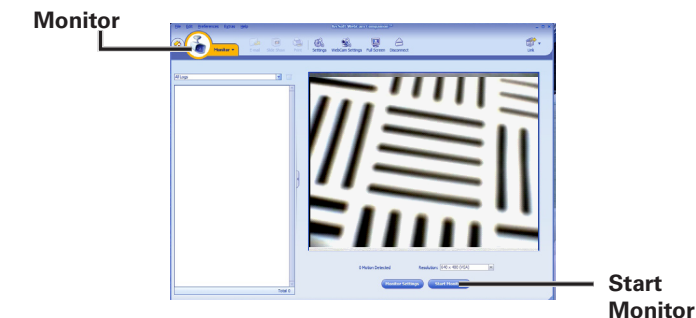
Note: When using **WebCam Companion 2** to capture video, do not set your image resolution higher than 640 x 480 unless your computer meets the following minimum system requirements:

- CPU speed 2.4GHz or equivalent
- 100 MB free hard drive space
- 512 MB RAM
- 32 MB video memory or above
- Latest updated video drivers

Monitoring for Movement

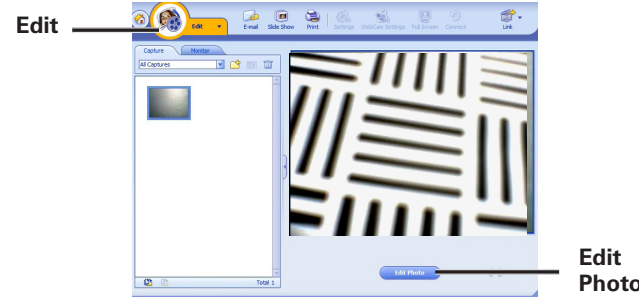
Webcam Companion 2 can automatically capture footage when your webcam detects movement, and notify you via e-mail or FTP.

1. Click the **Monitor** icon on the **WebCam Companion 2** main menu or from the pull-down menu on the top left corner.
2. Click **Start Monitor** to begin monitoring. Recording starts when movement is detected in front of the camera.

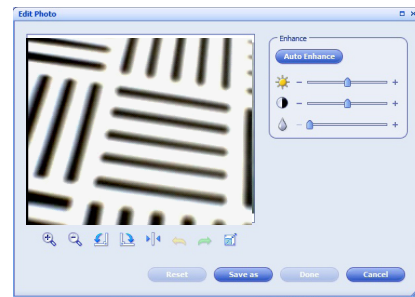


Editing Still Images

1. Click **Edit** from the pull-down menu on the top left corner.
2. Select the image to edit then double click to open it.



3. Click **Edit Photo**. Use the available edit tools to edit your photos.



Chatting Online

1. Select **Chat** from the **WebCam Companion 2** menu.
2. Select the chat application to install or launch video chat.

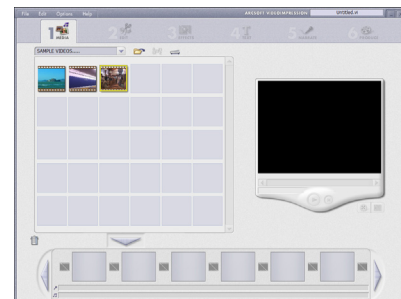
Videolmpression 2

Use **Videolmpression 2** to edit and produce videos.

1. Click on the **Videolmpression 2** icon on your desktop.
2. Click **Create a New Video**.
3. Click **Get From Album**.



4. Click **MEDIA**, then select the video you want to edit.
5. Select **EDIT, EFFECTS, TEXT, NARRATE, or PRODUCE** on the top tool bar.



PhotoImpression 5

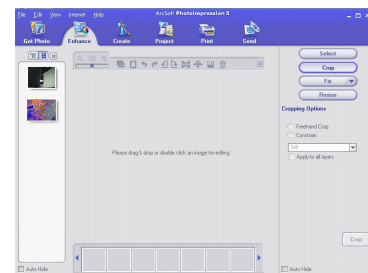
Use PhotoImpression 5 to edit and share photos.

1. Launch **PhotoImpression 5**.
2. Click the desired source for the photo files: **Folder, Camera/Scan, Video, Removable Media, or Album**.



If you want capture still photos from a **Video** source, click **Live -> Capture** to capture the photo.

3. Double click the photo to edit.
4. Select **Enhance, Create, Project, Print, or Send** tabs on the menu bar to edit your photos.



Notes:

- To learn more how to use *WebCam Companion 2, Videolmpression 2, and PhotoImpression 5*, refer to the application's online help.
- If your camera does not work properly, try restarting your computer.
- If your computer runs Windows XP Service Pack (SP) I, go to www.microsoft.com and update to Windows XP SP II or III before installing software.

Specifications

Image Sensor 1280 x 1024 Pixels, CMOS
Lens Specification F2.8, f=4.31mm / Fixed Focus Lens
White Balance Auto
Exposure..... Auto
Frame Rate 1280 x 1024 Pixels @ 8~10fps
..... 640 x 480 Pixels @ 30fps
..... 320 x 240 Pixels @ 30fps
Focus Range..... Fixed Focus
Depth of Field..... 30 to 100 cm
PC Interface USB 2.0
Video Format AVI
Audio Built-in Mic
Video Capture Resolution 1.3 Megapixels (1280 x 1024)
Still Capture Resolution 1.3 Megapixels,
..... up to 5.2 Megapixels Interpolated (2560 x 2048)
Power USB Port
Specifications are subject to change and improvement without notice.
Actual product may vary from the images found in this document.

FCC Information

This equipment has been tested and found to comply with the limits for a Class B digital device, pursuant to Part 15 of the FCC Rules. These limits are designed to provide reasonable protection against harmful interference in a residential installation. This equipment generates, uses and can radiate radio frequency energy and, if not installed and used in accordance with the instructions, may cause harmful interference to radio communications. However, there is no guarantee that interference will not occur in a particular installation. If this equipment does cause harmful interference to radio or television reception, which can be determined by turning the equipment off and on, the user is encouraged to try to correct the interference by one or more of the following measures:

- Reorient or relocate the receiving antenna.
- Increase the separation between the equipment and receiver.
- Connect the equipment into an outlet on a circuit different from that to which the receiver is connected.
- Consult the dealer or an experienced radio/TV technician for help.

Changes or modifications not expressly approved by Ignition L.P. may cause interference and void the user's authority to operate the equipment.

This device complies with part 15 of the FCC Rules. Operation is subject to the following two conditions: (1) This device may not cause harmful interference, and (2) this device must accept any interference received, including interference that may cause undesired operation.



Product	1.3 Megapixel Webcam with Mic
Model	25-494 / 25-1176 / 25-1177 / 25-1178
Responsible Party	Ignition L.P., 3102 Maple Ave Suite 450 Dallas, TX 75201
Phone	866-315-0426

Limited Warranty

Ignition L.P. warrants this product against defects in materials and workmanship under normal use by the original purchaser for **ninety (90) days** after the date of purchase. IGNITION L.P. MAKES NO OTHER EXPRESS WARRANTIES.

This warranty does not cover: (a) damage or failure caused by or attributable to abuse, misuse, failure to follow instructions, improper installation or maintenance, alteration, accident, Acts of God (such as floods or lightning), or excess voltage or current; (b) improper or incorrectly performed repairs by persons who are not a Ignition L.P. Authorized Service Facility; (c) consumables such as fuses or batteries; (d) ordinary wear and tear or cosmetic damage; (e) transportation, shipping or insurance costs; (f) costs of product removal, installation, set-up service, adjustment or reinstallation; and (g) claims by persons other than the original purchaser.

Should a problem occur that is covered by this warranty, take the product and the sales receipt as proof of purchase date to the place of purchase. Ignition L.P. will, at its option, unless otherwise provided by law: (a) repair the product without charge for parts and labor; (b) replace the product with the same or a comparable product; or (c) refund the purchase price. All replaced parts and products, and products on which a refund is made, become the property of Ignition L.P. New or reconditioned parts and products may be used in the performance of warranty service. Repaired or replaced parts and products are warranted for the remainder of the original warranty period. You will be charged for repair or replacement of the product made after the expiration of the warranty period.

IGNITION L.P. EXPRESSLY DISCLAIMS ALL WARRANTIES AND CONDITIONS NOT STATED IN THIS LIMITED WARRANTY. ANY IMPLIED WARRANTIES THAT MAY BE IMPOSED BY LAW, INCLUDING THE IMPLIED WARRANTY OF MERCHANTABILITY AND, IF APPLICABLE, THE

IMPLIED WARRANTY OF FITNESS FOR A PARTICULAR PURPOSE, SHALL EXPIRE ON THE EXPIRATION OF THE STATED WARRANTY PERIOD.

EXCEPT AS DESCRIBED ABOVE, IGNITION L.P. SHALL HAVE NO LIABILITY OR RESPONSIBILITY TO THE PURCHASER OF THE PRODUCT OR ANY OTHER PERSON OR ENTITY WITH RESPECT TO ANY LIABILITY, LOSS OR DAMAGE CAUSED DIRECTLY OR INDIRECTLY BY USE OR PERFORMANCE OF THE PRODUCT OR ARISING OUT OF ANY BREACH OF THIS WARRANTY, INCLUDING, BUT NOT LIMITED TO, ANY DAMAGES RESULTING FROM INCONVENIENCE AND ANY LOSS OF TIME, DATA, PROPERTY, REVENUE, OR PROFIT AND ANY INDIRECT, SPECIAL, INCIDENTAL, OR CONSEQUENTIAL DAMAGES, EVEN IF IGNITION L.P. HAS BEEN ADVISED OF THE POSSIBILITY OF SUCH DAMAGES.

Some States do not allow limitations on how long an implied warranty lasts or the exclusion or limitation of incidental or consequential damages, so the above limitations or exclusions may not apply to you. This warranty gives you specific legal rights, and you may also have other rights which vary from State to State. You may contact Ignition L.P. at:

Ignition L.P., 3102 Maple Ave Suite 450, Dallas, TX 75201

For product support, call
1-866-315-0426.



Protect the environment by recycling used electronics. Go to E-CyclingCentral.com to find an electronic recycling center near you.

Windows is a registered trademark and Windows Vista is a trademark of Microsoft Corporation in the United States and/or other countries.

© 2009. Ignition L.P. All rights reserved.
Gigaware is a registered trademark used by Ignition L.P.

Printed
in China
07A09

25-494
25-1176
25-1177
25-1178

Free Manuals Download Website

<http://myh66.com>

<http://usermanuals.us>

<http://www.somanuals.com>

<http://www.4manuals.cc>

<http://www.manual-lib.com>

<http://www.404manual.com>

<http://www.luxmanual.com>

<http://aubethermostatmanual.com>

Golf course search by state

<http://golfingnear.com>

Email search by domain

<http://emailbydomain.com>

Auto manuals search

<http://auto.somanuals.com>

TV manuals search

<http://tv.somanuals.com>