

LED CHART	
LED/COLOR	STATUS
Blue LED Blinking	Paired Mode
Blue LED Solid (Headphones) Blue LED Slowly Blinking (Transmitter)	Connected with Bluetooth® Headphones or Bluetooth Receiving Device
Red and Blue LED Solid (Violet Hue)	Charging and Connected with Bluetooth® Device
Red LED Solid	Battery is Currently Charging or Low Battery
Red LED Off	Charging Complete

TROUBLE CHART	
PROBLEM	TIP/SOLUTION
Difficulty pairing Headphones and Transmitter	Make sure both devices have been recently charged. These products will have trouble pairing on low battery voltage. 2) make sure you power on the UBHP first, then the transmitter.
Difficulty pairing Headphones and Bluetooth cell phones.	Make sure receiver is powered ON first. 2) Make sure your cell phone's Bluetooth® power is enabled and it is looking for devices, If needed, consult your cell phone's manual for information on pairing or discovering Bluetooth® devices for your particular phone.
Headphones drop wireless link less than 30 feet away.	The connection range varies on the surrounding environment. Range is not guaranteed to be 30 feet in all cases. Range can be reduced by other competing electronic devices such as: Cordless Telephones, Microwaves and Typical household electronics. Range can also be reduced.
Headphones or Transmitter loses wireless for no reason.	Check for other competing Bluetooth® or 2.4Ghz electronic devices in close proximity to the transmitter or UBHP head phones. Power down these competing devices.
No Audio heard from transmitter.	Check to make sure the two products successfully paired and both devices are powered ON. 2) Make sure you are within range of the transmitter. 3) Make sure source volume is not muted. 4) make sure headphone "I/O" switch is set for INPUT.

**LIMITED WARRANTY**

Scosche Industries Inc. warrants this product to be free from defects in material and workmanship for a period of 90 days from purchase. This Scosche product is sold with the understanding that the purchaser has independently determined the suitability of this product. This warranty is offered to the original purchaser of the product only. This warranty does not cover the product if physically damaged, subject to negligence or misuse, abuse, alteration, accident, or an act of GOD. This warranty does not apply to product which has water or physically damaged by accident or which has been miss used, disassembled or altered.

The original dated sales slip or proof of purchase will establish warranty eligibility. If the product should prove defective within the warranty period, return the product with proof of purchase to Scosche Industries Inc. Scosche, at its option, will replace or repair the product free of charge and return the product postage paid.

In no event shall Scosche Industries, Inc. be responsible for claims beyond the replacement value of the defective product, or in any way be liable or responsible for consequential or incidental damages. No express warranties and no implied warranties, whether for fitness or any particular use or otherwise, except as set forth above (which is made expressly in lieu of all other warranties) shall apply to products sold by Scosche. Scosche Industries cannot be held responsible for discrepancies/inconsistencies that may occur due to automotive manufacturing changes or option.

This device complies with FCC Rules Part 15. Operation is subject to the following two conditions: 1) This device may not cause interference, and 2) this device must accept any interference that may be received, including interference that may cause undesired operation. The manufacturer is not responsible for any radio or TV interference caused by unauthorized modification to this equipment. Such modification could void the user's authority to operate the equipment



**UNIVERSAL WIRELESS BLUETOOTH® HEADPHONES WITH IPOD TRANSMITTER KIT**

Congratulations on your purchase of the Scosche IBHPK Bluetooth® Wireless Headphones & Transmitter Kit. This system incorporates the latest Bluetooth® technology for your Bluelife® wireless lifestyle. Before using, please read manual carefully.

**FEATURES/SPECS:**

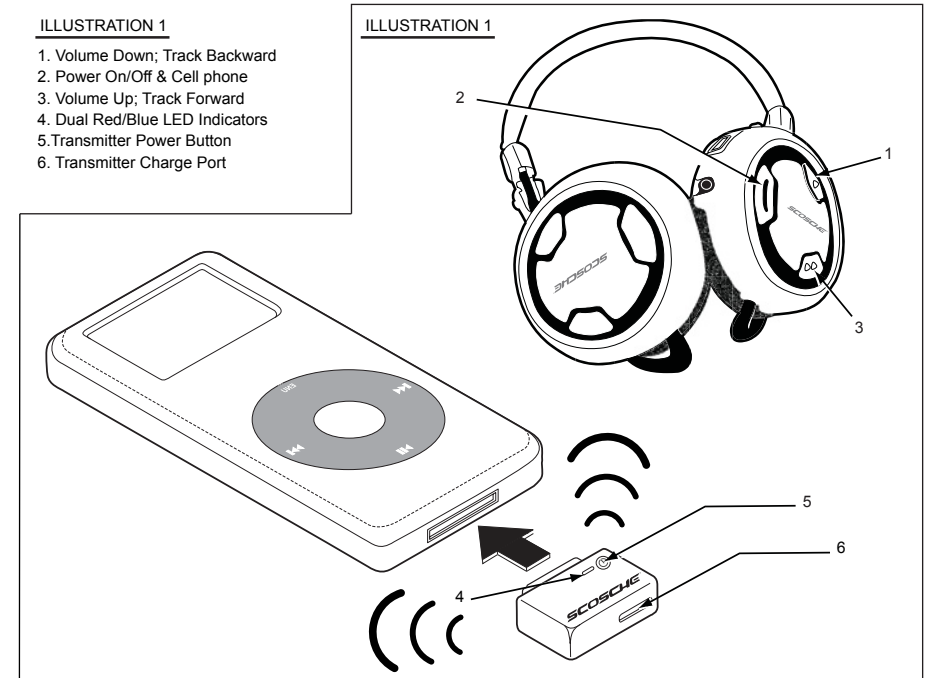
**BLUETOOTH® HEADPHONES:**

- Cutting-edge ergonomic folding design
- 2.5mm male to 3.5mm male adapter cable included
- Female 3.5mm to Male RCA cable included
- Built in Lithium-ion 6-7 hour Rechargeable Battery
- Supports Profiles: A2DP/AVRCP,HFK
- 2.5mm Switching Input/Output port allows UBHP to act as a wired headphone system or a Bluetooth® stand-alone receiver.
- USB Charging "Y" Cable

**IPOD BLUETOOTH® TRANSMITTER**

Lithium-ion Rechargeable Battery: Up to 10 hours of use. (450mAh capacity)  
 Designed with 30-pin iPod bottom dock (All iPods with bottom dock connector)  
 Wireless Range: Up to 30 Feet (10 Meters)  
 Bluetooth V1.2  
 Transmitter Power < 3dbm  
 Receiver Sensitivity: -78+4dm  
 Supported Profiles: Advanced Audio Distribution Profile (A2DP) / Audio Video Remote Control Profile (AVRCP)  
 Hands-Free Profile (HFP)  
 Frequency Range: 2.4Ghz - 2.4835Ghz  
 Dimensions: 55x40x10mm  
 Weight: 16 grams  
 Certifications: FCC

**OVERVIEW**



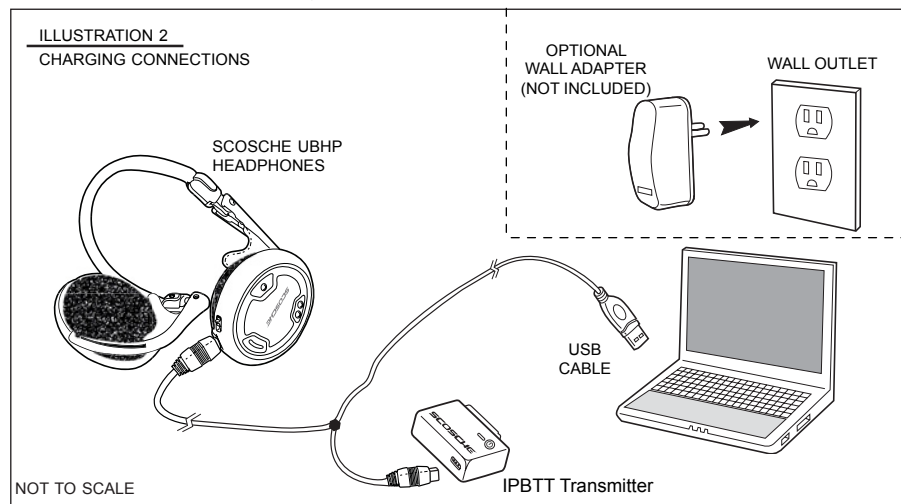
## CHARGING

**NOTE:** Will also charge your iPod until transmitter charge is full.

Before using this for the first time, charge the headphones and transmitter for a full 2.5 hours.

A cable is provided in the kit for charging.

1. Plug the Mini cable end of the charger cord into the charging jack as shown in Illustration 2.
2. Connect USB Cable to an available PC/Laptop USB port or 110v AC USB wall adapter/ power supply. (AC adapter not included).
3. Charge Battery for 2.5 hours (LED will illuminate RED when charging).
4. The RED LED will turn off when charging is complete. Unplug each device and enjoy up to 5 hours of use.
5. Purchase wall and car adapters to charge at home and/or on the road. (IPPWR / IP2IN1 - Sold Separately)



## PAIRING

### GENERAL PAIRING NOTES:

1. Keep the Bluetooth® products within a distance of 3 ft. ( 1 meter) when pairing.
2. These products are designed for AUTO-pairing function and no user input should be required. If for any reason you are asked for a passcode by any Bluetooth® device, always use "0000".
3. As a general rule, power the receiving device FIRST before the transmitting device. (Headphone is the receiver)
4. Compatible devices must be Bluetooth® v1.2 supporting A2DP profile.
5. Turn off any other nearby Bluetooth® devices, such as a cell phone or headset as this may hinder pairing process between your devices.
6. Pairing can take up to 1 minute, sometimes more. Once initial pairing is complete between your headphones, transmitter and Bluetooth® phone, reconnecting during normal use occurs in a fraction of the time.

### PAIRING UBHP HEADPHONES TO THE IPBTT TRANSMITTER:

1. Press the Power Button on the UBHP headphones for 3 seconds. Blue LED will flash indicating pairing mode.
2. Press the power Button on the IPBTT transmitter for 3 seconds. Blue LED will flash quickly indicating pairing mode.
3. Pairing should occur within 1 minute but can take up to 5 minutes. Blue LED will stop flashing on the headphones and flash slowly on the transmitter.
4. Plug the transmitter into your iPod bottom dock. You should hear the audio through your Bluetooth® Headphones.
5. If you are successful pairing the devices, repeat steps 1-4 above. Make sure receiving device is powered first as suggested in pairing notes and power off any other Bluetooth® mobile devices. If you still cannot successfully pair the devices, go to the TROUBLESHOOTING steps in this manual or call Tech Support at (800) 621-3695 Ext.3

## PAIRING CONTINUED

### PAIRING UBHP HEADPHONES TO A BLUETOOTH® CELL PHONE:

1. Place headphones and Bluetooth cell phone within 3 ft. (1m) of each other.
2. Ensure headphone power is off.
3. Press the power button on the right earpiece for 3 seconds. The Blue LED will flash indicating pairing mode.
4. While the headphone LED is flashing Blue, follow the instructions for your cell phone to seek (or discover) any Bluetooth® devices. You will be pairing the Scosche Bluetooth® headphones to your phone just like you would pair any Bluetooth® handset or hands-free kit. If needed, consult your cell phone's manual for information on pairing or discovering Bluetooth® devices for your particular phone.
5. Your cell phone should display a list of local Bluetooth® devices. The Scosche headphones should be displayed as a device named "SCOSCHE" Headphones.
6. Select this device and your cell phone should connect to this device automatically. If your phone happens to ask for a password (or passcode) then enter "0000".
7. Bluetooth® pairing should now be complete. (Blue LED on solid) If your phone fails to locate the Scosche headphones, then check to make sure your phone is seeking Bluetooth® devices. Check to make sure the Scosche headphone power is switched ON and the LED light is flashing Blue indicating "pairing" mode. Repeat steps 1-6 if you cannot successfully pair the two devices, or go to the TROUBLESHOOTING steps in this manual or call Tech Support at (800) 621-3695 Ext.3.
8. Place the headphones over your ears and make a test call from your cell phone. Your cell phone audio should be heard through the headphones.

## HEADPHONE & TRANSMITTER OPERATION

### POWER ON/OFF NOTE:

Under normal use, we suggest powering on the headphones (receiver) first, then power on your Bluetooth® transmitter. This method will produce the shortest connection time between the devices. If using a Bluetooth® cell phone, then connect to the headphone AFTER the transmitter is connected as the third device in your group. If you have previously paired with your Bluetooth® cell phone, then select the Scosche headphones from the Bluetooth® device list and choose to connect.

**POWER ON OFF:** Press the Power Button for 3 seconds to turn the transmitter ON or OFF

### CONNECTION

Connect IPBTT to the bottom dock of your iPod. Turn the IPBTT on, then turn on your Bluetooth® headphones or receiving device. Once the two devices are paired, enjoy the audio.

### REMOTE CONTROL SOURCE FUNCTIONS

ONLY when used with device that support the AVCRP profile for remote control functions. ( Scosche Bluetooth® headphones - UBHP)

#### **- PLAY/PAUSE**

Press the power button on your Bluetooth® headphones (or other receiving devices) to PLAY or PAUSE the current track. Do not hold down the power button for more than 1 second or it may turn off the power.

(NOTE: Volume control will no longer be controlled through iPod wheel, only through Bluetooth® device controls).

#### **- TRACK UP/DOWN**

1. Press and hold the volume up button to skip forward to the next track.
2. Press and hold the volume down button to skip back to the beginning of the song.
3. To track to previous song press and hold immediately after step (2).

## CELLULAR OPERATION

### INCOMING CALL ANSWER:

With your UBHP headphones powered and a Bluetooth® wireless link established, a ring tone will be heard inside the headphones when you receive an incoming phone call. Simply press and release the Power Button to ANSWER an incoming call. If you were listening to music at the time, it will be interrupted during your call. You will hear the other party through the left headphone speaker and they will hear you through the built-in microphone on the right earpiece. The audio will return when the call ends.

### ENDING A CALL:

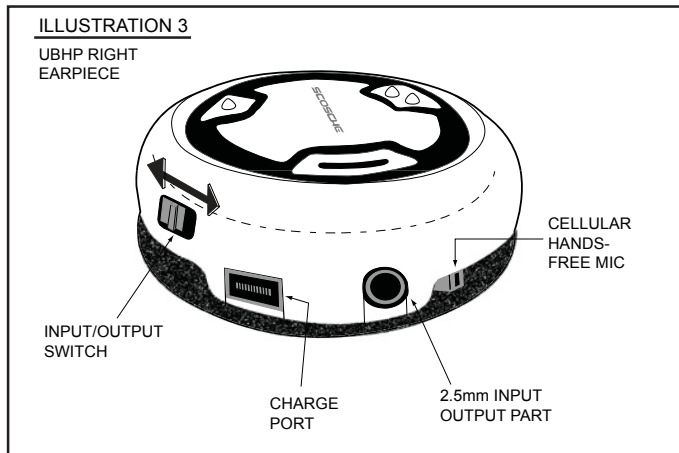
When you are finished with the call, simply press and release the Power Button to END the call.

### CELLULAR RE-CONNECTING:

Once you have initially paired your cell phone with the UBHP Bluetooth® headphones, operating steps may vary when needing to re-establish a Bluetooth® link between the headphones and cell phone. Some phones may attempt to reconnect automatically as soon as they "see" the UBHP and some phones may require you to select the "Scosche" headphones from a list of cataloged Bluetooth® devices in your particular phone's memory. If needed, consult your cell phone's manual for information on connecting to Bluetooth® devices for your particular phone.

## 2.5mm INPUT/OUTPUT WITH SWITCH

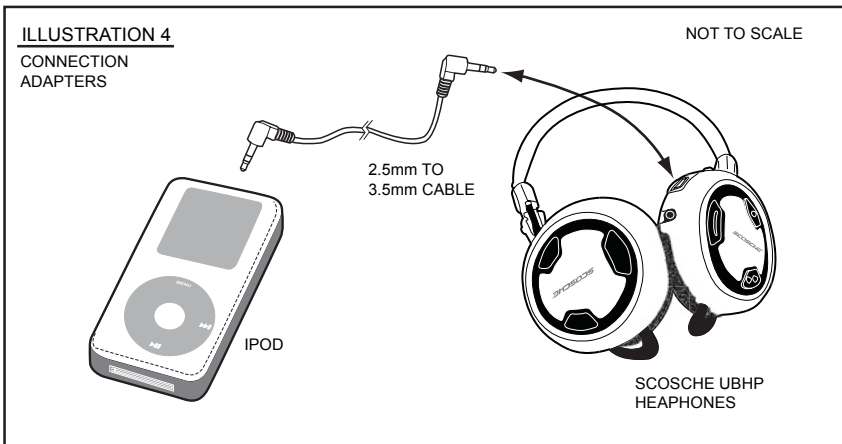
The UBHP Bluetooth® headphones include a unique 2.5mm stereo input/output port with switch:



### POSITION 1 (INPUT) ILLUSTRATION 4

In this position the 2.5mm port act as a direct audio wires input and the UBHP Headphones will operate as pair of high quality wired units. This is handy for air travel or anywhere wireless devices are not permitted.

- Make sure UBHP power is OFF
- Connect to the 2.5mm to 3.5mm adapter cable between your portable media player and the UBHP headphones

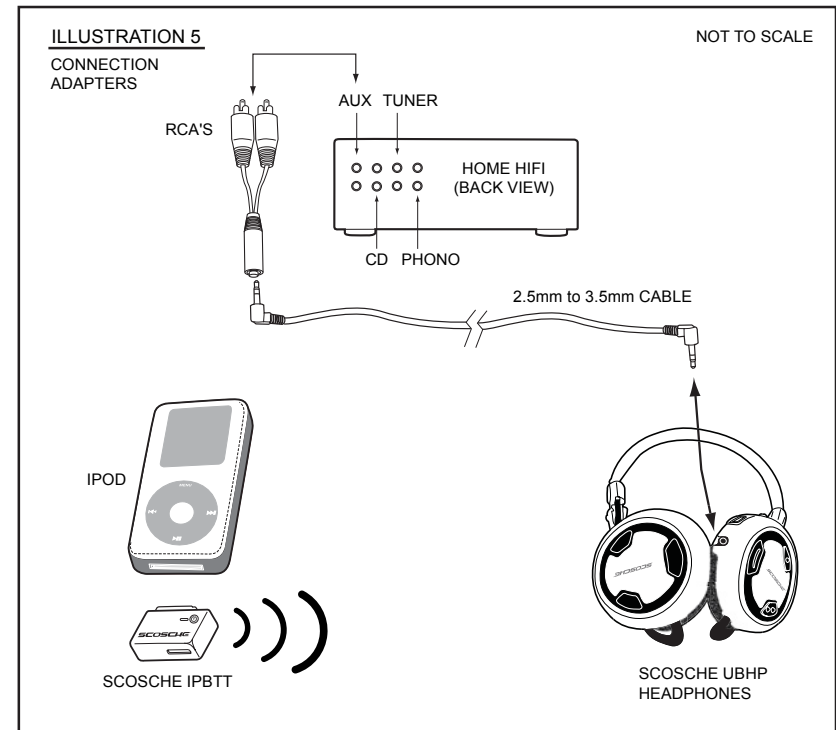


### POSITION 2 (OUTPUT): ILLUSTRATION 5

In this position the 2.5mm port acts as a bypass or audio output. The UBHP Headphones will operate as Bluetooth® RECEIVER and pass the audio signal through the 2.5mm port. This is handy if you need to send the audio signal from the IPBTT Bluetooth® Transmitter to an outboard or external device such as a set of amplified mini-speakers, home stereo or laptop computer.

- Make sure Both the headphones and transmitter are powered and a Bluetooth® wireless connection has been established.
- Connect to the 2.5mm to 3.5mm adapter cable between the UBHP Headphones and your external secondary audio device.

## 2.5mm INPUT/OUTPUT WITH SWITCH (CONT'D)



### TRANSMITTER TRANSMITS TO HEADPHONES

This product may not be compatible with all Bluetooth® features on all Bluetooth® enabled cell phones. This may or may not include send/end control functions, volume adjustment and voice dialing. Please consult your Bluetooth® enabled cell phone operation manual for specific features and instructions.

### CONNECT ADAPTERS

The UBHK set adapters for may applications:  
2.5mm Male to 3.5mm male Cable

This adapter allows the UBHP headphones to be connected to various device using a standard 3.5mm stereo output which is found on most MP3 players.

3.5mm Male to .25 Hifi Headphone Male

This adapter allows the IPBTT transmitter (or UBHP Headphones) to connect with home HiFi stereo receivers or device that use .25 headphone jack.

## CARE AND MAINTENANCE

- Keep devices away from heavy moisture. Sources of humidity and all types of liquids will corrode electronic circuits.
- Keep devices away from high heat. Extreme temperatures will shorten the life of electronic circuits and could possibly melt the plastic case. For example, do not store the unit in direct sunlight on a vehicle dashboard.
- Don't attempt to open or repair these products. Non-expert handling will damage them and void any all possible warranty claims.
- Don't use harsh chemicals, cleaning solvents or detergents to clean the products.

## Free Manuals Download Website

<http://myh66.com>

<http://usermanuals.us>

<http://www.somanuals.com>

<http://www.4manuals.cc>

<http://www.manual-lib.com>

<http://www.404manual.com>

<http://www.luxmanual.com>

<http://aubethermostatmanual.com>

Golf course search by state

<http://golfingnear.com>

Email search by domain

<http://emailbydomain.com>

Auto manuals search

<http://auto.somanuals.com>

TV manuals search

<http://tv.somanuals.com>