



ANT1100F

Ultra-Thin Indoor HDTV Antenna

User's Guide / Guide de l'utilisateur / Guía del Usuario

FCC Statement

This device complies with part 15 of the FCC Rules. Operation is subject to the following two conditions: (1) This device may not cause harmful interference, and (2) this device must accept any interference received, including interference that may cause undesired operation.

This equipment has been tested and found to comply with the limits for a Class B Digital Device, pursuant to Part 15 of the FCC Rules. These limits are designed to provide reasonable protection against harmful interference in a residential installation. This equipment generates, uses, and can radiate radio frequency energy and, if not installed and used in accordance with the instructions, may cause harmful interference to radio communications. However, there is no guarantee that interference will not occur in a particular installation. If this equipment does cause harmful interference to radio or television reception, which can be determined by turning the equipment off and on, the user is encouraged to try to correct interference by one or more of the following measures:

- Reorient or relocate the receiving antenna.
- Increase the separation between the equipment and receiver.
- Connect the equipment into an outlet on another circuit.
- Consult the dealer or an experienced radio/TV technician for help.

Caution: Any changes or modifications not expressly approved by the party responsible for compliance could void the user's authority to operate this equipment.

Industry Canada Regulatory Information

CAN ICES-3 (B)/NMB-3 (B)

Avis d'Industrie Canada

CAN ICES-3 (B)/NMB-3 (B)

Congratulations on your purchase of the ANT1100F Ultra-Thin Indoor HDTV Antenna. This antenna's paper-thin design lets you hang it virtually anywhere on walls or windows. Its 9-foot cable gives you room to roam to find the best spot for optimum reception, with an multi-directional reception pattern that gets signals from every direction.

RCA Multi-Directional Antennas

An RCA multi-directional antenna is able to receive signals from any direction. Useful for both analog and digital reception, the ANT1100F has a paper-thin design that hangs virtually anywhere. The patented multi-directional technology ensures that the antenna does not need to be adjusted according to the location of the transmitting signal.

ANT1100F Features

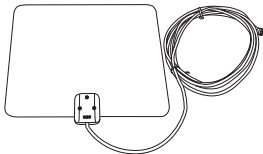
The ANT1100F Ultra-Thin Indoor HDTV Antenna is packed with features that make it a great addition to your home theater. Because the ANT1100F is multi-directional, there is no need to constantly turn the antenna to improve reception. And, with its ultra-thin design, the ANT1100F hangs virtually anywhere, disappearing into any decor. The ANT1100F:

- Hangs virtually anywhere
- Eliminates constant adjustments with multi-directional reception pattern
- Installs easily, with a 9-foot cable

ANT1100F Hardware

Before attempting to use your antenna, please remove all parts from the box and read the instructions carefully. The ANT1100F antenna package includes the following items:

1 ANT1100F Ultra-Thin Indoor HDTV Antenna
with Built-In 9-Foot Coaxial Cable



Removable two-sided mounting tape



Setting Up the ANT1100F

Find the best location for the antenna

Before you connect the antenna, determine the best spot in your home for optimum reception. Visit www.tvsetfree.com to see where your local broadcasts are coming from. Then, try as much as possible to avoid obstructions between these transmitters and your antenna.

It is highly recommended that the flat surface of the antenna should face the broadcast tower or as close as practical.

Because of its multi-directional capabilities, the ANT1100F receives UHF, VHF, and local high-definition broadcasts, providing quality reception from most locations.

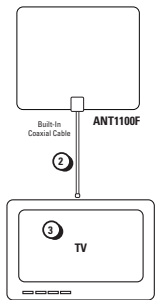
Note: Placing the antenna on a metal surface may interfere with reception. If the antenna isn't performing as well as expected, try placing it on another surface. Then, re-scan for channels on your TV or converter box.

Test the Location

Broadcast signal strength can vary significantly inside your home even within the same room. In most homes, the best signal strength will usually be in a window or as high on the wall as possible.

Before you mount the antenna to the wall using the provided mounting tape, it's a good idea to test the location you want to use. Temporarily mount the antenna using 2-3 pieces of scotch tape. Then continue with the connection instructions below. Once you've scanned for channels on your TV, you'll be able to tell if this is a good location to use or not. If it is, you can continue with the mounting instructions that follow. If it isn't, you can try for better channel scan results with the antenna in a different location in the room.

Connecting the ANT1100F to Your TV



1. Make sure your TV is turned off.
2. Connect the ANT1100F's built-in cable to the antenna input on your TV.

Important: Make sure you uncoil the antenna's coaxial cable completely. Leaving it coiled will reduce reception performance.

3. Scan for channels on your TV.

Mounting the Antenna to the Wall

Once you've confirmed the best location for your antenna and scanned for channels, you're ready to mount the antenna to that location, using the mounting strips included. If you decide to move the antenna after you've mounted it, no problem: the mounting strips detach from the wall easily, without harming your wall's surface, and are easily replaceable at most retail and drug stores.

Caution: DO NOT use the mounting strips with wallpaper. The mounting strips may not adhere well to vinyl surfaces. Apply to surfaces above 50°F (10°C). Adhesive could lose adhesion above 105°F (40°C).

Note: The antenna also has two holes along its top edge for hanging it using screws or tacks (not included).

To mount the antenna using the mounting strips:

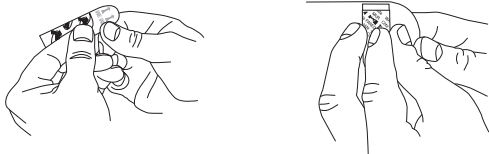
1. Clean the surface of the location with isopropyl rubbing alcohol. Wipe gently, then let the area dry.

Important: Do not use household cleaners.

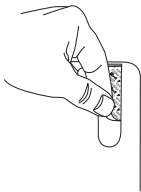
2. While the area is drying, separate the mounting strips. Snap them apart length-wise first, then snap each of the resulting strips in half.



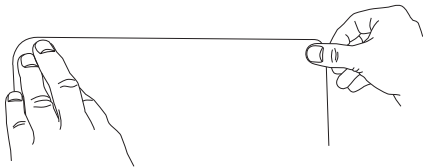
3. Remove the red liner. Press the adhesive strip onto one of the top corners of the back of the antenna. Repeat for the other top corner. Then place a single mounting strip on the metal section in the bottom middle of the antenna, with the strip facing down.



4. Remove the black liner for each strip.

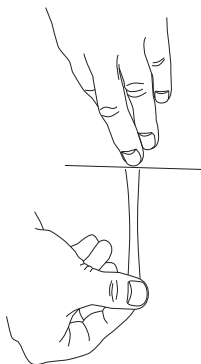


5. Line up the antenna where you want to put it, then press it against the wall for 10 seconds.



6. Stop pressing the antenna against the wall and confirm that it's firmly attached to the wall. Then press an additional 30 seconds.

Important: *The mounting strips have tabs that extend beyond the borders of the adhesive. Leave these in place--they will allow you to remove the antenna without damaging your wall.*



To remove the antenna (and mounting strips) from the wall:

1. Hold the antenna against the wall gently to keep it in place. DO NOT press the antenna against wall.
2. Find the tab for the single mounting strip at the bottom of the antenna (on the metal part). Stretch the tab straight down (away from the antenna) at least 12 inches until the strip releases.

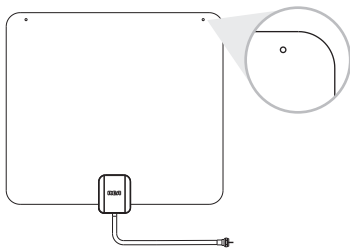
Important: NEVER pull the strip tab towards you.

3. Pull the antenna off the wall slightly so that you can reach the tabs for the two mounting strips at the top of the antenna. Repeat step 2 for each of these tabs as well.

Note: If you can't reach the tabs, you can remove the antenna from the mounting strips using a piece of dental floss. Gently run the floss behind the antenna, between the strips and the antenna, until the strips separate. Then perform step 2 above for each of the strips by themselves.

4. Remove the mounting strips from the antenna.

If you want to mount the antenna to the wall again, you can find replacement strips at most retail or drug stores.



To mount the antenna using thumbtacks (not included):

Insert two thumbtacks (not included) into the two holes on the top of the antenna. Hold the thumbtacks in place and lower the holes onto the thumbtacks. Make sure to line up the holes with the thumbtacks.

Coaxial Cable Installation Precautions

- Do not bend coaxial cables into less than a three-inch radius. Tighter bends can cause shorts and can change a cable's impedance.
- Do not install a coaxial cable where it will have a pulling tension greater than 15 pounds during installation. After installation, make sure there is no tension on the cable.
- Use only round-headed staples. Any clamps or securing devices used with coax should grip the cable evenly about the circumference without crushing the cable. Flat staples can damage the coaxial cable.
- Do not expose a coaxial cable to a temperature greater than 176 degrees Fahrenheit. Keep the cable away from heating vents and water heaters.
- Make sure you uncoil the antenna's coaxial cable completely. Leaving it coiled will reduce reception performance.

12 Month Limited Warranty

VOXX Accessories Corporation (the "Company") warrants to the original retail purchaser of this product that should this product or any part thereof, under normal use and conditions, be proven defective in material or workmanship within 12 months from the date of original purchase, such defect(s) will be repaired or replaced (at the Company's option) without charge for parts and repair labor. To obtain repair or replacement within the terms of this Warranty, the product along with any accessories included in the original packaging is to be delivered with proof of warranty coverage (e.g. dated bill of sale), specification of defect(s), transportation prepaid, to the Company at the address shown below. Do not return this product to the Retailer.

This Warranty is not transferable and does not cover product purchased, serviced or used outside the United States or Canada. The Warranty does not extend to the elimination of externally generated static or noise. This Warranty does not apply to costs incurred for installation, removal or reinstallation of the product, or, if in the Company's opinion, the product has been damaged through acts of nature, alteration, improper installation, mishandling, misuse, neglect, or accident. This Warranty does not cover damage caused by an AC adapter not provided with the product.

THE EXTENT OF THE COMPANY'S LIABILITY UNDER THIS WARRANTY IS LIMITED TO THE REPAIR OR REPLACEMENT PROVIDED ABOVE AND, IN NO EVENT, SHALL THE COMPANY'S LIABILITY EXCEED THE PURCHASE PRICE PAID BY PURCHASER FOR THE PRODUCT.

This Warranty is in lieu of all other express warranties or liabilities. ANY IMPLIED WARRANTIES, INCLUDING ANY IMPLIED WARRANTY OF MERCHANTABILITY OR FITNESS FOR A PARTICULAR PURPOSE, SHALL BE LIMITED TO DURATION OF THIS WARRANTY. ANY ACTION FOR BREACH OF ANY WARRANTY HEREUNDER, INCLUDING ANY IMPLIED WARRANTY, MUST BE BROUGHT WITHIN A PERIOD OF 24 MONTHS FROM THE DATE OF ORIGINAL PURCHASE. IN NO CASE SHALL THE COMPANY BE LIABLE FOR ANY CONSEQUENTIAL OR INCIDENTAL DAMAGES WHATSOEVER. No person or representative is authorized to assume for the Company any liability other than expressed herein in connection with the sale of this product.

Some states/provinces do not allow limitations on how long an implied warranty lasts or the exclusion or limitation of incidental or consequential damage so the above limitations or exclusions may not apply to you. This Warranty gives you specific legal rights and you may also have other rights which vary from state/province to state/province.

U.S.A.: Audiovox Return Center, 150 Marcus Blvd., Hauppauge, New York 11788

CANADA: Audiovox Return Center, c/o Genco, 6685 Kennedy Road, Unit 3, Door 14, Mississauga, Ontario L5T 3A5

Free Manuals Download Website

<http://myh66.com>

<http://usermanuals.us>

<http://www.somanuals.com>

<http://www.4manuals.cc>

<http://www.manual-lib.com>

<http://www.404manual.com>

<http://www.luxmanual.com>

<http://aubethermostatmanual.com>

Golf course search by state

<http://golfingnear.com>

Email search by domain

<http://emailbydomain.com>

Auto manuals search

<http://auto.somanuals.com>

TV manuals search

<http://tv.somanuals.com>