

# Owner's Manual

## VG-2 Guard X•K•Ka Superwide Radar/Laser Detector w/Safety Light

---

Please read before using this equipment.

Cat. No. 22-1698



# FEATURES

---

Your RadioShack VG-2 Guard X•K•Ka Superwide Radar/Laser Detector can alert you to all known police traffic radar and laser systems. It receives X-, K-, and Ka-band radar signals and also detects both the instant-on and laser systems many police departments use to measure vehicle speed. Plus, your detector can give you advance warning of potential road hazards by detecting signals from transmitters that broadcast Safety Warning System™ alerts.

You can use the Highway Safety Light to provide illumination at night or when making repairs to your vehicle, or to let passing motorists know you need assistance. The light can serve as a spotlight, fluorescent lamp, single and twin safety flasher.

Your detector has many useful features, including:

**VG-2 Protection** — makes your detector invisible to the VG-2 radar-detector detector when it senses VG-2 operation.

**X-, K-, Ka-Band, and Laser Signal Detection** — warns you when it detects signals from traffic radar or laser devices. Different tones sound to let you know the type of signal received.

**Safety Warning System Detection** — alerts you to the presence of potential road hazards and emergency vehicles signalled by a Safety Warning System transmission.

© 1998 Tandy Corporation.  
All Rights Reserved.

RadioShack is a registered trademark used by Tandy Corporation.

FAST is a trademark used by Tandy Corporation.

Safety Warning System and SWS are trademarks of  
Safety Warning System LLC.

---

---

**360x Detection** — detects laser signals from both the front and the rear of your vehicle.

**City/Highway Modes** — let you minimize alerts when you are in areas that have false radar sources.

**FAST (False Alert Suppression Technology)** — helps prevent false alarms caused by non-traffic radar sources.

**Auto Quiet** — lets you set the radar detector to give you a full-volume alert for about 5 seconds, then reduce its alert to minimum volume.

**Your radar/laser detector includes the following items:**

- Coiled Power Cord
- Windshield Bracket with Suction Cups
- Hook and Loop Fastener

We recommend you record your detector's serial number here. The number is on the detector's bottom panel.

Serial Number: \_\_\_\_\_

**Important:** Some areas have laws regulating the use of radar detectors. Check with your local law enforcement agency about the laws in your area.

One or more of the following patents apply: 4,315,261; 5,146,227; 5,379,456. Other patents pending.

# CONTENTS

---

<b>A Quick Look</b> .....	<b>5</b>
<b>Installation</b> .....	<b>7</b>
Mounting Guidelines .....	7
Hook-and-Loop Tape Mounting .....	8
Windshield Mounting .....	9
Connecting Power .....	10
<b>Detector Operation</b> .....	<b>11</b>
Turning the Detector On and Off .....	11
Adjusting the Volume .....	12
Demonstrating Alerts .....	12
Muting Alerts .....	12
Using Auto Quiet .....	13
Selecting the City and Highway Modes .....	13
Setting the VG-2 Option .....	14
Receiving and Identifying Alert Signals .....	15
Resetting the Detector .....	16
<b>Safety Light</b> .....	<b>17</b>
Using Vehicle Battery Power .....	18
Installing/Replacing Batteries .....	18
Charging Rechargeable Batteries .....	20
Operation .....	22
Replacing the Bulbs .....	23
<b>Troubleshooting</b> .....	<b>25</b>
Replacing the Fuse .....	27

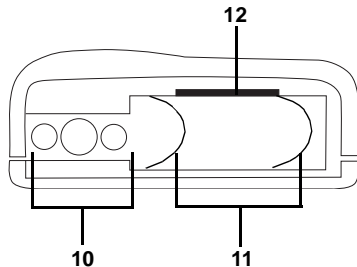
# A QUICK LOOK

---

---

1. **Rear Laser Detection Lens** — receives incoming laser signals from the rear.
2. **PWR (Power/Volume) Button** — turns the detector on and off and lets you adjust the volume.
3. **MUTE Button** — press before a radar/laser signal is detected to reduce the level of audio alerts that sound when there is a signal. Press after a signal is detected to silence the alert, but still have visual alerts to keep you informed.
4. **CITY Button** — reduces false alerts typically encountered in urban driving areas. Also works with the **MUTE** button to turn the VG-2 option on or off.

- 
- Band Identifying LEDs** — identify the type of radar detected.
  - Digital Display** ▽ προωιδες διστινχτ πισυαλ χονφιρματιον οφ σιγναλ στρενγη ανδ ινδιχατεσ τηε σελεχτεδ οπερατινγ μοδεσ.
  - Speaker** — sounds distinct audio alerts.
  - Power Jack** — the power cable plugs in here.
  - Bracket Release Button** — lets you quickly remove the detector's bracket.



- Front Laser Detection Lens** — receives incoming laser signals from the front.
- Radar Detection Antenna** — receives incoming radar signals.
- Mounting Bracket Slot** — holds the windshield mounting bracket.

# INSTALLATION

---

---

## MOUNTING GUIDELINES

Follow these guidelines when selecting a location.

- Choose a location that does not block the driver's view of the road.
- Mount the detector in a level position with a clear view to both the front and rear.
- The detector's view of the road must not be blocked by any metal object.
- Some vehicles have InstaClear or ElectriClear defogging windshields, which have metal coatings that block signals. General Motor's APV vans have a solar shield that keeps the vehicle cooler during the summer, but also blocks signals. A detector installed in a vehicle with any of these features will probably not detect a signal.
- Since window tinting reduces the received strength of laser signals, you should not mount the detector behind any tinted glass.
- Do not mount the detector where the driver or a passenger might hit it in a sudden stop or accident.

**Caution:** Whichever mounting method you choose, place the detector out of view when you leave the vehicle. This keeps the detector out of sight of thieves and prevents exposing it to extremely high temperatures, which can temporarily impair performance.

---

---

## HOOK-AND-LOOP TAPE MOUNTING

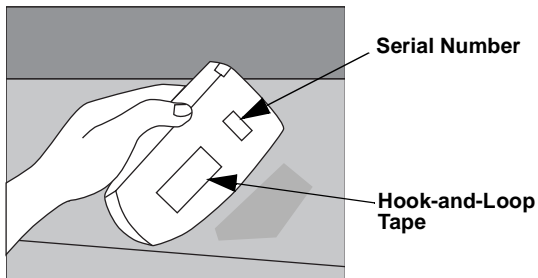
For some dashboards, the hook-and-loop tape included with your detector might be best for mounting. Follow these steps to use the hook-and-loop tape.

1. Use a damp cloth to clean the bottom of the detector and the dashboard. Let both surfaces dry.

**Note:** The tape's adhesive might not stick to a surface treated with vinyl cleaner or protectant.

2. Remove the backing from one side of the tape and stick the tape to the bottom of the detector.

**Note:** Do not place the hook-and-loop tape over the detector's serial number.



On a curved dashboard, cut the supplied strip in half and use one strip on each side of the bottom of the detector.

3. Remove the backing from the other side of the tape and press the detector onto the dashboard.



---

---

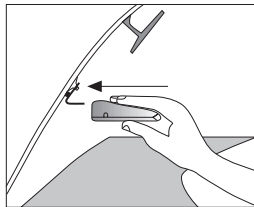
## WINDSHIELD MOUNTING

The supplied suction-cup windshield bracket lets you easily mount the detector on the windshield.

**Caution:** Do not use the bracket in a vehicle that has a plastic coating on the windshield designed to protect passengers during an accident. If you use the bracket on this type of windshield, you might permanently mar the windshield's surface.

1. Align the groove in each suction cup with the slots in the windshield bracket and slide the suction cups out until they lock into place.
2. Clean the selected windshield area, position the bracket on the windshield, and press firmly on each suction cup to secure it in place.
3. Slide the detector onto the base plate until it snaps into place.

*illus of suction cup installation in windshield bracket*



To level the detector, press the bracket release button to remove the detector from the bracket. Then bend the bracket.

*illus of bracket release button location*

---

---

## CONNECTING POWER

### Caution:

- Use only the supplied power cord. If your power cord is lost or damaged, you can order a replacement cord from your local RadioShack store.
- Before plugging the power cord's cigarette-lighter plug into your vehicle's cigarette-lighter socket, make sure the plug's tip is screwed firmly onto the plug. See "Replacing the Fuse" on Page 27 for more information about the cigarette-lighter plug.
- Unplug the power cord's cigarette-lighter plug from your vehicle's cigarette-lighter socket when you turn off the ignition. This prevents your vehicle's battery from being drained if you leave the detector on when you turn off the ignition.

Plug the supplied power cord's barrel plug into the detector's power jack. Then plug the cord's cigarette-lighter plug into your vehicle's cigarette-lighter socket.

**Note:** If the detector does not operate when you turn it on, remove the cigarette-lighter plug from your vehicle's socket and check the socket for ashes and other debris. Also check the fuse in the cigarette-lighter plug and your vehicle's fuse block (see "Replacing the Fuse" on Page 27).

# DETECTOR OPERATION

---

---

## TURNING THE DETECTOR ON AND OFF

To turn on the detector, press **PWR**.

The detector sounds a distinctive alert and displays the indicators for each alert type as a self test, in this order. (The VG-2 indicators only sound/appear if the feature is selected. See "Setting the VG-2 Option" on Page 14.)

Alert Type	Audible Alert	Visual Alert
X	Low steady	8 and yellow LED
K	High trill	8 and red LED
Ka	Medium warble	8 and yellow/red LEDs
Safety	None	S . and red LED
Laser	None	L
VG-2	None	-

All features selected are stored in memory. Each time a button is pressed, one beep confirms the feature is on and two beeps confirm the feature is off.

See "Receiving and Identifying Alert Signals" on Page 15 for more information about alerts.

To turn off the detector, press **PWR**.

---

---

## ADJUSTING THE VOLUME

To adjust the detector's volume, hold down **PWR** until the volume reaches the desired level, 1–4 (1 is the lowest level).

## DEMONSTRATING ALERTS

To familiarize yourself with the different alerts your detector sounds, you can run a demonstration. To start the demonstration, press and release **MUTE** and **CITY** at the same time with the detector turned on. The detector demonstrates the alerts for X, K, Ka, safety warning, laser, and VG-2 (if selected), in that order. These audible and visual alerts sound and display.

Alert Type	Audible Alert	Visual Alert
X	High trill	3 and yellow LED
K	Low steady	5 and red LED
Ka	Medium warble	7 and yellow/red LEDs
Safety	Low ascending/descending	S. and red LED
Laser	High-low	L
VG-2	4-tone ascending	–

To stop the demonstration, press **PWR**.

## MUTING ALERTS

While a radar, laser, or safety warning alert is sounding, you can press **MUTE** to temporarily silence the detector for the current alert and any new alert that it receives within 20 seconds. Visual alerts are not affected.

---

---

## USING AUTO QUIET

Auto Quiet reduces the selected audio level to a minimum level about 5 seconds after it detects a radar signal. The audio alert sounds at the minimum level for any new signal received within 20 seconds. VG-2 or laser alerts are not affected.

To turn on Auto Quiet, press **MUTE** when the detector is not sounding an alert. The detector beeps once and briefly displays **A**, then returns to **H** or **C**.

To turn off Auto Quiet, press **MUTE** when the detector is not sounding an alert. The detector beeps twice

## SELECTING THE CITY AND HIGHWAY MODES

Your detector's City mode is designed to reduce annoying false alerts triggered by automatic door openers, intrusion alarms, and other devices that share frequencies with police radar.

**Note:** City mode has no effect on laser or VG-2 operation.

To select the City mode, press **CITY** once. The detector beeps once and displays **C**. If the detector receives a weak speed/safety radar signal in City mode, it beeps twice, then remains quiet unless the signal becomes very strong. If the signal strength increases, the detector again beeps twice.

---

To cancel the City mode, press **CITY** a second time. The detector beeps twice and displays **H**. The highway mode provides maximum alert response for open-road driving.

## SETTING THE VG-2 OPTION

VG-2 is a system used by some law enforcement agencies to detect the use of radar detectors in vehicles. The VG-2 system detects the weak radio signals used in radar detectors. Your radar detector can sense a VG-2 system and shift its operating frequencies out of the range detected by VG-2, making your radar detector essentially invisible to this system.

To turn on the VG-2 option, hold down **MUTE** for 2 seconds. Press **CITY** to engage or cancel. – appears when the detection mode is engaged. Press **PWR** to exit.

### Notes:

- Your detector does not detect speed radar when VG-2 has been detected.
- To use the VG-2 option, you must turn it on each time you turn the detector on.

---

---

## RECEIVING AND IDENTIFYING ALERT SIGNALS

Your detector gives different audible and visual alerts for each signal. In addition, the alert tone pulse rate increases with signal strength and the detector displays a digit from 1 to 9 to indicate the signal strength (1 is weakest and 9 is strongest).

When your detector senses instant-on radar, it sounds an intense, 3-second tone and displays **P**.

### Safety Radar Alerts

Your radar detector detects all safety radar including the new Safety Warning System. This system provides advanced warning of hazards and lets you respond appropriately to potentially dangerous conditions.

**Note:** Not all areas have Safety Warning System transmitters. Your radar detector only alerts you to hazards if the area you are in has transmitters sending signals.

When your radar detector encounters safety radar, it sounds a distinctive tone and displays the signal strength. In addition, your radar detector displays **S**.

### Laser Audio/Visual Alerts

When your radar detector detects a laser signal from ahead or behind, the laser audio sounds and the radar detector displays **L** for as long as the signal is present (for a minimum of 3 seconds).

---

Any laser alert, regardless of duration, requires immediate action! If you are the targeted vehicle, a laser gun can often determine your speed within seconds after you receive an alert. However, if you are traveling near or behind the targeted vehicle and receive an alert, you should have time to respond.

## RESETTING THE DETECTOR

The detector keeps the audio level, city/highway mode, mute mode, auto quiet mode, VG-2 option, and on or off setting in memory when power is removed. When you reapply power, it returns to these same settings.

To reset the detector to its factory default settings, unplug the detector's power cord from the cigarette-lighter socket, hold down **PWR** and **MUTE**, plug in the power cord, wait for the detector to beep twice, then release **PWR** and **MUTE**. The detector turns off the auto quiet and VG-2 options, returns to the highway mode, and sets the volume to its maximum level.

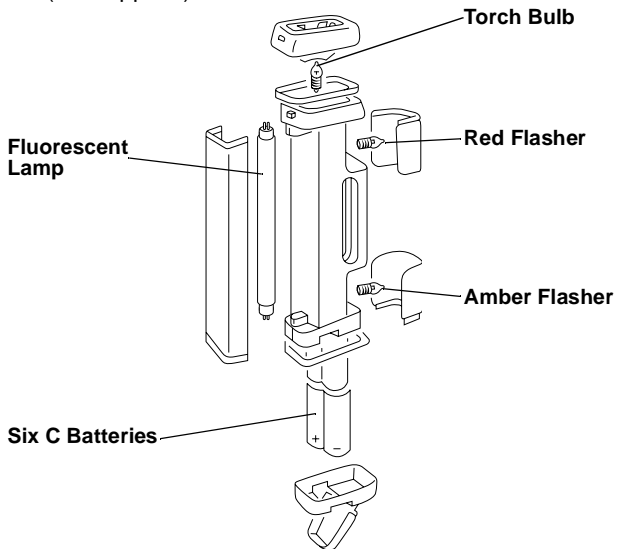


# SAFETY LIGHT

---

---

You can power the Safety Light from your vehicle's battery power (using the supplied DC power cord), or from six C batteries (not supplied).



---

---

## USING VEHICLE BATTERY POWER

1. Plug the supplied DC power cord's barrel plug into the Safety Light's **D.C. 12V** jack, located on the side of the Safety Light between the red flasher and the fluorescent lamp.

**Caution:** The supplied DC power cord supplies at least 12 volts and delivers at least 600 mA, and has a center positive plug that properly fits the Safety Light's **D.C. 12V** jack. Using a power cord that does not meet these specifications could damage the Safety Light or the power cord.

2. Unplug your vehicle's cigarette-lighter and plug the large end of the DC power cord into the cigarette-lighter socket.

## INSTALLING/REPLACING BATTERIES

You can power the Safety Light using six C batteries (not supplied). We recommend alkaline batteries, such as Cat. No. 23-551.

You can also use rechargeable nickel-cadmium batteries, such as RadioShack Cat. No. 23-124, but you must charge them for 10 hours before using them (see "Charging Rechargeable Batteries" on Page 20).

### Cautions:

- Use only fresh batteries of the required size and recommended type.

- 
- 
- Do not mix old and new batteries, different types of batteries (standard, alkaline, or rechargeable), or rechargeable batteries of different capacities.
  - If you use alkaline batteries, do not set the Safety Light's bottom switch to the bottom (charging) position with the DC power cord connected.

Follow these steps to install batteries in the Safety Light.

1. Slide the battery compartment cover in the direction of the arrow marked on it and carefully lift it open.
2. Insert six C batteries into the compartment as indicated by the polarity symbols (+ and -) marked inside.
3. Replace the cover.

When the lights dim, recharge or replace the batteries.

**Cautions:**

- If you do not plan to use the Safety Light for a week or more, remove the batteries. Always remove old or weak batteries. Batteries can leak chemicals that can destroy electronic parts.
- Dispose of old batteries promptly and properly. Do not burn or bury them.

- 
- At the end of a nickel-cadmium battery's useful life, it must be recycled or disposed of properly. Contact your local, county, or state hazardous waste management authorities for information on recycling or disposal programs in your area. Some options that might be available are: municipal curbside collection, drop-off boxes at retailers such as your local RadioShack store, recycling collection centers, and mail-back programs.

## CHARGING RECHARGEABLE BATTERIES

You can charge rechargeable batteries inside the safety light using vehicle battery power (using the supplied DC power cord) or standard AC power (using an optional AC adapter, such as Cat. No. 273-1653). It takes about 10 hours to fully charge the batteries. You can use the Safety Light while charging it, but this increases the charging time to about 20 hours.

**Warning:** Do not connect a power cord to the Safety Light's **D.C. 12V** jack if you installed non-rechargeable batteries (standard, extra-life, or alkaline). Non-rechargeable batteries become hot and can even explode if you try to recharge them.

### Using Vehicle Battery Power

**Caution:** The supplied DC power cord supplies at least 12 volts and delivers at least 600 mA, and has a center positive plug that properly fits the Safety Light's **D.C. 12V** jack. Using a power cord that does not meet these specifications could damage the Safety Light or the power cord.

- 
1. Plug the supplied DC power cord's barrel plug into the Safety Light's **D.C. 12V** jack.
  2. Unplug your vehicle's cigarette-lighter and plug the large end of the DC power cord into the cigarette-lighter socket.
  3. Set the Safety Light's bottom switch to the bottom (charging) position. The charging indicator lights steadily.

## Using AC Power

**Caution:** You must use an AC adapter that supplies at least 12 volts and delivers at least 600 mA. Its center tip must be set to positive and its plug must fit the Safety Light's **D.C. 12V** jack. The recommended adapter meets these specifications. Using an adapter that does not meet these specifications could damage the Safety Light or the adapter.

1. Set the adapter's voltage switch to 12V.
2. Attach the AC adapter's 5.5 mm outer diameter/2.1 mm inner diameter barrel plug, aligning + with TIP, then plug it into the Safety Light's **D.C. 12V** jack.
3. Plug the other end of the adapter into a standard AC outlet.
4. Set the Safety Light's bottom switch to the bottom (charging) position. The charging indicator lights steadily.

---

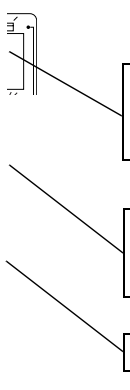
---

# OPERATION

## Cautions:

- Do not immerse the Safety Light in water.
- Keep the lenses clean for brighter, more intense light.
- Do not turn on the fluorescent circuit without a tube installed.
- Turn off the Safety Light when you finish using it.

To operate the safety light, slide the function switches to the desired positions.



Switch	Position	Function
Top	Top	Torch Bulb Lights Steadily
	Middle	Off
	Bottom	Fluorescent Lamp Lights Steadily
Middle	Top	Red/Amber Alternately Flash
	Middle	Off
	Bottom	Red Only Flashes
Bottom	Top	Off
	Bottom	Charging

---

---

# REPLACING THE BULBS

## Fluorescent Lamp

1. Press the head cap release button, then remove the head cap, yellow ring, and transparent cover.
2. Twist both metal end caps on the tube so the pins line up with the slots in the bulb holders, then remove the tube.

**Caution:** Twisting the tube itself could break the tube and cause injury.

3. Replace the tube with a new 9-inch 6-watt tube.
4. Replace the transparent cover, yellow ring, and head cap.

## Torch Bulb

1. Press the head cap release button, then remove the head cap.
2. Pull out the bulb and replace it with a new 8.63 volt, 0.5 amp bulb.
3. Replace the head cap.

---

## Red Flasher Bulb

1. Press the head cap release button, then remove the head cap, yellow ring, and red flasher cover.
2. Unscrew the bulb, remove it, and replace it with a new 9 volt, 0.3 amp bulb.
3. Insert the red flasher cover's tab into the slot in the case and replace the cover.
4. Replace the yellow ring and the head cap.

## Amber Flasher Bulb

1. Open the battery compartment cover and remove the batteries, if necessary.
2. Use a Phillips screwdriver to unscrew the two screws, then lift off the end cap.
3. Pull off the yellow ring and amber flasher cover.
4. Unscrew the bulb and replace it with a new 9 volt, 0.3 amp bulb.
5. Insert the amber flasher cover's tab into the slot in the case and replace the cover.
6. Replace the yellow ring.
7. Align the screw holes in the end cap with those in the case, replace the end cap, and secure it with the screws.



# TROUBLESHOOTING

---

---

If you have problems operating your radar/laser detector, the suggestions in this section might help. If you cannot solve the problem after trying these suggestions, take your detector to your local RadioShack store for assistance.

## **If the detector does not turn on:**

- Be sure all power connections are secure.
- Check the fuse that controls power to the cigarette-lighter socket. See your vehicle's owner's manual.
- Check the fuse in the cigarette-lighter plug. See "Replacing the Fuse" on Page 27.
- The cigarette-lighter socket might be dirty. Clean it to give a good, clean connection.

**Caution:** Do not place any metal object other than the cigarette lighter or a cigarette-lighter plug in the cigarette-lighter socket. Doing so could blow a fuse in your vehicle or cause the metal object to become very hot.

## **If the detector gives a false alert when the vehicle hits bumps in the road:**

- Check the power connections.

---

---

**If the detector gives a false alert when you use accessories such as power windows, motorized mirrors, brakes, and so on:**

- Check the vehicle's electrical system, including the main battery cable and alternator connections.
- Install a filter capacitor (1,000  $\mu\text{f}$ , 35 volts, such as Cat. No. 272-1032) on the back of the cigarette-lighter socket, across the power connections.

**If the detector performs the power on self-test (see "Turning the Detector On and Off" on Page 11), but does not respond to radar signals when you see a police car:**

- A police car might not be equipped with radar, or might be using instant-on radar and not have the radar gun triggered (see the separate booklet *Questions and Answers About Vehicle Speed Detection*).
- Police might be using VASCAR-type speed detection (see the separate booklet *Questions and Answers About Vehicle Speed Detection*).

**If the detector has poor laser detection range:**

- Be sure the laser detection lenses are not blocked.
- Use lens-cleaning solution to clean the laser detection lenses and the windshield.

---

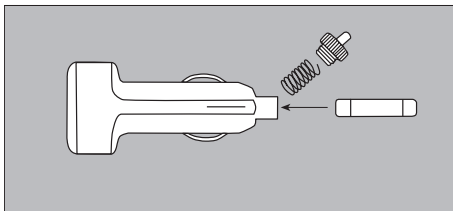
---

## REPLACING THE FUSE

If the detector stops operating, check the fuse in the DC power cord's cigarette-lighter plug. If it has blown, follow these steps to replace it with a 2-Amp,  $1\frac{1}{4} \times \frac{1}{4}$  mm, fast-acting fuse (Cat. No. 270-1007).

**Caution:** Using a fuse that does not meet these ratings or defeating the fuse protection can damage your detector or the vehicle's electrical system.

1. Carefully unscrew the tip of the cigarette-lighter plug.



2. Remove the tip from the cigarette-lighter plug, then remove the old fuse.

**Note:** Take care not to lose the spring inside the holder or the metal ring.

3. Replace the fuse.
4. Press the cigarette-lighter plug's tip down into the body, then screw it back in.

**Caution:** Be sure you press the cigarette-lighter plug's tip down before screwing it in, or you might damage the plug.

# DETECTOR WARRANTY

## Limited One-Year Warranty

This product is warranted by RadioShack against manufacturing defects in material and workmanship under normal use for one (1) year from the date of purchase from RadioShack company-owned stores and authorized RadioShack franchisees and dealers. EXCEPT AS PROVIDED HEREIN, RadioShack MAKES NO EXPRESS WARRANTIES AND ANY IMPLIED WARRANTIES, INCLUDING THOSE OF MERCHANTABILITY AND FITNESS FOR A PARTICULAR PURPOSE, ARE LIMITED IN DURATION TO THE DURATION OF THE WRITTEN LIMITED WARRANTIES CONTAINED HEREIN. EXCEPT AS PROVIDED HEREIN, RadioShack SHALL HAVE NO LIABILITY OR RESPONSIBILITY TO CUSTOMER OR ANY OTHER PERSON OR ENTITY WITH RESPECT TO ANY LIABILITY, LOSS OR DAMAGE CAUSED DIRECTLY OR INDIRECTLY BY USE OR PERFORMANCE OF THE PRODUCT OR ARISING OUT OF ANY BREACH OF THIS WARRANTY, INCLUDING, BUT NOT LIMITED TO, ANY DAMAGES RESULTING FROM INCONVENIENCE, LOSS OF TIME, DATA, PROPERTY, REVENUE, OR PROFIT OR ANY INDIRECT, SPECIAL, INCIDENTAL, OR CONSEQUENTIAL DAMAGES, EVEN IF RadioShack HAS BEEN ADVISED OF THE POSSIBILITY OF SUCH DAMAGES.

Some states do not allow the limitations on how long an implied warranty lasts or the exclusion of incidental or consequential damages, so the above limitations or exclusions may not apply to you.

In the event of a product defect during the warranty period, take the product and the RadioShack sales receipt as proof of purchase date to any RadioShack store. RadioShack will, at its option, unless otherwise provided by law: (a) correct the defect by product repair without charge for parts and labor; (b) replace the product with one of the same or similar design; or (c) refund the purchase price. All replaced parts and products, and products on which a refund is made, become the property of RadioShack. New or reconditioned parts and products may be used in the performance of warranty service. Repaired or replaced parts and products are warranted for the remainder of the original warranty period. You will be charged for repair or replacement of the product made after the expiration of the warranty period.

This warranty does not cover: (a) damage or failure caused by or attributable to acts of God, abuse, accident, misuse, improper or abnormal usage, failure to follow instructions, improper installation or maintenance, alteration, lightning or other incidence of excess voltage or current; (b) any repairs other than those provided by a RadioShack Authorized Service Facility; (c) consumables such as fuses or batteries; (d) cosmetic damage; (e) transportation, shipping or insurance costs; or (f) costs of product removal, installation, set-up service adjustment or reinstallation.

This warranty gives you specific legal rights, and you may also have other rights which vary from state to state.

RadioShack Customer Relations, Dept. W, 100 Throckmorton St., Suite 600,  
Fort Worth, TX 76102

*We Service What We Sell*

3/97

# SAFETY LIGHT WARRANTY

## Limited Ninety-Day Warranty

This product is warranted by RadioShack against manufacturing defects in material and workmanship under normal use for ninety (90) days from the date of purchase from RadioShack company-owned stores and authorized RadioShack franchisees and dealers. EXCEPT AS PROVIDED HEREIN, RadioShack MAKES NO EXPRESS WARRANTIES AND ANY IMPLIED WARRANTIES, INCLUDING THOSE OF MERCHANTABILITY AND FITNESS FOR A PARTICULAR PURPOSE, ARE LIMITED IN DURATION TO THE DURATION OF THE WRITTEN LIMITED WARRANTIES CONTAINED HEREIN. EXCEPT AS PROVIDED HEREIN, RadioShack SHALL HAVE NO LIABILITY OR RESPONSIBILITY TO CUSTOMER OR ANY OTHER PERSON OR ENTITY WITH RESPECT TO ANY LIABILITY, LOSS OR DAMAGE CAUSED DIRECTLY OR INDIRECTLY BY USE OR PERFORMANCE OF THE PRODUCT OR ARISING OUT OF ANY BREACH OF THIS WARRANTY, INCLUDING, BUT NOT LIMITED TO, ANY DAMAGES RESULTING FROM INCONVENIENCE, LOSS OF TIME, DATA, PROPERTY, REVENUE, OR PROFIT OR ANY INDIRECT, SPECIAL, INCIDENTAL, OR CONSEQUENTIAL DAMAGES, EVEN IF RadioShack HAS BEEN ADVISED OF THE POSSIBILITY OF SUCH DAMAGES.

Some states do not allow the limitations on how long an implied warranty lasts or the exclusion of incidental or consequential damages, so the above limitations or exclusions may not apply to you.

In the event of a product defect during the warranty period, take the product and the RadioShack sales receipt as proof of purchase date to any RadioShack store. RadioShack will, at its option, unless otherwise provided by law: (a) correct the defect by product repair without charge for parts and labor; (b) replace the product with one of the same or similar design; or (c) refund the purchase price. All replaced parts and products, and products on which a refund is made, become the property of RadioShack. New or reconditioned parts and products may be used in the performance of warranty service. Repaired or replaced parts and products are warranted for the remainder of the original warranty period. You will be charged for repair or replacement of the product made after the expiration of the warranty period.

This warranty does not cover: (a) damage or failure caused by or attributable to acts of God, abuse, accident, misuse, improper or abnormal usage, failure to follow instructions, improper installation or maintenance, alteration, lightning or other incidence of excess voltage or current; (b) any repairs other than those provided by a RadioShack Authorized Service Facility; (c) consumables such as fuses or batteries; (d) cosmetic damage; (e) transportation, shipping or insurance costs; or (f) costs of product removal, installation, set-up service adjustment or reinstallation.

This warranty gives you specific legal rights, and you may also have other rights which vary from state to state.

RadioShack Customer Relations, Dept. W, 100 Throckmorton St., Suite 600,  
Fort Worth, TX 76102

*We Service What We Sell*

3/97

# NOTES

---

---



**RadioShack**  
**A Division of Tandy Corporation**  
**Fort Worth, Texas 76102**



## Free Manuals Download Website

<http://myh66.com>

<http://usermanuals.us>

<http://www.somanuals.com>

<http://www.4manuals.cc>

<http://www.manual-lib.com>

<http://www.404manual.com>

<http://www.luxmanual.com>

<http://aubethermostatmanual.com>

Golf course search by state

<http://golfingnear.com>

Email search by domain

<http://emailbydomain.com>

Auto manuals search

<http://auto.somanuals.com>

TV manuals search

<http://tv.somanuals.com>