
Smoke and Fire Alarm with Silence Control

Your RadioShack Smoke and Fire Alarm is a simple-to-install warning device. The alarm's loud tone helps warn you if there is smoke present, and its low-battery indicator lets you know when it is time to change the battery.

You can set the alarm so it sounds a reduced tone when there is smoke from a known source (such as cooking) in the area, to reduce false alarms.

Important Notes:

- Sale and use of alarms for mobile applications is prohibited in California and certain other states. Check local regulations before installing this alarm.
- Your alarm contains less than 1 microcurie (37 kilobecquerel) of Americium 241, a radioactive material. To avoid exposure to this substance, do not tamper with the sealed radioactive source inside the alarm.
- To dispose of the alarm safely, return it to your local RadioShack store or your local Health Department. Do not dispose of your alarm in any other way.

This alarm complies with State of California regulations requiring that temporal audible fire alarm signals be provided when a fire alarm system is used for total evacuation of occupants.

All fire alarm systems installed in the State of California must comply with these regulations. If you are not sure if your state requires that your fire alarm system comply with these regulations, consult your state's fire regulatory authority.

RECOMMENDED ALARM LOCATIONS

If you are installing a single alarm, install it as close as possible to bedrooms. Since bedrooms are usually farthest from the exit, install the alarm in the hallway outside the bedrooms.

Depending on the layout of your home or office, you might need to install more than one alarm. Install additional alarms in the following places:

- in each bedroom
- on each floor level
- stairways
- in sleeping areas where electrical appliances are operated

Never install your alarm:

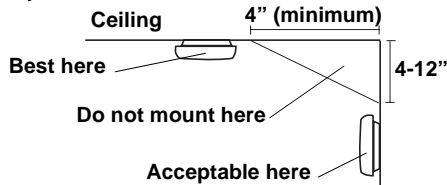
- in a garage (combustion products are present when you start your automobile)
- in front of forced air ducts used for heating and air conditioning
- at the peak of an A-frame type of ceiling
- in areas where the temperature might fall below 40°F (4.4°C) or rise above 100°F (37.8°C).

During a fire, smoke, heat, and other combustion products rise to the ceiling and spread horizontally. In standard residential structures, install the alarm on the ceiling in the center of a room. (This places it closest to all points in the room).

© 1999 Tandy Corporation.
All Rights Reserved.

RadioShack is a registered trademark used by Tandy Corporation.

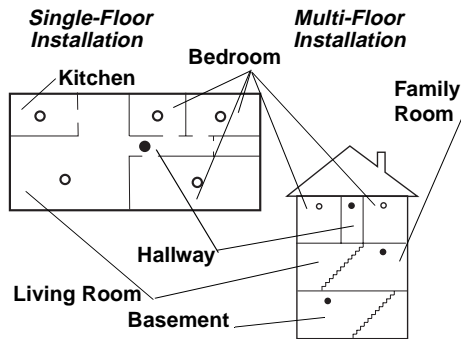
Mount the alarm at least 4 inches (10 cm) from a side wall and 2 feet (.61 meters) from any corner.



In a mobile home, a thermal barrier might form at the ceiling during a fire. Therefore, if you are installing the alarm in a mobile home, mount the alarm on an inside partition on the wall.

Typical Installation

Here are typical installations for both single- and multiple-floor locations.

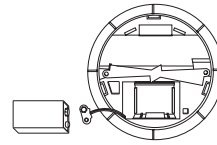


- Install alarm here for minimum protection
- Install alarm here for additional protection

INSTALLING/REPLACING THE BATTERY

Your alarm comes with one 9-volt battery for power. To install the battery, snap the battery onto the terminals.

Caution: The battery fits onto the terminals only one way. Do not force it.



When the alarm repeatedly sounds a short beep every 30–40 seconds or the alarm does not sound when there is smoke in the area, replace the battery with a RadioShack alkaline battery (Cat. No. 23-553, not supplied).

Caution: Dispose of old batteries promptly and properly. Do not burn or bury them.

MOUNTING THE ALARM

The alarm's mounting bracket lets you mount and position the alarm as necessary.

Note: The alarm has a safety feature that will not let you mount it onto the bracket until you have installed a battery in the alarm.

Follow these steps to mount the alarm.

1. Select a mounting location using the information in "Recommended Alarm Locations," then use the back of the alarm as a template to mark the mounting screw locations on the wall or ceiling.
2. Drill a hole at each marked location.
3. Use a hammer to tap a wall anchor into each hole, if necessary.
4. Hold the mounting bracket over the wall anchors, thread one of the supplied mounting screws into each hole, then tighten the screws.
5. Align the alarm onto the mounting bracket, then push down and turn the alarm clockwise onto the bracket to secure it.

OPERATION

The alarm operates once a battery is installed. When it senses smoke or other combustion products, the alarm sounds a loud tone which continues until the air is cleared.

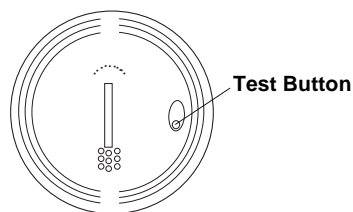
Important: If the alarm sounds, check for a fire. If a fire is discovered, **leave the building and call the fire department.**

Note: Smoke from household activities such as cooking and smoking will not normally set off the alarm unless that smoke is blown directly at it.

TESTING THE ALARM

Important: Test your alarm at least once a week.

To test the alarm, hold down the test button on the front of the alarm for about 2 seconds. The alarm sounds a loud tone until you release the test button.



USING THE SILENCE CONTROL

You can set the alarm so it sounds a lower-volume tone when there is smoke from a known source (such as cooking) in the area, to reduce false alarms. To turn on the silence control, hold down the test button on the front of the alarm for at least 6 seconds, then re-

lease the button. The alarm sounds a soft tone about every 30 to 40 seconds and reduces its sensitivity to smoke. After about 8 minutes, the alarm automatically resets itself to sound a loud tone when it detects smoke.

NATIONAL FIRE PROTECTION ASSOCIATION REQUIRED PROTECTION

For your information, the National Fire Protection Association's Standard 72 reads as follows:

"2-2.1.1.1 Smoke detectors shall be installed outside of each separate sleeping area in the immediate vicinity of the bedrooms and on each additional story of the family living unit including basements and excluding crawl spaces and unfinished attics. In new construction, a smoke detector shall be installed in each sleeping room."

"A-2.5.2.1 Smoke Detection — Are More Smoke Detectors Desirable? The required number of smoke detectors might not provide reliable early warning protection for those areas separated by a door from the areas protected by the required smoke detectors. For this reason, it is recommended that the householder consider the use of additional smoke detectors for those areas for increased protection. The additional areas include the basement, bedrooms, dining room, furnace room, utility room, and hallways not protected by the required smoke detectors. The installation of smoke detectors in kitchens, attics (finished or unfinished), or garages is not normally recommended, as these locations occasionally experience conditions that can result in improper operation."

This equipment should be installed in accordance with the National Fire Protection Association's Standard 72. (National Fire Protection Association, Batterymarch Park, Quincy, MA 02269).

- Handle the alarm gently and carefully. Don't drop it.
- Keep the alarm away from dust and dirt.
- Wipe the alarm with a damp cloth occasionally to keep it looking new.

CARE AND MAINTENANCE

To care for your alarm so it will serve you for years:

- Keep the alarm dry. If it gets wet, wipe it dry immediately.
- Use and store the alarm only in normal temperature environments.

Modifying or tampering with the alarm's internal components can cause a malfunction and invalidate its warranty. If your alarm is not performing as it should, take it to your local RadioShack store for assistance.

Limited Ninety-Day Warranty

This product is warranted by RadioShack against manufacturing defects in material and workmanship under normal use for ninety (90) days from the date of purchase from RadioShack company-owned stores and authorized RadioShack franchisees and dealers. EXCEPT AS PROVIDED HEREIN, RadioShack MAKES NO EXPRESS WARRANTIES AND ANY IMPLIED WARRANTIES, INCLUDING THOSE OF MERCHANTABILITY AND FITNESS FOR A PARTICULAR PURPOSE, ARE LIMITED IN DURATION TO THE DURATION OF THE WRITTEN LIMITED WARRANTIES CONTAINED HEREIN. EXCEPT AS PROVIDED HEREIN, RadioShack SHALL HAVE NO LIABILITY OR RESPONSIBILITY TO CUSTOMER OR ANY OTHER PERSON OR ENTITY WITH RESPECT TO ANY LIABILITY, LOSS OR DAMAGE CAUSED DIRECTLY OR INDIRECTLY BY USE OR PERFORMANCE OF THE PRODUCT OR ARISING OUT OF ANY BREACH OF THIS WARRANTY, INCLUDING, BUT NOT LIMITED TO, ANY DAMAGES RESULTING FROM INCONVENIENCE, LOSS OF TIME, DATA, PROPERTY, REVENUE, OR PROFIT OR ANY INDIRECT, SPECIAL, INCIDENTAL, OR CONSEQUENTIAL DAMAGES, EVEN IF RadioShack HAS BEEN ADVISED OF THE POSSIBILITY OF SUCH DAMAGES.

Some states do not allow the limitations on how long an implied warranty lasts or the exclusion of incidental or consequential damages, so the above limitations or exclusions may not apply to you.

In the event of a product defect during the warranty period, take the product and the RadioShack sales receipt as proof of purchase date to any RadioShack store. RadioShack will, at its option, unless otherwise provided by law: (a) correct the defect by product repair without charge for parts and labor; (b) replace the product with one of the same or similar design; or (c) refund the purchase price. All replaced parts and products, and products on which a refund is made, become the property of RadioShack. New or reconditioned parts and products may be used in the performance of warranty service. Repaired or replaced parts and products are warranted for the remainder of the original warranty period. You will be charged for repair or replacement of the product made after the expiration of the warranty period.

This warranty does not cover: (a) damage or failure caused by or attributable to acts of God, abuse, accident, misuse, improper or abnormal usage, failure to follow instructions, improper installation or maintenance, alteration, lightning or other incidence of excess voltage or current; (b) any repairs other than those provided by a RadioShack Authorized Service Facility; (c) consumables such as fuses or batteries; (d) cosmetic damage; (e) transportation, shipping or insurance costs; or (f) costs of product removal, installation, set-up service adjustment or reinstallation.

This warranty gives you specific legal rights, and you may also have other rights which vary from state to state.

RadioShack Customer Relations, 200 Taylor Street, 6th Floor, Fort Worth, TX 76102

We Service What We Sell

04/99

Radio Shack
A Division of Tandy Corporation
Fort Worth, Texas 76102

07A99

Printed in China

Free Manuals Download Website

<http://myh66.com>

<http://usermanuals.us>

<http://www.somanuals.com>

<http://www.4manuals.cc>

<http://www.manual-lib.com>

<http://www.404manual.com>

<http://www.luxmanual.com>

<http://aubethermostatmanual.com>

Golf course search by state

<http://golfingnear.com>

Email search by domain

<http://emailbydomain.com>

Auto manuals search

<http://auto.somanuals.com>

TV manuals search

<http://tv.somanuals.com>