



indoor/outdoor thermometer and hygro sensor

Thank you for purchasing your Indoor/Outdoor Thermometer and Hygro Sensor from RadioShack. You can mount it on a wall or place it on a flat surface using the included stand. Your thermometer displays indoor and outdoor temperatures, as well as humidity information. And, your thermometer even features an atomic alarm clock.



Note: Actual product may vary from the images found in this document.

what's included

thermometer and stand • thermo-sensor
user's guide

Please read this user's guide before installing, setting up and using your new product.
www.radioshack.com

installing batteries

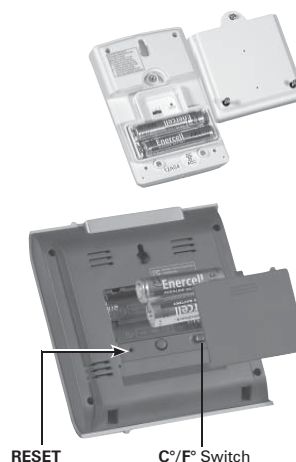
in your sensor

- 1 Remove the battery compartment cover.
- 2 Insert two AAA batteries, matching the polarity symbols (+ and -), marked inside.
- 3 Select **CHANNEL 1, 2, or 3** inside the compartment.
- 4 Press **RESET** to initialize the transmission.
- 5 Replace the cover and secure it with the screws.

in the thermometer

- 1 Remove the battery cover.
- 2 Insert two AA batteries, matching the polarity symbols (+ and -) marked inside.
- 3 Replace the battery cover.

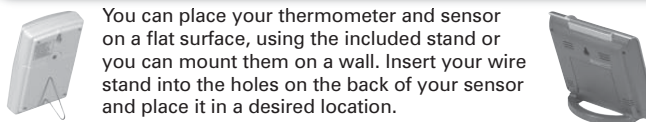
Replace the batteries when the low battery icon appears. Press **RESET** when you replace the batteries, or if it does not perform normally. All settings will return to the default values and you will lose all stored information.



battery notes

- For the best results, install batteries in the remote sensor first, and then the thermometer. Press **RESET** after each battery replacement.
-) displays when battery power is low.
- Dispose of old batteries promptly and properly. Do not burn or bury batteries.
- Do not use rechargeable batteries.
- Use only fresh batteries of the required size and recommended type.
- Do not use batteries of different types capacities, or chemistries.
- If you do not plan to use this product for a month, remove the batteries. Batteries can leak chemicals that can damage electronic parts.

setting up your thermometer and sensor



You can place your thermometer and sensor on a flat surface, using the included stand or you can mount them on a wall. Insert your wire stand into the holes on the back of your sensor and place it in a desired location.



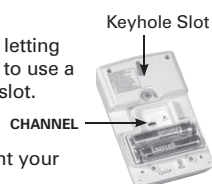
Keyhole Slot

mounting your thermometer

- 1 Drill a hole in the wall.
- 2 Thread a screw (not supplied) into the hole, letting it extend about 3/16" from the wall. Be sure to use a screw with a head that fits into the keyhole slot.
- 3 Slide the thermometer down until it is secure.

mounting your sensor

- 1 Drill a hole in the wall.
- 2 Thread a screw (not supplied) into the hole, letting it extend about 3/16" from the wall. Be sure to use a screw with a head that fits into the keyhole slot.
- 3 Slide the sensor down until it is secure.



Keyhole Slot

Be sure to insert the batteries before you mount your sensor.

using your thermometer and sensor

Press **RESET** on the sensor to receive a signal. Then, press and hold **MEMORY** and **CHANNEL** on your thermometer to search for the sensor.

° - ° blinks on your thermometer while it is searching. To clear readings in memory, press and hold **MEMORY** for 2 seconds. A beep sounds to confirm the memory is clear.

If you have more than one sensor, select a different channel for each one. Three signal icons display when at least one channel has been found.

selecting sensor channels

To auto-scan between sensors, press and hold **CHANNEL** for 2 seconds. Each sensor's data will be displayed for 3 seconds. To end auto-scan, press **CHANNEL** or **MEMORY**. To select a specific channel, press **Channel**. The following icons display based on the selected channel.

Kinetic Wave Icon				
Designated Display	Indoor Display	Remote Display Channel 1	Remote Display Channel 2	Remote Display Channel 3

Trend line - Indicates the trend of temperature and humidity.

↘ Falling ↗ Rising → Steady

Current Temperature → 69.8°F

Humidity Reading → 32%

MEMORY - Press to view current or saved maximum and minimum temperature or humidity readings.

▲ - Press to increase settings and activate the Atomic Clock signal reception.

▼ - Press to decrease the setting.

MODE - Press to change display/settings.

3 - Press to view/change alarm settings.

CHANNEL - Press to switch to a different sensor.

using your Atomic alarm clock

Your thermometer shows the current time, time zone, and day of week in English, Spanish, or French under normal mode. The time is automatically updated by the US Atomic Clock in Boulder, Colorado unless you disable this feature. Signals are collected by the thermometer when it is within 932 miles (1500 km) of a signal.

Initial reception takes 2-10 minutes, and is initiated when you first set up the unit, and whenever you press **RESET**. The following icons display in the clock area based on your signal strength.

3 - Press to view or change alarm settings.

- % displays when a strong signal is present.
- **6** displays when a weak signal is present.
- ' displays when there is no signal present.



If you cannot receive Atomic Clock signals, press and hold **ZONE** for 2 seconds until the signal icon disappears. This turns the atomic clock off. Then, manually set the clock.

To force a manual search for Atomic Clock signals, press and hold **e** for 2 seconds until a beep sounds and the signal icon displays. If no signal is found, check the batteries.

% indicates the Atomic Clock feature is on. No icon indicates it is off.

Note: When you use the Atomic Clock function, press **ZONE** first to choose your corresponding time zone.

set your clock

- Open the battery compartment.
- Press **ZONE** repeatedly to display the desired Time Zone: (P) Pacific, (M) Mountain, (C) Central, or (E) Eastern.
- Close the battery compartment.
- Press and hold **MODE** for 2 seconds until a beep sounds. The Clock Area will blink.
- Press **MODE** repeatedly to select the hour, minute, year, month, day and language. Press or hold **e** or **d** to change the setting. Press **MODE** to confirm.

Notes

- When you set your clock, the display returns to normal mode if no button is pressed within 60 seconds.
- AM/PM appears for morning and afternoon time.
- The language options are (E) English, (F) French, and (S) Spanish.

Press **MODE** repeatedly to toggle between clock with seconds, clock with weekday, and calendar.

This product is equipped with a 2-minute crescendo alarm and 8-minute snooze.

Press **3**. The alarm time and on/off status displays in the clock area.

set your alarm

- Press **3**. The alarm time shows at the right bottom of the clock display.
- Press and hold **3** for 2 seconds. The Alarm hour blinks.
- Press **3** to select the hour and minute. Press **e** or **d** to change settings. Press **3** to confirm.

Press **3** to activate or deactivate the alarm. **3** shows in the clock area when the alarm is activated.

Press **SNOOZE** to silence the alarm for 8 minutes. Press **3** to stop the alarm for 24 hours.

Notes

- If no button is pressed, the alarm automatically shuts off after 2 minutes. It will sound again after 8 minutes.
- Flashing **3** indicates the alarm sounds for 2 minutes every 8 minutes. Press **MODE** to change the display from alarm to date.

troubleshooting

Problem	Symptom	Remedy
Calendar	Strange date/month	Change language.
Clock	Cannot adjust clock	Disable Atomic clock.
	Cannot auto-sync	1. Adjust batteries. 2. Press RESET . 3. Manually activate Atomic Clock feature.
Temperature	Shows "LLL" or "HHH"	Temperature is out of range. Indoor Range: 23°F to 122°F Outdoor Range: -4°F to 140°F)
Remote Sensor	Cannot locate remote sensor	Check batteries. Check location.
	Cannot change channel	Check sensors. Only one sensor is working.
	Data does not match thermometer	Initiate a manual sensor search.

hints and tips

- LLL or HHH appears when the temperature is out of range.
- Place the sensor out of direct sunlight and moisture.
- Do not place the sensor more than 100 feet (30.5 meters) from the thermometer.
- Position the sensor facing the thermometer, minimizing obstructions such as doors, walls, and furniture. Place it away from metallic or electronic objects.
- Position the sensor close to the thermometer during cold winter months, as below-freezing temperatures may affect battery performance and signal transmission.
- If you still do not receive a signal, check the batteries, obstructions, and remote unit location.
- Signals from household devices, such as doorbells, electronic garage doors, and home security systems may cause temporary reception failure. This is normal and does not affect general product performance. The reception will resume once the interference ends.
- If the unit's performance fails due to low temperature, the unit will resume proper functioning as the temperature rises to within the normal temperature range.

Product	indoor/outdoor thermometer and hygro sensor
Model	63-1089
Responsible Party	RadioShack 300 RadioShack Circle Fort Worth, TX 76102
Phone	817-415-3200



care and safety

care

Clean your thermometer and sensor with a slightly damp cloth and alcohol-free mild detergent.

safety

- Never immerse your thermometer and sensor in water. This can cause electrical shock and can damage the units.
- Do not subject the thermometer to extreme force, shock, or temperatures.
- Do not tamper with the internal components.
- Do not scratch the LCD display.
- Do not make any changes or modifications to this product. Unauthorized changes may void your right to use the product. The technical specification of this product and contents of this user guide are subject to change without notice.

FCC Information

This equipment has been tested and found to comply with the limits for a Class B digital device, pursuant to Part 15 of the FCC Rules. These limits are designed to provide reasonable protection against harmful interference in a residential installation. This equipment generates, uses, and can radiate radio frequency energy and, if not installed and used in accordance with the instructions, may cause harmful interference to radio communications. However, there is no guarantee that interference will not occur in a particular installation. If this equipment does cause harmful interference to radio or television reception, which can be determined by turning the equipment off and on, the user is encouraged to try to correct the interference by one or more of the following measures:

- Reorient or relocate the receiving antenna.
- Increase the separation between the equipment and receiver.
- Connect the equipment into an outlet on a circuit different from that to which the receiver is connected.

Consult your local RadioShack store or an experienced radio/TV technician for help.

If you cannot eliminate the interference, the FCC requires that you stop using your thermometer. Changes or modifications not expressly approved by RadioShack may cause interference and void the user's authority to operate the equipment.

This device complies with Part 15 of the FCC Rules. Operation is subject to the following two conditions: (1) This device may not cause harmful interference, and (2) This device must accept any interference received, including interference that may cause undesired operation.

limited one-year warranty

This product is warranted by RadioShack against manufacturing defects in material and workmanship under normal use for one (1) year from the date of purchase from RadioShack company-owned stores and authorized RadioShack franchisees and dealers. For complete warranty details and exclusions, check with your local RadioShack store.

RadioShack Customer Relations
300 RadioShack Circle, Fort Worth, TX 76102
04/04



Free Manuals Download Website

<http://myh66.com>

<http://usermanuals.us>

<http://www.somanuals.com>

<http://www.4manuals.cc>

<http://www.manual-lib.com>

<http://www.404manual.com>

<http://www.luxmanual.com>

<http://aubethermostatmanual.com>

Golf course search by state

<http://golfingnear.com>

Email search by domain

<http://emailbydomain.com>

Auto manuals search

<http://auto.somanuals.com>

TV manuals search

<http://tv.somanuals.com>