

Dominion KX II Blade Server Configuration Guide – Release 2.1.10, v1.0

Version: Dominion KX Release 2.1.10

Date: July 9, 2009

Applicable Dominion KX II models:

DKX2-108, DKX2-116, DKX2-132

DKX2-216, DKX2-232

DKX2-416, DKX2-432, DKX2-464

DKX2-832, DKX2-864

Overview:

This guide contains instructions on the configuration of IBM and Dell blade server chassis KVM and management modules to enable integration with the Dominion KX II blade server feature introduced in Release 2.1. The guide provides supplemental information to the Dominion KX II Users Guide featuring screen shots and detailed instructions.

Contents:

The guide contains instructions and screenshots for configuration of the following blade server types:

- IBM BladeCenter E or H with Advanced Management Module)
- Dell 1855/1955 with Analog KVM Module
- Dell M1000e with iKVM Module

Related Documents:

Dominion KX II User Guide (Release 2.1.10)

Dominion KX II CIM Guide (Release 2.1.10)

Dominion KX II Release Notes (Release 2.1.10)

Caution:

This guide has been prepared based on specific versions of the IBM and Dell blade servers, which may differ from the version you may have. Consult the manufacturer documentation for your particular version for more information.

IBM Advanced Management Module Setup

This section describes the configuration required for the IBM BladeCenter Advanced Management Module to integrate with Raritan's Dominion KX II.

For the IBM BladeCenter, the Advanced Management Module (AMM) is supported. The older Management Module has not been certified in this release. The KX II only supports auto-discovery for AMM[1] as the acting primary management module.

The following IBM BladeCenter minimum AMM firmware is recommended:

Management Module Firmware
Main application: BPET36K
Released: 04-22-08
Name: CNETMNUS.PKT
Rev: 54

Under **MM Control**, access the **Login Profiles** to verify or create a user account for access from the Dominion KX II.

Management Module Login Configuration

Use the following links to jump down to different sections on this page.

[Login Profiles](#)

[Account Security Management](#)

Login Profiles

To configure a login profile, click a link in the "Login ID" column.

	Login ID	Role	Active Sessions	Last Login	Password Compliant	Days Until Password Expires	Dormant	State	Action
1	USERID	C	0	Never	Yes	n/a		Active	Disable
2	kperveil	S	0	09/24/07 15:12:57	Yes	n/a		Active	
3	andy	S	0	09/18/07 09:28:43	Yes	n/a		Active	
4	toms	O	1	09/25/07 09:14:11	Yes	n/a		Active	Disable
5	jimrix	O	0	04/10/07 22:22:40	Yes	n/a		Active	Disable
6	dale	O	0	Never	Yes	n/a		Active	Disable
7	stephen	O	0	Never	Yes	n/a		Active	Disable
8	dallas	O	0	Never	Yes	n/a		Active	Disable
9	hfuser	O	0	Never	Yes	n/a		Active	Disable
10	angela	O	0	Never	Yes	n/a		Active	Disable
11	phyllis	C	0	04/26/07 01:24:31	Yes	n/a		Active	Disable
12	~ not used ~								

Certain operations performed via the SSH connection require “Supervisor” (administrator level) privileges (e.g. setting idle timeout), so the account has to be created accordingly.

Here are some typical errors if Supervisor level control is not provided:

Communication Error	Error communicating with 'IBM-H-CHASSIS' connected to port '12' failed to 'failed to set Media Tray', <-7014:User does not have the authority to issue this command.>.
Communication Error	Error communicating with 'IBM-H-CHASSIS' connected to port '12' failed to 'connect to target', <-7014:User does not have the authority to issue this command.>.

For example, “new_user” has been assigned a “Supervisor” role.

BladeCenter H Advanced Management Module

Login Profiles ?

To configure a login profile, click a link in the "Login ID" column.

	Login ID	Role	Active Sessions	Last Login	Password Compliant	Days Until Password Expires	Dormant	State	Action
1	USERID	S	2	06/30/09 09:04:37	Yes	n/a		Active	
2	admin	S	0	12/05/08 09:35:12	Yes	n/a		Active	
3	admin1	S	0	12/05/08 09:39:49	Yes	n/a		Active	
4	new_user	S	0	Never	Yes	n/a		Active	
5	tester	O	0	06/19/09 16:13:30	Yes	n/a		Active	Disable
6	~ not used ~								
7	~ not used ~								
8	~ not used ~								
9	~ not used ~								
10	~ not used ~								
11	~ not used ~								
12	~ not used ~								

The login ID can be created by selecting a login id that is currently “not used”, and can subsequently be edited by selecting it.

Login Profile 4 ?

Login ID:

New password:

Confirm password:

Maximum simultaneous active sessions: ▼

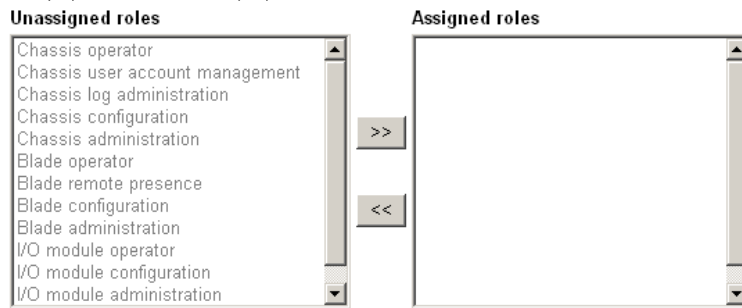
Role

- Supervisor (requires Scope selection)
- Operator (readonly, all scopes)
- Custom (requires Roles and Scopes)

Unassigned roles

- Chassis operator
- Chassis user account management
- Chassis log administration
- Chassis configuration
- Chassis administration
- Blade operator
- Blade remote presence
- Blade configuration
- Blade administration
- I/O module operator
- I/O module configuration
- I/O module administration

Assigned roles



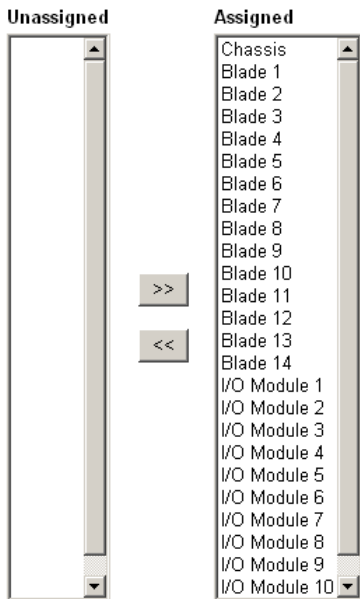
The diagram shows two vertical lists. The left list, titled 'Unassigned roles', contains 12 items. The right list, titled 'Assigned roles', is currently empty. Between the two lists are two buttons: a right-pointing arrow (>>) and a left-pointing arrow (<<).

Access Scope

Unassigned

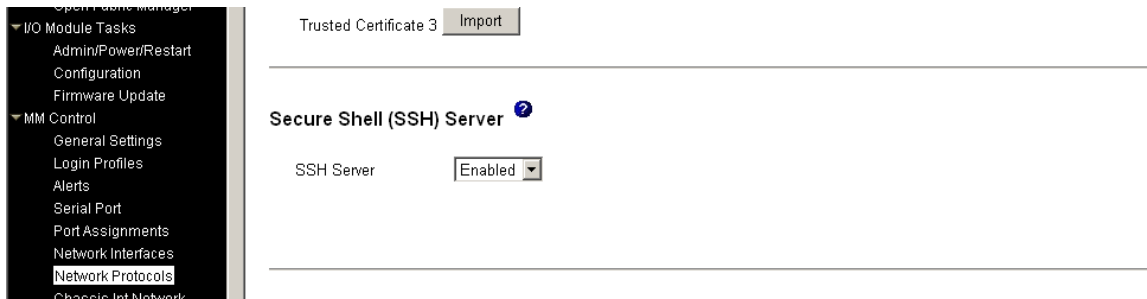
Assigned

- Chassis
- Blade 1
- Blade 2
- Blade 3
- Blade 4
- Blade 5
- Blade 6
- Blade 7
- Blade 8
- Blade 9
- Blade 10
- Blade 11
- Blade 12
- Blade 13
- Blade 14
- I/O Module 1
- I/O Module 2
- I/O Module 3
- I/O Module 4
- I/O Module 5
- I/O Module 6
- I/O Module 7
- I/O Module 8
- I/O Module 9
- I/O Module 10

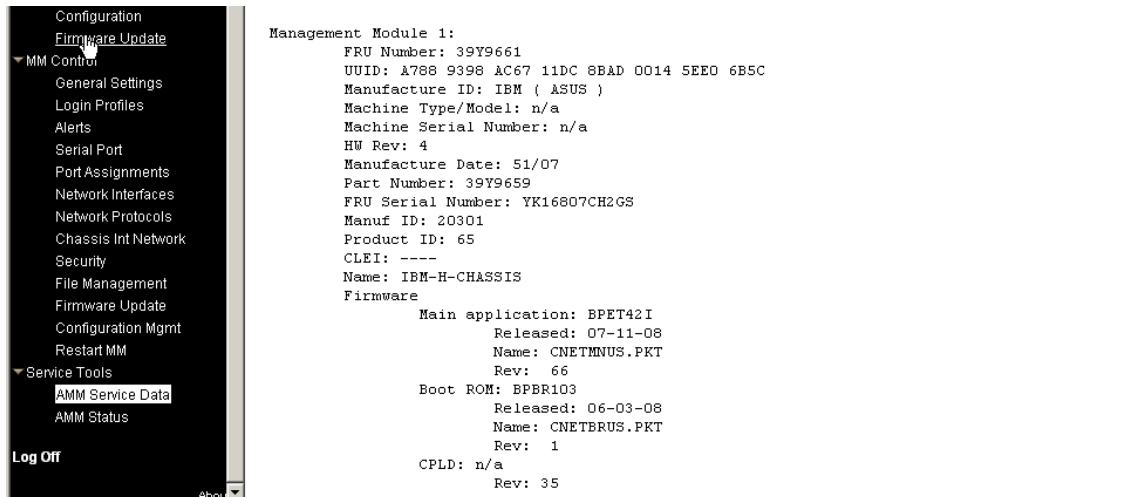


The diagram shows two vertical lists. The left list, titled 'Unassigned', is currently empty. The right list, titled 'Assigned', contains 24 items. Between the two lists are two buttons: a right-pointing arrow (>>) and a left-pointing arrow (<<).

Under **Network Protocols**, ensure that **SSH Server** is Enabled. SSH will be used to access the command line interface to control blade chassis operations

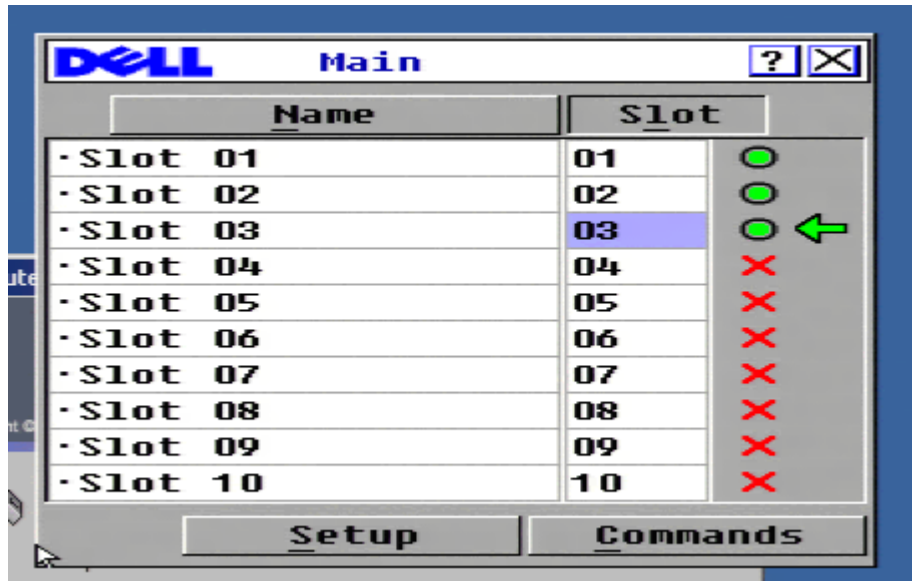


The Administrative Management Module firmware version can be verified by accessing **Service Tools > AMM Service Data**.



Dell 1855/1955 Analog KVM Module

- From the Standard KVM Port invoke the **Main** menu using the current hot-key sequence. This may be set up to use any or all of the following:
 - Scroll Lock + Left Alt + Scroll Lock + Slot Number
 - Scroll Lock + Shift + Scroll Lock + Slot Number
 - PrintScr + Slot Number
 - Ctrl + Ctrl + Slot Number



Select the **Setup** button to see this screen:



Select **Menu** and then **Display/Sort Key** by **Slot**.

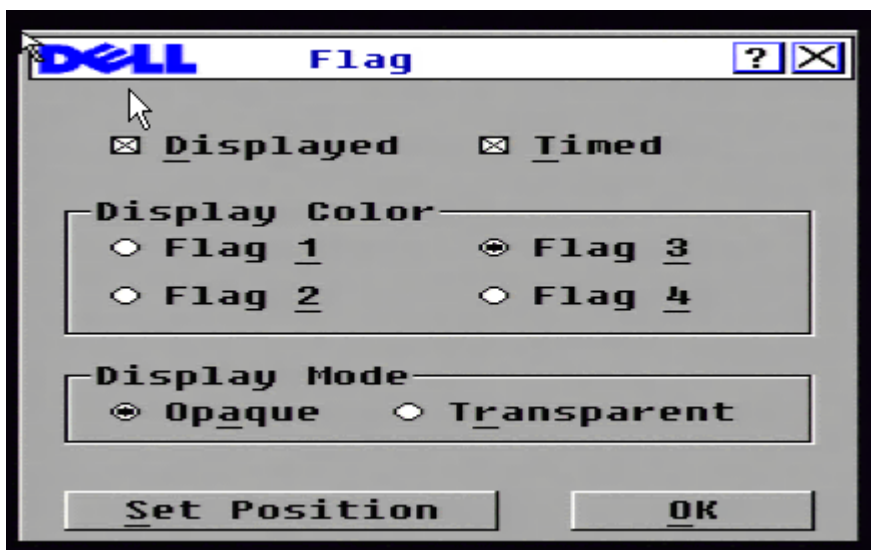
Set a **Screen Delay Time** - the time delay before the OSCAR menu is displayed after it is invoked. Recommend a value of 8 seconds.

If the hot-key sequence can be sent and executed within this timeframe, the OSCAR menu won't be seen when switching.

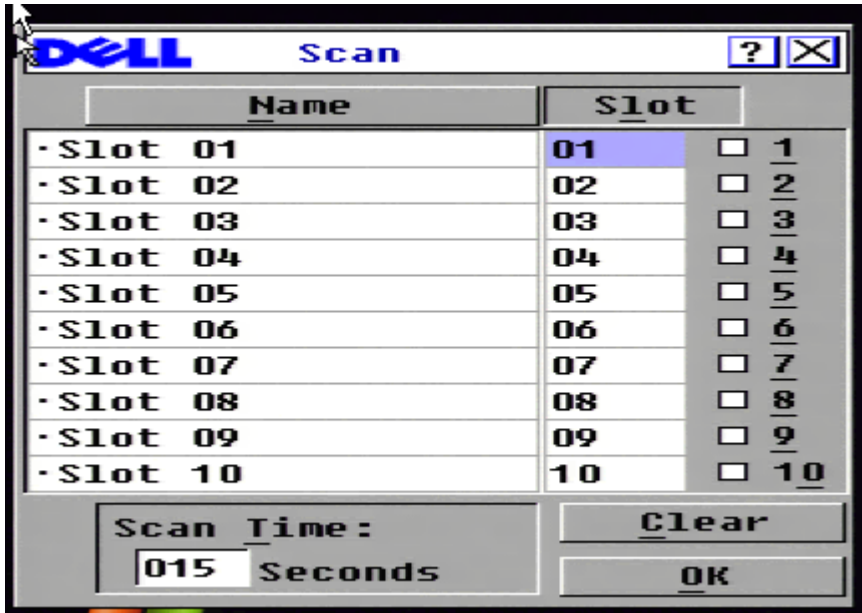


From the **Setup** menu, click on **Flag** to configure the Flag's behavior.

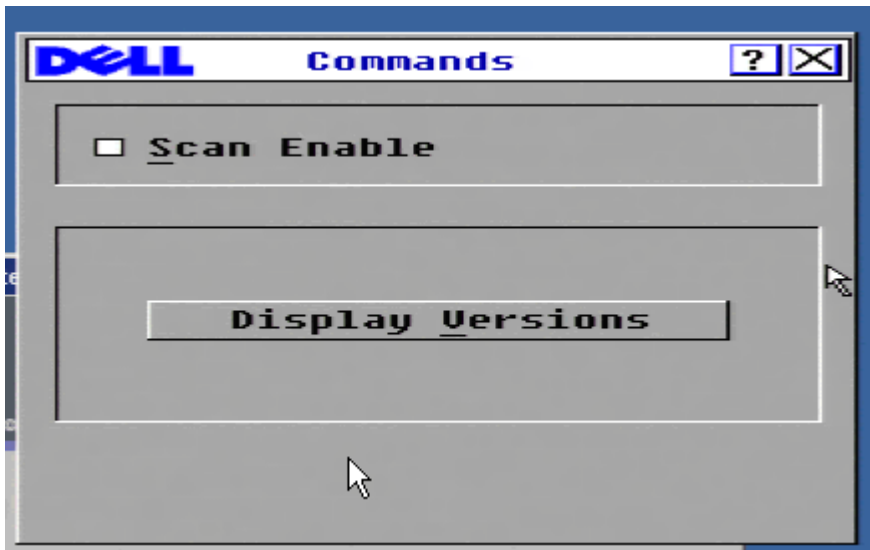
The flag serves as a visual confirmation of the slot you have connected to. Recommend to select **Displayed** and **Timed** so the flag is shown when first connected. This disappears after the **Screen Delay Time** specified earlier.



Return to the **Setup** menu, click on **Scan** to ensure that no slots are to be scanned.



From the **Main** screen, select **Commands** and make sure **Scan Enable** is NOT enabled.



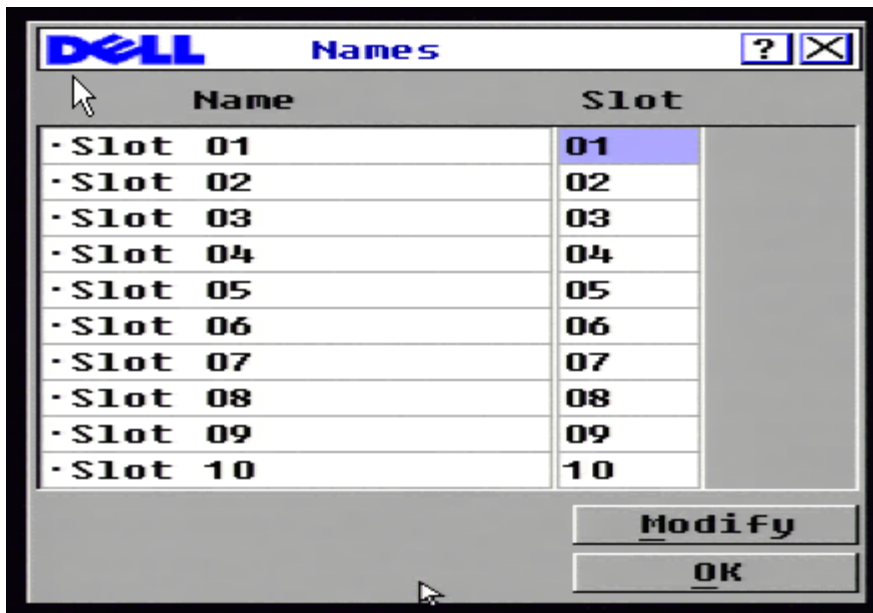
Return to the **Setup** screen and select **Security**. The **Enable Screen Saver** must be disabled and no password provided.



If you forget to disable the screensaver and password you'll encounter the following:

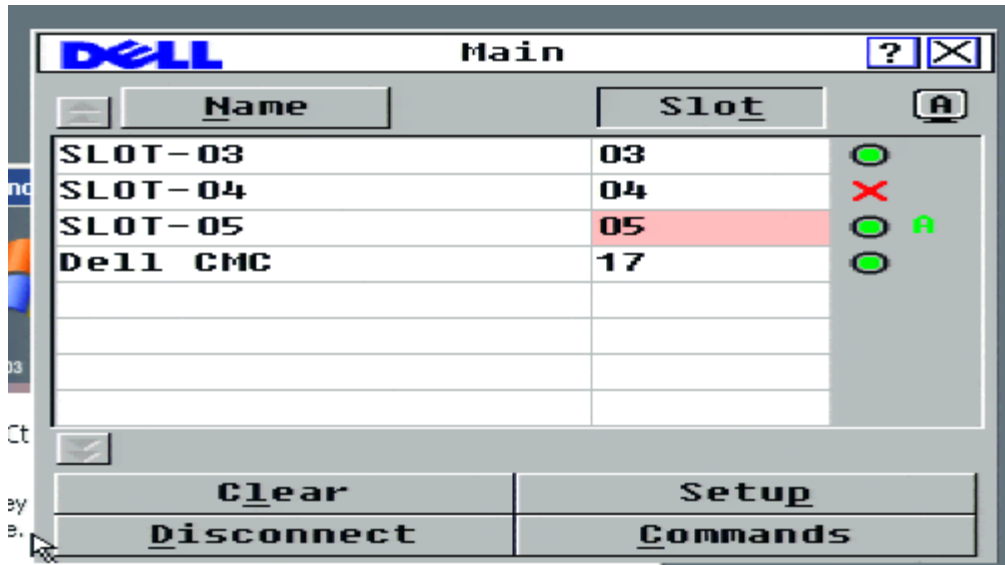


From the **Setup** screen, **Names** can be edited but these are not used with the KX II.



Dell M1000e with iKVM Module

From the standard KVM Port, invoke the **Main** screen using the configured hot-key sequence. This may be set up to use : PrintScreen, Alt-Alt, Ctrl-Ctrl, and/or Shift-Shift.



Select **Setup** to see the following screen:



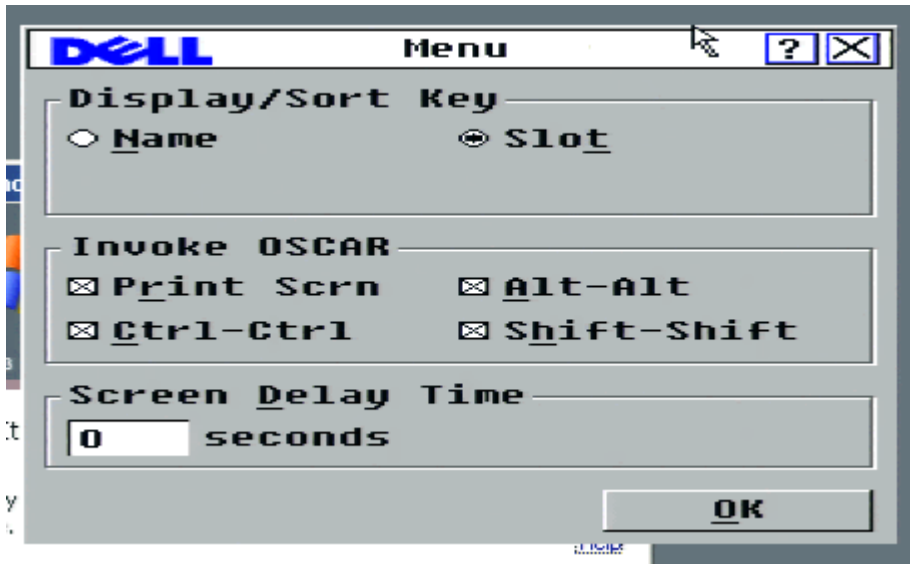
Select the **Menu** button.

Select **Display/Sort Key** by **Slot**

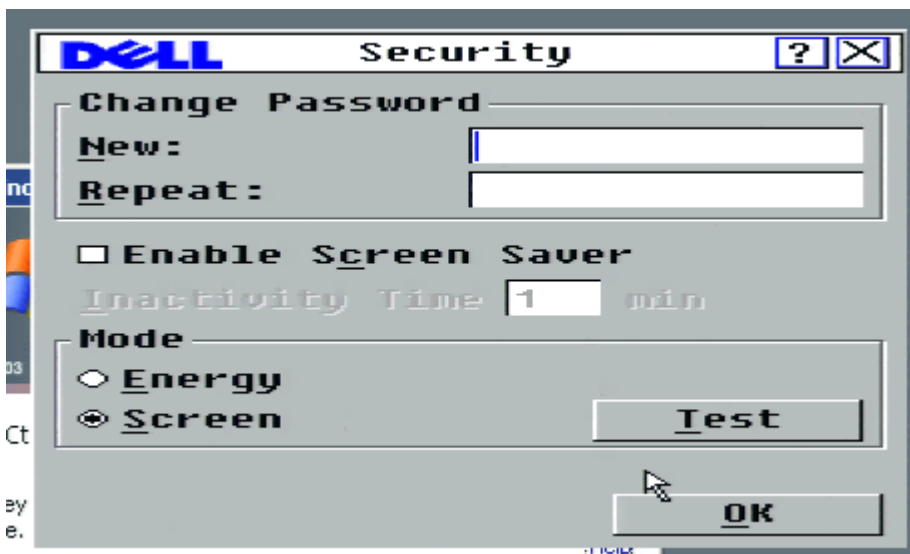
Designate 1 of 4 possible hot-key sequences to invoke OSCAR (the Port Configuration Page must match the hot-key selection made here).

Set a **Screen Delay Time** - the time delay before the OSCAR menu is displayed after it is invoked. Recommend a value of 8 seconds.

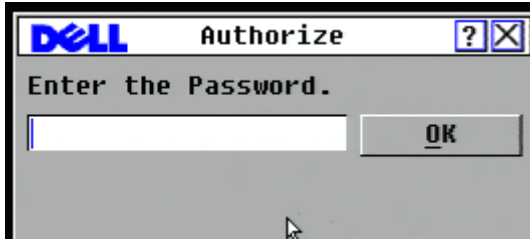
If the hot-key sequence can be sent and executed within this time, the OSCAR menu won't be seen when switching.



Return to the **Setup** screen and click **Security**. The **Enable Screen Saver** must be disabled and no password provided.



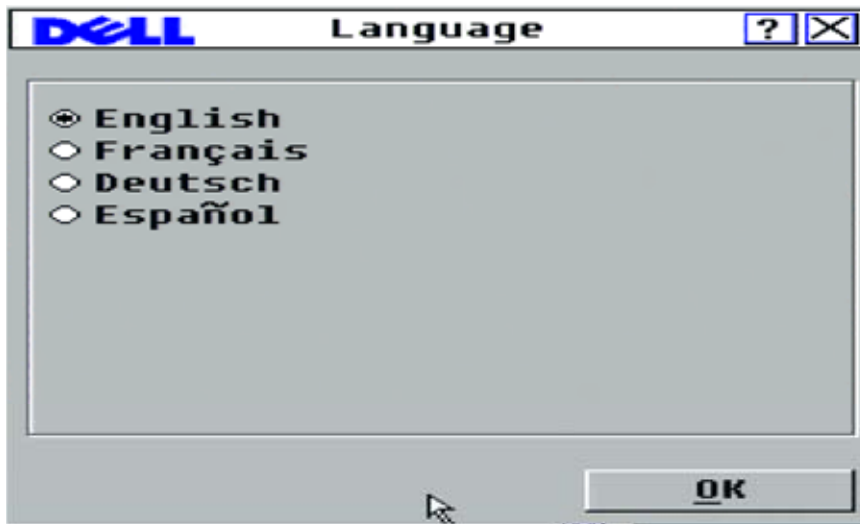
If you forget to disable the screensaver and password you'll encounter the following:



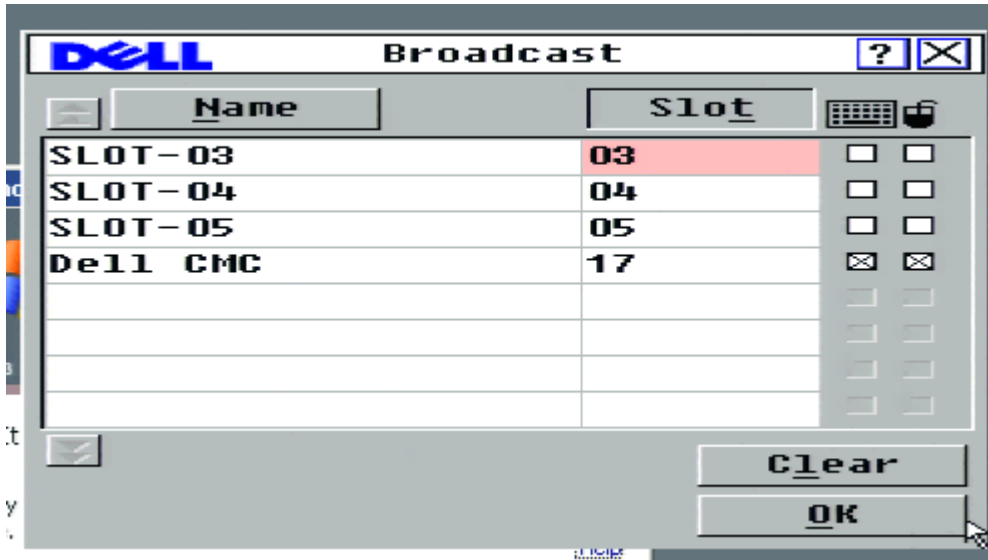
Return to the **Setup** screen and select **Flag**. The flag serves as a visual confirmation of the slot you have been connected to. Check **Displayed** and **Timed** so the flag is shown when first connected and disappears after the delay interval (the 8 seconds specified earlier).



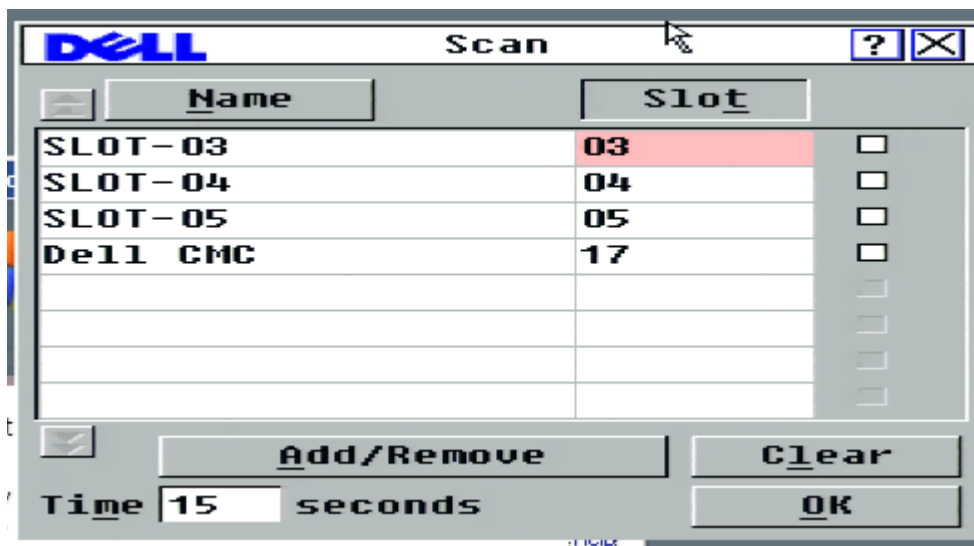
Return to the **Setup** screen and select **Language**, select **English**.



Return to the **Setup** screen and select **Broadcast**, ensure no slots are designated for broadcast.

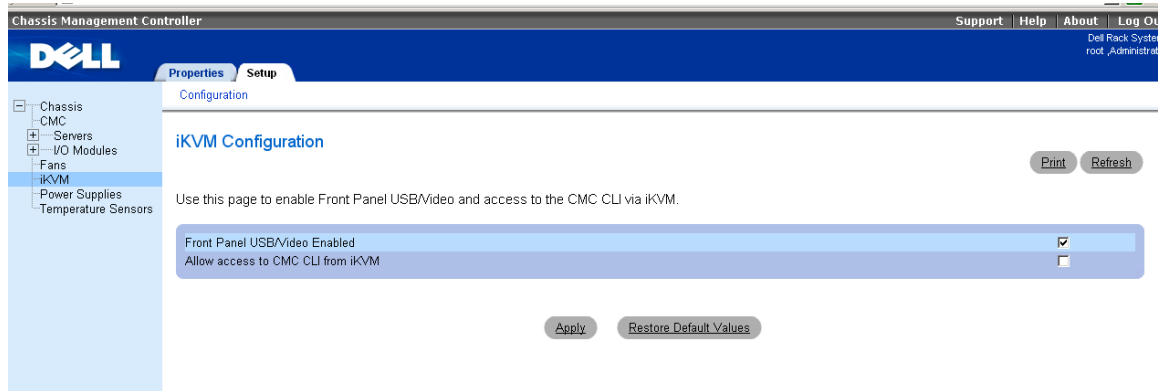


Return to the **Setup** screen and select **Scan**, ensure that no slots are designated for scan.



Setup for iKVM Module from the Chassis management Controller's (CMC) Administrative GUI, need to:

- Ensure that **Front Panel USB Video** is NOT enabled. The Front Panel has priority over the connections at the rear, so any connections at the front will prevent proper operation.
- Ensure that **Allow access to CMC CLI from iKVM** is NOT enabled



If the **Front Panel USB/Video** is enabled, you'll see a message indicating contention between the Front Panel and Rear Panel Access:



Dominion KX II Blade Server Configuration Guide

July 9, 2009

This note is intended for Raritan customers only; its use, in whole or part, for any other purpose without the express written permission from Raritan Computer, Inc. is prohibited.

Copyright ©2009 Raritan Computer, Inc. CommandCenter, Dominion, and the Raritan company logo are trademarks or registered trademarks of Raritan, Inc. All rights reserved. All other marks are the property of their respective owners.



Free Manuals Download Website

<http://myh66.com>

<http://usermanuals.us>

<http://www.somanuals.com>

<http://www.4manuals.cc>

<http://www.manual-lib.com>

<http://www.404manual.com>

<http://www.luxmanual.com>

<http://aubethermostatmanual.com>

Golf course search by state

<http://golfingnear.com>

Email search by domain

<http://emailbydomain.com>

Auto manuals search

<http://auto.somanuals.com>

TV manuals search

<http://tv.somanuals.com>