

# HOT WATER STORAGE TANKS

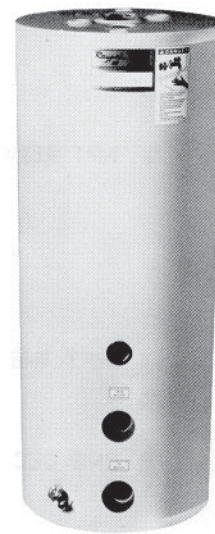
## NON-CODE 80 AND 115 GALLONS

### APPLICATION

The tank can be installed whenever the demand utilizes stored water from 80 to 115 gallons or more. Whether installed individually or as several tanks in parallel, this tank can provide 80% draw without an appreciable temperature decrease in single temperature application.

### FEATURES

- Available in 80 and 115 gallon sizes
- 150 PSI maximum working pressure
- Two magnesium anodes
- Meets ASHRAE 90.1
- Los Angeles City approval application no. M-880057
- Insulated and jacketed
- R-16 value insulation
- Foam insulation
- Five-year limited warranty
- Labels for each opening
- Large drain valve



80 gallon tank illustrated

### CONSTRUCTION CODE

- Storage Tank - The tanks are lined with a double coating of a high-temperature glass formula. It is built for long life under any water conditions. Two magnesium anode rods are factory installed.
- R-Foam Insulation - Rigid polyurethane foam insulation for improved economy and fuel savings. The insulation is R-16 value and complies to ASHRAE 90.1.
- Steel Jacket - Complete unit is enclosed in baked enamel steel jacket. With minimum care, the jacket will remain attractive and colorful for years.
- Tank Openings - Circulating tank connections and hot water outlets are 2" NPT. Other openings are for T and P valve, tankstat, thermometer and drain port. (3/4" NPT Drain valve standard)
- Labels - Openings are individually labeled for easy identification.

### SAMPLE SPECIFICATION

The hot water storage tank shall be a Raypak \_\_\_\_\_ gallon factory insulated and jacketed tank.

The tank shall have a double coating of a high temperature glass lining and be equipped with two (2) magnesium anode rods. The tank shall be constructed and designed for 150 PSI working pressure.

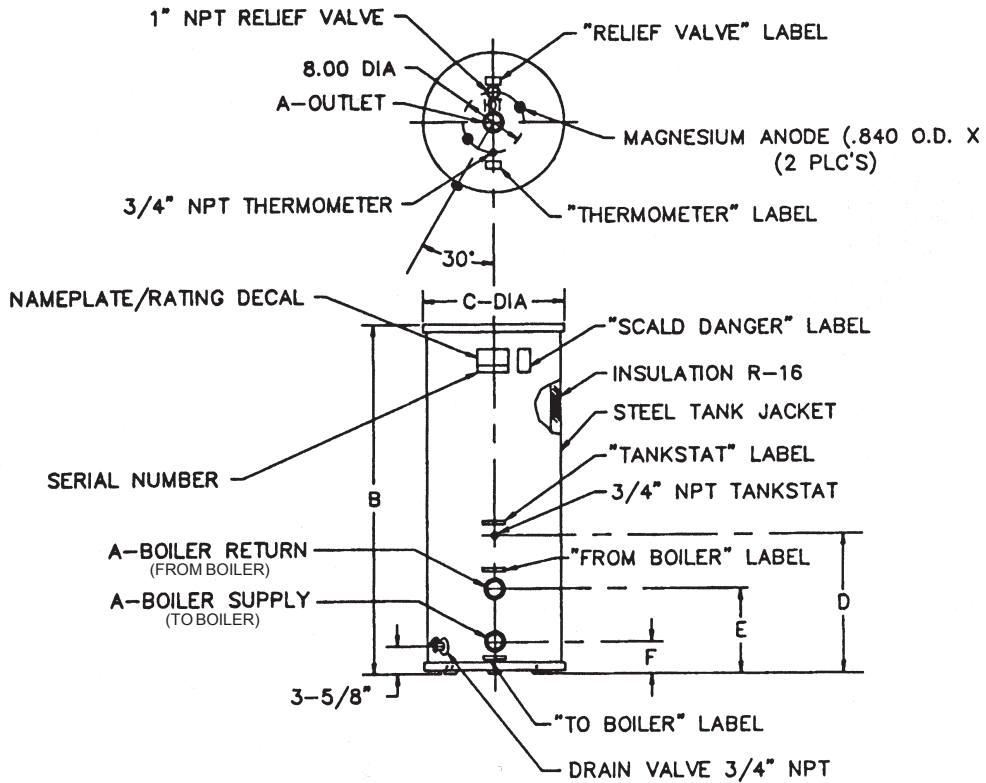
The tanks shall be insulated with rigid polyurethane foam that completely surrounds the tank and shall be enclosed in a baked enamel steel jacket. The tank insulation must be R-16 value and must meet or exceed ASHRAE standard 90.1. The tank shall be covered by a five (5) year limited warranty against corrosion.

**Raypak**<sup>®</sup>  
A Rheem<sup>®</sup> Company

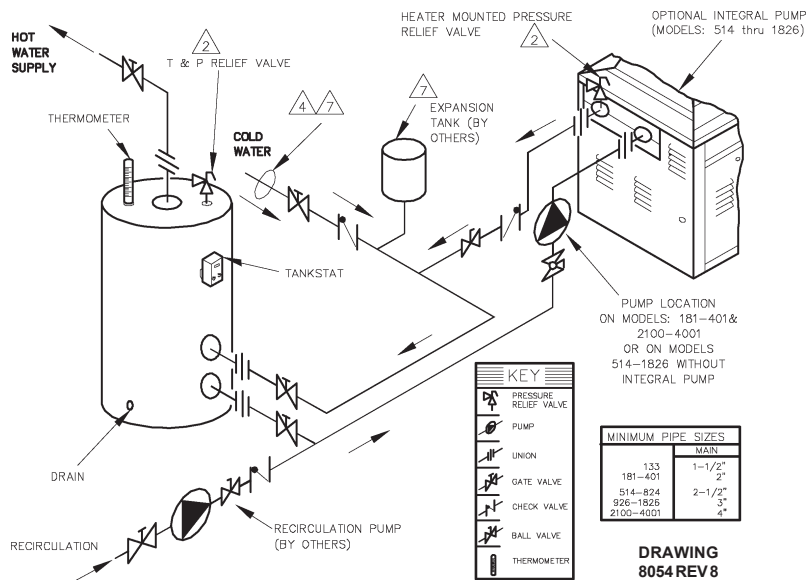
# NON-CODE TANKS (80 and 115 Gallons)

## TANK SPECIFICATIONS & DIMENSIONS

| PART NO. | CAPACITY GALLONS | A      | B      | C       | D       | E       | F      | H    | APPROX. SHIPPING WT.(LBS) |
|----------|------------------|--------|--------|---------|---------|---------|--------|------|---------------------------|
| 951117   | 80               | 2" NPT | 58-5/8 | 24-7/16 | 20-3/16 | 13-3/16 | 6-3/16 | 53.0 | 193                       |
| 950971   | 115              | 2" NPT | 59-1/4 | 28-1/4  | 18-1/16 | 11-1/16 | 4-3/16 | 53.0 | 336                       |



## TYPICAL PIPING



Raypak, Inc., 2151 Eastman Avenue, Oxnard, CA 93030 (805) 278-5300 • Fax (800) 872-9725  
Litho in U.S.A.

## Free Manuals Download Website

<http://myh66.com>

<http://usermanuals.us>

<http://www.somanuals.com>

<http://www.4manuals.cc>

<http://www.manual-lib.com>

<http://www.404manual.com>

<http://www.luxmanual.com>

<http://aubethermostatmanual.com>

Golf course search by state

<http://golfingnear.com>

Email search by domain

<http://emailbydomain.com>

Auto manuals search

<http://auto.somanuals.com>

TV manuals search

<http://tv.somanuals.com>