

Job: _____
Engineer: _____
Contractor: _____
Prepared By: _____ Date: _____

Power Vent

For Raytherm®
Models 2100-4001

Versatile

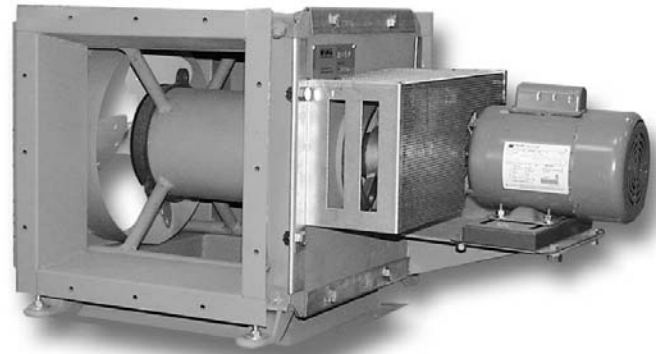
Suitable for use with hydronic heating boilers and hot water heaters

Permits sidewall venting

Allows use of smaller diameter vent pipe

Efficient

Maintains thermal efficiency of 82% on all appliance sizes



Features

- Induced draft
- Plenum sized for appliance capacity
- Pre-wired and shipped loose for field mounting
- Air flow proving switch, mounted and wired
- Fan motor relay, mounted and wired
- Heavy-duty galvanized steel cabinet
- Polytuf powder coat finish
- Indoor construction
- Easy installation
- Limited one-year warranty
- Shipped loose for field mounting

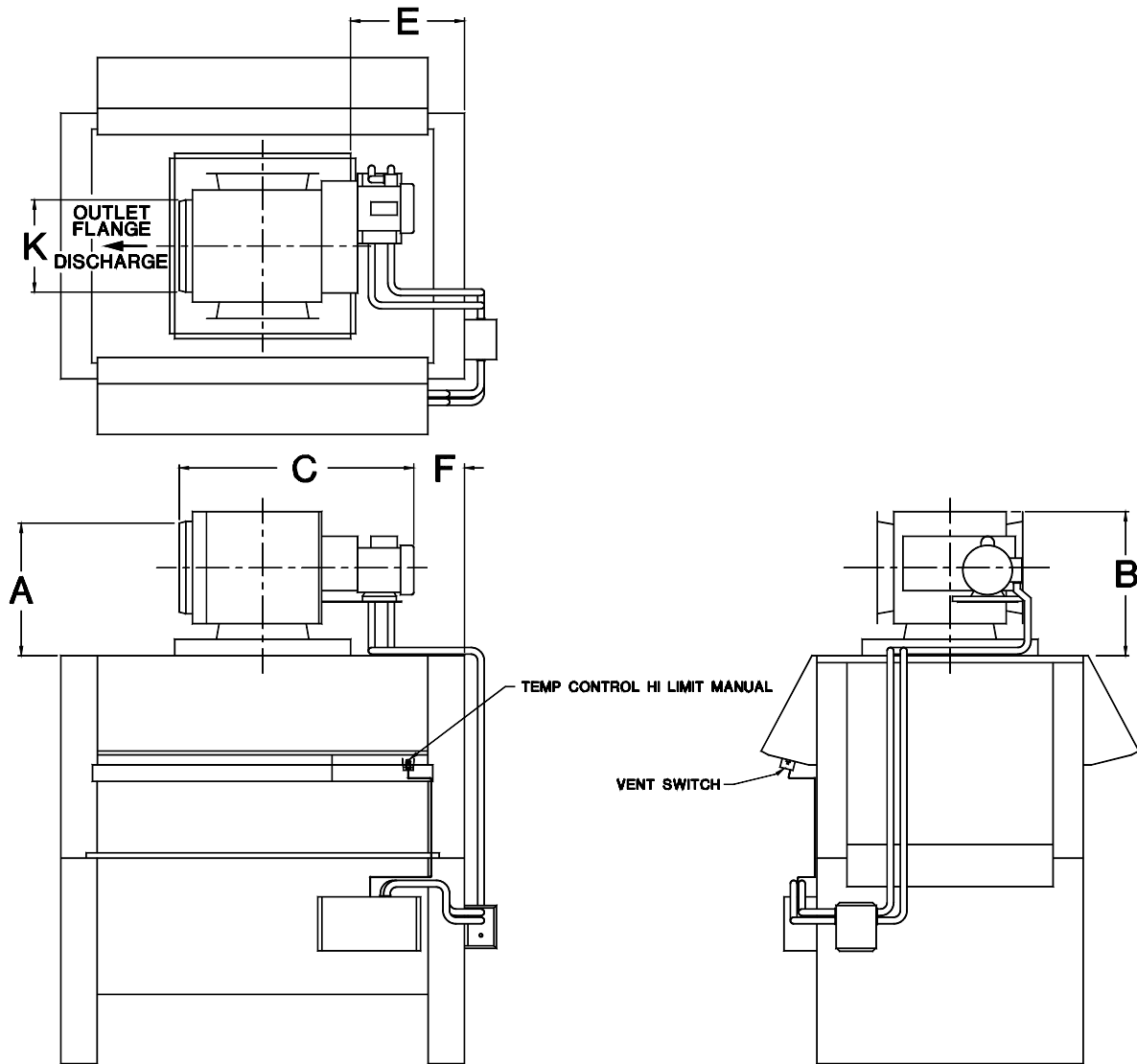


Raypak
A Rheem® Company

Power Vent

For Raytherm 2100 - 4001

Model _____



Raytherm Model	MBTU	Max. Runt (ft.)		Dimensions						Electrical Ratings			Max. CFM @ 70°F
		Vert.	Horiz.	A	B	C	E	F	K	Volts	Amps	HP	
2100	2100	20	60	16-7/8	22-3/8	33-1/2	17-1/4	7-11/16	14	115	7.2	1/2	1900
2500	2499	20	60	16-7/8	22-3/8	33-1/2	21-3/4	12-3/16	14	115	7.2	1/2	1900
3001	3000	20	60	24-1/4	27-3/8	44-3/4	23-5/8	10-1/8	16	115	10.7	3/4	3400
3500	3500	20	60	24-1/4	27-3/8	44-3/4	29-1/4	15-3/4	16	115	10.7	3/4	3400
4001	4000	20	60	24-1/4	27-3/8	44-3/4	34-7/8	21-3/8	18	115	10.7	3/4	3400

- Notes:
1. Vent pipe sizes are based on standard horizontal discharge with maximum sixty feet of horizontal length with no elbows, 300°F nominal flue temperature, and sea-level operation. (Allow 10 ft. equivalent length adjustment for each 90° elbow.) For installation under other conditions, please consult the factory.
 2. Left discharge is standard.
 3. Vent pipe must meet Category III appliance venting requirements.
 4. Follow installation instructions provided by power vent manufacturer.

Raypak, Inc. ▪ 2151 Eastman Avenue, Oxnard, CA 93030 ▪ (805) 278-5300 ▪ Fax (800) 872-9725 ▪ www.raypak.com

Free Manuals Download Website

<http://myh66.com>

<http://usermanuals.us>

<http://www.somanuals.com>

<http://www.4manuals.cc>

<http://www.manual-lib.com>

<http://www.404manual.com>

<http://www.luxmanual.com>

<http://aubethermostatmanual.com>

Golf course search by state

<http://golfingnear.com>

Email search by domain

<http://emailbydomain.com>

Auto manuals search

<http://auto.somanuals.com>

TV manuals search

<http://tv.somanuals.com>