

RCA
SCENIUM



Digital High-Definition Projection Television


65"

Diagonal Screen



HD65W20

RCA
SCENIUM

All Format ATCS Decoder Built In
All Format DIRECTV Receiver Built In
16:9
NTSC Up Conversion
1080i Display of High-Definition Signals
480p/540p Display of Standard-Definition Signals
3D Y/C Digital Frame Comb Filter
Resolution (1440 Horiz. x 1080 Vertical Lines)
High-Definition Optical System – Custom-Designed 5-Element Digital Lens System with Color Correction
Hi-Gain, Dark-Tint Screen
Digital (SPDIF) Audio Output (Optical)
SRS  Focus ¹
Sound Logic Audio Leveler
On-Screen Menu System and Program Guide
Backlit Universal Remote Control ²

Specifications

digital | **HDTV**

1 SRS, the symbol , Focus and Sound Retrieval System are registered trademarks of SRS Labs, Inc.

2 Controls the TV plus primary functions of most brands of VCRs, satellite systems, and cable boxes.

3 20 watts = 10 watts per channel, RMS rating into 8 ohms 50Hz-20,000Hz, ± 3db with less than 1% THD.

4 dbx is a registered trademark of Carillon Electronics Corporation.

5 Check your cable company's compatibility requirements.

6 Dolby Digital is a registered trademark of Dolby Laboratories Licensing Corp.

DIRECTV and the Cyclone Design logo are trademarks of DIRECTV, Inc., a unit of Hughes Electronics Corp., and are used with permission.

Picture

Optimum Contrast Screen	--- 65" 16 x 9
Picture Power (Watts)	----- 48
Custom Lens System	----- 5-Element
Screen Pitch	----- 0.52mm
Dynamic Focus	----- Yes
Scan Velocity Modulation	--- Yes
Comb Filter	----- 3D Y/C Frame Comb Filter
Auto Color Control	----- Color Level & Tint
INTELLIFOCUS™	
Auto Convergence	----- Yes
BlackStretch	----- Yes
Color Detail Enhancement	-- Yes
Wide Band Video Amplifier	- Yes
Video Resolution	----- 1440 Horiz. x 1080 Vert. Lines
NTSC Line Doubling (Up-Conversion)	----- 480i - 480p
Video Noise Reduction	----- 3-Modes
Calibrated Color Temp.	----- 6500 & 9300 Kelvin


Reception

ATSC	----- All Digital Formats VSB
NTSC	----- Standard
DIRECTV	----- All Formats (High Definition and Standard)

DIRECTV System Capability

Signal Reception	----- QPSK
HD System	----- 1280 H x 1080 V
Security	----- Smart Card
Return Path	----- Telco Modem

Sound

Audio Power (Watts) Total ³	-- 20 (10 watts/ch)
dbx ⁴ Broadcast Stereo	----- Yes
Second Audio Program (SAP)	- Yes
SRS  Sound Retrieval System ¹	----- Focus
Speaker System	----- 2 - 51mm and 5" x 7" High Compliance

Convenience

Advanced Twin Tuner™	
Picture-In-Picture	----- NTSC, PIP, Swap and Move
Format Control	----- 4:3 Centered, 4:3 Expanded, 16:9 Expanded
Channel Labeling	----- Yes
V-Chip Parental Control	----- Yes
Stereo Headphone Jack	----- 3.5mm Stereo Mini-Jack
Front A/V Input	----- Composite, L/R Audio
Universal Remote ²	----- Backlit

Back Panel Inputs/Outputs

A/V Inputs	----- 3 - S-Video/Composite
SYNCHROSCAN™ HD Component	----- YPrPb Video Input 480i - 480p - 1080i
Dual RF Antenna Inputs	----- 75-Ohm
Digital Audio Output	----- Optical Toslink
Audio Output Jacks	----- Fixed and Variable
External Speaker Terminals	-- Yes

User Adjustments (Adjustable Via On-Screen Menu)

Basic Adjustments	----- Contrast, Color, Tint, Black Level, Sharpness
Advanced Adjustments	----- Noise Filter, Color Temperature
Audio	----- Bass, Treble, Balance, Volume, Mute

General Specifications

Shipping Weight	----- 324.8 Lbs.
Dimensions (H x W x D)	----- 60½" x 60¼" x 28"
Finish	----- Scenium Silver



What is High-Definition Television (HDTV)?

For nearly 60 years, analog television has been the broadcast standard. This standard is now being replaced by digital television, which uses a continuous stream of computer-like numbers to transmit pictures, sound, and information.

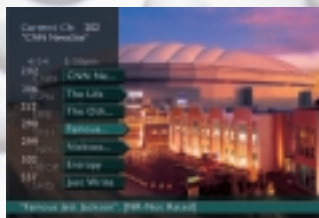
The computer numbers are translated into pixels. The higher the pixel number, the better the picture. HDTV can receive up to ten times as many pixels as today's TV—that's 2,000,000 pixels compared to 200,000. This RCA Scenium™ high-definition television offers a 16:9, 65" diagonal screen (similar to a movie screen) for a breathtaking, lifelike picture. The high-definition optical system provides rich, accurate color and pinpoint detail. Even today's programming will look better on RCA Scenium high-definition sets. That's because each set incorporates our latest in digital up-conversion technology to ensure the cleanest, most detailed picture possible from existing signals, regardless of the source.

SRS®/FOCUS

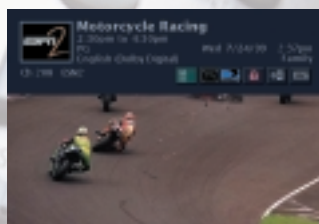
RCA
SCENIUM



Easy-To-Navigate
On-Screen
DIRECTV Menu System
Optional antenna dish required
to receive DIRECTV® programming.
(Dish and programming sold
separately).



SurfGuide™
The SurfGuide System brings up seven channels of programs at a time. Surf up and down the guide, viewing the current 30-minute or up to a two-hour time window of programming. You'll never miss out on any of the action of your current show, because it stays active in the background while you explore other channels.



Interactive Channel Banner
The translucent, see-through Interactive Channel Banner makes access to the key features of the System fast and easy. We've taken the most exciting features, created icons for each of them, and positioned them in the banner for direct access.



Information Guide
Lists five different channels of programming at a glance. Details on the current highlighted program are displayed in a banner at the top of the screen. Program information changes automatically as you navigate through the guide and highlight different programs.

The Picture

3D Y/C Digital Frame Comb Filter

The ultimate in color separation—this three-dimensional filter evaluates both current and future video information, eliminating dot and edge crawl, while providing for better transitions between scene changes—resulting in a dramatically enhanced picture.

SYNCROSCAN™

Component Video Inputs

Automatically adjust scan rate of component video inputs (YPrPb). Allow for connection of regular or progressive-scan DVD players or component-output HDTV set-top boxes.

Auto Color Control

Automatically maintains natural flesh tones and color fidelity from channel to channel and scene to scene.

Deluxe Shielded Tuner with 181-Channel Tuning Capability⁵ (NTSC)

Special shielding dramatically reduces ghosting caused from off-air pick-up when watching cable channels.

Digitally-controlled frequency synthesis tuning system “locks on” to cable and standard signals with unsurpassed accuracy.

Dynamic BlackStretch Circuitry

Extends black levels in bright scenes to enhance contrast and detail.

Hi-Gain Dark-Tint Screen

New screen design improves brightness while utilizing dark-tint double lenticular and fresnel levels to enhance picture contrast with blacker blacks, brilliant whites, and deep rich colors.

High-Performance Scan Velocity Modulation (SVM)

Improved SVM circuitry automatically varies the scanning speed of the picture tube's electron beam to improve sharpness and detail, especially in high-contrast areas.

Custom-Designed 5-Element Lens System with Color Correction

Provides a brighter picture than 4-Element Lens System with improved corner focus and overall video resolution. An integrated thermal focus control ensures accurate pinpoint focus by eliminating heat-related lens movement.

Wide Band Video Amplifier

Delivers high resolution and clarity by extending the video frequency response. Optimizes performance from high-resolution sources such as satellite systems, DVD players, and S-Video signals (S-VHS, Hi8).

The Sound

Broadcast Stereo with dbx⁴ Noise Reduction

Improves the clarity and fidelity of stereo broadcasts by restoring dynamic range and suppressing unwanted noise.

Digital Optical Coupling

A serial digital audio connector used primarily to connect a digital audio stream with an external amplifier.

Sound Logic™ Audio Leveler

When turned on, eliminates the annoying “blast” of sound during commercial breaks.

SRS™ Focus' Audio Technology

Ingenious new technology from SRS™ Labs. Raises the sound stage to ear level providing more lifelike audio. Combined with SRS' 3D Sound, it creates a fully immersive “live performance.”

Second Audio Program (SAP)

Decodes the second audio program available on some broadcasts.

The Convenience

Advanced Auto Channel Search

Auto Cable/Air Switch sets tuner to cable or “off-air” frequencies during initial setup. Then system automatically scans for and locks active channels into channel memory.

Advanced Twin Tuner™ Picture-In-Picture (NTSC Only)

Two built-in independent tuning systems allow both large-picture and small-picture viewing without the need for a second external video source (e.g. VCR). In addition to standard PIP feature of Swap, the Twin Tuner™ PIP System also provides Continuous Move and Commercial Skip-to-PIP.

Channel Labeling

Assign on-screen characters to easily identify channels (e.g. NBC, HBO, ESPN, VH-1).

Format Control

- 4:3 Centered (positions analog broadcast picture in center of screen)
- 4:3 Expanded (horizontally stretches 4:3 image to fill 16:9 screen)
- 16:9 Expanded (helps letterboxed material fill 16:9 screen)

On-Screen Menu System

On-screen displays make it easy to adjust more picture, sound, and convenience features from either the remote control or the TV front panel buttons.

Picture Reset

Instantly returns picture to factory settings for Color, Tint, Contrast, Brightness, and Sharpness.

INTELLIFOCUS™ Auto Convergence

Menu-accessible feature automatically optimizes convergence for the sharpest picture possible.

V-Chip Parental Control

Puts control back into the hands of the viewer by blocking unwanted television broadcasts with U.S. Government required circuitry. Blocks three types of programs: regular television programs, broadcast movies and unrated programs.

The Remote

Universal Backlit Remote² CRK76BAL1

With the touch of an extraordinary remote, you'll be able to scroll through some of the most simple-to-use, yet technologically advanced, menu screens ever offered, including on-screen displays that can be controlled by the touch of a button.



The Connections

Five Sets of Audio/Video Inputs!

- 3 A/V composite inputs each with auto-detectable S-Video input.
- 1 set SYNCROSCAN™ HD component video inputs (YPrPb) allows for connection of regular-or progressive-scan DVD players or component-output cable boxes.
- 1 set audio/video inputs located on front panel.

Audio/Video Outputs

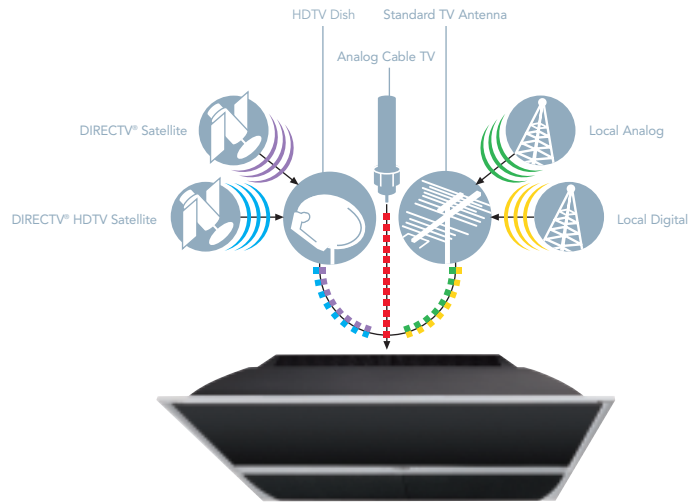
- 1 pair fixed audio outputs (provides constant level output for recording or for stereo system with its own remote).
- 1 pair variable audio outputs (the output audio level changes with TV's remote).
- 1 set of speaker jacks for external speakers.

Auxiliary Jack Panel

- 3 RF inputs (one satellite, two NTSC/ATSC).
- Dolby Digital[®] output (for optical cable, 5.1, etc.).
- Access Card Reader holds the Satellite Authorization Card which allows access to satellite programming.
- Phone Jack Connector allows a phone line connection for automatic access and communication between the satellite access card and the programming provider.

The Limited Warranty

- One year for labor charges.
- One year for parts.
- Two years for picture tube.
- See RCA Scenium dealer for complete details.



The Built-In Advantage.

The RCA Scenium™ HDTV with its multi-platform capability delivers the full promise of digital quality. There is an all-format ATSC digital tuner built in, for viewing local digital and high-definition broadcasts. In addition, there is an integrated DIRECTV receiver that gives you access to over 225 channels of DIRECTV® programming (programming sold separately; dish required and sold separately). Now you can enjoy an unbeatable lineup of movies, sports, family entertainment, music, news and information, along with unsurpassed picture quality and sound. The experience is truly extraordinary.

RCA SCENIUM
rcascenium.com

Form S-HD65W20

©2001 Thomson multimedia Inc. Trademark(s) ® Registered Marca(s) Registrada(s)
Photos and features subject to change without notice. Illustration of product finish may vary from actual color.
Screen sizes measured diagonally. Printed in the U.S.A. 3/01 PC15939



Free Manuals Download Website

<http://myh66.com>

<http://usermanuals.us>

<http://www.somanuals.com>

<http://www.4manuals.cc>

<http://www.manual-lib.com>

<http://www.404manual.com>

<http://www.luxmanual.com>

<http://aubethermostatmanual.com>

Golf course search by state

<http://golfingnear.com>

Email search by domain

<http://emailbydomain.com>

Auto manuals search

<http://auto.somanuals.com>

TV manuals search

<http://tv.somanuals.com>