

FCC Information English

This device complies with Part 15 of the FCC Rules. Operation is subject to the following two conditions: (1) This device may not cause harmful interference, and (2) this device must accept any interference received, including interference that may cause undesired operation.

In accordance with FCC requirements, changes or modifications not expressly approved by Thomson Inc. could void the user's authority to operate this product.

This device generates and uses radio frequency (RF) energy, and if not installed and used properly, this equipment may cause interference to radio and television reception. If this equipment does cause interference to radio or television reception (which you can determine by turning the equipment off and on), try to correct the interference by one or more of the following measures:

- Reorient the receiving antenna (that is, the antenna for the radio or television that is "receiving" the interference).
- Move the unit away from the equipment that is receiving interference.
- Plug the unit into a different wall outlet so that the unit and the equipment receiving interference are on different branch circuits.

If these measures do not eliminate the interference, please consult your dealer or an experienced radio/television technician for additional suggestions.

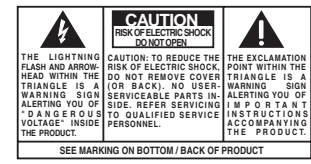
For Your Safety

The AC power plug is polarized (one blade is wider than the other) and only fits into AC power outlets one way. If the plug won't go into the outlet completely, turn the plug over and try to insert it the other way. If it still won't fit, contact a qualified electrician to change the outlet, or use a different one. **Do not attempt to bypass this safety feature.**

CAUTION: TO PREVENT ELECTRIC SHOCK, MATCH WIDE BLADE OF PLUG TO WIDE SLOT, FULLY INSERT.

Have a Blast! Not in your eardrums! Make sure you turn down the volume on the unit before you put on headphones. Increase the volume to the desired level only after headphone are in place.

Also, the Federal Communications Commission has prepared a helpful booklet, "How To Identify and Resolve Radio TV Interference Problems." This booklet is available from the U.S. Government Printing Office, Washington, D.C. 20402. Please specify stock number 004-000-00345-4 when ordering copies. This product complies with DHS Rules 21 CFR Subchapter I. Applicable at the date of manufacture.



WARNING: TO PREVENT FIRE OR ELECTRICAL SHOCK HAZARD, DO NOT EXPOSE THIS PRODUCT TO RAIN OR MOISTURE.

Safety Information

Technical Information

Product: Audio System
Brand: RCA
Model: RS2046

Electrical Consumption

Power Supply: 120V ~ 60Hz
Power Consumption: 22 Watts

IMPORTER
Comercializadora Thomson de México, S.A. de C.V.
Alvaro Obregón No. 151, Piso 13.
Col. Roma. Delegación Cuauhtémoc.
C.P. 06700, México, D.F.
Teléfono: 52-55-11-020360
RFC: CTM-980723-K55

For Your Records

In the event that service should be required, you need the model number. In the space below, record the date and place of purchase:
Model No. _____
Date of Purchase _____
Place of Purchase _____

Service Information

This product should be serviced only by those specially trained in appropriate servicing techniques. For instructions on how to obtain service, refer to the warranty included in this Guide.

Safety Precautions

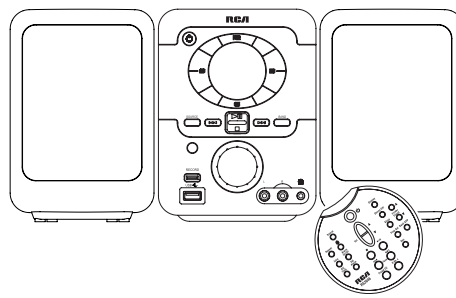
- Never open the cabinet under any circumstances. Any repairs or internal adjustments should be made only by a trained technician.
- Never operate this product with the cabinet removed.
- Do not use your system immediately after transporting it from a cold place to a warm place, as condensation may cause the system to malfunction.
- Keep your unit away from humid areas and abnormally hot places.
- Do not touch the player with wet hands. If any liquid enters the player cabinet, take the player to a trained technician for inspection.
- This compact disc player uses a laser to read the music on the disc. The laser mechanism responds to the cartridge and stylus of a record player. Although this product incorporates a laser pick-up lens, it is completely safe when operated according to directions.
- Discs rotate at high speed inside the player. Do not use damaged, warped, or cracked discs.
- Do not touch the pick-up lens which is located inside the disc compartment. To keep dust from collecting on the pick-up lens, do not leave the compartment door open for an extended period of time. If the lens becomes dirty, clean it with a soft brush, or use an air blower brush designed for camera lenses.
- The apparatus shall not be exposed to dripping and splashing and that no objects filled with liquids, such as vases, shall be placed on apparatus.
- Main plug is used as the disconnect device, it shall remain operable and should not be obstructed during intended use. To be completely disconnected the apparatus from supply mains, the main plug of the apparatus shall be disconnected from the mains socket outlet completely.

IMPORTADOR
Comercializadora Thomson de México, S.A. de C.V.
Alvaro Obregón No. 151, Piso 13.
Col. Roma. Delegación Cuauhtémoc.
C.P. 06700, México, D.F.
Teléfono: 52-55-11-020360
RFC: CTM-980723-K55

EXPORTER
Thomson Inc.
P.O. Box 1976
Indianapolis, IN 46206 - 1976
©2006 Thomson Inc.
Trademark(s) ® Registered
Marca(s) ® Depositada(s)
Marca(s) ® Registrada(s)
www.rca.com
Printed in China / Impreso en China

5629 1490 (EN/F)

RCA user manual



EN/F RS2046

It is important to read this instruction book prior to using your new product for the first time.

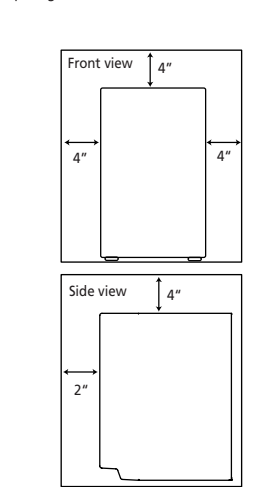
Before You Begin

Unpacking Your System

- You should have:
- One main unit (with 2 speakers);
 - One remote control;
 - One AM loop antenna;
 - One user's guide;
 - One safety leaflet;
 - Owner registration card.

Installation

To ensure sufficient ventilation, keep the spacing shown as below:

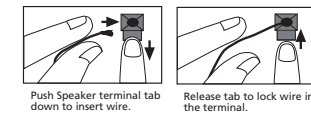


Connecting the Speakers

The speaker connection jacks are located on the back of the unit.

When connecting the speakers, match the red wires to the red jacks and the black wires to the black jacks.

Speaker Wire Connection



NOTE: Make sure the insulation is completely removed from the exposed conductive parts.

Using the Antenna

Before you use your audio system, you'll want to make sure the FM antenna is positioned properly. The FM antenna is the coiled wire connected to the back of the unit. Uncoil it, making sure it is fully extended (you may even want to tape it to the wall behind the unit, if possible. The higher, the better). You'll also need to connect the AM antenna loop to the back of the unit if you listen to AM stations. Rotate the AM loop antenna for better reception.

General Controls

Refer to the actual unit or remote control while you are reading below descriptions.

Front View

- Turns on/off the unit.
- Adjusts volume.
- Stops playback.
- Starts and pauses playback.
- Skips backward or forward track/file; searches down or up radio frequency.
- Presets EQ - Selects EQ effects.
- Skips backward or forward track/file; searches down or up radio frequency.
- Starts and pauses playback.
- Stops playback.
- Stops radio band.
- Starts recording from CD / tuner to USB.
- For insertion of USB device.
- Adjusts volume.
- Removes the cover and insert external audio cables to L (left channel cable) and R (right channel cable).
- Removes AUX INPUT cover for insertion of headphones.

Top View

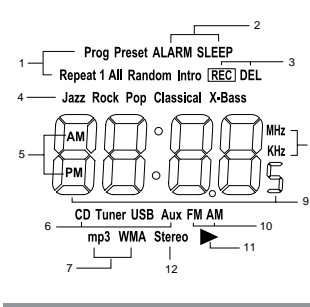
- Press to open the CD compartment door. Push the door downward to close it.
- Switch on to check alarm time, press and hold to stop or off alarm function.
- Press once to select analogue or digital clock display. Press and hold to activate or deactivate dimmer function.
- Adjusts clock and timer. Press and hold to change display background colours.

Remote Control

- Turns on/off the unit.
- Adjusts volume.
- Stops playback.
- Starts and pauses playback.
- Skips backward or forward track/file; searches down or up radio frequency.
- Presets EQ - Selects EQ effects.
- Skips backward or forward track/file; searches down or up radio frequency.
- Starts and pauses playback.
- Stops playback.
- Stops radio band.
- Starts recording from CD / tuner to USB.
- For insertion of USB device.
- Adjusts volume.
- Removes the cover and insert external audio cables to L (left channel cable) and R (right channel cable).
- Removes AUX INPUT cover for insertion of headphones.

The remote control must be inserted with "2 AAA" or "LR03" batteries prior use.

Display



- Playback modes
- Record functions
- EQ and bass effects
- AM or FM time
- Sound sources
- File formats
- Radio frequency units
- Digital clock time, track or file number, elapsed playback time
- Radio bands
- Playback in progress
- FM stereo

Clock and Timer

Setting Clock

- Press **DISPLAY** and **ADJUST** together (or **Time Adj**) on the remote control to enter clock setting mode. Clock time shows with hour digits flashing on the display.
- Press **▲** or **▼** to set the hour.
- Press **ADJUST** (or **Adj Time**) on the remote control to shift to the minute digits.
- Press **▲** or **▼** to set the minute.
- Press **ADJUST** (or **Adj Time**) on the remote control to confirm the setting.

Setting Timer

- Press **ALARM** and **ADJUST** together (or **Adj Alarm**) on the remote control to enter timer setting mode. Timer on time shows with hour digits flashing on the display.
- Press **▲** or **▼** to set the hour.

Clock and Timer

Activating the Timer

Press and hold **ALARM** (or **Alarm On/Off**) on the remote control on the main unit to activate and deactivate the timer function. "ALARM" shows on the display when activated. Timer cannot be set or activated if clock time is not set. Follow instructions under "Setting Clock" to set clock.

Sleep Function

You can select the time interval in minutes before the unit turns off automatically.

- Press **Sleep** on the remote control to select among OFF, 90, 80, 70, 60, 50, 40, 30, 20, and 10 minutes. "SLEEP" icon flashes on the display when activated.
- When sleep is activated, press **Sleep** once to view remaining sleep time in minutes.
- Press **Sleep** again when the remaining sleep time is displayed to change sleep time.

Analogue and Digital Clock Display

Two clock display modes are available: analogue and digital. Press **DISPLAY** to switch between the two display modes. At the center of the analogue clock, "P" stands for PM time, "A" stands for AM time.



Note: Sleep is automatically deactivated when the unit is turned off.

Special Features

Preset Equalizer Curves

Press **Preset EQ** on the remote control to toggle among FLAT, JAZZ, ROCK, POP and CLASSICAL. The selection is highlighted on the display.

Changing Display Brightness

Press and hold **DISPLAY** on the top of the unit to change the brightness level of the display.

Changing Display Colors

Press and hold **ADJUST** on the top of the unit to change the display colors.

Quick Start

Refer to the following for basic playback and radio listening. For detailed operations and more advanced features, please refer to relevant sections.

Listening to CD/mp3/WMA Discs

- Press **⏻** to switch on the unit.
- Press **SOURCE** to select USB mode.
- Insert a USB device to the USB jack on the front of the unit.
- Wait while the unit reads and counts the total number of songs on the disc.
- Press **SOURCE** to select CD or WMA files, "no" flashes on the display.
- Press **▶** to start playback. Press again to pause playback. Press again to resume.
- If the song is a mp3 or WMA file, the mp3 or WMA icon lights on the display.
- During playback, elapsed playback time and current track number show on the display alternately.
- Press **▶** or **▶▶** to select previous or next track / file. Press and hold to search through the disc while it is playing.
- Press **■** to stop playback.

Listening to mp3/WMA files on a USB Device

- Press **⏻** to switch on the unit.
- Press **SOURCE** to select USB mode.
- Insert a USB device to the USB jack on the front of the unit.
- Wait while the unit reads and counts the total number of songs on the disc.
- Press **SOURCE** to select mp3 or WMA files, "no" flashes on the display.
- Press **▶** to start playback. Press again to pause playback. Press again to resume.
- If the song is a mp3 or WMA file, the mp3 or WMA icon lights on the display.
- During playback, elapsed playback time and current track number show on the display alternately.
- Press **▶** or **▶▶** to select previous or next track / file. Press and hold to search through the file while it is playing.
- Press **■** to stop playback.

Listening to Radio

- Press **⏻** to switch on the unit.
- Press **SOURCE** to select TUNER mode.
- Press **BAND** (or **Band-APP**) on the remote control to select radio band.
- Press **▲** or **▼** to tune down or up radio frequency. Press and hold for automatic channel search, "SEAR" shows on the display when searching is in progress.

CD & USB Playback

This unit is compatible with audio CD-R/RW discs.

Notes on CD-R/RW: Do not affix any type of labels to either side (recordable or labeled side) of a CD-R/RW disc as this may result in the unit malfunctioning.

Playback capability for CD-RW discs may vary due to variations in the quality of the CD-RW disc and the recorder used to create the disc.

Note: Be sure to remove all discs from the CD compartment before moving or transporting the unit!

Notes on mp3/WMA Discs:

- Use mp3 as the extension when converting audio files into mp3 for saving onto CD-R(W) or CD-RW, e.g. ABC03.mp3. Do not use any other extension e.g. .doc, .pdf.
- Do not use the .mp3 extension for other text or non-audio data files as this may result in serious malfunction or harmful noise interference.
- For better quality in mp3 disc playback, the CD quality should be recorded 128Kbps or above.
- Disc data size > 650MB is not recommended.
- Total files should not exceed 412 and the total folders should not exceed 100. It also depends on the length of the file/folder names.
- For mixed mode discs, only one mode will be selected for playback depending on the recording format.
- To ensure good performance, wait until the disc changer completely reads the disc before proceeding.
- mp3 files in CD ROM EXTRA format disc cannot be recognized.

Basic Playback

Refer to "Quick Start" for basic playback.

Random Playback

Press **Ⓢ** on the remote control to turn on or off random playback. "Random" shows on the display when activated.

Repeat Playback

Press **Repeat** repeatedly on the remote control to select the corresponding icon shows on display when activated:

Repeat 1: repeat current songs;
Repeat All: repeat all songs;
No icon: normal playback.

CD & USB Playback

Sampling Tracks

During playback, press **Intro** on the remote control to turn on or off intro mode which begins the beginning 10 seconds of each track / file. "Intro" shows on the display when activated.

Clock / Playback Display

During playback, press **Display** on the remote control to select among analogue clock, digital clock and playback information displays.

Selecting Folders (mp3 / WMA discs and USB only)

Press **Folder / Preset (up / down)** on the remote control to go to the next or previous non-empty folder.

Creating and Playing Programs

A maximum of 32 tracks can be programmed.

- In stop mode, press **Prog-Set** on the remote control. "Pr 01" (first program position) shows on the display (Buz as "SC-01").
- Press **▲** or **▼** to select a track / file to be stored into memory location 1.
- Press **Prog-Set** to confirm your selection and store that track into memory. The next available memory locations show on the display. Repeat step 2 and this step to store additional tracks. In program mode, the PROG. icon lights on the display.
- When finished programming, press **▶** to start playback of the program.

View and Edit Program List

- Press **Prog-Set** repeatedly to view program list. To edit program location, press **Prog-Set** until the location you want to edit is displayed.
- Press **▲** or **▼** to select the new track to be stored.
- Press **Prog-Set** to confirm.

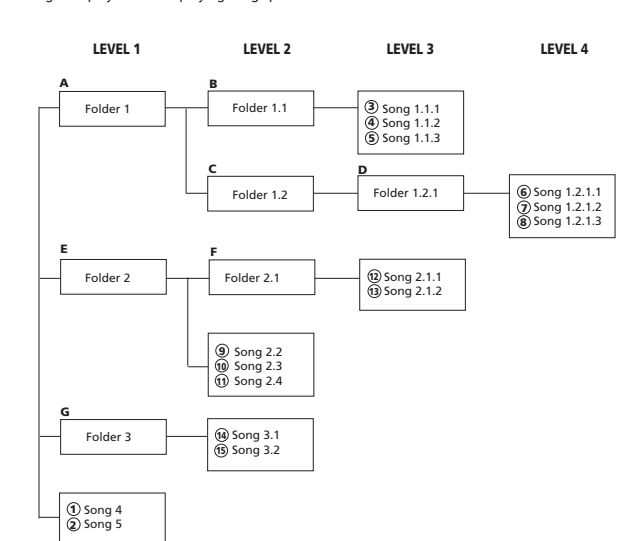
Deleting Programs

Press and hold **■** to clear program list and "clr" shows on the display. The program list will also be cleared once the CD compartment door is opened.

CD & USB Playback

mp3/WMA Playback Sequence

- Refer to the diagram below for playback sequence details on multi-level folder structure.
- Songs are played before playing songs placed in folders at each level.



Note: Folder playback sequence is indicated by the letters from A to G. Song playback sequence is indicated by the number 1 to 15 in front of the song name.

Radio

Basic Listening

Refer to "Quick Start" for selecting radio mode, band and searching channels.

Auto Channels Presetting

Press and hold **BAND** (or **Band-APP**) on the remote control to scan stations. A maximum of 30 stations can be stored. Beware of your preset channels being erased accidentally because the scanning and storing process is automatic upon pressing the button. "Prog" icon flashes during programming. Press **Band-APP** to stop programming.

Manual Channels Presetting

- A maximum of 30 stations can be stored.
- Press **BAND** (or **Band-APP**) on the remote control to select band.
 - Press **▲** or **▼** to select station to be stored.
 - Press **Prog-Set** on the remote control to enter program mode.

Auxiliary Input

Connecting External Device

Remove the **AUX IN** cover on unit front and insert audio cables (not included) to the L (left channel) and R (right channel) input jacks

Selecting and Playing External Device

Press **SOURCE** to select AUX mode. Control playback on your external device. Adjust volume by rotating the volume control knob on unit front.

USB Recording

You can record tracks or files directly from a disc to your USB device.

Recording

- Insert your USB device into the connection jack on the unit front.
- Load an audio CD or mp3/WMA disc in the disc compartment and press **SOURCE** to select CD mode.
- Press **RECORD** (or **Rec**) on the remote control to enter record mode. "REC" icon flashes on the display.
- Select track to be recorded by pressing **▶** or **▶▶**.
- Press **RECORD** (or **Rec**) on the remote control to start recording.
- To stop recording, press **RECORD** (or **Rec**) on the remote control or **■**. The recorded music will be saved in your USB device.

How you get service:

- Take your unit to any Authorized RCA Audio Service Center to identify your nearest Authorized RCA Audio Service Center, ask your dealer, look in the Yellow Pages, or call 1-800-336-1900.
- Show the Authorized Service Center Representative your evidence of purchase date or first rental.
- Pick up your unit when repairs are completed.
- Proof of purchase in the form of a bill of sale or receipted invoice which is evidence that the product is within the warranty period must be presented to obtain warranty service. For rental firms, proof of first rental is also required.

Deleting Recorded Files

- Insert your USB device into the connection jack on the unit front.
- Press **SOURCE** to select USB mode.
- Delete a single file.
- Press **■** to start playback of unwanted file.
- Press **Stereo-Del** on the remote control to enter deletion mode. "1 DEL" icon flashes on the display.
- Press **Stereo-Del** again to confirm deletion. "del" shows on the display until deletion finished.

To delete all files:

- While playback is stopped, press **Stereo-Del** on the remote control to enter deletion mode.
- To stop recording, press **RECORD** (or **Rec**) on the remote control or **■**. The recorded music will be saved in your USB device.

Troubleshooting Tips

Problem	Solution	Problem	Solution
System will not turn on	<ul style="list-style-type: none"> Secure power cord for a secure connection. Unplug the unit for a moment, and then plug into power source again. Check the outlet by plugging in another device. 	CD sound skips	<ul style="list-style-type: none"> Clean the disc. Check disc for warping, scratches, or other damage. Check if something is causing the system to vibrate. If so, move the system. Point the remote speakers are at least 3 feet away or on a different surface from the main unit. Switch to another function (USB, Tuner) and then back to CD.
No sound	<ul style="list-style-type: none"> Increase the volume setting. Check connection to speakers. Check that you have selected the appropriate function: CD, USB, Tuner. Make sure headphones are not plugged in. 	CD button will not respond	<ul style="list-style-type: none"> Check that the batteries are properly installed. Replace weak batteries. Check the system is plugged into power source. Point the remote directly at the system's front panel. Move closer to the system. Remove any obstacles between the remote and the system.
Poor radio reception	<ul style="list-style-type: none"> Check antenna connection. Move antenna. Turn off nearby electrical appliances, such as hair dryer, vacuum cleaner, microwave, fluorescent lights. 	Remote control does not work	<ul style="list-style-type: none"> Check that CD is in the tray. Check that CD label is facing up. Check that PAUSE mode is not on. Check that CD function is selected. Use CD lens cleaner. Clean the disc. Try another disc.
CD does not play	<ul style="list-style-type: none"> Check that CD is in the tray. Check that CD label is facing up. Check that PAUSE mode is not on. Check that CD function is selected. Use CD lens cleaner. Clean the disc. Try another disc. 		

More Information

Disconnect the audio system from the power source before performing any maintenance.

CD Player

CAUTION! This system operates with a laser. It must be operated by only a qualified technician.

Cleaning CDs

Dirty CDs can cause poor sound quality. Always keep CDs clean by wiping them gently with a soft cloth from the inner edge toward the outer perimeter.

CD Lens Care

When your CD lens gets dirty it can also cause the system to output poor sound quality. To clean the lens you will need to purchase a CD lens cleaner which can maintain the output sound quality of your system. For instructions on cleaning the CD lens, refer to the notes accompanying the lens cleaner.

Technical Specification

Power supply: 120V~60Hz
Dimensions (H x W x D inches):
Unit size - 7" x 5 1/2" x 8 1/2"
Speaker - 7" x 4 1/4" x 5 1/4"
Net Weight - 8 lbs
CD player: Response curve (+/- 2dB): 60Hz to 15 kHz
Rating Plate: Look for it at the back of the set.

Headset Safety

- Do not play your headset at high volume. Hearing experts warn against extended high-volume play.
- If you experience ringing in your ears, reduce volume or discontinue use.
- You should use with extreme caution or temporarily discontinue use in potentially hazardous situations. Even if your headset is an open-air designed to let you hear outside sounds, do not turn up the volume so high that you are unable to hear what is around you.

Important Battery Information

- Remove the batteries to avoid leakage if you do not use your remote control for more than one month.
- Discard leaky batteries immediately as leaking batteries may cause skin burns or other personal injuries. Dispose of batteries in the proper manner, according to provincial

Free Manuals Download Website

<http://myh66.com>

<http://usermanuals.us>

<http://www.somanuals.com>

<http://www.4manuals.cc>

<http://www.manual-lib.com>

<http://www.404manual.com>

<http://www.luxmanual.com>

<http://aubethermostatmanual.com>

Golf course search by state

<http://golfingnear.com>

Email search by domain

<http://emailbydomain.com>

Auto manuals search

<http://auto.somanuals.com>

TV manuals search

<http://tv.somanuals.com>