

SPECIAL FEATURE

This brush features solid-state electronic circuitry with a heat sensor that detects temperature loss and quickly boosts the power to bring the heat level back to optimum styling temperature. This allows for styling in half the time it takes with an ordinary brush.

This appliance is designed to operate on 120/240 volts, 50/60 Hz. It is not intended for commercial use. Hair should be clean, dry or nearly dry, and free of tangles before using.

HOW TO USE

For complete styling, hair should be clean, dry and free from dirt, hair spray, creams, etc. (This curling brush can also be used for quick touch-ups any time.)

1. Rest the curling brush on a smooth, flat surface, and plug it in.
2. Press ON/OFF switch, and the power indicator light will flash.
3. Select a temperature according to the type and texture of hair to be styled.
4. With heat control dial set at desired position, allow unit to pre-heat. The power indicator light will begin to flash to signal that appliance is heating up. When appliance is fully heated the indicator light will stop flashing. **Note:** For optimum styling performance, let the brush continue to heat for about 2 minutes before using.

THIS CURLING BRUSH CAN ALSO BE USED AS A 3/4" CURLING IRON BY REMOVING THE CURLING BRUSH ATTACHMENT

1. Unplug the unit and let it cool completely.
2. Remove brush attachment by holding the unit firmly by the handle and sliding off Curling Brush.
3. Plug in and let heat.

FOLLOW THE SAME INSTRUCTIONS IN THIS BOOK WHEN USING UNIT AS A CURLING IRON.

HOW TO GET PROFESSIONAL RESULTS WITH YOUR CURLING BRUSH

This unique curling brush has been designed with multiple temperatures, providing very high heat in the HI (25-30) settings for curling very coarse, thick, hard-to-curl hair, and very low heat in the LO (1-6) settings for curling extra fine, damaged or dry hair. It also provides a full range of heat settings between LO and HI, for all normal textures and thicknesses of hair.

TEST A SMALL SECTION OF HAIR BEFORE USING; THEN ADJUST TEMPERATURE DEPENDING ON TYPE OF HAIR.

HEAT SETTINGS WARNING

This multiple temperature curling brush has been specially designed to curl very coarse, thick, hard-to-curl hair. Due to this special application, the barrel of this curling brush will be hotter on the HI (25-30) settings than regular dual-heat curling brushes. **Due to the extreme capabilities of this brush, the barrel will be very hot in the HI (25-30) settings, so extra care should be taken when using.**

- Keep unit away from contact with all skin areas. Do not touch barrel with fingertips.
- For shorter hair, place a thin plastic comb between scalp and curling brush to avoid touching scalp.
- Place fingers of free hand on safety tip when more control is needed for curling.
- Test small section of hair to determine correct heat setting for the type of hair being styled.

HI (25-30)

These settings are very hot. Use only if hair is very coarse and highly resistant, but in good condition.

MED/HI (19-24)

Use heat settings in this range for dense, hard-to-curl hair in good condition.

MEDIUM (13-18)

Use heat settings in this range for thick, wavy hair in good condition.

LO/MED (7-12)

Use heat settings in this range for easy-to-curl, normal hair.

LO (1-6)

Use LO heat setting for very fine, fragile, damaged light-colored hair.

STYLING

1. Taking one section at a time, use the curling brush to roll hair in the direction of the curl desired, and hold a few seconds.
 2. When using as a curling iron, take one section at a time, lift clamp and place end of hair under the clamp so that it extends a little past the clamp. Release clamp so that it closes over the end of the hair. Roll hair in desired direction and hold for a few seconds.
 3. The cool tip can be a great help in winding. Use one hand on the handle and the fingers of the other on the cool tip.
- NOTE: To avoid tangling, do not wind hair around the curling brush more than two times.**
3. When hair feels warm, the curl is set.
 4. Carefully remove curling brush and allow curl to cool without disturbing it.
 5. Continue steps 1-4 all over your head.
 6. When you achieve your desired style, use the hot brush to brush hair into place.
 7. Afterward, once all curls have cooled thoroughly, gently brush and comb hair into the style desired.

STYLING TIPS

- **For a Flip**, take a 2" section of hair and roll the brush up over the hair.
- **For a Curl**, take a 2" section of hair and roll the brush under the hair.
- **For Volume and Body**, roll hair loosely around the brush. Allow hair to cool slightly before brushing.

AUTO-OFF

After approximately one hour, the unit will automatically shut itself off. To reactivate the unit, press ON/OFF switch.

DUAL VOLTAGE USE

This product contains a special electronic circuit. This circuit automatically adjusts to worldwide voltage. When traveling overseas, this product can be plugged into any voltage outlet without your having to adjust the product manually in any way. In some overseas countries, an attachment plug adapter of the proper configuration for the power supply receptacle may be required. **DO NOT USE** a voltage converter or extension cord with this product.

USER MAINTENANCE INSTRUCTIONS

1. To clean the unit, be sure it is cool and unplugged. Wipe handle, barrel and curling brush with a damp cloth. No other maintenance is necessary.
2. When not in use, store appliance where it will not become damaged. **Do not wrap cord around appliance.**
3. Do not attempt to repair the appliance yourself. Return to Remington Customer Service Center for repair.

STORAGE:

When not in use, unplug the unit. Allow it to cool and store out of reach of children in a safe, dry location.

Never wrap the cord around the appliance as this will cause the cord to wear prematurely and break. Handle cord carefully and avoid jerking it, twisting or straining it, especially at plug connections.

REMINGTON®**PROTECT & SHINE™**
Curling Brush and Iron
with 3X Protection

Teflon®
+ Ceramic
+ Ions

for beautiful, healthy,
shiny hair

CB-75i

IMPORTANT SAFEGUARDS

When using electrical appliances, especially when children are present, basic safety precautions should always be followed, including the following:

READ ALL INSTRUCTIONS BEFORE USING.

KEEP AWAY FROM WATER.

DANGER!

As with most electrical appliances, electrical parts are electrically live even when the switch is off.

TO REDUCE THE RISK OF DEATH BY ELECTRIC SHOCK:

1. Always unplug this appliance immediately after using.
2. Do not use while bathing or in a shower.
3. Do not place or store appliance where it can fall or be pulled into a tub or sink.
4. Do not place or drop in water or other liquid.
5. Do not reach for an appliance that has fallen into water. Unplug immediately.

WARNING

TO REDUCE THE RISK OF BURNS, ELECTRIC SHOCK, FIRE, OR INJURY TO PERSONS:

1. This appliance is for household use only.
2. An appliance should never be left unattended when plugged in.
3. Close supervision is necessary when this appliance is used by, on, or near children or invalids.
4. Use this appliance only for its intended use as described in this manual. Do not use attachments not recommended by Remington.

5. Never operate this appliance if it has a damaged cord or plug; if it is not working properly; if it has been dropped, damaged, or dropped into water. Return the appliance to the Remington Customer Service Center for examination and repair.
6. Keep the cord away from heated surfaces. **Do not wrap the cord around the appliance.**
7. Never block the air openings of the appliance or place it on a soft surface, such as a bed or couch, where the air openings may be blocked. Keep the air openings free of lint, hair, etc.
8. Never use while sleeping.
9. Never drop or insert any object into any opening.
10. Do not use outdoors or operate where aerosol (spray) products are being used or where oxygen is being administered.
11. This curling brush is hot when in use. Do not let eyes and bare skin touch heated surfaces.
12. Do not place the heated unit directly on any surface while it is hot or plugged in.
13. This appliance has a polarized plug (one blade is wider than the other). As a safety feature, this plug will fit in a polarized outlet only one way. If the plug does not fit fully in the outlet, reverse the plug. If it still does not fit, contact a qualified electrician. Do not attempt to defeat this safety feature.
14. Do not use with a voltage converter, or extension cord.



KEEP AWAY FROM CHILDREN

SAVE THESE INSTRUCTIONS

Thank you for purchasing the Remington® Professional Curling Brush and Iron. This unique curling brush and iron combines optimum styling features with an exclusive Teflon® plus Ceramic coating and Ions to provide your hair the ultimate protection and superior shine. Please carefully read the instructions contained in this leaflet, and keep them in a safe place for future reference.

Key Features

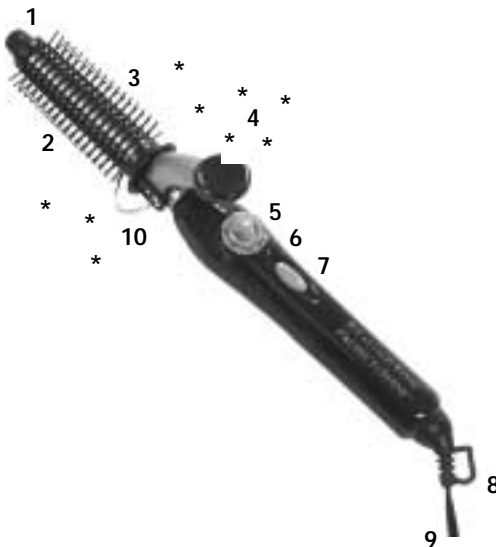
3X Protection: Protect & Shine™ products from Remington® have an exclusive Teflon® plus Ceramic coating and Ions for the ultimate defense against damage – for superior shine.

Teflon® coating: Non-stick Teflon® coating glides through any type of hair, preventing static, stickiness and build-up of mousses, gels, and hair sprays for smooth, shiny results – every time!

Ceramic coating: Ceramic protects against damaging hot spots with high, even heat to lock in moisture and create long-lasting styles.

Ionic conditioning: Negative ions are created, which neutralize positive ions to reduce static and the “frizzies”, leaving your hair looking shiny and healthy.

Product Features



1. Cool tip
2. Curling brush
3. Barrel with Teflon® plus Ceramic coating
4. Ions
5. LO (1) to HI (30) temperature control
6. Power indicator and ready light
7. ON/OFF switch
8. Hang-up loop
9. Tangle-free swivel cord
10. Safety stand

How to Use

Line Cord Safety Tips

1. To insert plug, grasp it firmly and guide it into outlet.
NOTE: This appliance has a polarized plug (one blade is wider than the other). As a safety feature, this plug will fit in a polarized outlet only one way. If the plug does not fit fully in the outlet, reverse the plug. If it still does not fit, contact a qualified electrician. Do not attempt to defeat this safety feature.
2. To disconnect the appliance, grasp plug and remove it from outlet. Do not pull or yank on the cord or appliance. **Do not wrap the cord around the unit.**

NOTE: Before each use, inspect the line cord for cuts and/or abrasion marks. If any are found, the appliance should be serviced and the line cord replaced. Please return it to Remington Customer Service for repair. **DO NOT OPERATE THE APPLIANCE IF THE LINE CORD SHOWS ANY DAMAGE.**

IMPORTANT

During the first few minutes of initial use, there may be a slight odor. This is normal and will quickly disappear.

Warranty Service

Full Two-Year Warranty

Remington Products Company, L.L.C. warrants this product against any defects that are due to faulty material or workmanship for a two-year period from the original date of consumer purchase. This warranty does not include damage to the product resulting from accident or misuse.

If the product should become defective within the warranty period, we will repair it or elect to replace it free of charge. We will return your product, transportation charges prepaid, provided it is delivered prepaid to: Remington Products Company, L.L.C., 60 Main Street, Bridgeport, CT 06604, Attention: Customer Service Department. Include a letter indicating the reason for return.

REMINGTON SHALL NOT BE RESPONSIBLE FOR ANY INCIDENTAL, SPECIAL OR CONSEQUENTIAL DAMAGES.

This warranty gives you specific legal rights and you may also have other rights that vary from state to state. Some states do not allow the exclusion or limitation of incidental, special or consequential damages.

Remington® Money Back Offer

If within 30 days after you have purchased your Remington® product, you are not satisfied and would like a refund, take back the product and sales slip indicating purchase price and date of purchase to the retailer from whom the product was purchased. Remington® will reimburse all retailers who accept the product within 30 days from the date of purchase. If you have any questions concerning the money back guarantee, please call 800-736-4648 in the U.S.

Visit us at www.remington-products.com
Questions or Comments:
Please call 800-736-4648 in the U.S.

This product is Listed by Underwriters Laboratories, Inc. and bears the mark.

120-240 VAC 50/60Hz

Remington and Protect & Shine are trademarks of Remington Products Company, L.L.C. Teflon® is a registered trademark of E. I. du Pont de Nemours Company and is used under license by Remington Products Company, L.L.C.
© 2003 R.P.C., L.L.C. Job #WPC03-123 11/03 Part No.15064

Remington Products Company, L.L.C.
60 Main Street
Bridgeport, CT 06604

MADE IN CHINA

Free Manuals Download Website

<http://myh66.com>

<http://usermanuals.us>

<http://www.somanuals.com>

<http://www.4manuals.cc>

<http://www.manual-lib.com>

<http://www.404manual.com>

<http://www.luxmanual.com>

<http://aubethermostatmanual.com>

Golf course search by state

<http://golfingnear.com>

Email search by domain

<http://emailbydomain.com>

Auto manuals search

<http://auto.somanuals.com>

TV manuals search

<http://tv.somanuals.com>