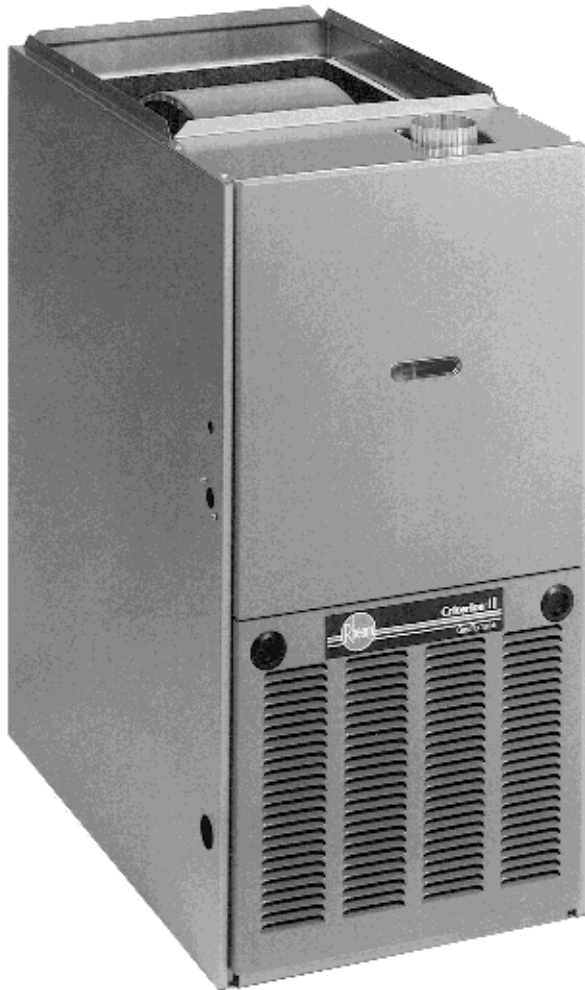


GAS FURNACES



CRITERION® II 80.0-82.2% A.F.U.E.† DOWNFLOW GAS FURNACES

The Rheem® Criterion® II line of downflow gas furnaces is designed for installation in closets, alcoves, utility rooms, or attics. The design is certified by CSA.

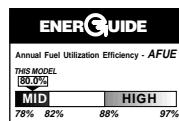
Features

- Patented heat exchanger, constructed of both stainless and aluminized steel for the maximum in corrosion resistance.
- Low profile "34 inch" [864 mm] design is lighter and easier to handle, and leaves room for optional equipment.
- Left or right side gas and electric inlet connections with quick, simple change.
- Direct Spark ignition models and integrated board with humidifier and electronic air cleaner hookups.
- Insulated blower compartment helps to reduce jacket loss and noise.
- Pre-paint galvanized steel cabinet.
- Molded permanent filter.
- Grab-holes in doors to aid in easy door removal and replacement.

A variety of cooling coils and plenums designed to use with Rheem Criterion II gas furnaces are available as optional accessories.

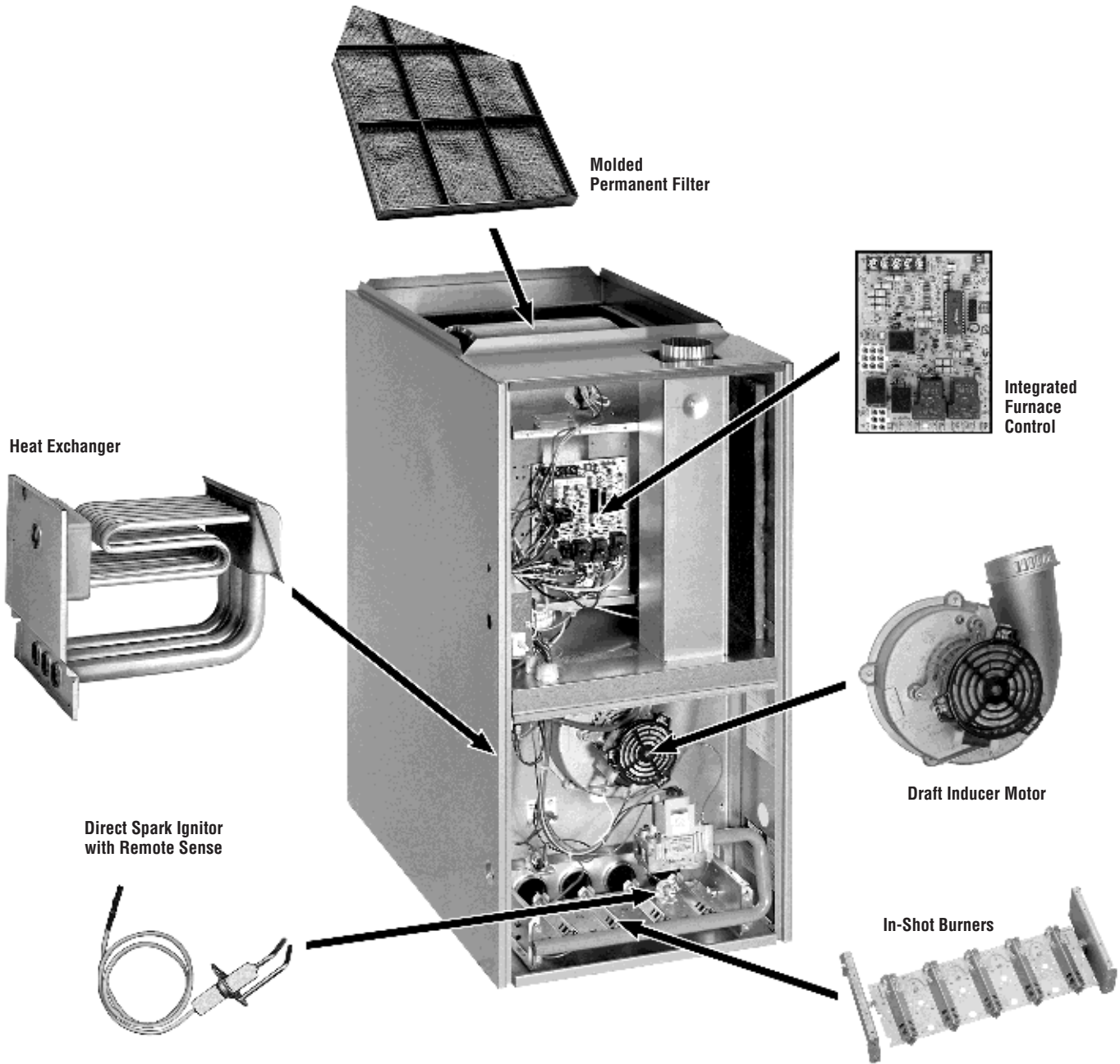
†A.F.U.E. (Annual Fuel Utilization Efficiency) calculated in accordance with Department of Energy test procedures.

RGLH- SERIES
Models with Input Rates from
50,000 to 150,000 BTU/HR
[15 to 44 kW]





RHEEM CRITERION II 80% DOWNFLOW GAS FURNACE



STANDARD EQUIPMENT

Completely assembled and wired; induced draft; pressure switch; redundant main gas control; blower compartment door safety switch; solid state time on/time off blower control; limit control; manual shut-off valve, pressure regulator for natural and L.P. (propane) gas; transformer; direct drive multi-speed blower motor. Furnaces are equipped with cooling/heating relay and transformer (40VA) ready for air conditioning applications. (Please note: a thermostat is not included as standard equipment.) Flame sensor diagnostics; on-board twinning; fused transformer (secondary), **3rd speed option for continuous fan; common heat/cool terminal.**

NOTE: Furnace is not listed for use with fuels other than natural or L.P. (propane) gas.

The complete terms of limited and other warranties are available at our sales office, or through local installer.

All models can be converted by a qualified Rheem distributor or local service dealer to use L.P. (propane) gas without changing burners. Factory approved kits must be used to convert from natural to L.P. (propane) gas and may be ordered as optional accessories from a Rheem parts distributor.

For L.P. (propane) operation, refer to Conversion Kit Index Form.

NOTE: For natural and L.P. (propane) gas models, standard hot surface ignition is 100% lockout type.

WARNING
THIS FURNACE IS NOT APPROVED
OR RECOMMENDED
FOR USE IN MOBILE HOMES

PHYSICAL DATA AND SPECIFICATIONS

MODEL NUMBERS RGLH- SERIES	05EAUER 05NAUER	07EAUER 07NAUER	07EAMGR 07NAMGR	10EAMER 10NAMER	10EBRJR 10NBRJR	12EARJR 12NARJR	15EARJR 15NARJR
Input-BTU/Hr [kW] ②	50,000 [15]	75,000 [22]	75,000 [22]	100,000 [29.3]	100,000 [29.3]	125,000 [36.6]	150,000 [44]
Heating Capacity BTU/Hr [kW] ①	41,000 [12]	60,000 [18]	60,500 [18]	80,000 [23]	81,000 [24]	99,000 [29]	120,000 [35]
High Altitude Input [kW]	45,000 [13]	67,500 [19.8]	67,500 [19.8]	90,000 [26.4]	90,000 [26.4]	112,500 [33]	135,000 [39.6]
High Altitude Output Capacity [kW]	36,500 [10.7]	53,500 [15.7]	54,000 [15.8]	72,000 [21.1]	72,500 [21.2]	89,000 [26.1]	107,500 [31.5]
Heat Ext. Static Pressure [kPa]	.10 [.025]	.12 [.029]	.12 [.029]	.15 [.037]	.15 [.037]	.20 [.05]	.20 [.05]
Blower (D x W) [mm]	11 x 6 [279 x 152]	11 x 6 [279 x 152]	11 x 7 [279 x 178]	11 x 6 = 10*AU [279 x 152] 11 x 7 = 10*AM [279 x 178]	11 x 10 [279 x 254]	11 x 10 [279 x 254]	11 x 10 [279 x 254]
Motor H.P. [W]-Speeds [W]-PSC Type	1/2-4-PSC [373]	1/2-4-PSC [373]	3/4-4-PSC [559]	1/2-4-PSC [373]	3/4-4-PSC [559]	3/4-4-PSC [559]	3/4-4-PSC [559]
Motor Full Load Amps	6.8	7.1	9.5	7.1	9.5	9.5	9.5
Heating Speed	MED-LOW	MED-HIGH	MED-LOW	MED-HIGH	MED-LOW	MED-LOW	MED-LOW
Cooling Speed	HIGH	HIGH	MED-HIGH	HIGH	MED-HIGH	MED-HIGH	MED-HIGH
Cooling CFM @ .5" [kPa] E.S.P. (Nominal) [L/s]	1200 [566]	1200 [566]	1600 [755]	1200 [566]	2000 [944]	2000 [944]	2000 [944]
Rated E.S.P. (In. W.C.) [kPa]	.50 [.12]	.50 [.12]	.50 [.12]	.50 [.12]	.50 [.12]	.50 [.12]	.50 [.12]
Temperature Rise Range °F [°C]	25-55 [13.9-30.6]	40-70 [22.2-38.9]	25-55 [13.9-30.6]	55-85 = 10*AU [30.6-47.2] 45-75 = 10*AM [25-41.7]	40-70 [22.2-38.9]	40-70 [22.2-38.9]	50-80 [27.8-44.4]
Max. Outlet Air Temp. °F [°C]	155 [68.3]	165 [73.9]	155 [68.3]	190 [87.8]	190 [87.8]	180 [82.2]	190 [87.8]
Standard Filter [mm]	(1) 14 x 20 [356 x 508]	(2) 12 x 20 [305 x 508]	(2) 12 x 20 [305 x 508]	(2) 12 x 20 [305 x 508]	(2) 14 x 20 [356 x 508]	(2) 14 x 20 [356 x 508]	(2) 14 x 20 [356 x 508]
Approx. Shipping Weight (Lbs.) [kg]	85 [38.6]	105 [47.6]	105 [47.6]	115 [52.2]	120 [54.4]	140 [63.5]	150 [68.0]
AFUE-Electric Ignition Models ①	82.2%	80.5%	81.1%	80.2%	80%	80%	80%
California Seasonal Efficiency-Electric Ignition No. Models	75.9/76.2	74.4/74.9	75.1/75.5	75.2/75.2	74.7/74.7	75.2/75.3	76.0/75.9

NOTES: All models are 115V, 60HZ, 1Ø. Gas connection size for all models is 1/2" N.P.T.

① In accordance with D.O.E. test procedures.

② See Conversion Kit Index Form No. 92-21519-52 for U.S. models and Form No. 92-21519-53 for Canadian models for high altitude derate.

MODEL IDENTIFICATION—DOWNFLOW MODELS

R	G	L	H	—	07E	A	U	E	R
Rheem	Gas Furnace	Downflow	Design Series		Heating Input Designation	Variations	Blower Designation	Heating & Cooling Designation	Fuel Type
					Electric Ignition	A = Std. Cabinet	U = 11 x 6 [279 x 152 mm]	S = 500-1200 CFM [236-566 L/s]	R = Natural Gas, U.S. and Canadian Standard Furnace
					NO _x Model	B = Wide Cabinet	M = 11 x 7 [279 x 178 mm]	E = 1100-1330 CFM [519-628 L/s]	
					Input BTU/HR		R = 11 x 10 [279 x 254 mm]	G = 1450-1750 CFM [684-826 L/s]	
					05E 05N 50,000 [15 kW]			J = 1800-2075 CFM [850-979 L/s]	
					07E 07N 75,000 [22 kW]				
					10E 10N 100,000 [29 kW]				
					12E 12N 125,000 [37 kW]				
					15E 15N 150,000 [44 kW]				

[] Designates Metric Conversions

DOWNFLOW DIMENSIONS

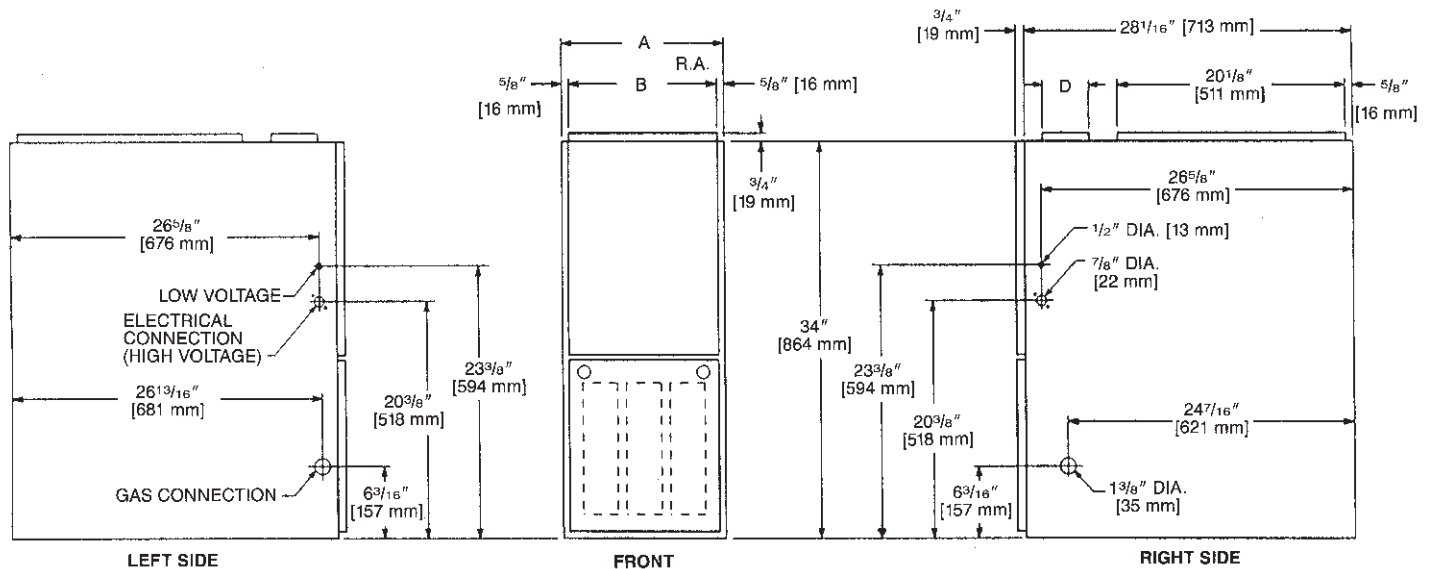
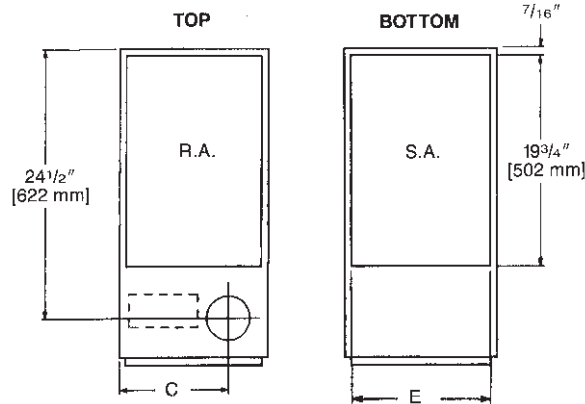


TABLE 1. DIMENSIONS AND CLEARANCE TO COMBUSTIBLE MATERIAL (INCHES) [mm]

MODEL RGLH-SERIES	A	B	C	D	E	REDUCED CLEARANCES (IN.) [mm]						
						LEFT SIDE	RIGHT SIDE	BACK	TOP	FRONT	VENT	SHIP. WGTS. (LBS.) [kg]
05	14 [356]	12 ²⁷ / ₃₂ [326]	10 ³ / ₈ [264]	①	13 ¹ / ₈ [333]	0	4 ②	0	1 [25]	3 [76]	6 [152] ③	85 [38.6]
07	17 ¹ / ₂ [445]	16 ¹¹ / ₃₂ [415]	12 ¹ / ₈ [308]	①	16 ⁵ / ₈ [422]	0	3 ②	0	1 [25]	3 [76]	6 [152] ③	105 [47.6]
10 (A)	17 ¹ / ₂ [445]	16 ¹¹ / ₃₂ [415]	12 ¹ / ₈ [308]	①	16 ⁵ / ₈ [422]	0	3 ②	0	1 [25]	3 [76]	6 [152] ③	115 [52.2]
10 (B)	21 [533]	19 ²⁷ / ₃₂ [504]	13 ⁷ / ₈ [352]	①	20 ¹ / ₈ [511]	0	0	0	1 [25]	3 [76]	6 [152] ③	120 [54.4]
12	24 ¹ / ₂ [622]	23 ¹¹ / ₃₂ [593]	15 ⁵ / ₈ [397]	①	23 ⁵ / ₈ [600]	0	0	0	1 [25]	3 [76]	6 [152] ③	140 [63.5]
15	24 ¹ / ₂ [622]	23 ¹¹ / ₃₂ [593]	15 ⁵ / ₈ [397]	①	23 ⁵ / ₈ [600]	0	0	0	1 [25]	3 [76]	6 [152] ③	150 [68]

NOTES: ① May require a 3" [76 mm] to 4" [102 mm] or 3" [76 mm] to 5" [127 mm] adapter.

② May be 0" [0 mm] with type B vent.

③ May be 1" [25 mm] with type B vent.

Furnaces must be vented in accordance with ANSI Z21.47-1993 • CAN/CGA-2.3-M93 venting table guidelines, and in accordance with local codes.

BLOWER PERFORMANCE DATA—DOWNFLOW MODELS

MODEL NUMBER RGLH-SERIES	BLOWER SIZE [mm]	MOTOR H.P. [W]	BLOWER SPEED	CFM [L/s] AIR DELIVERY EXTERNAL STATIC PRESSURE INCHES [kPa] WATER COLUMN						
				.1 [.02]	.2 [.05]	.3 [.07]	.4 [.10]	.5 [.12]	.6 [.15]	.7 [.17]
				05MAUER 05EAUE 05NAUER	11 x 6 [279 x 152]	1/2 [373]	LOW MED-LO MED-HI HIGH	735 [347] 1025 [484] 1185 [559] 1345 [635]	715 [337] 1015 [479] 1165 [550] 1330 [628]	690 [326] 995 [470] 1150 [543] 1310 [618]
07MAUER 07EAUE 07EAUER	11 x 6 [279 x 152]	1/2 [373]	LOW MED-LO MED-HI HIGH	835 [394] 990 [467] 1140 [538] 1300 [614]	820 [387] 975 [460] 1125 [531] 1290 [609]	800 [378] 955 [451] 1105 [522] 1265 [597]	775 [366] 935 [441] 1080 [510] 1245 [588]	750 [354] 905 [427] 1050 [496] 1215 [573]	720 [340] 875 [413] 1020 [481] 1180 [557]	685 [323] 835 [394] 980 [463] 1140 [538]
07MAMGR 07EAMG 07NAMGR	11 x 7 [279 x 178]	3/4 [559]	LOW MED-LO MED-HI HIGH	1210 [571] 1580 [746] 1915 [904] —	1205 [569] 1560 [736] 1880 [887] 2050 [967]	1195 [564] 1550 [732] 1825 [861] 1995 [942]	1180 [557] 1530 [722] 1790 [845] 1940 [916]	1165 [550] 1495 [706] 1740 [821] 1885 [890]	1155 [545] 1465 [691] 1675 [791] 1835 [866]	1130 [533] 1430 [675] 1600 [755] 1770 [835]
* 10EAME* 10NAMER	* 11 x 7 [279 x 178]	* 1/2 [373]	LOW MED-LO MED-HI HIGH	935 [441]* 1070 [505] 1240 [585] 1420 [670]	910 [429]* 1055 [498] 1210 [571] 1395 [658]	885 [418]* 1040 [491] 1190 [562] 1370 [647]	855 [404]* 1010 [477] 1165 [550] 1340 [632]	825 [389]* 980 [463] 1135 [536] 1305 [616]	785 [370]* 945 [446] 1095 [517] 1265 [597]	760 [359]* 905 [427] 1055 [498] 1220 [576]
10EBRJR 10NBRJR	11 x 10 [279 x 254]	3/4 [559]	LOW MED-LO MED-HI HIGH	1330 [628] 1690 [798] — —	1295 [611] 1670 [788] 2085 [984] 2410 [1137]	1285 [606] 1655 [781] 2055 [970] 2355 [1111]	1245 [588] 1615 [762] 2005 [946] 2305 [1088]	1225 [578] 1585 [748] 1970 [930] 2240 [1057]	1205 [569] 1565 [739] 1945 [918] 2165 [1022]	1160 [547] 1525 [720] 1880 [887] 2100 [991]
12EARJR 12NARJR	11 x 10 [279 x 254]	3/4 [559]	LOW MED-LO MED-HI HIGH	1330 [628] — — —	1295 [611] 1690 [798] 2090 [986] 2395 [1130]	1280 [604] 1660 [783] 2035 [960] 2335 [1102]	1240 [585] 1635 [772] 1985 [937] 2260 [1067]	1215 [573] 1580 [746] 1930 [911] 2185 [1031]	1210 [571] 1535 [724] 1850 [873] 2080 [982]	1175 [555] 1480 [698] 1785 [842] 1965 [927]
15MARJR 15EARJR 15NARJR	11 x 10 [279 x 254]	3/4 [559]	LOW MED-LO MED-HI HIGH	1300 [614] 1675 [791] 2105 [993] —	1280 [604] 1650 [779] 2075 [979] 2340 [1104]	1230 [580] 1620 [765] 2035 [960] 2290 [1081]	1205 [569] 1570 [741] 1990 [939] 2215 [1045]	1170 [552] 1545 [729] 1955 [923] 2145 [1012]	1115 [526] 1485 [701] 1900 [897] 2080 [982]	1030 [486] 1425 [673] 1815 [857] 1995 [942]

NOTES: *Not to be used as a heating speed.
Data compiled with factory filters installed.

[] Designates Metric Conversions

ACCESSORIES—DOWNFLOW

DOWNFLOW WARNING: Unit design is certified for installation on non-combustible floor. A special factory supplied combustible floor sub-base is required when installing on a combustible floor. Failure to install the sub-base may result in fire, property damage and personal injury.

COMBUSTIBLE FLOOR BASE DIMENSIONS

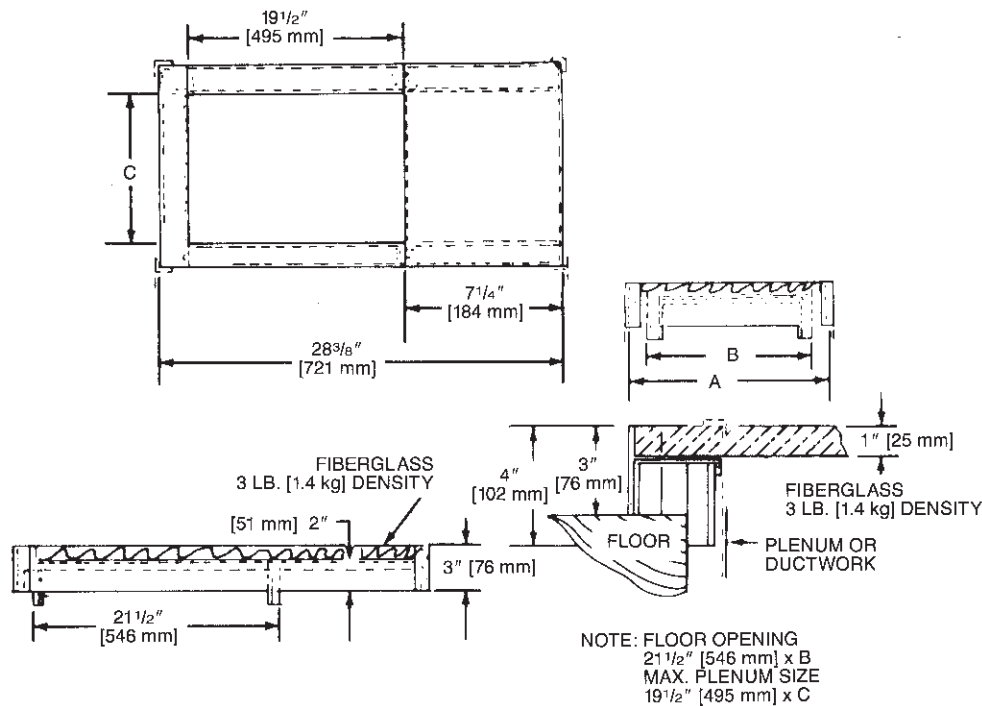
COMBUSTIBLE FLOOR BASE	USE WITH FURNACE SIZES	A IN. [mm]	B IN. [mm]	C IN. [mm]
RXGC-B14	RGLH-05	14 ¹ / ₂ [368]	13 ¹ / ₄ [337]	11 ¹ / ₄ [286]
RXGC-B17	RGLH-07, RGLH-10(-)A	18 [457]	16 ³ / ₄ [425]	14 ³ / ₄ [451]
RXGC-B21	RGLH-10(-)B	21 ¹ / ₂ [546]	20 ¹ / ₄ [514]	18 ¹ / ₄ [464]
RXGC-B24	RGLH-12, RGLH-15	25 [635]	23 ³ / ₄ [603]	21 ³ / ₄ [552]

PLENUM DATA—“A” COILS

Plenum adapters are required in some instances for use on downflow applications when plenum and furnace size do not match.

FURNACE WIDTH IN. [mm]	PLENUM WIDTH IN. [mm]	PLENUM ADAPTER DOWNFLOW	COIL PLENUM
14 [356]	16 ¹ / ₄ [413]	RXAA-C178	RXAL-B16BU
14 [356]	20 ¹ / ₄ [514]	RXAA-C179	RXAL-B20BU
17 ¹ / ₂ [445]	16 ¹ / ₄ [413]	RXAA-C186	RXAL-B16BU
17 ¹ / ₂ [445]	20 ¹ / ₄ [514]	RXAA-C180	RXAL-B20BU
17 ¹ / ₂ [445]	21 ⁵ / ₈ [549]	RXAA-C189	RXAL-B21BU
17 ¹ / ₂ [445]	25 ¹ / ₄ [641]	RXAA-C181	RXAL-B25BU
21 [533]	22 ¹ / ₄ [565]	RXAA-C182	RXAL-B22BU
21 [533]	25 ¹ / ₄ [641]	RXAA-C183	RXAL-B25BU
24 ¹ / ₂ [622]	25 ¹ / ₄ [641]	RXAA-C184	RXAL-B25BU
24 ¹ / ₂ [622]	21 ⁵ / ₈ [549]	RXAA-C190	RXAL-B21BU

NOTE: See Form Number C11-206 for MultiFlex coil data.



RXPF-F01 and F02

FOSSIL FUEL KITS—are for use with Rheem Heat Pumps and Criterion II warm air furnaces. The RXPF-F02 meets TVA requirements.

RXGF-CC*

FILTER RACK—Downflow top return mount.

NOTE: Filter racks are shipped without filters.

*Filters available through PROSTOCK™.

OPTION CODE FOR HIGH ALTITUDE: US-277
Canada-298

(Kit packaged with furnace. Requires field installation.)

GENERAL TERMS OF LIMITED WARRANTY

Rheem will furnish a replacement for any part of this product which fails in normal use and service within the applicable period stated, in accordance with the terms of the limited warranty.

For Complete Details of the Limited Warranty, Including Applicable Terms and Conditions, See Your Local Installer or Contact the Manufacturer for a Copy.

Gas Heat Exchanger Limited WarrantyTwenty (20) Years
*Any Other Part.....One (5) Years

*This five year limited warranty is applicable only to single-phase products installed in residential applications on or after January 1, 2001.

NOTES

Before proceeding with installation, refer to installation instructions packaged with each model, as well as complying with all Federal, State, Provincial, and Local codes, regulations, and practices.

**RHEEM
AIR CONDITIONING
DIVISION**

5600 Old Greenwood Road, Fort Smith, Arkansas 72908



"In keeping with its policy of continuous progress and product improvement, Rheem reserves the right to make changes without notice."

Free Manuals Download Website

<http://myh66.com>

<http://usermanuals.us>

<http://www.somanuals.com>

<http://www.4manuals.cc>

<http://www.manual-lib.com>

<http://www.404manual.com>

<http://www.luxmanual.com>

<http://aubethermostatmanual.com>

Golf course search by state

<http://golfingnear.com>

Email search by domain

<http://emailbydomain.com>

Auto manuals search

<http://auto.somanuals.com>

TV manuals search

<http://tv.somanuals.com>