



***Want to print in color at half the cost of copying***

***in black & white?***

***Need a "work horse"***

***to print mid- to***

***long-run jobs?***

# Priport JP8500 Digital Duplicator and TC-II Production Printer with SeriPrint

***Looking for durability,***

***versatility and***

***full connectivity?***

| INPUT   | MANAGEMENT  | OUTPUT   |
|---|---|--|
| <ul style="list-style-type: none"> <li>• Doubles productivity – prints 2 colors in one pass</li> <li>• Increases versatility – unlimited color choices with custom PMS inks</li> <li>• Saves money – low cost per copy (100 copies: \$0.003)</li> <li>• Print quality – 600 dpi resolution</li> </ul> | <ul style="list-style-type: none"> <li>• Works with your system – prints from network, PC or Mac</li> <li>• High productivity – half a million prints per month</li> <li>• Reliability – mean time between service calls is 210,000 prints</li> <li>• Awards – line-up has won BBB Editor's Choice Award 5 years running</li> </ul> | <ul style="list-style-type: none"> <li>• Speed – prints at 120 PPM</li> <li>• Versatility – prints on 13 lb. bond to 110 lb. card stock</li> <li>• Flexibility – NCR to envelopes to 12" x 17.5" paper</li> <li>• Durability – no heat reduces problems associated with fusing</li> <li>• Durability – fully cured and dried ink immediately!</li> </ul> |

All noted trademarks are the property of their respective owners.

# JP8500

***Production Solutions***

# RICOH SERIPRINTER MODEL 25



## Print Production System

### Raising Digital Duplicator Performance

Imagine expanding the capabilities of a digital duplicator to match the versatility and production values that you expect! With the breakthrough SeriPrinter™ Model 25, businesses and organizations like yours can do just that!

By coupling the ground-breaking technology of this print system with your existing digital duplicator and TC-II Production Printer, you can immediately benefit from high-volume production with quality printing in either full color (CMYK) or standard spot colors! The only manufacturer to bring such high-powered, affordable production to the digital imaging marketplace has taken the operation of digital duplicators to incredible new heights.



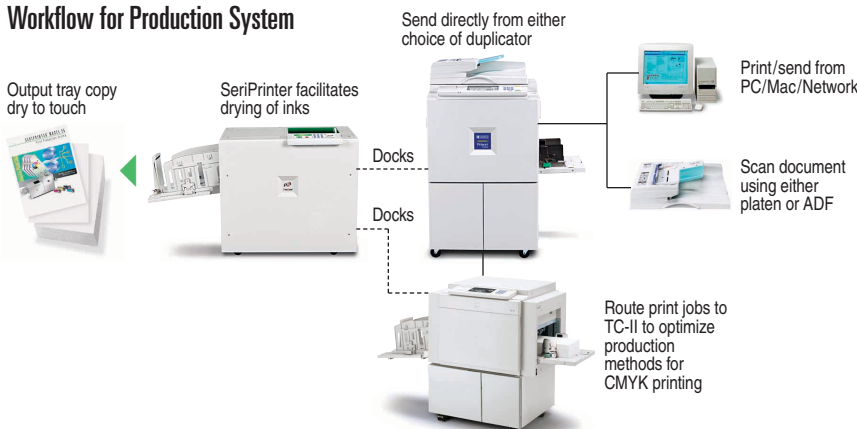
**The No-Smudge Solution.** Advanced engineering enables the Model 25 to completely eliminate ink smudging and offsetting no matter what the type of stock selected. Because the specially-formulated resin-based ink is fully cured and dried as the paper exits the unit, there is no need to wait between color passes. Now four-color printing of intricate production jobs can be produced clearly and seamlessly, whether your job entails embossing or requires the use of specialty papers, cardstock or envelopes.

**Smart Technology Means More for Less.** The SeriPrinter Model 25 brings low-cost, full-color process printing within your reach by utilizing enhanced digital technology in a copier-like print engine. Unlike other output methods, both speed and printing pressure can be adjusted to accommodate the type of stock for more accurate results. A unique vacuum process works in conjunction with your existing digital system throughput technology to maintain exacting registration.

**Full Color at a Fraction of the Cost.** By incorporating the SeriPrinter Model 25 into your print production operations, you are not only saving on the upfront investment versus purchasing a more advanced four-color press; you will also enjoy continual full-color output at a cost per copy that's literally a fraction of other digital systems. Because no extensive plate-making, chemical cleaning, or costly toner is involved, short-run users can now reap big production benefits!



### Workflow for Production System



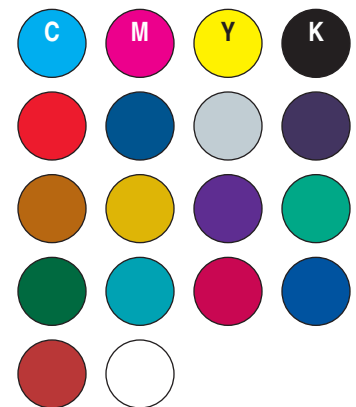
### Specifications

|                                      |   |
|--------------------------------------|---|
| <b>Connectable Availability</b>      | Priport JP8500 & JP5500 digital duplicators and TC-II Digital Production Printer    |
| <b>Paper Handling System</b>         | Variable speed belt transfer with internal vacuum mechanism                         |
| <b>Paper Sizes</b>                   | Min. 2.8" x 5.8"; Max. 12.8" x 17.6"  |
| <b>Paper Weights</b>                 | 13 lb. Bond – 110 lb. Index, Envelopes, Vellum, Mylar, Tyvek & matted-finish glossy |
| <b>Print Speeds</b>                  | 60 – 120 ppm based on duplicator configuration                                      |
| <b>Paper Delivery Capacity</b>       | 1,000 sheets (based on 20 lb. Bond)   |
| <b>Roll On/Roll Off Installation</b> | Easy mobility with adjustable height guides   |
| <b>Unit Console Timers</b>           | For copies, lamp hours (running totals)   |
| <b>Drying Mechanism</b>              | Ink polymerization  |
| <b>Drying Unit</b>                   | 2 on-board variable watt lamps (Min: 250W; Max. 650W)                               |
| <b>Power Source</b>                  | 120V, 60Hz, 2.4A  |
| <b>Power Consumption</b>             | 1,617 W   |
| <b>Noise Emission</b>                | Less than 60 dB   |
| <b>Dimensions (WxDxH)</b>            | 30.9" x 22.0" x 29.1"   |
| <b>Weight</b>                        | 176.0 lbs.  |

### Ink Color Choices

#### Current Standard Colors

(Colors noted are approximations of actual inks)



#### Custom Colors

Customized exact match PMS® colors available on demand



Ricoh Corporation, Five Dedrick Place, West Caldwell, NJ 07006  
Phone: (973) 882-2000 Website: <http://www.ricoh-usa.com>

Printed in U.S.A. on recycled paper because Ricoh cares

Ricoh is a registered trademark of Ricoh Company, Ltd. All other trademarks are the property of their respective owners. © Ricoh Corporation  
Ricoh reserves the right to modify any standard ink choices without notice. Specifications and external appearance are subject to change without notice.

CA-0330

Download from [www.Somanuals.com](http://www.Somanuals.com). All Manuals Search And Download.

## Free Manuals Download Website

<http://myh66.com>

<http://usermanuals.us>

<http://www.somanuals.com>

<http://www.4manuals.cc>

<http://www.manual-lib.com>

<http://www.404manual.com>

<http://www.luxmanual.com>

<http://aubethermostatmanual.com>

Golf course search by state

<http://golfingnear.com>

Email search by domain

<http://emailbydomain.com>

Auto manuals search

<http://auto.somanuals.com>

TV manuals search

<http://tv.somanuals.com>