

7" WET SAW

OWNER'S MANUAL AND PARTS LIST

SCIE à EAU de 7 pouces

MANUEL D'UTILISATION ET LISTE DE PIÈCES

SIERRA PARA AGUA de 7"

MANUAL DE OPERACIÓN Y LISTA DE PARTES

Model 60007

Modèle 60007

Articulo 60007

CAUTION!

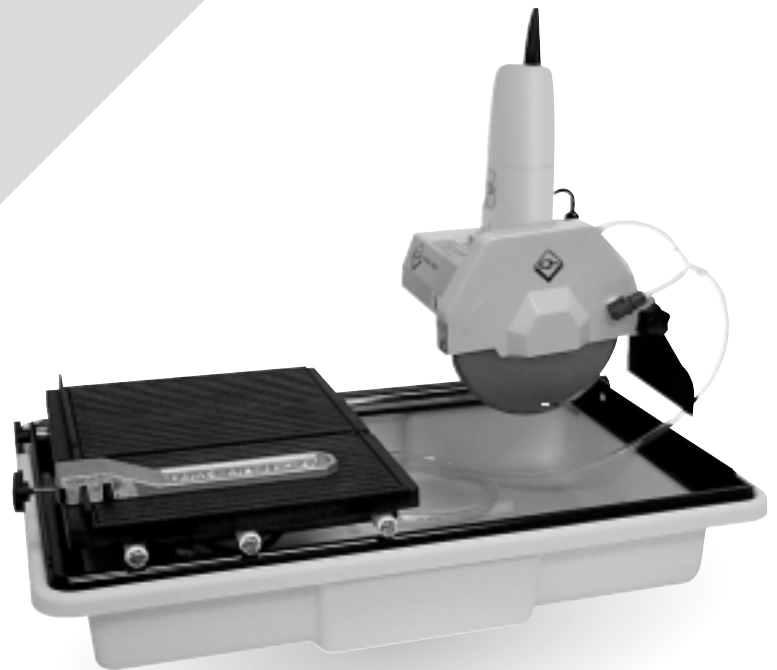
Read and follow all safety and operating instructions before using this saw.

PRÉCAUTION!

Lire et suivre toutes les directives de sécurité et d'opération avant d'utiliser cette scie.

¡AVISO!

Lea y siga todas las instrucciones de funcionamiento y seguridad antes de usar esta sierra.



QEP CO., INC.
1081 Holland Drive
Boca Raton, FL USA 33487
561-994-5550 • Fax: 561-241-2830
www.qep.com

ROBERTS CONSOLIDATED INDUSTRIES, INC.
600 N. Baldwin Park Blvd.
City of Industry, CA USA 91749
626-369-7311 • Fax: 626-369-6191

ROBERTS CO. CANADA LTD.
2070 Steeles Ave.
Bramalea, ON CANADA L6T-1A7
905-791-4444 • Fax: 905-791-1998



ENGLISH

TABLE OF CONTENTS

Safety Instructions for Wet Saw3
 Safety Guidelines.....3
 Electrical Requirements4
 Warning5
 State-of-the-Art Features5
 Electrical / Motor Specifications5
 Unpacking, Assembly & Set-Up5
 Cutting Head Assembly Installation5
 Blade & Blade Guard Installation....6
 Water Pump Installation6
 Water Pump Safety Guidelines6
 Cutting Table6
 Saw Operation7
 Saw Maintenance7
 Do's & Dont's for Diamond Blades 7
 Diagram of Wet Saw8
 Parts List8

FRANÇAIS

TABLE DES MATIÈRES

Règles de Sécurité pour la Scie9
 Directives de Sécurité..... 9
 Besoins Électriques10
 Mise en Garde11
 Caractéristiques.....11
 Spécifications – Électrique
& Moteur11
 Déballage et Assemblage11
 Assemblage de la Tête de Coupe 11
 Installation du Disque et
Protection de Disque.....12
 Installation de la Pompe à Eau12
 Directives de Sécurité pour la
Pompe à Eau.....12
 Table de Coupe.....12
 Procédures d'Utilisation.....13
 Entretien de la Scie13
 À Faire et À Ne Pas Faire13
 Diagramme de la Scie14
 Liste de Pièces.....14

ESPAÑOL

TABLA DE CONTENIDO

Pautas de Seguridad para Sierra ..15
 Pautas de Seguridad 15
 Electrical Requirements16
 Aviso17
 Características de la Sierra.....17
 Especificaciones para el Motor
Eléctrico17
 Desempaque et Montaje17
 Instalacion – Cutting Head17
 Instalacion de la Cuchilla.....18
 Instalacion de la Bomba de Agua 18
 Pautas de Seguridad para
la Bomba de Agua18
 La Mesa de Cortar.....18
 Operación de la Sierra.....19
 Mantenimiento de la Sierra.....19
 Do's & Dont's for Diamond Blades..19
 Vista de la Sierra20
 Lista de Partes20

ENGLISH

LIMITED WARRANTY

This product is covered by a 30-day warranty from the date of purchase. If the product is defective in workmanship or material and upon returning the product to distributor/dealer in its original packaging, Q.E.P. will repair and/or replace it free of charge. This warranty DOES NOT COVER normal wear, nor any damage as a result of accidents, misuse, abuse or negligence. Q.E.P.'s obligations under this warranty shall be limited to the repair and/or replacement of the product. Q.E.P. shall not be liable for consequential damages. This warranty is void if the product or any of its components are modified, altered, or in any way changed, or if the product is used in a manner or with a blade that is not recommended by Q.E.P. The water pump is excluded from this warranty and is subject to its manufacturer's warranty.

This warranty is in lieu of all other warranties expressed or implied.

IMPORTANT: The warranty card must be filled out and received within 30 days of purchase to validate warranty.

FRANÇAIS

GARANTIE LIMITÉE

Ce produit est couvert par une garantie de 30 jours à partir de la date d'achat. Si le produit est défectueux dans sa fabrication ou ses matériaux, Q.E.P. le réparera et/ou le remplacera gratuitement si le produit est retourné dans son emballage d'origine au distributeur/représentant. Cette garantie NE COUVRE PAS l'usure normale, ou tout dommage causé par des accidents, un usage anormal, abusif ou négligent. Les obligations de Q.E.P. sous cette garantie seront limitées à la réparation et/ou au remplacement du produit. Q.E.P. ne sera pas responsable des dommages directs. Cette garantie est nulle si le produit ou ses éléments sont modifiés, altérés, ou changés de quelque manière, ou si le produit est utilisé d'une manière ou avec une lame qui n'est pas recommandée par Q.E.P. La pompe à eau est exclue de cette garantie et est sujette à la garantie de son fabricant.

Cette garantie remplace toute autre garantie explicite ou implicite.

IMPORTANT: Afin de valider la garantie, la fiche de garantie doit être remplie et reçue dans un délai de trente jours à compter de la date d'achat.

ESPAÑOL

GARANTIA LIMITADA

Este producto esta cubierto por una garantía de un 30 días desde la fecha de compra. Q.E.P. CO., INC. reparara y/o reemplazara el producto sin costo al consumidor si el producto esta defectuoso en material o mano de obra y se devuelve al distribuidor en su empaque original. Esta garantía NO CUBRE desgaste normal, ni danos ausados por accidentes, mal uso, abuso o negligencia. La responsabilidad de Q.E.P. CO., INC. bajo esta garantía esta limitada a la reparacion y/o reemplazo del producto. Q.E.P. CO., INC. no sera responsable por danos resultantes. Esta garantía quedara nula si el producto o algunos de sus componentes se modifican, alteran, o se cambian de alguna manera, o si el producto se usa de una manera o con una cuchilla que no este recomendada por Q.E.P. CO., INC. La bomba de agua queda excluida de esta garantía y esta sujeta a la garantía del fabricante.

Esta garantía reemplaza cualesquier otras garantías expresas o implícitas.

IMPORTANTE: La tarjeta de garantía debera rellenarse y ser recibida por Q.E.P. 30 días despues de la compra para validar esta garantía.

SAFETY INSTRUCTIONS FOR WET SAW

READ THIS OWNERS MANUAL COMPLETELY AND MAKE SURE YOU UNDERSTAND ALL OF ITS SAFETY GUIDELINES.

1. **KEEP GUARDS IN PLACE** and in working order.
2. **REMOVE ADJUSTING KEYS & WRENCHES.** Form a habit of checking to see that keys and adjusting wrenches are removed from tool before turning it on.
3. **KEEP WORK AREA CLEAN.** Cluttered areas and benches invite accidents.
4. **DON'T USE IN A DANGEROUS ENVIRONMENT.** Don't use power tools in damp or wet locations or expose them to rain. Keep work area well lighted.
5. **KEEP CHILDREN AWAY.** All visitors should be kept safe distance from work area.
6. **MAKE WORKSHOP KID-PROOF** with padlocks, master switches or by removing starter keys.
7. **DON'T FORCE TOOL.** It will do the job better and safer at the performance level for which it was designed.
8. **WEAR PROPER APPAREL.** Do not wear loose clothing, gloves, neckties, rings, bracelets or other jewelry which may get caught in moving parts. Non-slip foot wear is recommended. Wear protective hair covering if you have long hair.
9. **ALWAYS USE SAFETY GLASSES.** Also use face or dust mask for commercial cutting operations. Everyday eyeglasses only have impact-resistant lenses, they NOT safety glasses.
10. **SECURE WORK.** Use clamps or a vise to hold work when practical. They are safer than using your hand and free both hands to operate tool.
11. **DON'T OVERREACH.** Keep proper footing and balance at all times.
12. **MAINTAIN TOOLS WITH CARE.** Keep tools sharp and clean for best and safest performance. Follow instructions for lubricating and changing accessories.
13. **DISCONNECT TOOLS BEFORE SERVICING** – when changing accessories, such as blades, bits, cutters, etc.
14. **REDUCE THE RISK OF UNINTENTIONAL STARTING.** Make sure switch is in OFF position before plugging in.
15. **USE RECOMMENDED ACCESSORIES.** Consult the owner's manual for recommended accessories. The use of improper accessories may cause risk of injury.
16. **NEVER STAND ON TOOL.** Serious injury could occur if the tool is tipped or if the cutting tool is unintentionally contacted.
17. **CHECK DAMAGED PARTS.** Before further use of the tool, a guard or other part that is damaged should be carefully checked to determine that it will operate properly and perform its intended function – check for alignment of moving parts, binding of moving parts, breakage of parts, mounting and any other conditions that may affect its operation. A guard or other part that is damaged should be properly repaired or replaced.
18. **DIRECTION OF FEED.** Feed work into the blade against the direction of rotation of the blade only.
19. **NEVER LEAVE TOOL RUNNING UNATTENDED.** Turn power off. Don't leave tool until it comes to a complete stop.

SAFETY GUIDELINES

READ THIS OWNER'S MANUAL COMPLETELY AND MAKE SURE YOU UNDERSTAND ALL OF ITS SAFETY GUIDELINES.

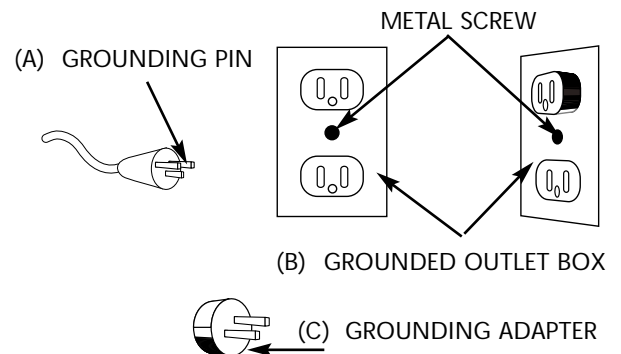
1. Keep your workspace clear and free of all debris.
2. Make sure the saw is in the "OFF" position before plugging it in.
3. Do not leave the saw unattended while it is running. Always return the power to the "OFF" position.
4. Always wear safety goggles, dust mask and ear protection when operating the saw (to comply with ANSI-Z87.1).
5. Always remain alert when the saw is in use. Inattention on the part of the operator may lead to serious injury.
6. Disconnect the unit from its power source before installing or changing blades and before cleaning or servicing the saw.
7. Keep the saw clean and maintained to achieve the safest and highest performance for every job.
8. Ensure that a continuous flow of water to both sides of blade during operation.
9. Do not cut dry with blades designed for wet cut.
10. Do not force the material being cut. Always let the blade cut at its own speed.
11. Keep the blade guard in the "DOWN" position while operating the saw specification.
12. Make sure you use the correct blade or profile wheel for the job you are doing.
13. This saw is equipped with a 3-prong electrical plug. Do not alter the plug or use a 2-prong receptacle.



ELECTRICAL REQUIREMENTS

- **CONNECTING TOOL TO POWER SOURCE OUTLET.** This tool must be connected to a grounded power source while in use to protect the operator from electrical shock.
- In the event of a malfunction or breakdown, grounding provides a path of least resistance for electrical current to reduce the risk of electrical shock. This tool is equipped with an electric cord having equipment grounding conductor and a grounding plug. The plug must be plugged into a matching outlet that is properly installed and grounded in accordance with all local codes and ordinances.
- Do not modify the plug provided if it will not fit the outlet. Have the proper outlet installed by a qualified electrician.
- Improper connection of the equipment-grounding conductor can result in a risk of electric shock. The conductor with insulation that is green on the outside (with or without yellow stripes) is the equipment-grounding conductor. If repair or replacement of the electric cord or plug is necessary, do not connect the equipment-grounding conductor to live terminal.
- Check with a qualified electrician or service personnel if the grounding instructions are not completely understood, or if in doubt as to whether the tool is properly grounded.
- Use only 3-wire extension cords that have 3-prong grounding plugs and 3-pole receptacles that accept the tool's plug.
- Repair or replace damaged or worn cord immediately.
- To avoid the possibility of the appliance plug or receptacle getting wet, position tile saw to one side of a wall-mounted receptacle to prevent water from dripping onto the receptacle or plug. The user should arrange a "drip loop" in the cord connecting the saw to a receptacle. The "drip loop" is that part of the cord below the level of the receptacle, or the connector if an extension cord is used, to prevent water from traveling along the cord and coming in contact with the receptacle.
- If the plug or receptacle does get wet, don't unplug the cord. Disconnect the fuse or circuit breaker that supplies power to the tool. Then, unplug and examine for presence of water in the receptacle.
- Only UL-listed extension cords should be used with this product.
- Improper use of extension cords may cause inefficient operation of your tool, which can result in overheating. Be sure your extension cord is rated to allow sufficient current flow to the motor. For the proper gauge for your tool, please see chart.
- Do not let your fingers touch the terminals of plug when installing or removing the plug to or from the outlet.
- If not properly grounded, this power tool can incur the potential hazard of electrical shock particularly when used in damp locations or in proximity to plumbing. If an electrical shock occurs, there is the potential of a secondary hazard, such as your hands contacting the grinder tool.

This tool is intended for use on a circuit that has an outlet that looks like the one illustrated in Figure (A). The tool has a grounding plug that looks like the plug illustrated in Figure (A). A temporary adapter, which looks like the adapter illustrated in Figure (B) and (C), may be used to connect this plug to a 2-pole receptacle as shown in Figure (B) if a properly grounded outlet can be installed by a qualified electrician. The green-colored rigid prongs extending from the adapter must be connected to a permanent ground such as a properly grounded outlet box.



WARNING

FOR YOUR OWN SAFETY READ INSTRUCTION MANUAL BEFORE OPERATING SAW.

- Wear eye protection.
- Use splash hood for every operation for which it can be used.
- Disconnect saw before servicing, when changing cutting wheels, and cleaning.
- Use tool only with smooth-edge cutting wheels free of openings and grooves.
- Replace damaged cutting wheel before operating.
- Do not fill water bath above water fill line.

USE PROPER EXTENSION CORD. Make sure your extension cord is in good condition. When using an extension cord, be sure to use a cord heavy enough to carry the current your product will draw. An undersized cord will cause a drop in line voltage, resulting in loss power and overheating. Table below shows the correct size to use depending on cord length and nameplate ampere rating. If in doubt, use the next heavier gauge. The smaller the gauge number, the heavier the cord.

| MINIMUM GAUGE FOR CORD | 18 AWG | 16 AWG | 16 AWG | 14 AWG |
|------------------------------|--------|--------|--------|--------|
| TOTAL LENGTH OF CORD IN FEET | 25 | 50 | 100 | 150 |

STATE-OF-THE-ART FEATURES

- ½-HP motor, 4,000 RPM
- Automatic thermal overload protection protects saw from power surges and motor overheating.
- Specially designed mounting provides easy blade change.
- Fiberglass-impregnated plastic water tray withstands even the toughest punishment. Easy to remove and install.
- The adjustable rip guide allows both 90° and 45° cuts.
- Rip cut up to 16" square tiles and diagonal cut up to 10" tiles.
- Easily removable for cleaning and transportation.
- Lightweight for easy setup and maintenance.

ELECTRICAL / MOTOR SPECIFICATIONS

- Horsepower ½ H.P. Saw-duty rated
- Volts 115V
- Amps 5.8
- RPM 4,000
- Cycle 60
- Phase 1
- Connect saw as close as possible to power source.

EXTENSION CORDS: When using an extension cord, ensure all cords are no smaller than #12 gauge, rated at a 20 AMP minimum, and equipped with 3-prong plugs. Use of anything smaller may result in overheating or burn out of the motor. It is recommended to have an electrician check the voltage at the saw motor to ensure proper voltage to run the saw efficiently and safely.

UNPACKING, ASSEMBLY & SETUP

CAUTION: FOLLOW ALL OF THE ASSEMBLY & INSTALLATION INSTRUCTIONS COMPLETELY BEFORE CONNECTING THE SAW TO A POWER SOURCE OR TURNING THE MOTOR ON.

Carefully open the container and remove all saw components and packing materials. Ensure that you have checked each item with the exploded view on Page ?? before discarding the container or packing materials. The contents of the container are as follows:

- | | | | |
|-------------------------|-------------------------|---|----------------------|
| • Cutting Head Assembly | • 45° / 90° Rip Guide | • Water Pump | • Saw-Frame Assembly |
| • Close Wrench | • 7" Saw Blade | • Fiberglass-Impregnated Plastic Water Tray | |
| • Owner's Manual | • Blade Guard Accessory | | |

The following pages illustrate step by step the installation of various components and operation of the saw. Read instructions completely before operating this saw!

CUTTING-HEAD ASSEMBLY INSTALLATION

CAUTION: FOLLOW ALL OF THE ASSEMBLY & INSTALLATION INSTRUCTIONS COMPLETELY BEFORE CONNECTING THE SAW TO A POWER SOURCE OR TURNING THE MOTOR ON.

1. Remove the motor mount block and motor from the packaging, loosen the wing screws enough to permit the motor mount to fit on the frame upright post.
2. Set the motor mount block on the frame upright post, then tighten the 2 wing screws to hold the motor block securely in place. (Diagram 1)

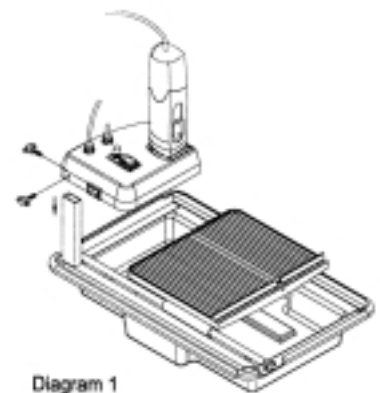


Diagram 1

BLADE & BLADE GUARD INSTALLATION

1. Remove the blade guard and set it aside in the cutting head.
2. Raise the blade guard to the highest level and tighten the blade guard wing screw. Then, remove the blade shaft nut and outer flange.
3. Place the blade onto the shaft, pushing it up against the inner flange. Make sure the directional arrow is pointing in the direction of rotation.
4. Replace the outer flange and blade shaft nut. With one hand, hold the blade and tighten the blade shaft nut with your free hand. Make certain the nut is firmly tightened with wrench provided. **DO NOT OVER-TIGHTEN!**
5. Lower the blade guard into position and tighten the wing screw.
6. To remove the blade, reverse the installation steps. (See Diagram 2)

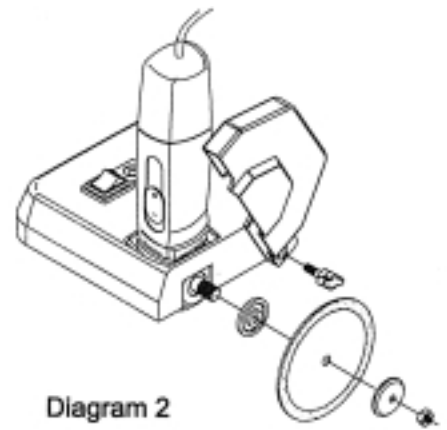


Diagram 2

WATER PUMP INSTALLATION

1. Remove the water pump from its box and ensure that it is not cracked or damaged in any way (See Diagram 3)
2. Attach the end of the plastic tubing, hanging down from the blade guard, to the water pump nipple.
3. Place the water pump in the rear of the water tray on its side, with the water pump nipple also on its side.
4. Next, fill the water tray with the water so that its level is higher than the water intake nozzle.
5. Keep the power cord out of the water and plug it into the 3-prong receptacle on the back of the cutting head assembly. The pump is activated by the ON/OFF switch on the electric motor.

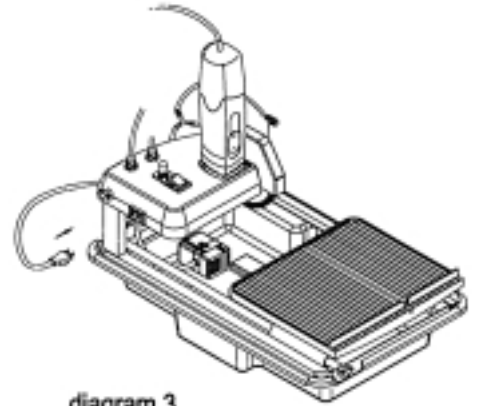


diagram 3

NOTE: WATER PUMP SAFETY GUIDELINES & MAINTENANCE INSTRUCTIONS ARE LISTED BELOW. PLEASE READ CAREFULLY AND COMPLETELY.

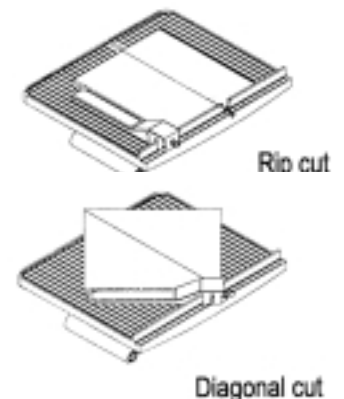
WATER PUMP SAFETY GUIDELINES

1. The pump is equipped with a grounding-type attachment plug. Be sure to connect the plug to a properly grounded grounding type receptacle to reduce the risk of electric shock.
2. When assembling & installing the water pump system, be sure to fully support the pump and piping to reduce the chance of pump failure or damage.
3. Never handle the pump by the cord, with wet hands or when standing on a wet surface.
4. Do not use the pump to pump anything other than water, or other compatible liquids. Never use to pump gasoline, kerosene, or other combustible or corrosive liquids.
5. Should pump fail, always disconnect from power source before handling pump or attempting to unclog or service the pump in any way.
6. Never let the pump operate dry. It is self-cooled by pumping liquid. Dry use will cause pump damage and may cause the motor to fail.

CUTTING TABLE

MARKED IN INCHES AND CENTIMETERS FOR ACCURATE CUT DIMENSIONS. STEPS FOR POSITIONING 45° / 90° RIP GUIDE:

1. Set the rip guide by positioning it on the desired dimension and tighten the threaded knob on the rip guide. Make sure rip guide is firmly tightened to avoid slippage.
2. The rip guide can be used for 90° rip cuts and 45° rip cuts from both the left and right side! (Notice the straight and 45° angled slits on the bottom of the rip guide in the diagram.)
3. After the rip guide is positioned for the desired cut, place material flush against the rip guide and the measurement rail. For 45° rip cuts, place the corner of material in the open slot of the measurement rail.
4. Now you are ready to make your cut.



SAW OPERATION

1. Make sure you have read this manual completely before operating your saw.
 2. NOTE: The saw motor has two ON/OFF switches. Both switches must be "ON" for your saw to operate.
 - One switch is located on the motor housing. Push this switch to the "DOWN" and "LOCKED" position.
 - The second switch is located on the motor mounting block, enclosed in a protective housing. This rocker switch has "I" and "O" markings. Press the "I" to turn the switch "ON". This switch should be used as the primary ON/OFF switch for saw operation.
 3. Make sure that there is sufficient water in the water pan to cover the inlet on the water pump, and that water is being supplied to the saw blade before attempting to cut any material.
 4. Make sure your material is positioned properly on the saw table before beginning your cut. Feed your material slowly into the blade. DO NOT force material. The blade will cut smoother and faster if these steps are followed.
 5. ALWAYS practice "SAFETY FIRST". Wear eye safety goggles, a dust mask and gloves when operating this saw. Discard cracked, bent, chipped, or damaged blades.
-

SAW MAINTENANCE

WARNING: DO NOT SERVICE, CLEAN OR MAINTAIN THE SAW WITHOUT FIRST TURNING OFF THE MOTOR AND UNPLUGGING THE SAW FROM ITS POWER SOURCE. FAILURE TO DO SO MAY RESULT IN SERIOUS INJURY TO THE OPERATOR.

1. For longest life and best performance, clean the saw after every use.
 2. Wipe off all exterior surfaces and keep the cutting table clean and free to tile chips and debris.
 3. Wipe off both the guide bars and the rollers on the cutting table.
 4. Place light machine oil on the guide bar to facilitate smooth travel of the linear guide assembly.
 5. The guide bars are specially treated to give you years of operation.
 6. Always check the blade for cracks or signs of fatigue.
-

DOs & DON'Ts FOR DIAMOND BLADES**DOs**

1. Inspect blades daily for cracks or uneven wear. Discard cracked, chipped or bent blades!
2. Always use manufacturer's recommendation for matching the right blade with the right material being cut.
3. Inspect the arbor shaft for uneven wear before mounting the blade.
4. Always use blades with the correct arbor size on a compatible arbor shaft.
5. Ensure the blade is mounted with the rotation arrow in the proper direction and is securely tightened with the wrench.
6. Always wear the proper safety equipment at all times when operating the saw. Wear goggles and dust mask at all times when operating saw.
7. Periodically check the blade for cracks or bond fatigue.
8. Always have a continuous flow of water on both sides of the blade before cutting any material.

DON'Ts

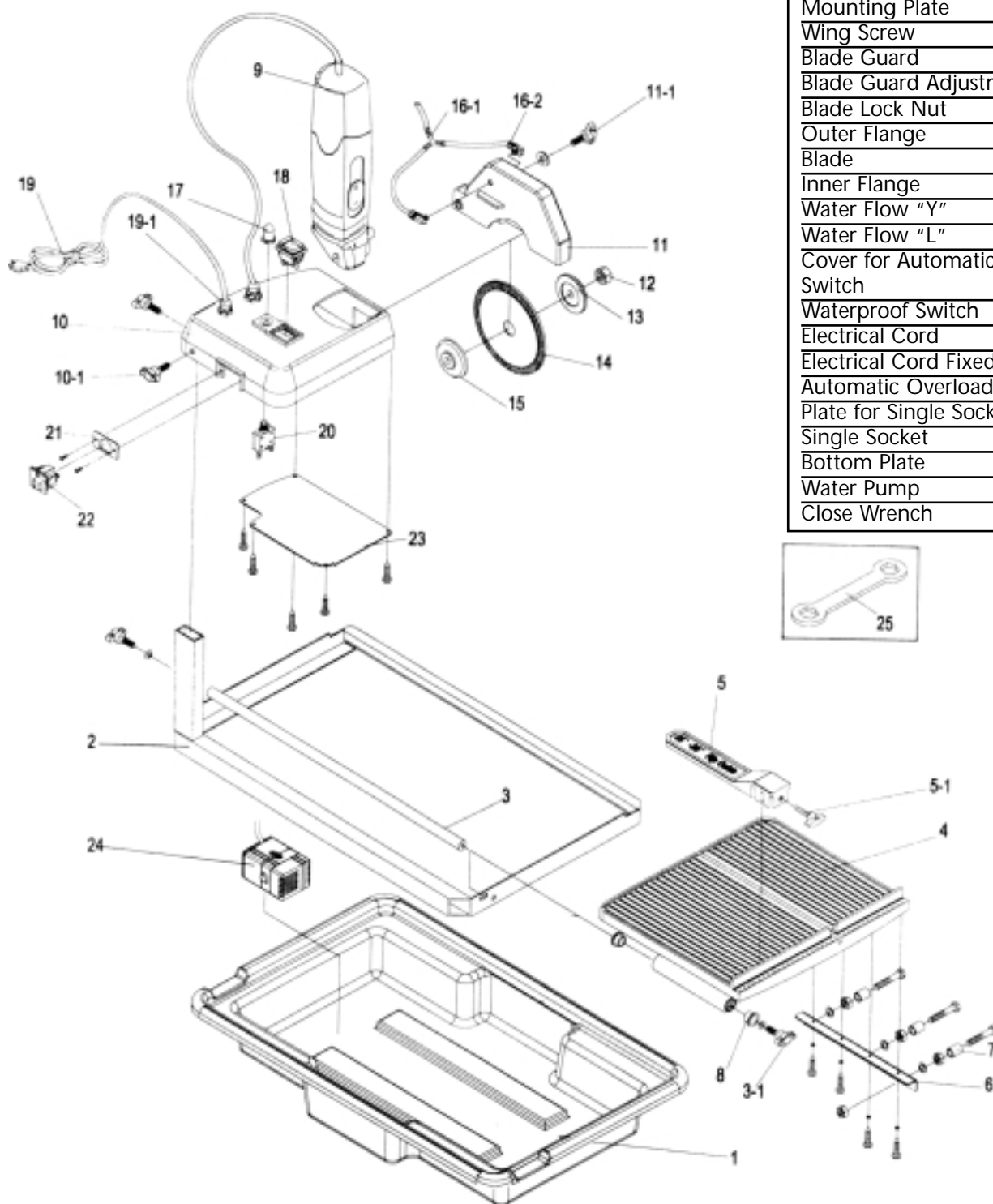
1. Do not operate the saw without all safety guards in position.
2. Do not operate the saw with blades larger or smaller than 7".
3. Do not cut dry with blades marked "Use Wet".
4. Do not exceed maximum RPMs recommended by the blade manufacturer.
5. Do not force the material into the blade. Let the blade cut at its own speed.
6. Do not cut material not recommended by the blade manufacturer.



DIAGRAM OF WET SAW

60007 7" WET SAW PARTS LIST

| DESCRIPTION | No. |
|-------------------------------------|------|
| Water Tray Assembly | 1 |
| Frame Assembly | 2 |
| Roller Guide Bar | 3 |
| Cutting Table | 4 |
| 45°, 90° Rip Guide | 5 |
| 45°, 90° Rip Guide Adjustment Knob | 5-1 |
| L-Shaped Plate | 6 |
| Angle Bar Rollers Set | 7 |
| Metal Bushing (Set of 12) | 8 |
| Angle Grinder | 9 |
| Mounting Plate | 10 |
| Wing Screw | 10-1 |
| Blade Guard | 11 |
| Blade Guard Adjustment Knob | 11-1 |
| Blade Lock Nut | 12 |
| Outer Flange | 13 |
| Blade | 14 |
| Inner Flange | 15 |
| Water Flow "Y" | 16-1 |
| Water Flow "L" | 16-2 |
| Cover for Automatic Overload Switch | 17 |
| Waterproof Switch | 18 |
| Electrical Cord | 19 |
| Electrical Cord Fixed Head | 19-1 |
| Automatic Overload Switch | 20 |
| Plate for Single Socket | 21 |
| Single Socket | 22 |
| Bottom Plate | 23 |
| Water Pump | 24 |
| Close Wrench | 25 |



Free Manuals Download Website

<http://myh66.com>

<http://usermanuals.us>

<http://www.somanuals.com>

<http://www.4manuals.cc>

<http://www.manual-lib.com>

<http://www.404manual.com>

<http://www.luxmanual.com>

<http://aubethermostatmanual.com>

Golf course search by state

<http://golfingnear.com>

Email search by domain

<http://emailbydomain.com>

Auto manuals search

<http://auto.somanuals.com>

TV manuals search

<http://tv.somanuals.com>