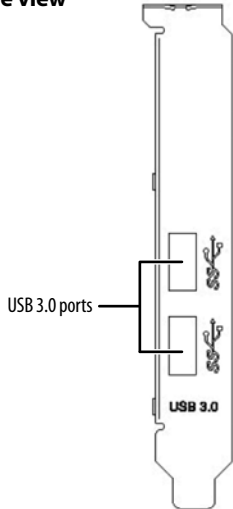
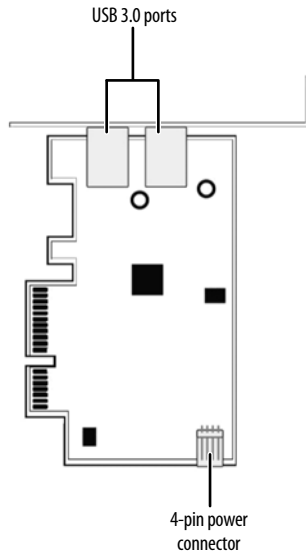


## Express card components

Edge view



Side view



## General description

Congratulations on your purchase of the RF-P2USB3 dual-port USB 3.0 PCI Express Card adapter. The USB Express Card is ideal for external storage devices, digital cameras, web cams, networking, video devices, card readers, external DVD writers, MP3 players, and all other USB devices.

## Package contents

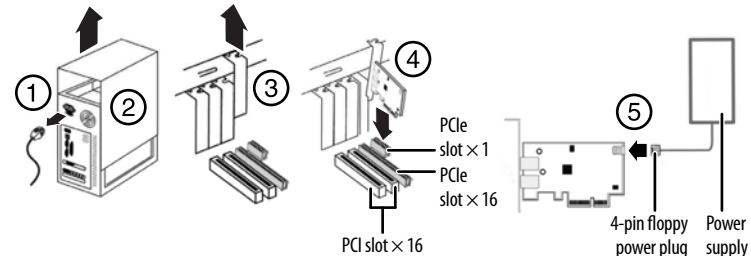
- USB 3.0 PCI Express Card
- Driver CD
- Short backplate
- *Quick Setup Guide*

## Minimum system requirements

- PCI Express-enabled system with an available PCI Express slot. (Recommend PCI Express 2.0)
- Windows® XP, Windows® Vista, or Windows® 7

## Installing the hardware

- 1 Turn off your computer and unplug the power cord and all cables.
- 2 Remove your computer's case cover. See your computer's user guide for information about removing the cover.
- 3 Locate an available PCI Express slot, remove the screw that secures the backplate (the small piece of metal that covers the opening for the PCI card on the back panel of your computer), and then remove the backplate. If you are using slim desktop computers, change to short backplate.
- 4 Carefully insert the adapter into the PCIe x1 slot, seating it firmly into the slot. Do not touch the metal connector on the adapter.
- 5 Connect an available floppy 4-pin power plug from your PC's power supply to the adapter card's 4-pin power connector.



- 6 Secure the adapter to the case using the screw you removed from the backplate.
- 7 Reinstall your computer's case cover.
- 8 Plug in the power cord and other cables, and then turn on your computer.

## To install the Windows driver:

**Note:** The USB 3.0 driver is only for the Windows operating system. It does not support MAC and Linux operating systems.

- 1 Save all files and close all programs, then insert the included driver CD into your optical drive. The driver home page opens.
- 2 Click **Install Driver**. The installation wizard opens.
- 3 Click **Next**, then follow the on-screen instructions to install the driver.

## FCC statement

This device complies with part 15 of the FCC Rules. Operation is subject to the following two conditions: (1) This device may not cause harmful interference, and (2) this device must accept any interference received, including interference that may cause undesired operation.

## ICES-003

This Class B digital apparatus complies with Canadian ICES-003.  
Cet appareil numérique de la classe B est conforme à la norme NMB-003 du Canada.

## One-year limited warranty

Visit [www.rocketfishproducts.com](http://www.rocketfishproducts.com) for details.

## Contact Rocketfish:

For customer service please call 1-800-620-2790

[www.rocketfishproducts.com](http://www.rocketfishproducts.com)

Distributed by Best Buy Purchasing, LLC

7601 Penn Avenue South, Richfield, Minnesota, 55423-3645 USA

© 2010 BBY Solutions, Inc. All rights reserved. ROCKETFISH is a trademark of BBY Solutions, Inc. All other products and brand names are trademarks of their respective owners.

## Free Manuals Download Website

<http://myh66.com>

<http://usermanuals.us>

<http://www.somanuals.com>

<http://www.4manuals.cc>

<http://www.manual-lib.com>

<http://www.404manual.com>

<http://www.luxmanual.com>

<http://aubethermostatmanual.com>

Golf course search by state

<http://golfingnear.com>

Email search by domain

<http://emailbydomain.com>

Auto manuals search

<http://auto.somanuals.com>

TV manuals search

<http://tv.somanuals.com>