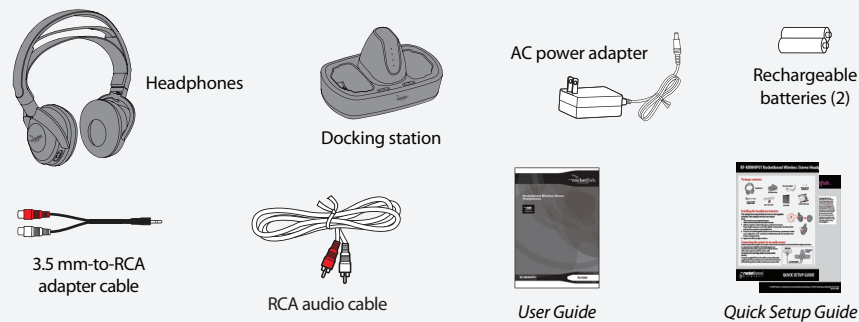


RF-RBWHP01 Rocketboost Wireless Stereo Headphones



Package contents



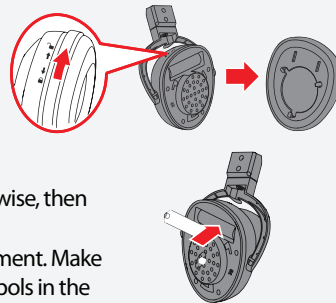
Installing the headphone batteries

The headphones are powered by two AA rechargeable batteries. Each earpiece houses one battery.

Notes:

- Do not install non-rechargeable batteries.
- Make sure that all batteries are installed correctly.

- 1 With an earpiece cushion facing you, unlock and remove left and right earpiece cushions by slightly rotating them clockwise, then pulling them away from the headphones.
- 2 Insert one AA rechargeable battery into each battery compartment. Make sure to align the + and - symbols on the batteries with the symbols in the battery compartments.
- 3 Replace the left and right cushions.



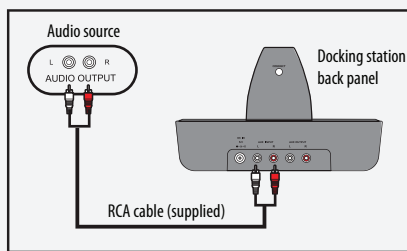
Connecting the system to an audio source

Caution: To prevent damage to your system, make sure all components are turned off before making connections.

In a typical user installation, the docking station is connected to the audio output of a TV. Other devices with audio outputs could be used as well.

To connect the docking station to your audio source:

Using the supplied RCA audio cable, connect the audio output jacks of your audio source to the AUX INPUT jacks of the docking station. Make sure that you connect the



same color jacks together (the white to the white and the red to the red).

Note: If your audio source has only a 3.5 mm "phones" or "line out" jack, use the supplied 3.5 mm-to-RCA adapter cable.

Connecting the AC adapter to the docking station

Caution: To avoid risk of fire and to prevent damage, only use the AC adapter supplied with your wireless headphones. Make sure that the power supply outlet matches the AC adapter's 120V before making the connection.

- 1 Connect the AC adapter connector to the docking station's **DC IN** jack.
- 2 Connect the AC adapter plug to an AC power outlet. The **STANDBY** indicator lights red steadily when the docking station is plugged in.

Caution: Plug the AC adapter into the power outlet only after all other connections are completed.

Charging the headphones

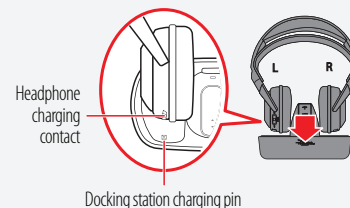
Important: Before using the wireless headphones for the first time, make sure the batteries are fully charged for at least 16 hours. This will help provide a longer operating lifetime for the batteries.

Place the headphones onto the docking station. Make sure that the headphone charging contacts and the docking station charging pins make contact.

- The docking station charging indicator turns red to indicate the headphones are charging.
- When the headphones are fully charged (which takes about eight to nine hours), the docking station charging indicator turns green.

Notes:

- The batteries will last up to ten hours with continuous use (depending on the headphone volume level and distance from the docking station).
- The headphones can be charged even if the docking station or headphones are turned off.



Turning on the system

- 1 Set the **POWER** switch on the left earpiece of headphones to **ON**.
- 2 Press the **POWER** button on the docking station.

Establishing communication

The headphones and docking station must be "joined" or wirelessly connected to each other so that audio can be sent from the docking station to the headphones.

Since the headphones and docking station are pre-joined at the factory, you can skip this step and go to the *Listening through the headphones* step. Follow this procedure only if you need to rejoin the headphone and docking station. For information on how to use this product with an existing Rocketboost network, see your *User Guide*.

To join the headphones to the docking station:

- 1 Set the **HUB STATUS** switch on the docking station to **ENABLE** if this is your first Rocketboost product set.
 - The power indicators turn green when the **HUB STATUS** switch is set to **ENABLE**.
 - The power indicators turn blue when the **HUB STATUS** switch is set to **DISABLE**.
- 2 Press and hold the **CONNECT** button on the docking station for more than three seconds to put it into joining mode. The power indicator starts blinking rapidly and the unit will stay in joining mode for 30 seconds.
- 3 Press and hold the **CONNECT** button on the headphone for more than three seconds so the docking station and headphone enter joining mode.
 - The power indicator lights steadily if the joining was successful.
 - The power indicator blinks slowly if the joining was not successful.

For more information, see your *User Guide*.

Listening through the headphones

- 1 Set the headphone's volume level to the minimum.
- 2 Turn on the headphones and docking station. Make sure that your docking station and headphones are wirelessly "joined".

The power indicators light steadily if the docking station and headphones are joined and blink slowly if they are not. If they are not joined, see "Establishing Communication" above or in the *User Guide*.
- 3 Put your headphones on your head. Adjust the angles of the left and right ear pieces until you feel comfortable.
- 4 Turn on your audio source and begin playback.

If there are multiple sources in the Rocketboost network, press the **SOURCE** button on the headphones to find the source you want to listen to. The TX indicator on the docking station (if it is a hub) blinks several times, indicating that the current audio source is changing.
- 5 Adjust the headphone volume to your normal listening level.

Caution: Continuous use at high volume may permanently damage your hearing.

Note: If the system is connected to an A/V receiver with an external amplifier, turn off the amplifier to prevent hearing sound from the amplifier speakers.

Turning off the system

- 1 Set the **POWER ON/OFF** switch located on the headphone's left earpiece to **OFF**.
- 2 Press and hold the **POWER** button on the docking station. The power indicator on the docking station goes off.

Rocketboost network notes:

Every Rocketboost network must contain one hub device, which helps devices join the network. The network can have only one hub, which you can enable using the hub switch on the back of all Rocketboost senders and sender/receivers. If this is your first Rocketboost product, you should make the docking station the hub, if you already have Rocketboost products, you should disable hub mode on the docking station.

Important: Hub devices must always have power for your network to operate. The hub device can be in standby (power-saving) mode, but must stay plugged in.



Free Manuals Download Website

<http://myh66.com>

<http://usermanuals.us>

<http://www.somanuals.com>

<http://www.4manuals.cc>

<http://www.manual-lib.com>

<http://www.404manual.com>

<http://www.luxmanual.com>

<http://aubethermostatmanual.com>

Golf course search by state

<http://golfingnear.com>

Email search by domain

<http://emailbydomain.com>

Auto manuals search

<http://auto.somanuals.com>

TV manuals search

<http://tv.somanuals.com>