

Nano Laptop Laser Mouse

RF-NANMSE

User Guide

Rocketfish RF-NANMSE Nano Laptop Laser Mouse

Contents

Introduction	3
Features	3
Using the mouse.....	12
Maintaining	20
Troubleshooting	20
Specifications.....	21
Legal notices	22
One-year limited warranty.....	25

Introduction

Congratulations on your purchase of the Rocketfish RF-NANMSE nano laptop laser mouse. This mouse represents the state of the art in wireless mouse design and is designed for reliable and trouble-free performance.

Features

- Mini dongle
- 2.4 GHz wireless connection
- Tilt/scroll wheel
- Five mouse buttons
- Excellent performance working range of more than 32.8 feet (10 meters) (with no interference)
- Dual-color status LED indicator

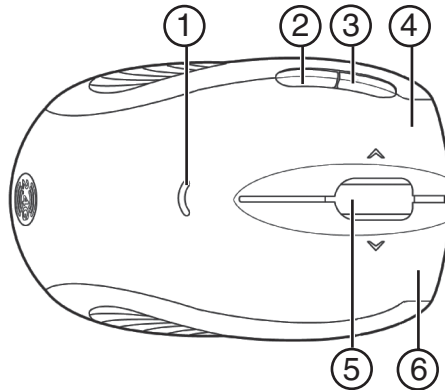
Package contents

- Mouse
- Receiver
- Installation CD (includes software and *User Guide*)
- Quick Setup Guide
- AA battery

System requirements

- At least one USB port (USB 2.0 or 1.1)
- CD drive
- Operating system: Windows® 2000, Windows® XP with Service Pack 1 or higher, Windows Vista®, or Windows 7

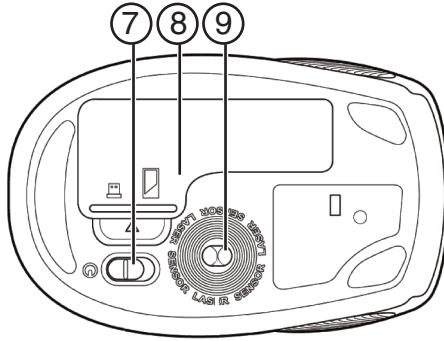
Top



1	LED indicator	Indicates the current mouse state. <ul style="list-style-type: none"> • Off—The mouse is turned off. • Green—The mouse is turned on and the battery has a charge. • Flashing red—The battery charge is low and the battery needs to be replaced.
2	Button B	Press to go to the previous page in a Web browser.
3	Button A	Press to go to the next page in a Web browser.
4	Left button	Press to perform standard left mouse actions such as selecting items and opening programs.
5	Scroll wheel	Roll the scroll wheel to move the screen image up or down, and tilt the scroll wheel to move the screen image left or right. If you press down on the scroll wheel, a four-way icon appears on the screen. Then move the mouse up, down, left, or right to scroll.
6	Right button	Press to perform standard right mouse actions such as opening popup menus or viewing help information.

Note: The A and B buttons are programmable. You need to install the mouse driver to program the buttons and to use the full functionality of the mouse. For more information, see “Installing the mouse driver and software” on page 10.

Bottom



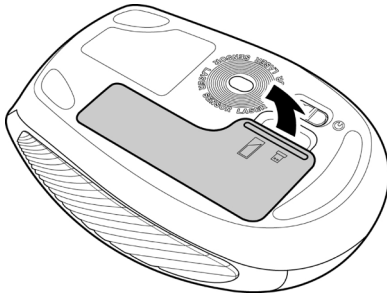
7	Power button	Turns the mouse on or off.
8	Battery compartment	Provides storage for the dongle and battery.
9	Laser sensor	Detects mouse movements and sends signals to the laptop to move the mouse pointer on the screen.

Setting up the mouse

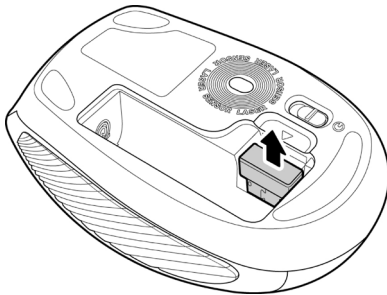
Installing the battery

To install the battery:

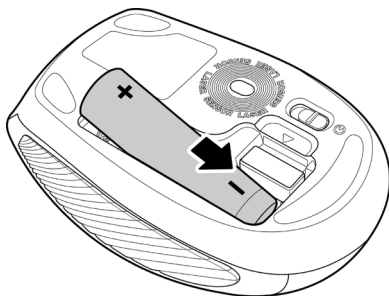
- 1 Press the tab on the battery compartment cover, then lift the cover away from the mouse.



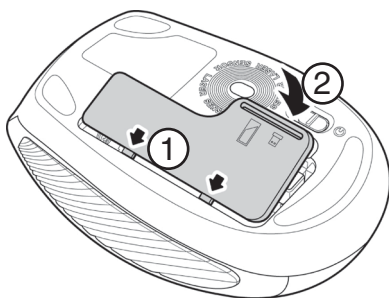
- 2 Pull the dongle out of the battery compartment.



- 3 Insert one AA battery into the battery compartment. Make sure that the + and - symbols on the battery match the + and - symbols in the battery compartment.



- 4 Replace the battery compartment cover.



Setting up the mouse

To set up the mouse:

- 1 Plug the USB dongle into a USB port on the laptop.



- 2 Slide the power button on the bottom of the mouse down to turn on the mouse. The laptop detects the mouse.

Installing the mouse driver and software

To use advanced functions, such as dynamic search and magnifier, you need to install the mouse driver and software.

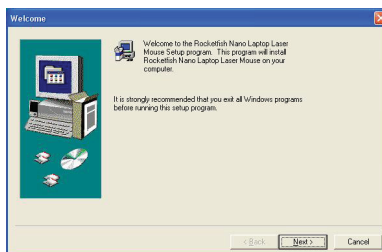
Note: The following instructions are based on the Windows® XP operating system.

To install the mouse driver and software:

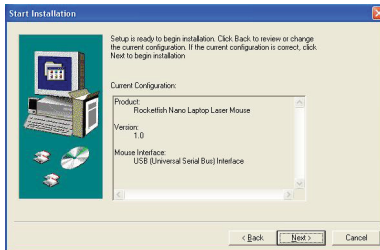
- 1 Make sure that you have connected the dongle, installed the battery, and turned on the mouse.
- 2 Insert the provided installation CD in the CD drive on the laptop. The installation program should start automatically. If it does not start automatically, open Windows Explorer, browse the CD, then double-click **autorun.exe**. The *Rocketfish Nano Laptop Laser Mouse* screen opens.



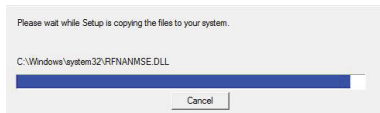
- 3 Click **Install Mouse Driver**. The *Welcome* screen opens.



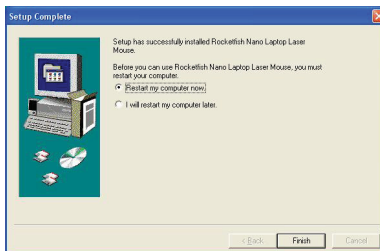
- 4 Click **Next**. The *Start Installation* screen opens.



- 5 Click **Next**. A installation progress bar appears.



When the installation is complete, the *Setup Complete* screen opens.

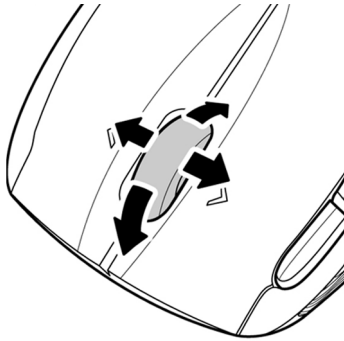


- 6 Click **Finish**.

Using the mouse

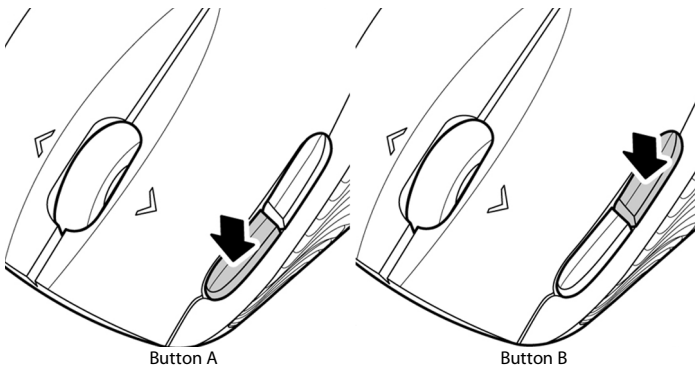
To use the mouse:

- 1 Press the left or right mouse buttons to perform standard left and right mouse clicks.
- 2 Move the scroll wheel to move the screen image up, down, left, or right.




Tip: You can also scroll the screen by sliding your mouse instead of using the scroll wheel. To do this, press down on the scroll wheel. A four-way icon appears on the screen. Move your mouse up, down, left, or right to scroll.

- 3 Press button A to go to the next page in a Web browser or press button B to go to the previous page in a Web browser.

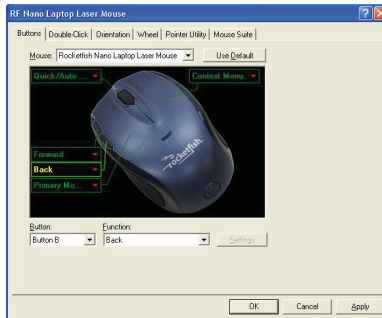


Configuring the mouse

To configure the mouse:

- Double-click the mouse icon  on the system tray to open the mouse program, then click a tab to adjust a mouse function. You can select any of the following tabs:
 - **Buttons**—See “Configuring mouse buttons” on page 14.
 - **Double-Click**—See “Adjusting the double-click speed” on page 15.
 - **Orientation**—See “Adjusting the orientation” on page 16.
 - **Wheel**—See “Adjusting the wheel settings” on page 17.
 - **Pointer Utility**—See “Adjusting pointer behavior” on page 18.
 - **Mouse Suite**—See “Hiding the system tray’s mouse icon” on page 19.

Configuring mouse buttons



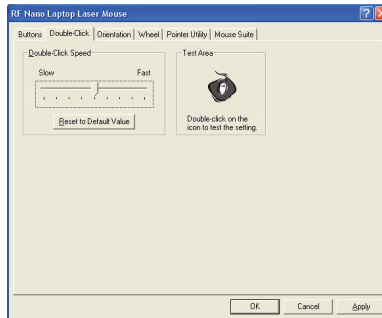
To configure the buttons:

- 1 Click the **Button** list arrow to open the list of buttons, then click the button you want to configure.
- 2 Click the **Function** list arrow to open the list of functions, then click the function you want to assign to the button.
- 3 To restore default button functions, click **Use Default**. The default settings for the mouse buttons are:

Left button	Primary mouse button
Right button	Context menu
Wheel button	Quick/Auto scroll
Button A	Forward
Button B	Back

- 4 Click other tabs to make more adjustments, or click **OK** to save your selections and close the program.

Adjusting the double-click speed

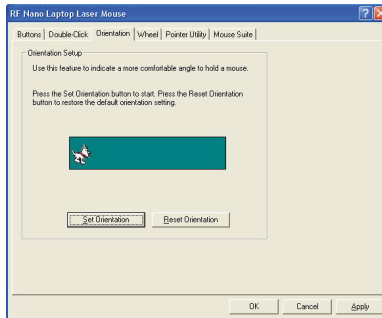


To adjust the double-click speed:

- 1 To adjust double-click speed, drag the slider.
- 2 To test the click speed, double-click the **Test Area** icon.
- 3 To restore to default settings, click **Reset to Default Value**.
- 4 Click other tabs to make more adjustments, or click **OK** to save your selections and close the program.

Adjusting the orientation

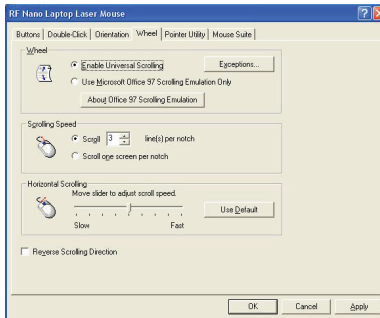
Use this tab to adjust the angle at which you use the mouse.



To adjust the orientation:

- 1 Click **Set Orientation** to activate orientation setup, then use the on-screen pointer to follow the dog as it moves around.
- 2 To restore the default orientation settings, click **Reset Orientation**.
- 3 Click other tabs to make more adjustments, or click **OK** to save your selections and close the program.

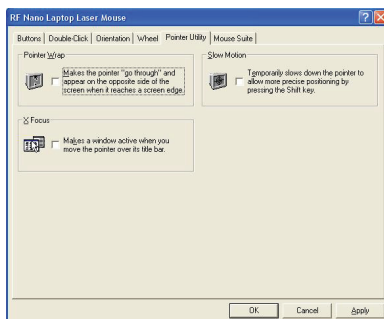
Adjusting the wheel settings



To adjust the wheel settings:

- 1 To select the wheel scrolling method, click:
 - **Enable Universal Scrolling**—Uses common scrolling functions.
 - **Use Microsoft Office 97 Scrolling Emulation Only**—Uses Microsoft Office 97 scrolling emulation.
- 2 To specify scrolling exceptions, click **Exceptions**.
- 3 To adjust vertical scrolling speed, click:
 - **Scroll X line(s) per notch**—Selects the number of lines to scroll when the scroll wheel is moved one notch. Click the up or down arrow keys to specify the number of lines.
 - **Scroll one screen per notch**—Scrolls an entire screen when the scroll wheel is moved one notch.
- 4 To adjust the horizontal scrolling speed, drag the slider.
- 5 To restore to default scrolling speed, click **Use Default**.
- 6 To reverse scrolling direction, click **Reverse Scrolling Direction**.
- 7 Click other tabs to make more adjustments, or click **OK** to save your selections and close the program.

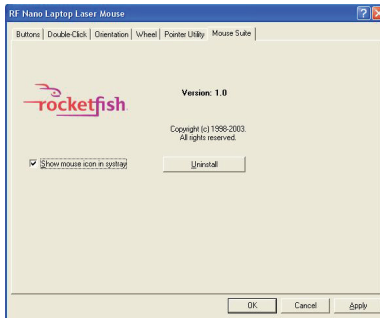
Adjusting pointer behavior



To adjust pointer behavior:

- 1 Click the pointer options. You can select:
 - **Pointer Wrap**—The pointer goes to the opposite side of the screen when it reaches the screen edge.
 - **X Focus**—Activates a window when the pointer moves over the title bar.
 - **Slow Motion**—Slows down the pointer when the **Shift** key is pressed for a more precise positioning.
- 2 Click other tabs to make more adjustments, or click **OK** to save your selections and close the program.

Hiding the system tray's mouse icon



To hide the system tray's mouse icon:

- Uncheck **Show mouse icon in systray**, then click **OK** to save changes and close application.

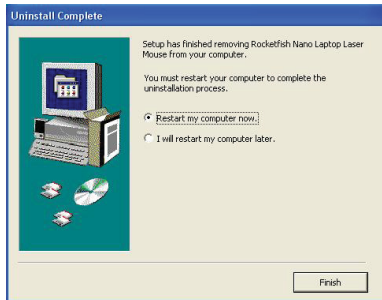
Uninstalling the mouse driver and software

To uninstall the mouse driver and software:

- 1 Unplug the dongle.
- 2 Click **Start, All Programs, Rocketfish Nano Laptop Laser Mouse**, then click **Uninstall Rocketfish Nano Laptop Laser Mouse Driver**. A message asks if you are sure you want to uninstall the driver.
- 3 Click **Yes** to continue. The *Remove Programs From Your Computer* screen opens and displays the progress.



- 4 When the uninstallation is complete, click **OK** to continue. The *Uninstall Complete* screen opens.



- 5 Click **Finish**. Your laptop restarts and the uninstallation is complete.

Maintaining

To clean the mouse:

- Wipe the surface and the optical sensor with a soft, lint-free cloth slightly moistened with water.

Troubleshooting

If you experience any problems with the mouse, check the following:

- Make sure that your laptop meets the system requirements.
- Make sure that the battery in the laser mouse is installed correctly. Make sure the polarity of the battery corresponds with the polarity symbols inside the battery compartment.
- When the mouse LED lights red, the battery power is low. Replace the battery with a new one.
- If the laser mouse fails to work, check the USB port to see if the dongle is correctly connected.
- Only use the mouse on a clean, flat, non-slippery surface to ensure smooth and accurate cursor action.

For further assistance, contact your dealer.

Specifications

Specifications subject to change without notice.

Dimensions H × L × W	Mouse: 1.49 × 3.78 × 2.37 inches (37.78 × 95.92 × 60.23 mm) Dongle: 0.26 × 0.74 × 0.59 inches (6.60 × 18.80 × 15.00 mm)
Resolution	1200 dpi
Tracking speed	Maximum 30 inch/sec (76.2 cm/sec)
Weight	Mouse (without battery): 2.12 oz. (60 g) Dongle: 0.11 oz. (3 g)
Buttons	4 buttons with tilt scroll wheel
Compatibility	Windows 2000 Windows XP Windows Vista 32-bit or 64-bit Windows 7
Operating temperature	32°F to 104°F (0°C to 40°C)
Storage temperature	-40°F to 140°F (-40°C to 60°C)
Operating humidity	90% RH or less
Storage humidity	90% RH or less
Battery	AA (1)
Regulations and certifications	EMI, ESD, RS, EFT, FCC, IC, IEC 60825-1

Legal notices

FCC Statement

This equipment has been tested and found to comply with the limits for a Class B digital device, pursuant to part 15 of the FCC Rules. These limits are designed to provide reasonable protection against harmful interference in a residential installation. This equipment generates, uses and can radiate radio frequency energy and, if not installed and used in accordance with the instructions, may cause harmful interference to radio communications. However, there is no guarantee that interference will not occur in a particular installation. If this equipment does cause harmful interference to radio or television reception, which can be determined by turning the equipment off and on, the user is encouraged to try to correct the interference by one or more of the following measures:

- Reorient or relocate the receiving antenna.
- Increase the separation between the equipment and receiver.
- Connect the equipment into an outlet on a circuit different from that to which the receiver is connected.
- Consult the dealer or an experienced radio/ TV technician for help.

This device complies with Part 15 of the FCC Rules.

Operation is subject to the following two conditions:

- 1 This device may not cause harmful interference.
- 2 This device must accept any interference received, including interference that may cause undesired operation.

FCC warning

Changes or modifications not expressly approved by the party responsible for compliance with the FCC Rules could void the user's authority to operate this equipment.

DHHS and FDA safety certification

This product is made and tested to meet safety standards of the FCC, requirements and compliance with safety performance of the U.S. Department of Health and Human Services, and also with FDA Radiation Performance Standards 21 CFR Subchapter J.

Important notice

FCC Radiation Exposure Statement: This equipment complies with FCC radiation exposure limits set forth for an uncontrolled environment. End users must follow the specific operating instructions for satisfying RF exposure compliance. This transmitter must not be co-located or operating in conjunction with any other antenna or transmitter. IC Statement Operation is subject to the following two conditions:

- 1 This device may not cause harmful interference and
- 2 This device must accept any interference, including interference that may cause undesired operation of the device.

Canada ICES-003 statement

This Class B digital apparatus complies with Canadian ICES-003.

One-year limited warranty

Rocketfish Products ("Rocketfish") warrants to you, the original purchaser of this new **RF-NANMSE** ("Product"), that the Product shall be free of defects in the original manufacture of the material or workmanship for one (1) year from the purchase of the Product ("Warranty Period"). This Product must be purchased from an authorized dealer of Rocketfish brand products and packaged with this warranty statement. This warranty does not cover refurbished Product. If you notify Rocketfish during the Warranty Period of a defect covered by this warranty that requires service, terms of this warranty apply.

How long does the coverage last?

The Warranty Period lasts for one year (365 days), beginning on the date you purchased the Product. The purchase date is printed on the receipt you received with the product.

What does this warranty cover?

During the Warranty Period, if the original manufacture of the material or workmanship of the Product is determined to be defective by an authorized Rocketfish repair center or store personnel, Rocketfish will (at its sole option): (1) repair the Product with new or rebuilt parts; or (2) replace the Product at no charge with new or rebuilt comparable products or parts. Products and parts replaced under this warranty become the property of Rocketfish and are not returned to you. If service of Products and parts are required after the Warranty Period expires, you must pay all labor and parts charges. This warranty lasts as long as you own your Rocketfish Product during the Warranty Period. Warranty coverage terminates if you sell or otherwise transfer the Product.

How to obtain warranty service?

If you purchased the Product at a retail store location, take your original receipt and the Product to the store you purchased it from. Make sure that you place the Product in its original packaging or packaging that provides the same amount of protection as the original packaging. If you purchased the Product from an online web site, mail your original receipt and the Product to the address listed on the web site. Make sure that you put the Product in its original packaging or packaging that provides the same amount of protection as the original packaging.

Where is the warranty valid?

This warranty is valid only to the original purchaser of the Product in the United States, Canada, and Mexico.

What does the warranty not cover?

This warranty does not cover:

- Customer instruction
- Installation
- Set up adjustments
- Cosmetic damage
- Damage due to acts of God, such as lightning strikes
- Accident
- Misuse
- Abuse
- Negligence
- Commercial use
- Modification of any part of the Product, including the antenna

This warranty also does not cover:

- Damage due to incorrect operation or maintenance
- Connection to an incorrect voltage supply
- Attempted repair by anyone other than a facility authorized by Rocketfish to service the Product
- Products sold as is or with all faults
- Consumables, such as fuses or batteries
- Products where the factory applied serial number has been altered or removed

REPAIR REPLACEMENT AS PROVIDED UNDER THIS WARRANTY IS YOUR EXCLUSIVE REMEDY. ROCKETFISH SHALL NOT BE LIABLE FOR ANY INCIDENTAL OR CONSEQUENTIAL DAMAGES FOR THE BREACH OF ANY EXPRESS OR IMPLIED WARRANTY ON THIS PRODUCT, INCLUDING, BUT NOT LIMITED TO, LOST DATA, LOSS OF USE OF YOUR PRODUCT, LOST BUSINESS OR LOST PROFITS. ROCKETFISH PRODUCTS MAKES NO OTHER EXPRESS WARRANTIES WITH RESPECT TO THE PRODUCT, ALL EXPRESS AND IMPLIED WARRANTIES FOR THE PRODUCT, INCLUDING, BUT NOT LIMITED TO, ANY IMPLIED WARRANTIES OF AND CONDITIONS OF MERCHANTABILITY AND FITNESS FOR A PARTICULAR PURPOSE, ARE LIMITED IN DURATION TO THE WARRANTY PERIOD SET FORTH ABOVE AND NO WARRANTIES, WHETHER EXPRESS OR IMPLIED, WILL APPLY AFTER THE WARRANTY PERIOD. SOME STATES, PROVINCES AND JURISDICTIONS DO NOT ALLOW LIMITATIONS ON HOW LONG AN IMPLIED WARRANTY LASTS, SO THE ABOVE LIMITATION MAY NOT APPLY TO YOU. THIS WARRANTY GIVES YOU SPECIFIC LEGAL RIGHTS, AND YOU MAY ALSO HAVE OTHER RIGHTS, WHICH VARY FROM STATE TO STATE OR PROVINCE TO PROVINCE.

Contact Rocketfish:

For customer service please call 1-800-620-2790

www.rocketfishproducts.com

Distributed by Best Buy Purchasing, LLC

7601 Penn Avenue South, Richfield, Minnesota, U.S.A. 55423-3645

© 2009 Best Buy Enterprise Services, Inc.

All rights reserved. ROCKETFISH is a trademark of Best Buy Enterprise Services, Inc. Registered in some countries. All other products and brand names are trademarks of their respective owners.

www.rocketfishproducts.com (800) 620-2790

Distributed by Best Buy Purchasing, LLC

7601 Penn Avenue South, Richfield, MN 55423-3645 USA

© 2009 Best Buy Enterprise Services, Inc.

All rights reserved. ROCKETFISH is a trademark of Best Buy Enterprise Services, Inc.
All other products and brand names are trademarks of their respective owners

09-0750
ENGLISH

Free Manuals Download Website

<http://myh66.com>

<http://usermanuals.us>

<http://www.somanuals.com>

<http://www.4manuals.cc>

<http://www.manual-lib.com>

<http://www.404manual.com>

<http://www.luxmanual.com>

<http://aubethermostatmanual.com>

Golf course search by state

<http://golfingnear.com>

Email search by domain

<http://emailbydomain.com>

Auto manuals search

<http://auto.somanuals.com>

TV manuals search

<http://tv.somanuals.com>