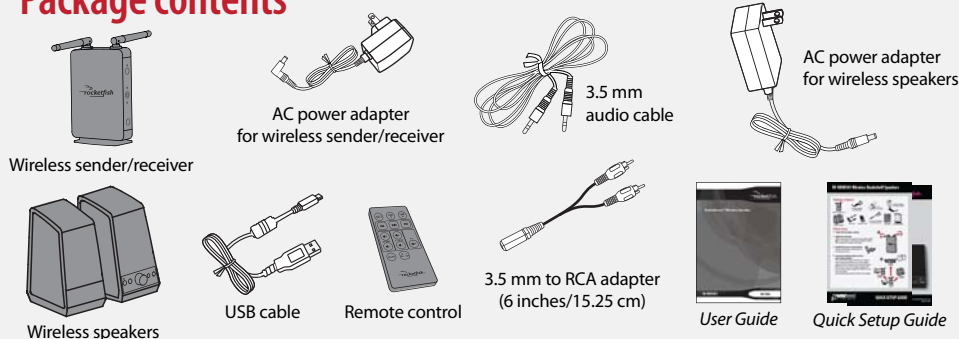


# RF-RBWS01 Wireless Bookshelf Speakers



## Package contents



## Initial setup

### 1 Unpack the package contents

### 2 Adjust the antennas

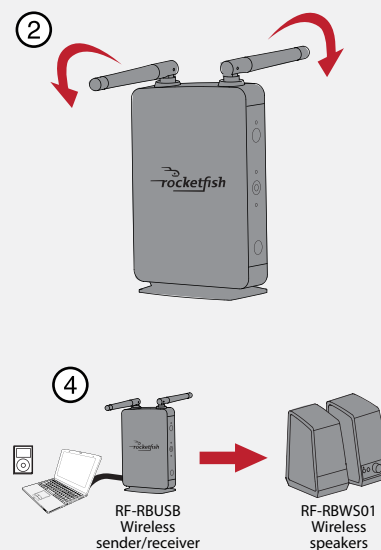
Adjust the antennas to gain the best audio signals.  
**Tip:** In some cases, you may improve range by rotating both antennas 0° to create a 180° angle.

### 3 Enable the remote control battery

Remove the tab from the bottom of the remote control.

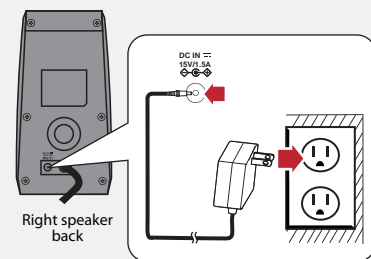
### 4 Set up the wireless sender/receiver and wireless speaker

The *Quick Setup Guide* will show you a typical setup using an audio device (such as an MP3 player, PC or A/V receiver). For more information about how to use other Rocketboost products with this product, see your *User Guide*. See the following steps for further setup details.



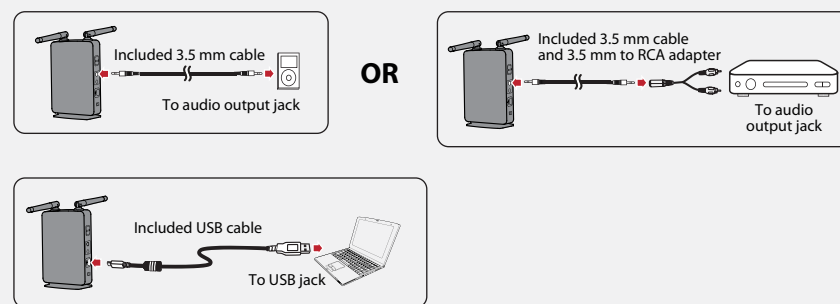
## Connecting power to the wireless speaker

Connect the AC power adapter to the wireless speaker and plug into an AC power outlet. The wireless speaker system turns on automatically.

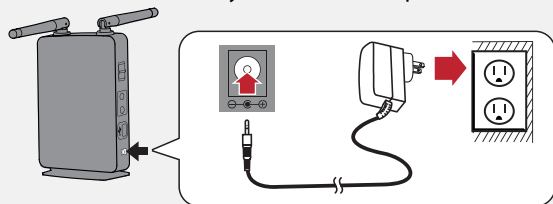


## Connecting audio source and power to wireless sender/receiver

1 Connect your audio source to the **LINE IN** jack or **USB** jack on the rear of the wireless sender, using the 3.5 mm audio cable or the USB cable. If necessary, you can also use the 3.5 mm to RCA adapter, if your audio device uses RCA-type line out connectors.



2 Remember to turn the volume up on your audio source especially if connected to a headphone output.  
3 Connect the AC power adapter to the wireless USB sender/receiver and plug into an AC power outlet. The wireless sender/receiver automatically turns on and the power indicator turns green.



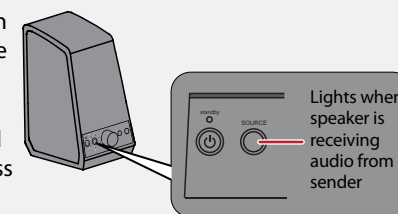
## Establishing communication

The wireless sender/receiver and wireless speakers were pre-joined so they will communicate with each other right out of the box. So if this is your first Rocketboost enabled product you can skip this section and go to the next section, *Listening to music*.

If you need to rejoin the wireless sender/receiver to the wireless speakers, and this is your only Rocketboost enabled product, then use the following steps.

- 1 Set the **HUB STATUS** switch on the wireless sender/receiver to **ENABLE** if this is your first Rocketboost product set.
  - The power indicator turns green when the **HUB STATUS** switch is set to **ENABLE**.
  - The power indicator turns blue when the **HUB STATUS** switch is set to **DISABLE**.
- 2 Press and hold on the wireless sender/receiver for more than three seconds to put it into joining mode. The power indicator starts blinking rapidly and the unit will stay in joining mode for 30 seconds.
- 3 Press and hold the button on the wireless speaker for more than three seconds so the wireless sender/receiver and wireless speaker enter connection mode.
  - The power indicator lights steadily if the joining was successful.
  - The power indicator blinks slowly if the joining was not successful.
- 4 After the link is established, if the **Source** indicator on the wireless speaker is still not illuminated, make sure that your source is turned on.

For more instructions, see your *User Guide*.  
If you already have other Rocketboost devices you need to join both the wireless sender/receiver and the wireless speaker to your existing hub device. See the *User Guide* for detailed instructions on how to do this.



## Listening to music

- 1 Turn on the wireless sender/receiver and wireless speaker. The power indicator LEDs should light steadily. If they are blinking you need to rejoin the wireless sender/receiver and wireless speaker. See the *Establishing communication* section above.
- 2 Point the remote control at the wireless sender/receiver and select either **USB-In** or **LINE-In** depending on which audio input you are using.
- 3 Play music from the audio device connected to your wireless sender/receiver and listen to it from the wireless speakers.
- 4 Adjust the volume level on your wireless speaker. If you have multiple audio sources in your Rocketboost network, press the **Source** button on the wireless speaker to hear the next audio source. Press the Source button again to cycle through all available audio sources.  
**Note:** Be sure to turn up the volume on your audio source device, especially if you are connected to a headphone output.

### Rocketboost network notes:

Every Rocketboost network must contain one hub device, which helps devices join the network. The network can have only one hub, which you can enable using the hub switch on the back of all Rocketboost wireless sender and wireless sender/receivers. If this is your first Rocketboost product, you should make the wireless sender/receiver the hub, if you already have Rocketboost products, you should disable hub mode on this device.

**Important:** Hub devices must always have power for your network to operate. The hub device can be in standby (power-saving) mode, but must stay plugged in.



## Free Manuals Download Website

<http://myh66.com>

<http://usermanuals.us>

<http://www.somanuals.com>

<http://www.4manuals.cc>

<http://www.manual-lib.com>

<http://www.404manual.com>

<http://www.luxmanual.com>

<http://aubethermostatmanual.com>

Golf course search by state

<http://golfingnear.com>

Email search by domain

<http://emailbydomain.com>

Auto manuals search

<http://auto.somanuals.com>

TV manuals search

<http://tv.somanuals.com>