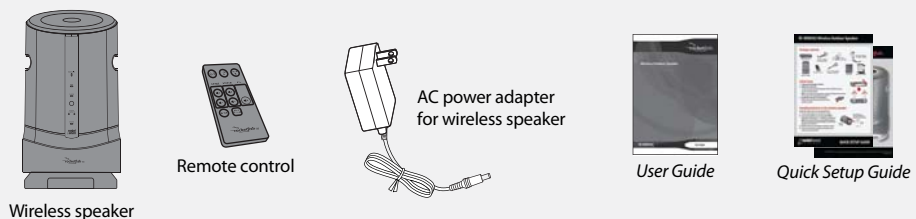


RF-RBWS02-01 Wireless Outdoor Speaker

Package contents



Initial setup

- 1 **Unpack the package contents**
- 2 **Enable the remote control battery**
Remove the tab from the bottom of the remote control.



Installing batteries in the wireless speaker

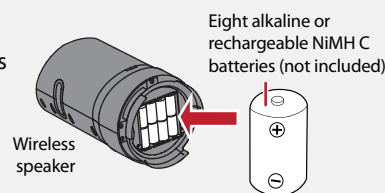
(skip this if you are not using batteries)

Note: You will need a Phillips screwdriver.

- 1 Unscrew the bottom cover (three screws).
- 2 Insert eight alkaline or rechargeable NiMH C batteries matching the +/- symbols as indicated.

Note: This product will only recharge NiMH batteries. Do not try to charge any other batteries such as NiCad batteries in this product.

- 3 Replace the cover and fasten the three screws.
- 4 Turn on the wireless speaker using the power switch on the top panel.

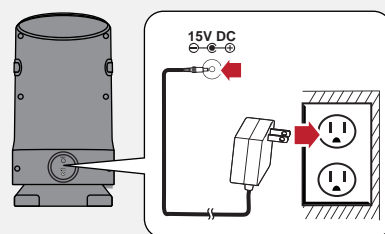


Connecting the DC adapter to the wireless speaker

(if you are not using batteries, or if you want to charge the batteries)

- 1 Connect the AC power adapter to the wireless speaker and plug into an AC power outlet.
- 2 Turn on the wireless speaker using the power switch on the top panel.

Note: If you are using NiMH rechargeable batteries, your batteries will recharge whenever the speaker is connected to a power outlet with the AC power adapter. If batteries are not fully charged, you should charge them for 16 hours before using the wireless speaker.



Setting up your Rocketboost network

Rocketboost technology can connect all audio devices throughout your home to form a home audio network. Rocketboost products include "senders," which send audio streams, and "receivers," which receive the audio. This lets you listen to music from your sender in other rooms, using your receiver.

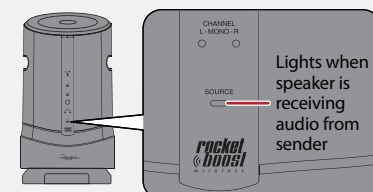
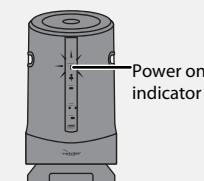
The RF-RBWS02-01 is a Rocketboost receiver and you can listen to audio from any of your Rocketboost sender devices.

Rocketboost is expandable. Each Rocketboost receiver can select the audio from any sender in your Rocketboost audio network. You can set up your network to meet your specific needs. The illustration shows an example Rocketboost network.



Establishing communication

- 1 If possible, bring your Rocketboost hub device and the new Rocketboost wireless speaker into the same room.
- 2 Press the **Power** button on the Rocketboost hub device to turn it on.
- 3 Press the **Power** button on your Rocketboost wireless speaker to turn it on.
- 4 Press and hold the **Power** button on the Rocketboost hub device for more than three seconds to put it into joining mode. The power indicator starts blinking rapidly and the unit will stay in joining mode for 30 seconds.
- 5 Press and hold the **Power** button on your Rocketboost wireless speaker for more than three seconds to put it into joining mode.
 - When successfully joined, the power indicator LEDs on both products will stop blinking and stay on.
 - If joining fails after 30 seconds, the power indicator LEDs will begin flashing at a slower rate. If this occurs, repeat the above steps.
 - Repeat steps 1-5 for each additional Rocketboost device you are adding to your network.
- 6 After the link is established, if the **Source** indicator on the wireless speaker is still not illuminated, make sure that your source is turned on. For more instructions, see your *User Guide*.



Listening to music

- 1 Turn on the wireless sender and wireless speaker. The power indicator LEDs should light steadily. If they are blinking you need to rejoin the wireless sender and wireless speaker. See the *Establishing communication* section above.
- 2 Play music from the audio device connected to your wireless sender and listen to it from the wireless speaker.
- 3 Adjust the volume level on your wireless speaker.

Using two wireless speakers as a stereo pair

Your wireless speaker supports an easy-to-use stereo mode in case you use a second wireless speaker.

To join a second wireless speaker to the network in a stereo configuration:

- 1 Join the first wireless speaker to your network (if it is already connected, skip to step 2). If you are unsure how to do that refer to "Establishing communication" above.
- 2 Press the **SOURCE** button on the first wireless speaker to select the Rocketboost audio source you want to listen to.
- 3 Join the second wireless speaker to the network. See "Establishing communication" above.
- 4 Press the **SOURCE** button on the second wireless speaker to select the same Rocketboost audio source as the other wireless speaker. You will now have two mono speakers, indicated by the LED on the front panel of each device.
- 5 Select which wireless speaker you want to be the left speaker, then press and hold the Source button for five seconds. It will start blinking rapidly.
- 6 On the other wireless speaker, press and hold the **Source** button for five seconds. The **Source** indicator will blink rapidly and then turn solid. The **Channel (L/R)** LED indicators will then show the appropriate Left and Right indication for each speaker.
- 7 The wireless speaker automatically switches to Mono if only one wireless speaker is turned on; however, when the second wireless speaker is turned on, the stereo settings will take effect.

Rocketboost network notes:

Every Rocketboost network must contain one hub device, which helps devices join the network. The network can have only one hub, which you can enable using the hub switch on the back of all Rocketboost wireless senders and wireless sender/receivers.

The RF-RBWS02-01 is a receiver and is not a hub device. To add this receiver to your Rocketboost network, you need to join it to your hub device.

Important: Hub devices must always have power for your network to operate. The hub device can be in standby (power-saving) mode, but must stay plugged in.



Free Manuals Download Website

<http://myh66.com>

<http://usermanuals.us>

<http://www.somanuals.com>

<http://www.4manuals.cc>

<http://www.manual-lib.com>

<http://www.404manual.com>

<http://www.luxmanual.com>

<http://aubethermostatmanual.com>

Golf course search by state

<http://golfingnear.com>

Email search by domain

<http://emailbydomain.com>

Auto manuals search

<http://auto.somanuals.com>

TV manuals search

<http://tv.somanuals.com>