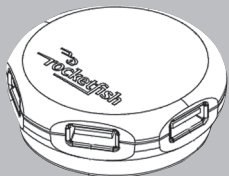




USB 2.0 4-Port Hub

Installation Instructions



Package contents

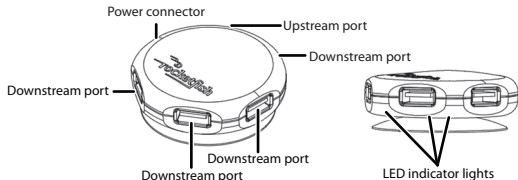
- Rocketfish USB 2.0 4-port hub
- A-to-mini-B USB cable
- Suction cup
- *Quick Setup Guide*

System requirements

- One available USB port
- Operating system: Windows 7, Windows Vista, Windows XP, or Mac OS X v10.2.8 or above

Features

- Attach up to four USB devices to your computer
- One port for connecting to your computer
- Four enhanced, high-speed, USB 2.0 480 Mbps ports
- Compatible with USB 1.1 and USB 2.0 devices
- Data transfer rates of 1.5 Mbps, 12 Mbps, and 480 Mbps
- Plug-and-Play installation
- Three power status LED indicators
- Convenient attachment to any smooth surface with provided suction cup
- USB Implementers Forum (USB-IF) certification
- Can purchase (not included) AC power adapter 5V 2.1A



Using the USB hub

- 1 Plug the mini-B USB end of the cable into the upstream port, then plug the USB-A end into an available USB port on your computer.

Note: If you use a USB 1.1 port on your computer, all devices connected to your USB hub will run at the slower USB 1.1 speed.

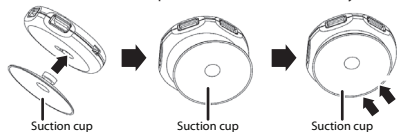
- 2 Plug USB devices into any of the four downstream ports.

- 3 Plug the AC adapter (optional) into a power outlet, then plug the DC connector into the DC power jack on the USB hub. When your USB hub is receiving power, the blue LED lights on the hub base turn on.

Note: The hub can be used without the power supply when connected devices draw a total of 100mA of current or less. If you are unsure of the total connected current, use the power supply.

Installing the suction cup mount

- 1 Insert the suction cup into the mounting hole on the bottom of the hub.
- 2 Attach the suction cup to a notebook surface or any other smooth surface.



Cable management

For easy storage, wrap the USB cable around the hub's suction cup.

Troubleshooting

Problem	Solution
USB hub operates erratically.	Your USB hub may have been exposed to static electricity. Disconnect the A-to-mini-B cable from your computer, then disconnect the hub's power cord from the power outlet. Wait at least five seconds, then reconnect the USB cable and power cord.
Connected USB devices operate erratically or not at all.	You have not connected your USB hub to a power outlet. Some USB devices require more power than your computer can provide. Connect the AC power adapter to your USB hub.
The USB hub does not work at all.	Your computer's operating system may not support USB. For more information, see "System requirements."

Specifications

USB ports	Downstream: USB type A (4) Upstream: USB type mini B (1)
LED	3 blue LED power indicators
Power mode	Bus power
Output voltage	Self-power (optional)
Output current	+5V DC (per port) 500mA (max per port)

Operating temperature	41°F to 104°F (5°C to 40°C)
Storage temperature	-4°F to 140°F (-20°C to 60°C)
Humidity	0 to 80% RH non-condensing
Weight	1.2 ounces (34 grams)
Dimensions (includes suction cup)	2.20 × 2.38 × 1.08 inches (56 × 60.4 × 27.4 mm)
Housing	Plastic

Legal notices

FCC Part 15

This equipment has been tested and found to comply within the limits for a Class B digital device, pursuant to Part 15 of the FCC rules. These limits are designed to provide reasonable protection against harmful interference in a residential installation. This equipment generates uses and can radiate radio frequency energy and if not installed and used in accordance with the instructions, may cause harmful interference to radio communications. However, there is no guarantee that interference will not occur in a particular installation. If this equipment does cause harmful interference to radio or television reception, which can be determined by turning the equipment off and on, the user is encouraged to try to correct the interference by one or more of the following measures:

- Reorient or relocate the receiving antenna.
 - Increase the separation between the equipment and receiver.
 - Connect the equipment into an outlet on a circuit different from that to which the receiver is connected.
- Consult the dealer or an experienced radio/TV technician for help.

FCC warning

Changes or modifications not expressly approved by the party responsible for compliance with the FCC Rules could void the user's authority to operate this equipment.

Canada ICES-003 statement

This Class B digital apparatus complies with Canadian ICES-003.

One-year limited warranty

Visit www.rocketfishproducts.com for details.

Contact Rocketfish:

For customer service, call 1-800-620-2790

www.rocketfishproducts.com

© 2011 BBY Solutions, Inc. All Rights Reserved.

Distributed by Best Buy Purchasing, LLC

7601 Penn Avenue South, Richfield, MN USA 55423-3645

ROCKETFISH is a trademark of BBY Solutions, Inc. All other products and brand

names are trademarks of their respective owners.

Download from Www.Somanuals.com. All Manuals Search And Download.

Free Manuals Download Website

<http://myh66.com>

<http://usermanuals.us>

<http://www.somanuals.com>

<http://www.4manuals.cc>

<http://www.manual-lib.com>

<http://www.404manual.com>

<http://www.luxmanual.com>

<http://aubethermostatmanual.com>

Golf course search by state

<http://golfingnear.com>

Email search by domain

<http://emailbydomain.com>

Auto manuals search

<http://auto.somanuals.com>

TV manuals search

<http://tv.somanuals.com>