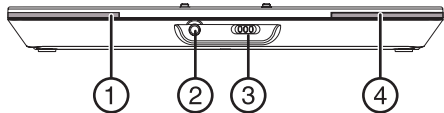


## Package contents

- Induction battery charger
- Battery packs (2)
- AC adapter
- Quick Setup Guide

## Features

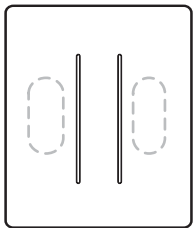
### Induction battery charger base (front)



#	Description
1	Charge indicator
2	DC IN jack

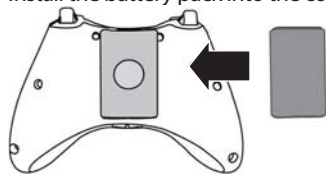
#	Description
3	On/Off switch
4	Charge indicator

### Induction battery charger base (top)

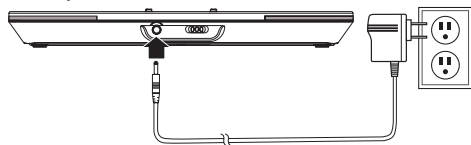


## Installing the battery pack

- 1 Remove the controller battery compartment cover.
- 2 Install the battery pack into the controller.



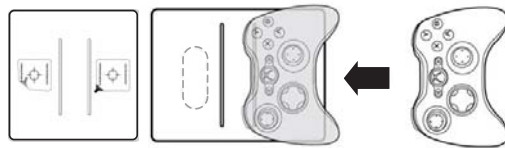
- 3 Plug the AC adapter into the **DC IN** jack on the charger and into a power outlet.



## Using the charger

**Important:** The battery pack must be fully charged before you use it for the first time. Allow up to four hours for the first charge.

- 1 Turn on the charger.
- 2 Locate the sticker on the top of the charger, then place the controller on the charger. For best performance, center the battery pack where the sticker indicates.



If the charger detects a battery, charging starts and the glow bar lights red. When charging is complete, the glow bar lights green.

## Battery notes:

- Rechargeable batteries only attain maximum charging capacity once they have been charged/discharged several times.
- The battery has a limited service life and playing time is reduced after many charging cycles.
- Do not short-circuit the battery or place it in fire.
- Unusable batteries should be disposed of as hazardous waste. Do not dispose of batteries in household waste.

## Important safety information

- 1) Read these instructions.
- 2) Keep these instructions.
- 3) Heed all warnings.
- 4) Follow all instructions.
- 5) Do not use this apparatus near water.
- 6) Clean only with a dry cloth.
- 7) Do not install near any heat sources such as radiators, heat registers, stoves, or other apparatus (including amplifiers) that produce heat.
- 8) Do not defeat the safety purpose of the polarized plug. A polarized plug has two blades with one wider than the other. The wide blade is provided for your safety. If the provided plug does not fit into your outlet, consult an electrician for replacement of the obsolete outlet.
- 9) Protect the power cord from being walked on or pinched particularly at plugs, convenience receptacles, and the point where they exit from the apparatus.
- 10) Only use attachments/accessories specified by the manufacturer.
- 11) Unplug this apparatus during lightning storms or when unused for long periods of time.
- 12) Refer all servicing to qualified service personnel. Servicing is required when the apparatus has been damaged in any way, such as power-supply cord or plug is damaged, liquid has been spilled or objects have fallen into the apparatus, the apparatus has been exposed to rain or moisture, does not operate normally, or has been dropped.

## Electromagnetic Waves

This product uses the magnetic induction principle for charging. Thus, it may generate electromagnetic waves. Electromagnetic waves may affect electronic equipment or medical devices (for example, pacemakers), which may cause malfunctions and possible injuries.

- If you use a pacemaker or other medical device, consult your physician or the manufacturer of your medical device before using the Induction Battery Charger.
- Keep the charger at least 9 inches (23 cm) away from a pacemaker or other medical devices when in use.
- Do not use the charger in the following locations:
  - Areas where wireless devices' use is prohibited, such as in airplanes or hospitals. Abide by medical institution regulations when using the Induction Battery Charger on their premises.
  - Crowded areas.
  - Areas near fire alarms, automatic doors, and other types of automated equipment.

## Battery pack warnings

Do not handle a damaged or leaking battery pack. Contact with the material can result in injury or burns to the eyes or skin. Even if foreign substances are not immediately visible, chemical changes in the material can result in injuries occurring at a later time. If you come into contact with material from a leaking battery pack, take the following actions:

- If the material gets into the eyes, do not rub. Immediately flush the eyes with clean water and seek medical attention.
- If the material comes into contact with the skin or clothes, immediately rinse the affected area with clean water. Consult your physician if inflammation or soreness develops.
- Handle the battery pack with care. The battery pack may explode or present a fire or chemical burn hazard if it is not handled carefully.
- Do not allow the battery pack to come into contact with fire or subject it to extreme temperatures such as in direct sunlight, in a vehicle exposed to the sun, or near a heat source.

- Do not cause the battery pack to short-circuit.
- Do not disassemble or tamper with the battery pack.
- Prevent damage to the battery pack. Do not carry or store the battery pack with metal items such as coins or keys. If damaged, discontinue use.
- Do not throw or drop the battery pack or subject it to strong physical shock.
- Do not put heavy objects on or apply pressure to the battery pack.
- Do not allow the battery pack to come into contact with liquids. If it becomes wet, discontinue use until it is completely dry.
- Keep the battery pack out of reach of small children.
- If the Xbox 360™ controller will not be used for an extended period of time, remove the battery pack and store it in a cool, dry place out of the reach of children.
- Use only the designated AC adapter to charge the battery pack.

## Legal notices

### FCC Part 15

This device complies with Part 15 of the FCC Rules. Operation of this product is subject to the following two conditions: (1) this device may not cause harmful interference, and (2) this device must accept any interference received, including interference that may cause undesired operation.

This equipment has been tested and found to comply within the limits for a class B digital device, pursuant to Part 15 of the FCC Rules. These limits are designed to provide reasonable protection against harmful interference in a residential installation. This equipment generates, uses, and can radiate radio frequency energy and, if not installed and used in accordance with the instructions, may cause harmful interference to radio communications. However, there is no guarantee that interference will not occur in a particular installation. If this equipment does cause harmful interference to radio or television reception, which can be determined by turning the equipment off and on, the user is encouraged to try to correct Download from [www.Somanuals.com](http://www.Somanuals.com). All Manuals Search And Download.

the interference by one or more of the following measures:

- Reorient or relocate the receiving antenna.
- Increase the separation between the equipment and receiver.
- Connect the equipment into an outlet on a circuit different from that to which the receiver is connected.
- Consult the dealer or an experienced radio/TV technician for help.

## FCC warning

Changes or modifications not expressly approved by the party responsible for compliance with the FCC Rules could void the user's authority to operate this equipment.

## Canada ICES-003 statement

This Class B digital apparatus complies with Canadian ICES-003.

## 90-day limited warranty

Visit [www.rocketfishproducts.com](http://www.rocketfishproducts.com) for details

© 2009 Best Buy Enterprise Services, Inc.

All rights reserved. ROCKETFISH is a trademark of Best Buy Enterprise Services, Inc. Registered in some countries. All other products and brand names are trademarks of their respective owners.

ENGLISH 09-0585

## Free Manuals Download Website

<http://myh66.com>

<http://usermanuals.us>

<http://www.somanuals.com>

<http://www.4manuals.cc>

<http://www.manual-lib.com>

<http://www.404manual.com>

<http://www.luxmanual.com>

<http://aubethermostatmanual.com>

Golf course search by state

<http://golfingnear.com>

Email search by domain

<http://emailbydomain.com>

Auto manuals search

<http://auto.somanuals.com>

TV manuals search

<http://tv.somanuals.com>