

Redesigned Keyboard and Stunning Piano Sound

The new HP-207/HP-203/HP-201 Series digital pianos bring new piano sound and a refined realistic touch to a beautiful cabinet design. Every model boasts a stunning 88-key multi-sampled piano sound, along with the new PHA II keyboard with a dramatically wider dynamic range. Continuous damper pedal for richer expressiveness provides an acoustic feel in a digital piano.



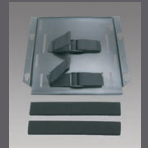
HP-207 Half Key-Cover Feature

The HP-207 comes equipped with an attractive half lid that slides out to cover the front-panel controls. This feature not only serves a child lock, but also enhances the HP-207's real-piano look.



Holder (for External CD drive) DH-01

DH-01 is an optional mounting bracket for attaching a commercial CD drives (sold separately).



- 88-key multi-sampled piano sound with piano resonance
- PHA II keyboard with wider dynamic range of touch response
- Escapement (HP-207/HP-203) and Ivory Feel (HP-207) reproduces the look and feel of acoustic-piano keys
- Newly designed cabinet with front legs for a stable and stylish piano look
- Continuous damper for wider expression
- SMF and WAV file playback via USB Host port (HP-207/HP-203)
- Audio CD playback, key control, and center cancel with optional USB-CD drive (HP-207/HP-203)
- Key touch adjustable by 100 levels (HP-207)
- You can adjust the piano sound to your preference (Piano Designer) (HP-207)



HP-207: The Ultimate in Elegance and Playability

The flagship HP-207 features an ultra-realistic 88-key multi-sampled piano sound under the control of Roland's new PHA II "Ivory Feel" keyboard with Escapement, along with key touch adjustable to 100 levels. A powerful speaker system, front legs, and elegant cabinet combine for the look and sound of an acoustic piano.



HP-207-MH

HP-203: Acoustic Feel, Powerful Digital Features

The HP-203 is equipped with an advanced PHA II Keyboard with Escapement, providing a natural touch and ultra-wide dynamic response. Roland's acclaimed 88-key multi-sampled piano sound is onboard, as is support for continuous pedaling. The newly styled cabinet, complete with front legs, provides a real-piano look and solid support.



HP-203-SB

HP-201: Amazing Sound in an Attractive Cabinet

With its elegantly designed cabinet (featuring front legs), the HP-201 is an excellent centerpiece to any home. It plays and sounds like a real piano thanks to its all-new multi-sampled piano sound and a PHA II keyboard, which provides a wide and expressive touch response.



HP-201-MH

PHA II: Progressive Hammer Action

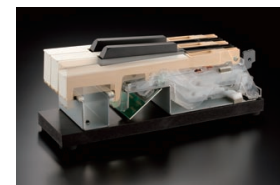


All three HP models share the PHA II keyboard in common. These next-generation keyboards feature a redesigned progressive hammer-action mechanism for a natural touch response from pianissimo to fortissimo. In addition, the HP-series' acclaimed Escapement feature comes standard on the HP-207 and HP-203 models.

Ivory Feel Feature



The HP-207 incorporates Roland's PHA II "Ivory Feel" keyboard with Escapement. This amazing new keyboard technology reproduces the real feel of ivory for the natural keys and ebony for the sharps. The natural keys have a 2-piece structure, which consists of base- and surface-material layers. This reproduces stability and comfort of a real acoustic-piano keyboard.



HP-207 Specifications

[Keyboard] ■ Keyboard 88 keys (PHA II with Escapement) ■ **Touch Sensitivity** Touch: 100 levels / Fixed Touch (level adjustable), Hammer Response: Off/1 to 10 ■ **Keyboard Mode** Whole, Dual (voice balance adjustable), Split (split point adjustable), Split piano **[Sound Generator]** ■ **Conforms to** GM2/GS/XG Lite ■ **Max. Polyphony** 128 voices ■ **Tones** 337 tones (including 8 drum sets, 1 SFX set) ■ **Temperament** 8 types, selectable tonic ■ **Stretched Tuning** Off/Preset/User tuning (adjustable in individual notes: -50.0 to +50.0 cent) ■ **Master Tuning** 415.3 to 466.2 Hz (adjustable in increments of 0.1 Hz) ■ **Transpose Key** Transpose: -6 to +5 (in semitones), Playback Transpose (with Audio CD/Audio File): -6 to +5 (in semitones) ■ **Effects** 3D (4 Levels), Dynamics (4 Types), Reverb (Off/1 to 10), Rotary Speaker Effect (only for organ tones, Slow/Fast), 4-band Digital Equalizer, Tone effects (only adjust values), Only for Piano Tones: Open/close lid (only for piano tones, 7 levels), Hammer Noise (5 levels), Damper Resonance (Off/1 to 10), Damper Noise (Off/1 to 10), Duplex Scale (Off/1 to 10), String Resonance (Off/1 to 10), Key Off Resonance (Off/1 to 10) **[Recorder]** ■ **Tracks** 3 tracks ■ **Songs** Recorder section: 1 song, Internal Memory: Max. 99 songs ■ **Note Storage** Approx. 30,000 notes ■ **Control** Song Select, Play/Stop, Rec, Previous/Rewinding, Next/Fast-forwarding, Track Mute (Mute Level adjustable), Tempo, Tempo Mute, All Song Play, Count-in, Count-down, 16 part Mute, Song Volume, Center Cancel (only for audio playback) ■ **Tempo** Quarter note = 10 to 500 ■ **Resolution** 120 ticks per quarter note ■ **Metronome** Beat: 2/2, 3/4, 4/4, 5/4, 6/4, 7/4, 3/8, 6/8, 9/8, 12/8, Volume: 0 to 10 levels, Metronome Pattern: 11 patterns, Metronome Sound: 8 types **[Internal Memory]** ■ **Songs** Max. 99 songs ■ **Save Song** Standard MIDI Files (Format 0) **[External Memory]** ■ **External Storage** USB CD Drive (Sold Commercially*1, Read Only), USB Flash Memory (Sold Separately), USB Floppy Disk Drive (Sold Separately) ■ **Playable Software** Standard MIDI Files (Format 0/1), Roland Original Format (i-Format), Audio File (WAV 44.1kHz / 16bit Linear Format), Audio CDs (CD-DA) **[Others]** ■ **Internal Songs** 70 songs + 7 Tone Demo Songs ■ **Rated Power Output** 60 W x 2 ■ **Speakers** 16 cm x 2, 5 cm x 2 ■ **Display** 128 x 64 dots Graphic monochrome LCD (with backlit) ■ **Language** English, Japanese ■ **Lyrics** Yes (Built-in Display) ■ **Control Volume**, Brilliance, LCD Contrast ■ **Pedal** Damper (half-pedal recognition), Soft (half-pedal recognition, function assignable), Sostenuto (function assignable) ■ **Other Function** Panel Lock, Panel Lid, V-LINK ■ **Connectors** AC inlet, Pedal connector, Input jacks (Front: L/Mono, R Rear: L/Mono, R Rear: L/Mono, R), Output jacks (L/Mono, R), USB connector, MIDI connectors (IN, OUT), Phones jack (Stereo) x 2, Ext Memory port ■ **Power Supply** AC: 115 V, AC: 117 V, AC: 220 V, AC: 230 V, AC: 240 V (50/60 Hz) ■ **Power Consumption** 105 W ■ **Dimensions** With Music Rest: 1388 (W) x 529 (D) x 1,076 (H) mm/ 54-11/16 (W) x 20-7/8 (D) x 42-3/8 (H) inches, Without Music Rest: 1388 (W) x 529 (D) x 1,076 (H) mm/ 54-11/16 (W) x 20-7/8 (D) x 35-1/8 (H) inches ■ **Weight** 78 kg / 172 lbs ■ **Accessories** Owner's Manual, Power Cord, Roland 60 Classical Piano Masterpieces, Headphones Hook ■ **Options** USB Memory, Floppy Disk Drive: FD-01A, Holder (External CD drive): DH-01

* The specifications are subject to change without notice.

HP-203 Specifications

[Keyboard] ■ Keyboard 88 keys (PHA II with Escapement) ■ **Touch Sensitivity** Touch: 5 levels/Fixed Touch, Hammer Response: Off/1 to 10 ■ **Keyboard Mode** Whole, Dual (voice balance adjustable), Split (split point adjustable), Split piano **[Sound Generator]** ■ **Conforms to** GM2/GS/XG Lite ■ **Max. Polyphony** 128 voices ■ **Tones** 306 tones (including 8 drum sets, SFX set) ■ **Temperament** 8 types, selectable tonic ■ **Stretched Tuning** On/Off ■ **Master Tuning** 415.3 to 466.2 Hz (adjustable in increments of 0.1 Hz) ■ **Transpose Key** Transpose: -6 to +5 (in semitones), Playback Transpose (with Audio CD/Audio File): -6 to +5 (in semitones) ■ **Effects** 3D (4 Levels), Dynamics (4 Types), Reverb (Off/1 to 10), Key Off Resonance (only for piano tones, Off/1 to 10), String Resonance (only for piano tones, Off/1 to 10), Damper Resonance (only for piano tones, Off/1 to 10) **[Recorder]** ■ **Tracks** 3 tracks ■ **Songs** Recorder Section: 1 song, Internal Memory: Max. 99 songs ■ **Note Storage** Approx. 30,000 notes ■ **Control** Song Select, Play/Stop, Rec, Previous/Rewinding, Next/Fast-forwarding, Track Mute (Mute Level adjustable), Tempo, Tempo Mute, All Song Play, Count-in, Count-down, Song Volume, Center Cancel (only for audio playback) ■ **Tempo** Quarter note = 10 to 500 ■ **Resolution** 120 ticks per quarter note ■ **Metronome** Beat: 2/2, 3/4, 4/4, 5/4, 6/4, 7/4, 3/8, 6/8, 9/8, 12/8, Volume: 0 to 10, Metronome Sound: 8 types **[Internal Memory]** ■ **Songs** Max. 99 songs ■ **Save Song** Standard MIDI Files (Format 0) **[External Memory]** ■ **External Storage** USB CD Drive (Format 0) **[External Memory]** ■ **External Storage** USB CD Drive (Sold Commercially*1, Read Only), USB Flash Memory (Sold Separately), USB Floppy Disk Drive (Sold Separately) ■ **Playable Software** Standard MIDI Files (Format 0/1), Roland Original Format (i-Format), Audio File (WAV 44.1kHz / 16-bit Linear Format) Audio CDs (CD-DA) **[Others]** ■ **Internal Songs** 65 songs + 7 Tone Demo Songs ■ **Rated Power Output** 30 W x 2 ■ **Speakers** 12 cm x 2 ■ **Display** 7 segments, 3 characters LED, Beat LED ■ **Control Volume**, Brilliance*21 Steps (-10 to +10) ■ **Pedal** Damper (half-pedal recognition), Soft (half-pedal recognition, function assignable), Sostenuto (function assignable) ■ **Other Function** Panel Lock, V-LINK ■ **Connectors** AC inlet, Pedal connector, Input jacks (Front: L/Mono, R Rear: L/Mono, R), Output jacks (L/Mono, R), USB connector, MIDI connectors (IN, OUT), Phones jack (Stereo) x 2, External Memory port ■ **Power Supply** AC: 115 V, AC: 117 V, AC: 220 V, AC: 230 V, AC: 240 V (50/60 Hz) ■ **Power Consumption** 70 W ■ **Dimensions** With Music Rest: 1387 (W) x 422 (D) x 1036 (H) mm/ 54-5/8 (W) x 16-5/8 (D) x 40-13/16 (H) inches, Without Music Rest: 1387 (W) x 422 (D) x 846 (H) mm/ 54-5/8 (W) x 16-5/8 (D) x 33-5/16 (H) inches ■ **Weight** 56 kg / 123 lbs ■ **Accessories** Owner's Manual, Roland 60 Classical Piano Masterpieces, Power Cord, Headphones Hook, Music Rest, Music Rests attachment screws ■ **Options** USB Memory, Floppy Disk Drive: FD-01A, Holder (External CD drive): DH-01

*1 A list of the CD drives that have been tested and found to be compatible is available on the Roland website.

* The specifications are subject to change without notice.

HP-201 Specifications

[Keyboard] ■ Keyboard 88 keys, PHA II keyboard ■ **Touch Sensitivity** 3 levels, Fixed ■ **Keyboard Mode** Whole, Dual (voice balance adjustable), Twin piano ■ **Max. Polyphony** 128 voices ■ **Tones** 20 tones ■ **Tone available at the time of MIDI data performance:** 285 tones (including 8 drum sets and 1 SFX set) ■ **Temperament** 7 types, selectable tonic ■ **Stretched Tuning** On/Off ■ **Master Tuning** 415.3 to 466.2 Hz (adjustable in increments of 0.1 Hz) ■ **Transpose Key** Transpose: -6 to +5 (in semitones) ■ **Effects** Reverb (10 levels), Dynamics (3 levels, Off), Key Off Resonance (only for piano tones, 8 levels), Damper Resonance (only for piano tones, 8 levels) **[Recorder]** ■ **Track** 1 track ■ **Song Recorder** section: 1 song ■ **Note Storage** Approx. 10,000 notes ■ **Controls** Song Select, All Song Play/Stop, Rec ■ **Tempo** Quarter note = 10 to 500 ■ **Resolution** 120 ticks per quarter note ■ **Metronome** Beat: 0/4, 2/4, 3/4, 4/4, 5/4, 6/4, Volume: 8 levels **[Other]** ■ **Internal Songs** 65 songs ■ **Rated Power Output** 25 W x 2 ■ **Speakers** 12 cm x 2 ■ **Control Volume** ■ **Pedals** Damper (half-pedal recognition), Soft (half-pedal recognition), Sostenuto ■ **Other Function** Panel Lock, V-Link ■ **Connectors** AC inlet, Pedal connector, Input jacks (L/Mono, R), Output jacks (L/Mono, R), USB connector, MIDI connectors (In, Out), Phones jack (Stereo) x 2 ■ **Power Supply** AC 115 V, AC 117 V, AC 220 V, AC 230 V, AC 240 V (50/60 Hz) ■ **Power Consumption** 48 W ■ **Dimensions** with Music Rest: 1387 (W) x 422 (D) x 1012 (H) mm/ 54-5/8 (W) x 16-5/8 (D) x 39-7/8 (H) inches, without Music Rest: 1387 (W) x 422 (D) x 822 (H) mm/ 54-5/8 (W) x 16-5/8 (D) x 32-3/8 (H) inches ■ **Weight** 54 kg / 120 lbs ■ **Accessories** Owner's Manual, Power Cord, Headphone Hook, Music Rest, Music Rests attachment screws

* The specifications are subject to change without notice.

Control Panel



HP-207



HP-203



HP-201

Comparison Chart

	HP-207	HP-203	HP-201	
Sound	Polyphony (number of voices)	128	128	128
	88-Key Multi Sampled Piano Sound	Yes	Yes	Yes
Keyboard	AMP	60W x 2	30W x 2	25W x 2
	Keyboard	PHA II	PHA II	PHA II
Pedal	Ivory Feel	Yes	No	No
	Escapement	Yes	Yes	No
Cabinet	Continuous Pedal	Yes	Yes	Yes
	Front Leg	Yes	Yes	Yes
Function	Color Variation *1	MH, SB	MH, SB	MH
	Display	Graphic LCD	7seg	—
Connectors	SMF Playback with USB External Device	Yes	Yes	No
	Recorder	3Tr.	3Tr.	1Tr.
Connectors	"wav" file Playback with USB External Device	Yes	Yes	No
	Audio CD Playback (Optional CD Drive) *2	Yes	Yes	No
Connectors	USB Host	Yes	Yes	No
	USB Function	MIDI	MIDI	MIDI

*1 MH: Mahogany Finish / SB: Satin Black Finish

*2 Compatible with USB CD drive commercially available in the market.

Free Manuals Download Website

<http://myh66.com>

<http://usermanuals.us>

<http://www.somanuals.com>

<http://www.4manuals.cc>

<http://www.manual-lib.com>

<http://www.404manual.com>

<http://www.luxmanual.com>

<http://aubethermostatmanual.com>

Golf course search by state

<http://golfingnear.com>

Email search by domain

<http://emailbydomain.com>

Auto manuals search

<http://auto.somanuals.com>

TV manuals search

<http://tv.somanuals.com>