

SPECS	KR-107	KR-105	KR-103
KEYBOARD	88 KEYS (PROGRESSIVE HAMMER-ACTION KEYBOARD WITH ESCAPEMENT) • TOUCH SENSITIVITY: YES • KEYBOARD MODE: WHOLE, SPLIT (ADJUSTABLE SPLIT POINT), LAYER, ARRANGER, PIANO STYLE ARRANGER, MANUAL DRUMS/SFX	88 KEYS (PROGRESSIVE HAMMER-ACTION KEYBOARD) • TOUCH SENSITIVITY: YES • KEYBOARD MODE: WHOLE, SPLIT (ADJUSTABLE SPLIT POINT), LAYER, ARRANGER, PIANO STYLE ARRANGER, MANUAL DRUMS/SFX	88 KEYS (COMPACT PROGRESSIVE HAMMER-ACTION KEYBOARD), TOUCH SENSITIVITY • KEYBOARD MODE: WHOLE, SPLIT (ADJUSTABLE SPLIT POINT), LAYER, ARRANGER, PIANO STYLE ARRANGER, MANUAL DRUMS/SFX
SOUND GENERATOR	CONFORMS TO GM2/GS/XG LITE • MAX. POLYPHONY: 128 VOICES • TONES: (TONE SEARCH BY TERMS AND BY LETTERS) 6 GROUPS 736 VARIATIONS (INCLUDING 8 TONE WHEEL ORGANS, 18 DRUM SETS, SFX SET) • TEMPERAMENT: 8 TYPES, SELECTABLE TONIC • STRETCHED TUNING: 2 TYPES • MASTER TUNING: 415.3 HZ -TO 466.2 HZ (ADJUSTABLE IN INCREMENTS OF 0.1 HZ) • TRANSPOSE: KEY TRANSPOSE (-6 TO +5 IN UNITS OF SEMITONE), PLAYBACK TRANSPOSE (-24 TO +24 IN UNITS OF SEMITONE)	CONFORMS TO GM2/GS/XG LITE • MAX. POLYPHONY: 64 VOICES • TONES: 6 GROUPS 646 TONES (INCLUDING 16 DRUM SETS, 1 SFX SET) • TEMPERAMENT: 8 TYPES, SELECTABLE TONIC • STRETCHED TUNING: 2 TYPES • MASTER TUNING: 415.3 HZ TO 466.2 HZ (ADJUSTABLE IN INCREMENTS OF 0.1 HZ) • TRANSPOSE: KEY TRANSPOSE (-6 TO +5 IN UNITS OF SEMITONE), PLAYBACK TRANSPOSE (-24 TO +24 IN UNITS OF SEMITONE)	CONFORMS TO GM2/GS/XG LITE • MAX. POLYPHONY: 64 VOICES • TONES: 6 GROUPS 400 TONES, 20 DRUM SETS • MASTER TUNING: 427.4 HZ TO 452.6 HZ (ADJUSTABLE IN INCREMENTS OF 0.1 HZ) • TRANSPOSE: KEY TRANSPOSE (-6 TO +6), DATA TRANSPOSE (-24 TO +24), ALL TRANSPOSE (-6 TO +6)
EFFECTS	REVERB (12 TYPES, 127 LEVELS) CHORUS, ROTARY, AND 60 OTHER TYPES, ADVANCED 3D, GRAND SPACE, DYNAMIC SOUND EMPHASIS (3 TYPES), EQUALIZER (5 BANDS, MASTER LEVEL)	REVERB (8 TYPES) CHORUS, ROTARY, AND 32 OTHER TYPES	REVERB (8 TYPES), CHORUS, ROTARY, AND 46 MULTI-FX
ARRANGER	MUSIC STYLES (STYLE SEARCH BY TERMS AND BY LETTERS): 6 GROUPS 265 STYLES X 3 TYPES (STYLE ORCHESTRATOR) • MUSIC ASSISTANT (SEARCH BY TERMS AND BY LETTERS): OVER 570 SETS • VISUAL MUSIC ASSISTANT, PROGRAMMABLE MUSIC STYLES: STYLE CONVERTER, STYLE COMPOSER • MELODY INTELLIGENCE: 24 TYPES	MUSIC STYLES (STYLE SEARCH BY TERMS AND BY LETTERS): 6 GROUPS 230 STYLES (X 3 TYPE STYLE ORCHESTRATOR) • MUSIC ASSISTANT (SEARCH BY TERMS AND BY LETTERS): OVER 370 SETS • VISUAL MUSIC ASSISTANT • PROGRAMMABLE MUSIC STYLES: STYLE CONVERTER • MELODY INTELLIGENCE: 24 TYPES	MUSIC STYLES: 6 GROUPS 170 STYLES X 3 TYPES (STYLE ORCHESTRATOR) • MUSIC ASSISTANT: 150 SETS • MELODY INTELLIGENCE: 18 TYPES
USER PROGRAMS	INTERNAL: 36 • EXTERNAL MEMORY: MAX. 99 SETS	INTERNAL: 36 • EXTERNAL MEMORY: MAX. 99 SETS	INTERNAL: 32 • EXTERNAL MEMORY: MAX. 99 SETS
METRONOME	TEMPO: QUARTER NOTE = 20 TO 250, BEAT: 2/2, 0/4, 2/4, 3/4, 4/4, 5/4, 6/4, 7/4, 3/8, 6/8, 9/8, 12/8 • VOLUME: 10 LEVELS • METRONOME PATTERN: 11 PATTERNS • METRONOME SOUND: 8 TYPES	TEMPO: QUARTER NOTE = 20 TO 250 • BEAT: 2/2, 0/4, 2/4, 3/4, 4/4, 5/4, 6/4, 7/4, 3/8, 6/8, 9/8, 12/8 • VOLUME: 10 LEVELS • METRONOME PATTERN: 11 PATTERNS • METRONOME SOUND: 8 TYPES • RHYTHM 59 PATTERN	TEMPO: QUARTER NOTE = 20 TO 250 • BEAT: 1/4, 2/4, 3/4, 4/4, 5/4, 6/4, 7/4, 3/8, 6/8, 9/8, 12/8 • VOLUME: 127 LEVELS • METRONOME PATTERN: 1 PATTERN • METRONOME SOUND: 1 TYPE
COMPOSER	TRACKS: 5 TRACKS / 16 TRACKS • SONG: 1 SONG • NOTE STORAGE: APPROX. 30,000 NOTES • RESOLUTION: 120 TICKS PER QUARTER NOTE • RECORDING METHOD: REALTIME (REPLACE, MIX, AUTO PUNCH IN, MANUAL PUNCH IN, LOOP, TEMPO), STEP (CHORD SEQUENCER), BEAT MAP • EDIT: COPY, QUANTIZE, DELETE, INSERT, ERASE, TRANSPOSE, PART EXCHANGE, NOTE EDIT, PC EDIT	TRACKS: 5 TRACKS/16 TRACKS • SONG: 1 SONG • NOTE STORAGE: APPROX. 30,000 NOTES • RESOLUTION: 120 TICKS PER QUARTER NOTE • RECORDING METHOD: REALTIME (REPLACE, MIX, AUTO PUNCH IN, MANUAL PUNCH IN, LOOP, TEMPO), STEP (CHORD SEQUENCER), BEAT MAP, EDIT: COPY, QUANTIZE, DELETE, INSERT, ERASE, TRANSPOSE, PART EXCHANGE, NOTE EDIT, PC EDIT	TRACKS: 5 TRACKS/16 TRACKS • SONG: 1 SONG • RESOLUTION: 120 TICKS PER QUARTER NOTE • RECORDING METHOD: NEW SONG/SINGLE/PUNCH IN/OUT
OTHER FUNCTIONS	TOUCH THE NOTES, REPLAY, SUPER TONES, PIANO DESIGNER, VISUAL LESSON, WONDERLAND/GAME, DEMO, AUDITION, PANEL LOCK, V-LINK, BMP EXPORT, USER IMAGE DISPLAY	TOUCH THE NOTES, REPLAY, WONDERLAND/GAME, DEMO, AUDITION, PANEL LOCK, V-LINK, BMP EXPORT	DEMO, PANEL LOCK, V-LINK
EXTERNAL FUNCTIONS	USB FLASH MEMORY • FLOPPY DISK DRIVE (FOR SONG DATA, NOT AUDIO FILES) • PLAYABLE SOFTWARE: [SONG] STANDARD MIDI FILES (FORMAT 0/I), ROLAND ORIGINAL FORMAT (I-FORMAT) [MUSIC STYLE] MSA, MSD, MSE • SAVE [SONG] STANDARD MIDI FILES (FORMAT 0), ROLAND ORIGINAL FORMAT (I-FORMAT) [MUSIC STYLE] MSE • AUDIO FILE: WAV FORMAT (44.1 kHz 16-BIT LINEAR STEREO)	FILES: MAX. 99 SONGS, MAX. 99 USER STYLES, MAX. 99 USER PROGRAM SETS • PLAYABLE SOFTWARE: [SONG] STANDARD MIDI FILES (FORMAT 0/I), ROLAND ORIGINAL FORMAT (I-FORMAT) [MUSIC STYLE] MSA, MSD, MSE • SAVE: [SONG] STANDARD MIDI FILES (FORMAT 0), ROLAND ORIGINAL FORMAT (I-FORMAT) [MUSIC STYLE] MSE	DISK: MAX. 99 SONGS, MAX. 99 USER STYLES, MAX. 99 USER PROGRAM SETS • PLAYABLE SOFTWARE [SONG] STANDARD MIDI FILES (FORMAT 0/I), ROLAND ORIGINAL FORMAT (I-FORMAT), [MUSIC STYLE] MSA, MSD, MSE • SAVE [SONG] STANDARD MIDI FILES (FORMAT 0)
INTERNAL MEMORY	INTERNAL SONGS (SONG SEARCH BY TERMS AND BY LETTERS): OVER 190 SONGS • USER MEMORY: MAX. 200 SONGS ON FAVORITES, MAX. 99 USER STYLES, MAX. 99 USER PROGRAM SETS	INTERNAL SONGS (SONG SEARCH BY TERMS AND BY LETTERS): OVER 184 SONGS • USER MEMORY: MAX. 200 SONGS ON FAVORITES, MAX. 99 USER STYLES, MAX. 99 USER PROGRAM SETS	OVER 50 SONGS
OTHER	RATED POWER OUTPUT: 60 W x 2 • SPEAKERS: 20 CM x 2, 10 CM x 2, 5 CM x 2 • DISPLAY: BOUNCING BEAT INDICATOR, GRAPHICAL COLOR TOUCHSCREEN 320 x 240 DOT (BACKLIT LCD) • NOTATION: GRAND STAFF, G CLEF STAFF, F CLEF STAFF, WITH NOTE NAME, LYRICS, CHORDS, FINGERING • LANGUAGE: ENGLISH, JAPANESE, GERMAN, FRENCH, SPANISH • LYRICS: YES (BUILT-IN, EXTERNAL DISPLAY, MIDI OUTPUT) • ONE TOUCH PROGRAM: ONE TOUCH PIANO, ONE TOUCH ARRANGER • PEDALS: DAMPER PEDAL (HALF-PEDAL RECOGNITION), SOFT PEDAL (HALF-PEDAL RECOGNITION, FUNCTIONS ASSIGNABLE), SOSTENUTO PEDAL (FUNCTIONS ASSIGNABLE) • VOCAL EFFECTS: ECHO, VOICE TRANSFORMER, VOCAL KEYBOARD, HARMONIST • CONNECTORS: USB MEMORY CONNECTOR, FDD CONNECTOR, OUTPUT JACKS (L/MONO, R), INPUT JACKS (L/MONO, R), MIC INPUT JACK, HEADPHONES JACK (STEREO) x 2, MIDI IN CONNECTOR x 2, MIDI OUT CONNECTOR, USB CONNECTOR, EXT DISPLAY CONNECTOR (15-PIN D-SUB TYPE), VIDEO OUT CONNECTOR, EXPRESSION PEDAL JACK • POWER SUPPLY: AC 115V, AC 117V, AC 220V, AC 230V, AC 240V (50/60Hz) • POWER CONSUMPTION: 155W	RATED POWER OUTPUT: 40 W x 2 • SPEAKERS: 20 CM x 2, 5 CM x 2 • DISPLAY: BOUNCING BEAT INDICATOR, GRAPHICAL MONO LCD 320 x 240 DOT (BACKLIT LCD) • NOTATION: GRAND STAFF, G CLEF STAFF, F CLEF STAFF, WITH NOTE NAME, LYRICS, CHORDS, FINGERING • LANGUAGE: ENGLISH, JAPANESE, GERMAN, FRENCH, SPANISH • LYRICS: YES (BUILT-IN, MIDI OUTPUT) • ONE TOUCH PROGRAM: ONE TOUCH PIANO, ONE TOUCH ARRANGER • PEDALS: DAMPER PEDAL (HALF-PEDAL RECOGNITION), SOFT PEDAL (HALF-PEDAL RECOGNITION, FUNCTIONS ASSIGNABLE), SOSTENUTO PEDAL (FUNCTIONS ASSIGNABLE) • VOCAL EFFECTS: ECHO • CONNECTORS: OUTPUT JACKS (L/MONO, R), INPUT JACKS (L/MONO, R), MIC INPUT JACK, HEADPHONES JACK (STEREO) x 2, MIDI IN CONNECTOR, MIDI OUT CONNECTOR, USB CONNECTOR, EXPRESSION PEDAL JACK • POWER SUPPLY: AC 115V, AC 117V, AC 220V, AC 230V, AC 240V (50/60Hz) • POWER CONSUMPTION: 90W	RATED POWER OUTPUT: 25 W x 2, SPEAKERS: 20 CM x 2 • DISPLAY: BOUNCING BEAT INDICATOR, CUSTOM LCD (BACKLIT LCD) • LYRICS: NO (ONLY VIA MIDI OUTPUT) • ONE TOUCH PROGRAM: ONE TOUCH PIANO, ONE TOUCH ARRANGER • PEDALS: DAMPER PEDAL, SOFT PEDAL (FUNCTIONS ASSIGNABLE), SOSTENUTO PEDAL (FUNCTIONS ASSIGNABLE) • CONNECTORS: OUTPUT JACKS (L/MONO, R), INPUT JACKS (L/MONO, R), HEADPHONES JACK (STEREO) x 2, MIDI IN CONNECTOR, MIDI OUT CONNECTOR, USB CONNECTOR, EXPRESSION PEDAL JACK • POWER SUPPLY: AC 115 V, AC 117 V, AC 220 V, AC 230 V, AC 240 V (50/60 Hz) • POWER CONSUMPTION: 70W
DIMENSIONS	(INCLUDING PIANO STAND) 56 (W) x 21-11/16 (D) x 35-1/2 (H) INCHES • WEIGHT (INCLUDING PIANO STAND): 228 LBS	(INCLUDING PIANO STAND AND MUSIC REST) 56 (W) x 21-11/16 (D) x 36-1/4 (H) INCHES • WEIGHT (INCLUDING PIANO STAND): 155 LBS, 7 OZ	(INCLUDING PIANO STAND), 55 1/4 (W) x 25-3/8 (D) x 35 (H) INCHES • WEIGHT (INCLUDING THE PIANO STAND): 133 LBS, 7 OZ
ACCESSORIES	QUICK START, OWNER'S MANUAL, ROLAND 60 CLASSICAL PIANO MASTERPIECES, REMOTE CONTROLLER, DRY-CELL BATTERIES, USB INSTALLATION GUIDE CD-ROM (ROLAND DIGITAL PIANO USB DRIVER), POWER CORD, HEADPHONES HOOK, ANTI-THEFT LOCK SCREWS	ROLAND 60 CLASSICAL PIANO MASTERPIECES, USB INSTALLATION GUIDE CD-ROM (ROLAND DIGITAL PIANO USB DRIVER), POWER CORD, HEADPHONES HOOK	USB INSTALLATION GUIDE CD-ROM (ROLAND DIGITAL PIANO USB DRIVER), POWER CORD, HEADPHONES HOOK
OPTIONS	USB MEMORY, FLOPPY DISK DRIVE, EXPRESSION PEDAL, CF/CD RECORDER	EXPRESSION PEDAL, CF/CD RECORDER	EXPRESSION PEDAL, CF/CD RECORDER



Roland

KR-103/105/107

KR SERIES

digital intelligent pianos



Stunning Sounds,
Amazing Playability,
Unmatched
Interactivity
and Ease

COMBINING THE WORLD'S FINEST SOUND, PERFORMANCE, AND INTERACTIVE EDUCATIONAL TECHNOLOGIES, ROLAND'S NEW KR INTELLIGENT DIGITAL PIANOS ARE THE PERFECT MUSICAL CENTERPIECES FOR HOMES AND CLASSROOMS ALIKE. WITH ULTRA-REALISTIC GRAND PIANO TOUCH AND SOUND, FRIENDLY VISUAL NAVIGATION, ENHANCED INTERNAL SPEAKER SYSTEMS, NEW MUSIC STYLES AND MUSIC ASSISTANTS, THE KR-SERIES SETS A NEW STANDARD FOR SOUND, PERFORMANCE, AND INTERACTION. EXPERIENCE ONE TODAY!

the piano

REDEFINED

THE NEW TOP-OF-THE-LINE KR-107 PIANO INCORPORATES THE FINEST OF ROLAND'S POWERFUL FEATURES, YET IT'S BEAUTIFULLY EASY TO NAVIGATE. WITH THE PUSH OF A SINGLE BUTTON, YOU CAN BRING A STUNNING GRAND PIANO TO YOUR FINGERTIPS, OR ACTIVATE AN ENTIRE BAND FOR AUTO ACCOMPANIMENT. ENJOY THE HUNDREDS OF NEW AND EXCITING MUSICAL STYLES PACKED INTO THIS FLAGSHIP INSTRUMENT. AN AMPLE 128 VOICES OF POLYPHONY ENSURE THAT NOTES WON'T DROP OUT AS YOU PLAY. THE RICH, IMMERSIVE 6-SPEAKER SYSTEM WITH ADVANCED 3D SOUND WILL FILL YOUR ROOM WITH BEAUTIFUL MUSIC. THE INTUITIVE AND EDUCATIONAL MUSIC ASSISTANT, VISUAL LESSON, AND WONDERLAND FEATURES, PLUS THE ABILITY TO PRINT YOUR MUSICAL SCORES AND DISPLAY YOUR MUSIC IN A VARIETY OF FORMATS ON THE COLOR DISPLAY, CULMINATE IN AN INSTRUMENT THAT STANDS AT TOP OF ITS CLASS.



ELEGANT EXTERIOR
THE KR-107 IS AVAILABLE IN THE FOLLOWING FINE FINISHES:

-  KR-107-AK OAK
-  KR-107-PF POLISHED FRUITWOOD
-  KR-107-MH MAHOGANY
(PICTURED LEFT)
-  KR-107-SC SATIN CHERRY
-  KR-107-PE POLISHED EBONY
-  KR-107-SW SATIN WALNUT

GREAT SOUNDS

Enjoy a rich, colorful pallet of musical instruments and sounds packed into one keyboard. The KR-107 starts with an authentic and detailed piano that simulates every nuance of a true grand, including the sound of the hammers as they strike the strings and the sounds made as the keys are released. Then explore the hundreds of other sounds onboard the KR-107, including orchestral instruments, guitars, basses, drum kits, and ultra-realistic organs that utilize Roland's acclaimed tonewheel-modeling technology.



GRAND-PIANO FEEL

The KR-107 features Roland's finest Progressive Hammer Action keyboard with Escapement, which reproduces the feel of a true grand piano with firm, weighty touch in the lower registers, lighter response in the upper registers, and the distinctive "click" (escapement) sensation that's produced when a grand piano's keys are played. In addition to the KR-107's adjustable key weight, a Hammer Response function is also included.



PIANO DESIGNER

The factory piano sounds provided with the KR-107 are stunning in realism and playability, but if you'd like to customize the sounds, the "Piano Designer" feature allows you to do just that. Make adjustments to the piano's string, damper, and key-off resonance, then save your new pianos for future recall.



TWIN-PIANO MODE

This handy feature allows two players to perform simultaneously on the same keyboard. It's as easy as pressing the front-panel Super Tones button followed by the Twin Piano button on the touchscreen. Four hands of fun!



GRAND SOUND

With its six high-quality internal speakers and amplification system built in, the KR-107 delivers a clear, powerful sound. You'll be amazed at how immersive the sound is, especially when the Advanced 3D spatial effects and Dynamic Emphasis feature (which adds clarity and liveliness) are engaged.



Flagship of the KR Family

KR-107

VISUAL INTERFACE

The KR-107 is equipped with a color touchscreen for friendly, visual navigation. Most operations can be carried out easily just by touching the screen. And if you want to display your musical scores or lessons on an even bigger screen for group viewing, the KR-107 comes with external VGA and video outputs for connecting to a separate computer monitor or TV.

DIGISCORE

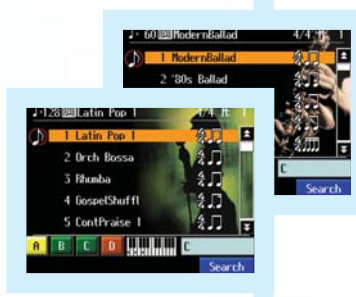
DigiScore brings new musical possibilities and enjoyment to playing and practicing the piano. The "Touch The Notes" feature lets you actually touch a note (or series of notes) onscreen for instant audible playback. Explore the handy "Auto-Sync DigiScore" feature, which scrolls the onscreen sheet music in sync with your performance. No more frantic page-turning as you play.

VISUAL LESSON

The KR-107's "Visual Lesson" feature makes practice fun and effective. You can use this tool to score the results of your performances and find out which notes have been played differently than those indicated in the notation.

SONGS & STYLES

You won't believe how much music can come from one instrument. The KR-107's library of onboard Music Styles spans a wide variety of genres, from pop to rock, jazz to gospel, country, and more, all with an incredibly realistic human sound and feel; many of the internal drum and percussion patterns were recorded by master session drummers using Roland's amazing V-Drums. Bring your next party or performance to life with the dynamic big band, Latin, contemporary or classic favorites built into this instrument.



WONDERLAND

Wonderland is a colorful learning environment for listening to a variety of instruments and performances, and for playing interactive musical games. Great for students or anyone interested in expanding their musical knowledge.

VISUAL MUSIC ASSISTANT

There are over 570 Visual Music Assistant songs onboard the KR-107, each with a variety of preset variations, for professional-sounding intelligent accompaniment. Just play a chord, and the accompaniment follows your lead! Settings are displayed in a manner that's easy to grasp.

COLOR BMP EXPORT

Musical notation that you view or create on the KR-107's can be exported to a computer as a color .BMP file. You can also take advantage of the KR-107's Direct-To-Printer feature, which allows you to save your notation to a USB memory key, and plug it directly into a USB-equipped printer.

KARAOKE

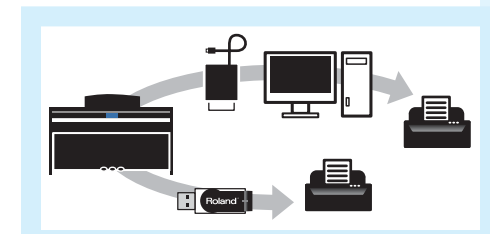
The KR-107 offers a microphone-input jack for karaoke sing-along with Standard MIDI Files. You can also add harmony to your singing, or apply a variety of vocal effects, such as Voice Transformer to dramatically change the sound of your voice.

REMOTE CONTROL

For the ultimate in entertainment convenience, you can control many of the KR-107's features from the wireless remote control (included). Select song styles and sounds, change volume and tempo, and more from this handy remote.

USB

Three USB ports are built into the KR-107. One port is dedicated as USB-MIDI interface, providing convenient communication between the KR-107 and computers. Another port is provided for storing and loading songs, Standard MIDI Files, audio (WAV files), notation, and more via optional USB Flash Memory. The third port is for use with Roland's USB-equipped FD-01A floppy disk drive.



KR-107

Flagship of the KR Family

OPTIONS

Add functionality and convenience to your KR-107 with the following add-ons from Roland:



FD-01A
USB FLOPPY DISK DRIVE



M-UF 128
USB MEMORY KEY



EV-5
EXPRESSION PEDAL



CD-2
CF/CD RECORDER

AS THE MIDDLE MEMBER OF THE NEW KR SERIES, THE KR-105 BRINGS MANY OF ROLAND'S FINEST FEATURES TO A MORE AFFORDABLE PRICE RANGE. IT OFFERS TOP-QUALITY PIANO SOUNDS, A TOUCH-SCREEN INTERFACE, DIGISCORE, NEW STYLES, VISUAL MUSIC ASSISTANT, USB MIDI, BUILT-IN EXPRESSION PEDAL, AND MORE. THE KR-105 IS IDEAL FOR EDUCATORS, STUDENTS, AND PIANO HOBBYISTS ALIKE.

PROGRESSIVE HAMMER ACTION

The KR-105 is outfitted with a high-quality Progressive Hammer-Action Keyboard, which simulates a grand piano's heavy-to-light key response from lower to upper octaves. Play the KR-105 and you'll agree – it feels as great as it sounds.

TONES

There are 646 tones built into the KR-105, including Roland's finest grand-piano sounds. From classical instruments to contemporary, pianos to percussion, the KR-105's diverse soundset will cover all of your musical bases.

LCD TOUCHSCREEN

Pilot the KR-105 in style with the stylish, easy-to-read touchscreen interface. Just point and touch!

WONDERLAND

Roland's popular Wonderland is included with the KR-105, an engaging environment for listening to a variety of instruments and performances, and for playing interactive musical games. Great for students or anyone interested in expanding their musical knowledge.

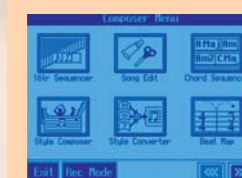
EV-5 EXPRESSION PEDAL



CD-2 CF/CD RECORDER



OPTIONS



VISUAL MUSIC ASSISTANT

Visual musical accompaniment styles with an incredibly realistic human feel – that's what you get in the KR-105. And with intuitive visual navigation, this instrument puts you in direct touch with styles that sound great and are easy to control. Just play a chord, and the accompaniment intelligently follows your lead!

DIGISCORE

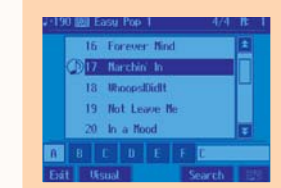
Roland's innovative DigiScore feature brings new musical possibilities and enjoyment to playing and practicing the piano. Interact with your music via the "Touch The Notes" feature, which lets you actually touch a note (or series of notes) onscreen for instant audible playback.

QUICK SELECT

All of the KR-105's main functions, including playing back songs, displaying notation, running the automatic accompaniment, and selecting tones, can be accomplished quickly using the touchscreen and accompanying front-panel buttons. Streamlined and simple.


LIVE DRUMMER STYLES


The musical patterns included with the KR-105 are dynamic and true to life. Many of the drum and percussion patterns were recorded by master session drummers using Roland's V-Drums, providing amazing realism. Delight, entertain, and impress your friends by incorporating these action-packed backing tracks into your performances.




ELEGANT EXTERIOR
THE KR-105 IS AVAILABLE IN THE FOLLOWING FINE FINISHES:

 KR-105-AK OAK

 KR-105-MH MAHOGANY (PICTURED LEFT)

 KR-105-PE POLISHED EBONY

 KR-105-SC SATIN CHERRY

Refined Piano with Essential Features

KR-105

THE KR-103 PROVIDES A COST-EFFECTIVE WAY FOR ENTRY-LEVEL PIANO STUDENTS AND HOBBYISTS TO EXPERIENCE THE MAGIC OF ROLAND'S ACCLAIMED KR SERIES. THE KR-103 IS 19-PART MULTITIMBRAL, WITH THREE PARTS THAT CAN BE PLAYED VIA THE KEYBOARD (UPPER, LAYER, AND LOWER). THE UPPER PART CAN BE USED TO PLAY PIANO, MELODIES, OR FOR DRUMMING, FOR EXAMPLE, WHILE THE LOWER AND LAYER PARTS ALLOW YOU TO QUICKLY ADD A SECOND SOUND TO YOUR SOLO PLAYING. IT'S A VIRTUAL BAND (OR ORCHESTRA) IN ONE INSTRUMENT!



ELEGANT EXTERIOR
THE KR-103 IS AVAILABLE IN THE FOLLOWING FINE FINISH:

KR-103-MH MAHOGANY (PICTURED LEFT)

COMPACT PROGRESSIVE HAMMER ACTION

The KR-103 is outfitted with Roland's Compact Progressive Hammer-Action keyboard, which simulates a real grand piano by providing a heavier touch in the lower octaves that gets increasingly lighter in the upper range. This keyboard has many of the same design elements as Roland's acclaimed Progressive Hammer-Action Keyboard, but its keyboard-action mechanism is much more compact and lightweight.

GREAT SOUNDS

The KR-103's sounds are vibrant and realistic. Many of the sounds have been refined and processed to provide added color and impact. Combined with the new amplification system, the KR's sounds will inspire and impress, from crystal clear high end to powerful low frequencies.

LCD

Navigating a state-of-the-art instrument has never been friendlier, thanks to the KR-103's attractive LCD with accompanying front-panel buttons. No more fumbling to find the right menu or button.

MUSIC STYLES

The KR-103 comes loaded with more than 170 all-new Music Styles prepared by Roland's legendary Style foundry. Each pattern contains an Intro, Original, Variation, Fill-In, and Ending element, with additional options via the Style Orchestrator buttons.

MUSIC ASSISTANT

150 Music Assistant songs are onboard the KR-103 to accompany you as you perform. Just play a chord, and the accompaniment intelligently follows your lead!

**EV-5
EXPRESSION
PEDAL**

**CD-2
CF/CD
RECORDER**



OPTIONS

Attractive Entry-Level Intelligent Piano

KR-103

Free Manuals Download Website

<http://myh66.com>

<http://usermanuals.us>

<http://www.somanuals.com>

<http://www.4manuals.cc>

<http://www.manual-lib.com>

<http://www.404manual.com>

<http://www.luxmanual.com>

<http://aubethermostatmanual.com>

Golf course search by state

<http://golfingnear.com>

Email search by domain

<http://emailbydomain.com>

Auto manuals search

<http://auto.somanuals.com>

TV manuals search

<http://tv.somanuals.com>