

SonicCell Expandable Synthesizer Module and Audio Interface



Using SonicCell with GarageBand™

© 2008 Roland Corporation U.S.
All rights reserved. No part of this publication may be reproduced in any form without the written permission of Roland Corporation U.S.
Apple™ and GarageBand™ are trademarks of Apple Inc.
Apple Inc. is not associated or affiliated with Roland in any manner.

SCWS06

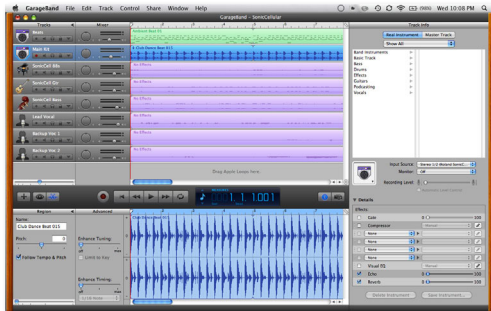
About the Workshop Booklets

Roland's SonicCell is designed for modern musicians. Using USB, It adds a huge set of sounds to your digital audio workstation (or "DAW") without adding to your computer's workload. It's also an audio interface that can get signals from mics, instruments, or other devices to DAW tracks for recording. SonicCell's Editor software allows you to program SonicCell from within your DAW. Onstage, its compact size also makes SonicCell the ideal companion for a laptop DAW, letting you perform and sing along with recorded tracks. Or use it to play back sequences and audio files from a USB memory stick.

Each SonicCell Workshop booklet focuses on one SonicCell topic, and is intended as a companion to the *SonicCell Owner's Manual*. This booklet requires SonicCell O.S. Version 1.11 or higher. You can download the latest SonicCell O.S. for free from www.RolandUS.com.

About This Booklet

This booklet contains instructions for using SonicCell with Apple's GarageBand. First we'll discuss how to use SonicCell's synth sounds with GarageBand. Next, we'll talk about SonicCell as an audio interface, telling you how to record live audio from SonicCell into GarageBand.



We'll assume you've installed and know how to operate GarageBand—otherwise, consult GarageBand's built-in documentation in its Help menu. We'll also assume you've read the *Using SonicCell with a DAW* and *Using SonicCell as an Audio Interface* Workshop booklets, that SonicCell and your computer are hooked up and turned on, and that you're listening through SonicCell.

Understanding the Symbols in This Booklet

Throughout this booklet, you'll come across information that deserves special attention—that's the reason it's labeled with one of the following symbols.



A note is something that adds information about the topic at hand.



A tip offers suggestions for using the feature being discussed.



Warnings contain important information that can help you avoid possible damage to your equipment, your data, or yourself.

Configuring GarageBand to Work With SonicCell

Setting Up GarageBand for SonicCell Audio

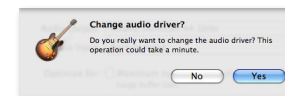


Since GarageBand records only at a sampling rate of 44.1 kHz, set the SonicCell to 44.1 kHz as described in the *Using SonicCell with a DAW* Workshop booklet.

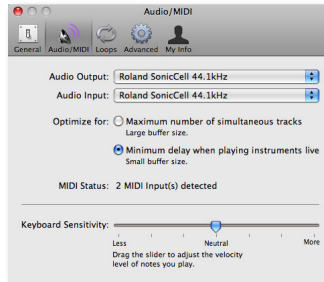
To configure GarageBand so it's using the SonicCell for its inputs and outputs:

- 1 From the GarageBand menu at the top of the screen, select **Preferences...**
- 2 At the top of the Preferences window, click **Audio/MIDI** to open the Audio/MIDI preferences pane of the Preferences window.
- 3 Set both the **Audio Output** and **Audio Input** parameters to **Roland SonicCell 44.1 kHz**.

After each selection GarageBand asks "Change audio driver?" Click **Yes** to proceed both times.



The Audio/MIDI pane should now look like this:



- 4 Click the Advanced Tab at the top of the window, and set Audio Resolution as desired. If you want to
 - *record a CD*—select **Good** so that audio is recorded at 16 bits, as CDs require.
 - *record at higher quality with later conversion*—select **Better** to record at 24 bits, with conversion to 16 bits when it's exported.
 - *record the highest-quality audio*—select **Best** for 24-bit recording and export for uses other than burning a CD.
- 5 Close the Preferences window.

About GarageBand and MIDI

GarageBand is unusual among DAWs in that its soft synths respond to incoming MIDI data, but it doesn't allow you to record MIDI tracks that play sounds in external MIDI devices such as SonicCell.

As a result, to use SonicCell patches with GarageBand, you have to play the patches from a MIDI controller connected to SonicCell, and then record those sounds into GarageBand as audio tracks.

When you've connected a MIDI controller to SonicCell, you can use the controller for playing SonicCell's sounds or GarageBand's own sounds. Each of these operations requires that SonicCell's System USB-MIDI Thru parameter be set correctly.

To:

- *play SonicCell's synth sounds*—turn off SonicCell's USB-MIDI Thru parameter so the incoming MIDI data goes to SonicCell's tone generator.
- *play GarageBand's soft synths*—turn on SonicCell's USB-MIDI Thru parameter so the incoming MIDI data passes through SonicCell and into GarageBand for playing its sounds.

Using the SonicCell Editor with GarageBand

The best way to use the SonicCell Editor with GarageBand is to run it as a separate application. This allows you to select the SonicCell patches you'll play from your keyboard, and customize your current SonicCell performance. Here's how to do this.

- 1 On SonicCell, select the PRST 01 Seq: Template performance.
- 2 Locate the the Roland folder in your Applications folder, and then open it to reveal the SonicCell Editor folder.
- 3 Open the SonicCell Editor folder, and double-click the SonicCell Editor application to launch it.

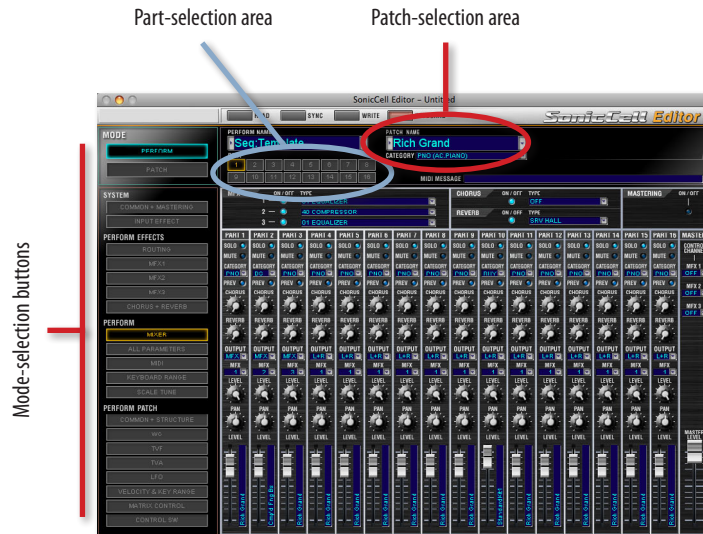


The Editor window opens after exchanging data with SonicCell.



When you're done, go back to the SonicCell Editor application and drag it onto the dock, from where it can be more easily found and launched in the future.

Using the SonicCell Editor



You'll find detailed instructions for using the SonicCell Editor in its manual, which you can display by clicking the Help button in the SonicCell Editor window. What follows here are some quick instructions to get you started.



When you're done setting up a performance, save it so you can recall it when you return to work on your song, sending it back to SonicCell to restore its settings for the song.

Selecting a Patch for a Part

You choose each patch you want to use in GarageBand by selecting it for the part that a GarageBand MIDI track is configured to play. Here's how:

- 1 Click the part's number in the PARTS area of the Editor window.
- 2 Select a patch for the part using the controls in the patch-selection area, circled in red above. To select a patch by:
 - *memory location*—click the PATCH NAME parameter's popup arrow to reveal SonicCell's patches organized by their memory locations.

- *category*—click the CATEGORY parameter's popup arrow to reveal SonicCell's patches divided into categories.



You can select performances stored in SonicCell using the PERFORM NAME popup located above the part-selection area.

Digging Deeper

The SonicCell Editor lets you change the current performance's sounds in a range of ways. The mode-selection buttons to the left of the Editor window determine the parameters you see and can edit at any given time. They're divided into the following sections:

- *SYSTEM*—The buttons in this area allow you to set SonicCell's global behavior, and also get quick access to its input effect, a handy thing when you're recording live audio through SonicCell.
- *PERFORM EFFECTS*—These buttons edit the performance's effect setup.
- *PERFORM*—These parameters allow you to control the way each part plays its patch, and lets you add effects to the patch.
- *PERFORM PATCH*—These parameters allow you to dig right inside a part's patch in order to edit it down to its most basic characteristics.



Before using the PERFORM PATCH buttons, be sure to select the part that plays the patch you want to edit. You do this by clicking the part's number in the part-selection area at the top of the window.

Recording Audio from SonicCell in GarageBand



If you haven't yet read the *Using SonicCell as an Audio Interface* Workshop booklet, read it now before proceeding. SonicCell offers lots of audio-interface options you'll want to know about.

Selecting Audio to Record

- 1 Create a new real instrument track.

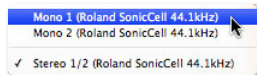


- 2 Select the Basic Track preset in the Track Info panel.

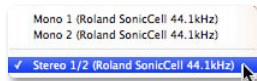


After recording, you can select other presets for your track. They'll add pre-configured effects to the track, and change its icon.

- 3 From the Input Source popup, select a SonicCell input. To record
 - a mic or instrument connected to SonicCell's Neutrik input jack—select **Mono 1 (Roland SonicCell 44.1kHz)**.



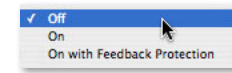
- a stereo device connected to SonicCell's Neutrik and (LINE) R input jacks—select **Stereo 1/2 (Roland SonicCell 44.1kHz)**.



- a SonicCell synth patch in stereo—select **Stereo 1/2 (Roland SonicCell 44.1kHz)**.

Turning Off Software Monitoring

- 1 Set the Monitor popup below Input Source to **Off**.



As we noted in the *Using the SonicCell with a DAW Workshop* booklet, you *can* listen through GarageBand if you want to hear its effects as you record. However, we recommend listening directly through the SonicCell to avoid latency.

What You Hear Is What You Get

SonicCell can produce synth sounds and pass live audio from its inputs at the same time. This means a couple of things:

- When you want to record a SonicCell patch as audio into GarageBand—disconnect any mic or instrument you've connected to SonicCell to keep the resulting synth audio track free of surprise noises.
- When you want to record live audio into GarageBand—be sure not to play any SonicCell patches while the live audio's being recorded to keep the audio signal clean. (You may even want to temporarily disconnect your MIDI controller to be sure.)



You can, if you like, record multiple live audio sounds at the same time in GarageBand, thus capturing a more complete performance. Connect one signal to SonicCell's Neutrik jack and the other to the (LINE) R jack. Send the first jack to one GarageBand real instrument track and the other to a second real instrument track.

Once you've got your audio coming from SonicCell the way you want, record your audio track as you would any other GarageBand real instrument track. Repeat the steps to the left to record additional real instrument tracks.

Troubleshooting

If you experience problems recording or playing back audio, GarageBand's built-in Help provides steps you can take to solve your problem. Search in Help for "optimize"—the page of steps is called "Optimizing GarageBand Performance." In addition to following these steps, raising the Audio Buffer size in the SonicCell's control panel may also help, though it may also increase latency if you're working with soft synths in GarageBand.

The End

We hope you've found this workshop helpful. Keep an eye out for other SonicCell Workshop booklets available for downloading at www.RolandUS.com.

Free Manuals Download Website

<http://myh66.com>

<http://usermanuals.us>

<http://www.somanuals.com>

<http://www.4manuals.cc>

<http://www.manual-lib.com>

<http://www.404manual.com>

<http://www.luxmanual.com>

<http://aubethermostatmanual.com>

Golf course search by state

<http://golfingnear.com>

Email search by domain

<http://emailbydomain.com>

Auto manuals search

<http://auto.somanuals.com>

TV manuals search

<http://tv.somanuals.com>