

MV-8800 Production Studio



Creating a New Project

© 2007 Roland Corporation U.S.

All rights reserved. No part of this publication may be reproduced in any form without the written permission of Roland Corporation U.S.

MV8800WS01

About the MV-8800 Workshop Series

Roland's MV-8800 Production Studio is packed with features for making music. It's a heavy-duty sampler that can do all sorts of things with sounds you sample or import. Its sequencer has 136 MIDI tracks for MIDI sequencing and playing back audio, and its set of editing tools is deep. It's a great box for performing—using its pads or an attached MIDI keyboard—and, of course, it can even burn a CD of your final master mix.

Each MV-8800 Workshop Series booklet focuses on one MV-8800 topic, and is intended as a companion to your *MV-8800 Owner's Manuals*.

About This Booklet

In the MV-8800, it all starts with the “project.” The project is where you create everything and where you keep everything you need for a song or album. This booklet explains projects and tells you how to create one.

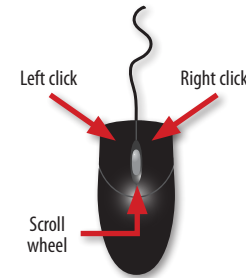
The Buttons, the LCD, or a VGA?

With the MV-8800, you can work on the built-in color LCD or on an optional VGA monitor. You can use the MV-8800's front-panel controls, or a mouse on your VGA screen. No matter how you like to work, there's an easy way to get things done.

Probably the best idea is to work primarily with a mouse on a VGA, using the MV-8800's buttons to quickly get in and out of MV-8800 screens. The procedures in this booklet typically assume you'll be working this way.

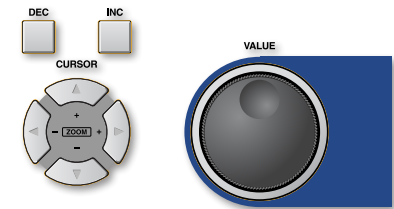
If you're not, don't worry, because the VGA windows and LCD screens are essentially the same. There are clickable VGA icons for all of the MV-8800's buttons. You can also press an onscreen button by clicking your mouse or by pressing an F button on the MV-8800. The main difference has to do with how you deal with settings—or “parameters”—and how you select objects.

If you're using a mouse:



You select parameters and objects with a left click. You change the selected parameter's value by turning the scroll wheel. You can display an object's menu by right-clicking the object.

If you're using the MV-8800's buttons:



You select parameters and objects with the ◀, ▶, ▲, and ▼ CURSOR buttons. Change a selected parameter's value by turning the VALUE dial or by pressing DEC and INC.

Understanding the Symbols in This Booklet

Throughout this booklet, you'll come across information that deserves special attention—that's the reason it's labeled with one of the following symbols.



A note is something that adds information about the topic at hand.



A tip offers suggestions for using the feature being discussed.



Warnings contain important information that can help you avoid possible damage to your equipment, your data, or yourself.

The MV-8800 Project

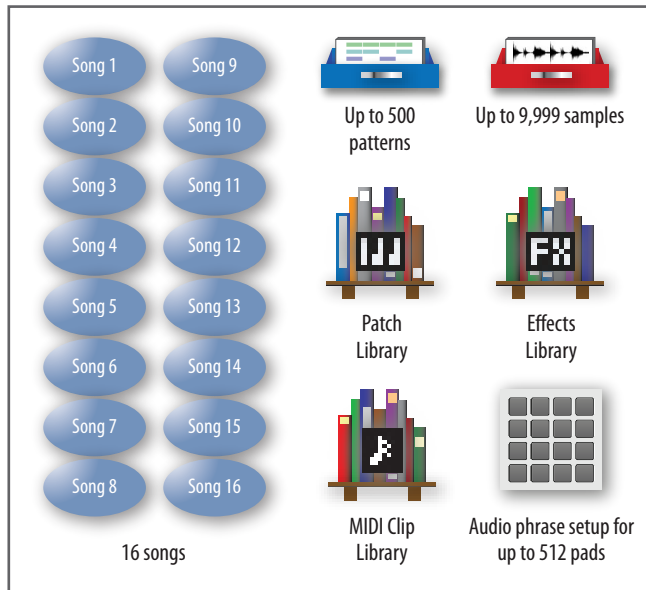
It's important to understand what a project is because:

- on the MV-8800, you're always in a project, even if you haven't done anything to get there.
- a project gives you a place for everything you use in a song or album. You don't have to remember where things are stored because the project does.
- when you save a project, all of its samples, sounds, songs and settings are saved in a single easy operation.

What a Project Is

A project is a container for all the materials you need for what you're working on.

What a Project Holds



16 Songs

While we all know what a song is in the "real world," in the MV-8800, a song is a thing that contains:

- a set of up to 16 patches.
- the sequence and patterns that use them.
- settings for the MV-8800's MFX, chorus, and reverb.

You can use the songs in a project any way you like. Some MV-8800 users:

- work on one tune in each project—using a single project song.
- make different versions of the same tune—with each song holding one of the versions. This is great when you want different mixes of a tune, or want it in a few styles.
- record an entire album in a project—with each song containing one of the album's selections.



Up to 500 Patterns

Patterns are song sections that can be chained together. Each project can hold up to 500 patterns that any song in the project can use. The easiest way to build a song in the MV-8800 is one pattern at a time.



Up to 9,999 Samples

Each project can hold up to 9,999 digital audio recordings, or "samples." Samples are played by patches in the project's songs, and on the pads as audio phrases.



Patch Library

Each project has its own collection, or “library,” of as many as 128 patches that any song in the project can use.



Effects Library

The project effects library really consists of four separate effect libraries: an MFX library, a delay/chorus library, a reverb library, and a Mastering Toolkit library.



You can store your current effect settings as a “preset” in the corresponding library. Any stored preset can be used in any of the project’s songs.

MIDI Clip Library

In each project, you can stash up to 100 favorite musical chunks in its MIDI clip library. The library acts as a sort of project scrapbook, holding bits and pieces that you can use in any of the project’s patterns or songs.



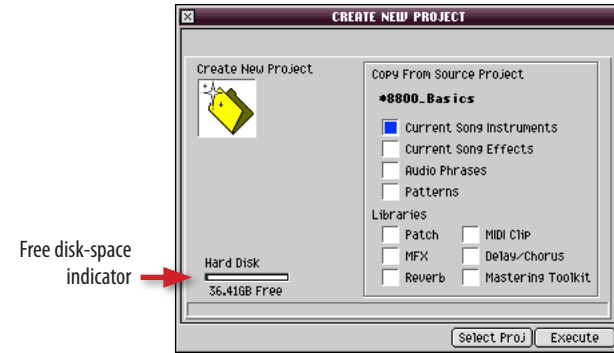
Audio Phrase Setup

You can play any sample from a pad as an audio phrase. Since there are 16 pads, and 32 pad banks, you can assign audio phrases to as many as 512 pads in a project.



How to Create a New Project

- 1 Press PROJECT to display the PROJECT menu.
- 2 Select Create New Project from the Project menu. The CREATE NEW PROJECT window appears.



As you create the project, you can copy various things from:

- *the currently loaded project or song*
- *another project and its most recently loaded song*



Whenever a project is saved, the MV-8800 remembers the song that’s currently loaded so it can return you to that song when you re-load the project.

- 3 If you want to copy things from a project that isn’t currently loaded, click Select Proj, navigate to the desired project, and then click Select.
- 4 Checkmark anything you want to copy from the source project or its song. On the following page, a pair of charts tells you what each checked box gets you.



The advantage of playing a sample as an audio phrase—instead of in a patch—is that an audio phrase can automatically time-stretch or time-shrink in realtime to match the tempo and key of a pattern or song as you tweak its feel.

Project and Song Settings

Checkmark:	To copy:
Current Song Instruments	<i>the set of up to 16 patches used by the source project's song—along with the samples they play—into the first song of the newly created project.</i>
Current Song Effects	<i>the MFX, chorus, and reverb effect settings from the source project's song into the first song of the newly created project.</i>
Audio Phrases	<i>the source project's audio phrase pad assignments along with the samples the pads play.</i>
Pattern	<i>the source project's patterns into the new project.</i>

Project Libraries

Checkmark:	To copy the source project's:
Patch Library	<i>patch library into the new project, along with the samples the patches play.</i>
MFX Library	<i>library of MFX presets into the new project.</i>
Reverb Library	<i>library of reverb presets into the new project.</i>
Midi Clip Library	<i>MIDI clips into the new project.</i>
Delay/Chorus Library	<i>library of delay/chorus presets into the new project.</i>
Mastering Toolkit Library	<i>library of Mastering Toolkit presets into the new project.</i>



You can always load any of the current project's patches into a new project after it's been created. To learn how to load patches from another project, see the MV-8800 Workshop booklet *Loading Patches*.



A pattern always uses the patches of the song it belongs to. To make a copied pattern sound the same in a new project as it did originally, the song that plays it should use the same instrument setup as the song in the original project. You can do this by making sure the desired song is selected when you create your new project, and by checkmarking Current Song Instruments in addition to Patterns in the CREATE NEW PROJECT window.

- 5 When you've finished setting up the new project, click Execute.
- 6 Since the MV-8800 automatically loads a newly created project—replacing the current project—it asks first you if you'd like to save the current project. Click Yes if you want to save it, or No if you don't.



To postpone the creation of the project altogether, press EXIT.

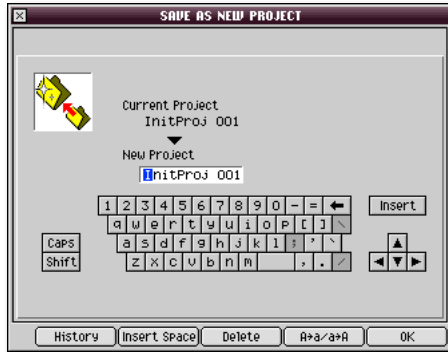
The MV-8800 creates the new project and loads it.

Saving a New Project

- 1 Hold down the SHIFT button and press SHUTDOWN+SAVE PROJECT—the Save Project window appears.



- 2 Click OK—the SAVE AS NEW PROJECT window appears.



In this window, you can name your new project by:

- typing the desired name in the onscreen keyboard with your mouse.
 - using the CURSOR buttons and VALUE dial to select the desired name.
 - typing the desired name on the MV-8800's numeric keypad. Each key has letters printed above it, so you can enter letters the same way as you would on a phone. Repeatedly press a key until the desired letter appears onscreen, and then press the right-hand CURSOR button to move to the next character. Change cases by clicking F4 (A→a/a→A) onscreen.
- 3 When you're done, click OK—the MV-8800 saves your new project on its hard drive.

The End

We hope you've found this workshop helpful. Keep an eye out for other MV-8800 Workshop booklets, all available for downloading at www.RolandUS.com.



For the latest MV-8800 updates and support tools, visit the Roland U.S. Web site at www.RolandUS.com. If you need personal assistance, call our amazing Product Support team at 323-890-3745.



You can rename a project at any time by pressing the PROJECT button to display the PROJECT menu and selecting Rename Project.

Free Manuals Download Website

<http://myh66.com>

<http://usermanuals.us>

<http://www.somanuals.com>

<http://www.4manuals.cc>

<http://www.manual-lib.com>

<http://www.404manual.com>

<http://www.luxmanual.com>

<http://aubethermostatmanual.com>

Golf course search by state

<http://golfingnear.com>

Email search by domain

<http://emailbydomain.com>

Auto manuals search

<http://auto.somanuals.com>

TV manuals search

<http://tv.somanuals.com>