



UA-25 EX

USB AudioCapture

Owner's Manual

Before using this unit, carefully read the sections entitled: "USING THE UNIT SAFELY" and "IMPORTANT NOTES" (p. 3; p. 5). These sections provide important information concerning the proper operation of the unit. Additionally, in order to feel assured that you have gained a good grasp of every feature provided by your new unit, Owner's manual should be read in its entirety. The manual should be saved and kept on hand as a convenient reference.

Copyright © 2009 ROLAND CORPORATION

All rights reserved. No part of this publication may be reproduced in any form without the written permission of ROLAND CORPORATION.

USING THE UNIT SAFELY

INSTRUCTIONS FOR THE PREVENTION OF FIRE, ELECTRIC SHOCK, OR INJURY TO PERSONS

About ⚠ WARNING and ⚠ CAUTION Notices

⚠ WARNING	Used for instructions intended to alert the user to the risk of death or severe injury should the unit be used improperly.
⚠ CAUTION	Used for instructions intended to alert the user to the risk of injury or material damage should the unit be used improperly. * Material damage refers to damage or other adverse effects caused with respect to the home and all its furnishings, as well to domestic animals or pets.

About the Symbols

	The ⚠ symbol alerts the user to important instructions or warnings. The specific meaning of the symbol is determined by the design contained within the triangle. In the case of the symbol at left, it is used for general cautions, warnings, or alerts to danger.
	The symbol alerts the user to items that must never be carried out (are forbidden). The specific thing that must not be done is indicated by the design contained within the circle. In the case of the symbol at left, it means that the unit must never be disassembled.
	The symbol alerts the user to things that must be carried out. The specific thing that must be done is indicated by the design contained within the circle. In the case of the symbol at left, it means that the power-cord plug must be unplugged from the outlet.

ALWAYS OBSERVE THE FOLLOWING

⚠ WARNING

- Do not open or perform any internal modifications on the unit.



- Do not attempt to repair the unit, or replace parts within it (except when this manual provides specific instructions directing you to do so). Refer all servicing to your retailer, the nearest Roland Service Center, or an authorized Roland distributor, as listed on the "Information" page.



- This unit, either alone or in combination with an amplifier and headphones or speakers, may be capable of producing sound levels that could cause permanent hearing loss. Do not operate for a long period of time at a high volume level, or at a level that is uncomfortable. If you experience any hearing loss or ringing in the ears, you should immediately stop using the unit, and consult an audiologist.



⚠ WARNING

- Never install the unit in any of the following locations.



- Subject to temperature extremes (e.g., direct sunlight in an enclosed vehicle, near a heating duct, on top of heat-generating equipment); or are
- Damp (e.g., baths, washrooms, on wet floors); or are
- Exposed to steam or smoke; or are
- Subject to salt exposure; or are
- Humid; or are
- Exposed to rain; or are
- Dusty or sandy; or are
- Subject to high levels of vibration and shakiness.



- Make sure you always have the unit placed so it is level and sure to remain stable. Never place it on stands that could wobble, or on inclined surfaces.



⚠ WARNING

- Do not allow any objects (e.g., flammable material, coins, pins); or liquids of any kind (water, soft drinks, etc.) to penetrate the unit.



- Immediately turn the power off, and request servicing by your retailer, the nearest Roland Service Center, or an authorized Roland distributor, as listed on the "Information" page when:



- If smoke or unusual odor occurs
- Objects have fallen into, or liquid has been spilled onto the unit; or
- The unit has been exposed to rain (or otherwise has become wet); or
- The unit does not appear to operate normally or exhibits a marked change in performance.

- In households with small children, an adult should provide supervision until the child is capable of following all the rules essential for the safe operation of the unit.



- Protect the unit from strong impact. (Do not drop it!)



- DO NOT play a CD-ROM disc on a conventional audio CD player. The resulting sound may be of a level that could cause permanent hearing loss. Damage to speakers or other system components may result.



⚠ CAUTION

- Try to prevent cords and cables from becoming entangled. Also, all cords and cables should be placed so they are out of the reach of children.



- Never climb on top of, nor place heavy objects on the unit.



- Disconnect all cords coming from external devices before moving the unit.



- Always turn the phantom power off when connecting any device other than condenser microphones that require phantom power. You risk causing damage if you mistakenly supply phantom power to dynamic microphones, audio playback devices, or other devices that don't require such power. Be sure to check the specifications of any microphone you intend to use by referring to the manual that came with it.



(This instrument's phanto power: DC 48V, 8mA Max)

IMPORTANT NOTES

Power Supply

- Before connecting this unit to other devices, turn off the power to all units. This will help prevent malfunctions and/or damage to speakers or other devices.

Placement

- Using the unit near power amplifiers (or other equipment containing large power transformers) may induce hum. To alleviate the problem, change the orientation of this unit; or move it farther away from the source of interference.
- This device may interfere with radio and television reception. Do not use this device in the vicinity of such receivers.
- Noise may be produced if wireless communications devices, such as cell phones, are operated in the vicinity of this unit. Such noise could occur when receiving or initiating a call, or while conversing. Should you experience such problems, you should relocate such wireless devices so they are at a greater distance from this unit, or switch them off.
- When moved from one location to another where the temperature and/or humidity is very different, water droplets (condensation) may form inside the unit. Damage or malfunction may result if you attempt to use the unit in this condition. Therefore, before using the unit, you must allow it to stand for several hours, until the condensation has completely evaporated.
- Depending on the material and temperature of the surface on which you place the unit, its rubber feet may discolor or mar the surface. You can place a piece of felt or cloth under the rubber feet to prevent this from happening. If you do so, please make sure that the unit will not slip or move accidentally.

Maintenance

- For everyday cleaning wipe the unit with a soft, dry cloth or one that has been slightly dampened with water. To remove stubborn dirt, use a cloth impregnated with a mild, non-abrasive detergent. Afterwards, be sure to wipe the unit thoroughly with a soft, dry cloth.
- Never use benzine, thinners, alcohol or solvents of any kind, to avoid the possibility of discoloration and/or deformation.

Handling CD-ROMs

- Avoid touching or scratching the shiny underside (encoded surface) of the disc. Damaged or dirty CD-ROM discs may not be read properly. Keep your discs clean using a commercially available CD cleaner.

Copyright

- Recording, duplication, distribution, sale, lease, performance, or broadcast of copyrighted material (musical works, visual works, broadcasts, live performances, etc.) belonging to a third party in part or in whole without the permission of the copyright owner is forbidden by law.
- This product can be used to record or duplicate audio or visual material without being limited by certain technological copy-protection measures. This is due to the fact that this product is intended to be used for the purpose of producing original music or video material, and is therefore designed so that material that does not infringe copyrights belonging to others (for example, your own original works) can be recorded or duplicated freely.
- Do not use this unit for purposes that could infringe on a copyright held by a third party. We assume no responsibility whatsoever with regard to any infringements of third-party copyrights arising through your use of this unit.

Additional Precautions

- Use a reasonable amount of care when using the unit's buttons, sliders, or other controls; and when using its jacks and connectors. Rough handling can lead to malfunctions.
 - When connecting / disconnecting all cables, grasp the connector itself—never pull on the cable. This way you will avoid causing shorts, or damage to the cable's internal elements.
 - To avoid disturbing your neighbors, try to keep the unit's volume at reasonable levels. You may prefer to use headphones, so you do not need to be concerned about those around you (especially when it is late at night).
 - When you need to transport the unit, package it in the box (including padding) that it came in, if possible. Otherwise, you will need to use equivalent packaging materials.
 - Some connection cables contain resistors. Do not use cables that incorporate resistors for connecting to this unit. The use of such cables can cause the sound level to be extremely low, or impossible to hear. For information on cable specifications, contact the manufacturer of the cable.
- * Microsoft, Windows and Windows Vista are registered trademarks of Microsoft Corporation.
 - * Windows® is known officially as: "Microsoft® Windows® operating system."
 - * Apple, Macintosh and Mac OS are registered trademarks of Apple Inc.
 - * Cakewalk is a registered trademark of Cakewalk, Inc.
 - * MMP (Moore Microprocessor Portfolio) refers to a patent portfolio concerned with microprocessor architecture, which was developed by Technology Properties Limited (TPL). Roland has licensed this technology from the TPL Group.
 - * MPEG Layer-3 audio compression technology is licensed from Fraunhofer IIS Corporation and THOMSON Multimedia Corporation.
 - * All product names mentioned in this document are trademarks or registered trademarks of their respective owners.

Contents

USING THE UNIT SAFELY	3
IMPORTANT NOTES	5
Contents of the Package	8
Panel Descriptions	10
Front panel	10
Rear panel.....	13
Driver Installation and Settings	15
Windows Vista users	16
Windows XP users.....	20
Macintosh users.....	24
Verifying that you hear sound.....	28
Basic Connections and Settings.....	30
Basic connections	31
Connecting a microphone or a guitar	32
Connecting a microphone and applying the compressor.....	34
Recording a digital signal into your computer	36
Recording to an MD or other digital device.....	37
Appendices.....	38
Driver settings.....	38
Driver signing option settings (Windows XP).....	39
Reinstalling the driver	40
Removing the driver	40
Power management settings	42
System "Performance" settings (Windows).....	43
System volume settings	44
About standard driver mode.....	45
Troubleshooting	46
Problems when installing the driver.....	46
Problems with settings.....	49
Problems with playback or recording	50
Specifications.....	55
Index	57

Contents of the Package

After you open the package, please check that all items are present.
If anything is missing, contact your dealer.

■ UA-25EX



■ Owner's manual

This is the document you're reading. Keep it at hand for reference when needed.

■ CD-ROMs (2 discs)

* Before you open the included CD-ROM, you must read the "license agreement." Opening the CD-ROM will be taken to mean your acceptance of the license agreement.

UA-25EX Driver CD-ROM

This contains the UA-25EX drivers and demo songs.

Cakewalk Production Plus Pack CD-ROM

This package includes:

- DAW software that lets you experience a premium music production environment
- A sampling synthesizer that's ready for immediate use

For details on using these software, refer to the installation guides and the software help provided on the CD-ROM.

* Use of the demo song supplied with this product for any purpose other than private, personal enjoyment without the permission of the copyright holder is prohibited by law. Additionally, this data must not be copied, nor used in a secondary copyrighted work without the permission of the copyright holder.

* Avoid touching or scratching the shiny underside (encoded surface) of the disc. Damaged or dirty CD-ROM discs may not be read properly. Keep your discs clean using a commercially available CD cleaner.

⚠ WARNING

DO NOT play a CD-ROM disc on a conventional audio CD player. The resulting sound may be of a level that could cause permanent hearing loss. Damage to speakers or other system components may result.



■ USB cable

Use this cable to connect the UA-25EX to the USB connector of your computer.

- * Please use only the included USB cable. If you require a replacement due to loss or damage, please contact the nearest Roland Service Center, or an authorized Roland distributor, as listed on the "Information" page.

■ License agreement

This agreement allows you to use certain software whose copyright is the property of Roland Corporation. You must read this before opening the CD-ROMs.

You'll need to provide the following items

External amplifier, speakers, headphones, and microphone are not included.

The external amplifier, speakers, or headphones that you'll need in order to listen to sounds that are output via the UA-25EX are not included. Nor is there included a microphone for connection to the UA-25EX to input audio. You'll need to obtain these items separately.

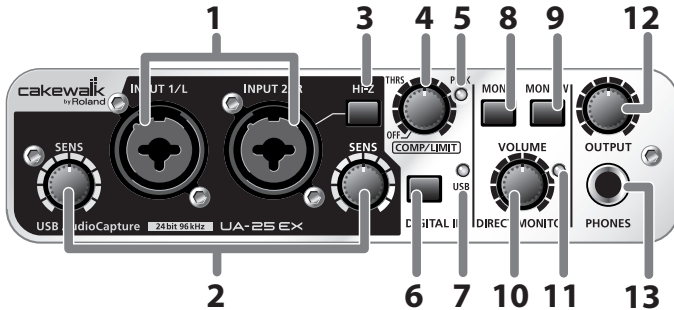
Cables for connecting to an MD or DAT recorder are not included.

You can use an MD or DAT digital recorder to record digital audio, but a cable for connecting your digital device to the UA-25EX is not included. You'll need to obtain this separately.

Panel Descriptions

You must install the driver before you connect the UA-25EX to your computer for the first time. Install the driver as described in “**Driver Installation and Settings**” (p. 15).

Front panel

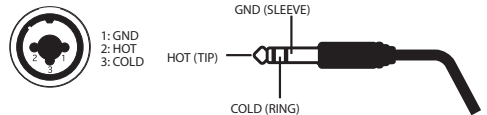
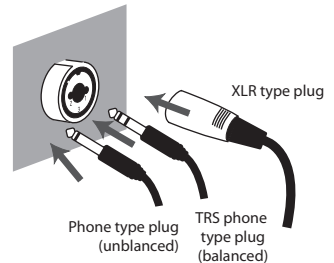


1. Combo input jacks

These are analog audio input jacks with microphone preamps. They accommodate both XLR type and phone type plugs, allowing you to use the type appropriate for the device you're connecting. They also support either balanced or unbalanced connections.

Connect a microphone to XLR type jacks. The XLR type jacks can provide 48 V phantom power, allowing you to connect a phantom-powered condenser microphone. In this case, set the rear panel **Phantom power switch (23)** to the ON position.

* This instrument is equipped with balanced (XLR/TRS) type jacks. Wiring diagrams for these jacks are shown on the right. Make connections after first checking the wiring diagrams of other equipment you intend to connect.





2. Input sensitivity knobs

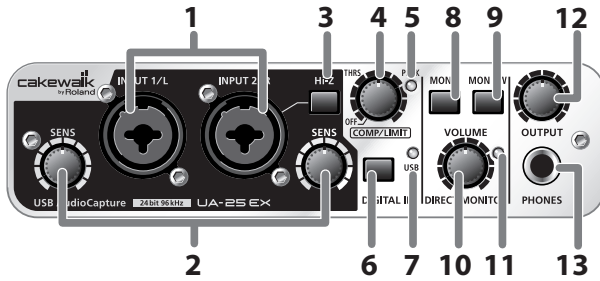
These adjust the input level of the signals that are input from the front panel **combo input jacks (1)**.

3. Input impedance select switch

This lets you select either high impedance (Hi-Z) or low impedance (Lo-Z) as appropriate for the device you've connected to the phone type input jack of **combo input jack (1)** INPUT 2/R.

If you've connected a guitar or bass, turn the **input impedance select switch** on (pressed inward ) to select high impedance (Hi-Z). If you've connected a synthesizer or an analog audio device, turn the **input impedance select switch** off (outward position ) to select low impedance (Lo-Z).

The phone type jack of the **combo input jack** INPUT 1/L is fixed at low impedance (Lo-Z).



4. Compressor/Limiter threshold knob

This adjusts the threshold of the compressor/limiter.

Turning the knob toward the right will lower the level at which the compressor/limiter begins to be applied. If the rear panel **compressor/limiter type switch (22)** is set to compressor 1 (or 2), the gain (makeup gain) will rise as the threshold level is lowered, producing a fat sound.

Turning this all the way to the left will turn off the compressor/limiter.


- * Turning this knob toward the right will strengthen the compressor effect, which may create the impression that the tone is being affected. If this occurs, turn the threshold knob back toward the left until the tonal change is not noticeable.
- * If you want to turn the circuit itself completely off, set the rear panel **compressor/limiter type switch (22)** to the OFF (BYPASS) position.

5. Peak indicator




This indicates the input signal level. Use the **input sensitivity knob (2)** for each input jack to adjust the input level so that the peak indicator does not light.

If the rear panel **compressor/limiter type switch (22)** is set to OFF (BYPASS) position, the peak indicator will light red. The compressor/limiter type switch is set to compressor 1, 2 or Limiter position, the peak indicator will light green.

6. Digital input switch

If you want to record from the digital input, turn this ON (pressed inward ).

This allows you to synchronize with the external digital device connected to the **digital input connector (17)**.

Digital input switch	Status
ON  with a digital device connected to the digital input connector	The input from the digital input connector (17) is sent to the computer (Digital input mode).
OFF 	The input from the combo input jacks (1) is sent to the computer.
ON  with no digital device connected to the digital input connector	The audio signal (sound) that is output from the computer via USB will pass through the UA-25EX and return to the computer (LoopBack mode).

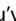
- * In **digital input mode** you will not hear the sound from the computer. The settings of the direct monitor section will be ignored. This means that the **direct monitor switch (9)**, **STEREO/MONO select switch (8)**, and **direct monitor volume (10)** will not do anything.

7. USB indicator

This will light blue if the UA-25EX is connected to your computer via the USB cable and the computer has correctly recognized the UA-25EX.

8. STEREO/MONO select switch (direct monitor section)

This selects whether the input signal from the **combo input jacks (1)** will be monitored in stereo (STEREO) or in monaural (MONO).

If you've connected a guitar only to INPUT 2/R, set this to monaural ( pressed inward). Even if this is set to monaural, the audio signal sent via USB to your computer will be stereo.

* If the **digital input switch (6)** is on, operating the **STEREO/MONO select switch** will not do anything.

9. Direct monitor switch (direct monitor section)

This selects whether the input signal from the **combo input jacks (1)** will be output from the **headphone jack (13)** and **master output jacks (14)**. The direct monitor ON and OFF will change whenever this switch is pushed. The direct monitor ON/OFF status can be controlled directly from ASIO 2.0 compatible software such as Cubase.

Direct monitor switch	Status
ON (direct monitor indicator lit)	The input signal will be output.
OFF (direct monitor indicator unlit)	The input signal will not be output. Use the OFF setting if the audio signal is being passed "through" within the computer, or if you've connected a mixer and are monitoring the input signal directly from the mixer's output.

* In **digital input mode** (p. 11), direct monitor is always ON, regardless of the **direct monitor switch** operation.

10. Direct monitor volume (direct monitor section) knob

This adjusts the volume at which the input signal from the **combo input jacks (1)** is output from the **headphone jack (13)** and **master output jacks (14)**.

If this is turned all the way to the right, the monitored sound will be twice volume (+6 dB).

11. Direct monitor indicator (direct monitor section)

This will light when direct monitor is on, and will be unlit when it is OFF. If the **digital input switch (6)** is turned on, direct monitor will be OFF automatically and the **direct monitor indicator** will be extinguished.

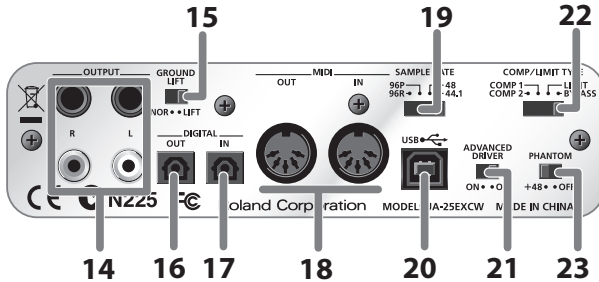
12. Output volume knob

This adjusts the volume that is output from the **headphone jack (13)** and **master output jacks (14)**.

13. Headphone jack

Accepts connection of headphones. This jack will output the same sound as the **master output jacks (14)**. Sound will be output from the **master output jacks** even if headphones are connected.

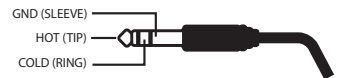
Rear panel



14. Master output jacks (TRS balanced type, RCA phono type)

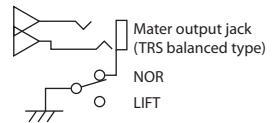
These are output jacks for analog audio signals. The phone jacks and RCA phono jacks output the same signal. You may use whichever type of jack is appropriate for the connected device or the type of cable.

- * The TRS balanced master output jacks are wired as shown on the right. Before you make connections, check the wiring of the equipment you're connecting.



15. Ground lift switch

Normally, you can leave this in the NORMAL (NOR) position. If you experience noise due to a ground loop, you may be able to eliminate the noise by setting this to the LIFT position, so that the sleeve (SLEEVE) pin of the master output TRS balanced jacks is disconnected from ground.



16. Digital output connector (optical)

This is an output connector for digital audio signals. Use this to digitally output audio signals to a digital audio device such as an MD or DAT. Use an optical cable to make connections.

17. Digital input connector (optical)

This is an input connector for digital audio signals. Use this to digitally input audio signals from a digital audio device such as a CD, MD, or DAT. Use an optical cable to make connections.

18. MIDI IN/OUT connectors

These are MIDI connectors which transmit and receive MIDI messages between computer.

- * The MIDI IN/OUT connectors are not available, if you're using the UA-25EX in Standard driver mode (p. 45).

19. Sample rate select switch

This specifies the sample rate at which audio is recorded or played back. If you change the setting of the sample rate select switch, you must close all software, disconnect the USB cable that connects the UA-25EX to your computer, and then reconnect the USB cable.

- * If you are using Standard driver mode (the **Advanced Driver switch** turned off), the sample rate is fixed at 44.1 kHz regardless of the sample rate select switch setting.
- * If you want to use 96 kHz, set the switch to "96R" while recording and to "96P" while playing back.

20. USB connector

Use a USB cable to connect this to your computer.

21. Advanced driver switch

This switches the operating mode between Advanced mode (ON) and Standard mode (OFF). Normally, you can leave this set to Advanced mode (ON).

* If you change this setting, you must disconnect the UA-25EX's USB cable from your computer, and then re-connect it.

Switch	Explanation
ON (Advanced mode)	In this mode you can use the dedicated driver, which allows you to play and record audio with high quality and stable timing.
OFF (Standard driver mode)	In this mode you can use the standard audio driver provided by your operating system. This is convenient if you don't have the dedicated driver, or if you're unable to install the dedicated driver. However, the following limitations apply. <ul style="list-style-type: none"> • The UA-25EX will operate at 44.1 kHz/16-bit mode regardless of the setting of the sample rate select switch (19). • ASIO drivers are not supported. • The MIDI IN/OUT connectors (18) cannot be used.

22. Compressor/Limiter type switch

This selects the type of hardware compressor/limiter that is applied to the input signal from the **combo input jacks (1)**. Use the **compressor/limiter threshold knob (4)** to adjust the threshold of the compressor/limiter.

The UA-25EX provides two type of compressors, each type have different attack time.

Switch	Explanation
Compressor 1 (COMP 1)	A compressor with a short attack time, suitable for vocals.
Compressor 2 (COMP 2)	A compressor with a long attack, suitable for recording instruments such as percussion or acoustic guitar.
Limiter (LIMIT)	This applies mild compression when an unexpected, high-volume signal is input, preventing clipping noise from occurring before the AD converter. * Clipping noise will occur if the input exceeds the range of the limiter.
OFF (BYPASS)	The compressor/limiter circuit will be completely bypassed.

23. Phantom power switch

This is an ON/OFF switch for the phantom power that is supplied to the XLR connectors of the front panel **combo input jacks (1)**.

* You must leave the phantom power turned off unless condenser microphones requiring phantom power are connected to the XLR connectors. Supplying phantom power to a dynamic microphone or to an audio playback device may cause malfunctions. For details on the requirements of your microphone, refer to its owner's manual.

* The UA-25EX's phantom power supply: DC 48 V, 8 mA maximum.

Driver Installation and Settings

The installation procedure and the settings will differ depending on your system. To perform the installation and make settings, follow the three steps listed below for your system.

	Windows Vista	Windows XP	Mac OS X
1. Install the driver ↓	p. 16	p. 20	p. 24
2. Input/output device settings ↓	p. 18	p. 22	p. 25 p. 26
3. Verifying that you hear sound	p. 28	p. 28	p. 28

What is a driver?

A driver is software that transfers data between the UA-25EX and the application software on your computer when the UA-25EX is connected to your computer. The driver sends data from your application software to the UA-25EX, and routes data from the UA-25EX to your application software.

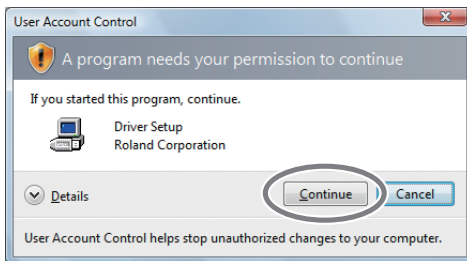
If you want to use the UA-25EX in Standard driver mode, refer to **“About standard driver mode”** (p. 45).

Windows Vista users

Steps to be performed on the UA-25EX itself are marked by a **Operation of the UA-25EX** symbol.
Do not connect the UA-25EX to your computer until you are directed to do so.

Installing the driver

- 1 ▶ Start up Windows without the UA-25EX connected.
 - * Disconnect all USB cables other than those for a USB keyboard and/or USB mouse (if used).
- 2 ▶ Close all currently running software.
- 3 ▶ Insert the included "UA-25EX Driver CD-ROM" into your CD-ROM drive.
 - * If the auto-play dialog appears, click **"Open folder to see files."**
- 4 ▶ On the **CD-ROM**, navigate to the Driver → Vista folder, and double-click the **Setup** icon.
 - * If a message saying **"Driver installation must be performed by an administrator"** appears, log on to Windows as a user whose account has administrative privileges, and perform the installation again.
- 5 ▶ A confirmation screen regarding user account control will appear.
Click [**Continue**].



- 6 ▶ The screen will indicate **"UA-25EX Driver will be installed on your computer."**
Click [**Next**].
 - * If any other message appears, proceed as directed by the message.

- 7** To begin the installation, click [**Next**] once again.
Installation will begin.

If a dialog box related to Windows Security appears, click [**Install**].



The screen will indicate **“Ready to install the driver.”**

- * If any other message appears, proceed as directed by the message.

- 8** **Operation of the UA-25EX** Set the UA-25EX’s Advanced driver switch to the **ON** position.

- * If the Advanced driver switch is set to **OFF**, the installation will not take place as described in the following procedure.

- 9** **Operation of the UA-25EX** Use a USB cable to connect the UA-25EX to your computer.

- * This unit is equipped with a protection circuit. A brief interval (a few seconds) after connecting the USB cable is required before the unit will operate normally.

- 10** The message **“Installing device driver software”** will appear in the lower right corner of the screen, and the driver will be installed automatically.

- * It may take some time (ten seconds or more) until the message appears.
- * If any other message appears, note the content of the message and close it.

- 11** When installation has been completed, the **Driver Setup** dialog box will indicate **“Installation has been completed.”**

Click [**Close**] to close the **Driver Setup** dialog box.

If the **System Settings Change** dialog box appears, click [**Yes**]. Windows will automatically restart.

Next, you need to set your software so it can use the UA-25EX.

Input/output device settings

In order to use the UA-25EX with your software, you'll need to select the UA-25EX as the audio and MIDI input/output device. For details on how to do this, refer to the documentation for your software.

- * If you're unable to select the UA-25EX as the audio input/output device in your software, it may be that a problem has occurred. Refer to "**Problems with settings**" (p. 49) in the Troubleshooting section.

Audio input/output device

Audio output device	OUT (UA-25EX)
Audio input device	IN (UA-25EX)

- * If you're using ASIO compatible software, select the UA-25EX in the ASIO settings of your software.

MIDI input/output device

MIDI output device	UA-25EX
MIDI input device	UA-25EX

- * The Windows Media Player included with Windows Vista cannot use the UA-25EX's MIDI input/output device.

Settings when using the UA-25EX in Windows Media Player

Some software such as Windows Media Player will use the system default playback/recording device for its audio input/output device.

Here's how to specify the UA-25EX as the system default playback device so that it can be used with Windows Media Player.

- * In a later step, you'll use Windows Media Player to play back sample data. Be sure to make the settings described below.

1 ▶ Open the **Control Panel**, click the **Hardware and Sound** and click **Sound**.

- * If you're using the Classic view, double-click **Sound**.

2 ▶ Open the **Playback** tab, select the UA-25EX's **OUT**, and click **[Set Default]**.

3 ▶ Click **[OK]** to complete the setting.

- * If you select the UA-25EX as the default playback device, audio alerts and other sounds from Windows will also be output from the UA-25EX, and therefore will not be heard from your computer's speakers.

Caution when recording or playing back with your software

Check the following points before you use the UA-25EX to record or play back.

- Connect the UA-25EX to your computer before you start up the software you're using.
- Do not disconnect the UA-25EX's USB cable from your computer while your software is running. Close the software you're using before you disconnect the UA-25EX's USB cable from your computer.

This completes driver installation and settings.

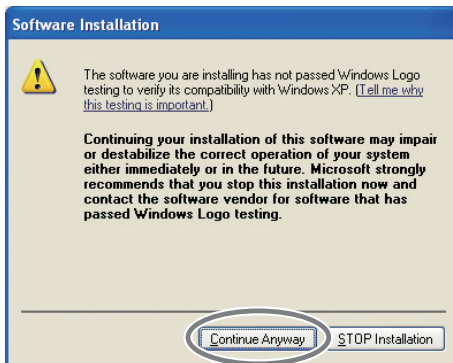
Next, verify that you hear sound from the UA-25EX. → **“Verifying that you hear sound”** (p. 28).

Windows XP users

Steps to be performed on the UA-25EX itself are marked by a **Operation of the UA-25EX** symbol. Do not connect the UA-25EX to your computer until you are directed to do so.

Installing the driver

- 1 ▶ Start up Windows without the UA-25EX connected.
 - * Disconnect all USB cables other than those for a USB keyboard and/or USB mouse (if used).
- 2 ▶ Close all currently running software.
- 3 ▶ Insert the included "UA-25EX Driver CD-ROM" into your CD-ROM drive.
- 4 ▶ In the **CD-ROM**, navigate to the Driver → XP folder, and double-click the **Setup** icon.
 - * If the "**Install Program As Other User**" dialog box appears, click **[Cancel]** to terminate the installation, log on to Windows using an administrator account, and perform the installation once again.
- 5 ▶ The screen will indicate "**UA-25EX Driver will be installed on your computer.**" Click **[Next]**.
 - * If any other message appears, proceed as directed by the message.
- 6 ▶ To begin the installation, click **[Next]**.
If the **Software Installation** dialog box appears, click **[Continue Anyway]** to proceed with the installation.



- * If you are unable to proceed, click **[OK]** to halt the installation, and then change the settings as described in "**Driver signing option settings (Windows XP)**" (p. 39).

The screen will indicate "**Ready to install the driver.**"

- * If any other message appears, proceed as directed by the message.

7

Operation of the UA-25EX Set the UA-25EX's Advanced driver switch to the **ON** position.

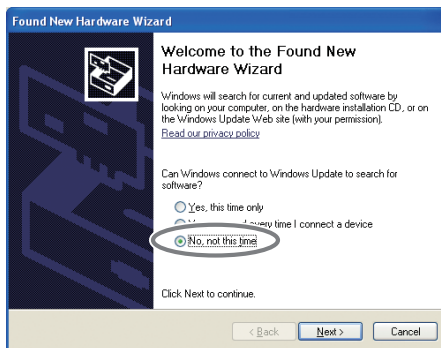
- * If the Advanced driver switch is set to **OFF**, the installation won't take place as described in the following procedure.

8

Operation of the UA-25EX Use a USB cable to connect the UA-25EX to your computer.

- * This unit is equipped with a protection circuit. A brief interval (a few seconds) after connecting the USB cable is required before the unit will operate normally.
1. The message "Found New Hardware" will appear in the lower right corner of the screen, and the Found New Hardware Wizard will appear.
 - * It may take between ten seconds to several minutes until the **Found New Hardware Wizard** appears.

If you are asked whether you want to connect to Windows Update, choose **No** and click **[Next]**.



2. Choose **Install the software automatically (Recommended)**, and click **[Next]**.
3. If the **Hardware Installation** dialog box appears, click **[Continue Anyway]** to proceed with the installation.
 - * If you are unable to proceed, click **[OK]** to halt the installation, and then change the settings as described in "**Driver signing option settings (Windows XP)**" (p. 39).
4. The screen will indicate "**Completing the Found New Hardware Wizard.**" Click **[Finish]**.

9

When installation is complete, the **Driver Setup** dialog box will indicate "**Installation has been completed.**"

Click **[Close]** to close the **Driver Setup** dialog box.

If the **System Settings Change** dialog box appears, click **[Yes]** to restart Windows.

Next, you need to set your software so it can use the UA-25EX.

Input/output device settings

In order to use the UA-25EX with your software, you must select the UA-25EX as the audio and MIDI input/output device. For details on how to make this setting, refer to the documentation for the software you're using.

- * If you're unable to select the UA-25EX as the audio input/output device in your software, it may be that a problem has occurred. Refer to "**Problems with settings**" (p. 49) in the Troubleshooting section.

Audio input/output device

Audio output device	OUT (UA-25EX)
Audio input device	IN (UA-25EX)

- * If you're using ASIO compatible software, select the UA-25EX in the ASIO settings of your software.

MIDI input/output device

MIDI output device	UA-25EX
MIDI input device	UA-25EX

Settings when using the UA-25EX in Windows Media Player

Some software, such as Windows Media Player, may use the system default playback/recording device as its audio and MIDI input/output device.

Here's how to specify the UA-25EX as the system default playback device so that it can be used with Windows Media Player.

- * In a later step, you'll use Windows Media Player to play back sample data. Be sure to make the settings described below.

- 1 Open the **Control Panel**, click **Sounds, Speech, and Audio Devices**, and then double-click the **Sounds and Audio Devices**.
 - * If you're using the Classic view, double-click the **Sounds and Audio Devices** icon.
- 2 Click the **Audio** tab to open it, and in the **Sound playback** area, select **OUT (UA-25EX)**. In the **MIDI Music Playback** area, select **UA-25EX**.
- 3 Click **[OK]** to complete the setting.
 - * If you select the UA-25EX as the default playback device, audio alerts and other sounds from Windows will also be output from the UA-25EX, and therefore will not be heard from your computer's speakers.

Caution when recording or playing back with your software

Check the following points before you use the UA-25EX to record or play back.

- Connect the UA-25EX to your computer before you start up the software you're using.
- Do not disconnect the UA-25EX's USB cable from your computer while your software is running. Close the software you're using before you disconnect the UA-25EX's USB cable from your computer.

This completes driver installation and settings.

Next, verify that you hear sound from the UA-25EX. → **“Verifying that you hear sound”** (p. 28)

Macintosh users

Steps to be performed on the UA-25EX itself are marked by a **Operation of the UA-25EX** symbol.
Do not connect the UA-25EX to your computer until you are directed to do so.

Installing the driver

- * If the **Authenticate** dialog box or the dialog that indicates **“Installer requires that you type your password”** appears during the installation, enter your password and click **[OK]**.
 - * What you actually see on the screen may differ depending on your system.
- 1** ▶ Start up your computer with the UA-25EX disconnected.
 - * Disconnect all USB cables other than those for a USB keyboard and/or USB mouse (if used).
 - 2** ▶ Close all currently running software.
 - 3** ▶ Insert the included “UA-25EX Driver CD-ROM” into your CD-ROM drive.
 - 4** ▶ In the **Driver** folder of the **CD-ROM**, double-click the **UA25EXUSBDriver.pkg**.
A message such as **“This package contains a program that...”** or **“This installer package needs to...”** may appear. If so, click **[Continue]**.
 - 5** ▶ The screen will indicate **“Welcome to the UA-25EX Driver Installer.”**
Click **[Continue]**.
 - 6** ▶ If the screen indicates **“Select a Destination,”** click the drive in which the operating system is installed to select it, and then click **[Continue]**.
 - * Select your startup disk as the install-destination drive.
 - 7** ▶ The screen will indicate **“Easy Install”** or **“Standard Install.”**
Click **[Install]** or **[Upgrade]**.
 - 8** ▶ The screen will indicate **“Installing this software requires you to restart your computer when the installation is done.”**
Click **[Continue Installation]**.
 - 9** ▶ The screen will indicate **“Click Restart to finish installing the software.”**
Click the **[Restart]** to restart your computer.
 - * It may take some time for your Macintosh to restart.

10

Operation of the UA-25EX When your computer has started up, use a USB cable to connect the UA-25EX to your computer.

Turn the UA-25EX's Advanced driver switch **ON**, and use a USB cable to connect the UA-25EX to your computer.

- * This unit is equipped with a protection circuit. A brief interval (a few seconds) after connecting the USB cable is required before the unit will operate normally.

Next, you need to set your software so it can use the UA-25EX.

Audio input/output device settings

In order to use the UA-25EX with your software, you'll need to select the UA-25EX as the audio input/output device. For details on how to do this, refer to the documentation for your software.

Audio output device	UA-25EX 44.1kHz
Audio input device	UA-25EX 44.1kHz

- * The **"44.1kHz"** in the device name will depend on the setting of the UA-25EX's Sample rate select switch (p. 13).
- * If you're unable to select the UA-25EX as the audio input/output device in your software, it may be that a problem has occurred. Refer to **"Problems with settings"** (p. 49) in the Troubleshooting section.

Using the UA-25EX with iTunes

Some software, such as iTunes, will use the audio input/output device that you select in the "Sound" preference settings.

Here's how to specify the UA-25EX as the sound output device so that it can be used with iTunes.

- * In a later step, you'll use iTunes to play back sample data. Be sure to make the settings described below.
- * The content displayed may differ depending on your system.

1

In **System Preferences**, click **Sound**.

2

Click the **Output** tab.

In **"Choose a device for sound output,"** choose **UA-25EX 44.1kHz**.

- * The **"44.1kHz"** in the device name will depend on the setting of the UA-25EX's Sample rate select switch (p. 13).

3

When you've finished making the setting, close System Preferences.

MIDI input/output device settings

- 1 ▶ In the **Applications – Utilities** folder, double-click **Audio MIDI Setup** to start it up.
- 2 ▶ Click the **MIDI Devices** tab.
- 3 ▶ Verify that the **UA-25EX** is shown in the **Audio MIDI Setup** dialog box.
 - * If the UA-25EX is not shown, or if it is grayed-out, the UA-25EX has not been recognized correctly. Try clicking **Rescan MIDI**. You can also try disconnecting and reconnecting the UA-25EX's USB cable.
 - * If you've previously installed a different version of the driver, the former settings could still exist. If so, click the grayed-out UA-25EX to select it, and then click **Remove Device** to delete the settings.
- 4 ▶ Click **Add Device**.

The screen will indicate “**new external device.**”
- 5 ▶ Specify the **Device Name** for the **new external device**.
 1. Click the “**new external device**” that was added, and then click **Show Info**.
 2. In the **Device Name** field, type **UA-25EX**.
- 6 ▶ Using the mouse, drag the up/down arrows that indicate the input/output ports so that they are connected in the following combination.
 - The UA-25EX's ▲/▼ with the added UA-25EX's ▲/▼.
- 7 ▶ Check to make sure that MIDI transmission and reception takes place normally. Proceed as follows.
 1. Click **Test Setup**. The mouse cursor will change shape.
 - * If a sound module is connected to the UA-25EX, the following step will cause a fairly loud sound to be produced from the sound module; turn down the sound module's volume before you proceed.
 2. If a sound module is connected to the UA-25EX's MIDI OUT connector, click the corresponding external device. If the sound module produces sound, the settings are correct.
 3. Click **Test Setup** once again to end the test.
- 8 ▶ Close the **Audio MIDI Setup** dialog box. This completes the settings.

Caution when recording or playing back with your software

Check the following points before you use the UA-25EX to record or play back.

- Connect the UA-25EX to your Macintosh before you start up the software you're using.
- Do not disconnect the UA-25EX's USB cable from your Macintosh while your software is running. Close the software you're using before you disconnect the UA-25EX's USB cable from your Macintosh.
- The UA-25EX will not work with the Mac OS X Classic environment. Use the UA-25EX when the classic environment is not running.

This completes driver installation and settings.

Next, verify that you hear sound from the UA-25EX. → **“Verifying that you hear sound”** (p. 28)

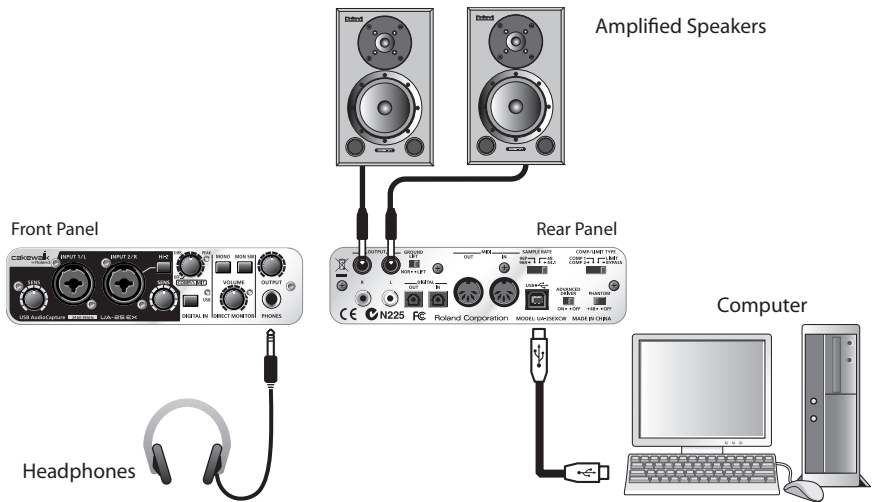
Verifying that you hear sound

Now let's play back some sample data to verify that the connections and settings are correct.

- * Before connecting the UA-25EX to other equipment, you must turn the UA-25EX's output volume and the volume controls of all devices to which the UA-25EX is connected to their minimum settings to avoid malfunctions or speaker damage.

Connecting your audio playback system

As shown in the illustration, connect your headphones or monitor speakers so that you can hear the sound played back from the computer.



Playing back the sample data

Here we will play back sample data using the standard functionality provided by your operating system. The sample data "TTears.mp3" is in the included CD-ROM.

- * Copyright law prohibits you from using the song data included with this product for any purpose other than personal enjoyment unless you have obtained permission from the copyright holder. You may not copy this data or use it in a derivative work without permission from the copyright holder.



1 Prepare the CD-ROM.

Insert the included UA-25EX Driver CD-ROM into the CD-ROM drive of your computer.

- 2 ▶ From the **Sample** folder of the CD-ROM, copy the file **TTears(.mp3)** to your desktop.
- 3 ▶ Set the UA-25EX's Sample rate select switch (p. 13) to the **44.1 kHz** position.
 - * After changing the sample rate, you must close all software that is using the UA-25EX, disconnect the UA-25EX's USB cable from your computer, and then reconnect it.
- 4 ▶ Play back the sample data "TTears"(mp3).
 Double-click the **TTears(.mp3)** file you copied to your desktop.
 If you're using Windows, Windows Media Player will start. If you're using Macintosh, iTunes will start. Click the play button, and the sample data will start playing.
 - * Depending on your system, other playback software may start up. If so, play the sample data as described in the documentation for the software you're using.
- 5 ▶ Adjust the volume.
 If you're using headphones, use the UA-25EX's output volume knob to adjust the volume.
 If you've connected your audio playback system to the OUTPUT jacks, use the controls of your audio playback system to adjust the volume.
 You should hear the sample data played from the headphones or speakers connected to the UA-25EX.
 - * If the Digital input switch is on (digital input mode), you won't be able to hear the sound being played by your computer. Turn the Digital input switch off.

Did you hear the sample data?

If you could hear the sample data, the UA-25EX is correctly connected to your computer and the driver has been installed correctly.

If you could not hear the sample data, refer to "**Troubleshooting**" (p. 46). If there's no sound, or if there's something wrong with the playback, information provided in that section will help you solve the problem.

All connections and driver settings for the UA-25EX are now complete.

Read the following sections as necessary.

- "**Basic connections**" (p. 31)
- "**Connecting a microphone or a guitar**" (p. 32)
- "**Connecting a microphone and applying the compressor**" (p. 34)
- "**Recording a digital signal into your computer**" (p. 36)
- "**Recording to an MD or other digital device**" (p. 37)

Basic Connections and Settings

This section explains the basic connections and data flow for the UA-25EX. Refer to the block diagram printed on the front cover of the manual as you read this section.

- * To prevent malfunction and/or damage to speakers or other devices, always turn down the volume, and turn off the power on all devices before making any connections.
- * When connection cables containing resistors are used, the volume level of equipment connected to the inputs (input jacks) may be low. If this happens, use connection cables that do not contain resistors.
- * Don't connect anything to input jacks you are not using.
- * Howling could be produced depending on the location of microphones relative to speakers. This can be remedied by:
 1. Changing the orientation of the microphone(s).
 2. Relocating microphone(s) at a greater distance from speakers.
 3. Lowering volume levels.

Note

When you connect the UA-25EX to your computer, sound will no longer be heard from your computer's speakers.

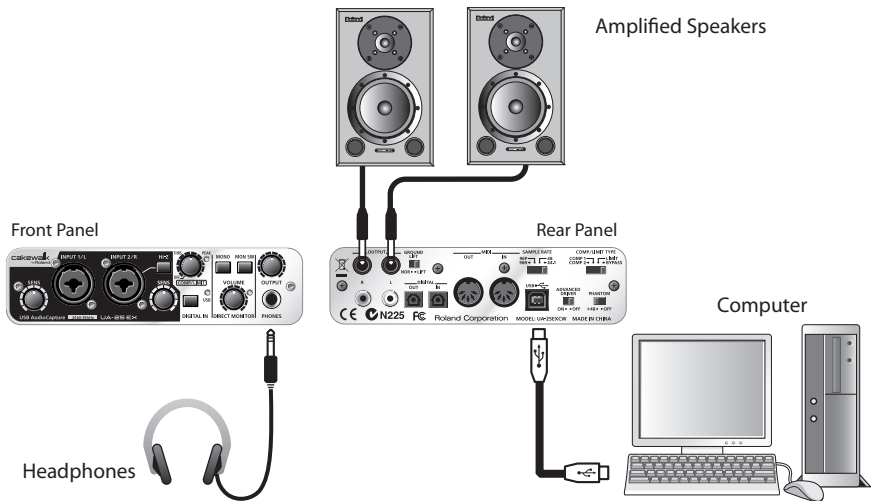
- Connect your headphones or audio playback system (external monitors) to the UA-25EX.
- If you want to listen to sound through your computer's speakers, disconnect the UA-25EX from your computer.

Basic connections

Use the USB cable to connect the UA-25EX to your computer.

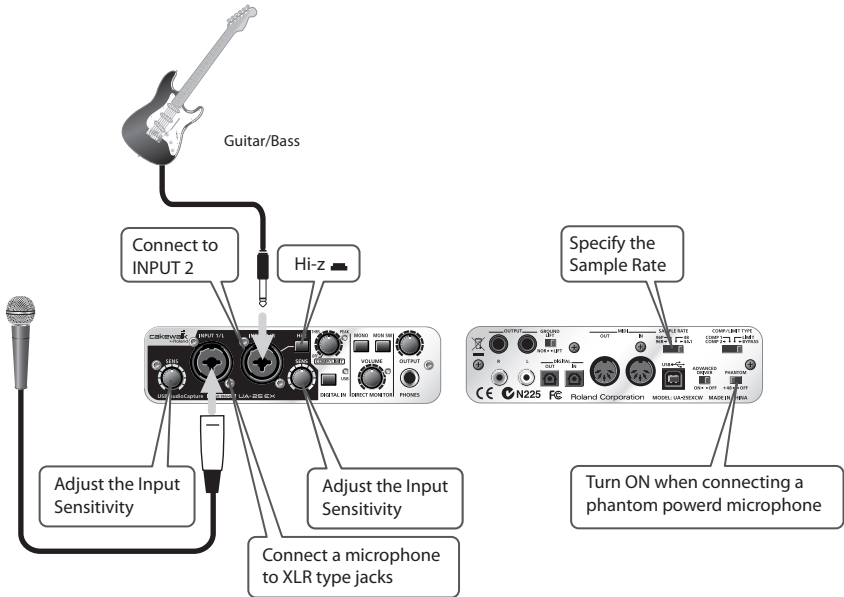
MIDI data and audio data are transferred in both directions via the USB cable.

By connecting headphones or monitor speakers as shown in the illustration, you can monitor the playback from your software or the sound from an instrument or audio device connected to the UA-25EX.



Connecting a microphone or a guitar

With the connections and settings described here, you can listen to audio data play back from your computer while you record just your vocal or guitar performance into your sequencer.



Connections

The sound of the microphone connected to INPUT 1 will be recorded in your computer on the left (L) channel. If you connect a source to INPUT 2, it will be recorded on the right (R) channel.

Connect your guitar/bass to INPUT 2.

Input impedance select switch

If you've connected a guitar/bass to INPUT 2: Select Hi-Z (| pressed inward).

If you've connected a microphone to INPUT 2: Select Lo-Z (| outward position).

Phantom power switch

If you're using a condenser microphone, turn the phantom power switch on.

* If a device that does not use phantom power is connected, you must turn off the phantom power switch. Failing to do so may cause malfunction.

Input sensitivity knob

Use the input sensitivity knob to adjust the input level. You can obtain the best recording quality by turning the input sensitivity knobs as high as possible without causing the peak indicators to light.

Sample rate select switch

Set this to the same sample rate as selected in your recording software.

If you change the UA-25EX's sample rate, you must disconnect the USB cable that connects the UA-25EX to your computer, and then reconnect the USB cable in order for the new setting to take effect.

STEREO/MONO select switch (Direct Monitor section)

This selects whether the input signal is to be monitored in stereo or in monaural.

Direct Monitor switch

You can turn this on to monitor the input signal.

Turn this off if you want to pass the signal "through" within your software.

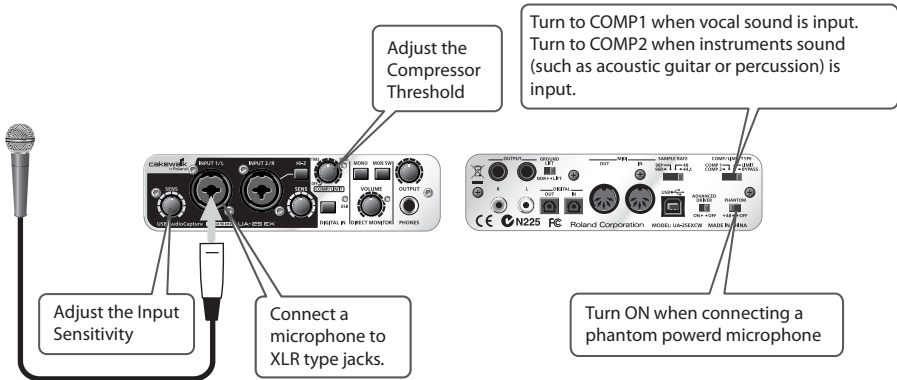
Direct Monitor volume knob

This adjusts the balance between the monitor volume knob and the volume of the audio being played back from your computer.

Using the direct monitor volume knob to adjust the volume will not affect the recording level.

Connecting a microphone and applying the compressor

You can obtain a fatter sound by applying a compressor to the input signal from the microphone.



Connections

The sound of the microphone connected to INPUT 1 will be recorded in your computer on the left (L) channel. If you connect a source to INPUT 2, it will be recorded on the right (R) channel.

Phantom power switch

If you're using a condenser microphone, turn the phantom power switch on.

- * If a device that does not use phantom power is connected, you must turn off the phantom power switch. Failing to do so may cause malfunction.

Input sensitivity knob

Use the input sensitivity knob to adjust the input level. You can obtain the best recording quality by turning the input sensitivity knobs as high as possible without causing the peak indicators to light.

Compressor/limiter threshold knob

Turning this knob toward the right will apply stronger compression. This will also increase the gain (makeup gain), so you should use the input sensitivity knob and threshold knob to adjust the input level so that the peak indicator does not light.

- * The compressor (and the limiter) does not support stereo signals. The compressor/limiter for INPUT 1 and INPUT 2 will each operate independently.
- * Turning this knob toward the right will strengthen the compressor effect, which may create the impression that the tone is being affected. If this occurs, turn the threshold knob back toward the left until the tonal change is not noticeable.

Sample rate select switch

Set this to the same sample rate as selected in your recording software.

If you change the UA-25EX's sample rate, you must disconnect the USB cable that connects the UA-25EX to your computer, and then reconnect the USB cable in order for the new setting to take effect.

STEREO/MONO select switch (Direct Monitor section)

This selects whether the input signal is to be monitored in stereo or in monaural (p. 12). If you've connected a microphone as shown in this example, choose the monaural (MONO) setting.

Direct Monitor switch

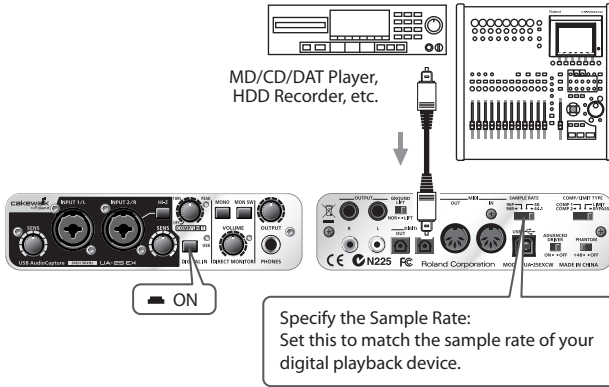
If this is on, the direct monitor indicator will be lit. Also you'll be able to monitor the sound with the compressor applied.

Direct Monitor volume knob

This adjusts the balance between the monitor volume and the volume of the audio being played back from your computer.

Using the direct monitor volume knob to adjust the volume will not affect the recording level.

Recording a digital signal into your computer



Connections

Connect your digital device to the digital input connector.

Sample rate select switch

Set this to match the sample rate of the software you're using to record your digital playback device.

If you change the UA-25EX's sample rate, you must disconnect the USB cable that connects the UA-25EX to your computer, and then reconnect the USB cable in order for the new setting to take effect.

* If you want to record at 96 kHz, you must set this switch to "96R" (record).

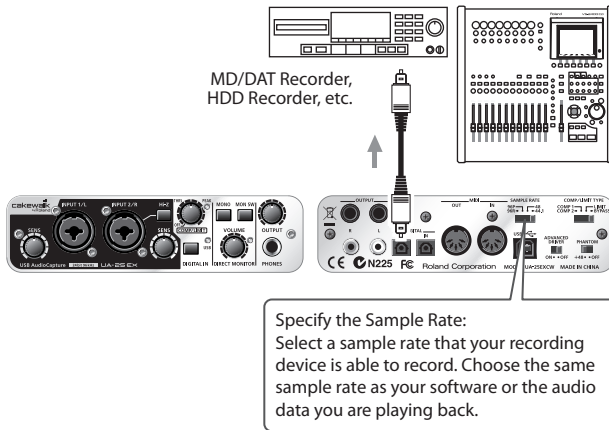
Digital input switch

Turn this on so that the UA-25EX will synchronize to the digital signal being input to the digital input connector.

Other notes

The direct monitor volume control will have no effect.

Recording to an MD or other digital device



Connections

Connect your digital device to the digital output connector.

Sample rate select switch

Set this to match the sample rate of your digital recording device and the sample rate of your software or the audio data you are playing back.

If you change the UA-25EX's sample rate, you must disconnect the USB cable that connects the UA-25EX to your computer, and then reconnect the USB cable in order for the new setting to take effect.

* If you recorded at 96 kHz, you must set this switch to "96P" (playback).

Other notes

The signals being input from the combo input jacks are not output directly from the digital output connector.

Appendices

Driver settings

The UA-25EX's dedicated driver allows you to view or change the settings.

- * You cannot change the settings of the standard driver provided by the operating system ("About standard driver mode" p. 45).

Viewing or changing the settings (Windows)

- 1 Use a USB cable to connect the UA-25EX to your computer.
- 2 Open the **Control Panel**, and double-click the **UA-25EX** icon.
 - * If you don't see the **UA-25EX** icon, switch to the Classic View.
- 3 The **UA-25EX Driver Settings** dialog box will appear.

Audio Buffer Size

Normally, you should leave the buffer size at the sixth mark from the left.

- * If you've changed the buffer size, you must restart the software that's using the UA-25EX. Alternatively, if you're using software that has an audio device test function, execute the software's test function.
- * Depending on the software you're using, its audio settings may also have a buffer size adjustment.

Use Smaller ASIO Buffer Size

By selecting this check box, you can decrease the buffer size when using ASIO compatible software. If you experience dropouts in the sound with this check box selected, clear the check box.

- * Clear this check box if you want to adjust the **Audio Buffer Size**.

Use ASIO Direct Monitor

Select this check box if you want to use ASIO Direct Monitor functionality with your ASIO compatible software.

Light Load

Normally, you should leave this check box cleared.

- * If you've made a change to the settings, you must disconnect the USB cable from the UA-25EX and then reconnect it in order for the new settings to take effect.

Show "README"

This displays the online manual for the driver.

Driver version

This displays the version of the currently installed driver.

Viewing or changing the settings (Macintosh)

- 1 ▶ Use a USB cable to connect the UA-25EX to your computer.
- 2 ▶ In **System Preferences**, click **UA-25EX**.
The Driver Settings screen will appear.

Audio Buffer Size

This adjusts the driver's audio input/output buffer size.

If you experience dropouts or noise when playing or recording even after you have adjusted the audio buffer size in your software, try increasing this buffer size setting.

- * Some software does not allow you to adjust the buffer size.

Recording Margin

If there are dropouts or noise in the recorded audio data even after you have adjusted the audio buffer size in your software and have also adjusted the **Audio Buffer Size**, try increasing this recording margin setting.

- * Some software does not allow you to adjust the buffer size.

Recording Timing

Adjust this setting if the timing of the recorded audio data is incorrectly aligned.

- * If audio software is running, these settings will not be applied immediately even if you click **[Apply]**. Close all audio software; the settings will be applied the next time you start up the software.

Driver signing option settings (Windows XP)

Driver installation may not be possible due to your settings for "Driver Signing Options." Refer to the following, and make the appropriate settings.

- 1 ▶ Open the **Control Panel**, click **Performance and Maintenance**, and then click the **System** icon.
* If you're using the Classic view, double-click **System**.
- 2 ▶ Click the **Hardware** tab, and then click **[Driver Signing]**.
The **Driver Signing Options** dialog box will appear.
- 3 ▶ In the **Driver Signing Options** dialog box, choose Warn or Ignore, and click [OK].
- 4 ▶ Click **[OK]** to close the **System Properties** dialog box.
- 5 ▶ Install the driver as described in the procedure for **Installing the driver** (p. 20).
* Once you've finished installing the driver, change the driver signing options back to their original settings.

Reinstalling the driver

If a problem occurred while installing the driver, use the following procedure to reinstall it.

- 1 ▶ Uninstall the UA-25EX driver as described in **Removing the driver** (p. 40).
- 2 ▶ Install the driver once again as described in **Driver Installation and Settings** (p. 15).

Removing the driver

Your computer may fail to correctly recognize the UA-25EX if the driver could not be installed according to the specified procedure. If so, you'll need to delete the driver that was detected by mistake. Use the following procedure to remove the driver, and then install the driver once again according to the procedure given in **Driver Installation and Settings** (p. 15).

Windows users

* The displayed content may differ depending on your system.

- 1 ▶ Start up Windows with the UA-25EX disconnected.
Make sure that all USB cables other than those for a USB keyboard and USB mouse (if used) are disconnected.
Log on using a user name whose account type is computer administrator (such as Administrator).
- 2 ▶ Insert the included UA-25EX Driver CD-ROM into your computer's CD-ROM drive.
- 3 ▶ On the CD-ROM, navigate to the following folder and double-click **Uninstal.exe**.
Windows Vista: **Driver\Vista\Uninstal.exe**
Windows XP: **Driver\XP\Uninstal.exe**
- 4 ▶ If you're using Windows Vista, a user account control warning will appear; click **[Continue]**.
- 5 ▶ The screen will indicate "**The installed UA-25EX Driver will be uninstalled.**" Click **[OK]**.
If any other message appears, proceed as directed by the message.
- 6 ▶ The screen will indicate "**Uninstallation was completed.**" Click **[OK]** to restart Windows.

Macintosh users

* The displayed content may differ depending on your system.

- 1 Start up your Macintosh with all USB cables disconnected. Make sure that all USB cables other than those for a USB keyboard and USB mouse are disconnected.
 - 2 Insert the included UA-25EX Driver CD-ROM into the CD-ROM drive of your Macintosh.
 - 3 Navigate to the CD-ROM's **Driver** folder, and double-click **UA25EX_Uninstaller**.
 - 4 The screen will indicate "**This uninstalls UA-25EX driver from this Macintosh**". Click **[Uninstall]**. If any other message appears, proceed as directed by the message.
 - 5 The screen will indicate "**Are you sure to uninstall the driver?**" Click **[OK]**.
 - 6 An **Authenticate** dialog box or the dialog that indicates "**Installer requires that you type your password**" will appear. Enter the password and click **[OK]**.
 - 7 The screen will indicate "**Uninstallation is completed.**" Click **[Restart]** to restart your Macintosh.
- * It may take some time for the Macintosh to restart.

Power management settings

If you experience problems such as interrupted notes or dropouts in the sound, you may be able to solve the problem by changing your computer's power management settings.

Windows Vista users

- 1 ▶ Open the **Control Panel**, click **System and Maintenance**, and then click **Power Options**.
 - * If you're using the Classic view, double-click the **Power Options** icon.
- 2 ▶ In **Select a power plan**, choose **High performance**.
- 3 ▶ In the **High performance** area, click **Change plan settings**.
- 4 ▶ Click **Change advanced power settings**.
- 5 ▶ In **Power Options Advanced Settings**, click the "+" symbol for **Hard Disk**, and click the "+" symbol for **Turn off hard disk after** to open it.
- 6 ▶ Click **Setting (Minutes)**, and click the down arrow to change the setting to **Never**.
- 7 ▶ Click **[OK]** to close the **Power Options** window.
- 8 ▶ Close the **Edit Plan Settings** screen.

Windows XP users

- 1 ▶ Open the **Control Panel**, click **Performance and Maintenance**, and click **Power Options**.
 - * If you're using the Classic view, double-click the **Power Options** icon.
- 2 ▶ Click the **Power Schemes** tab, and in the **Power Schemes** field, select **Always On**.
- 3 ▶ Click **[OK]** to close **Power Options Properties**.

Macintosh users

- 1 ▶ In **System Preferences**, click **Energy Saver**.
- 2 ▶ Click **Options**.
- 3 ▶ In the **Processor Performance** field, choose **Highest**.
 - * On some Macintosh it may not be possible to set the "**Processor Performance**."

System “Performance” settings (Windows)

You may be able to solve the problem by changing the “Performance” setting of the system as described below.

Windows Vista users

- 1** ▶ Open the **Control Panel**, click **System and Maintenance**, and click **System**.
 - * If you’re using the Classic view, double-click the **System** icon.
- 2** ▶ In the list of **tasks** shown at the left, click **Advanced System Settings**.
- 3** ▶ A User Account Control dialog box will appear; click **[Continue]**.
 - * If you’re asked to enter an administrator password, log on to Windows as a user whose account type is administrator, and make the setting again.
- 4** ▶ Click **Performance [Settings]**, and click the **Advanced** tab.
- 5** ▶ Choose **Background services** and click **[OK]**.
- 6** ▶ Click **[OK]** to close **System Properties**.

Windows XP users

- 1** ▶ Open the **Control Panel**, click **Performance and Maintenance**, and double-click **System**.
 - * If you’re using the Classic view, double-click the **System** icon.
- 2** ▶ Click the **Advanced** tab, and click **Performance [Settings]**.
- 3** ▶ Click the **Advanced** tab.
- 4** ▶ Choose **Background services**, and click **[OK]**.
- 5** ▶ Click **[OK]** to close **System Properties**.

System volume settings

Windows Vista users

- 1 ▶ Open the **Control Panel**, and click **Hardware and Sound**.
 - * If you're using the Classic View, click **Control Panel Home** to exit the Classic View.
- 2 ▶ In **Sound**, click **Adjust system volume**.
- 3 ▶ The **Volume Mixer** will appear. From the **Device** menu, select the UA-25EX's **OUT** and adjust the volume.
- 4 ▶ Adjust the Device or Application volume.
 - * If the Mute button is on, click the mute button once again to turn it off.
 - * You can also access the **volume mixer** by right-clicking the **speaker** icon located in the bottom right corner of your screen, and choosing **Open Volume Mixer**.

Windows XP users

- 1 ▶ Open the **Control Panel**, and double-click **Sounds and Audio Devices**.
 - * If you don't see the Sounds and Audio Devices icon, click **Sounds, Speech, and Audio Devices**, and then click **Sounds and Audio Devices**.
- 2 ▶ Click the **Audio** tab.
- 3 ▶ In the Sound playback area, make sure that **OUT (UA-25EX)** is selected as the Default device, and click [**Volume**].
- 4 ▶ The **Volume Control** will appear; adjust the **Wave** volume.
 - * If the Mute setting is checked, clear the check mark.

Macintosh users

- 1 ▶ In **System Preferences**, click **Sound**.
- 2 ▶ Click the **Output** tab.
- 3 ▶ In the **Choose a device for sound output field**, make sure that the UA-25EX is selected, and use the Output volume slider to adjust the volume.
 - * If Mute is checked, clear the check mark.

About standard driver mode

Use this mode if you want to use the standard driver provided by your operating system.

- * The UA-25EX will operate at 44.1 kHz/16-bit, regardless of the setting of the sample rate select switch (p. 13).
- * This mode does not support ASIO drivers.
- * The MIDI IN/OUT connectors cannot be used in this mode.

Installing the standard driver

- 1 Start up your computer with the UA-25EX disconnected.
Disconnect all USB cables other than those for a USB keyboard and USB mouse (if used).
- 2 Close any software that is running.
- 3 Set the UA-25EX's Advanced driver switch to **OFF**.
- 4 Connect the UA-25EX to your computer.
The driver will be installed automatically.

Input/output device settings

In order to use the UA-25EX with your software, you'll need to choose the UA-25EX as the audio input/output device.

For details on how to make this setting, refer to the documentation of your software.

Windows Vista users

Audio output device	Speakers (UA-25EX)
Audio input device	Line (UA-25EX)

- * For details on settings for using the UA-25EX with Windows Media Player, refer to **Input/output device settings** (p. 18), and make the audio input/output settings as directed.

Windows XP users

Audio output device	UA-25EX
Audio input device	UA-25EX

- * For details on settings for using the UA-25EX with Windows Media Player, refer to **Input/output device settings** (p. 22), and make the audio input/output settings as directed.

Macintosh (Mac OS X) users

Audio output device	UA-25EX
Audio input device	UA-25EX

- * For details on audio input/output settings for Mac OS X, refer to **Audio input/output device settings** (p. 25).

Troubleshooting

If you experience problems, read this chapter first. It contains information that will help you solve the problem.

* For help with Windows or Macintosh operation, refer to the documentation for your computer or operating system.

Problems when installing the driver

Can't start up the installer

Is the CD-ROM inserted correctly in your CD-ROM drive?

Make sure that the CD-ROM is correctly inserted in the CD-ROM drive.

Could the CD-ROM itself or the lens of your CD-ROM drive be dirty?

The installer may not operate correctly if the CD-ROM or the lens of your CD-ROM drive is dirty. Use a commercially available CD cleaner or lens cleaner to clean the disc or lens.

Are you attempting to install from a networked CD-ROM drive?

The driver cannot be installed from a CD-ROM drive on the network.

A warning or error appears during the installation (Windows)

Could you have connected the UA-25EX to your computer before installing the driver?

If you connect the UA-25EX to your computer before installing the driver, an error message may appear when you begin the installation.

Uninstall the UA-25EX driver as described in **"Removing the driver"** (p. 40), and then install the UA-25EX driver once again as described in **"Driver Installation and Settings"** (p. 15).

Are there any devices labeled "Other," "Unknown," or "?/!/X" in the Device Manager? (Windows)

If driver installation was not completed successfully, the partially installed driver may remain in an incomplete state.

Uninstall the UA-25EX driver as described in **"Removing the driver"** (p. 40), and then install the UA-25EX once again as described in **"Driver Installation and Settings"** (p. 15).

Can't install the driver according to the procedure

Did you log on to Windows with the appropriate user privileges?

You must log onto Windows using one of the following user names.

- A user name belonging to the Administrators group, such as Administrator
- A user name whose account type is Computer Administrator
- * For details, ask the system administrator for your computer.

In some cases, you may be unable to install the driver because of the "Driver signing option" settings.

Refer to "Driver signing option settings (Windows XP)" (p. 39) and make the appropriate settings.

Could other software be running, perhaps in the background (such as anti-virus software)?

The installation may not occur correctly if other software is running. Be sure to close all other software before you perform the installation.

Installation is not successfully completed when you connect the UA-25EX

Could the UA-25EX's Advanced driver switch be OFF?

Turn the UA-25EX's Advanced driver switch ON, and install the driver once again.

After you connect the UA-25EX, it may take several tens of seconds or several minutes before it is recognized by your computer.

This is not a malfunction.

Please wait until the Found New Hardware Wizard appears.

Is the UA-25EX connected?

Make sure that the UA-25EX is correctly connected to your computer.

Could your computer be operating on its battery?

Operation may be unstable if your computer is operating on battery power.

Please use your computer with its power supply connected.

Could you be using a bus-powered USB hub (a hub that does not require a power supply)?

The UA-25EX cannot be used with a bus-powered USB hub (a hub that does not need a separate power supply). Use it with a self-powered USB hub (a hub that has an internal power supply or AC adaptor).

Could a USB device other than a mouse or keyboard be connected?

Disconnect all USB devices (other than a mouse and keyboard, if used) from your computer before performing the installation.

Check the power management settings of your computer.

Your computer's power management settings may be limiting the power that is supplied to USB.

Take a look at your computer's power management settings.

→ "Power management settings" (p. 42)

Does your computer meet the requirements of the USB specification?

Operation may be unstable if your computer does not meet the electrical requirements of the USB specification.

In this case, you may be able to solve the problem by connecting a self-powered USB hub (a USB hub that has an internal power supply or an AC adaptor).

“Found New Hardware Wizard” appears even though you’ve installed the driver (Windows XP)

Could you have connected the UA-25EX to a different USB connector than the one you used when installing the driver?

If your computer or USB hub has two or more USB connectors, connecting the UA-25EX to a different USB connector may cause your computer to ask for the driver file even though the driver has already been installed.

This behavior does not indicate a malfunction.

Install the driver as described in **step 8 of “Installing the driver”** (p. 21).

A number such as “2-” appears at the beginning of the device name (Windows Vista)

Could you have connected the UA-25EX to a different USB port?

If you connect the UA-25EX to a different USB port, some operating systems may automatically add a number to the beginning of the device name, but this should not be a problem when using the UA25EX. If you want to return to the device name that does not have this number, you can either connect the UA-25EX to the same USB port as when you installed it, or install the driver once again.

→ **“Reinstalling the driver”** (p. 40)

Problems with settings

Can't select/use the UA-25EX within software or in system settings

Could the UA-25EX be in use by other software?

Close all software that's currently running, disconnect the UA-25EX's USB cable, and then reconnect it.

If this does not solve the problem, reinstall the driver.

→ **"Reinstalling the driver"** (p. 40)

Is the driver installed correctly?

Driver installation may have failed. Please reinstall the driver.

→ **"Reinstalling the driver"** (p. 40)

Is the UA-25EX device name shown?

If the device name is not displayed, it may be that the driver installation failed. Please reinstall the driver.

→ **"Reinstalling the driver"** (p. 40)

Could the computer to which the UA-25EX is connected have entered standby (suspend) mode, hibernate mode, or sleep mode?

Close all software that uses the UA-25EX, disconnect the UA-25EX's USB cable, and then reconnect it.

If this does not solve the problem, restart your computer.

Could you have disconnected and reconnected the USB cable while using the UA-25EX?

Close all software that uses the UA-25EX, disconnect the UA-25EX's USB cable, and then reconnect it.

If this does not solve the problem, restart your computer.

Could the UA-25EX have been connected when the computer started up?

On some computers, the UA-25EX may be unusable if it is already connected when the computer starts up.

Start up your computer, and then connect the UA-25EX.

Are you using the Media Player included with Windows Vista?

On Windows Vista, the UA-25EX's MIDI device cannot be selected by Media Player.

Can't use or select the UA-25EX from your ASIO compatible software

Could the UA-25EX's Advanced driver switch be turned OFF?

If you're using ASIO compatible software, turn the Advanced driver switch ON.

Problems with playback or recording

No sound from your computer's speakers

If you connect the UA-25EX to your computer, sound will not be heard from your computer's speakers.

This is not a malfunction.

Connect your headphones or audio playback system (external monitors) to the UA-25EX.

Sound played by your computer is inaudible or too soft

Can you hear sound by connecting headphones?

If you can hear sound through headphones connected to the UA-25EX's headphone jack, check that you have correctly connected your audio playback system (external monitors), and adjust the volume of your equipment.

If the sound in your headphones is inaudible or too soft, check the other troubleshooting items.

Are the volume settings of the UA-25EX itself set appropriately?

Use the UA-25EX's front panel output volume and direct monitor volume knob to adjust the volume.

Could the UA-25EX's digital input switch be turned on (digital input mode)?

If the UA-25EX is set to digital input mode (p. 11), the audio signal being received at the digital input jack will be output.

The audio signal from your computer will not be output.

Could the sample rate select switch be set to "96R"?

If you want to play back at 96 kHz, set the sample rate select switch to "96P."

Could the Windows or Macintosh system volume be turned down?

→ "System volume settings" (p. 44)

Insufficient volume from your guitar

Are you using the correct connector?

Connect your guitar to the INPUT 2 combo input jack.

Is the input impedance select switch set correctly?

Set the input impedance select switch to the Hi-Z position.

Also check the contents of "Insufficient volume from a device connected to the combo input jack."

→ "Insufficient volume from a device connected to the combo input jack" (p. 51)

Insufficient volume from your microphone

Are you using the correct connector?

Connect your microphone to the XLR type connector of the combo input jack.

Also check the contents of “Insufficient volume from a device connected to the combo input jack.”

→ “Insufficient volume from a device connected to the combo input jack” (p. 51)

Insufficient volume from a device connected to the combo input jack

Is the direct monitor volume knob raised appropriately?

Turn the direct monitor volume knob toward the right to adjust the volume.

Is the input level appropriate?

Try turning the UA-25EX's input sensitivity knob toward the right to increase the input level.

Could you be using a cable that contains a resistor?

Make connections using a cable that does not contain an internal resistor (such as one from the Roland PCS series).

Distorted sound from a device connected to the combo input jack

Is the peak indicator lit?

Try turning the UA-25EX's input sensitivity knob toward the left to decrease the input level.

Playback contains clicks, dropouts, or other problems

Try adjusting the audio buffer size of your software

If your software allows you to adjust the audio buffer size, try changing the setting. Normally, clicks and pops can be eliminated by increasing the buffer size.

Try adjusting the audio buffer size of the driver

If your software does not allow you to adjust the buffer size, or if adjusting the buffer size in your software does not solve the problem, you may be able to solve the problem by changing the driver's audio input/output buffer size.

Try adjusting the buffer size as described in “Driver settings” (p. 38).

Check the power management settings

You may be able to eliminate clicks and pops by changing your system's power management settings.

→ “Power management settings” (p. 42)

Try updating the driver of your display adaptor (Windows)

You may be able to eliminate clicks and pops by updating the driver for the display adaptor installed in your computer.

Have you set the system's "Performance" setting? (Windows)

You may be able to solve the problem by changing the "Performance" setting of the system.

→ **"System "Performance" settings (Windows)"** (p. 43)

Do the sample rate settings match?

The sample rate setting of your software must match the sample rate setting of the UA-25EX itself.

* After changing the sample rate setting of the UA-25EX itself, you must close all software that uses the UA-25EX, disconnect the UA-25EX's USB cable from your computer, and then reconnect it.

Could other software programs be running?

Close software that you're not using.

If the window of a Windows program has been closed but it is still shown in the taskbar, that program is still running. Close all unneeded software that's shown in the taskbar.

Check the driver setting "Light Load" (Windows)

You may be able to solve the problem by selecting the "Light Load" check box in the driver settings dialog box.

→ **"Driver settings"** (p. 38)

Have you tried Windows Update or Microsoft Update? (Windows)

Try using Windows Update or Microsoft Update (provided by the Microsoft Corporation) to update your system to the latest version.

Try disabling the LAN

In your computer's Device Manager, try disabling LAN (wired/wireless).

If this eliminates the clicks and pops, it may be that updating your LAN driver or BIOS may solve the problem. Check whether updated software is available.

Could you have connected the UA-25EX to a USB hub?

Try connecting the UA-25EX directly to a USB connector on your computer.

Are you using the included USB cable?

You must use the included USB cable when using the UA-25EX. Some commercially available USB cables do not meet the requirements of the USB standard, and this may prevent the UA-25EX from operating correctly.

Could you have updated the Mac OS X software while UA-25EX was connected?

It has been found that clicks or pops can occur if you performed a Mac OS X software update while the UA-25EX was connected. If so, install the driver once again.

Noise or distortion occurs elsewhere than in the playback from your computer

Is a guitar connected?

If the noise decreases when you lower your guitar's volume, it may be that your guitar's pickups are being affected by noise from your computer or display. Move the guitar as far away from your computer as possible.

Could an unused microphone or guitar have been left connected?

If an unused microphone or guitar is connected to the UA-25EX, disconnect the microphone or guitar and turn the input sensitivity knob all the way to the left to lower the input level.

Check the setting of the ground lift switch.

See whether moving the UA-25EX's ground lift switch to LIFT will eliminate the noise. If you've used USB to connect a MIDI sound module to the same computer as the UA-25EX, and have connected the MIDI sound module's output to the UA-25EX's combo input jacks, noise from the computer may be heard from the UA-25EX.

If the noise is not eliminated by setting the ground lift switch to LIFT, try connecting your MIDI sound module and the UA-25EX to your computer via a self-powered USB hub (a USB hub that contains an internal power supply or uses an AC adaptor), or connect your MIDI sound module via a serial connection or via a MIDI interface.

Have you connected the ground terminal?

You may be able to solve the problem by grounding a metal component of your computer or the ground pin of your computer's AC adaptor. Also check whether there might be a device nearby that is emitting a strong electromagnetic field, such as a television or microwave oven.

Recorded sound is too loud or too soft**Is the input level appropriate?**

Use the UA-25EX's input sensitivity knob to adjust the input level. If your software is able to adjust the input level, check its input level setting.

Can't play or record**Was the driver installed correctly?**

Driver installation may have failed. Reinstall the driver.

→ **"Reinstalling the driver"** (p. 40)

Could the UA-25EX's sample rate be set to 96 kHz?

If you're using the UA-25EX at 96 kHz, you can't play and record simultaneously.

To perform playback, set the sample rate select switch to 96P.

To record, set the sample rate select switch to 96R.

Do the sample rate settings match?

The sample rate setting of your software must match the sample rate setting of the UA-25EX itself.

* After changing the sample rate setting of the UA-25EX itself, you must close all software that uses the UA-25EX, disconnect the UA-25EX's USB cable from your computer, and then reconnect it.

Did you make input/output device settings for your software?

Refer to the owner's manual of your software and to the following pages, and select the UA-25EX as the input/output device.

- Windows Vista: → **"Input/output device settings"** (p. 18)
- Windows XP: → **"Input/output device settings"** (p. 22)
- Mac OSX: → **"Audio input/output device settings"** (p. 25),
"MIDI input/output device settings" (p. 26)

Could the UA-25EX be in use by other software?

Close all software that's currently running, disconnect the UA-25EX's USB cable, and then reconnect it. If this does not solve the problem, reinstall the driver.

→ "Reinstalling the driver" (p. 40)

Could the computer to which the UA-25EX is connected have entered standby (suspend) mode, hibernate mode, or sleep mode?

Close all software that uses the UA-25EX, disconnect the UA-25EX's USB cable, and then reconnect it. If this does not solve the problem, restart your computer.

Could you have disconnected and reconnected the USB cable while using the UA-25EX?

Close all software that uses the UA-25EX, disconnect the UA-25EX's USB cable, and then reconnect it. If this does not solve the problem, restart your computer.

Could the UA-25EX have been connected when the computer started up?

On some computers, the UA-25EX may be unusable if it is already connected when the computer starts up.

Start up your computer, and then connect the UA-25EX.

Can't play or record 24-bit audio data

Does your software support 24-bit audio data?

Check whether the software you're using supports playback and recording of 24-bit audio data.

Is your software set correctly?

Make sure that your software is set to play and record 24-bit audio data.

Can't record via a digital connection / Something is wrong with the recorded sound

Is the digital input switch turned "on"?

If you want to digitally capture audio data from a CD or MD into your computer, turn on the digital input switch to select digital input mode (p. 11).

Could the digital audio data contain SCMS flags?

The UA-25EX complies with SCMS; if data containing SCMS flags (such as audio digitally copied from a commercial music CD) is input via the digital input connector, the UA-25EX will not allow this data to be recorded to your computer.

The sound will be output from the master output jacks and the headphone jack.

Does the UA-25EX's sample rate setting match the sample rate setting of the digital device from which you're trying to record?

Set the UA-25EX to the same sample rate as the device from which you're recording. If you switch the UA-25EX's sample rate, you must disconnect the UA-25EX's USB cable from the computer, and then reconnect it in order to make the new setting take effect.

Can't record or play MIDI

Is the Advance driver switch turned ON?

MIDI recording and playback is not possible if the Advance driver switch is OFF.

Specifications

UA-25EX: USB Audio Interface

Number of Audio Record/ Playback Channels	Record: 1 pair of stereo Playback: 1 pair of stereo DIGITAL IN SWITCH = OFF: Full duplex (except for 96 kHz setting) DIGITAL IN SWITCH = ON: Recording only
Signal Processing	PC interface: 24 bits (Advanced driver switch=ON) 16 bits (Advanced driver switch=OFF) AD/DA Conversion: 24 bits (linear)
Sampling Frequency	Digital output: 44.1/48/96 kHz Digital input: 44.1/48/96 kHz AD/DA Conversion: 44.1/48/96 kHz * Advanced driver switch=OFF: 44.1 kHz only
Frequency Response	96.0 kHz: 20 Hz to 40 kHz (+0 dB/-2 dB) 48.0 kHz: 20 Hz to 22 kHz (+0 dB/-1 dB) 44.1 kHz: 20 Hz to 20 kHz (+0 dB/-1 dB)
Nominal Input Level	Input Jack L, R (XLR type): -60 to -20 dBu Input Jack L, R (1/4 inch TRS phone type): -36 to +4 dBu * Maximum input level: Nominal Input Level + 12 dB
Nominal Output Level	Output Jack L, R (1/4 inch TRS phone type): +4 dBu (balanced) Output Jack L, R (RCA phono type): -2 dBu * Maximum output level: Nominal Output Level + 12 dB
Residual Noise Level	Output Jack: -96 dBu (S/N ratio: 105 dB typ.) * Input terminated with 1 k ohms, OUTPUT VOLUME: max., INPUT MONITOR: min., IHF-A, typ.
Microphone Pre-Amp	Phantom power 48 V / 8 mA max. Analog Limiter or compressor
Interface	USB Digital input/output (Optical type) Conforms to IEC60958 consumer format. MIDI input/output

Connectors	<p><Front Panel></p> <p>Input Jack L, R XLR type (balanced, phantom power +48 V) 1/4 inch TRS phone type (balanced)</p> <p>* Input Jack R: high impedance is supported.</p> <p>Headphones Jack Stereo 1/4 inch phone type</p> <p><Rear Panel></p> <p>Digital Input Connector (Optical type) Digital Output Connector (Optical type) Output Jack L, R 1/4 inch TRS phone type (balanced) RCA phono type MIDI Connectors (IN, OUT) USB Connector (B type)</p>
Power Supply	USB Bus Power
Current Draw	480 mA
Dimensions	164 (W) x 133 (D) x 46 (H) mm 6-1/2 (W) x 5-1/4 (D) x 1-13/16 (H) inches
Weight	565 g 1 lb. 4 oz.
Accessories	Owner's Manual, USB cable, UA-25EX Driver CD-ROM, Cakewalk Production Plus Pack CD-ROM, License agreement

Index

- A**
 - Advanced driver switch 14
 - ASIO 38
- B**
 - Balance 10
 - Bass guitar 32
 - BYPASS 14
- C**
 - Cakewalk Production Plus Pack 8
 - Combo input jacks 10
 - Compressor 11
 - Compressor/Limiter type switch 14
 - Condenser microphone 10, 32, 34
- D**
 - Digital input 11, 13
 - Digital input mode 11
 - Digital output connector 13
 - Direct monitor 33, 35
 - Direct monitor indicator 12
 - Direct monitor switch 12
 - Direct monitor volume 12
 - Driver 15
 - Driver Signing Options Settings 39
- G**
 - Ground lift switch 13
 - Guitar 32
- H**
 - Headphone jack 12
 - High impedance 10
 - Hi-Z 10
- I**
 - Impedance 10
 - Input
 - Analog audio 10
 - Combo input jack 10
 - Digital audio 11, 13, 36
 - Impedance 10, 32
 - Level 10
 - Sensitivity 10
 - Installing the driver
 - Macintosh 24
 - Windows Vista 16
 - Windows XP 20
 - iTunes 25
- L**
 - LIFT 13
 - Limiter 11
 - Limiter type switch 14
 - LoopBack mode 11
 - Low impedance 10
 - Lo-Z 10
- M**
 - Macintosh 24
 - Master output jack 13
 - Microphone 32, 34
 - MIDI connector 13
- N**
 - NOR 13
 - NORMAL 13
- O**
 - Output
 - Digital audio 13, 37
 - Headphone 12
 - Master 13
 - Volume 12
- P**
 - Peak indicator 11
 - Phantom power 10
 - Phantom power switch 14
 - Phone type jack 10
 - Preamp 10
- R**
 - RCA phono jack 13
- S**
 - Sample rate 33, 35
 - Sample rate select switch 13
 - SLEEVE 13
 - Standard driver mode 45
 - STEREO/MONO select switch 12

T

Threshold knob 11
TRS jack 13
TRS type 10

U

Unbalance 10
Uninstall the driver
 Macintosh 41
 Windows 40
USB cable 9
USB connector 14
USB indicator 12

V

Vocal 32

W

Windows Media Player
 Windows Vista 18
 Windows XP 22
Windows Vista 16
Windows XP 20

X

XLR type 10

MEMO

MEMO

MEMO

For EU Countries



- UK** This symbol indicates that in EU countries, this product must be collected separately from household waste, as defined in each region. Products bearing this symbol must not be discarded together with household waste.
- DE** Dieses Symbol bedeutet, dass dieses Produkt in EU-Ländern getrennt vom Hausmüll gesammelt werden muss gemäß den regionalen Bestimmungen. Mit diesem Symbol gekennzeichnete Produkte dürfen nicht zusammen mit den Hausmüll entsorgt werden.
- FR** Ce symbole indique que dans les pays de l'Union européenne, ce produit doit être collecté séparément des ordures ménagères selon les directives en vigueur dans chacun de ces pays. Les produits portant ce symbole ne doivent pas être mis au rebut avec les ordures ménagères.
- IT** Questo simbolo indica che nei paesi della Comunità europea questo prodotto deve essere smaltito separatamente dai normali rifiuti domestici, secondo la legislazione in vigore in ciascun paese. I prodotti che riportano questo simbolo non devono essere smaltiti insieme ai rifiuti domestici. Ai sensi dell'art. 13 del D.Lgs. 25 luglio 2005 n. 151.
- ES** Este símbolo indica que en los países de la Unión Europea este producto debe recogerse aparte de los residuos domésticos, tal como está regulado en cada zona. Los productos con este símbolo no se deben depositar con los residuos domésticos.
- PT** Este símbolo indica que nos países da UE, a recolha deste produto deverá ser feita separadamente do lixo doméstico, de acordo com os regulamentos de cada região. Os produtos que apresentem este símbolo não deverão ser eliminados juntamente com o lixo doméstico.
- NL** Dit symbool geeft aan dat in landen van de EU dit product gescheiden van huishoudelijk afval moet worden aangeboden, zoals bepaald per gemeente of regio. Producten die van dit symbool zijn voorzien, mogen niet samen met huishoudelijk afval worden verwijderd.
- DK** Dette symbol angiver, at i EU-lande skal dette produkt opsamlles adskilt fra husholdningsaffald, som defineret i hver enkelt region. Produkter med dette symbol må ikke smides ud sammen med husholdningsaffald.
- NO** Dette symbolet indikerer at produktet må behandles som spesialavfall i EU-land, litt til retningslinjer for den enkelte regionen, og ikke kastes sammen med vanlig husholdningsavfall. Produkter som er merket med dette symbolet, må ikke kastes sammen med vanlig husholdningsavfall.

- SE** Symbolen anger att i EU-länder måste den här produkten kasseras separat från hushållsavfall, i enlighet med varje regions bestämmelser. Produkter med den här symbolen får inte kasseras tillsammans med hushållsavfall.
- FI** Tämä merkintä ilmaisee, että tuote on EU-maissa kerättävä erillään kotitalousjättestä kunkin alueen voimassa olevien määräysten mukaisesti. Tällä merkinnällä varustettuja tuotteita ei saa hävittää kotitalousjätteen mukana.
- HU** Ez a szimbólum azt jelenti, hogy az Európai Unióban ezt a terméket a háztartási hulladéktól elkülönítve, az adott régióban érvényes szabályozás szerint kell gyűjteni. Az ezzel a szimbólummal ellátott termékeket nem szabad a háztartási hulladékek közé dobni.
- PL** Symbol oznacza, że zgodnie z regulacjami w odpowiednim regionie, w krajach UE produktu nie należy wyrzucać z odpadami domowymi. Produktów opatrzonych tym symbolem nie można utylizować razem z odpadami domowymi.
- CZ** Tento symbol udává, že v zemích EU musí být tento výrobek sbírán odděleně od domácího odpadu, jak je určeno pro každý region. Výrobky nesoucí tento symbol se nesmí vyhadzovat spolu s domácím odpadem.
- SK** Tento symbol vyjadruje, že v krajinách EÚ sa musí zber tohto produktu vykonávať oddelene od domového odpadu, podľa nariadení platných v konkrétnej krajine. Produkty s týmto symbolom sa nesmú vyhadzovať spolu s domovým odpadom.
- EE** See sümbol näitab, et EL-i maades tuleb see toode olemprügist eraldi koguda, nii nagu on igas piirkonnas määratletud. Selle sümboliga märgitud tooteid ei tohi ära visata koos olmeprügiga.
- LT** Šis simbolis rodo, kad ES šalyse šis produktas turi būti surenkamas atskirai nuo buitinių atliekų, kaip nustatyta kiekviename regione. Šiuo simboliu paženkliniti produktai neturi būti išmetami kartu su buitineis atliekomis.
- LV** Šis simbols norāda, ka ES valstīs šo produktu jāievāc atsevišķi no mājsaimniecības atkritumiem, kā noteikts katrā reģionā. Produktus ar šo simbolu nedrīkst izmest kopā ar mājsaimniecības atkritumiem.
- SI** Ta simbol označuje, da je treba proizvod v državah EU zbirati ločeno od gospodinskih odpadkov, tako kot je določeno v vsaki regiji. Proizvoda s tem znakom ni dovoljeno odlagati skupaj z gospodinskimi odpadki.
- GR** Το σύμβολο αυτό υποδηλώνει ότι στις χώρες της Ε.Ε. το συγκεκριμένο προϊόν πρέπει να συλλέγεται χωριστά από τα υπόλοιπα οικιακά απορρίμματα, σύμφωνα με όσα περιλαμβάνονται σε κάθε περιοχή. Τα προϊόντα που φέρουν το συγκεκριμένο σύμβολο δεν πρέπει να απορρίπτονται μαζί με τα οικιακά απορρίμματα.

For China

有关产品中所含有害物质的说明

本资料就本公司产品中所含的特定有害物质及其安全性予以说明。
本资料适用于 2007 年 3 月 1 日以后本公司所制造的产品。

环保使用期限



此标志适用于在中国国内销售的电子信息产品，表示环保使用期限的年限。所谓环保使用期限是指在自制造日起的规定的期限内，产品中所含的有害物质不致引起环境污染，不会对人身、财产造成严重的不良影响。环保使用期限仅在遵照产品使用说明书，正确使用产品的条件下才有效。不当的使用，将会导致有害物质泄漏的危险。

产品中有毒有害物质或元素的名称及含量

部件名称	有毒有害物质或元素					
	铅(Pb)	汞(Hg)	镉(Cd)	六价铬(Cr(VI))	多溴联苯(PBB)	多溴二苯醚(PBDE)
外壳(壳体)	×	○	○	○	○	○
电子部件(印刷电路板等)	×	○	×	○	○	○
附件(电源线、交流适配器等)	×	○	○	○	○	○

○：表示该有毒有害物质在该部件所有均质材料中的含量均在 SJ/T11363-2006 标准规定的限量要求以下。
×：表示该有毒有害物质至少在该部件的某一均质材料中的含量超出 SJ/T11363-2006 标准规定的限量要求。
因根据现有的技术水平，还没有什么物质能够代替它。



This product complies with the requirements of EMC Directive 2004/108/EC.

For EU Countries

FEDERAL COMMUNICATIONS COMMISSION RADIO FREQUENCY INTERFERENCE STATEMENT

For the USA

This equipment has been tested and found to comply with the limits for a Class B digital device, pursuant to Part 15 of the FCC Rules. These limits are designed to provide reasonable protection against harmful interference in a residential installation. This equipment generates, uses, and can radiate radio frequency energy and, if not installed and used in accordance with the instructions, may cause harmful interference to radio communications. However, there is no guarantee that interference will not occur in a particular installation. If this equipment does cause harmful interference to radio or television reception, which can be determined by turning the equipment off and on, the user is encouraged to try to correct the interference by one or more of the following measures:

- Reorient or relocate the receiving antenna.
- Increase the separation between the equipment and receiver.
- Connect the equipment into an outlet on a circuit different from that to which the receiver is connected.
- Consult the dealer or an experienced radio/TV technician for help.

This device complies with Part 15 of the FCC Rules. Operation is subject to the following two conditions:

- (1) this device may not cause harmful interference, and
- (2) this device must accept any interference received, including interference that may cause undesired operation.

Unauthorized changes or modification to this system can void the users authority to operate this equipment.
This equipment requires shielded interface cables in order to meet FCC class B Limit.

For Canada

NOTICE

This Class B digital apparatus meets all requirements of the Canadian Interference-Causing Equipment Regulations.

AVIS

Cet appareil numérique de la classe B respecte toutes les exigences du Règlement sur le matériel brouilleur du Canada.

For C.A. US (Proposition 65)

WARNING

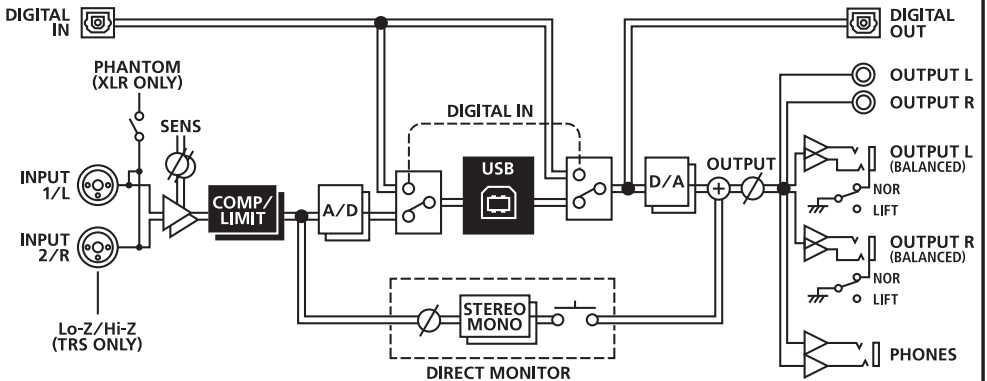
This product contains chemicals known to cause cancer, birth defects and other reproductive harm, including lead.

For the USA

DECLARATION OF CONFORMITY Compliance Information Statement

Model Name : UA-25EXCW
Type of Equipment : USB Audio Interface
Responsible Party : Cakewalk Inc.
Address : 268 Summer Street, Boston, MA 02210
Telephone : (617) 423-9004

AUDIO BLOCK



Free Manuals Download Website

<http://myh66.com>

<http://usermanuals.us>

<http://www.somanuals.com>

<http://www.4manuals.cc>

<http://www.manual-lib.com>

<http://www.404manual.com>

<http://www.luxmanual.com>

<http://aubethermostatmanual.com>

Golf course search by state

<http://golfingnear.com>

Email search by domain

<http://emailbydomain.com>

Auto manuals search

<http://auto.somanuals.com>

TV manuals search

<http://tv.somanuals.com>